

Biology 10

Chapter 22-4
"The Angiosperms"

P650-654

Objectives

- Describe the adaptations the angiosperms developed that allowed them to be the most successful plants today.
- Compare and contrast monocots and dicots.
- Explain what annual, biennial and perennial plants are.
- Identify the parts of a flower

Division Anthophyta

- Also called “ _____ ”
- Most successful plants on the planet.
 - Reasons:
 - 1) Development of the _____:
 - flower's job is to attract pollinators, so plant doesn't have to produce as much pollen as gymnosperms
 - 2) Development of the _____
 - fruit's job is to protect plant embryo
 - also aids in seed dispersal

Angiosperm Classification

- Used to be just two groups
 - _____
 - _____
- Now, the dicots have been broken into several clades, including:
 - Amborella Clade
 - Water Lily Clade
 - Magnoliid Clade
 - Eudicots

Monocots vs Dicots

- Monocots:
 - plant embryo has one _____ (seed leaf)
 - flowers have parts in multiples of _____
 - usually _____ veins

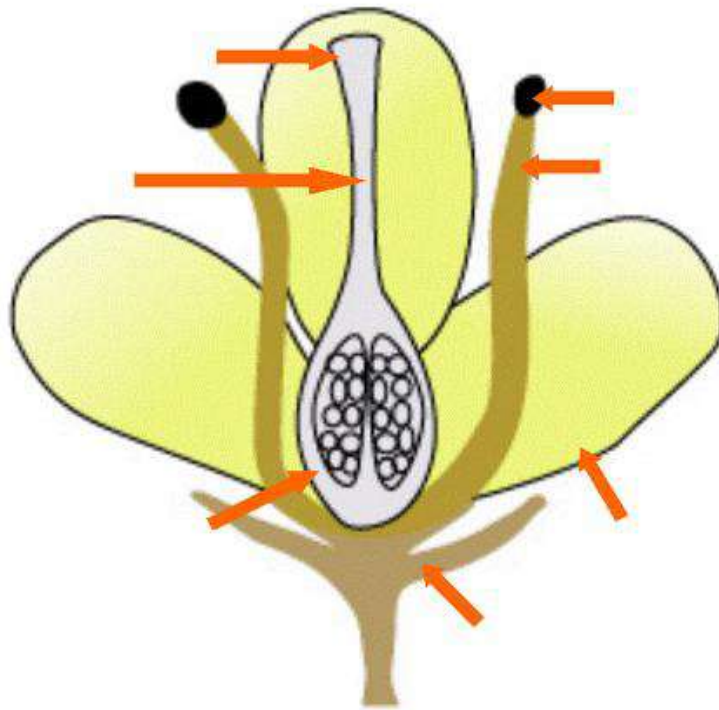
- _____
- ex: _____
- **Dicots:**
 - plant embryo has _____ cotyledons
 - flowers have parts in multiples of _____
 - _____ veins
 - _____
 - larger group of plants, includes _____ (except conifers, palms)

Anthophytan Life Cycles

- **annuals:** plant lives for _____
 - most herbaceous: _____
 - seeds are built to survive winters
- **biennials:** plant lives for _____
 - first year, plant grows _____ for food storage
 - over winter, plant _____, survives on food stored by root
 - second year, plant produces _____
- **perennials:** plant lives for _____
 - produces flowers/seeds periodically
 - many have _____ stems

Anatomy of a Flower

- **petals:** generally, colorful parts of the flower
 - used to attract pollinators
- **sepals:** leaves used to protect the young flower bud
- **stamen:** male flower structure, consists of
 - anther: pollen-producing tip of stamen
 - filament: stalk that attaches anther to flower
- **pistil:** female flower structure, consists of:
 - stigma: sticky tip to which _____
 - style: stalk of pistil that _____
 - ovary: contains the ovules, _____
 - ovule: contains egg cell, develops into the seed



Label the Flower Above