



BROOKLINE HIGH SCHOOL

115 GREENOUGH ST. BROOKLINE, MA 02445 617.713.5016 BHS.BROOKLINE.K12.MA.US

P R O F I L E

CEEB code

220445

bhs.brookline.k12.ma.us

Headmaster

Anthony Meyer

Counselors

Darby Neff-Verre

Guidance Coordinator

Lenny Libenzon

College Counselor

Sara Aggeler

Nicole Bent

Kate Cordner

Richard Gorman

Ellen Herz

Clifton Jones

Kara Lopez

Eric Schiff

Kathleen Whelan

Alexandra Young

Linda Wentzell

Registrar

Brenda Aguilar

Guidance Secretary

Stephanie Hunt

African-American Latino Scholars

J. Malcolm Cawthorne

METCO

Amy Bayer

ACE

Daniel Bresman

SWS

Wendy Ryder

April Zyriek

Special Education

Owen Minott

Winthrop House

Superintendent

Ben Lummis (Interim)

Accreditation: New England
Association of Schools and
Colleges (N.E.A.S.C.)

Brookline High School is a member
of the National Assoc. for College
Admission Counseling and complies
with the NACAC Statement of
Principles of Good Practice.

Brookline High School was founded in 1843. Today, BHS educates an extraordinarily diverse population of students representing 76 nations and most ethnic groups. 26% of BHS students speak a first language other than English, and 41 languages are spoken by our students.

Recognized as one of the finest schools in the nation by publications such as Boston Magazine, US News and World Report, and Newsweek, Brookline High School is known best for its extensive curriculum, outstanding faculty, and innovative programs and services, leading to students' academic success.

Brookline is a dynamic and progressive community of approximately 60,000 people, deeply committed to the success of its public schools. The school is 6.8% African American, 16.4% Asian, 11.9% Hispanic, 56.1% White, and 8.7% Multi-Ethnic. The median household income in the town is just above \$110,000. In contrast, 15.5% of the students qualify for free or reduced-price lunch. Eight elementary schools and one comprehensive high school educate approximately 7,855 students.

Marking System

The mission of Brookline High School is to develop capable, confident, life-long learners who contribute to their community, participate thoughtfully in democracy, and succeed in a diverse and evolving global society. In order to graduate from The High School, students must earn a total of 22 credits.

A=4.0; A-=3.7; B+=3.3;

B=3.0; B-=2.7; C+=2.3;

C=2.0; C-=1.7; D+=1.3;

D=1.0; D-=0.7; E=0;

Options: P = Pass; F = Fail;

W = Withdrew;

L = Late Entry -- too late for
assessment in current marking
period;

N= Failure due to attendance
inadequate to meet the
requirements of the course.

Grade Point Average is calculated at the end of the junior year and measures final grades from the 10th and 11th grades. All courses granting at least one-half credit per semester are included, except those taken on a pass fail basis and those earning a grade of "N". Advanced Placement and Honors courses are not weighted. Many Senior Year classes are unlevelled. Independent study is available to students on a contractual basis. Levels are clearly indicated on the student's transcript. Marks earned for grades 10 & 11 are averaged on a 4 point scale.

Information on attendance and discipline is not available to colleges per school policy.

We counsel students to answer honestly any questions regarding their disciplinary history on a college application.

School

| | |
|------------------------------|---------------|
| Total enrollment | 2085 |
| Grades included | 9, 10, 11, 12 |
| Size of current senior class | 474 |

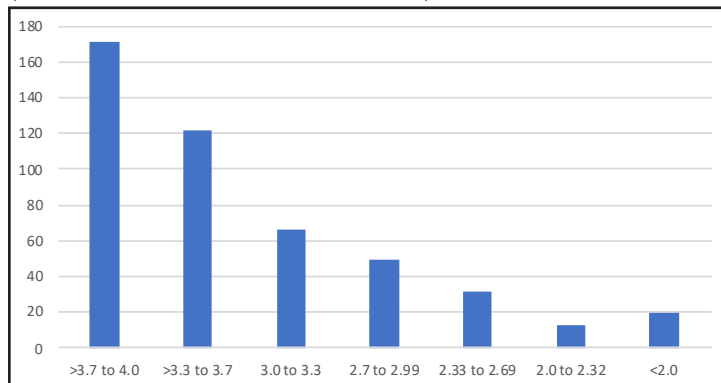
College Admissions Test Scores

SAT Scores, Class of 2018

| | EBRW | Math | Total |
|---------------|------|------|-------|
| BHS Mean | 638 | 648 | 1286 |
| MA Mean | 559 | 561 | 1120 |
| National Mean | 531 | 528 | 1059 |

Class of 2020 Grade Distribution

(Note: We do not calculate rank in class.)



National Merit Scholars

| | |
|---|----|
| Class of 2019 National Merit Scholar Semi-finalists | 7 |
| Class of 2019 National Merit Scholar Commendations | 54 |
| Class of 2019 National Hispanic Recognition | 8 |
| Class of 2019 National Merit Scholar Finalists | 7 |

Advanced Placement at BHS

BHS offers 18 AP courses: American Government, Biology, Calculus AB, Calculus BC, Chemistry, Chinese, Environmental Science, French, Human Geography, Japanese, Latin, Music Theory, Physics 1&2, Physics C, Spanish, Statistics, Studio Art, and U.S. History.

In May 2017, 534 BHS students took 1,124 AP examinations, with 92.7% earning a score of 3 or higher, and 78.5% earning 4 or higher. The accompanying chart shows the distribution of scores on AP exams.

| School Totals | 5 | 4 | 3 | 2 | 1 |
|---------------|-----|-----|-----|----|----|
| Total Exams | 547 | 328 | 158 | 8 | 13 |
| % of Total | 49% | 29% | 14% | 6% | 1% |

| Subject Totals | 5 | 4 | 3 | 2 | 1 | # |
|----------------------|----|----|----|----|---|-----|
| Biology | 46 | 25 | 7 | | | 78 |
| Calculus AB | 64 | 45 | 25 | 19 | 6 | 137 |
| Calculus BC | 64 | 9 | 1 | | | 74 |
| Chemistry | 47 | 21 | 16 | | 2 | 86 |
| Chinese | 8 | 3 | 5 | 1 | | 17 |
| Comp. Sci. | 6 | 10 | 3 | | | 19 |
| English Lang. | 23 | 13 | 10 | 2 | 1 | 49 |
| English Lit. | 2 | 3 | 7 | 1 | | 13 |
| Environmental Sci. | 19 | 16 | 3 | 1 | | 39 |
| French | 22 | 16 | 1 | | | 39 |
| Human Geography | 20 | 28 | 14 | 9 | 1 | 72 |
| Japanese | 7 | 1 | 6 | | | 14 |
| Latin | 1 | 2 | 1 | | 1 | 5 |
| Music Theory | 11 | 7 | | | | 18 |
| Physics 1 | 2 | 16 | 11 | 11 | | 40 |
| Physics 2 | 2 | 4 | 13 | 11 | | 30 |
| Physics C: Elec/ Mag | 27 | 11 | 2 | 7 | | 47 |
| Physics C: Mechanics | 33 | 14 | 1 | | 1 | 49 |
| Spanish | 36 | 22 | 7 | | | 65 |
| Statistics | 34 | 9 | 1 | 1 | | 45 |
| Studio Art | 4 | 6 | 1 | | | 11 |
| US Gov and Politics | 24 | 7 | 4 | 1 | | 36 |
| US History | 54 | 32 | 16 | 3 | | 105 |

AP Scholars Total Scholars: 221; Average Score: 4.39

| | AP Scholar | AP Scholar with Honor | AP Scholar with Distinction | National AP Scholar |
|---------------|------------|-----------------------|-----------------------------|---------------------|
| Number | 73 | 59 | 89 | 8 |
| Average Score | 4.07 | 4.27 | 4.51 | 4.87 |



Class of 2019 - 478 graduates

| | |
|------------------------------|-----|
| Attending 4-Year Colleges | 88% |
| Attending 2-Year Colleges: | 4% |
| Attending non-U.S. Colleges: | 3% |
| Total Continuing Education | 95% |
| Employment | 2% |
| Other, Including Military | 1% |
| Gap Year | 2% |

Colleges Attending (Class of 2019)

American*, Amherst, Art Institute of Chi, Babson, Bard, Barnard, Bates, Baylor, Ben Franklin IT, Berklee C. of Music, Boston C.*, Boston U.*, Brandeis*, Bridgewater State*, Bridgton Academy, Brown, Bryant, Bryn Mawr, Bucknell, Bunker Hill CC*, C. of Charleston, Cal Lutheran, Carleton, Carnegie Mellon, Case Western Reserve*, Claremont McKenna, Clark Atlanta, Clark*, Colby, Colgate, Colorado, Colorado State, Columbia*, Connecticut C., Cornell, Curry, Dartmouth, Dean, Denison, Dublin City, Duke, Earlham, Embry-Riddle, Emerson, Emory, Florida I. T., Fordham, Framingham State, Furman, George Washington*, Georgetown, Gettysburg, Hamilton, Harvard*, Hofstra, Holy Cross, Hotelschool The Hague, Howard, Indiana, Ithaca, Johns Hopkins, Johnson & Wales, Keene State, Lafayette, Landmark, Lasell, Lesley, Loyola Marymount, Loyola Chicago, Lynn, M.I.T., Macalester, Maine C. of Art, Mass. C. of Art and Design*, Mass. C. of Pharmacy*, Mass Bay CC*, McGill, Miami (Ohio), Middlebury, Mitchell, Montana State, Montserrat C. of Art, Mount Holyoke, National C. of Ireland, N. Y. U. Norfolk State, Northeastern*, Northwestern, Oberlin, Occidental, Ohio Wesleyan, Old Dominion, Oxford, Pace, Penn State, Pitzer, Pomona, Prairie View A&M, Pratt Inst., Providence, Queen's, Quinnipiac, R. I. S. D., R.I.T., R.P.I., Reed, Rhode Island, Rice, Roger Williams, Saint Joseph's, Saint Michael's, Santa Clara, Sarah Lawrence, SCAD, Simmons, Skidmore, Smith, St. John's, St. Lawrence, Stanford, Stony Brook, Suffolk, Swarthmore, Sweet Briar, Syracuse, The New School*, Towson, Trinity, Trinity (Dublin), Tufts*, Tulane*, U. B., Utrecht, Cal Berkeley, Cal San Diego, Cal Santa Barbara, Cal Santa Cruz, UC Cincinnati, UConn*, Delaware, Illinois, Kentucky, Maryland, UMass Dartmouth*, UMass Amherst*, UMass, Boston*, UMass, Lowell*, Michigan*, Minnesota, U. N. H., UPenn., Pitt., U. R. I., Richmond, Rochester, USC, S. Carolina, Toronto, Virginia, Vermont*, Washington, UCLA, Union, US Naval Academy, Vassar*, Virginia Union, W. I. T., Wake Forest, Wash. U St. Louis, Wellesley, Wesleyan, Westfield State, Wheaton, Whitman, Williams, Yale

*INDICATES TOP 25 SCHOOLS ATTENDING