

# Beyond the Borders

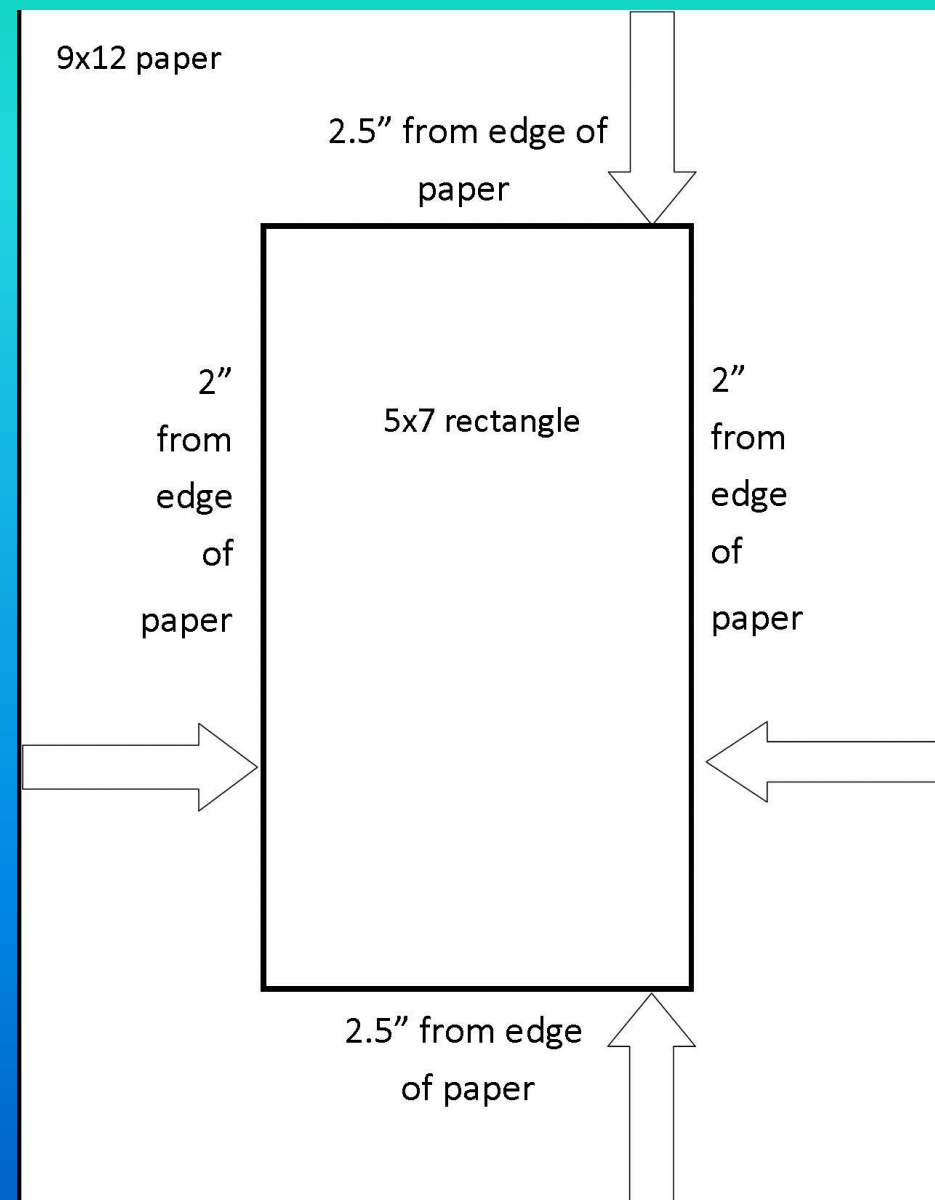
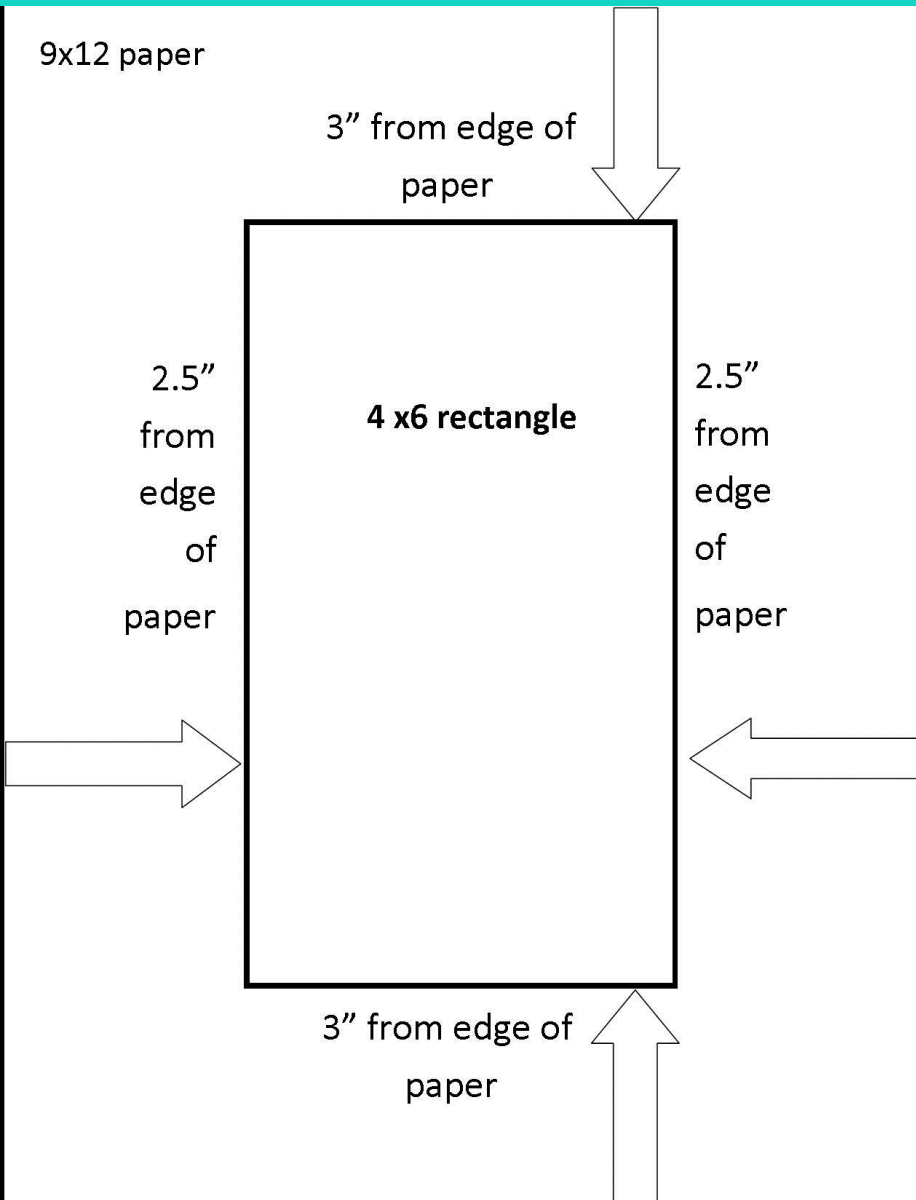
Color Contrast and Black and  
White

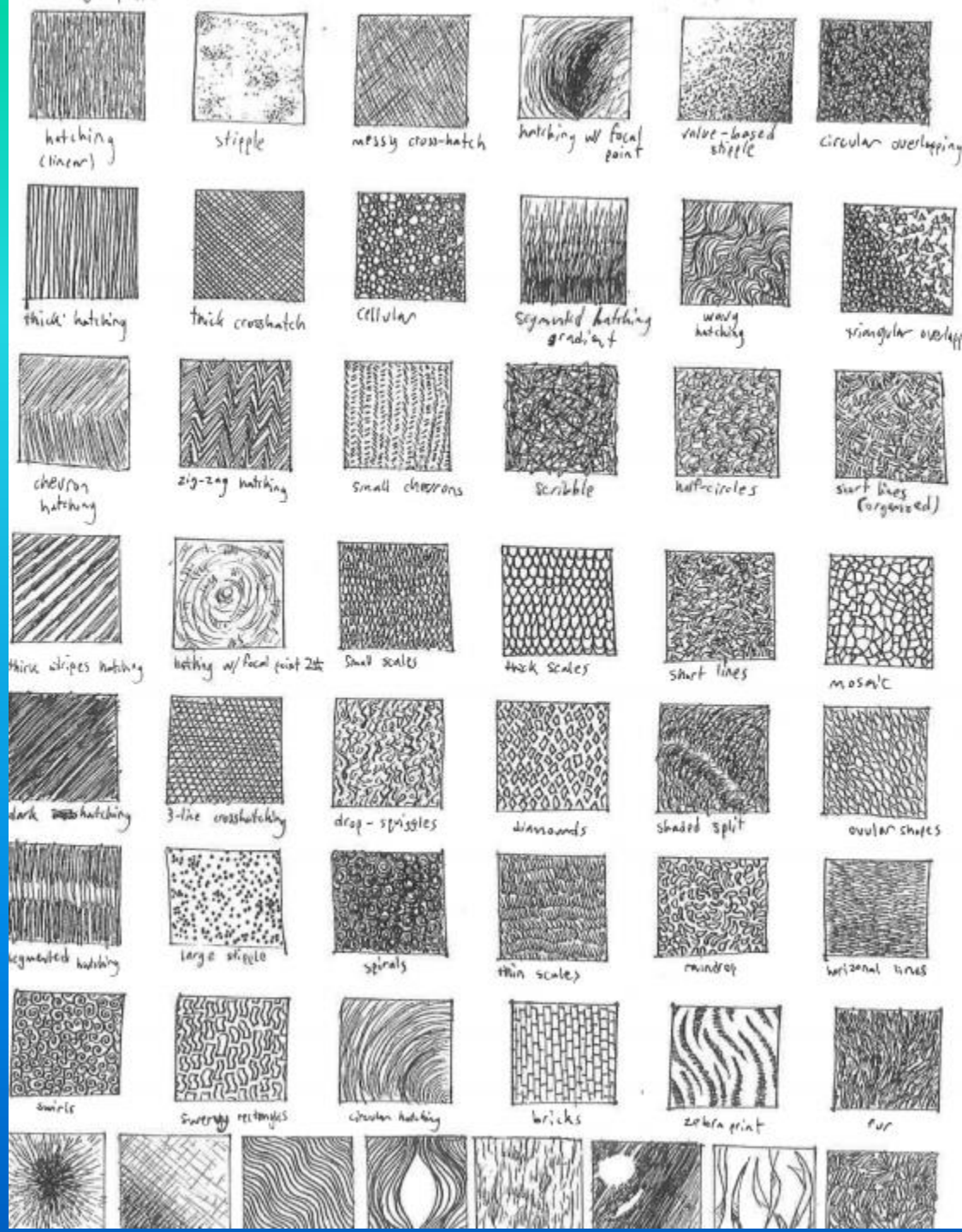
**To create an interesting composition, you need to think about the placement of your object. You will utilize the compositional “rule of thirds.” Compositions are more interesting if you place objects off balanced (asymmetrical balance) than if you place them right in the middle. Use color variances and layer colors to create vibrancy and hue change.**



1. You will need to choose some kind of insect, animal, bird or mammal to draw.
  2. Draw about a 4" x 6" or 5" x 7" rectangle (or it could be a triangle, or some other shape with approval).
  3. Then draw an animal, insect or mammal or bird that is at an interesting angle over the rectangle-your animal will extend beyond the borders of the rectangle or shape. You will still want part of your rectangle to show.
  4. Everything inside the rectangle will be color
  5. Everything outside will be black sharpie and white.
  6. The insect, animal, bird or mammal will need to be in color-even on the part that extends outside the rectangle. You CAN extend the color of a few objects from the rectangle into the black and white border, but the majority of that outside border should be black and white.
  7. For the black and white border, you should use specific drawing techniques like hatching, cross hatching, stippling, scumbling, etc
- Create a multifaceted picture plane that explores composition, depth changes, and contrast. Show darker value by creating lines that are thick and/or close together and lighter values by making lines thinner and/or farther apart.

These are the dimensions of your boxes and how you should measure from the edge of your paper for each size:





There are a variety of pen and ink techniques you can use in your composition for the outside border.

















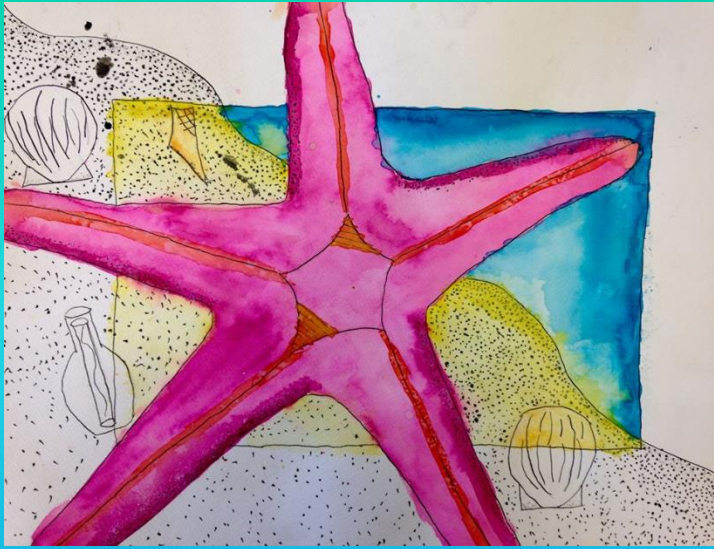




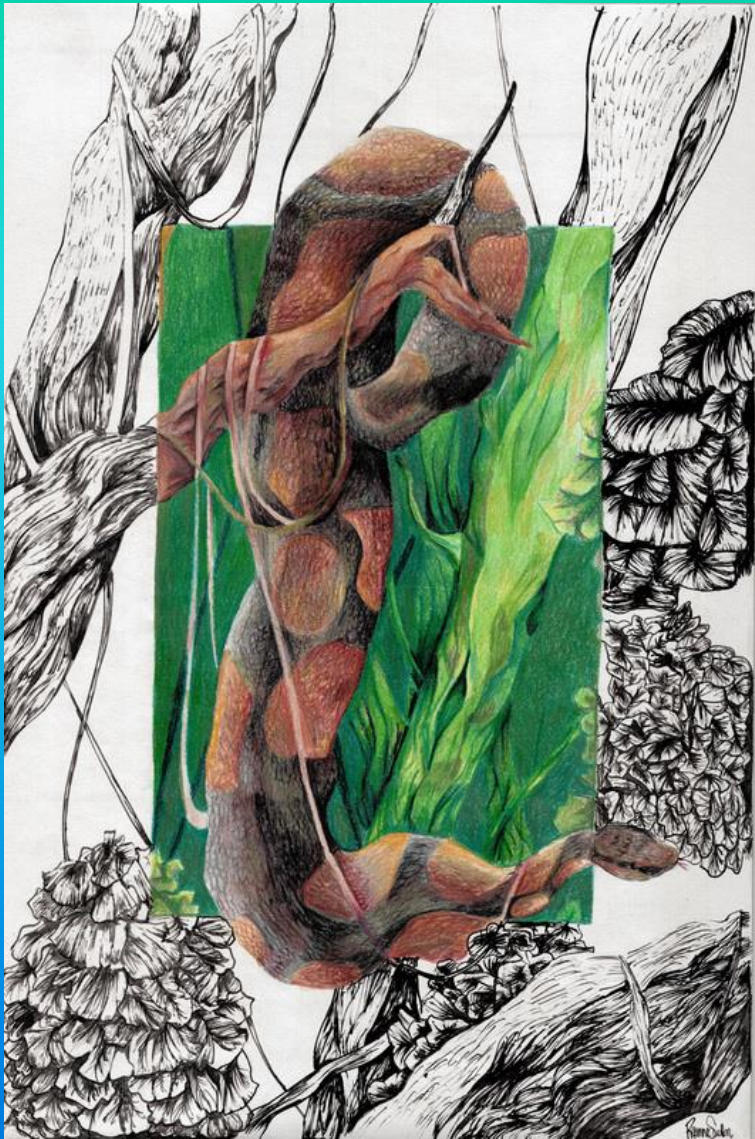












## Grading Requirements:

- Drawing of an insect, animal, bird or mammal.
- Use rule of thirds to center your subject
- Has a rectangle (or triangle or another shape with approval) in the middle (about 5"x6")
- Use of watercolor pencils for inside rectangle
- Use brush and water to blend the colors
- Has black (sharpie) and white design outside edges of shape and uses drawing techniques like hatching, cross-hatching, stippling or scumbling , etc.
- Color can extend slightly past the shape-but black and white should stay outside shape boundaries.