

Barbie

BARBIE RETAIL REVITALIZATION CASE STUDY

(Your Names)

Barbie

A BRIEF HISTORY OF BARBIE

1950S: THE BIRTH OF BARBIE

- 1959: Barbie is introduced by the American toy company Mattel, created by Ruth Handler.
- Barbie's full name is Barbara Millicent Roberts.
- She is marketed as a teenage fashion doll, breaking away from the traditional baby dolls of the time.



1960S: EXPANDING THE BARBIE WORLD

- 1961: Ken, Barbie's boyfriend, is introduced.
- 1963: Barbie's best friend Midge is introduced.
- 1965: Barbie's little sister Skipper is introduced, targeting a younger audience.
- Various career-themed Barbie dolls are released, reflecting changing societal views on women's roles.



1970S: DIVERse EXPANSIONS

- Barbie's look starts to evolve to include more diverse hairstyles and clothing options.
- 1971: Malibu Barbie becomes popular with her tanned skin and beach attire.
- 1977: Barbie's African American friend Christie is introduced.
- 1979: Barbie's first astronaut doll is released, reflecting the growing interest in space exploration.



1980S: POP CULTure and FANTASY

- Barbie reflects pop culture trends, with dolls representing music stars and movie characters.
- 1983: The iconic Barbie Dream House is introduced.
- 1985: Barbie and the Rockers dolls are released.
- Fantasy-themed dolls like Princess Barbie and Unicorn Barbie gain popularity.



1990S: More DIVERSITY and modernization

- Barbie continues to diversify with the introduction of more ethnically diverse dolls.
- Barbie dolls embrace more modern fashion and career choices.



2000S: TECHNOLOGICAL ADVANCES AND EXPANSIONS

- Barbie dolls incorporate technology with features like voice recording and interactive playsets.
- 2004: Barbie celebrates her 45th anniversary.
- Barbie continues to portray a wide range of careers and hobbies.



2010S: EMBRACING CHANGE

- Barbie evolves to include more realistic body types, skin tones, and hairstyles through the "Fashionista" line.
- 2016: Barbie introduces three new body types - curvy, tall, and petite.
- Collaboration with pop culture includes Barbie dolls modeled after famous people like Frida Kahlo and Amelia Earhart.



2020S: CONTINUED EVOLUTION

- Barbie continues to emphasize inclusivity, diversity, and representation in its dolls and playsets.
- More career-focused dolls and playsets are released to inspire imaginative play and learning.



BARBIE'S RECENT SUCCESSES

- The live-action Barbie movie was a major marketing coup for the brand. The film was highly anticipated and received positive reviews, which helped to boost sales of Barbie dolls and merchandise.
- Barbie has also been successful in partnering with other brands, such as MAC Cosmetics and Impala Skate. These partnerships have helped to introduce Barbie to a new audience and make the brand more relevant to today's consumers.
- Barbie has also been praised for its efforts to be more inclusive. The brand has released dolls with a variety of body types, skin tones, and hair colors, which has helped to make Barbie more relatable to girls of all backgrounds.

Barbie

THE BARBIE MOVIE

BARBIE MOVIE

The Barbie movie has had a major impact on the Barbie brand. The film was a critical and commercial success, grossing over \$1 billion worldwide. It also received positive reviews from critics, who praised the film's humor, heart, and message of female empowerment.



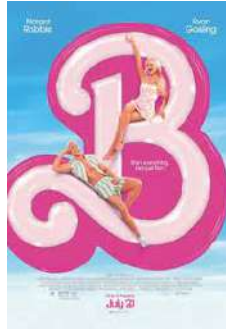
BARBIE MOVIE

The success of the Barbie movie has helped to revitalize the Barbie brand. The film has introduced Barbie to a new audience of adults and older children, and it has made the brand more relevant to today's consumers. The film has also helped to dispel some of the negative stereotypes that have been associated with Barbie in the past.



BARBIE MOVIE

In addition to the box office success, the Barbie movie has also been a major marketing success. The film's merchandise has been flying off the shelves, and Mattel has partnered with over 165 brands to create Barbie-themed products. The film has also been a major social media phenomenon, with over 10 billion impressions on TikTok.



BARBIE MOVIE

The Barbie movie is a major milestone for the Barbie brand. It is the first live-action film about Barbie, and it is the most successful film ever made about a doll. The film has helped to make Barbie more relevant and popular than ever before, and it is sure to have a lasting impact on the brand.



case STUDY QUESTIONS

Barbie

HOW HAS BARBIE'S MARKETING STRATEGY
EVOLVED OVER TIME?



Barbie

HOW HAS THE BARBIE MOVIE IMPACTED
THE BARBIE BRAND?



WHAT ARE THE KEY FACTORS THAT HAVE CONTRIBUTED TO THE BARBIE BRAND REVITALIZATION?

Barbie

HOW HAS THE BARBIE BRAND CHANGED OVER TIME TO BECOME MORE RELEVANT TO TODAY'S CONSUMERS?

WHAT ARE THE CHALLENGES AND OPPORTUNITIES FACING THE BARBIE BRAND IN THE FUTURE?



Barbie

HOW CAN MATTEL CONTINUE TO REVITALIZE THE BARBIE BRAND AND MAKE IT EVEN MORE RELEVANT TO ALL AGES?



Barbie

WHAT ARE THE ETHICAL CONSIDERATIONS INVOLVED IN MARKETING AND SELLING BARBIE DOLLS?



Barbie

HOW HAS BARBIE BEEN USED TO
PROMOTE DIFFERENT CULTURAL VALUES?



Barbie

HOW HAS BARBIE BEEN USED TO
CHALLENGE GENDER STEREOTYPES?



Barbie

HOW DOES BARBIE'S REPRESENTATION OF BEAUTY AND FASHION IMPACT KIDS' SELF-ESTEEM (BOTH POSITIVELY AND NEGATIVELY)?

