

## ST MATH PUZZLES

Julien—231

Kaiden—166

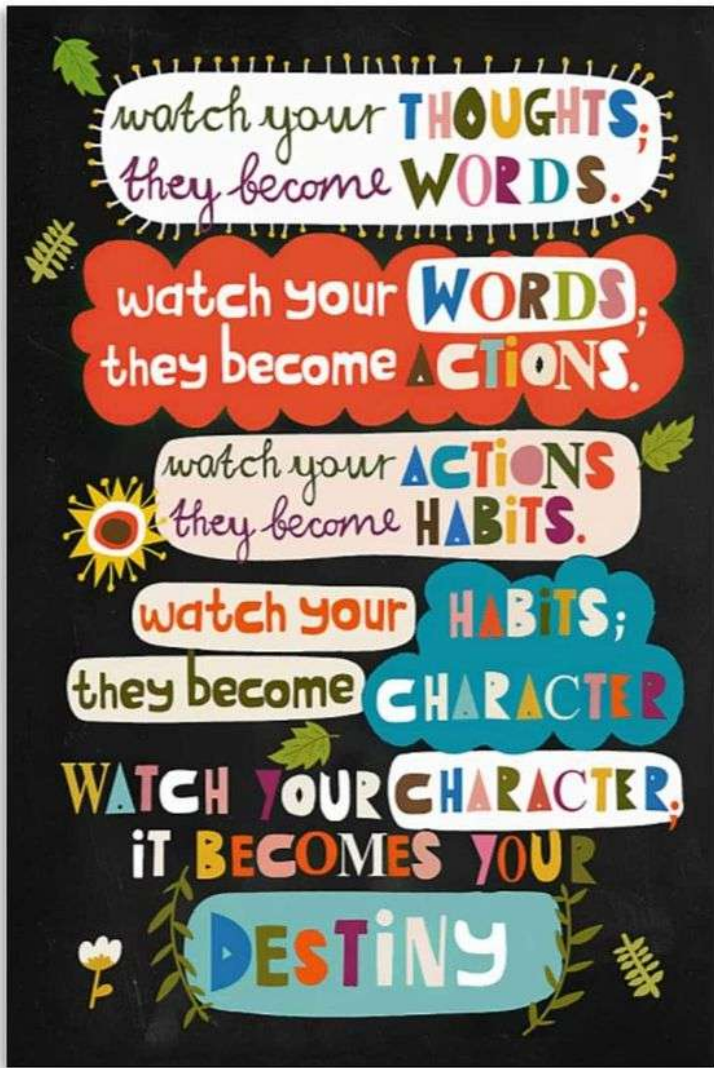
Zayden—157

## Boost

Kaiden—57

Luis—56

Eden—54



## Lesson 4: What Does the Furniture Say?

 Printable Lesson Guide



Students will closely read the end of the story to identify which details Holmes uses to solve the crime, then revise their "maps" to accurately match Holmes's description of the clues to the crime setting.



Boost- Strawberries, Raspberries,  
Pineapples

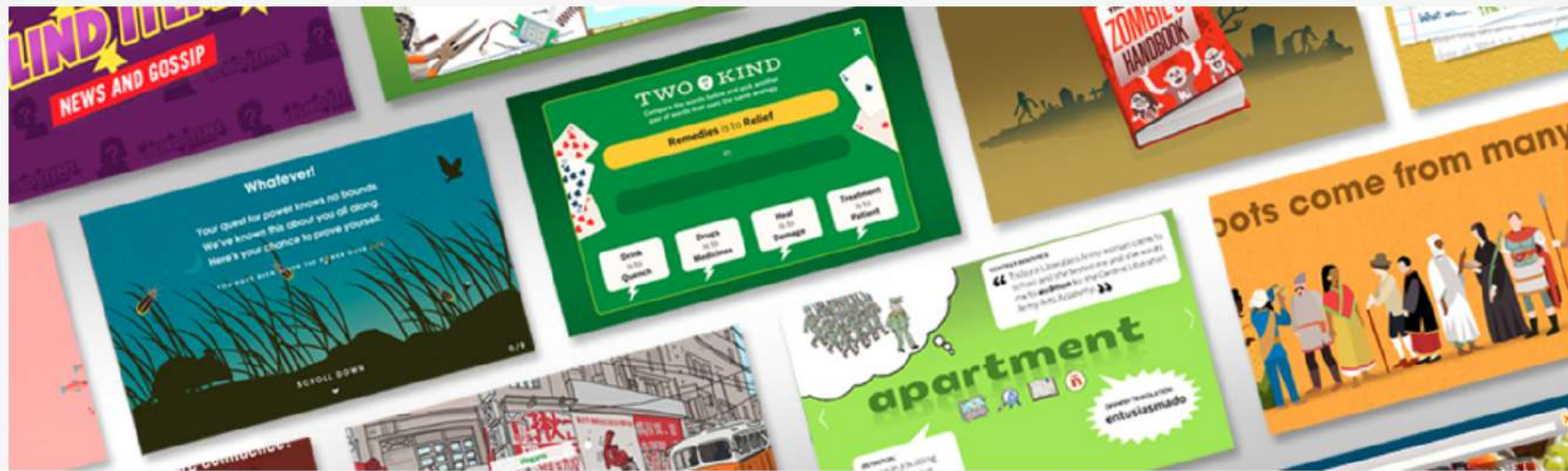


Boost Close Reading- Kiwis



# 05:00

Open the **Vocab App**.



# SUFFIX ►► Warmups

#4

© Jennifer Findley

Directions: Read the suffix and its meaning. Read the words containing the suffix and their definitions. Then choose one to use in a sentence.

-ly

a way of doing something

**cheerily**

doing something in a cheerful manner

**kindly**

doing something in a kind manner

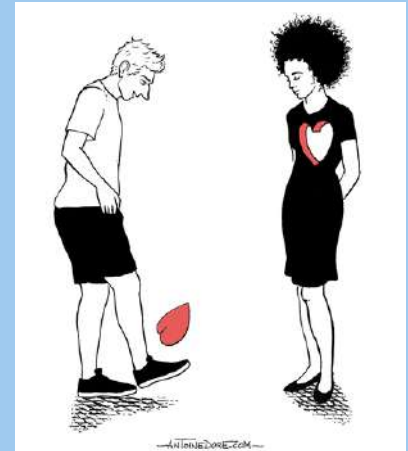
**rapidly**

doing something in a rapid or quick manner

► **My Sentence:**

Ruthless- adjective- “The idea of using a form of poison which could not possibly be discovered by any chemical test was just such a one as would occur to a clever and ruthless man who had had an Eastern training.

The murder was committed by a ruthless person, who clearly didn't care about how painful it would be for her family to lose her.



1. What are the three parts of the bedroom that seem suspicious?

- A. Air vent
- B. Rope with no bell
- C. The bed clamped to the floor



2. What was the signal for Holmes and Sherlock to come to the house?

The signal for Holmes and Sherlock to come to the house was a light in the window.



“The signal for Holmes and Sherlock to come to the house was \_\_\_\_\_.”

About nine o'clock the light among the trees was extinguished, and all was dark in the direction of the Manor House. Two hours passed slowly away, and then, suddenly, just at the stroke of eleven, a single bright light shone out right in front of us.

“That is our signal,” said Holmes, springing to his feet; “it comes from the middle window.”

3. What sound did Holmes hear that petrified not only him, but even people in the village?

The sound that petrified Holmes and people in the village was a loud scream.

"The sound that petrified Holmes and people in the village was \_\_\_\_\_."



But I saw nothing. At the moment when Holmes struck the light I heard a low, clear whistle, but the sudden glare flashing into my weary eyes made it impossible for me to tell what it was at which my friend lashed so savagely. I could, however, see that his face was deadly pale and filled with horror and loathing. He had ceased to strike and was gazing up at the ventilator when suddenly there broke from the silence of the night the most horrible cry to which I have ever listened. It swelled up louder and louder, a hoarse yell of pain and fear and anger all mingled in the one dreadful shriek. They say that away down in the village, and even in the distant parsonage, that cry raised the sleepers from their beds. It struck cold to our hearts, and I stood gazing at Holmes, and he at me, until the last echoes of it had died away into the silence from which it rose.

4. What exactly is “The Speckled Band?”

The Speckled Band is a snake.



Round his brow he had a peculiar yellow band, with brownish speckles, which seemed to be bound tightly round his head. As we entered he made neither sound nor motion.

“The band! the speckled band!”  
whispered Holmes.

I took a step forward. In an instant his strange headgear began to move, and there reared itself from among his hair the squat diamond-shaped head and puffed neck of a loathsome serpent.

5. What was the motive of the stepfather to want to kill Helen?

His motive to kill Helen was to make sure that he kept the money.



6. Why do you think Holmes has more to say about some of the things they see?

- a. Holmes takes better notes than Watson
- b. Holmes is better at observing, He focuses more on what he sees and what his observations mean.
- c. Holmes knows more about architecture than Watson
- d. Holmes has solved a case like this before.



1. Drag the following events into the correct order.

≡ A. They find Dr. Roylott dead in his room.

≡ B. They hear a horrible cry.

≡ C. Holmes lights a match. Watson hears a whistle.

≡ D. Holmes hits something on the bell-pull with his cane.

≡ E. They hear a hissing sound.

≡ F. They see, wrapped around Dr. Roylott's head, a snake that looks like a speckled band.

## WHAT IS CHRONOLOGICAL ORDER ?



### BEGINNING

Jamie bought pie ingredients.



### MIDDLE

Jamie baked the pie.



### END

Jamie ate the pie.

ThoughtCo.

2

CLASS

Use the Text as Referee:  
Discuss the Ending



2

# Directions

1. If you did not finish placing your furniture and objects in the [Scene of the Crime: Sherlock Holmes app](#) during the last lesson, complete that task first.
2. Drag and drop the quotes from the text to label the objects that are important clues Holmes uses in solving the case. Not all of the quotes will be used, so you have to read and think carefully to make sure you are only labeling objects that are clues.

'He had trained it, probably by the use  
of the milk which we saw...'

'...a small wooden shelf full of books  
mostly of a technical character...'

'...a gaping fireplace, after the fashion  
of old country-houses...'

'...the bed was clamped to the floor...'

## SPLIT SCREEN SHORTCUT FOR CHROMEBOOKS



Press alt and the front and back  
bracket keys at the same time!



15:00

## Finished early?

- Get some minutes in Boost/Close Reading
- OR
- Recreate Helen's sister's room or a scene in Canva in a presentation- try to match it as closely as possible!



## Roylott's Room

Mistake	Explanation	Textual Evidence
The armchair should be beside the bed.	This is an obvious mistake since the only chair with arms (the red one pictured) is supposed to be next to the bed.	"an armchair beside the bed" (158)
The wooden chair should be against the wall.	Holmes makes a point of looking closely at the wooden chair that's against the wall.  And we find out later that it must be next to the bed because Holmes makes the deduction that Roylott has been standing on it in order to put the snake through the ventilator.	"a plain wooden chair against the wall... He squatted down in front of the wooden chair and examined the seat of it with the greatest attention" (158-163)
The saucer of milk should be on top of the safe.	It's clear that the saucer of milk is not on the table, but that it should be on the safe.	"and a large iron safe...He took up a small saucer of milk which stood on the top of it..." (158-165)
The dog lash should be hanging from the bed.	In the image the dog lash is on the chair, but we know that when Holmes inspects the room he sees it hanging from the bed.	"The object which had caught his eye was a small dog lash hung on one corner of the bed" (165)





## Helen's Sister's Room

Mistake	Explanation	Textual Evidence
Chest of drawers should be opposite the bed, not next to the window.	Since the chest of drawers is described as being opposite the bed, then it can't be next to the window—it must be across from the bed.	"A brown chest of drawers stood in one corner, a narrow white-counterpaned bed in another" (141)
The carpet should be in the center of the room.	We also know that the carpet cannot be under the bed because, as Holmes points out later, the bed is clamped to the floor.	"a square of Wilton carpet in the centre" (141)  "Did you observe anything very peculiar about that bed?" "No." It was clamped to the floor. Did you ever see a bed fastened like that before?" (212-214)
The dressing table should be to the left of the window.	Since the window is on the back wall, the dressing table needs to be against the back wall, too, because it's next to the window.	"a dressing-table on the left-hand side of the window" (141)
The bell-rope should be hanging from the ventilator above the bed.	The bell-rope can't be on that side of the room because it's supposed to be hanging from the ventilator, and it needs to be touching the pillow.  This makes sense now that we understand the reason why the ventilator and bell-rope were put in the room.	"a thick bell-rope which hung down beside the bed, the tassel actually lying upon the pillow" (142)  "You can see now that it is fastened to a hook just above where the little opening for the ventilator is" (151)

# 7

## INDIVIDUAL Exit Ticket



1. At what point does Holmes figure out how the murder was committed?

- ☐ A When he first meets Helen
- ☐ B When he first meets Dr. Roylott
- ☐ C Before entering Dr. Roylott's room
- ☐ D After entering Dr. Roylott's room

2. Copy and paste a piece of evidence from the text that supports your answer above.