

Attendance Area Task Force

August 24, 2017

Agenda 8-24-17

- Review of 8-15-17 Task Force meeting #1
 - Purpose of representative community group
 - Goals, criteria/parameters, expectations, scope of work (handout)
 - Process
 - Impact (students, families, staff)
- Follow-up items from 1st meeting
 - Reflections/comments/ideas/questions since last week
 - Guide K12 – a quick look
 - Past Attendance Area Maps
 - 4 Moves in 4 Years
 - Homework... JH boundary discussion
- Intra-District Transfers
- Communication Plan - best way to make sure community is informed and heard
 - Website
 - Q & A options (collection, organization, question presentation)
 - Listening Sessions structure & role of Task Force
- School start times
- Is our work complete?

0-5+ year discussion

- Convert 6th grade center back to an elementary
- Convert High School to 9th-12th grades
- Convert Jr. High Schools (7th – 9th) to Middle Schools (6th - 8th)
- More recently, plan to move to a Career Academy model across the district
- Current Elementary schools, over capacity, as anticipated.

Current Enrollment as of 5-17-17

	Total	Capacity	% Capacity	New Devel	Projected	% Capacity
Eagle Creek	846	792	107%	85	931	118%
Jackson	871	792	110%	15	886	112%
Red Oak	655	792	83%	95	750	95%
Sun Path	683	792	86%		683	86%
Sweeney	636	696	91%	70	706	101%
Pearson	682	600	114%		682	114%
East	850	1085	78%	40	890	82%
West	1061	992	107%	75	1136	115%

Today's Reality

- The 2018-19 Transition plan requires attendance areas be re-drawn.
- The Community needs ongoing communication/information around the process & topic (9-12 transition, 6-8 transition, Pearson, and the addition of the 6th elementary school)
- This is a positive situation... our elementary schools will have space to grow, allowing for comfortable movement without overcrowding.
- Pearson transitions back to its original design as an elementary school.
- These changes while planned for, and positive, are challenging as well. Attachments to current schools are real, and the change will be difficult for some.
- Attendance areas will be developed based on school board parameters.
 - Capacity/balance
 - Student demographics
 - Walking distance per district policy
 - Goal of areas lasting 3-5 years
 - Efficient transportation
 - Growth via new developments
- Middle School areas will incorporate "feeder" elementary schools if possible.

Process

- ☐ School Board establishes attendance area parameters
- ☐ Proposed scenarios developed
- ☐ School Board selects "best" scenario by DATE **7/24/2017**
- 4 phases of process
 1. Parent Task Force Study & Review
 2. Preliminary – Public input
 3. Intermediate –Public input
 4. Final –School Board
- ☐ Parent Task Force Study & Review DATE(S) **August 15 & 24, 2017.**
 - Feedback reviewed... scenario updated if necessary.
- ☐ Preliminary - Public Listening Session(s) DATE(S) **September 14, 2017.**
 - Feedback reviewed ... scenario updated if necessary.
- ☐ Intermediate – Public Listening Session(s) DATE(S) **October 23, 2017**
 - Feedback reviewed ... scenario updated if necessary.
- ☐ Final Approval by School Board DATE **11/13/17.**

Process to date

- Winter 2017 Board Meeting(s): Initial discussions on attendance area criteria & process
- April 24 School Board Meeting: Criteria and timeline discussion
- May 22 School Board Meeting: Initial scenarios presented, discussions on timeline, intra-district transfers, start times, process
- June 26 School Board Meeting: Updated scenarios presented, discussion on walking patterns
- July 10 School Board Meeting: Updates scenarios, request for new scenario with goal of developing 3 for initial discussions with task force
- July 24 School Board Meeting: 3 scenarios presented and decision to use them as starting point for task force work.
- Attendance Area Information site made live on district website
- Public communication via board reports throughout, and request for input on 3 scenarios
- August 15 & 24 Task Force meetings
- September 14 & October 23 Public Listening Sessions
- November 13 School Board makes final decision

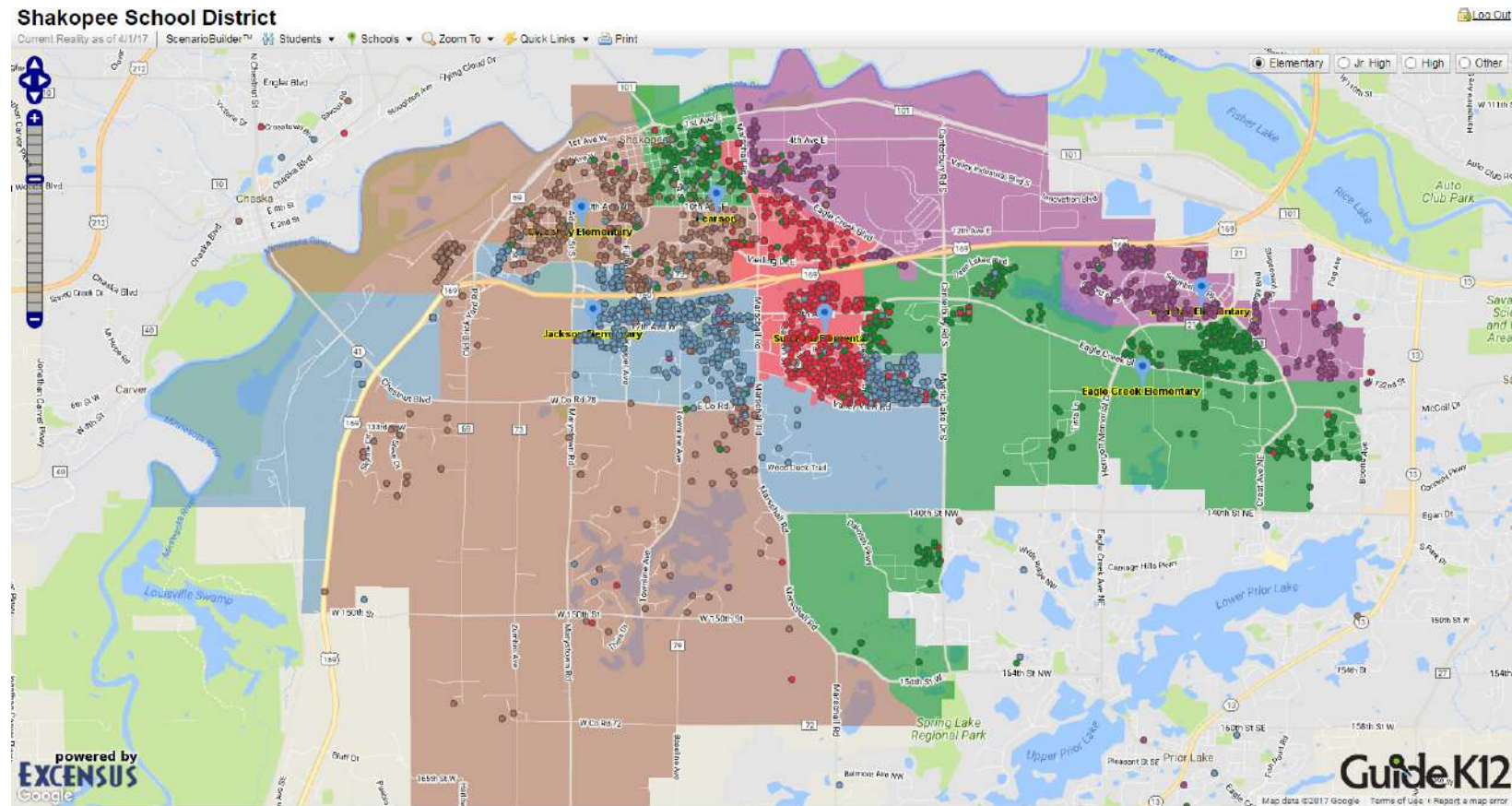
Criteria/parameters per School Board and prior practice

- Geographic: Walking distance to school per district guidelines/policy
 - Elementary - 0.5 miles, Junior High – 1.0 mile, High School – 2.0 miles
 - Safety considerations per policy.. major roads, high speed roads, sidewalks...
- Demographic Balance
- Transportation: Efficient, effective, cost factors.... Bus company review of impact
- Building capacity
- Recognition of proposed growth/developments
- Feeder schools if possible (Elementary to Middle)
- Lasts 3-5 years ... better 5-7 years

Comments, questions, reflections.....

Follow-up/Response to Items from 8-15-17

- GuideK12 brief demonstration



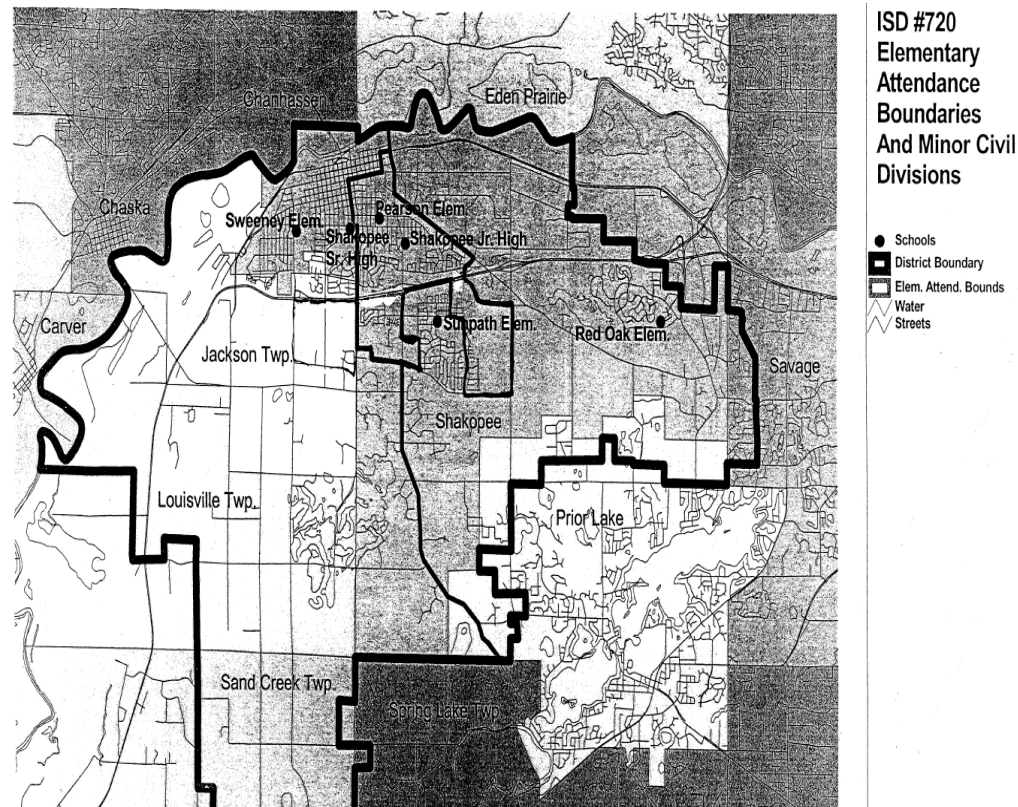
Possible Impact of District Attendance Area Changes

Grade in 2017-18	Graduating Class	System wide changes					Targeted changes	
		2002-03 Red Oak opened	2007-08 Eagle Creek opened, Sun Path to K-5, all Elem to K-5	2011-12 Jackson opened	2012-13 Pearson and Junior Highs convert to 7-9th grades	2018-19 (Elementary, Middle Schools, and 9-12 HS)	2009-10 Eagle Creek & Red Oak Kindergarteners + siblings to Sun Path (2 yrs early) - family choice	2011-12 Sweeney Kindergarteners to Jackson (1 class)
12	2017-18	X	1→2	X	6→7	X	x	x
11	2018-19	X	K→1	4→5	X	X	4→5	x
10	2019-20	X	X	3→4	X	X	3→4	x
9	2020-21	X	X	2→3	X	X	2→3	x
8	2021-22	X	X	1→2	X	X	1→2	x
7	2022-23	X	X	K→1	X	7→8	K→1	~20 SW kids to JA
6	2023-24	X	X	X	X	X	x	X
5	2024-25	X	X	X	X	X	x	X
4	2025-26	X	X	X	X	4→5	x	X
3	2026-27	X	X	X	X	3→4	x	X
2	2027-28	X	X	X	X	2→3	x	X
1	2028-29	X	X	X	X	1→2	x	X
K	2029-30	X	X	X	X	K→1	x	X

Attendance Area Change History

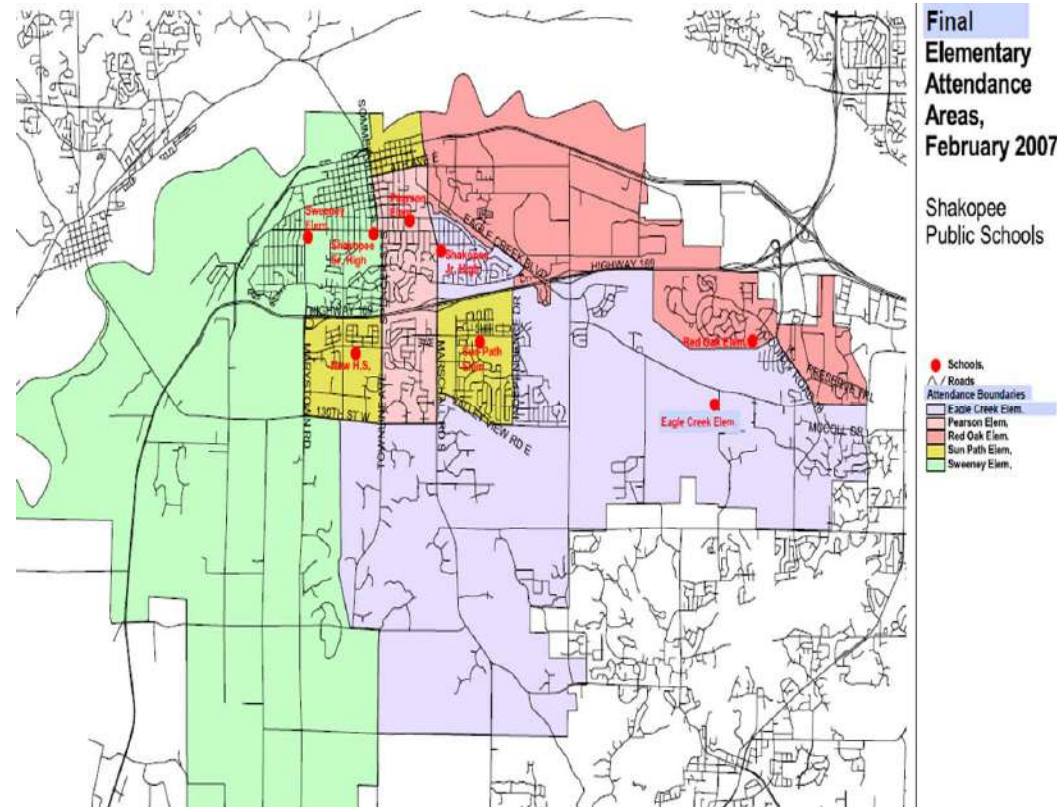
- Highlighted cells indicate a grade level that may have been impacted by the attendance area changes.
- The student may have moved from one school to another during that year.
- Green highlight indicates changes that were voluntarily made 2 years early

2002-03 to 2006-07 (5 years)



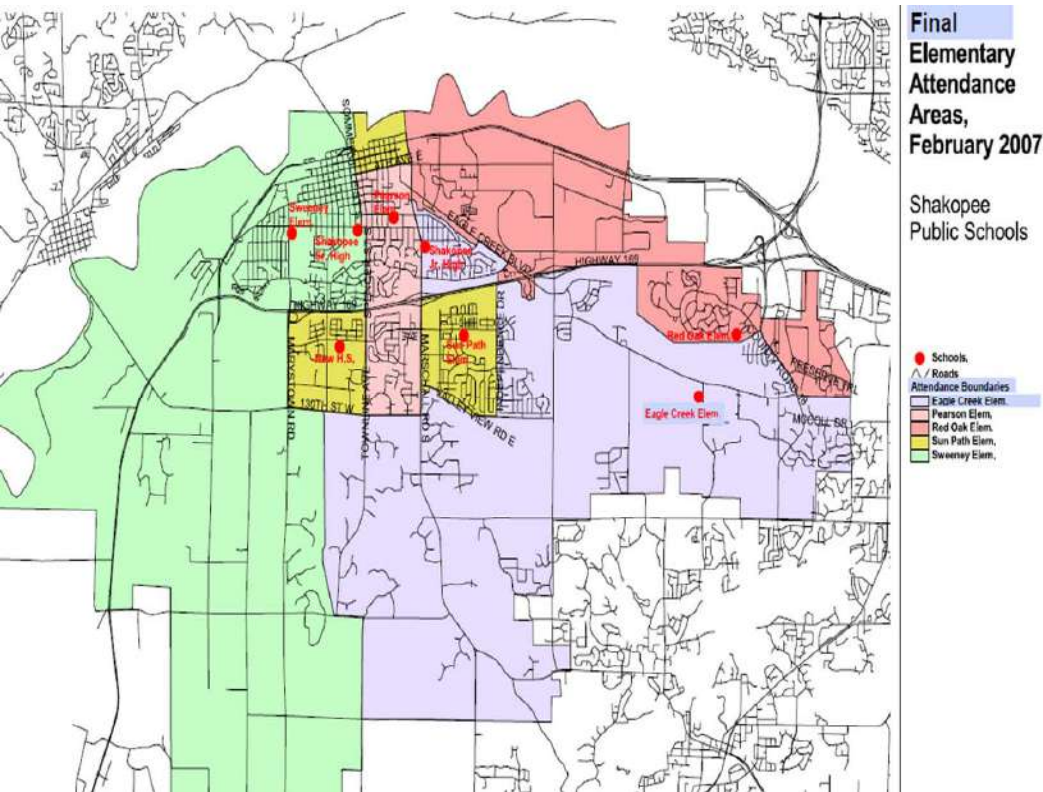
Note: 3 elementary schools-SW, P, RO. Sun Path was a 5th & 6th grade only school (4,250 students spr '02)

2007-08 to 2011-12 (5 years)



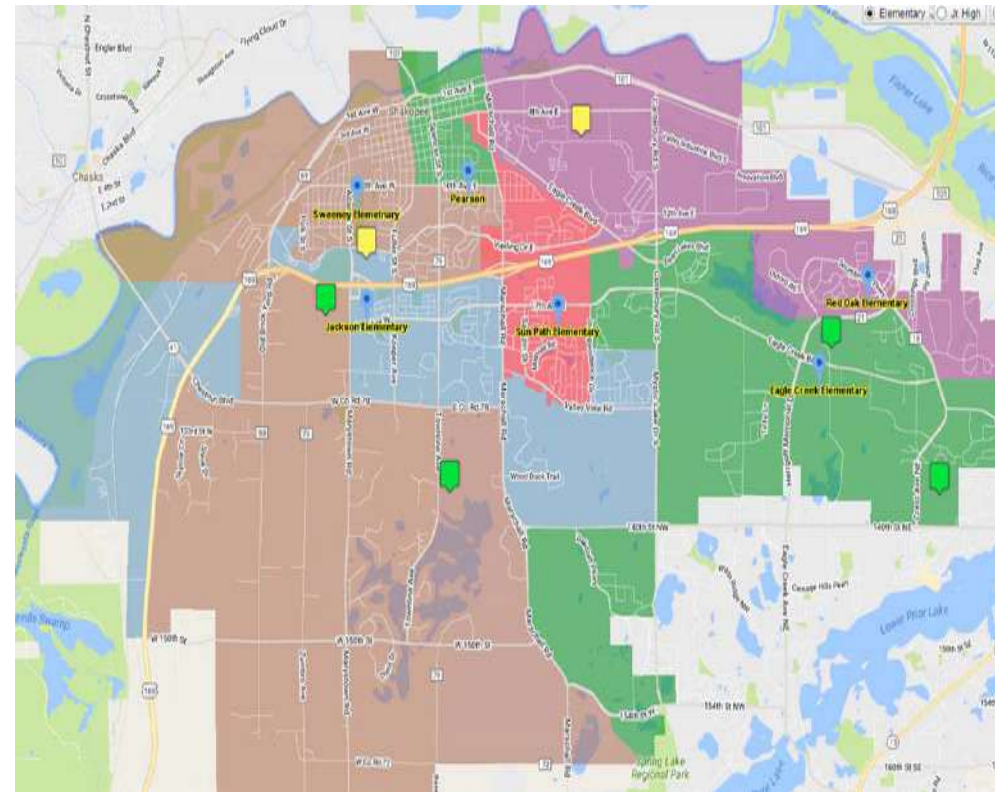
Note: 5 elementary schools-SW, P, RO, SP, EC (5,726 students spr '07....additional ~1,476 students)

2007-08 to 2011-12 (5 years)



Note: 5 elementary schools-SW, P, RO, SP, EC (5,726 students spr '07....additional ~1,476 students)

2012-13 to 2017-18 (6 years)



Note: 5 elementary schools-SW, RO, SP, EC,JA (7,236 students spr '12....additional ~1,510 students... spring of 2017 ~8,300 students... additional ~1,060 students)

Neighborhoods with repeated moves... are there areas hit more than others? Which?

Student Movement Class of 2023 (current grade 7)

2015-16

2016-17

2017-18

2018-19

2019-20



5th

6th

7th

8th

9th

Currently, 3 Transitions are planned over 5 years. The attendance area and grade configuration changes could lead to 4 transitions in 4 years for:

1A-222 Grade 7 students (45 JA->P, 83 from EC to other areas, 94 SP JH switch from East to West)

2A-63 Grade 7 students (45 from JA to P +18 from EC to RO)

2B-58 Grade 7 students (40 from JA to P + 18 from EC to RO)

Intra-District Transfers (Current Thinking)

- Would like to allow as many as possible... subject to:
 - Capacity
 - Staffing
- Daycare requests....
- “Batching” of preference requests with specified deadlines
 - Example: Check impact of all requests received by a set date/dates
 - A deadline where no further requests would be approved due to staffing/planning implications
- Requests re-done annually??
- Bussing not provided outside of the attendance area. Transfer requests would not come with bussing.

Communication Plan (Ashley)

- What is the best way to make sure the community is informed and individual voices are heard?
- Listening Session structure (90 minutes)
- Presentation 15 minutes, 5 minute question assembly, 70 minute Q & A
 - What background information/opening presentation should be shared?
 - How do we take questions?
 - Proposal
 - Role of Task Force, Board, Superintendent....?
 - Handouts?