

At home Learning Module 1
Year 7, Visual Arts 2020.

Archibald Prize Portraiture Task



Learning Intention: To investigate and interpret the Archibald Prize and revision of the frames.

Success Criteria: I will be able to fill out the table, research the questions and answer in full sentences.



Creative and critical enquirers



Knowledgeable and resourceful thinkers

ARCHIBALD TASK

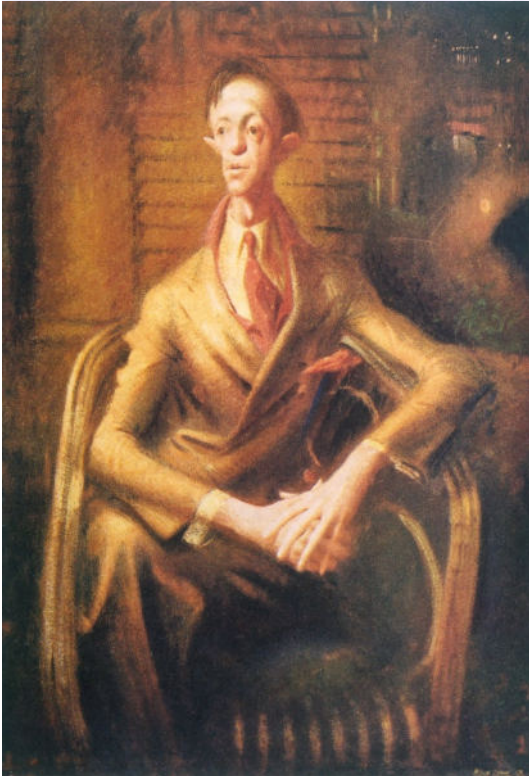
This is your first remote learning activity which requires you to answer the questions in the table and complete the frame questions on artist Ben Quilty's work of Margaret Olley.

LEARNING ACTIVITIES

1. Complete the Questions on Page 3.
2. Complete the Frame Questions on Page 4.
3. Continuous Line Drawing on Page 5.

Questions

1. What is the Archibald Prize?
2. List some dot points on the history of the Archibald prize. It must be at least 5-6 dot points.



3. Analyse William Dobell's submission of his portrait of Joshua Smith, 1943 and answer the following questions:

- Do you think it is a portrait why/ why not?
- What defines a portrait?
- What can you see in the portrait?
- How does it make you feel?
- Is it a realistic portrait?
- Why do you think he chose to paint in this style?



Ben Quilty

Ben Quilty won the Archibald for his portrait of Margaret Olley in 2011. Using the Frames questions below analyse his work on Margaret Olley.

You can reference the website <https://www.artgallery.nsw.gov.au/prizes/archibald/2011/28931/> to find out more information on what his intentions were when he painted Margaret Olley.

STRUCTURAL

What form is the artwork? eg painting, sculpture, installation, mural

What materials and techniques have been used to make it?

Describe the composition? (What is in the painting?)

What is the size?

Describe the use of art elements such as colour, shape and tone

SUBJECTIVE

What is my first impression of the artwork?

What do I see,?

How do I feel?

What emotions does the artist want to express?

Why did the artist make it?

What is it about?



CULTURAL

When was the artwork made?

Where was it made?

Who is the painting of?

Why is she significant?

What is she known for?

POST – MODERN

Does the artwork produce irony or wit?

What art conventions/traditions or art practices does the artwork challenge?

How was the artwork created?

Continuous Line Drawing

Definition: A continuous line drawing is produced without ever lifting the drawing instrument from the page. This means that, in addition to outlines and internal shapes, the pencil must move back and forth across the surface of the paper, with lines doubling back on each other, so that the drawing is one free-flowing, unbroken line. To avoid the temptation to erase lines. It can be helpful to complete a continuous line drawing with an ink pen, varying the line weight, as needed, to indicate perspective and areas of light and shadow. This drawing method develops confidence and drawing speed, and encourages your eyes and hand and brain to all work together.

Materials needed:

- A4 paper
- Pencil
- Picture of a face

Task

1. Watch the video <https://www.youtube.com/watch?v=Hfx6JbZoDhE>
2. Have your photo in front on your and your A4 paper
3. Attempt to redraw your portrait as a continuous line drawing remembering to not lift your pencil off the page.
4. Take a photo or scan and submit online.

