

Warm Color Scheme

Color inspires, energizes, soothes, and enlivens. See how switching from a warm color scheme to a cool one changes the mood.



This is a non-commercial, and is to be used for educational or research purposes only. "Fair use" is claimed under U.S. copyright law, sections 107 and 108. No commercial use of these images is permitted without the consent of the copyright holder.

Cool Color Scheme

Cool and soothing colors are located on the left side of our color wheel. You can use color to energize, or to cool down. By selecting the right color scheme, you can create an ambiance of elegance, warmth or tranquility.



CUBISM

Cubism was a 20th century art movement, pioneered by Pablo Picasso and Georges Braque, that revolutionized European painting.



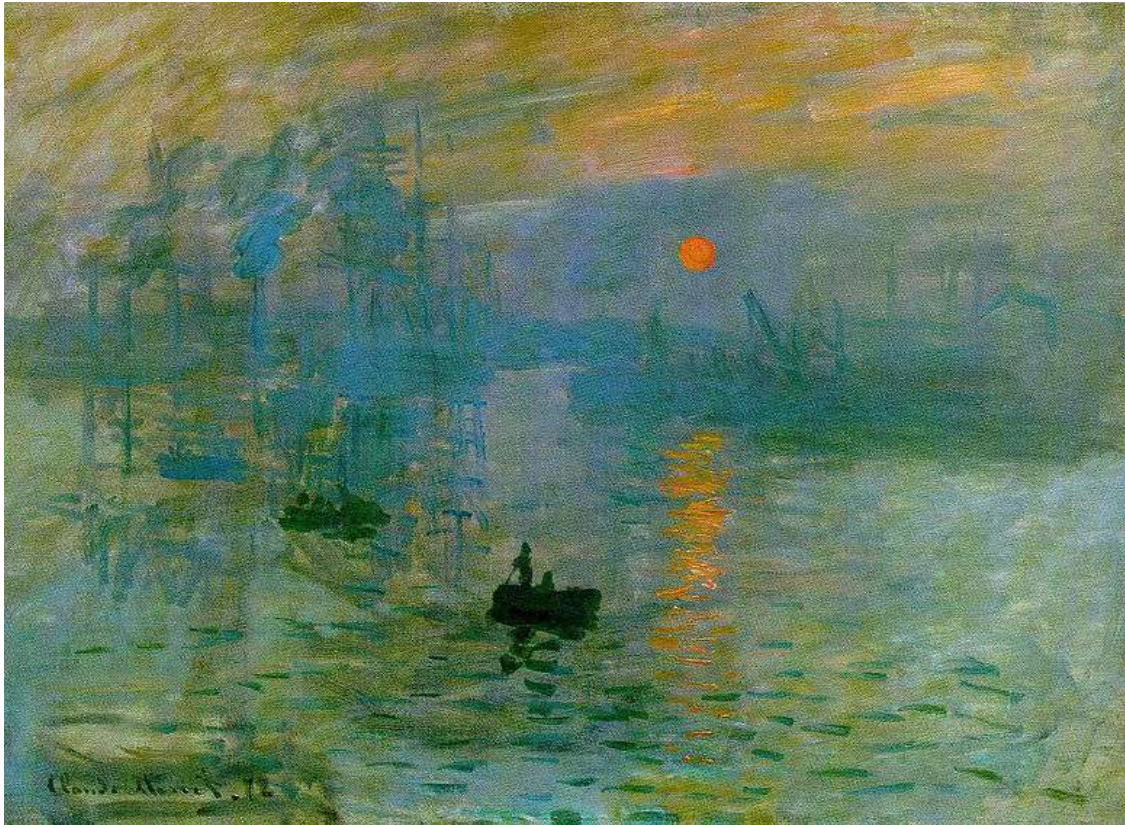
- **Cubist artworks, objects are broken up, analyzed, and re-assembled in an abstracted form.**
- **Instead of depicting objects from one viewpoint, the artist depicts the subject from a multitude of viewpoints to represent the subject in a greater context**



Picasso

Impressionism

Impressionism was a 19th-century art movement that began as a loose association of Paris-based artists exhibiting their art publicly in the 1860s. The name of the movement is derived from the title of a Claude Monet work, *Impression, Sunrise*.



Claude Monet

- **Characteristics of Impressionist painting include visible brushstrokes, open composition, emphasis on light in its changing qualities.**
- **Often accentuating the effects of the passage of time.**
- **Ordinary subject matter, the inclusion of *movement* as a crucial element of human perception and experience, and unusual visual angles.**

Photorealism

Photorealism is the genre of painting based on making a painting of a photograph. The term is primarily applied to paintings from the United States photorealism art movement that began in the late 1960s, early 1970s.



Chuck Close

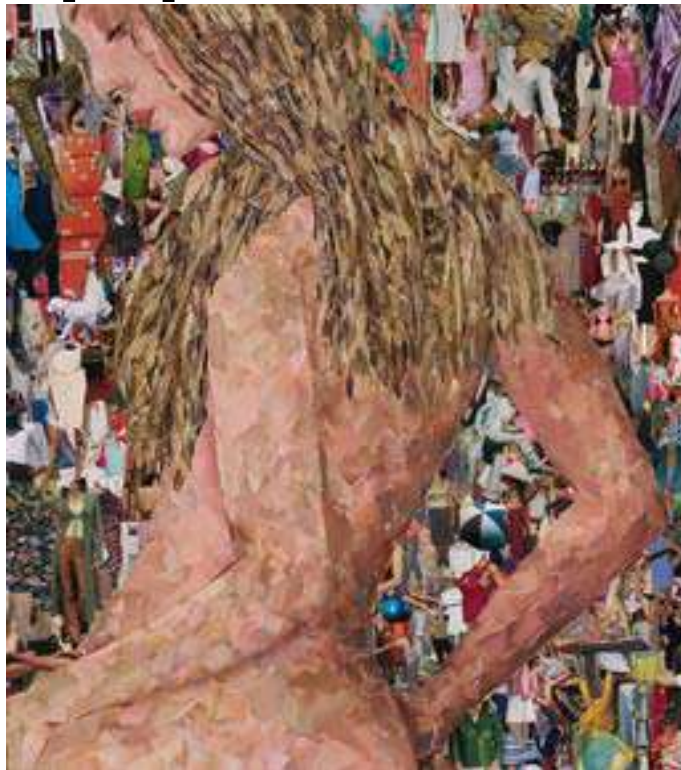
- **Photorealist painting cannot exist without the photograph.**
- **In Photorealism change and movement must be frozen in time which must then be accurately represented by the artist.**
- **Photorealists gather their imagery and information with the camera and photograph.**
- **Once the photograph is developed (usually onto a photographic slide) the artist will systematically transfer the image from the photographic slide onto canvases.**

Collage

A **collage** (From the French: *coller*, to glue) is a work of formal art, primarily in the visual arts, made from an assemblage of different forms, thus creating a new whole. Use of this technique made its dramatic appearance among oil paintings in the early 20th century as an art form of groundbreaking novelty.



- **An artistic collage work may include newspaper clippings, ribbons, bits of colored or hand-made papers, pieces of magazine color, portions of other artwork, photographs, and such, glued to a piece of paper or canvas.**



Style and Scheme Acrylic Study

- **Choose a picture from which to work**
- The picture must have active content in all areas, particularly the edges and corners.
- **Cut the paper so it is in proportion to your picture.**
- **Grid the picture and your paper.**
- **Sketch out *lightly*.**
- *Criteria: Size, shape, and proportion must be accurate.*

- **Plan out your piece so there are 8 sections in the following media:**
- **One with Photorealism/Color Matching**
- *Criteria: the paint colors match the colors in the picture.*
- **One with Collage**
- *Criteria: The collage pieces match the colors in the picture.*
- **One with Warm Colors plus white**
- Mix the warm with each other and with white.
- *Criteria: The values in your piece match the values in the picture. There is a variety of mixed complementary colors.*
- **One with Cool Color**
- Choose five colors which are next to each other on the color wheel.
- *Criteria: Use a wide range of color and value.*

- **One with Impressionism (Monet-like)**
- *Criteria: the values in the section match the values in the picture.*
- **One with Cubism (Picasso-like)**
- *Criteria: Match the values in the picture using a wide range of value from light to dark.*
- **Two in your choice of media**
- You may use the same medium or two different media.
- **Choices:**
- Chalk pastel, oil pastel, color pencil, crayon, tempera, watercolor: *Criteria: Blend or layer the colors to match the colors and values in the picture.*

- **Attach a self-critique and a peer group critique from 2 – 3 other people.**

**Critique statements address specific strengths and weaknesses of the work.*

Collage

Cool Colors

Warm Colors

Choice

Cubism

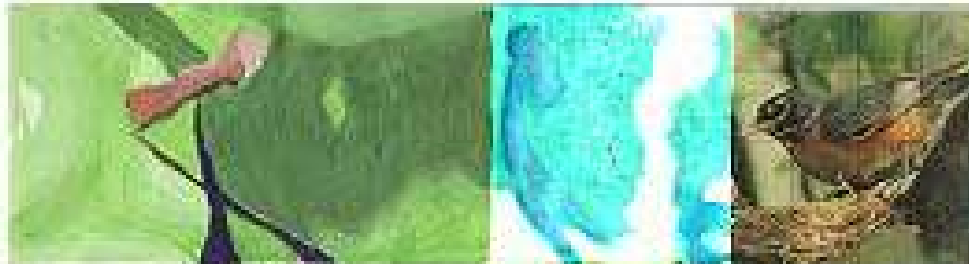
Impressionism

Choice

Photorealism



Cool Colors



Collage

Choice

Warm Colors

Cubism



Photorealism

Impressionism



Choice