

DEFINITION

Form refers to the physical 3D shape of an object.

Form is one of the seven elements of art.

RELATED WORDS

- Sculpture
- 3D shape
- Structure

FORM

"Although Moore's *Recumbent Figure* was made in 1938 and is a work of modern art, it's simple, powerful **form** suggests an ancient object."

USED IN A SENTENCE



Henry Moore, *Recumbent Figure*, 1938

DEFINITION

Tone refers to the lightness or darkness of a colour. One colour can have an almost infinite number of different tones.

Tone is one of the seven elements of art.

RELATED WORDS

- Shade
- Value
- Tenebrism
- Tonal Value

TONE

"**Tone** is an essential tool for artists; without it, a painting can appear flat and lifeless."

USED IN A SENTENCE



Rembrandt, *The Night Watch*, 1642

DEFINITION

The principle of scale refers to the relative size of one object compared to another in an artwork./artworks.

RELATED WORDS

- Size
- Proportion
- Ratio

SCALE

"Many contemporary artists play with **scale**, including some of the best known such as Jeff Koons."

USED IN A SENTENCE



Jeff Coons, *Baloon Dog (Orange)*, 1994-2000

DEFINITION

An item made from clay, permanently hardened by heat. This could be a pot, sculpture, tile etc.

RELATED WORDS

- Sculpture
- Pottery
- Clay

CERAMIC

"Grayson Perry is known for his highly decorative **ceramic** vases."

USED IN A SENTENCE



Grayson Perry, Matching Pair, 2017

DEFINITION

Muted colours are dulled, greyed or desaturated. The opposite of a muted colour is a vibrant or vivid colour

RELATED WORDS

- Dull
- Subdued
- Soft

MUTED

"Morandi uses a **muted** colour palette that ranges from light and medium grey to cream white, beige, pale yellow and mauve."

USED IN A SENTENCE



Giorgio Morandi, Still Life, 1946

DEFINITION

A line is a mark made on a surface that joins different points. Lines can vary in length, width, direction and shape.

Line is one of the seven elements of art.

RELATED WORDS

- Horizontal
- Vertical
- Parallel

LINE

"A few simple **lines** on a page can indicate movement, shape, pattern and more."

USED IN A SENTENCE



Kenneth Martin, Seventeen Lines, 1959-63

DEFINITION

Color is the element of art that is produced when light is reflected back to the eye. Colour is used in art to create atmosphere.

Colour is one of the seven elements of art.

COLOUR

RELATED WORDS

- Hue
- Tinge
- Pigment

"Rothko's paintings of the 1950s are characterized by a simple use of form, brilliant hues, and broad, thin washes of **colour**."

USED IN A SENTENCE



Mark Rothko, *Orange and Tan*, 1954

DEFINITION

a shape is two-dimensional, flat, or limited to height and width. Shapes can be geometric (like in maths) or organic (like in nature).

Shape is one of the seven elements of art.

SHAPE

"Kandinsky felt that he could express feelings and music through colours and **shapes** in his artworks."

USED IN A SENTENCE

RELATED WORDS

- Negative space
- Organic
- Geometric



Wassily Kandinsky, *Composition VIII*, 1923

DEFINITION

Vibrant can be used to describe an artwork in which the colour or light is strong and bright.

RELATED WORDS

- Vivid
- Intense
- Bright

VIBRANT

"This 1928 masterpiece of colour is titled Castle and Sun and features a wide array of shapes that are made up of **vibrant**, bold colours."

USED IN A SENTENCE



Paul Klee, *Castle and Sun*, 1928

DEFINITION

Abstract art is art that does not attempt to represent external reality, but rather seeks to achieve its effect using shapes, colours, and textures. It is the opposite of realism.

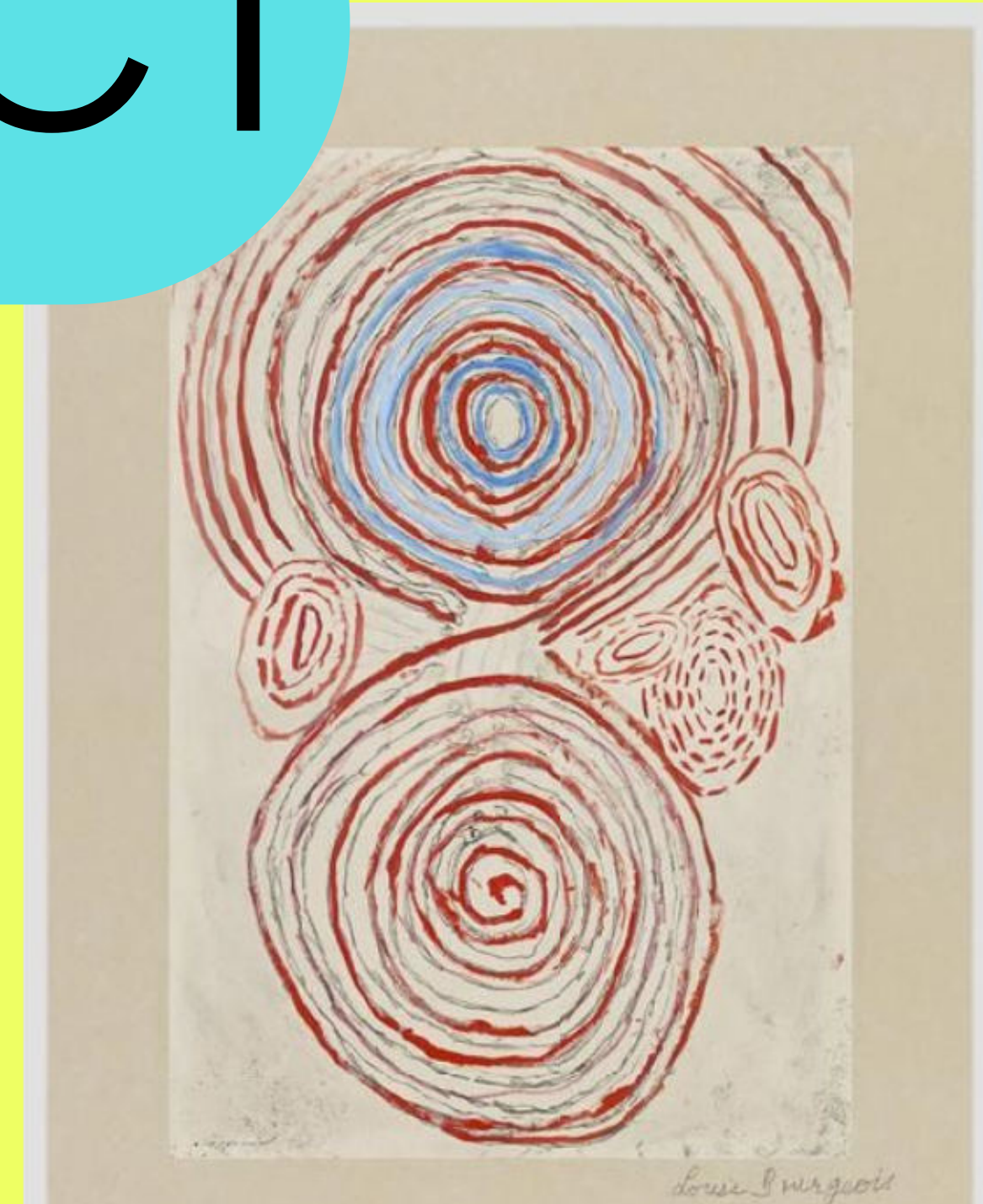
RELATED WORDS

- Conceptual
- Expressionism
- Modern Art

ABSTRACT

"For Bourgeois, **abstraction** was a tool for understanding and coping with her feelings, which were always the driving forces of her art."

USED IN A SENTENCE



Louise Bourgeois, *Labyrinth*, 2004

DEFINITION

Realism is when an artwork represent subject matter truthfully. It is the opposite of abstract.

RELATED WORDS

- Naturalism
- Photo Realism

REALISM

"Edward Hopper's Nighthawks remains today one of the most iconic works of American **Realism**."

USED IN A SENTENCE



Edward Hopper, Nighthawks, 1942

DEFINITION

Texture is the perceived surface quality of a work of art. An artwork might have visual texture or physical texture. Texture is one of the seven elements of art.

RELATED WORDS

- Feel
- Surface
- Touch

TEXTURE

"Van Gogh created many heavily **textured** artworks. He used thick application of oil paint in an expressive manner. This creates an artwork that has a rough **texture** as well as a raised surface."

USED IN A SENTENCE



Vincent Van Gogh, *Noon, or The Siesta After Millet*, 1890

DEFINITION

Decorative is often used to describe functional objects, architecture or interiors that are highly ornate and beautiful.

RELATED WORDS

- Ornamental
- Embellished
- Attractive

DECORATIVE

"More than any other British designer of the **decorative** arts, William Morris brought the natural world indoors through the many wallpapers he produced during his lifetime."

USED IN A SENTENCE



William Morris, *Strawberry Thief*, 1883

DEFINITION

Minimalist art is composed of simple shapes and little variety of colour. With minimalism, no attempt is made to represent reality, the artist wants the viewer to respond only to what is in front of them.

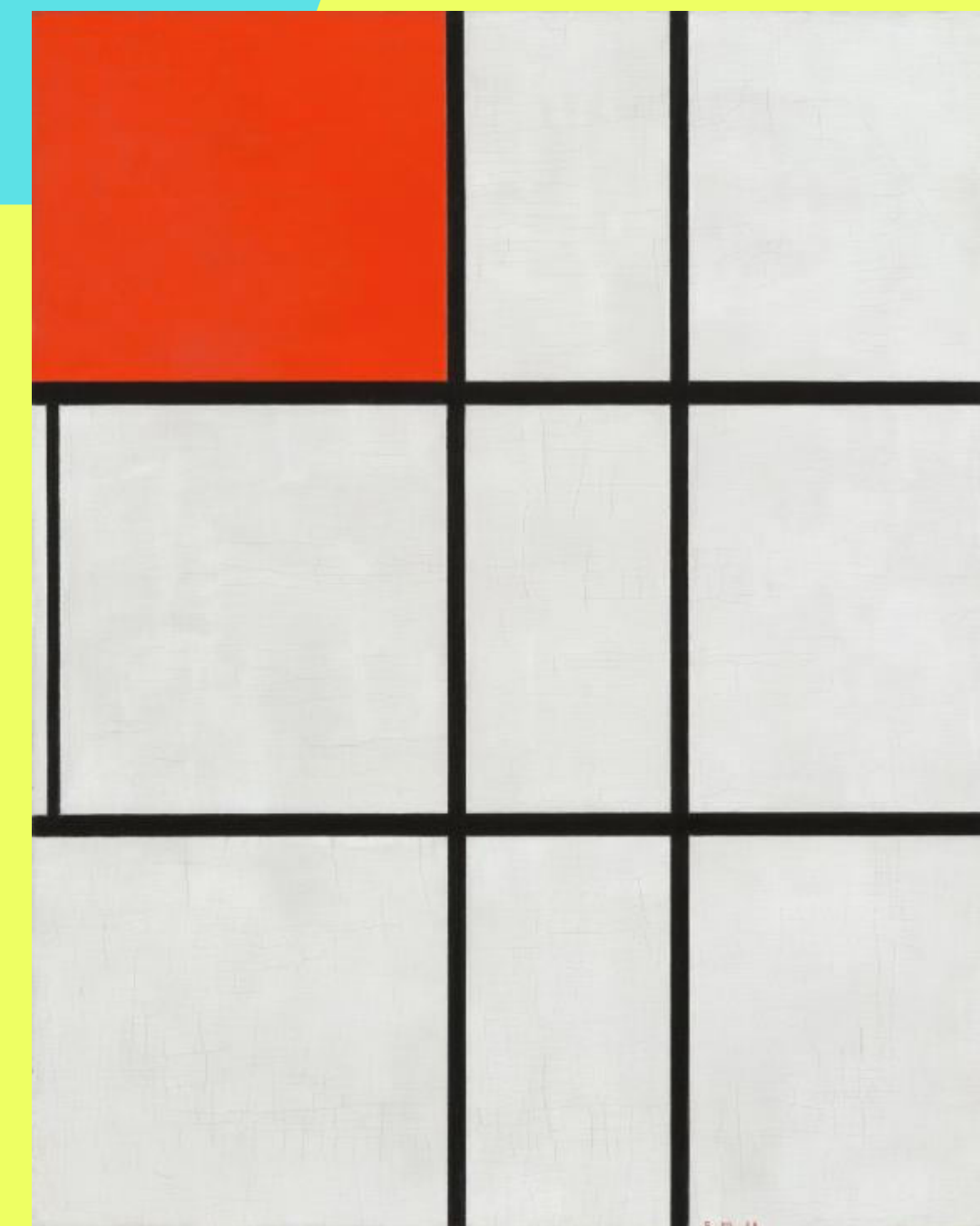
RELATED WORDS

- Modernism
- Aesthetic
- Understated

MINIMALIST

"Piet Mondrian is considered to be an originator of **minimalism**."

USED IN A SENTENCE



Piet Mondrian, *Composition B (no III) with Red*, 1935

DEFINITION

Organic is used to describe shapes and forms that are irregular and imperfect. They are often curved, flowing and unpredictable.

RELATED WORDS

- Natural
- Curved

ORGANIC

"Matisse created his cut-outs using inspiration from **organic** forms."

USED IN A SENTENCE



Henri Matisse, *The Sheaf*, 1953

DEFINITION

An artwork that is made up of "regular" lines and shapes such as squares, triangles and other mathematical shapes.

RELATED WORDS

- Maths
- Line
- Angle

GEOMETRIC

"The broken, **geometric** shapes in Picasso's *Weeping Woman* represent her struggles and sadness."

USED IN A SENTENCE



Pablo Picasso, *Weeping Woman*, 1937

DEFINITION

The tone or mood of an artwork.

The multiple elements of an artwork work together to create the atmosphere.

RELATED WORDS

- Mood
- Feeling
- Tone

ATMOSPHERE

"Colour can strongly influence the **atmosphere** of an artwork, as seen in Picasso's "blue period", where he used blue to create an **atmosphere** of misery and despair."

USED IN A SENTENCE



Pablo Picasso, *The Old Guitarist*, 1903

DEFINITION

Composition refers to the arrangements of elements in an artwork.

RELATED WORDS

- Arrangement
- Structure
- Placement

COMPOSITION

"A classical **composition** follows a geometric structure, creating balance. This can be seen in the grouping of the animals in *Mares and Foals*."

USED IN A SENTENCE



George Stubbs, *Mare and Foals in a River Landscape*, 1763-8

DEFINITION

Two or more things placed near each other in an artwork that create a contrasting or interesting effect.

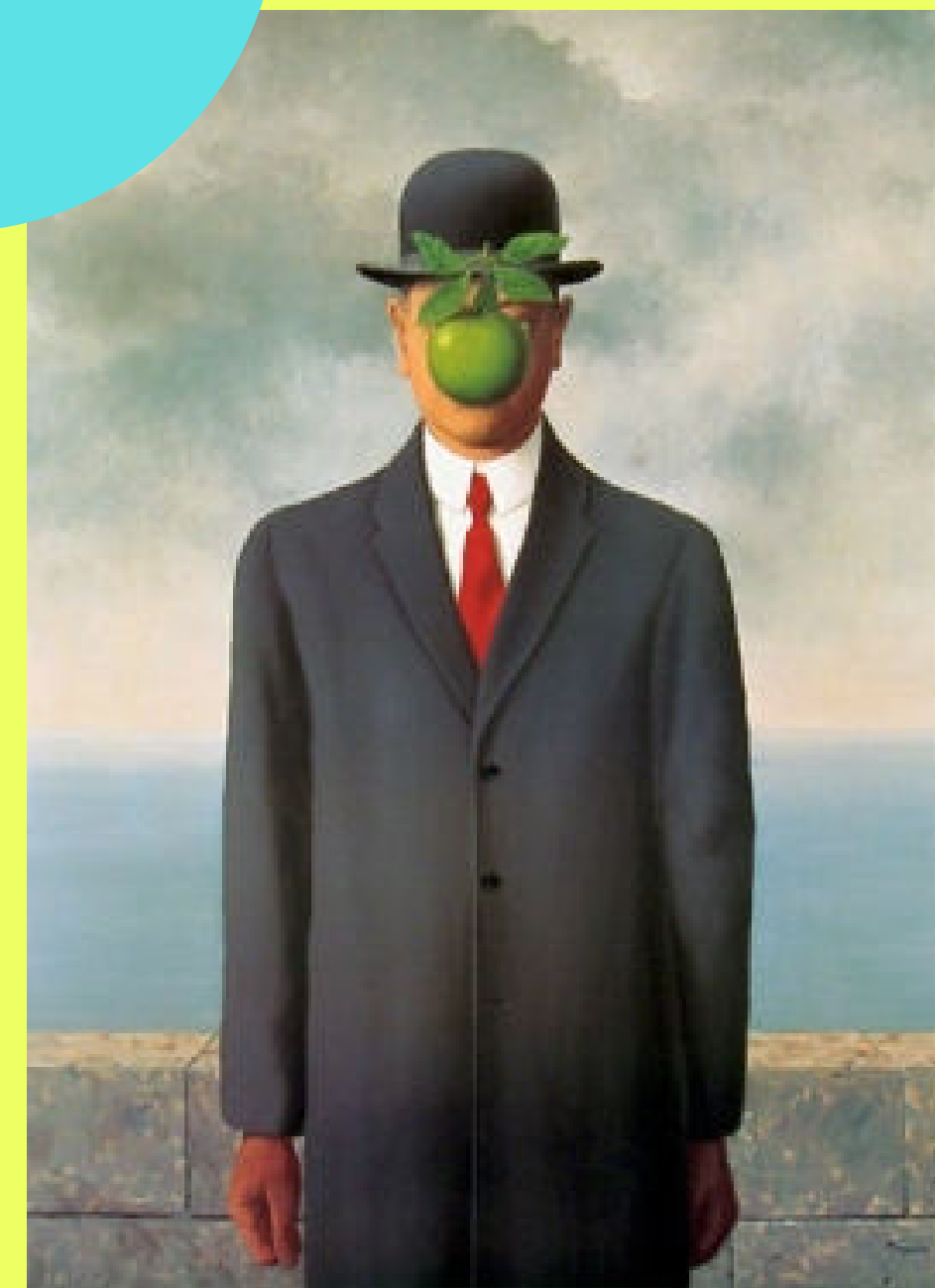
RELATED WORDS

- Opposite
- Contrast
- Comparison

JUXTAPOSITION

"Essentially what Magritte was famous for during his time as a surrealist, was the juxtaposition of objects."

USED IN A SENTENCE



René Magritte, *The Son of Man*, 1964