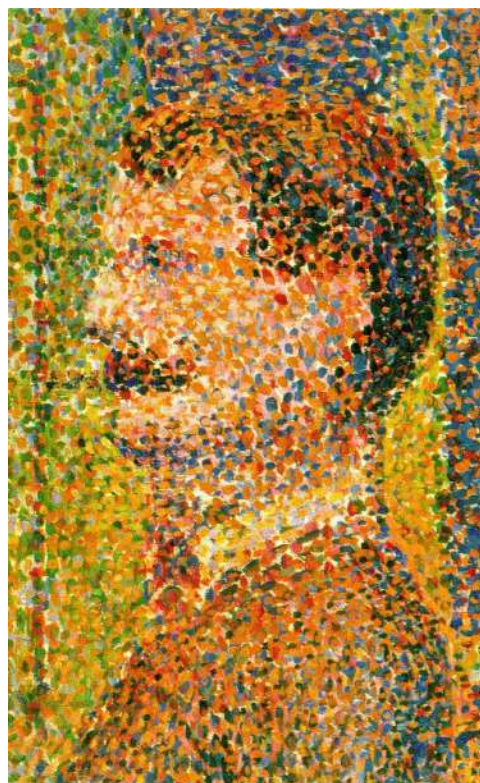
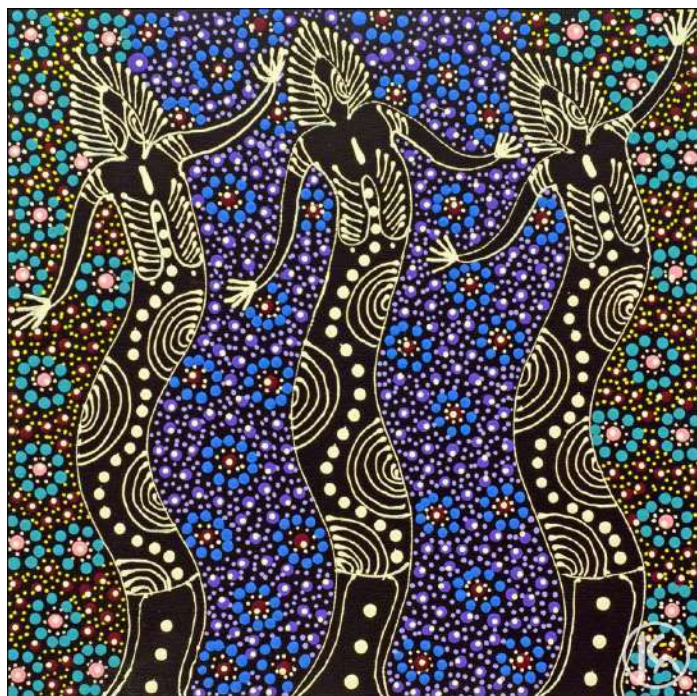


COMPARE AND CONTRAST



Answer the following in complete sentences:

What type of media do you think was used?
(what is used to create the art)

What do YOU think is going on in this artwork?

Describe the lines, colors, shapes, and patterns in
this artwork (how are they used, where are they
used):

How would you describe this artwork to someone
that cannot see it?

Answer the following in complete sentences:

What type of media do you think was used?
(what is used to create the art)

What do YOU think is going on in this artwork?

Describe the lines, colors, shapes, and patterns in
this artwork (how are they used, where are they
used):

How would you describe this artwork to someone
that cannot see it?

--	--

Write three sentences describing the similarities between these works of art above.

--

Write three sentences describing the differences between these works of art above.

--