



# WOODLAND ELEMENTARY SCHOOL

## WEEKLY NOTES

April 25, 2018

- On Friday, April 27th, 3rd grade is going on a field trip to the Heart of the Valley YMCA.
- **ATTENTION 4TH GRADE PARENTS!** Woodland Intermediate new student orientation will be on Tuesday, May 8th from 6:00 pm until 7:00 pm in the Woodland gym. Students participating in band should plan to arrive with their parents at 5:00 pm in the Woodland Commons for a short informational meeting. Please see the attached flyer for more details.
- Interested in band? Students in 4th grade have started trying out instruments this week. A permission slip was sent home last week. Please be sure to return the slip as soon as possible. All 4th graders and their parents are asked to attend the band parent meeting on Tuesday, May 8th at 5:00 pm in the Woodland cafeteria. Everything you need to know about having a child in band and choir will be presented that evening. Please make sure you return your signup sheet once you attend the meeting. Thank you!
- Friday, May 11th, is a 12:00 pm release for all elementary students.
- Continue saving your aluminum cans for the 10th annual Woodland Can Drive to be held the week of April 30th - May 5th. The can drive will close with a brat fry on Saturday, May 5th from 11:00 am until 1:00 pm. All proceeds from cans turned in and sales will go to our UNLESS cancer fundraiser. We are in need of many donations to help make this event a success. Please click [here](#) to access the sign up genius if you are able to help out with this exciting school event. All donations should be to school by 3:30 pm on Friday, May 4th. Thank you!
- This year's UNLESS t-shirts are now on sale. Please click [here](#) to access the order form. Also check out the attached flyer for more details. Orders are due by Thursday, May 3rd.
- Every Woodland student will receive a free 2018 Fun Run t-shirt next fall. T-shirt sizes need to be collected prior to the end of this school year. Please click [here](#) to access a google form so we know what size to order for your child. When choosing the size, please keep in mind that they will not get the shirt until next September. Orders are due by Friday, May 4th. Thank you!
- It's that time of year again...time to think about the easy way to buy back to school supplies! Please click [here](#) to get started with your order from 1st Day School Supplies. Orders are due by June 15th.
- Save the date! The Woodland School picture day for the 2018/2019 school year will be held on Thursday, August 16th from 11:00 am until 6:00 pm.
- Please see the attached flyer or visit the KASD website and check out the [Community Events](#) page for more great opportunities and activities for your family.

# UnLess...

*Fighting Cancer Since 2009*  
online store

1. Go to the online store at <https://unless2018.itemorder.com>
2. Choose your items and add them to your cart
3. Securely checkout with your credit card

**Online Store Deadline:** **May 3rd, 2018**

**64000/64500B - Gildan  
Adult & Youth  
Softstyle® T-Shirt**



**64400 - Gildan  
Softstyle® Long  
Sleeve T-Shirt**



**2400B - Gildan® -  
Youth Ultra Cotton®  
Long Sleeve T-Shirt**



**PC78H/PC90YH - Port  
& Company® Adult &  
Youth - Core Fleece  
Pullover Hooded  
Sweatshirt**



\* Orders will be picked up at the Kaukauna Retail Store  
(1810 Crooks Ave).

**(Click Here To Enter Store)**

Questions?  
Kelly Kieffer  
920-687-7260  
[kkieffer@egpromo.com](mailto:kkieffer@egpromo.com)  
<http://www.egpromo.com>

<https://unless2018.itemorder.com/sale>

"To expedite your order pickup, please have a copy of your "Order Confirmation" that was emailed to you upon completing your online order. A paper printout or digital copy on your smart phone or tablet are acceptable."

Eagle Graphics reserves the right to substitute a similar brand and/or color due to apparel manufacturer defects or lack of inventory at time of printing. Orders turned in after the due date will incur a \$25.00 reset up fee per design. Orders turned in 2 weeks after due date will not be accepted. Items on this form are custom made to order and only returnable or refundable due to manufacturer defects."

# UNLESS...

## WOODLAND SCHOOL'S

**Brat Fry and Bake Sale**  
**on May 5th 11am-1pm**  
**LOCATED IN THE LUNCHROOM**



**Can Drive**  
**April 30th-May 5th**

**ALL CANS GO IN THE DUMPSTER**  
**NO CANS ON THE BUS**

"UNLESS someone like you  
cares a whole awful lot,  
nothing is going to get better.  
It's Not." -Lorax

**BE A PART OF**  
**SOMETHING GREAT,**  
**BECAUSE YOU CAN**  
**MAKE A**  
**DIFFERENCE!**



**Last Year We Collected**  
**1,584 Pounds Of Cans**  
**LET'S Crush THIS!**

# WOODLAND INTERMEDIATE NEW STUDENT ORIENTATION

Tuesday, May 8; 6:00-7:00 PM  
Woodland Gym



All students in the Kimberly Area School District who will be attending 5th Grade at Woodland Intermediate School in the Fall of 2018 are welcome to attend our New Student Orientation.

The Orientation session will include a presentation, overview of schedules and classes, introduction of the Woodland Intermediate staff, and a self-guided school tour.

*Note: Students interested in participating in band are asked to join Ms. Shimek and Mrs. Carpenter for a meeting from 5:00-6:00 PM in the Woodland School Commons.*





# Upcoming COMMUNITY EVENTS

- [WI DNR Boater Safety Classes](#), March, April and May, various dates and locations offering
- [YMCA Kids Fun Night](#), April 28, 2018
- [Girls Intro to Hockey](#) at Fox River Girls Hockey Club, April and May 2018
- [Kimberly High School Car Show May 19, 2018](#)
- [4H Summer Camp](#) at Upham Woods Outdoor Learning Center July 8-12, 2018
- [YMCA Camp Nan A Bo Sho](#) Summer 2018 Camp Offerings
- 2018 Baseball/Softball/Tee Ball [Registration](#) for Combined Locks Rec. Dept.
- 2018 Baseball [Registration](#) and [Information](#) for Kimberly Park and Rec.
- Summer 2018 Summer Program [Guide](#)



## By learning through play in 4K, our students start here and excel here.

*Now accepting kindergarten registrations for next school year!*

Our highly qualified teachers are early childhood experts whose goal is to engage our youngest students through play-based learning.

At the 4K Center for Literacy, students build a strong foundation to continue their studies in Kimberly.

Wrap around care options are also available.

We are accepting kindergarten registrations and open enrollment applications for next school year.

Help us spread the word to families you know!



**Kimberly Area  
School District**

**Start Here,  
Excel Here.**

**Is your Minimizer ready to start here and excel here?**

**Full-service 4K Center • Full-day 5K in Elementary Schools**

*Open enrollment applications accepted until April 30, 2018*

**Learn more about Registration and Open Enrollment:**

**[www.kimberly.k12.wi.us](http://www.kimberly.k12.wi.us) • (920) 788-7900**

The Kimberly Area School District does not discriminate on the basis of race, color, religion, national origin, ancestry, creed, pregnancy, marital status, parental status, sexual orientation, sex, (including transgender status, change of sex or gender identity), or physical, mental, emotional, or learning disability ("Protected Classes") in any of its student programs and activities.

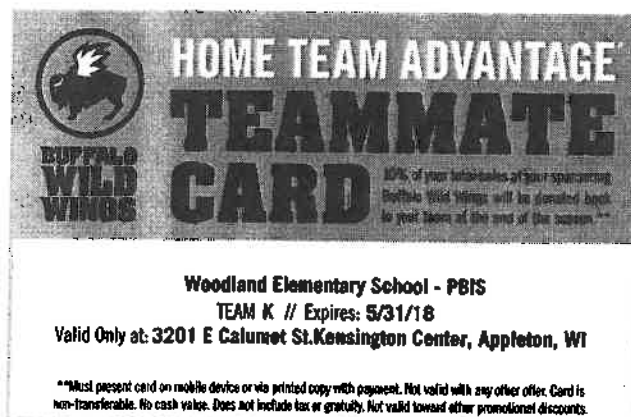
# LET BUFFALO WILD WINGS® GIVE YOU THE **HOME TEAM ADVANTAGE™**

**Woodland Elementary PBIS** has been selected by Buffalo Wild Wings® to participate in the Home Team Advantage Program for the upcoming school year. It is **FREE** and easy to use.

Each time you eat at (or order out) at Buffalo Wild Wings®, mention **TEAM K**. For easy use, snap a picture of the Teammate Card below or cut it out and put the card into your wallet. Buffalo Wild Wings® will donate 10% of your sale back to our school. It is that easy!

This program is effective immediately. Share with your family members and friends.

**THANK YOU!**







# Be a Sub!



## Join our team as a Sub!

Do you enjoy working with children while maintaining a flexible work schedule? Have you considered becoming a substitute teacher?

The Kimberly Area School District is seeking talented Substitute Teachers who want to join a team of ambitious professionals who help all students succeed. Sometimes, our educators are away from their classrooms for things like professional development or when they are ill. That's when we need talented individuals to continue providing a high-quality education to our students.



### Qualifications:

- **Current Wisconsin Educator License**
- **-Or- a Bachelor's Degree** from an accredited Institution of High Education, completion of **Substitute Teacher Training** and current **Substitute Teacher Permit**.
- Have a **Bachelor's Degree** but **not a Substitute Teacher Permit**? Contact us at (920) 788-7900 to learn more about pursuing training to obtain a Substitute Teacher Permit.

Substitute Teachers new to KASD are supported by helpful District staff at each building. The District uses an online Substitute Teacher

System (AESOP) where you can view and customize subbing positions you are most interested in for your subbing career. **KASD offers a competitive daily pay rate for our substitute teachers.**

Are you ready to join a team of talented professionals who help students become community, college and career ready? Complete an application through WECAN (Wisconsin's K-12 hiring website) by visiting <https://services.education.wisc.edu/wecan>.

**Learn more about the Kimberly Area School District at**  
**[www.kimberly.k12.wi.us/careers](http://www.kimberly.k12.wi.us/careers)**

*The Kimberly Area School District does not discriminate against candidates on the basis of race, color, creed, marital status, sex (including transgender status, change of sex, sexual orientation, gender expression, gender transition, gender identity or sexual identity), pregnancy, ancestry, political belief or activity, military or veteran's status, arrest or conviction record, use or non-use of lawful products, religion, national origin, age, disability, or any other status protected by law. Concerns or questions should be directed to the District's Compliance Officer, the Director of Human Resources, at Kimberly Area School District, 425 S Washington Street, Combined Locks WI 54113. We are an equal opportunity employer.*