

GLOBAL CONTEMPORARY ART

224. *The Gates*. New York City, U.S. Christo and Jeanne-Claude. 1979–2005 C.E.
Mixed-media installation. (2 images)



The Gates



The Gates

© Panoramic Images/Getty Images

FORM	FUNCTION
CONTENT	CONTEXT

226. *Horn Players*. Jean-Michel Basquiat. 1983 C.E. Acrylic and oil paintstick on three canvas panels.



Horn Players

FORM	FUNCTION
CONTENT	CONTEXT

228. **Androgyne III.** Magdalena Abakanowicz. 1985 C.E. Burlap, resin, wood, nails, and string.



Androgyne III

FORM	FUNCTION
CONTENT	CONTEXT

227. **Summer Trees.** Song Su-nam. 1983 C.E. Ink on paper.



Summer Trees

FORM	FUNCTION
CONTENT	CONTEXT

229. **A Book from the Sky.** Xu Bing. 1987–1991 C.E. Mixed-media installation



A Book from the Sky

FORM	FUNCTION
CONTENT	CONTEXT

230. *Pink Panther*. Jeff Koons. 1988 C.E.
Glazed porcelain.



Pink Panther

FORM	FUNCTION
CONTENT	CONTEXT

231. *Untitled (#228)*, from the *History Portraits series*. Cindy Sherman. 1990 C.E. Photograph.



Untitled (#228)

FORM	FUNCTION
CONTENT	CONTEXT

235. *Rebellious Silence*, from the *Women of Allah series*. Shirin Neshat (artist); photo by Cynthia Preston. 1994 C.E. Ink on photograph.



FORM	FUNCTION
CONTENT	CONTEXT

232. **Dancing at the Louvre**, from the series **The French Collection, Part I; #1** Faith Ringgold. 1991 C.E. Acrylic on canvas, tie-dyed, pieced fabric border.



Dancing at the Louvre, from the series The French Collection, Part I; #1

FORM	FUNCTION
CONTENT	CONTEXT

233. **Trade (Gifts for Trading Land with White People)**. Jaune Quick-to-See Smith. 1992 C.E. Oil and mixed media on canvas.



Trade (Gifts for Trading Land with White People)

FORM	FUNCTION
CONTENT	CONTEXT

34. **Earth's Creation**. Emily Kame Ngwarreye. 1994 C.E. Synthetic polymer paint on canvas.



Earth's Creation

WISCONSY Australia/Imara © National Museum of Australia/©

FORM	FUNCTION
CONTENT	CONTEXT

237. *Pisupo Lua Afe (Corned Beef 2000)*. Michel Tuffery. 1994 C.E. Mixed media.



Pisupo Lua Afe

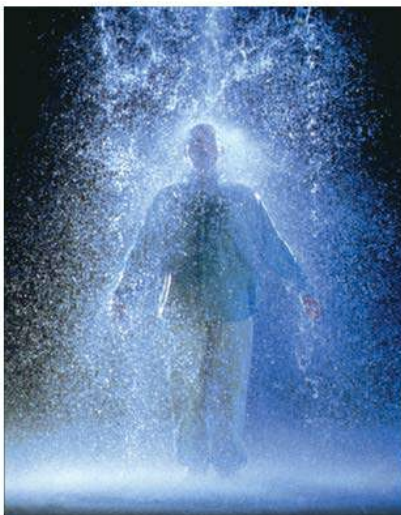
FORM	FUNCTION
CONTENT	CONTEXT

236. *En la Barberia no se Lloro (No Crying Allowed in the Barbershop)*. Pepon Osorio. 1994 C.E. Mixed-media installation.



FORM	FUNCTION
CONTENT	CONTEXT

239. *The Crossing*. Bill Viola. 1996 C.E. Video/sound installation.



FORM	FUNCTION
CONTENT	CONTEXT

25. Vietnam Veterans Memorial. Washington, D.C., U.S. Maya Lin. 1982 C.E. Granite. images)



etnam Veterans Memorial



Detail

FORM	FUNCTION
CONTENT	CONTEXT

241. *Pure Land*. Mariko Mori. 1998 C.E. Color photograph on glass.



Pure Land

FORM	FUNCTION
CONTENT	CONTEXT

246. *Stadia II*. Julie Mehretu. 2004 C.E. Ink and acrylic on canvas.



Stadia II

FORM	FUNCTION
CONTENT	CONTEXT

238. **Electronic Superhighway.** Nam June Paik. 1995 C.E. Mixed-media installation (49-channel closed-circuit video installation, neon, steel, and electronic components).



Electronic Superhighway

FORM	FUNCTION
CONTENT	CONTEXT

240. **Guggenheim Museum Bilbao.** Spain. Frank Gehry (architect). 1997 C.E. Titanium, glass, and limestone. (3 images)



Guggenheim Museum Bilbao
© Rolf Hecht/epa/Outline



Guggenheim Museum Bilbao

FORM	FUNCTION
CONTENT	CONTEXT

242. **Lying with the Wolf.** Kiki Smith. 2001 C.E. Ink and pencil on paper.



Lying with the Wolf

FORM	FUNCTION
CONTENT	CONTEXT

243. *Darkytown Rebellion*. Kara Walker. 2001 C.E. Cut paper and projection on wall.



Darkytown Rebellion

FORM	FUNCTION
CONTENT	CONTEXT

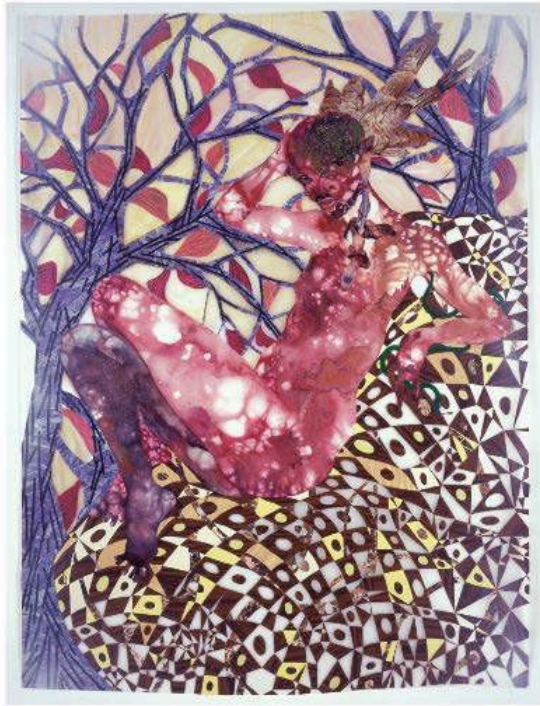
244. *The Swing (after Fragonard)*. Yinka Shonibare. 2001 C.E. Mixed-media installation.



The Swing (after Fragonard)

FORM	FUNCTION
CONTENT	CONTEXT

247. *Preying Mantra*. Wangechi Mutu. 2006 C.E. Mixed media on Mylar.



FORM	FUNCTION
CONTENT	CONTEXT

250. *Kui Hua Zi (Sunflower Seeds)*. Ai Weiwei. 2010–2011 C.E. Sculpted and painted porcelain.



Kui Hua Zi

FORM	FUNCTION
CONTENT	CONTEXT

248. *Shibboleth*. Doris Salcedo. 2007–2008 C.E. Installation.



Shibboleth

FORM	FUNCTION
CONTENT	CONTEXT

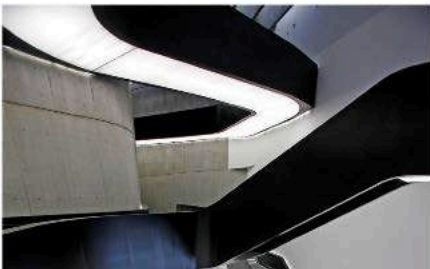
245. *Old Man's Cloth*. El Anatsui. 2003 C.E.
Aluminum and copper wire.



Old Man's Cloth
© Central D. Hays Museum of Art, University of Florida, Gainesville Museum

FORM	FUNCTION
CONTENT	CONTEXT

249. **MAXXI National Museum of XXI Century Arts**. Rome, Italy. Zaha Hadid (architect).
2009 C.E. Glass, steel, and cement. (2 images)



FORM	FUNCTION
CONTENT	CONTEXT

