



# The LinkedIn Alumni Tool



## There's no better place to launch your career

And we can tell you where people who went to your school are and what they're up to. Whether you're a student or recent graduate, the Alumni Tool can help you make academic and career choices based on the actual paths of alumni.



Explore alumni career paths  
from more than



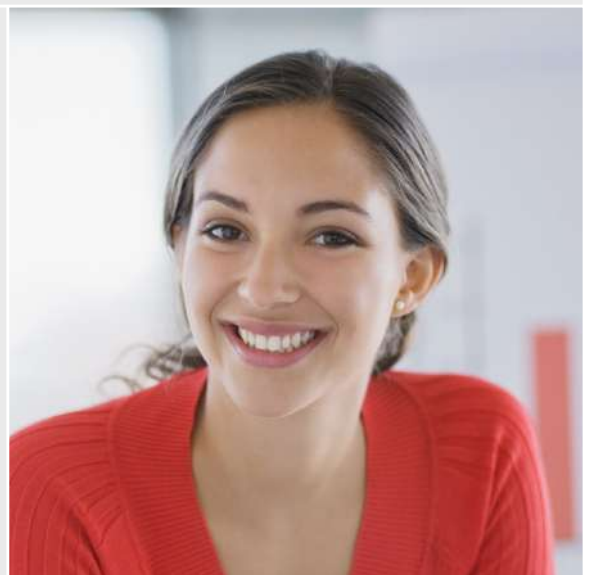
**23k** colleges and  
universities worldwide

## A Career Planning Resource for Students Unlike Any Other

Gathered from the profiles of hundreds of millions of members, LinkedIn's Alumni Tool lets you explore alumni career paths from more than 23,000 colleges and universities worldwide - and build relationships that can help you along the way.

## Explore Any Way You Want

Explore your own school (or any other) to see where graduates live, the organizations they work for, and the types of jobs they've had. You can also narrow down by date range, what they studied, what they're skilled at, and how you're connected on LinkedIn. Just click on any bar in the Alumni Tool to drill down into specific careers, employers, locations, major, skills, or degree of connection.



1

## Choosing a college or graduate program?

Use the Alumni Tool to see which schools place graduates in the types of jobs you want. Search for a school you're interested in, select a relevant field of study, and you'll get a top 25 list of employers that have hired graduates. Click on the names below that to see the paths they took from school to their current positions.

University of California, Los Angeles

Attended - 1900 to 2020 Include people with no dates Change school

**Where they live**

United States	184088
Greater Los Angeles Area	91770
San Francisco Bay Area	25773
Orange County, California Area	12358
Greater New York City Area	8911

**Where they work**

UCLA	3167
Los Angeles Unified School District	838
Kaiser Permanente	657
Northrop Grumman Corporation	572
Google	547

**Your schools**

- Southern Illinois University Carbondale, 2006-2010
- University of Southern California
- University of California, Berkeley
- University of California, Santa Barbara
- University of California, Irvine
- Cornell University
- Boston University

203,238 students & alumni found

**Alumni Profiles:**

- Sarah Walter** (1st) - Researcher (UX, Ethnographer) at San Francisco Bay Area
- Julian Hsu** (2nd) - Software Engineer at Google, Orange County, California Area
- Vikas Jha** (2nd) - CEO at Baniya & A
- Rob Lojek** (2nd) - Technology Director at Envy

2

## Planning your academic path?

The Alumni Tool is a great resource for thinking through what to major (or minor) in, and skills and certifications that will help you in the working world. Check out 'What they studied' and 'What they're skilled at,' for example. Learn from those who have gone before you.

University of California, Los Angeles

Attended - 1900 to 2020 Include people with no dates Change school

**What they studied**

Social Sciences	25032
Business, Management, Marketing, and Economics	20887
Engineering	14943
Economics	10029
Visual and Performing Arts	9388

**What they're skilled at**

Microsoft Office	11400
Public Speaking	10697
Microsoft Excel	9534
Social Media	8780
Strategic Planning	8018

**How you are connected**

1st Connections	0
2nd Connections	235
Group Members	421
3rd + Everyone Else	202593

203,238 students & alumni found

**Alumni Profiles:**

- Sarah Walter** (1st) - Researcher (UX, Ethnographer) at San Francisco Bay Area
- Julian Hsu** (2nd) - Software Engineer at Google, Orange County, California Area
- Vikas Jha** (2nd) - CEO at Baniya & A
- Rob Lojek** (2nd) - Technology Director at Envy

3

## Starting your job hunt?

Let's say you have a specific company in mind you'd like to work for. Use the Alumni Tool to find graduates of your school - and with your major - who work there now. Compare their skills to your own and see where you might need to bulk up. Many alumni want to help current students - reach out to them for an insider's perspective. It's a great way to get your foot in the door.

University of California, Los Angeles

Attended - 1900 to 2020 Include people with no dates Change school

**Where they live**

United States	184088
Greater Los Angeles Area	91770
San Francisco Bay Area	25773
Orange County, California Area	12358
Greater New York City Area	8911

**Where they work**

UCLA	3167
Los Angeles Unified School District	838
Kaiser Permanente	657
Northrop Grumman Corporation	572
Google	547

**What they do**

Entrepreneurship	17949
Education	16076
Media and Communication	14985
Research	12003
Engineering	11406

203,238 students & alumni found

**Alumni Profiles:**

- Sarah Walter** (1st) - Researcher (UX, Ethnographer) at San Francisco Bay Area
- Julian Hsu** (2nd) - Software Engineer at Google, Orange County, California Area
- Vikas Jha** (2nd) - CEO at Baniya & A
- Rob Lojek** (2nd) - Technology Director at Envy

# Get exploring

Get going at [www.linkedin.com/alumni](http://www.linkedin.com/alumni)

LinkedIn