

Introduction to *Schools by SES Distribution Data*

Why is the socioeconomic status (SES) make up of a school's student population important?

The Board of Education's goals for student assignment reference equitable access to quality schools and decreasing the number of schools with high concentrations of poor and high needs students.

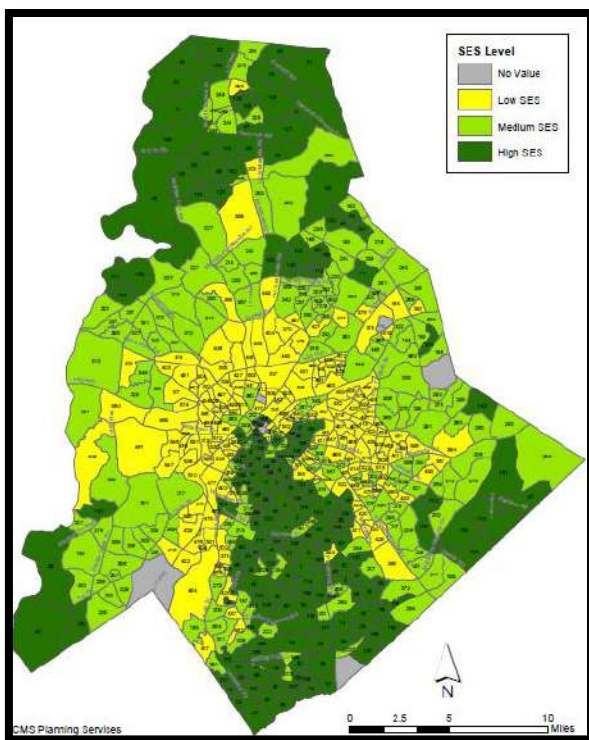
Factors such as family income, parental education attainment and English language ability can, together, influence learning environments. Individual student capacity and potential for learning is *not* correlated to socioeconomic status, but rather there are group effects when large concentrations of students who share similar socioeconomic factors learn together.

How does CMS define SES?

During the fall and winter of 2016, the CMS Board of Education identified a number of social and economic factors that, together, may influence the learning environment. Data associated with the identified factors is readily available from the United States Census (Census) and related American Community Survey (ACS).

The identified factors are:

- English Language Ability (i.e., whether or not English is "spoken" very well in the home)
- Family Composition (i.e., is the home a single or multi-parent home)
- Family Income
- Home Ownership
- Parental Education Attainment



There are 548 block groups, small geographic regions defined by the US Census Bureau, in Mecklenburg County with at least one CMS student resident. CMS assesses each block group relative to the others for each of the 5 identified SES factors. Block groups were then ranked 1 – 548 based on their average score, and divided into 3 equally sized groups.

Blocks 1 – 182 are designated "high SES" and associated with higher incomes and educational attainment, lower incidences of English "not spoken very well" in the home and single parent households, and higher instances of home ownership; these are factors associated with educational advantages.

Blocks 183 – 367 are designated "medium SES" and blocks 368 – 548 are designated "low SES."

It is important to note that these designations are not absolute. That is, CMS did not set an income or education level below which a block group is considered "low SES" and above which it is

considered "medium" or "high SES." Rather, the designations are relative. That is, CMS assessed each block group *relative* to the all the others.

How is SES distribution for a given school calculated?

Each CMS student's home address is geocoded to one of the identified 548 block groups in Mecklenburg County, and each of those block groups has a designation as either high, medium or low SES.

Looking at all the addresses assigned to a given school, and all the block groups associated with those addresses, CMS is able to determine the SES distribution of a school's attending population.

Are there limitations to the SES data?

There are a few limitations to the data. And while the limitations are minor and do not mean the data is not useful for CMS' purposes, it is important to acknowledge them.

The data is specific to the block group medians for each of the factors. It would certainly be more accurate if CMS was able to assess each of the five SES factors for individual student households. Barring the ability to do so, the median data available via the Census and ACS is the best proxy.

The most recent ACS data was released in 2015. And while two years is well within the acceptable range for using the data, it is worth noting that changes in some Mecklenburg County communities may not be reflected in the data.

All Schools by SES Level 2016, Attending School

Schools	Low SES		Medium SES		High SES		Total	Total Pct
	Students	Pct	Students	Pct	Students	Pct	Students	
Alexander Graham MS	273	19.21%	205	14.43%	943	66.36%	1421	100.00%
Audrey Kell HS	10	0.33%	142	4.75%	2835	94.91%	2987	100.00%
Albemarle Road ES	732	64.32%	406	35.68%		0.00%	1138	100.00%
Albemarle Road MS	782	67.07%	383	32.85%	1	0.09%	1166	100.00%
Alexander MS	45	6.02%	378	50.53%	325	43.45%	748	100.00%
Allenbrook ES	556	98.23%	9	1.59%	1	0.18%	566	100.00%
Ashley Park ES	503	89.34%	58	10.30%	2	0.36%	563	100.00%
Bailey Road MS	154	9.17%	418	24.88%	1108	65.95%	1680	100.00%
Bain ES	13	1.41%	422	45.92%	484	52.67%	919	100.00%
Ballantyne ES	1	0.12%	100	11.53%	766	88.35%	867	100.00%
Barnette ES	16	2.24%	184	25.73%	515	72.03%	715	100.00%
Barringer ES	337	58.30%	74	12.80%	167	28.89%	578	100.00%
Phillip O. Berry	790	50.51%	678	43.35%	96	6.14%	1564	100.00%
Berryhill ES	549	77.54%	155	21.89%	4	0.56%	708	100.00%
Berewick ES	23	3.28%	455	64.81%	224	31.91%	702	100.00%
Beverly Woods ES	16	2.09%	151	19.71%	599	78.20%	766	100.00%
Billingsville ES	327	96.46%	11	3.24%	1	0.29%	339	100.00%
Blythe ES	247	22.98%	653	60.74%	175	16.28%	1075	100.00%
Bradley MS	110	10.30%	427	39.98%	531	49.72%	1068	100.00%
Briarwood ES	721	98.90%	8	1.10%		0.00%	729	100.00%
Bruns	641	90.79%	64	9.07%	1	0.14%	706	100.00%
Butler HS	405	19.04%	1353	63.61%	369	17.35%	2127	100.00%
Walter G. Byers	464	98.10%	9	1.90%		0.00%	473	100.00%
Carmel MS	329	30.13%	130	11.90%	633	57.97%	1092	100.00%
Cato Middle College	46	18.93%	144	59.26%	53	21.81%	243	100.00%
Chantilly Montessori	59	21.69%	117	43.01%	96	35.29%	272	100.00%
Clear Creek ES	12	2.18%	391	71.09%	147	26.73%	550	100.00%
Cochrane	766	94.33%	43	5.30%	3	0.37%	812	100.00%
Collinswood	283	36.95%	303	39.56%	180	23.50%	766	100.00%
Community House MS		0.00%	190	10.67%	1591	89.33%	1781	100.00%
Cornelius ES	132	21.39%	160	25.93%	325	52.67%	617	100.00%
Cotswold ES	204	24.85%	153	18.64%	464	56.52%	821	100.00%
Coulwood	68	10.43%	568	87.12%	16	2.45%	652	100.00%
Crestdale MS	104	13.33%	221	28.33%	455	58.33%	780	100.00%
Crown Point ES	218	31.19%	461	65.95%	20	2.86%	699	100.00%
Croft ES	21	3.63%	154	26.64%	403	69.72%	578	100.00%
David Cox Road ES	14	2.31%	554	91.57%	37	6.12%	605	100.00%
Davidson ES	2	0.29%	155	22.14%	543	77.57%	700	100.00%
Devonshire ES	623	99.84%	1	0.16%		0.00%	624	100.00%
Dilworth ES	117	16.12%	61	8.40%	548	75.48%	726	100.00%
Druid Hills	559	98.42%	7	1.23%	2	0.35%	568	100.00%
Early College	90	33.09%	135	49.63%	47	17.28%	272	100.00%
Eastover ES	88	20.37%	82	18.98%	262	60.65%	432	100.00%
Eastway MS	854	93.85%	52	5.71%	4	0.44%	910	100.00%
eLearning	34	20.00%	65	38.24%	71	41.76%	170	100.00%
Elizabeth Traditional ES	212	39.77%	247	46.34%	74	13.88%	533	100.00%
Elizabeth Lane ES	3	0.28%	478	44.84%	585	54.88%	1066	100.00%
Elon Park ES	5	0.45%	9	0.80%	1108	98.75%	1122	100.00%
East Meck HS	1166	61.21%	413	21.68%	326	17.11%	1905	100.00%
Endhaven ES	83	11.62%	137	19.19%	494	69.19%	714	100.00%

All Schools by SES Level 2016, Attending School

Schools	Low SES		Medium SES		High SES		Total	Total Pct
	Students	Pct	Students	Pct	Students	Pct	Students	
First Ward Creative Arts	366	64.78%	181	32.04%	18	3.19%	565	100.00%
Garinger HS	1906	94.87%	95	4.73%	8	0.40%	2009	100.00%
Grand Oaks ES	7	1.18%	25	4.20%	563	94.62%	595	100.00%
Greenway Park ES	458	81.93%	71	12.70%	30	5.37%	559	100.00%
JH Gunn ES	620	81.47%	136	17.87%	5	0.66%	761	100.00%
Huntingtowne Farms ES	646	80.85%	108	13.52%	45	5.63%	799	100.00%
Hornets Nest ES	143	22.14%	503	77.86%		0.00%	646	100.00%
Harding HS	1595	94.66%	80	4.75%	10	0.59%	1685	100.00%
Harper Middle College	24	22.64%	46	43.40%	36	33.96%	106	100.00%
Hawthorne	86	47.78%	81	45.00%	13	7.22%	180	100.00%
Hickory Grove ES	596	92.55%	48	7.45%		0.00%	644	100.00%
Highland Mill Montessori	66	29.20%	129	57.08%	31	13.72%	226	100.00%
Highland Creek ES	13	2.05%	284	44.87%	336	53.08%	633	100.00%
Hidden Valley ES	971	96.91%	25	2.50%	6	0.60%	1002	100.00%
Highland Ren. ES	426	85.37%	72	14.43%	1	0.20%	499	100.00%
Hawk Ridge ES	2	0.22%	86	9.47%	820	90.31%	908	100.00%
Huntersville ES	183	22.54%	115	14.16%	514	63.30%	812	100.00%
Hopewell HS	219	13.10%	961	57.48%	492	29.43%	1672	100.00%
Idlewild ES	715	72.37%	253	25.61%	20	2.02%	988	100.00%
Independence HS	833	33.63%	1172	47.32%	472	19.06%	2477	100.00%
Irwin	88	18.11%	234	48.15%	164	33.74%	486	100.00%
JW Grier ES	260	33.29%	521	66.71%		0.00%	781	100.00%
Kennedy MS	44	4.83%	746	81.89%	121	13.28%	911	100.00%
Lansdowne ES	248	44.05%	117	20.78%	198	35.17%	563	100.00%
Lawrence Orr ES	711	98.89%	6	0.83%	2	0.28%	719	100.00%
Lebanon Road ES	374	48.76%	355	46.28%	38	4.95%	767	100.00%
Levine Middle College	27	11.02%	100	40.82%	118	48.16%	245	100.00%
Long Creek ES	32	6.87%	432	92.70%	2	0.43%	466	100.00%
Lake Wylie ES	16	2.37%	658	97.48%	1	0.15%	675	100.00%
Lincoln Heights ES	63	64.95%	29	29.90%	5	5.15%	97	100.00%
Marie G. Davis	444	65.01%	225	32.94%	14	2.05%	683	100.00%
Merry Oaks ES	628	94.15%	38	5.70%	1	0.15%	667	100.00%
Mallard Creek ES	47	7.11%	459	69.44%	155	23.45%	661	100.00%
James Martin MS	532	51.70%	475	46.16%	22	2.14%	1029	100.00%
Matthews ES	181	19.91%	389	42.79%	339	37.29%	909	100.00%
Mallard Creek HS	37	1.46%	1734	68.65%	755	29.89%	2526	100.00%
McAlpine ES	14	2.93%	175	36.61%	289	60.46%	478	100.00%
McClintock ES	734	71.12%	185	17.93%	113	10.95%	1032	100.00%
McKee Road ES	8	1.57%	72	14.15%	429	84.28%	509	100.00%
Metro	98	43.75%	93	41.52%	33	14.73%	224	100.00%
Martin Luther King MS	802	82.51%	167	17.18%	3	0.31%	972	100.00%
Mint Hill MS	127	10.63%	770	64.44%	298	24.94%	1195	100.00%
Monclair ES	414	93.24%	30	6.76%		0.00%	444	100.00%
Morehead STEM	337	31.82%	637	60.15%	85	8.03%	1059	100.00%
Myers Park HS	620	20.65%	380	12.65%	2003	66.70%	3003	100.00%
Myers Park Traditional	269	38.65%	223	32.04%	204	29.31%	696	100.00%
Mountain Island Lake Accad	30	3.30%	535	58.86%	344	37.84%	909	100.00%
Nations Ford ES	780	98.73%	9	1.14%	1	0.13%	790	100.00%
Nathaniel Alexander ES	530	64.24%	294	35.64%	1	0.12%	825	100.00%
Northeast MS	186	28.93%	380	59.10%	77	11.98%	643	100.00%

All Schools by SES Level 2016, Attending School

Schools	Low SES		Medium SES		High SES		Total	Total Pct
	Students	Pct	Students	Pct	Students	Pct	Students	
Newell ES	340	39.58%	514	59.84%	5	0.58%	859	100.00%
North Meck HS	836	38.40%	886	40.70%	455	20.90%	2177	100.00%
Northridge MS	132	19.13%	556	80.58%	2	0.29%	690	100.00%
Northwest School of the Arts	320	30.80%	451	43.41%	268	25.79%	1039	100.00%
Oakdale ES	339	50.00%	339	50.00%		0.00%	678	100.00%
Oakhurst ES	378	61.07%	219	35.38%	22	3.55%	619	100.00%
Oaklawn	275	49.91%	237	43.01%	39	7.08%	551	100.00%
Olympic HS	102	4.02%	2059	81.09%	378	14.89%	2539	100.00%
Olde Providence ES	7	0.97%	43	5.94%	674	93.09%	724	100.00%
Palisades Park ES	9	1.09%	550	66.59%	267	32.32%	826	100.00%
Park Road Montessori	43	10.00%	134	31.16%	253	58.84%	430	100.00%
Paw Creek ES	23	4.20%	522	95.43%	2	0.37%	547	100.00%
Piedmont IB MS	290	26.78%	518	47.83%	275	25.39%	1083	100.00%
Pineville ES	276	34.37%	487	60.65%	40	4.98%	803	100.00%
Pinewood	394	80.90%	63	12.94%	30	6.16%	487	100.00%
Pineygrove ES	234	29.03%	572	70.97%		0.00%	806	100.00%
Parkside ES	5	1.26%	206	52.02%	185	46.72%	396	100.00%
PLC	117	52.23%	79	35.27%	28	12.50%	224	100.00%
Polo Ridge ES		0.00%	6	0.59%	1007	99.41%	1013	100.00%
Providence Spring ES		0.00%	2	0.22%	924	99.78%	926	100.00%
Providence HS	11	0.54%	472	23.13%	1558	76.34%	2041	100.00%
Quail Hollow MS	465	50.99%	370	40.57%	77	8.44%	912	100.00%
Rama Road MS	426	69.27%	27	4.39%	162	26.34%	615	100.00%
Randolph IB	374	32.61%	352	30.69%	421	36.70%	1147	100.00%
Ranson MS	581	60.33%	378	39.25%	4	0.42%	963	100.00%
Reedy Creek ES	15	1.93%	754	97.16%	7	0.90%	776	100.00%
Reid Park	886	99.22%	4	0.45%	3	0.34%	893	100.00%
Rivergate ES	4	0.50%	593	73.66%	208	25.84%	805	100.00%
Ridge Road MS	24	1.93%	861	69.16%	360	28.92%	1245	100.00%
River Oaks ES	8	1.37%	548	93.84%	28	4.79%	584	100.00%
JM Robinson MS	9	0.79%	39	3.43%	1090	95.78%	1138	100.00%
Rocky River HS	492	30.81%	1047	65.56%	58	3.63%	1597	100.00%
South Charlotte MS	3	0.34%	361	41.16%	513	58.49%	877	100.00%
Sedgefield ES	292	75.06%	64	16.45%	33	8.48%	389	100.00%
Sedgefield MS	599	77.49%	117	15.14%	57	7.37%	773	100.00%
Selwyn ES	63	7.30%	126	14.60%	674	78.10%	863	100.00%
Shamrock Gardens ES	355	71.86%	45	9.11%	94	19.03%	494	100.00%
Sharon ES	5	0.60%	155	18.56%	675	80.84%	835	100.00%
Smithfield ES	177	27.40%	315	48.76%	154	23.84%	646	100.00%
South Meck HS	1069	35.14%	1128	37.08%	845	27.78%	3042	100.00%
Southwest MS	317	22.97%	865	62.68%	198	14.35%	1380	100.00%
Starmount ES	442	97.36%	12	2.64%		0.00%	454	100.00%
Statesville Road ES	534	94.85%	29	5.15%		0.00%	563	100.00%
Sterling ES	516	79.38%	134	20.62%		0.00%	650	100.00%
Steele Creek ES	114	14.43%	675	85.44%	1	0.13%	790	100.00%
Stoney Creek ES	193	25.56%	562	74.44%		0.00%	755	100.00%
Thomasboro ES	681	97.29%	19	2.71%		0.00%	700	100.00%
Torrence Creek ES	14	2.39%	163	27.77%	410	69.85%	587	100.00%
Trillium Springs ES	11	8.59%	77	60.16%	40	31.25%	128	100.00%
Tuckaseegee ES	447	58.43%	315	41.18%	3	0.39%	765	100.00%

All Schools by SES Level 2016, Attending School

Schools	Low SES		Medium SES		High SES		Total	Total Pct
	Students	Pct	Students	Pct	Students	Pct	Students	
Turning Point	191	67.02%	77	27.02%	17	5.96%	285	100.00%
University Park ES	318	64.11%	164	33.06%	14	2.82%	496	100.00%
University Meadows ES	146	22.02%	461	69.53%	56	8.45%	663	100.00%
Vance HS	828	49.05%	815	48.28%	45	2.67%	1688	100.00%
Westerly Hills	535	99.07%	4	0.74%	1	0.19%	540	100.00%
EE Waddell HS	287	20.90%	542	39.48%	544	39.62%	1373	100.00%
JV Washam ES	9	0.89%	444	43.70%	563	55.41%	1016	100.00%
West Charlotte HS	1442	93.45%	95	6.16%	6	0.39%	1543	100.00%
WA Hough HS	165	6.38%	561	21.69%	1861	71.94%	2587	100.00%
Whitewater MS	507	60.36%	330	39.29%	3	0.36%	840	100.00%
Winget Park ES	7	1.53%	408	89.08%	43	9.39%	458	100.00%
Windsor Park ES	747	98.68%	9	1.19%	1	0.13%	757	100.00%
Winterfield ES	662	97.93%	14	2.07%		0.00%	676	100.00%
West Meck HS	671	37.15%	1116	61.79%	19	1.05%	1806	100.00%
Winding Springs ES	651	74.23%	220	25.09%	6	0.68%	877	100.00%
Whitewater ES	291	37.07%	493	62.80%	1	0.13%	785	100.00%
Grand Total	53067	35.96%	51916	35.18%	42576	28.85%	147559	100.00%