

Jeopardy

Geography 1

Geography 2

Resources 1

R vs N-R

Extras

\$100

\$100

\$100

\$100

\$100

\$200

\$200

\$200

\$200

\$200

\$300

\$300

\$300

\$300

\$300

\$400

\$400

\$400

\$400

\$400

\$500

\$500

\$500

\$500

\$500

Final Jeopardy

1 - \$100

- Bits of very fertile rock and dirt on river bottoms that when washed up on shore create fantastic growing conditions

- SILT



1 - \$200

When fertile soil becomes unusable due to over grazing by livestock or by deforestation

DESERTIFICATION



1 - \$300

Many plants can grow in soil that is...

FERTILE



1 - \$400

The Congo, Zambezi, and Niger are all what?

RIVERS



1 - \$500

Location to the equator, elevation, and relationship to large bodies of water are all factors of Africa's what?

CLIMATE



2 - \$100

What do people need to find in the desert for water?

OASIS



2 - \$200

Why is it impossible for ships from landlocked countries to use rivers to sail from Africa's interior to the sea?

CATARACTS



2 - \$300

This landform extends across most of North Africa.

SAHARA DESERT



2 - \$400

Two of Africa's largest rivers are the Nile and Niger. Name two more.

CONGO AND ZAMBEZI



2 - \$500

This is a giant lake in the region of central Africa.

LAKE VICTORIA



3 - \$100

All the things people do to make a living is called what?

ECONOMY



3 - \$200

To add variety to an economy.

DIVERSIFY



3 - \$300

Even though Africa has a variety of natural resources that are acquired through agriculture and mining, a major part of Africa's economy relies on....

MANUFACTURING



3 - \$400

What strategy will help protect workers against economic hardships; such as, drought or mines collapsing?

DIVERSIFICATION



3 - \$500

If a group of people are nomadic, what does it mean?

They move from place to place in search of food.



4 - \$100

Coal

NON-RENEWABLE



4 - \$200

Timber

RENEWABLE



4 - \$300

Sunlight

RENEWABLE



4 - \$400

Crude Oil

NON-RENEWABLE



4 - \$500

Leather

RENEWABLE



5 - \$100

The highest mountain in Africa is named what?

MOUNT KILIMANJARO



5 - \$200

Climate is the average weather of a place over a long period of time. What do we call everything that grows naturally in a certain place?

VEGETATION

Climate basically determines what the vegetation of an area is.



5 - \$300

What is it called when crops are watered artificially?

IRRIGATION



5 - \$400

What type of industry relies only on resources grown in the earth?

AGRICULTURE



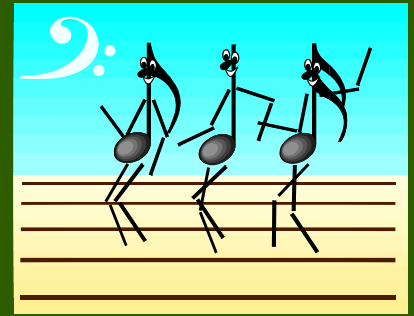
5 - \$500

A crop that is grown so it can be sold.

CASH CROP



Final Jeopardy



The current amount of countries in Africa is...

54

