

What do you want to do after
you graduate from high school?



Do you want to:

- Go to college?
- Go to BOCES?
- Learn a trade?
- Go to work?

ACCES-VR can help you



What is ACCES-VR?

Adult

Career

Continuing

Education

Services

Vocational **R**ehabilitation

What does ACCES-VR do?

Provides individualized services to eligible individuals with disabilities to reach an agreed upon an employment goal.

ACCES-VR is all About going to Work



Eligibility

- You are interested in services leading to employment
- You have a disability and that disability leaves you with limitations affecting potential employment
- It is determined that you can work in today's job market
- Your disability does not prevent your participation in services
- You need to have the legal right to work in the United States

What is a disability?

- Difficulty learning
 - Difficulty walking
 - Difficulty lifting
 - Difficulty coping
 - Difficulty working with others
 - Difficulty concentrating
 - Ongoing medical problems
- These MAY be a disability



Which Students May Be Eligible?

- Many students with an IEP
- Many students with a 504 plan
- Non-classified students with disabilities

If you are eligible, ACCES-VR's vocational rehabilitation program can help you to:

- Plan for your career
- Obtain job coaching
- Get training to achieve your work goals
- Find a job that matches your abilities, interests and needs, and
- Work with your employer or college to make sure you receive reasonable accommodations when you need them

Why should I be thinking about this while I am still at school?



Now is when you should start planning what you will do after you finish high school. You have time to learn about different career choices. Decisions you make now will affect how well prepared you will be when you leave school.

How can a ACCES-VR Counselor help me?

- Give you information about careers and job opportunities to help you decide on a job goal.
- Suggest ways to find out about your abilities, interests, and needs for help.
- Help you choose a work goal that fits your choices, needs and abilities.
- Help you find a job and follow up to make sure it is the right job for you.
- Tell you who to talk to when you have questions about financial aid, work benefits or other concerns.



How is your job goal developed?

- We will work together to come up with a “game plan” for a successful career.
- This goal needs to involve your strengths and other issues (job market, location, transportation...)
- Our job is to help you go in a direction so you can get a job.

Who's on My Career team?

- You!
- Vocational Rehabilitation Counselor (That's ME!)
- high school staff
- Other people who know you best: Parents, guardians, other professionals you may work with.

Where would I have to go for the training I need to get a job?



Training Options

- Job training Programs
- College
- Supported Employment (job coach)



Job Training Programs

- BOCES training programs
- Private vocational school programs
- Certificate programs at community colleges

College

May include financial contribution toward:

- Tuition, fees, books, room and board
- Travel costs to and from school if no room and board
- Assistive technology
- ***You must apply for financial aid***

Supported Employment

- Job placement services through agencies on ACCES-VR contract for specific disability groups
- Intensive services
 - Situational assessment
 - Job development
 - Job coaching
- Extended services
 - Ongoing follow along services funded through OPWDD, OMH or ACCES-VR

Job Placement

- Assistance with choosing a job goal, developing a resume, interviewing skills, searching for a job
 - On-the-job Training
 - Work Tryouts
 - Occupational tools & equipment

Did you say help paying for College????



- Students must be enrolled in non-remedial accredited courses.
- They need to be accepted into a matriculated program – that will lead to a job which is in demand and available in this area or where they expect to reside.
- Students need to maintain a 2.0 GPA (or the college's academic standards) and send verification of grades, class schedule and costs for each semester.



Financial Limits for College



While we are NOT a money tree, we can provide funding toward tuition, fees, books and in some cases room and board, but only up to the SUNY/ CUNY rates. The following are our CURRENT funding maximums and are based per semester for full time study (12 credits or more and can be pro-rated for part time).

- Tuition - SUNY/CUNY rate per semester
- Fees - \$675 per semester/\$1350 per year
- Books - \$700 per semester/\$1400 per year
- Room and Board - \$1500 per semester/\$3000 per year

For some services, we need
to look at household
income. The counselor will
discuss this with you in
person.

So what do I do if I want to Apply

Tell a teacher, Guidance Counselor, Social Worker, some one you live with and they will help you get going with us. Or call yourself.



Then what?

- You will meet with someone and we will do some paperwork!
- We will get information about you from your school, your doctor, your therapist - whoever can tell us about your disability.
- We will then be able to find out if you are eligible for our services.

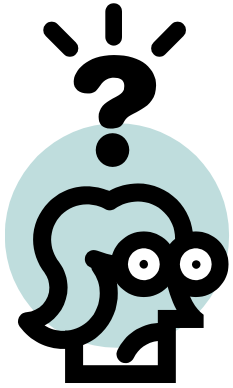


Remember our goal is **EMPLOYMENT**



ACCES-VR Process at a Glance





ANY QUESTIONS
NOW?



Who am I?

Elizabeth Levit

Vocational Rehabilitation Counselor

ACCES-VR

250 Veterans Highway

Hauppauge, NY 11788

(631) 952-6754

Elizabeth.levit@nysed.gov

GOOD LUCK!

We look
forward to
meeting
YOU!

