

# Abstraction Expressionism

**Abstract Expressionism** was an American post-World War II-Art Movement It was the first specifically American movement to achieve worldwide influence and put New York City at the center of the western art world, a role formerly filled by Paris.



[Jackson Pollock, \*No. 5, 1948\*](#). Such works employ random naturalistic methods, with deliberate and intelligent designs and expressions—such that the work is understood to be a *creation*, and not just an accident.

- Technically, an important predecessor to abstraction is surrealism, with its emphasis on spontaneous, automatic or subconscious creation. Jackson Pollock's dripping paint onto a canvas laid on the floor is a technique that has its roots in the work of Max Ernst, surrealism.

- The movement's name is derived from the combination of the emotional intensity and self-denial of the German Expressionists with the anti-figurative aesthetic of the European abstract schools such as Futurism, and Cubism.



[Hans Hofmann](#) *The Gate*, 1959–1960. Hofmann's presence in New York City and Provincetown as a teacher and as an artist was influential to the development of American painting in the 1930s and 1940s.



© MDE-ART.com



# Color Scheme Painting

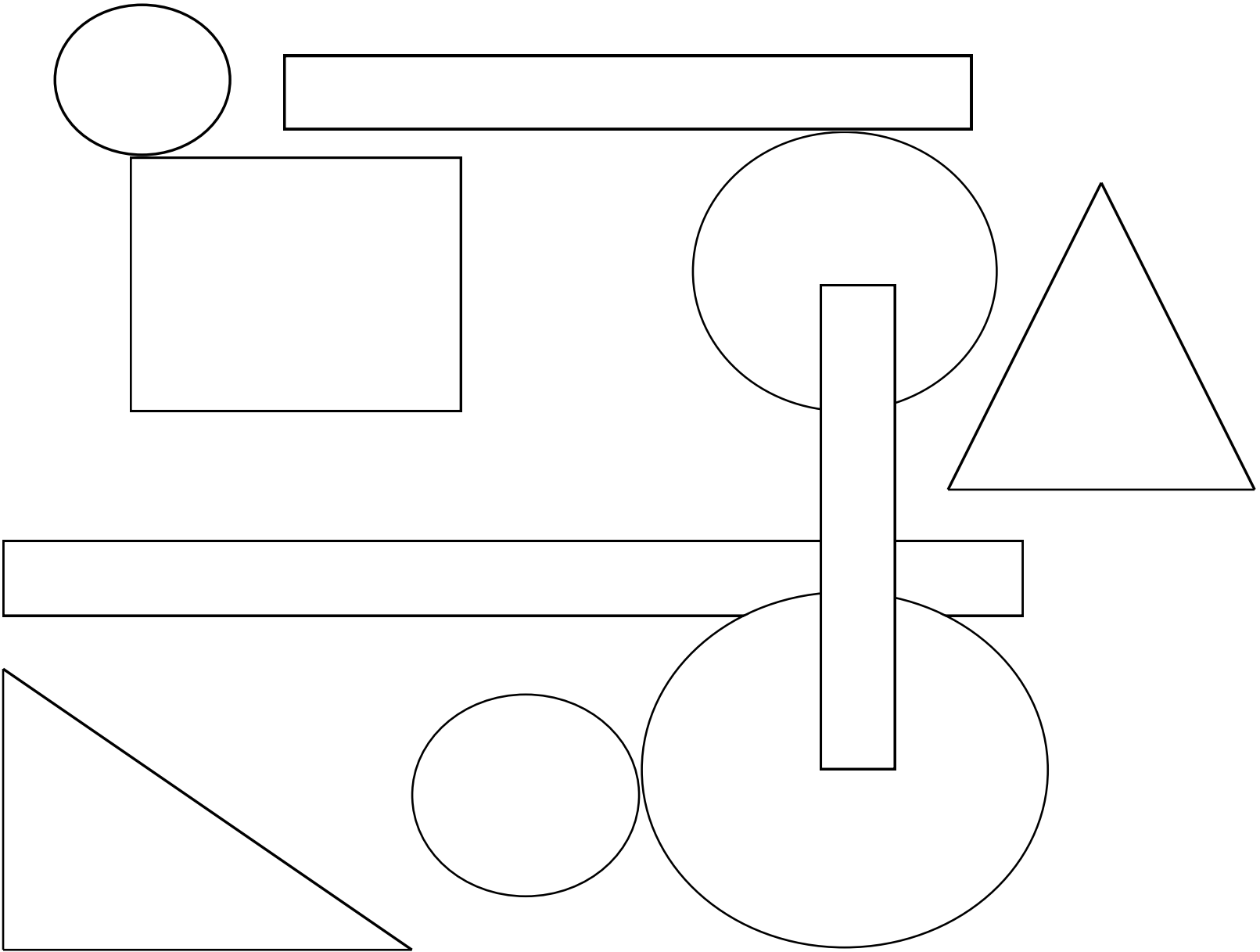
## Criteria

- **Shapes are all geometric**
- **Shapes are not too big or small**
- **Colors are blended**
- **Colors have highlights and shadows**
- **Each rectangle accurately uses the correct color scheme**



1. On a sheet of 12 x18 white paper, use your ruler and compass to draw geometric shapes. Follow the criteria below
  - a. Shapes must be geometric
  - b. Shapes must overlap
  - c. Shapes must run off page
  - d. Shapes must fill the positive space
  
2. Check to make sure your shapes are not Big, if they are divided them with another shape.
  
3. Check to make sure you do not have very Small shapes (smaller than a dime), if they are erase lines to open up space.

4. Divide paper using your ruler and pencil into 4 equal rectangles.
  
5. Paint each section with one of the following four color schemes
  - a. Monochromatic
  - b. Complementary
  - c. Analogous
  - d. Split Triad
  
6. Colors must be blended and use highlights and shadows to show dimension

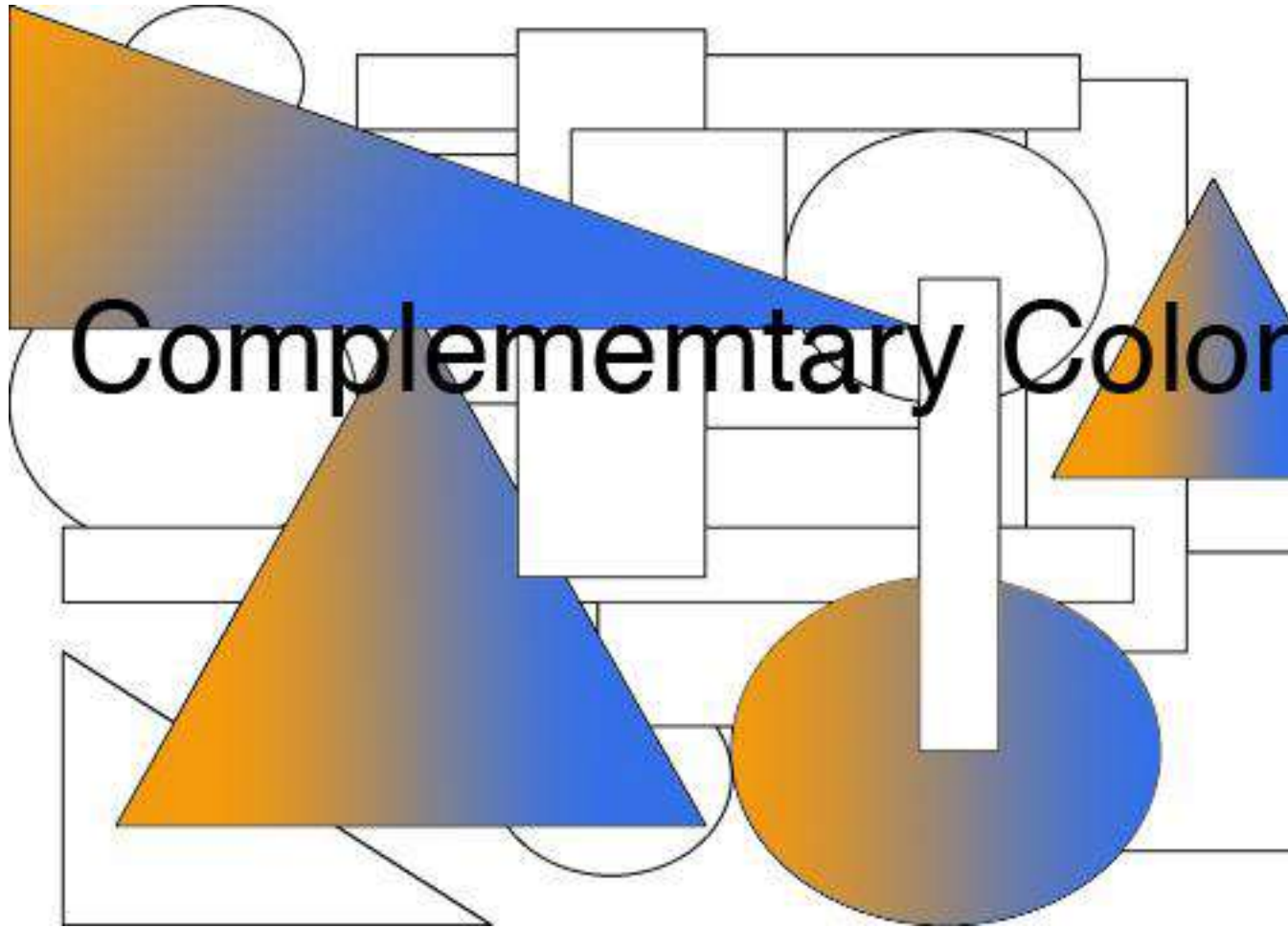


Start placing geometric shapes on your paper

An abstract geometric composition featuring various shapes in shades of green and black outlines. The shapes include a large green triangle on the left, a smaller green triangle below it, a vertical green bar in the center, and a green square on the right. The background is filled with overlapping black outlines of rectangles, circles, and triangles. The word "Monochromatic" is centered in the image.

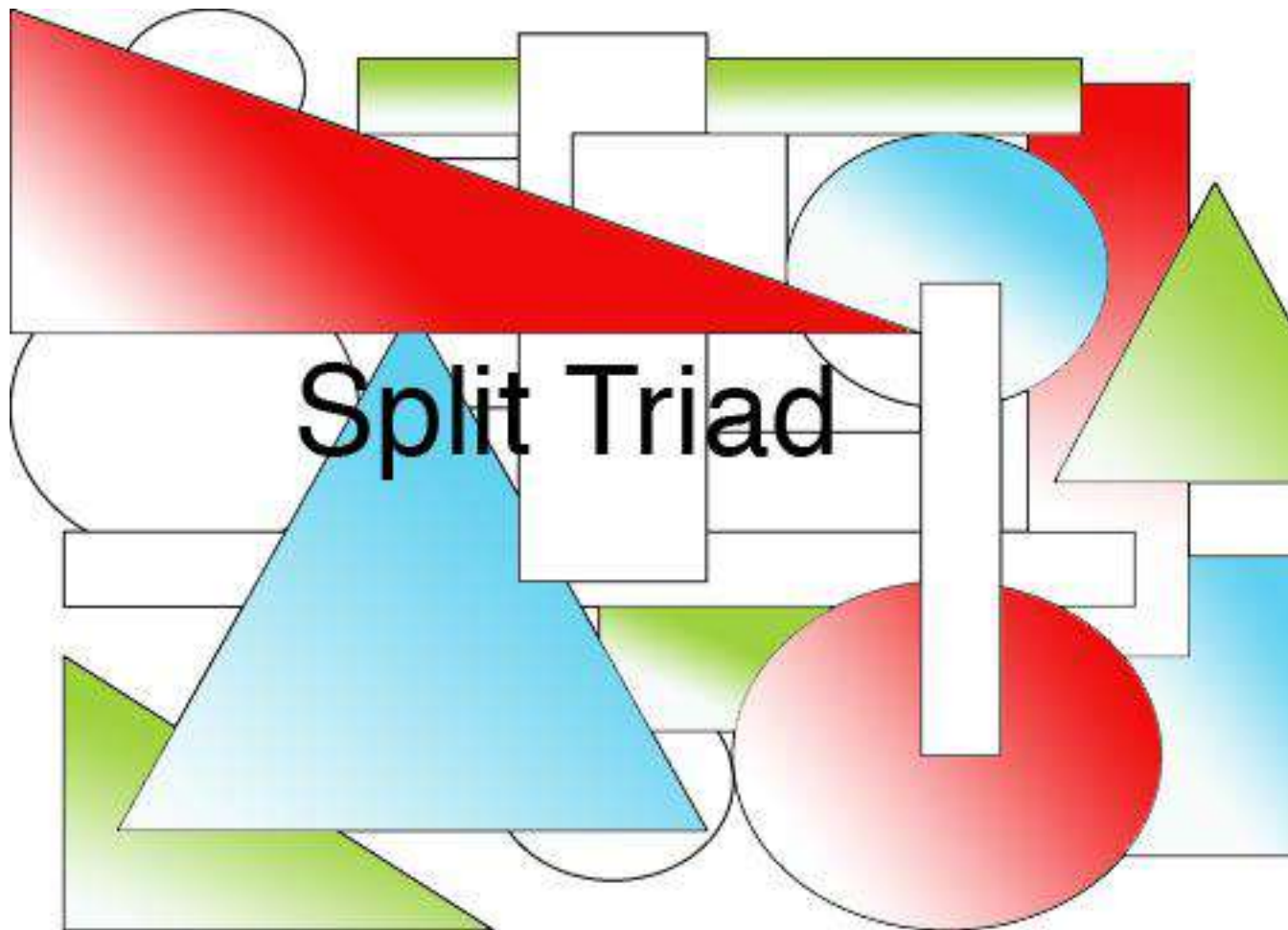
**Monochromatic**

# Complementary Color





Analogous

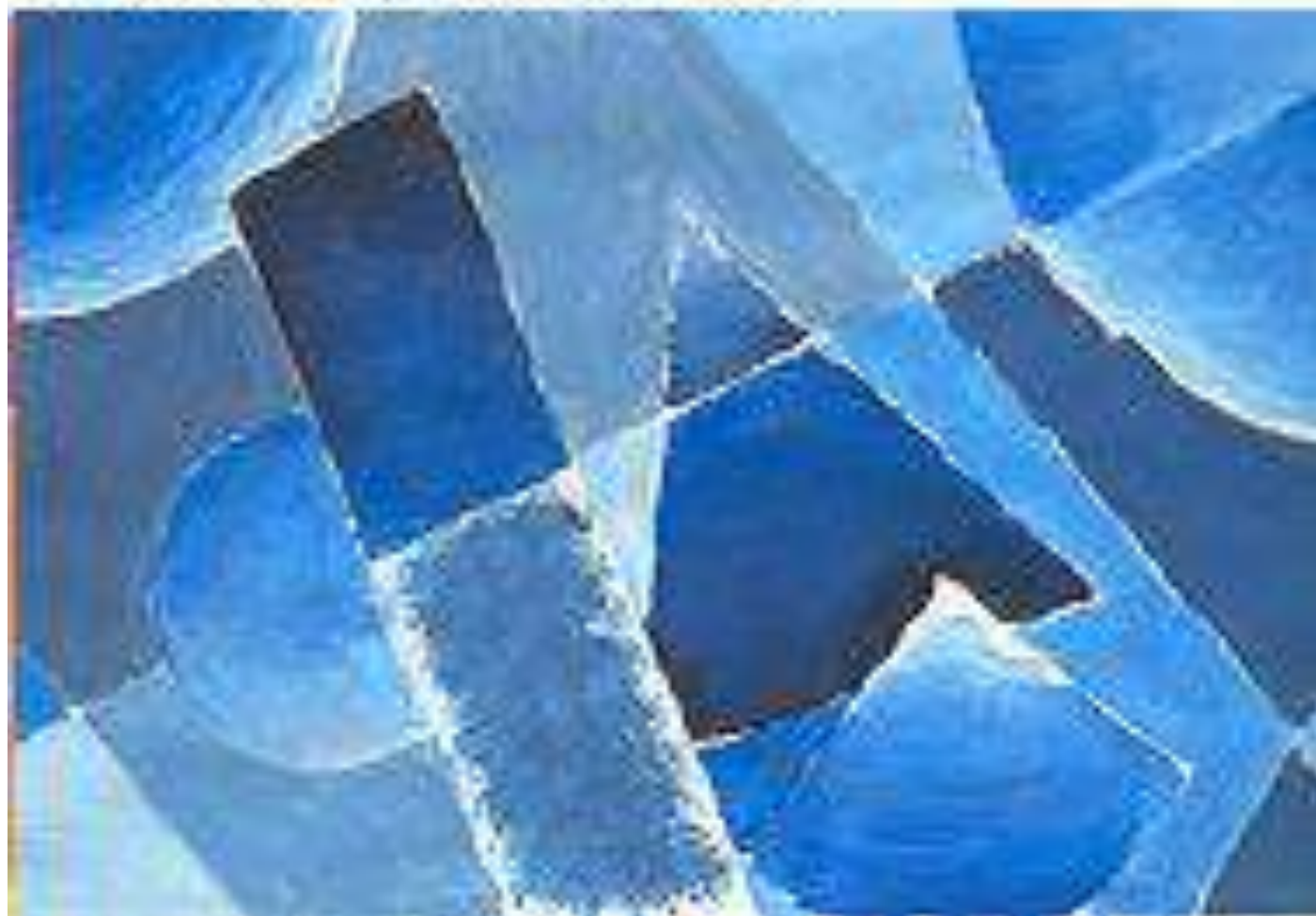


Split Triad





# Monochromatic





**Complementary**

# Analogous





**Split-Triad**

