

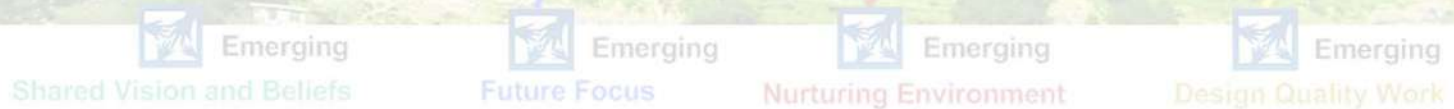


Energy  
Conservation  
Management  
Program

# *Keep Our Cash In The Classroom!*

## Annual Report Savings Year 2

**Kim Melander, CEM**  
**Presented to The Board of Trustees**  
**25 March 2013**



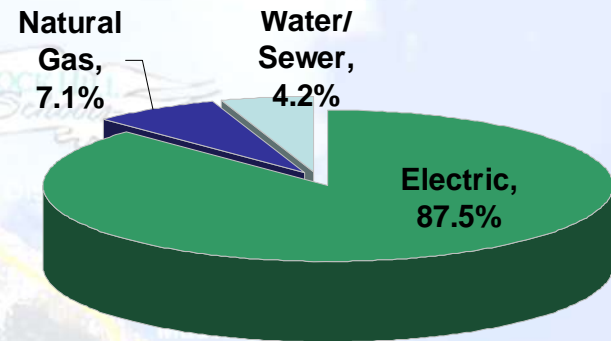


- Save Money We Can't Afford to Waste
- Save Our Teachers!

**“Bottom  
Line”  
Benefits:**

2009 EXPENDITURES  
for POWER, WATER,  
SEWER, NATURAL  
GAS:

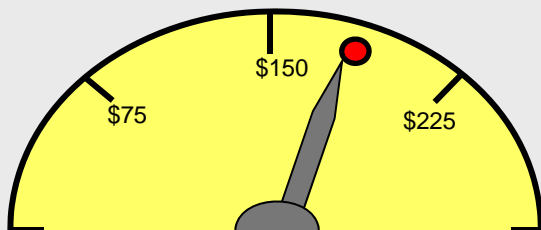
**\$4,327,836.72**



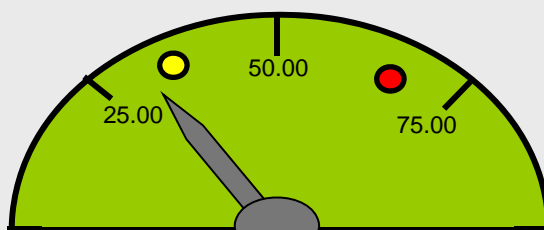
**299 Utility Bills / Month  
36 Schools, Centers & Sites**

- Save Resources – Our Planet!
- Teach Our Children To Conserve  
– For Their Future Success
- Teach Our Faculty and Community to  
Conserve, Save \$ At Home  
– For Rock Hill's Future Success

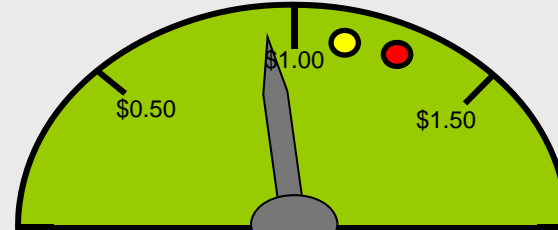




**\$180.69 / Student - Yr.**



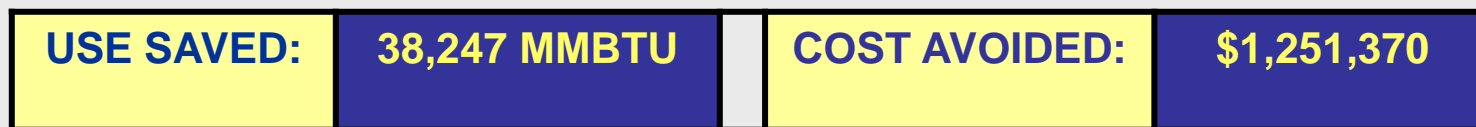
**29.98 kBtu / SF - Yr.**



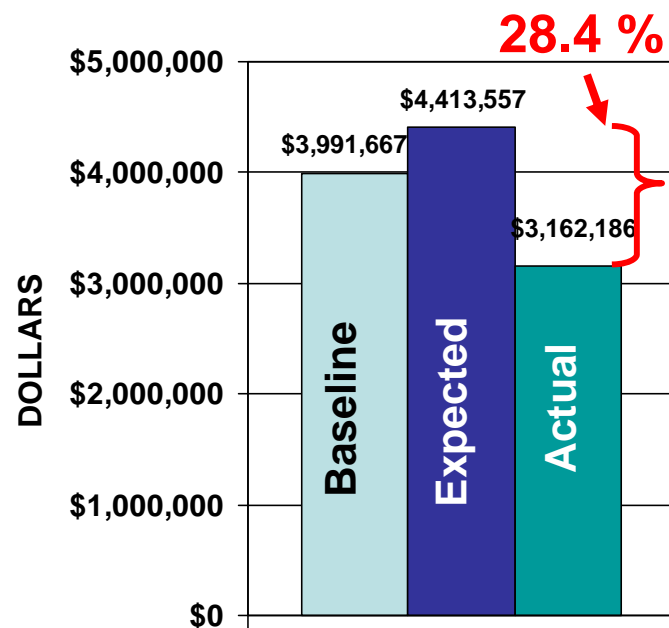
**\$0.93 / SF- Yr.**

● SC avg  
● US avg

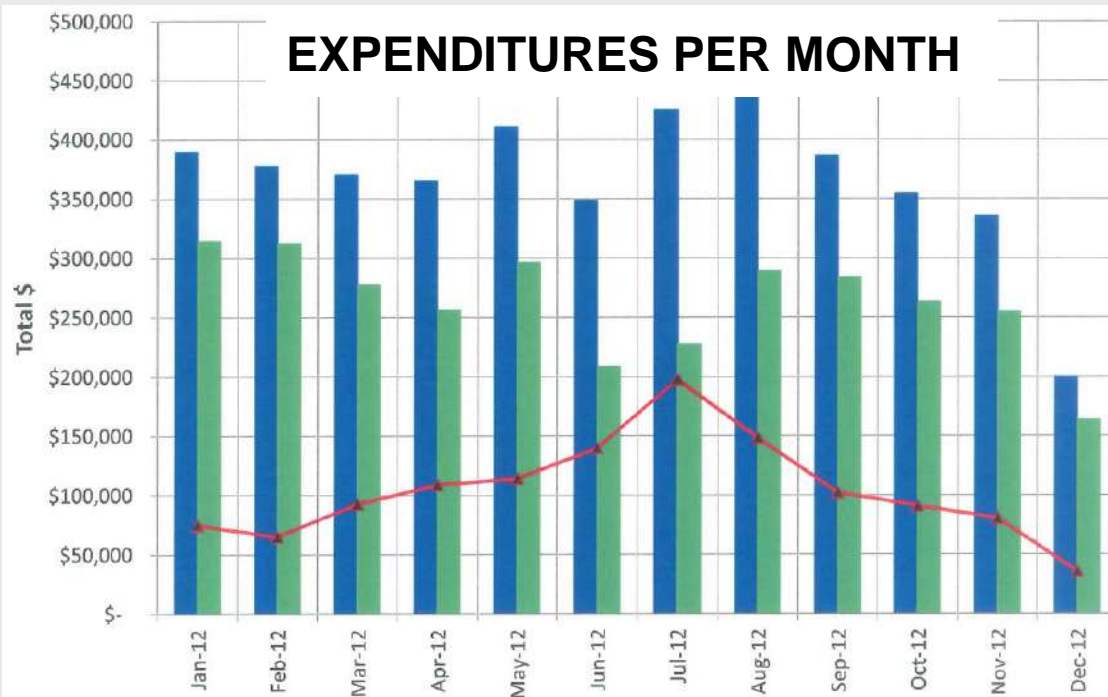
**SAVINGS PERIOD: JANUARY – DECEMBER 2012**



**BASE PERIOD: JANUARY – DECEMBER 2009**



**ELECTRICITY & NATURAL GAS**



## CARETAKERS: Energy Management



Top  
Energy  
Saving  
Schools!

SCHOOL	KWH's SAVED	NAT GAS THERMS SAVED	% USE SAVED	kBTU per SF	\$ COST AVOIDED	% COST AVOIDED
OAKDALE ELEM	241,620	ALL ELEC	38.6	22.60	\$45,912	48.1
RAWLINSON ROAD MIDDLE	786,782	4,572	40.8	30.1	\$101,186	42.1
CASTLE HEIGHTS MIDDLE	924,089	5,573	37.6	34.80	\$126,846	42.1
SOUTH POINTE HIGH	1,705,351	41,477	43.6	35.70	\$225,908	40.6



CHARLOTTE REGION CHAPTER  
BUILD GREEN. TEACH GREEN. LIVE GREEN.

Celebrating Green Growth In Our Region  
October 11th, 2012  
The Ritz-Carlton, Charlotte

GREEN 2012  
GALA  
& SUSTAINABLE BUSINESS AWARDS



FINALIST







### Program Goals & Initiatives

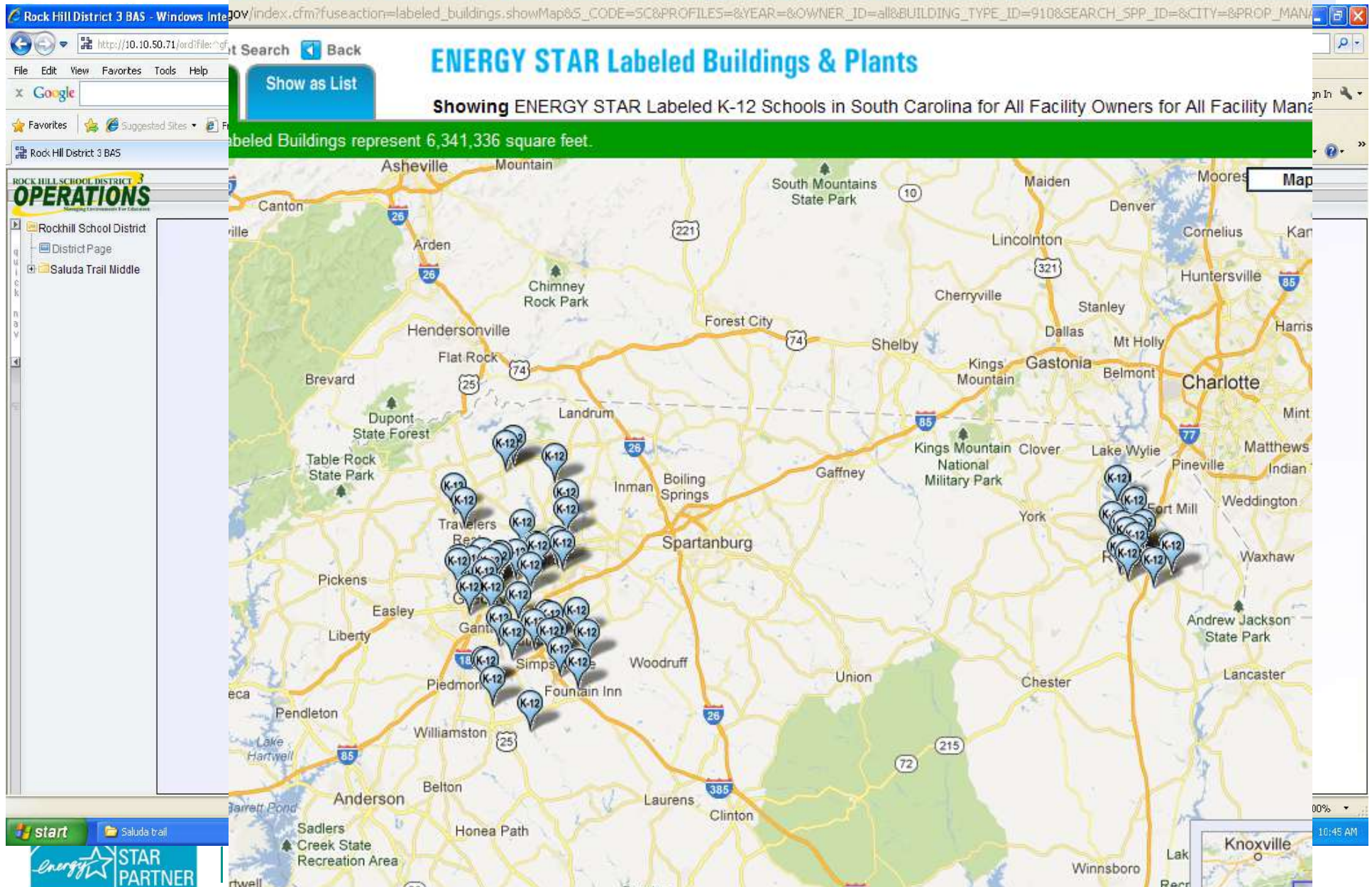
- **Enhanced energy conservation awareness**
  - Web page, newsletters, posters, decals
  - <http://www.rock-hill.k12.sc.us/departments/energy>
- **Demand Management**
  - Building Automation System adjustments
  - Alternative Rates – City Summer Load Shedding “Rider”
- **Improve classroom shutdown**
  - Contests will continue!
- **Building Automation System Enhancements:**
  - Verify real-time electrical monitoring data
  - add Natural Gas and Water consumption monitoring.
  - Active alarming operator notifications... Analytic algorithms
- **Energy Clubs in our schools!**
  - Challenge-Based Learning – Projects Guidance...





## CARETAKERS: Energy Management

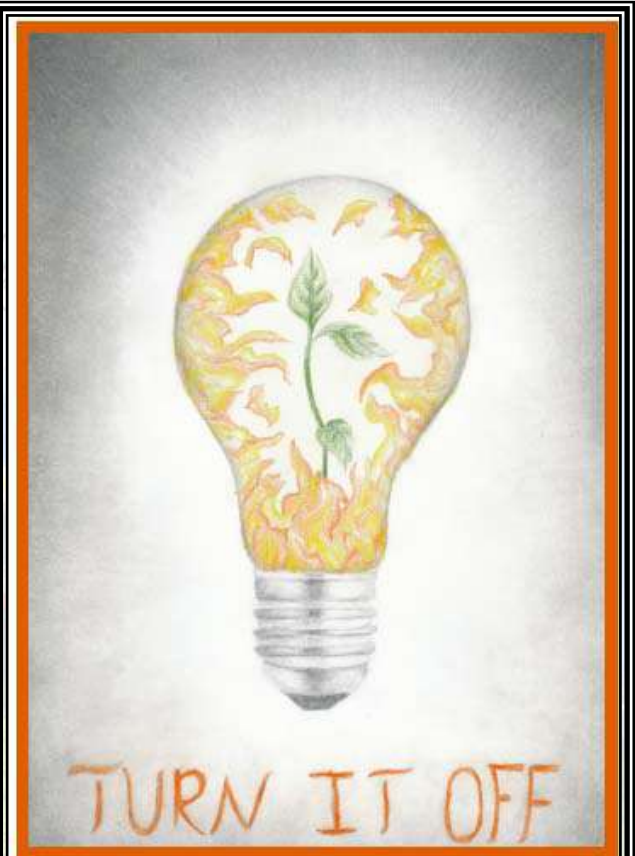
AR Labeled K-12 Schools in South Carolina for All Facility Owners for All Faci - Windows Internet Explorer





**QUESTIONS?**

**Thanks for  
your support!**



Artwork by Nicole Smith and Leslie Ortiz-Quiroz, Rock Hill High School

**DID YOU KNOW...**

- Over 75% of the time each week there is no one in this room?
- Leaving just the computers running during this time cost our district over \$425,000 per year?
- To shut down this room using this checklist takes less than 3 minutes?