

# The Urinary System

## FUNCTIONS:

Performs many functions that are important in maintaining homeostasis.

### 1. Maintain Fluids

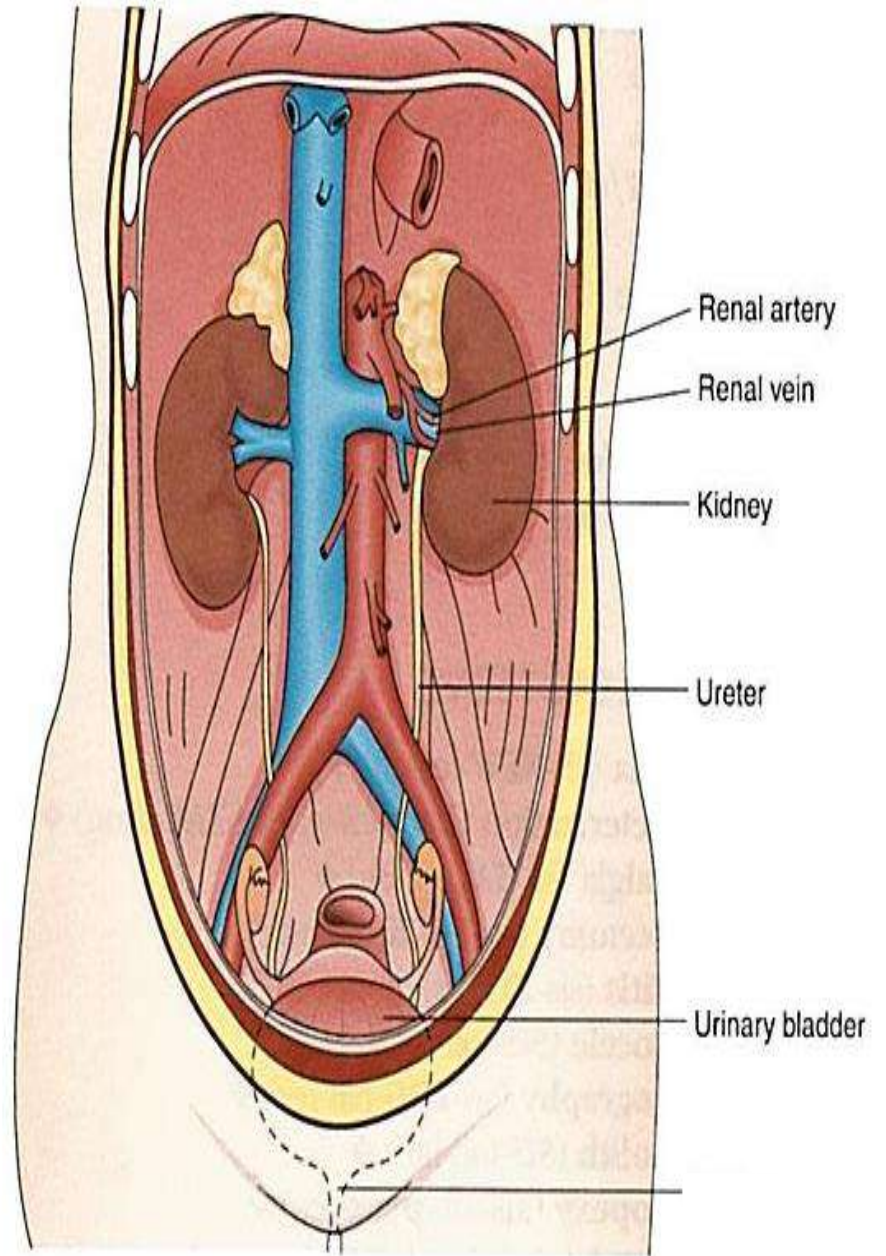
How:

### 2. Filter Blood

How:

### 3. Excrete Waste

How:



## **STRUCTURES:**

### **Homeostasis -**

<b>Structure</b>	<b>Function</b>
<b>KIDNEYS</b>	<b>What?</b> <b>Located where?</b> It has 2 layers which surround a <b>renal pelvis</b> : <ul style="list-style-type: none"><li>1. Outer=</li><li>2. Inner=</li></ul>
<b>WITHIN THE KIDNEYS:</b>	
<b>NEPHRON</b>	<b>What?</b> <b>Located where?</b>
<b>GLOMERULUS</b>	<b>What?</b> <b>Located where?</b>
<b>BOWMAN'S CAPSULE</b>	<b>What?</b> <b>Located where?</b>
<b>RENAL ARTERY &amp; VEIN</b>	<b>What?</b> <b>Located where?</b>

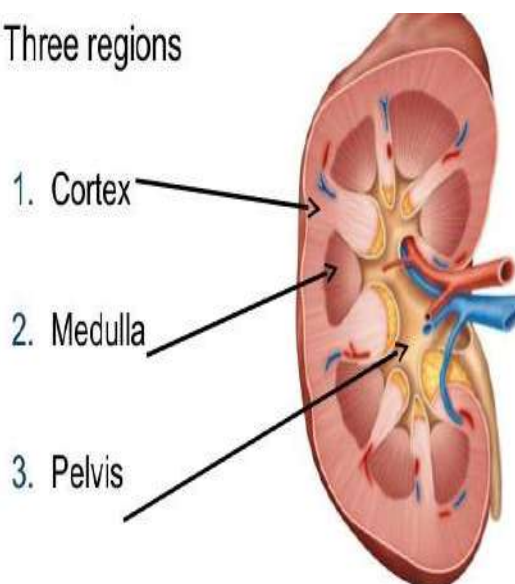
More Structures	
<b>URETER</b>	<p>What?</p> <p>Located where?</p>
<b>URINARY BLADDER</b>	<p>What?</p> <p>Located where?</p>
<b>URETHRA</b> Contains 2 urinary _____.	<p>What?</p> <p>Located where?</p>

**Urochrome –**

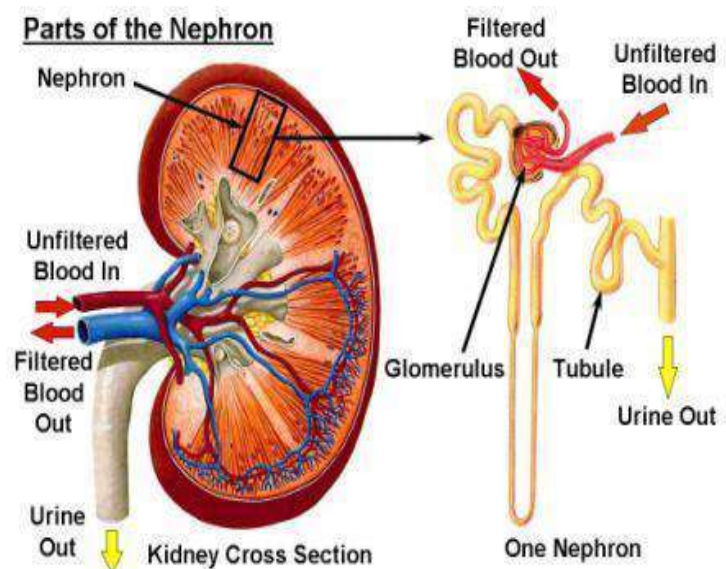
**Urea –**

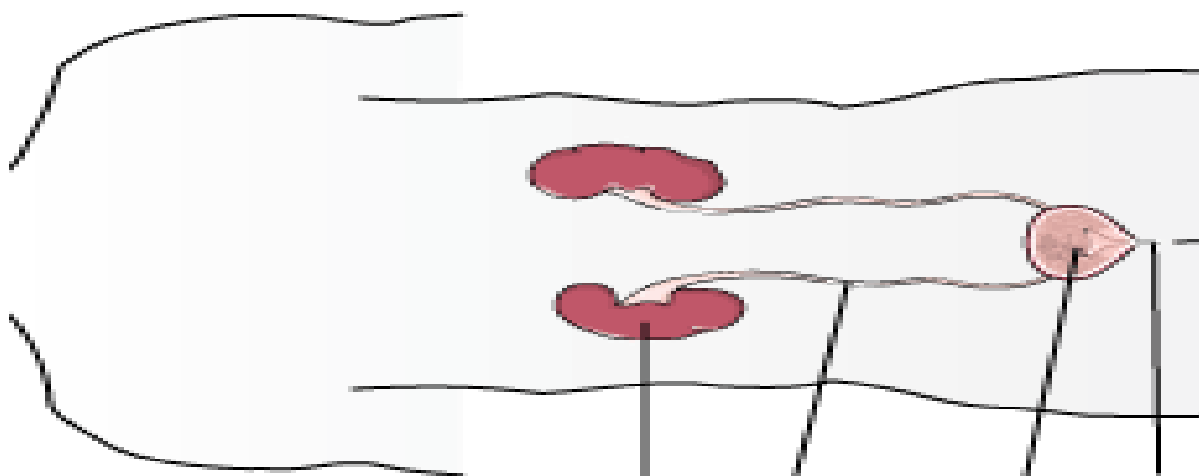
**Urinary Meatus –**

Three regions



Parts of the Nephron





Page 165 figure 9.4 will help you label this picture

### **THE EXCRETION OF URINE:**

As the bladder fills up, \_\_\_\_\_ is placed on the base of the urethra, resulting in the urge to \_\_\_\_\_ or \_\_\_\_\_. Also referred to as “void”.

- **Urination-**

**What is the last structure urine passes before leaving the body?**

#### **Medical Specialties:**

Nephrologist

Urologist