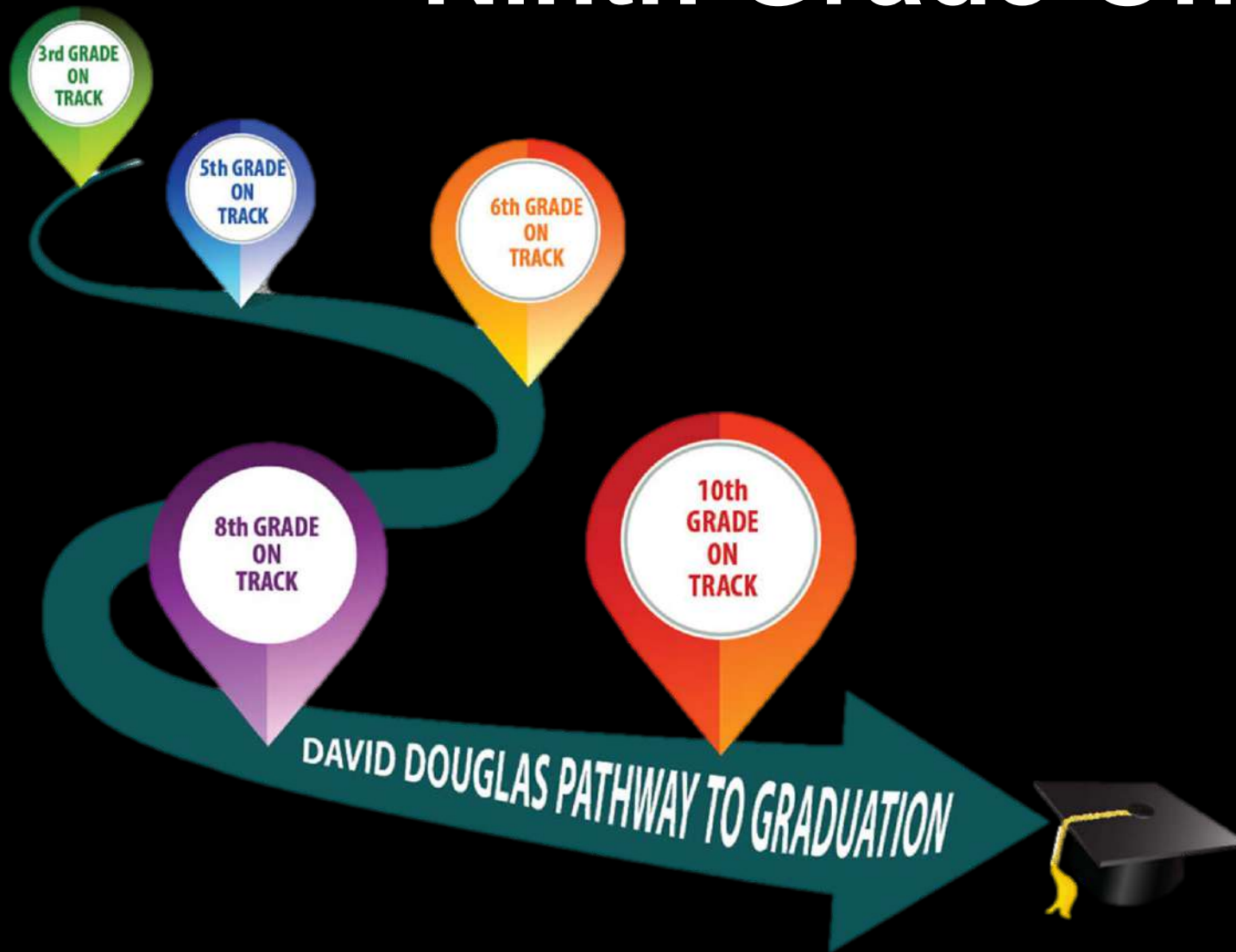
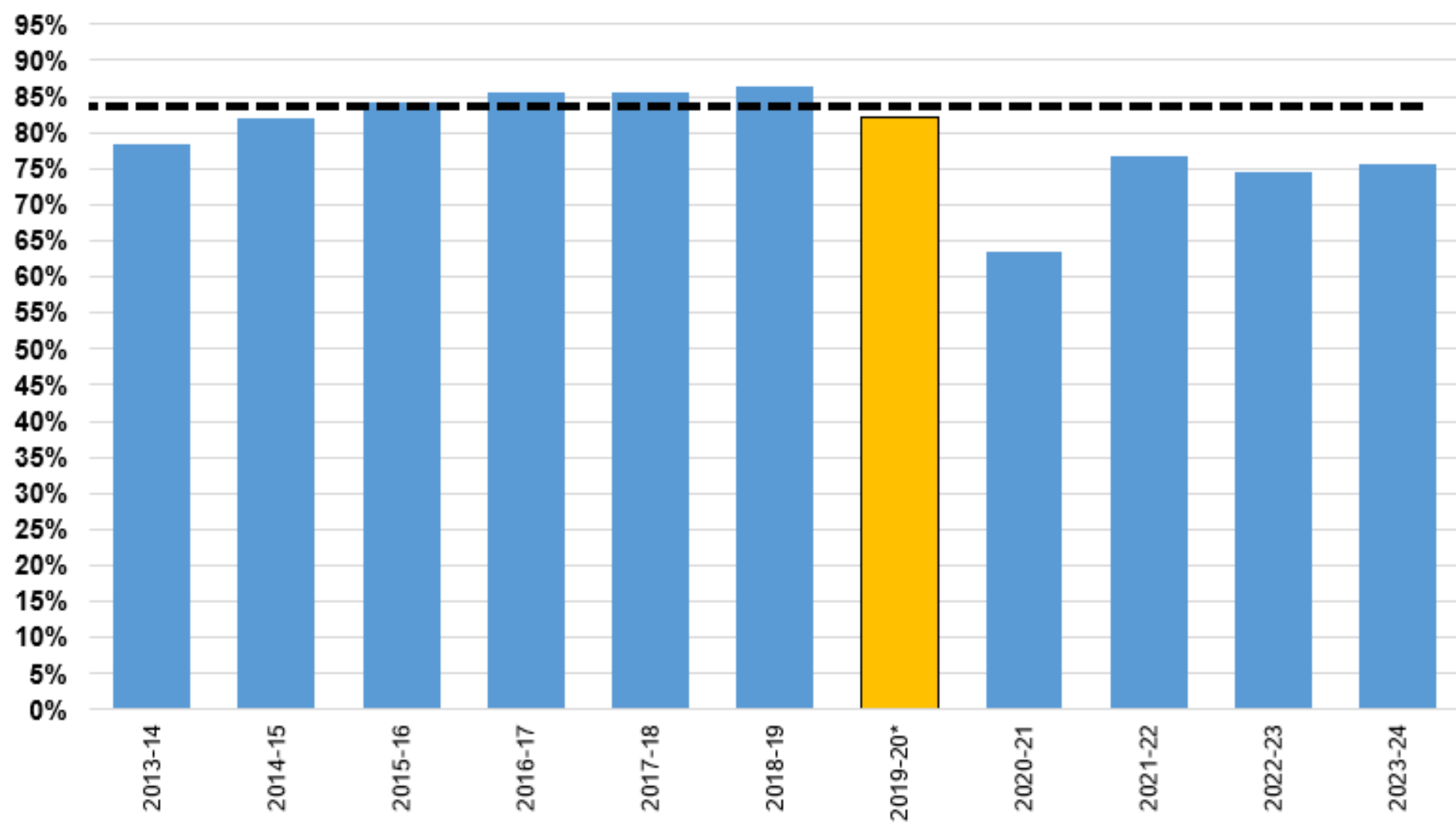


Ninth Grade On Track



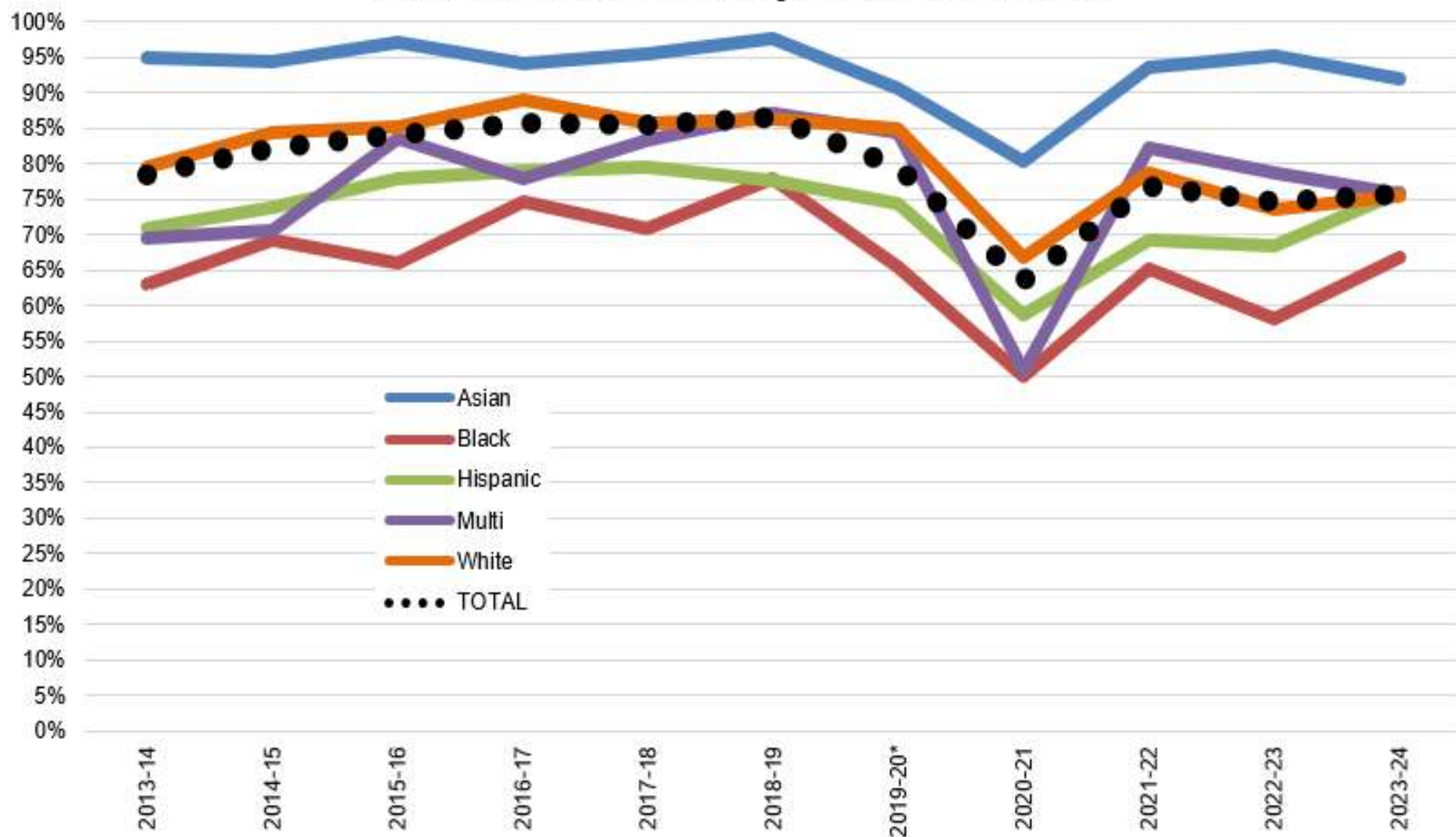
Ninth Grade On-Track

Source: ODE Achievement Data Insight; 2019-20 is Internal DDSD



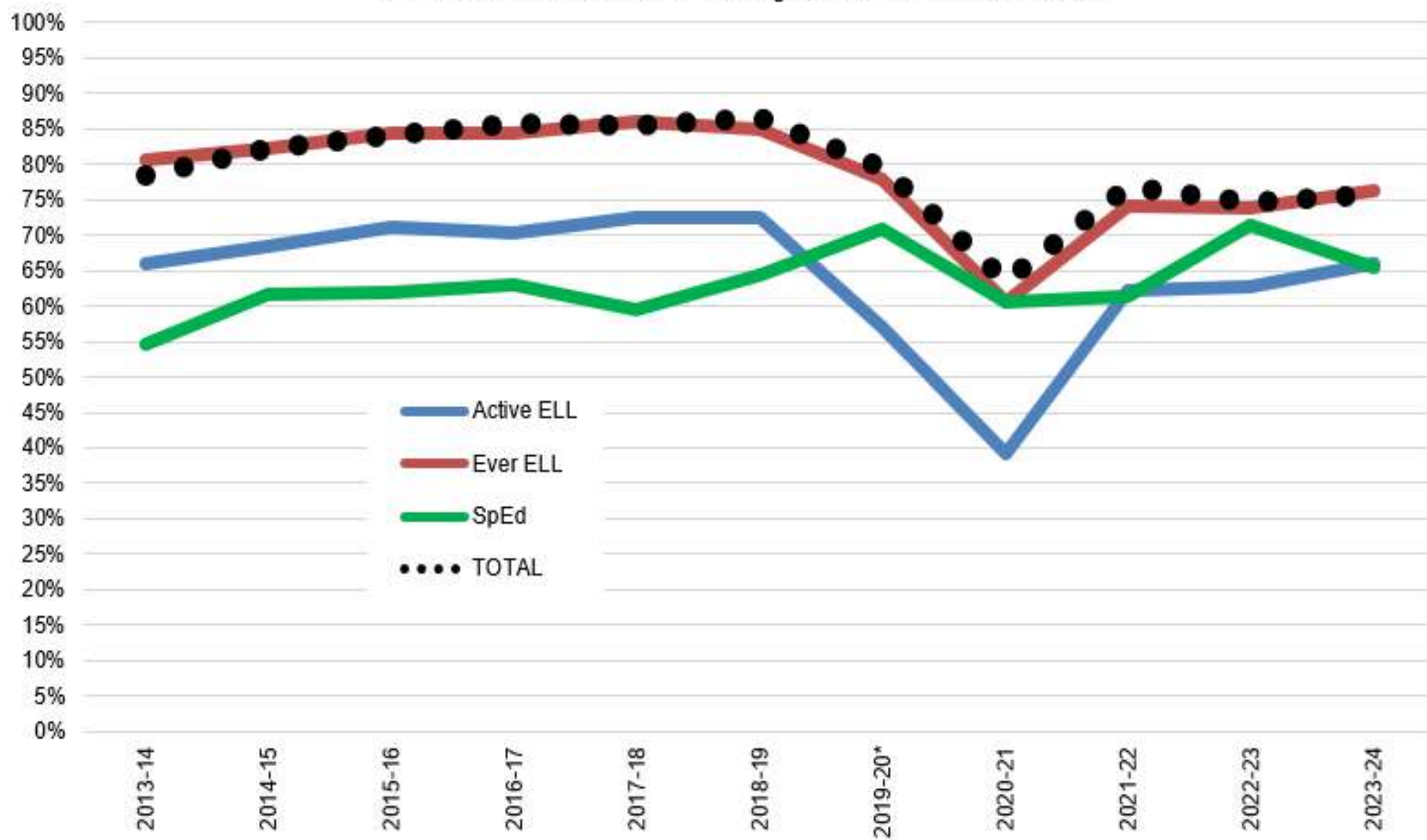
Ninth Grade On Track

Source: ODE Achievement Data Insight; 2019-20* is Internal DDSD



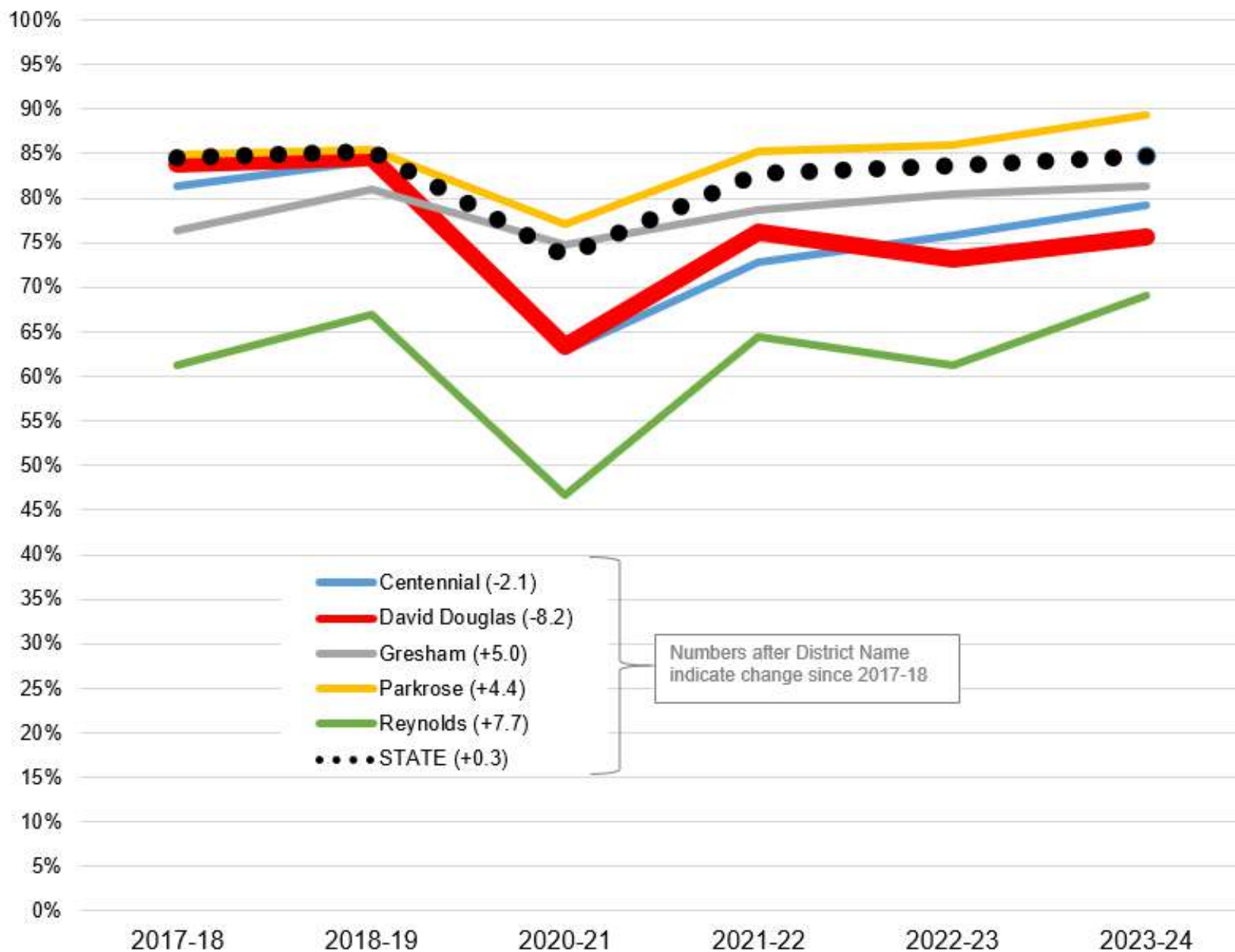
Ninth Grade On Track

Source: ODE Achievement Data Insight; 2019-20* is Internal DDSD



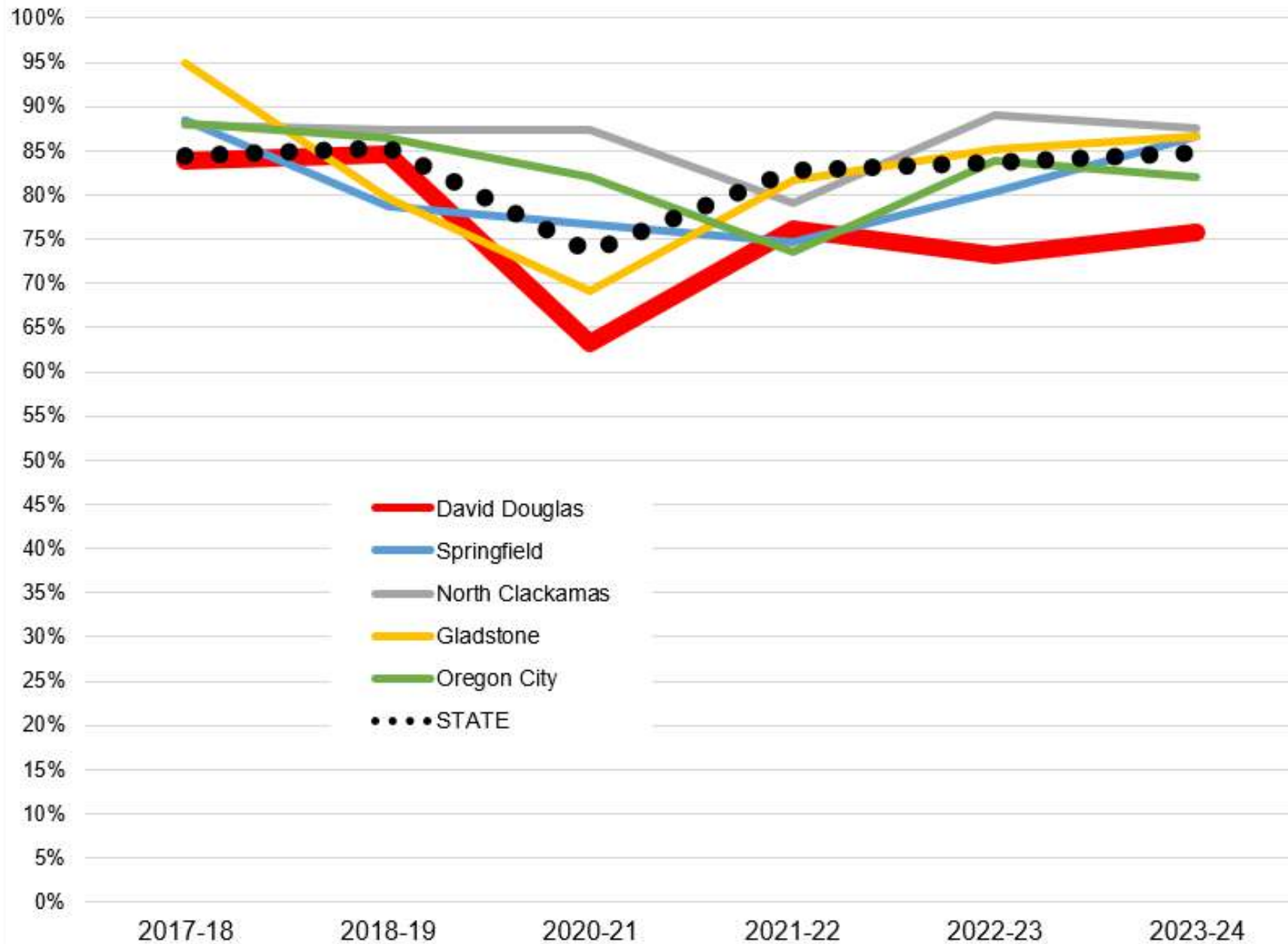
Ninth Grade On Track (6.0+ Credits)

Source: ODE Public Website



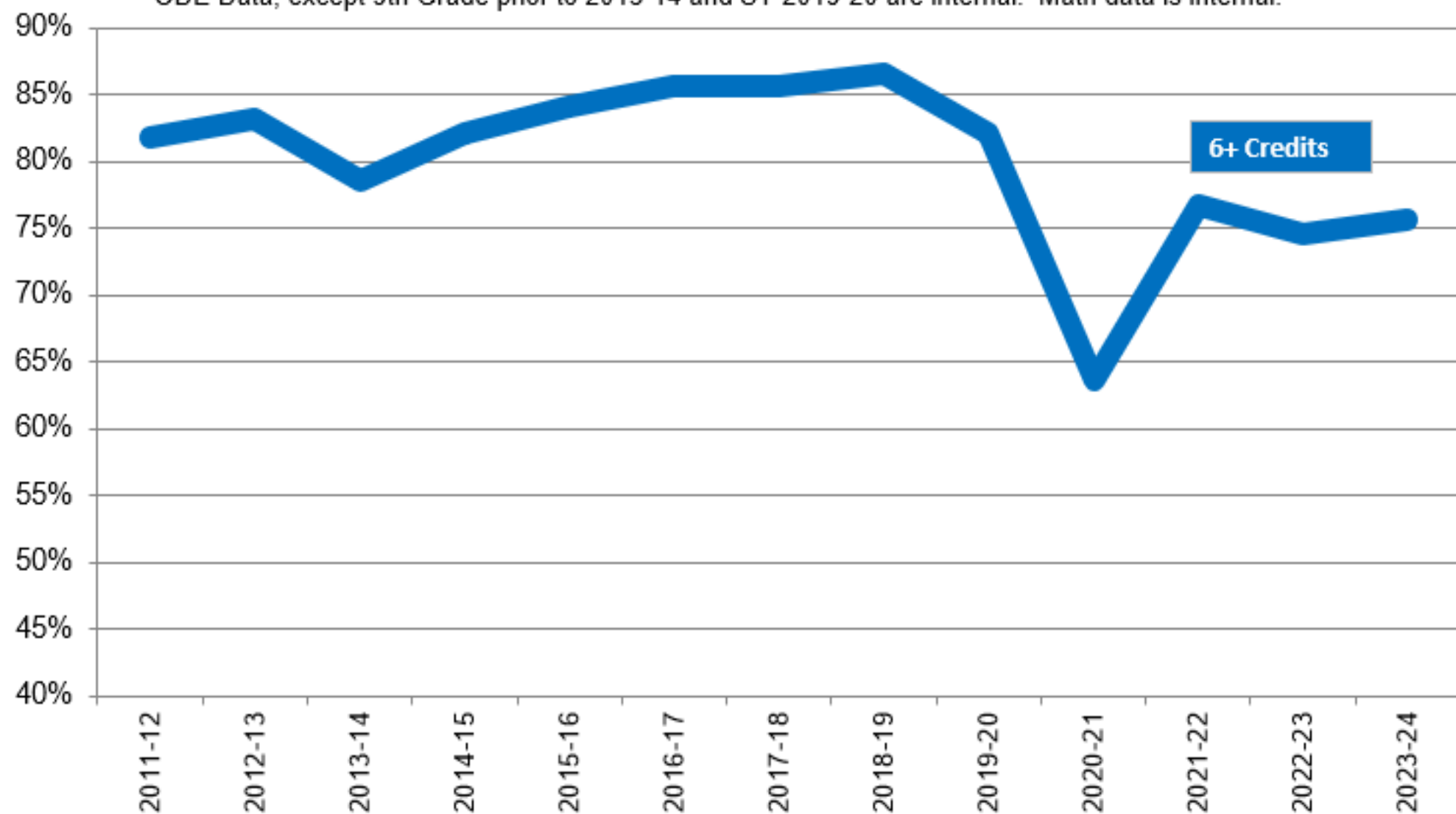
Ninth Grade On Track (6.0+ Credits)

Source: ODE Public Website



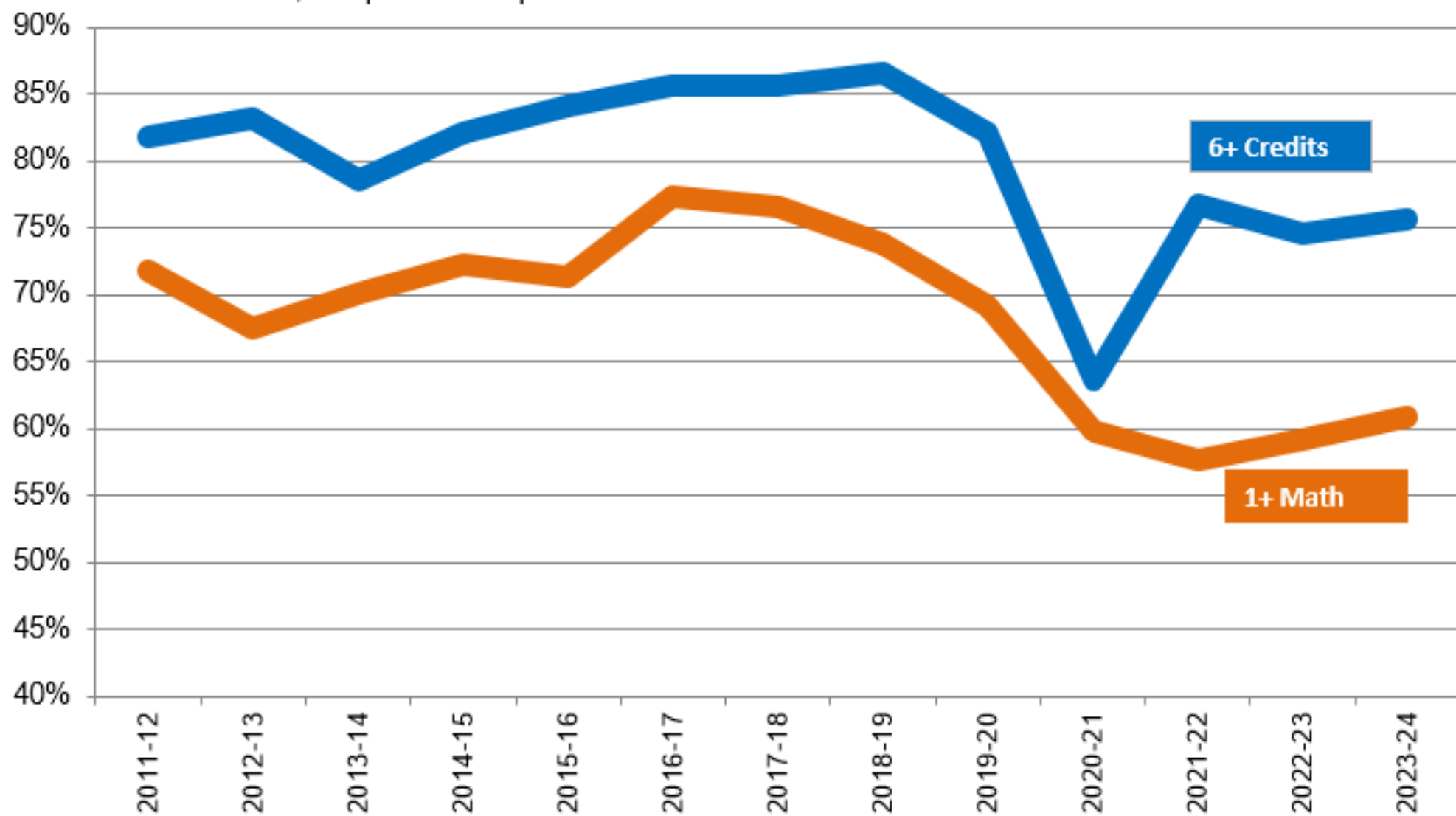
9th Grade On Track

ODE Data, except 9th Grade prior to 2013-14 and SY 2019-20 are internal. Math data is internal.



9th Grade On Track

ODE Data, except 9th Grade prior to 2013-14 and SY 2019-20 are internal. Math data is internal





On-Track Status as a Predictor of Graduation

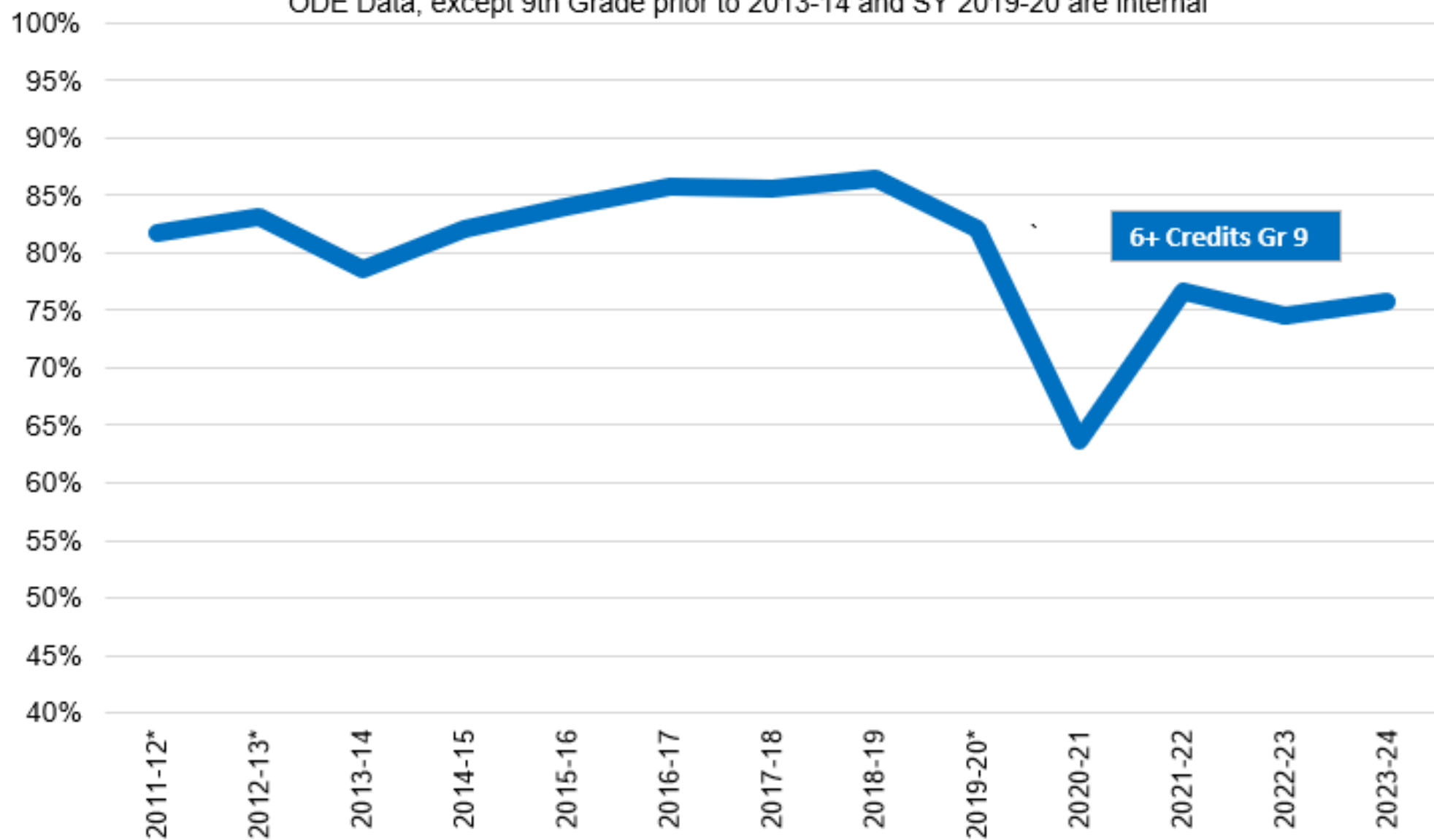
In 2013-14, the Oregon Department of Education (ODE) began collecting an indicator of on-track status for first-time freshmen, defined as the percent who had at least 25% of the credits needed to graduate with a regular diploma by the beginning of their sophomore year. In 2016-17, many of these students graduated, giving us our first opportunity to examine relationships between this indicator and graduation or completion.

[Previous work](#) has found a strong relationship between the on-track indicator and likelihood of dropout, performance on standardized



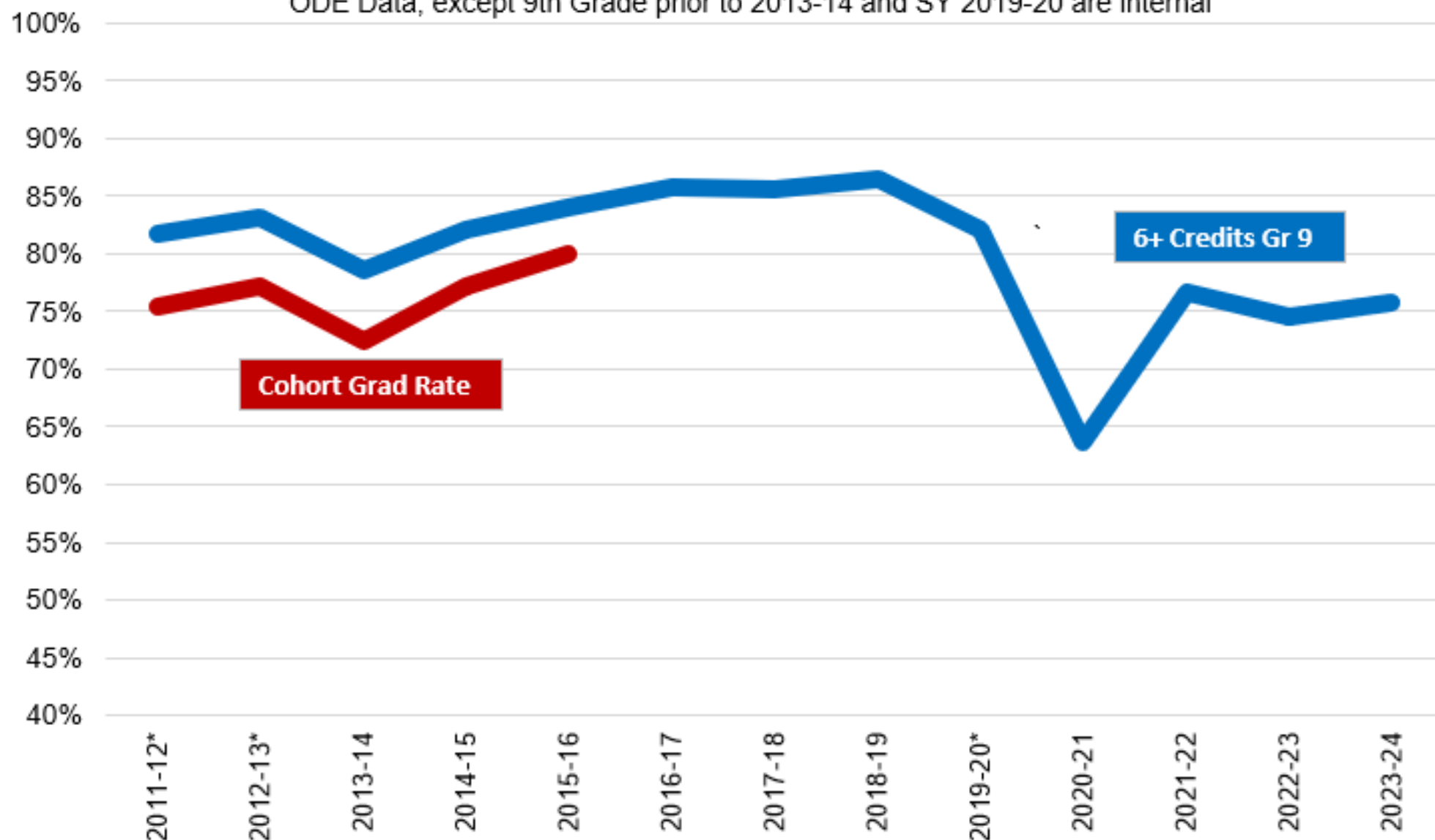
9th On Track and Graduation Correlation

ODE Data, except 9th Grade prior to 2013-14 and SY 2019-20 are internal



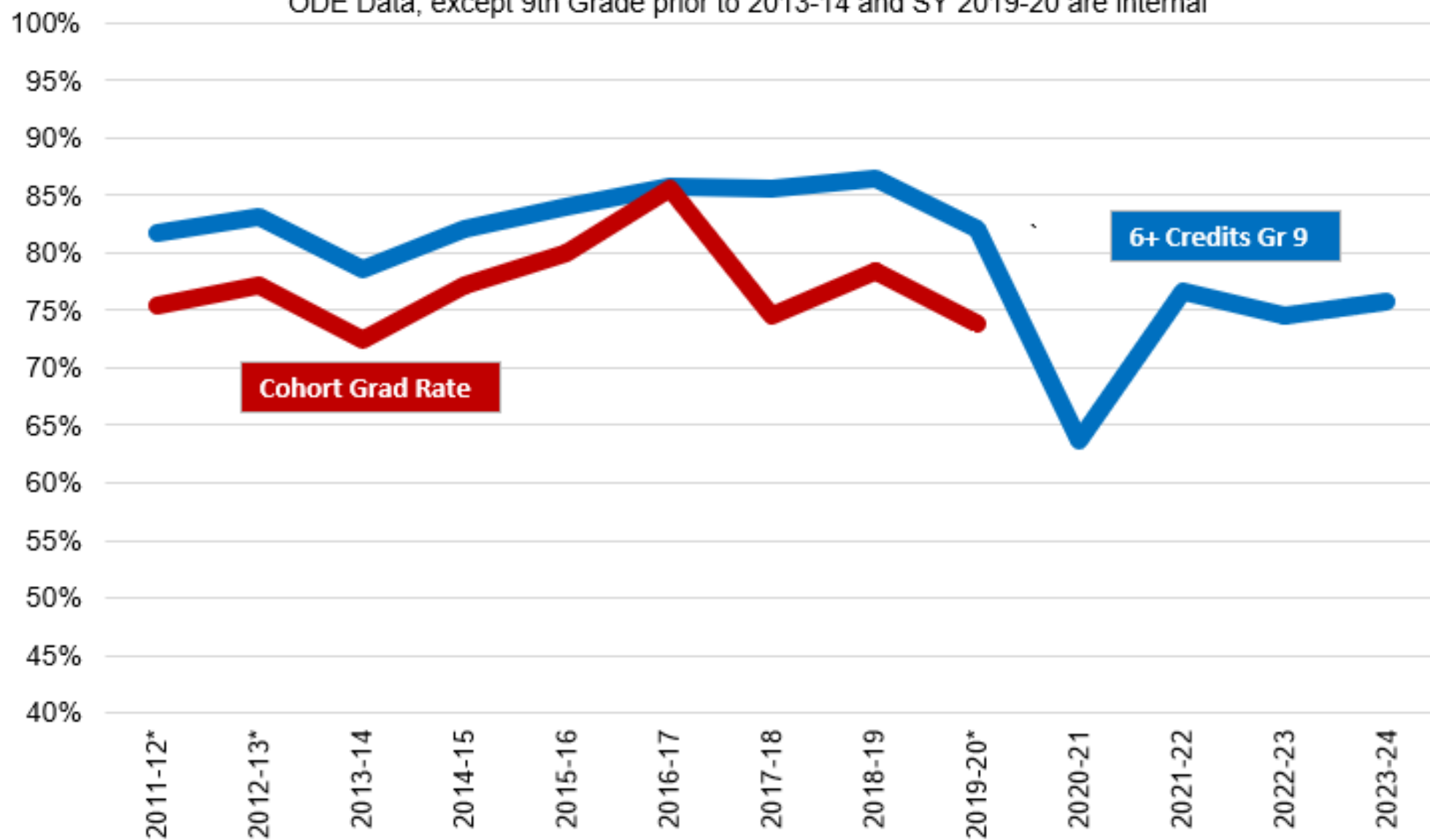
9th On Track and Graduation Correlation

ODE Data, except 9th Grade prior to 2013-14 and SY 2019-20 are internal



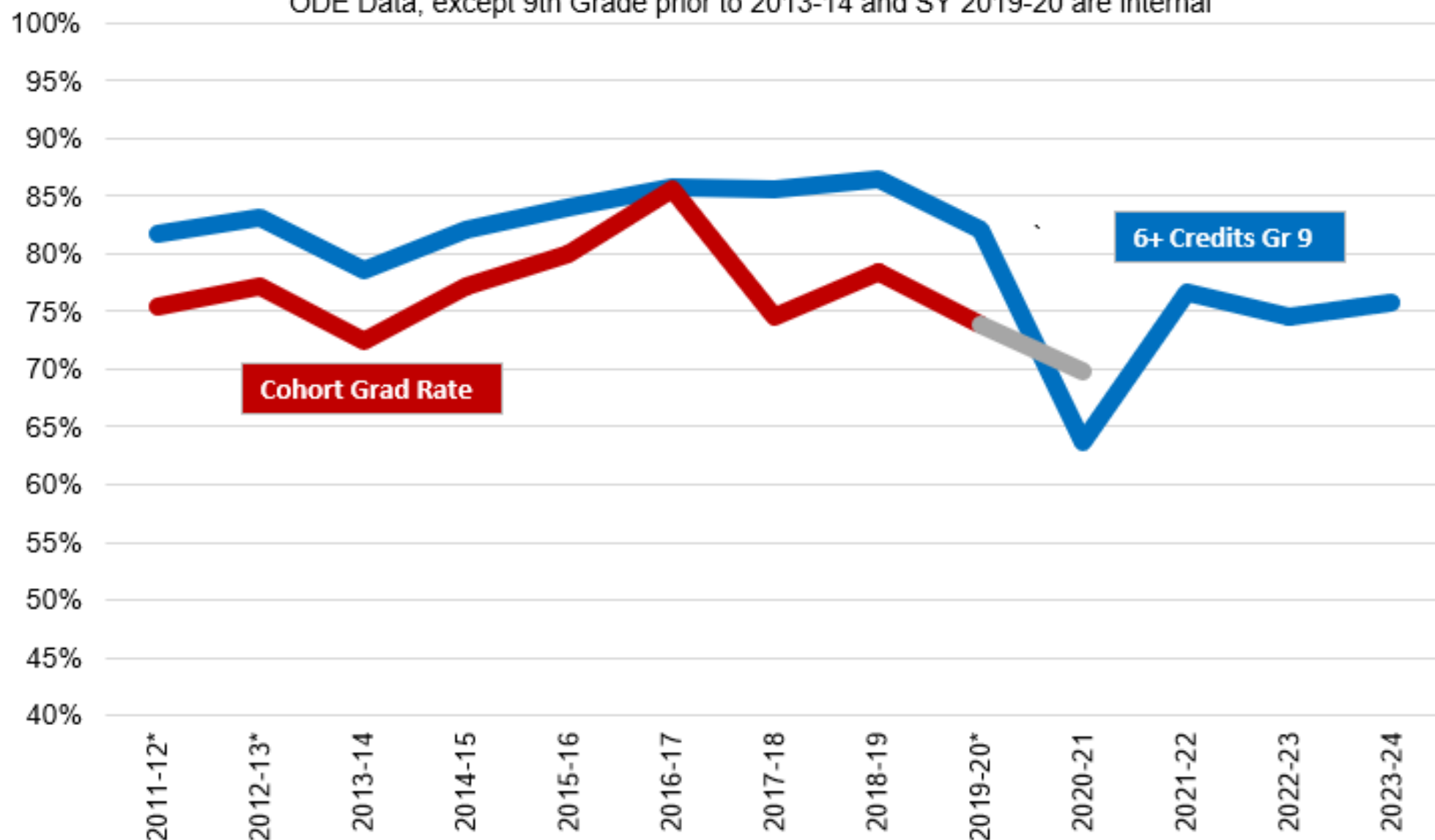
9th On Track and Graduation Correlation

ODE Data, except 9th Grade prior to 2013-14 and SY 2019-20 are internal



9th On Track and Graduation Correlation

ODE Data, except 9th Grade prior to 2013-14 and SY 2019-20 are internal



9th On Track and Graduation Correlation

ODE Data, except 9th Grade prior to 2013-14 and SY 2019-20 are internal

