

Why Spell Checking and Proofreading is Important

Compliments of Jay Leno's "headlines"

RUGER Red Label over/
under 12 gauge shotgun, fired
1 box of shells, 3 mo. old, new
cond, \$795. 660-984-~~5000~~.

RUGER RED LABEL, 20
gauge, with choke tubes, \$900,
292-~~5000~~

Sniff in Wesson 44 Magnum;
\$425/offer. Ruger 357 Mag-
num; \$295. ~~292-5000~~

Spring Turkey Hunts! Holt
Creek Getaway. Atkinson,
NE. Taking applications for
Spring Turkey season. 4
Hunts available. (402) 925-
~~5000~~ Leave message.

SIINNANTANNA sun tan

SAVE

4 regular Road Beef sandwiches for \$5

ARBYS

\$2

- #8. Beef Pepper & Tomato
- #9. Beef Kow
- #10. Shrimp Chop Suey
- #11. Shrimp Broccoli
- #12. Sweet & Sour Chimp
- #13. Bar-B-Q Pork Egg Foo Young

MISCELLANEOUS



2004 Chrysler Pacifier AWD

7000 miles, Certified #95788

\$29,995

Due to unforeseen circumstances we have had to make a quick move. We are sorry for any incontinence that this may cause you. We would love to have you come and see us at our new location. We will explain everything to you when we see you.

You can now find us next door to Wendy's on Henry Street.

3023 HENRY ST.

'BRIDGEWATER — Jerry ~~Greenfield~~ of Ben and Jerry's fame will spoke at Bridgewater State College Wednesday.

Greenfield brought his business philosophy of social responsibility and progressive values to campus at 8 p.m. Wednesday. Ice cream ~~was~~ be served.

Ben and Jerry's Homemade, Inc. skyrocketed from a storefront business to a \$200-million pub-



Jonah: A VeggieTales Movie™

Kid-friendly and filth-filled, the VeggieTales® adaptation of Jonah's encounter with the whale is engaging fun for the entire family.

DVD. Item# 943230 \$19.99



Wednesday Lunch

*Ham & Beans or Meatloaf
Spaghetti & Salad or Chicken Fajita & Fries*

Supper

Stuffed Salmon or Chopped Steak

Thursday Lunch

*Broasted Chicken or Pork & Dressing
Pork Manhattan*

Supper

Chicken Gizzards or Whole Cat

Friday Lunch

*Homemade Beef & Noodles
or Deep Fried Cod*



Monday

	Hamburger, fries, fruit.
ol	Beef/cheese nachos, green beans, peaches, chocolate pudding.
ry	Beer/cheese nachos, green beans, peaches, chocolate pudding.
's	French toast, fruit, juice, sausage.
SS	Breaded chicken nuggets or hoagy sandwich.

Amedeo's

ENTREES

Heart of Sole

\$12⁹⁵

*** Baked Brother & Sister**

\$12⁹⁵

Chicken Sorrentino

12

38
38
38

Help Wanted

General

350

CHILD CARE Provider.
Apply in person, Jack & Kill
Childcare, 1905 NW Smith.
NO PHONE CALLS.

CHILD CARE PROVIDERS



State spelling standouts



are planning. We will vote on this project in January, so we need everyone to attend this special meeting.

Several members who have been in the hospital are not on the road to recovery, for which we are all thankful.

Anyone who has trouble getting to a meeting should call an LMC member so a ride can be

Jumbo seafood & Deli

Tuesday Night Is ITALIAN NIGHT

**Homemade Italian Food
Prepared by Chef Crappy**

**Former Owner and Chef
of Louisa's Ristorante Italiano!**

Served
4 to 8 p.m.
This week's menu
features

- Chicken Marsala
- Baked Ziti
- Chicken Alfredo
- Linguini with Meat Balls
- Deli -
(Desserts)
- Creme Brulee
- Chocolate Swirl Peanut
Butter Pie
- Frangelica Cheesecake
& "Tiramisu"

•Dine-In
•Carry-Out

JUMBO

Full Service
Catering

Walt Disney Presents

VALIANT G

SKY HIGH PG

RED EYE PG-13

Starring Rachel McAdams

FOUR BROTHERS R

Starring Mark Wahlberg

Now Open 4 Nights a Week!

Arrive By 7:30 and get a **FREE Chihuahua Sandwich** * (1 per car)

Playground
For The Kids



DRIVE-IN THEATRE

Box Office Opens at

FRI & SAT 6PM • SUN & WED 6:30 PM

NO CARLOAD RATE ON WEDNESDAYS

Quiz Bank Jackpot Prize \$300

749- [REDACTED]

[www.DriveInUSA](http://www.DriveInUSA.com) [REDACTED]

2 movies for \$5 • Kids 5 & under are FREE!

Clovis Hwy 84

(Between Quaker & Frankford)

Governor will help people with gas

By Shawn Johnson

Wisconsin Governor Jim Doyle says he will double the amount of money available to people who may need help paying their heating bills this winter. The additional \$16 million in aid is part of a larger initiative aimed at reducing the affect of natural gas cost increases.

Experts say natural gas prices could rise as much as 70 percent this winter. Governor Doyle says Wisconsin is joining seven other states in promoting conservation efforts that could reduce demand for natural gas and cut the price by 13 percent over the next five years.

Janet Brandt of the Wisconsin

Public Service Commission to speed up permits for industrial energy efficiency projects that are already in the pipeline. She says there are more than 200 projects right now that are "doable," but there's no movement on them. She says the projects would save seven million therms, the amount of gas needed to heat 7,000 homes for a year. One of the biggest projects awaiting action involves changing the heating system at an ethanol plant near Eau Claire.

Environmental groups are applauding the emphasis on conservation, but Brett Husley of the Sierra Club says it's important not to focus only on cutting natural gas consumption. He

SCHOOLS & TRAINING

Health Information Technology • Nursing • Health & Exercise Science • Paralegal • Pharmacy Technology • Medical Assistant
Legal Administrative Assistant • Business Administration • Veterinary Technology • Massage Therapy • Advertising & Design

SUCCESSFUL FUTURES START HERE!

*Begin a new career path or further your current career
with an education from Utah Career College.*

Day, Evening, & Online Classes
Associate Degree & Diploma Programs
Career Placement Assistance
Financial Aid & VA Education Benefits
DIPLOMA QUALITY



801.855.1234

www.utahcollege.edu

1902 W 2000 S • West Jordan, UT

ning

oom



WHEN WE
SAY \$15
PER
ROOM... WE
MEAN \$115
PER ROOM!

25.	CHINESE VEGETABLE	1.95	3.50
26.	EGG DROP SOUP	2.50	4.50
27.	SZECHUAN HOT & SOUR	2.50	4.50
28.	VEGETABLE TOFU SOUP		

Not Responsible For Lost Articles

Consumny Gaw or Undercooked Meats, Poultry, Seafood,
Shellfish or Eggs may Increase Your Risk of Foodbone
Illness, Especially If You have cestain Medical Conditions

Benefits

Member of SHRM, you will have access to exclusive member benefits—most free, some at a reduced rate. The price of membership far exceeds the value that you'll receive.

"The information in a timely manner is critical to a professional's ability to stay current and be proactive."

Dr. Hospice of Marion County Inc.



\$7.99

**OF
MENT**



DVD MOVIE
Limit 1 Per



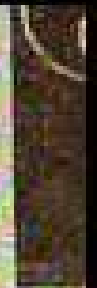
\$7.99

**THE TEXAS
CHAINSAW MASSAGE**

625752
omer



DVD MOVIE
Limit 1 Per



FRIDA

8096909
stomer



Always use SPELLCHECK and
PROOFREAD your work before
you turn it in.

Dreamweaver – Text, Check Spelling

Microsoft Word – Review, Spelling and Grammar

Any
questions?