



Recommended ELA  
SKILLS

**10:00**

# MEANINGFUL Monday

Date: \_\_\_\_\_

I know... Life is hard on Monday, but it's time to awaken your brain! Let's make today a Meaningful Monday!

## Literary Terms

Match the literary term on the left to its meaning on the right.

**foreshadowing**

the feeling the readers get when reading the author's words

**tone**

to warn or indicate a future event

**mood**

the author's attitude toward the subject they are writing about

I run almost every day. Every time, I am joined by lizards. I try very hard to avoid them because I don't want to hurt them as they run from one side of the sidewalk to another. With my earphones on, I jogged to the end of the neighborhood. A green lizard darted across my path. Almost missing my step, I jumped over it. When I reached the stop sign, I turned and prepared to make my way back home. Suddenly, a second brown lizard scrambled to get away from the bottom of my shoe. I couldn't stop fast enough. The lizard escaped death, but I still stumbled. I tried to catch myself with my hands, landing on my knee. As blood poured, I thought about the things I do to save these lizards.

## Synonyms or Antonyms?

1. eerie, spooky \_\_\_\_\_
2. anguish, misery \_\_\_\_\_
3. treacherous, harmless \_\_\_\_\_
4. diminish, develop \_\_\_\_\_
5. meager, ample \_\_\_\_\_

Which of the following is an example of **foreshadowing**?

- a. I run almost every day.
- b. I couldn't stop fast enough.
- c. A green lizard darts across my path.
- d. I land on my knee.

# Morphology Word Chains

Follow the steps to  
create new words.

Start with the word in the box.

response

Add the suffixes -ive.

responsive

Change the suffix to -ible.

Responsible

Add the prefix ir-.

irresponsible

Change the base to reverse.

Irreversible

Remove the prefix ir-.

Reversible

# DAILY DOSE OF EDITING

#2

1

**EDIT**



Draw a line under each of the FIVE mistakes.

there are a bunch of kid's playing soccer in the parc down they Street.

2

**FIX**



Rewrite the sentence with the corrections made.

3

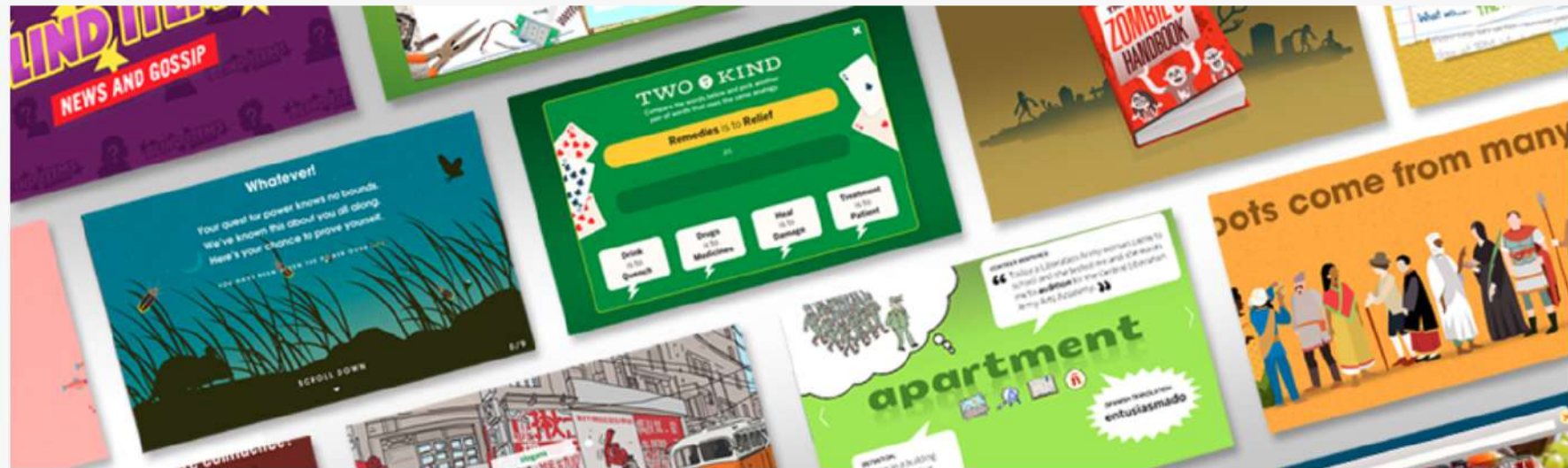
**STRENGTHEN & ELABORATE !**

Use part of the sentence, but make some changes. Use more detail to make it stronger.

In the park down the street, there are quite a few children playing soccer, basking in the sun.



Open the **Vocab App**.





# Lesson 1: A Nightmare in Philadelphia

 Printable Lesson Guide

## Lesson Objective

**Reading:** Students read for details that help to explain the impact of yellow fever on the narrator and the city of Philadelphia.

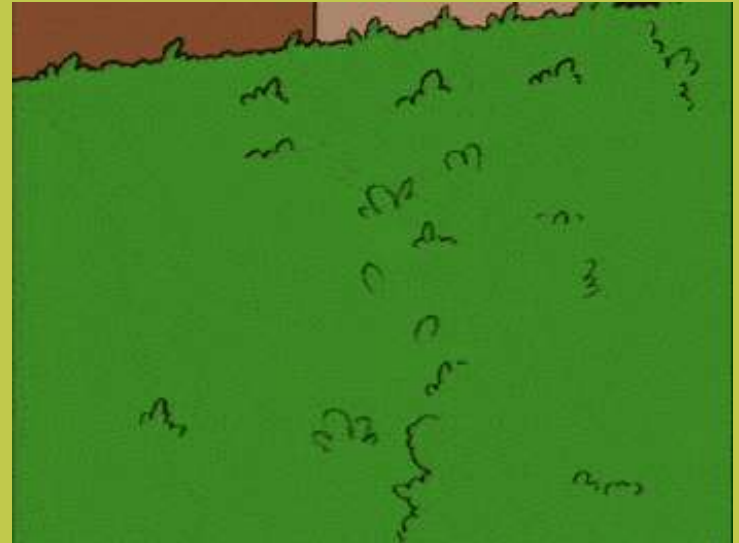
**Writing:** Students will write from the perspective of Matilda to describe the impact of yellow fever on her hometown of Philadelphia.

### Language Objective:

Students will be able to use past tense verbs (e.g., *lived*, *happened*, *felt*) to describe the impact of yellow fever on the narrator and the city of Philadelphia. They will also be able to respond to questions about their own experiences as Matilda, such as "How did yellow fever change your life?" or "What were your biggest fears during the epidemic?"

**Lurk-verb**—The streets of Philadelphia are more dangerous than your darkest nightmare. Fever victims lay in the gutters, thieves and wild men **lurk** on every corner.

Hungry lions **lurk** in the tall grass, waiting to catch their next meal.





05:00

Students identify key details that help them infer what life was like in Philadelphia before yellow fever.



*SECOND STREET North from Market St. to CHRIST CHURCH.  
PHILADELPHIA.*

1. Look at the image of the city of Philadelphia from the 1790's. Describe what you see in a complete sentence.

"In the picture of Philadelphia from the 1790's I see \_\_\_\_\_."

1. Does the sense of community (how people interact with each other) seem strong or weak? Describe a detail from the image that supports your answer.

"The sense of community seems \_\_\_\_\_. I know this because \_\_\_\_\_."

5. What do you infer life would be like in Philadelphia in the 1790s? Describe one detail that you observed in the picture to support your answer.

"I infer that life in Philadelphia in the 1790's was \_\_\_\_\_. One detail to support my inference is \_\_\_\_\_."

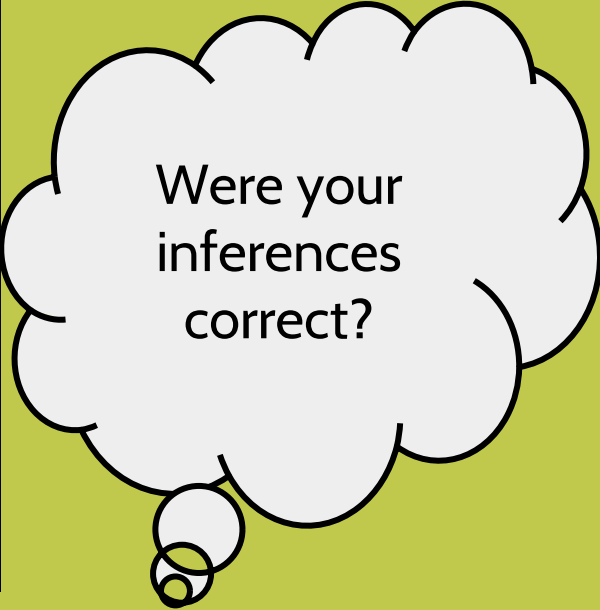




# SHORTCUT

HISTORY MAKING  
AND DISCUSSIONS

Randall Miller  
On the 1790s Street



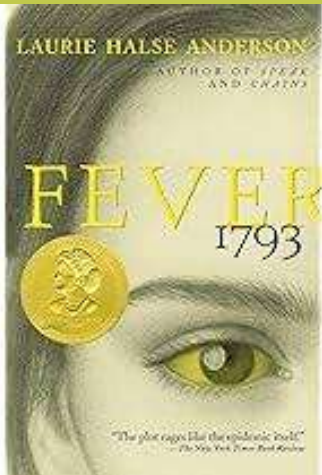
Were your  
inferences  
correct?

This reading is from *Fever 1793*, a novel by Laurie Halse Anderson. In the novel, yellow fever hits Philadelphia in 1793, and the novel's main character, 13-year-old Matilda (Mattie), flees the city with her grandfather. In this passage, Matilda and her grandfather are returning to Philadelphia, where they hope to find her mother and resume their lives.

I read- Paragraphs  
21-28

You read- 29-End

While reading-  
**HIGHLIGHT** details  
that help us  
understand how  
Mattie sees her city.



10:00

Be prepared to explain which detail you  
highlighted and why!



"A detail I highlighted in paragraph \_\_\_\_  
is when Mattie\_\_\_\_\_."

4

READING

Select Text: "A Dying City"

1

Reread this quote: "Where there should have been an army of carpenters, masons, glaziers, plasterers, and painters, I saw only empty shells of buildings, already falling into disrepair after a few weeks of neglect." (21)

1. What does the phrase "there should have been an army of carpenters, masons, glaziers, plasterers, and painters" suggest?

A

Matilda had never seen these things before, but wanted to see them now.

B

Matilda had seen these things before, and expected to see them now.

C

The army has occupied Philadelphia.

2. Copy and paste three details that show the impact of yellow fever on the daily life of Philadelphians.

Make sure your evidence is in quotation marks!



05:00

3. Based upon the information from this passage, what is the biggest impact that yellow fever has had on the people of Philadelphia?

"The biggest impact that yellow fever has had on the people of Philadelphia is....."

4

READING  
Select Text: "A Dying City"



2



Reread paragraph 37–39.

1. They find a man in the street. What happened to him?

A He was murdered.

B He was robbed.

C He was dead from yellow fever.

D He starved.

2. Highlight three details that give you a picture of who the man is and what happened to him.

3. What do these details show you about the impact of yellow fever on people's behavior?

“The details presented show the impact of yellow fever on people's behavior because \_\_\_\_\_.”

07:00



5

READING  
Select Text: Community  
Values



1

4. Reread the rest of the passage and highlight a detail that supports or gives you a different idea about what has happened to people's behavior.

Par. 40-49

5. What does Mattie mean when she says that yellow fever is infecting "the nature of the people" (41)?

When Mattie says that yellow fever is infecting "the nature of the people" she means \_\_\_\_\_.

05:00

41 How could the city have changed so much? Yellow fever was wrestling the life out of Philadelphia, infecting the cobblestones, the trees, the nature of the people. Was I living through another nightmare?

6. What idea does the passage give you about the effect yellow fever had on Philadelphia and its citizens in 1793?

Now that I have read the passage on yellow fever, I think the effect it had on people during that time is \_\_\_\_\_.

5

READING  
Select Text: Community  
Values



2

## Warm-Up - *WHOLE CLASS*

Raise your hand if...

- you think that the citizens of Philadelphia are in danger.
- you think that Matilda's mother should come to Philadelphia to help them.
- you think it's better that Matilda's mother stay away from Philadelphia.

You have a choice! You can complete it on paper, or in Canva!



# 15:00

Finished Early? Exit Ticket on Tab 8 & Solo on Tab 9



Task:

Write a postcard pretending that YOU are Matilda. Choose to either write to convince your adult to come back to Philadelphia or to warn your adult to stay away from Philadelphia.

You are writing in the 1st person so make sure to use 1st person pronouns- (I, me, we, my, etc...)

Use details from the passage to support your position....



Back

Dear Mom,

We made it to Philadelphia today, and it looks like a war zone. I think it's better that you stay where you are, I didn't realize everywhere was so bad. It's not easy seeing people so sick and not being able to help them. I hope this dies down so I can see you. Sincerely, Kelsey

Front

