

Brandon Valley School District  
District Learning Plan  
March 16-19, 2020

Grade 4 Social Studies/Science



# Brandon Valley School District Distance Learning Plan

LESSON/UNIT:

SUBJECT/GRADE: Science and Social Studies/4th

DATES: March 16 - 19, 2020



What do students need to do?	<p>Monday (3/16): Science- How 'bout them bones!</p> <p>Tuesday (3/17): Social Studies- work on my Informative State Project</p> <p>Wednesday (3/18): Science- Bones provide great support!</p> <p>Thursday (3/19): Social Studies-Work on My informative State Project</p>
What do students need to bring back to school?	<ul style="list-style-type: none"> <li>• State Project for Social Studies</li> <li>• Both science worksheets completed</li> </ul>
What standards do the lessons cover?	<p>4.G.2 Students will understand the nature and importance of the Five Themes of Geography: location, place characteristics, human-environment interaction, movement, and region</p> <p>4-LS1-1 Construct an argument that plants and animals have internal and external structures that function to support survival, growth, behavior, and reproduction.</p>
What materials do students need? What extra resources can students use?	<p>Lessons and activities on bones -</p> <p><a href="https://a2zhomeschooling.com/explore/biology_kids/anatomy_kids/skeleton_bones_worksheets_kids/">https://a2zhomeschooling.com/explore/biology_kids/anatomy_kids/skeleton_bones_worksheets_kids/</a></p>
What can students do if they finish early?	<ul style="list-style-type: none"> <li>• Switch Zoo: Watch, listen, and play games to learn all about amazing animals <a href="https://www.switchzoo.com/">https://www.switchzoo.com/</a></li> <li>• Nat. Geo. for Kids: Learn all about geography and fascinating animals! <a href="https://kids.nationalgeographic.com/">https://kids.nationalgeographic.com/</a></li> <li>• Mystery Doug: Science experiments and explorations to complete at home! <a href="https://mysteryscience.com/school-closure-planning">https://mysteryscience.com/school-closure-planning</a></li> </ul>
Who can we contact if we have questions?	<p><b>Brandon Elementary</b></p> <p><u>Teachers</u></p> <p>Building Principal: <a href="mailto:merle.horst@k12.sd.us">merle.horst@k12.sd.us</a></p>

Please click on the blue  
"Teachers" link to email  
a teacher.

**Fred Assam Elementary**

[Teachers](#)

Building Principal: [susan.foster@k12.sd.us](mailto:susan.foster@k12.sd.us)

**Robert Bennis Elementary**

[Teachers](#)

Building Principal: [Kristin.Hofkamp@k12.sd.us](mailto:Kristin.Hofkamp@k12.sd.us)

**Valley Springs Elementary**

[Teacher](#)

Building Principal: [tanya.palmer@k12.sd.us](mailto:tanya.palmer@k12.sd.us)

Notes:



# How 'bout them bones!

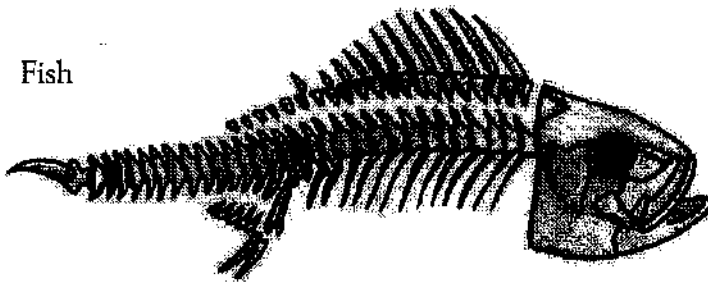
## Background knowledge

Not all animals have bones. Animals with bony skeletons inside of them are called *vertebrates*. All vertebrates have a backbone. Vertebrates include humans, dogs, snakes, fish, and birds. Skeletons give protection and support to the body, and help it to move. Animals such as worms, insects, snails, and jellyfish do not have bony skeletons; they are called *invertebrates*.

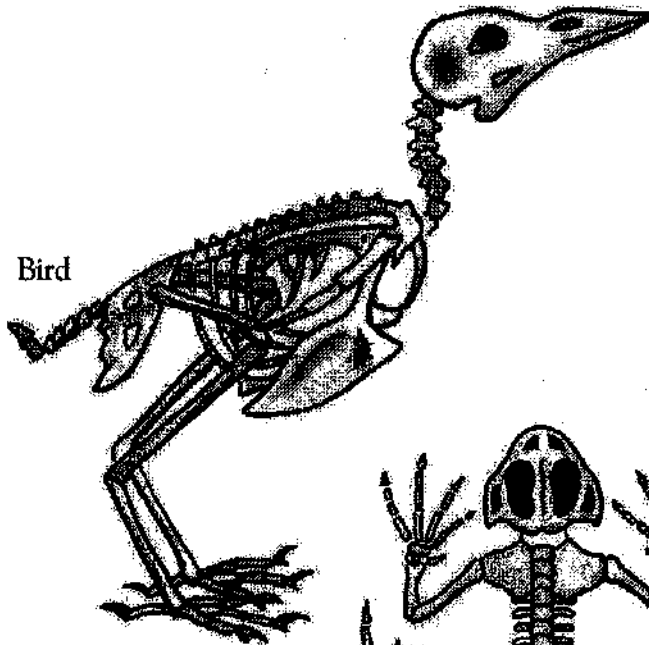
## Science activity

Here are the skeletons of a fish, a bird, and a frog. On each of the drawings, color in the part that protects the brain, and color in the backbone.

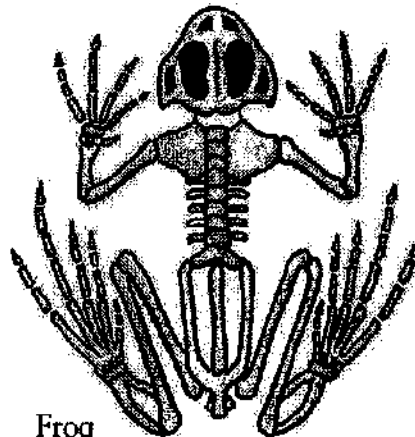
Fish



Bird



Frog



### Science investigation

⚠ Take extra care - ask an adult to supervise you.

Ask an adult to remove the meat from a cooked beef bone and the wing, leg, and neck of a chicken. Trace the bones onto a piece of paper and label them. Draw an arrow to a joint on the chicken wing. How does a beef bone compare to a chicken bone? Is one harder than the other?



# Bones provide great support!



## Background knowledge

Inside your body is a *skeleton* made of *bones*. Bones mostly contain a material called *calcium*. Your skeleton protects the soft inner parts of your body.

*Muscles* pull on parts of the skeleton to make your body move. A *joint* is a place where two bones meet. Some joints allow parts of the skeleton to bend. Your skeleton provides the support you need to give your body a shape—otherwise you would be a ball of jelly!

## Science activity

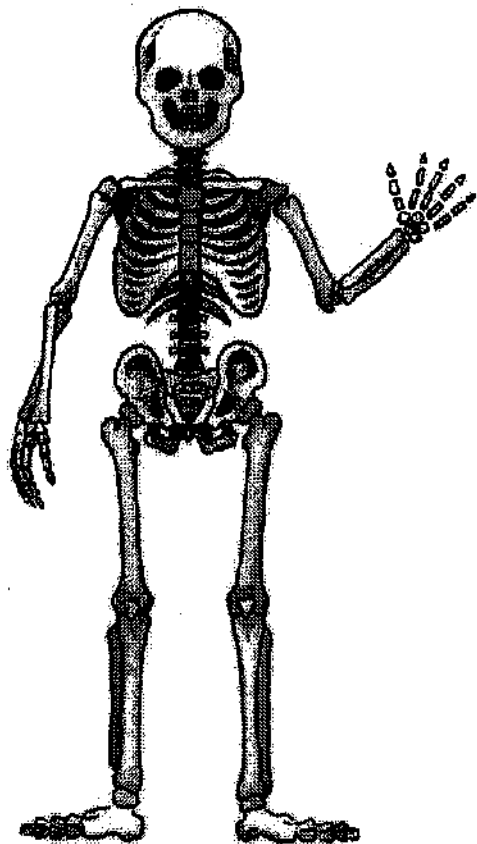
Here is a picture of a human skeleton. On the picture draw the four arrows listed below, and label them A, B, C, and D.

Arrow A should point to the part of the skeleton that protects the brain.

Arrow B should point to the joint that allows the leg to bend at the knee.

Arrow C should point to the part that protects the lungs.

Arrow D should point to the part that protects the heart.



## Science investigation

Trace your hand onto a piece of paper. Feel your bones and see if you can draw a map of the bones on your hand.



# My State Project

My state is \_\_\_\_\_. It was the \_\_\_\_\_ state to enter the union.

The nickname for my state is \_\_\_\_\_.

The states and oceans that border my state are:

_____	_____
_____	_____
_____	_____

My state's motto is:

_____
_____
_____

One river in my state is \_\_\_\_\_.

Color your state on the map below.



# My state Measures Up!

My state is the \_\_\_\_\_ largest state in our country.

My state is \_\_\_\_\_ square miles.

The highest point in my state is \_\_\_\_\_  
at \_\_\_\_\_ feet.

The lowest point in my state is \_\_\_\_\_ at  
\_\_\_\_\_ feet.

The highest temperature in my state was \_\_\_\_\_°.

The lowest temperature in my state was \_\_\_\_\_°.

The three largest populated cities and their populations are:

City	Population
1.	
2.	
3.	

## My State's Capitol

My state's capital is the city of \_\_\_\_\_.

The capital was founded in \_\_\_\_\_. (date)

\_\_\_\_\_ work in the capital building.

Some interesting facts about this capital city are:

---

---

---

---

# Great Information To Know!

My state makes:

---

---

My state raises \_\_\_\_\_.

My state mines \_\_\_\_\_.

Some animals in my state are:

---

---

Who lived in my state before European settlers?

---

---

## What You Can Find In My State!

These are two museums you can visit in my state:

---

This National Park, \_\_\_\_\_, is in my state. There are \_\_\_\_\_ sites.

Here are four INTERESTING facts or FUN activities to do in my state!

1. \_\_\_\_\_  
\_\_\_\_\_

2. \_\_\_\_\_  
\_\_\_\_\_

3. \_\_\_\_\_  
\_\_\_\_\_

4. \_\_\_\_\_  
\_\_\_\_\_