

TWILIGHT U

& THE VISUAL ARTS PROGRAM
PRESENTS

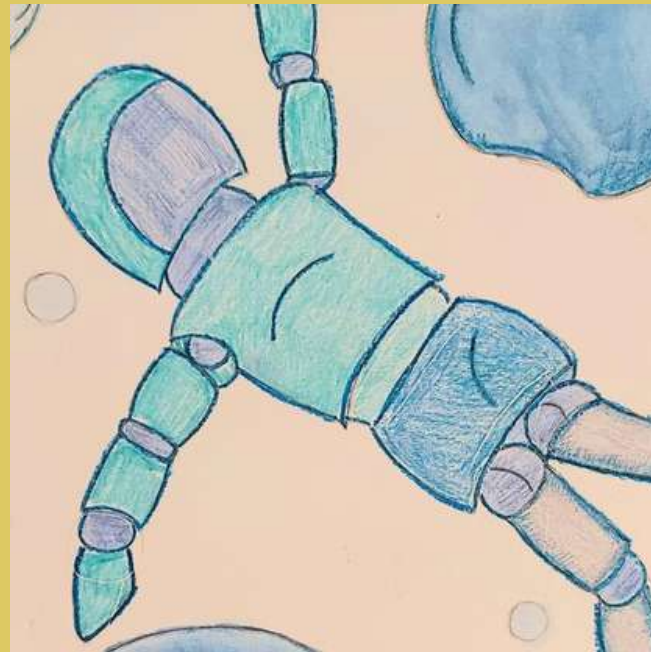
PERCEPTIONS: AN ART EXHIBIT

WEDNESDAY, JANUARY 24, 2024

5:30 PM

ORANGE HIGH SCHOOL
LIBRARY MEDIA CENTER
400 LINCOLN AVENUE
ORANGE, NJ 07050

MS. M. ALEXANDER, ART EDUCATOR
DR. E. STEWART, PRINCIPAL



TWILIGHT U
PERCEPTIONS: ART EXHIBIT
WEDNESDAY, JANUARY 24, 2024









Kimmy Cantrell Inspired Masks

Students created masks and a nude inspired by Kimmy Cantrell's artwork.

We discussed his use of Picasso and African inspired styles with asymmetrical faces, geometric shapes and lines. We used cardboard, paint and oil pastels.

Kehinde Wiley Portraits

Students were introduced to Kehinde Wiley's portraiture style which shows everyday people with a traditional floral or patterned backgrounds.

We used patterned paper and drew from referenced portraits from magazines to create inspired collages.



Keith Haring Figures

Students designed figures in the style of Keith Haring's 80s street art. They used line, color and symbolism to create simplified figures.

Self- Reflection Portraits

At the beginning of the semester, students reflected on how they see themselves versus how others see them.

GRAFFITI STYLE NAMES

Students designed their names in a graffiti style which included symbols that represented them.

Affirmation Card Collages

I introduced students to my affirmation card artwork in January. After deciding on an affirmation to focus on, students began designing a card collage.

Visual Art NJCCCS:

- 1.5.12prof.Cr1a: Use multiple approaches to begin creative endeavors.
- 1.5.12prof.Cr1b: Shape an artistic investigation of an aspect of present-day life using a contemporary practice of art and design.
- 1.5.12prof.Cr2a: Engage in making a work of art or design without having a preconceived plan.
- 1.5.12prof.Cr2b: Explain how traditional and non-traditional materials may impact human health and the environment, and demonstrate safe handling of materials, tools and equipment.
- 1.5.12prof.Cr2c: Collaboratively develop a proposal for an installation, artwork, or space design that transforms the perception and experience of a particular place.
- 1.5.12prof.Cr3a: Apply relevant criteria from traditional and contemporary cultural contexts to examine, reflect on and plan revisions for works of art and design in progress.
- 1.5.12prof.Pr4a: Analyze, select and curate artifacts and/or artworks for presentation and preservation.
- 1.5.12prof.Pr5a: Analyze and evaluate the reasons and ways an exhibition is presented.
- 1.5.12prof.Re8a: Interpret an artwork or collection of works, supported by relevant and sufficient evidence found in the work and its various contexts.

**Congratulations and thank you to the
Student Artists. We are proud of you!**

**Thank you to our entertainment,
provided by our students “Blizz” and “Kapo Bandz”.**

**Thank you to the Twilight U Staff,
Teachers and Administration!**

**Shout out to Dr. Stewart, Mr. Harp, Ms. Frazier,
Mrs. Tanner, Ms. Denis, Ms. Holmes, Mr. Meredith,
Ms. Whitley, Dr. Patterson and Mr. Clerie. This exhibit would not have
happened without your help.**