

# Welcome To Grade 5/Rising 6th Grade Parents' Night

Thurston Middle School  
5/29/24

# The Middle School Team



Nicole Haberman  
Assistant Principal



Michael Redmon  
Principal



Erin Banty  
Dean of Students

# The Middle School Team



Dee Graichen  
Student Services Department Head



Nick Pfeifer



Katie Clarke  
Math/Science Department Head



Katherine Stewart  
Humanities Department Head



Robin Bova  
6 Red Team Leader



Lisa Yetman  
6 Blue Team Leader

# Your Middle School Memories

Turn to someone seated near you:

1. Introduce yourself
2. Share a memory from your own middle school experience

# Middle School Development

Who Am I?

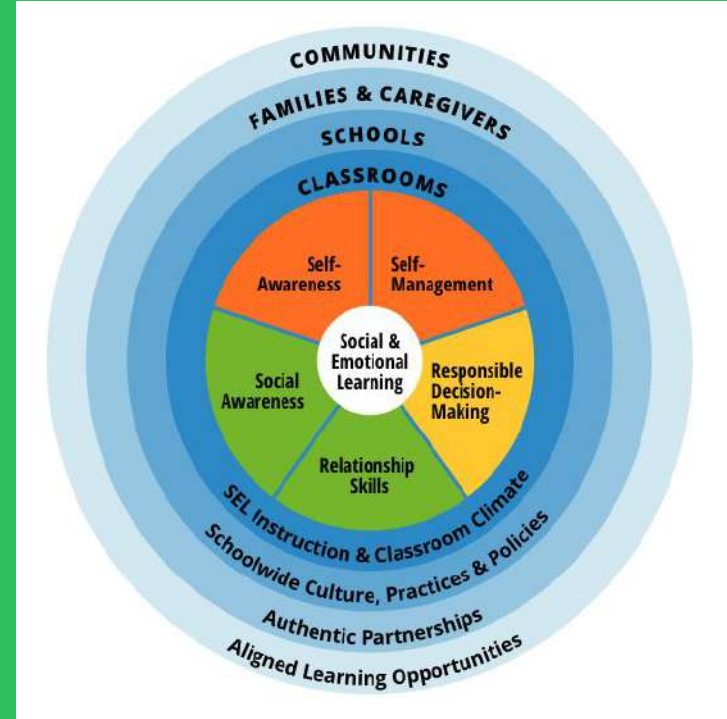
Where Do I Belong?

Who Do I Fit In With?

What Is Happening To My Body?

Where Is My Homework?

Why Should I Listen To You?



# Middle School Bell Schedule

## Regular School Day

7:45 AM - 2:22 PM

Grade 6		Grade 7		Grade 8	
7:30-7:40	Arrival/Grab & Go Breakfast (10)				
7:40-7:45	Transition to Advisory Classes (5)				
7:45-8:00	ADVISORY (15)				
8:00-9:00	CORE CLASS (60)	8:00-9:00	CORE CLASS (60)	8:00-9:00	CORE CLASS (60)
9:00-10:00	CORE CLASS (60)	9:00-10:15 (75)	EXPLORATORIES 9:00-9:37 (37) 9:38-10:15 (37)	9:00-10:00	CORE CLASS (60)
10:00-11:00	CORE CLASS (60)	10:15-11:15	CORE CLASS (60)	10:00-10:40	W.I.N (40)
11:00-11:40	W.I.N. (40)	11:15-12:15	CORE CLASS (60)	10:40-11:55 (75)	EXPLORATORIES 10:40-11:17 (37) 11:18-11:55 (37)
11:40-12:10	LUNCH (30) Recess - 11:40-11:55 Lunch 11:55 - 12:10	12:15-12:45	LUNCH (30) Recess - 12:15-12:30 Lunch 12:30-12:45	11:55-12:25	LUNCH (30) Recess - 11:55-12:10 Lunch 12:10-12:25
12:10-1:07	CORE CLASS (57)	12:45 - 1:42	CORE CLASS (57)	12:25-1:25	CORE CLASS (60)
1:07-2:22 (75)	EXPLORATORIES 1:07-1:44 (37) 1:45-2:22 (37)	1:42-2:22	W.I.N. (40)	1:25 - 2:22	CORE CLASS (57)

# Middle School Bell Schedule

Early Release  
7:45 AM - 1:10 PM

Grade 6		Grade 7		Grade 8	
7:30-7:40	Arrival/Grab & Go Breakfast (10)				
7:40-7:45	Transition to Advisory Classes (5)				
7:45-8:15	ADVISORY (30)				
8:15-8:55	CORE CLASS (40)	8:15-9:15 (60)	EXPLORATORIES 8:15-8:45 (30) 8:45-9:15 (30)	8:15-8:55	CORE CLASS (40)
8:55-9:35	CORE CLASS (40)	9:15-9:55	CORE CLASS (40)	8:55-9:35	CORE CLASS (40)
9:35-10:15	CORE CLASS (40)	9:55-10:35	CORE CLASS (40)	9:35-10:15	CORE CLASS (40)
10:15-11:00	W.I.N. (45)	10:35-11:15	CORE CLASS (40)	10:15-11:15 (60)	EXPLORATORIES 10:15-10:45 (30) 10:45-11:15 (30)
11:00-11:30	LUNCH (30) Recess - 11:00-11:15 Lunch 11:15 - 11:30	11:15-11:45	LUNCH (30) Recess - 11:15-11:30 Lunch 11:30-11:45	11:15-11:55	W.I.N. (40)
11:30-12:10	CORE CLASS (40)	11:45 - 12:25	CORE CLASS (40)	11:55-12:25	LUNCH (30) Recess - 11:55-12:10 Lunch 12:10-12:25
12:10-1:10 (60)	EXPLORATORIES 12:10-12:40 (30) 12:40-1:10 (30)	12:25-1:10	W.I.N. (45)	12:25 - 1:10	CORE CLASS (45)



# Middle School Individual Schedule

1 - Day 1	2 - Day 2	3 - Day 3	4 - Day 4	5 - Day 5	6 - Day 6	7 - Day 7	8 - Day 8	9 - Day 9	10 - Day 10
ADV6-012 Advisory - GR 6 Bova, R; Warble, M 117 A	ADV6-012 Advisory - GR 6 Bova, R; Warble, M 117 A	ADV6-012 Advisory - GR 6 Bova, R; Warble, M 117 A	ADV6-012 Advisory - GR 6 Bova, R; Warble, M 117 A	ADV6-012 Advisory - GR 6 Bova, R; Warble, M 117 A	ADV6-012 Advisory - GR 6 Bova, R; Warble, M 117 A	ADV6-012 Advisory - GR 6 Bova, R; Warble, M 117 A	ADV6-012 Advisory - GR 6 Bova, R; Warble, M 117 A	ADV6-012 Advisory - GR 6 Bova, R; Warble, M 117 A	ADV6-012 Advisory - GR 6 Bova, R; Warble, M 117 A
SSU6-008 SOCIAL STUDIES 6 Bova, R; Robbins, D 117 B	CACE6-008 CULINARY ARTS & CONSUMER EDUCATION 6 Wyatt, Rebecca 105 E	LGA6-009 LANG ARTS 6 Kalman, Abbey 120 C	MA62-005 MATH 6 Cormier, E; Palermo, J 118 F	SCU6-009 SCIENCE 6 Rubino, Jessica 119 D	SSU6-008 SOCIAL STUDIES 6 Bova, R; Robbins, D 117 B	CACE6-008 CULINARY ARTS & CONSUMER EDUCATION 6 Wyatt, Rebecca 105 E	LGA6-009 LANG ARTS 6 Kalman, Abbey 120 C	MA62-005 MATH 6 Cormier, E; Palermo, J 118 F	SCU6-009 SCIENCE 6 Rubino, Jessica 119 D
LGA6-009 LANG ARTS 6 Kalman, Abbey 120 C	MA62-005 MATH 6 Cormier, E; Palermo, J 118 F	SCU6-009 SCIENCE 6 Rubino, Jessica 119 D	SSU6-008 SOCIAL STUDIES 6 Bova, R; Robbins, D 117 B	CACE6-008 CULINARY ARTS & CONSUMER EDUCATION 6 Wyatt, Rebecca 105 E	LGA6-009 LANG ARTS 6 Kalman, Abbey 120 C	MA62-005 MATH 6 Cormier, E; Palermo, J 118 F	SCU6-009 SCIENCE 6 Rubino, Jessica 119 D	SSU6-008 SOCIAL STUDIES 6 Bova, R; Robbins, D 117 B	CACE6-008 CULINARY ARTS & CONSUMER EDUCATION 6 Wyatt, Rebecca 105 E
SCU6-009 SCIENCE 6 Rubino, Jessica 119 D	SSU6-008 SOCIAL STUDIES 6 Bova, R; Robbins, D 117 B	CACE6-008 CULINARY ARTS & CONSUMER EDUCATION 6 Wyatt, Rebecca 105 E	LGA6-009 LANG ARTS 6 Kalman, Abbey 120 C	MA62-005 MATH 6 Cormier, E; Palermo, J 118 F	SCU6-009 SCIENCE 6 Rubino, Jessica 119 D	SSU6-008 SOCIAL STUDIES 6 Bova, R; Robbins, D 117 B	CACE6-008 CULINARY ARTS & CONSUMER EDUCATION 6 Wyatt, Rebecca 105 E	LGA6-009 LANG ARTS 6 Kalman, Abbey 120 C	MA62-005 MATH 6 Cormier, E; Palermo, J 118 F
WIN 6-012 WIN - GR 6 Bova, Robin 117 Win	WIN 6-012 WIN - GR 6 Bova, Robin 117 Win	WIN 6-012 WIN - GR 6 Bova, Robin 117 Win	WIN 6-012 WIN - GR 6 Bova, Robin 117 Win	WIN 6-012 WIN - GR 6 Bova, Robin 117 Win	WIN 6-012 WIN - GR 6 Bova, Robin 117 Win	WIN 6-012 WIN - GR 6 Bova, Robin 117 Win	WIN 6-012 WIN - GR 6 Bova, Robin 117 Win	WIN 6-012 WIN - GR 6 Bova, Robin 117 Win	WIN 6-012 WIN - GR 6 Bova, Robin 117 Win
L	L	L	L	L	L	L	L	L	L
BND6-001 BAND 6 Sanders, Allison BAND ROOM X1	EG6-008 ENGINEERING 6 DeLello, Michael ENG	BND6-001 BAND 6 Sanders, Allison BAND ROOM X1	EG6-008 ENGINEERING 6 DeLello, Michael ENG	BND6-001 BAND 6 Sanders, Allison BAND ROOM X1	EG6-008 ENGINEERING 6 DeLello, Michael ENG	BND6-001 BAND 6 Sanders, Allison BAND ROOM X1	EG6-008 ENGINEERING 6 DeLello, Michael ENG	BND6-001 BAND 6 Sanders, Allison BAND ROOM X1	EG6-008 ENGINEERING 6 DeLello, Michael ENG
PED6-007 PHYS ED 6 Tornatore, Ariana GYM X2	X1/X2	PED6-007 PHYS ED 6 Tornatore, Ariana GYM X2	X1/X2	PED6-007 PHYS ED 6 Tornatore, Ariana GYM X2	X1/X2	PED6-007 PHYS ED 6 Tornatore, Ariana GYM X2	X1/X2	PED6-007 PHYS ED 6 Tornatore, Ariana GYM X2	X1/X2



# TMS Team Structure

## Red Team

ELA Teacher  
Math Teacher  
Science Teacher  
Social Studies Teacher  
Special Education Teacher

Guidance Counselor  
Mr. Austin Bushey



## Blue Team

ELA Teacher  
Math Teacher  
Science Teacher  
Social Studies Teacher  
Special Education Teacher

CACE Teacher  
Health Teacher

# TMS Grade 6

## Core Content Program of Studies

### Full-Year Classes (2 Semesters)

- ELA
- Math
- Social Studies
- Science

### Half-Year Classes (1 Semester)

- Health
- Culinary Arts Consumer Education (CACE)

# TMS Grade 6

## Rotating Arts/Exploratory Program of Studies

### Full-Year Classes (Meet Every Other Day)

- Physical Education (PE)
- Music
  - Orchestra
  - Band
  - Chorus
  - General Music

### Rotating Arts (approximately 30 days)

- Art 1
- Art 2
- Drama 1
- Drama 2
- Computer Science
- Engineering

## **COMPUTER SCIENCE 6**

- ★ Online Safety
- ★ Privacy
- ★ Licensing
- ★ python

# Computer Science & Engineering

## **ENGINEERING 6**

- ★ EDP
- ★ Hand Tools
- ★ Power Tools
- ★ Materials



- TMS Students participate in an engineering course in grades 6-8 as part of the exploratory program.
- Students will be given design tasks and real world problems that challenges them to explore various topics.
- The engineering lab has a variety of hand and power tools that students will learn how to safely and accurately use to design and build models.

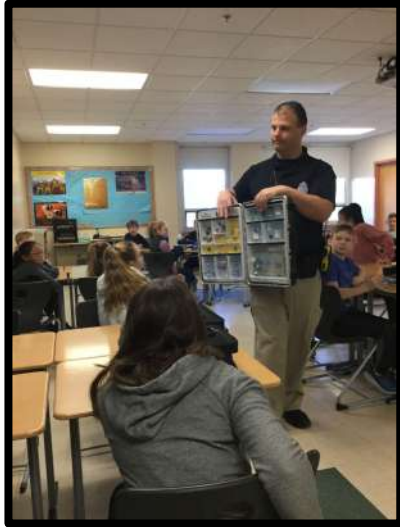


# Wellness Department

*Health, C.A.C.E. & Physical Education*

*We strive to:*

- Foster a sense of community.
- Help students reach a level of success, regardless of ability level.
- Build confidence.
- Develop social-emotional skills in small groups and team situations.
- Promote healthy habits.



# Art Department

## Art Class in Grades 6, 7, and 8

## Exploration

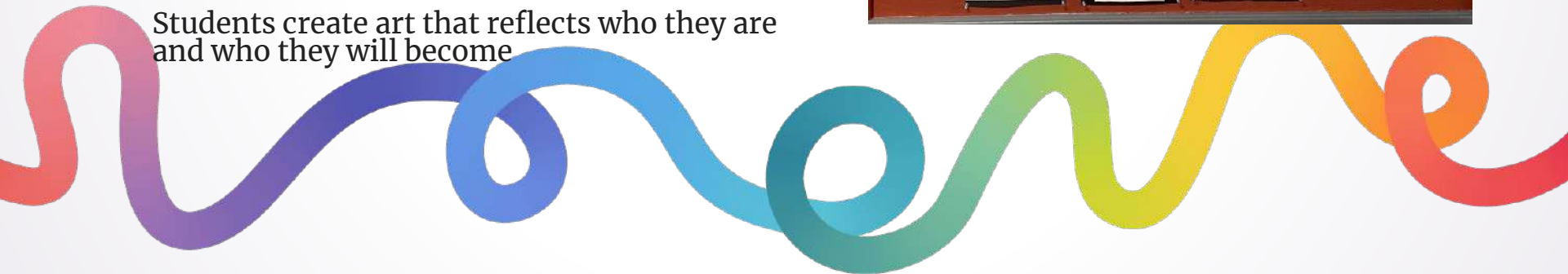
## Students experiment with new materials and processes

## Observation

## Students learn to slow down and look closely at the world around them

## Self-Expression

Students create art that reflects who they are and who they will become





# World Language Department

*We study Spanish or French,  
take steps to share who we are,  
and engage in the world  
around us to become global  
citizens*

## 9th grade

Continue Spanish/French, or add Latin or Mandarin

## 8th grade

Develop your foreign language – French or Spanish

## 7th grade

Begin your foreign language – French or Spanish

## At the end of 6th grade

Choose your foreign language – French or Spanish

**ciao!**

مرحبا

**Hallo!**

**Salut!**

**Olá!**

**Hi!**

您好



# Drama Department



*The drama program at TMS works to foster creativity while building a fun and dynamic community.*

Silent Movie  
Tableau  
Structure of a Scene  
Theatre Current Events  
Greek theatre

6th Grade Play  
7th and 8th Grade Musical  
7th Grade Field Trip  
Improv  
Games  
Audience Skills



# Music Department

*Orchestra, Band, Chorus, General Music*

THE THURSTON MIDDLE SCHOOL MUSIC DEPARTMENT STRIVES TO  
CREATE AN ENVIRONMENT THAT GIVES STUDENTS A SENSE OF  
BELONGING AND PROVIDES THEM WITH THE TOOLS TO EXPRESS  
THEMSELVES ARTISTICALLY THROUGH THE COMMUNAL ACTIVITY OF  
MUSIC MAKING.



WINTER CONCERT  
JUNIOR DISTRICT FESTIVAL  
SPRING CONCERT  
JAZZ NIGHT  
GREAT EAST FESTIVAL





# Student Services At TMS



School Nurse  
Ms. Marianne Baker

## Counseling



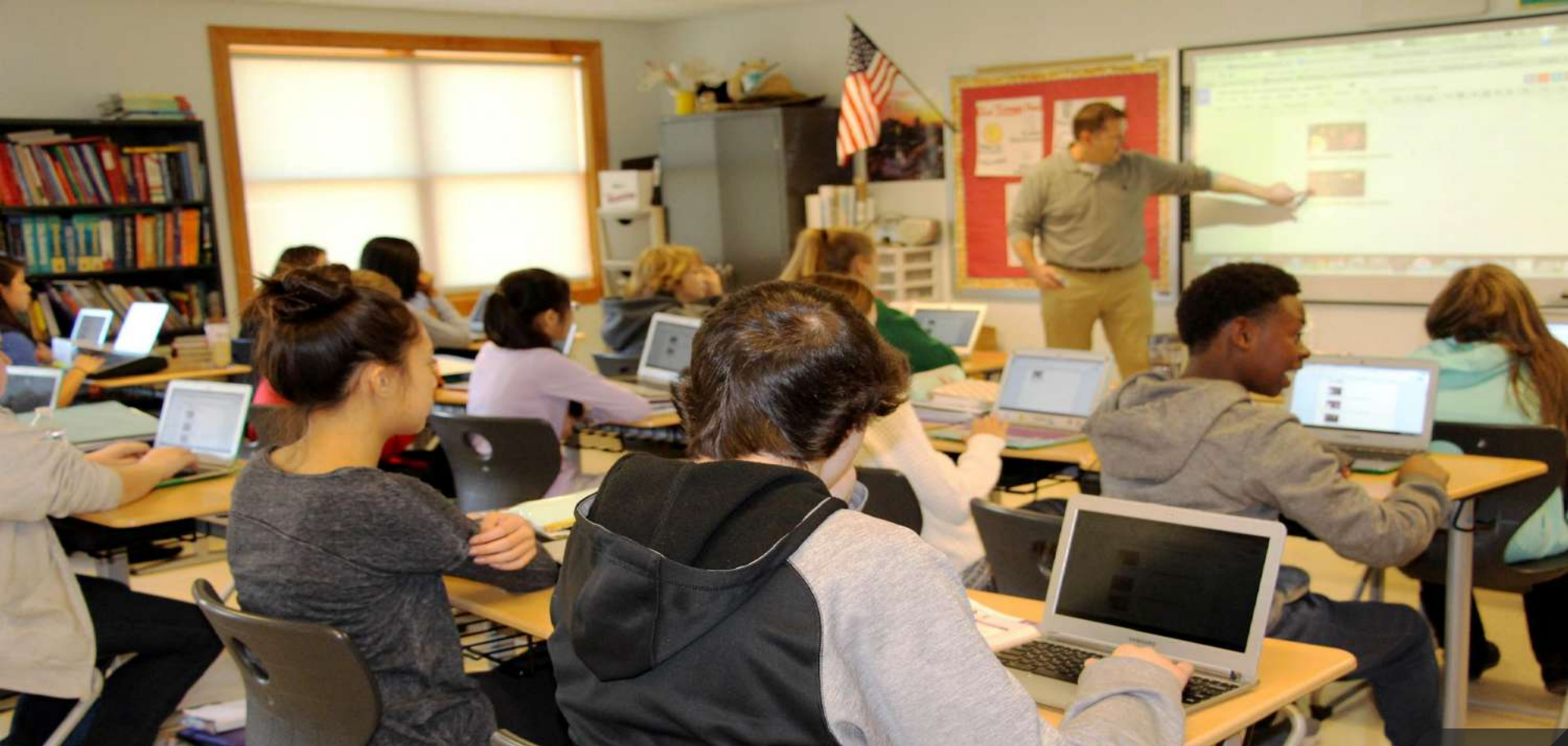
Special Education

## ELL



## Related Services Therapies (S&L, OT, PT, Vision, APE)





1-1 COMPUTING Parent orientation  
STEVE OUELLETTE

# SHIFT FROM Teacher-centered TO STUDENT-centered

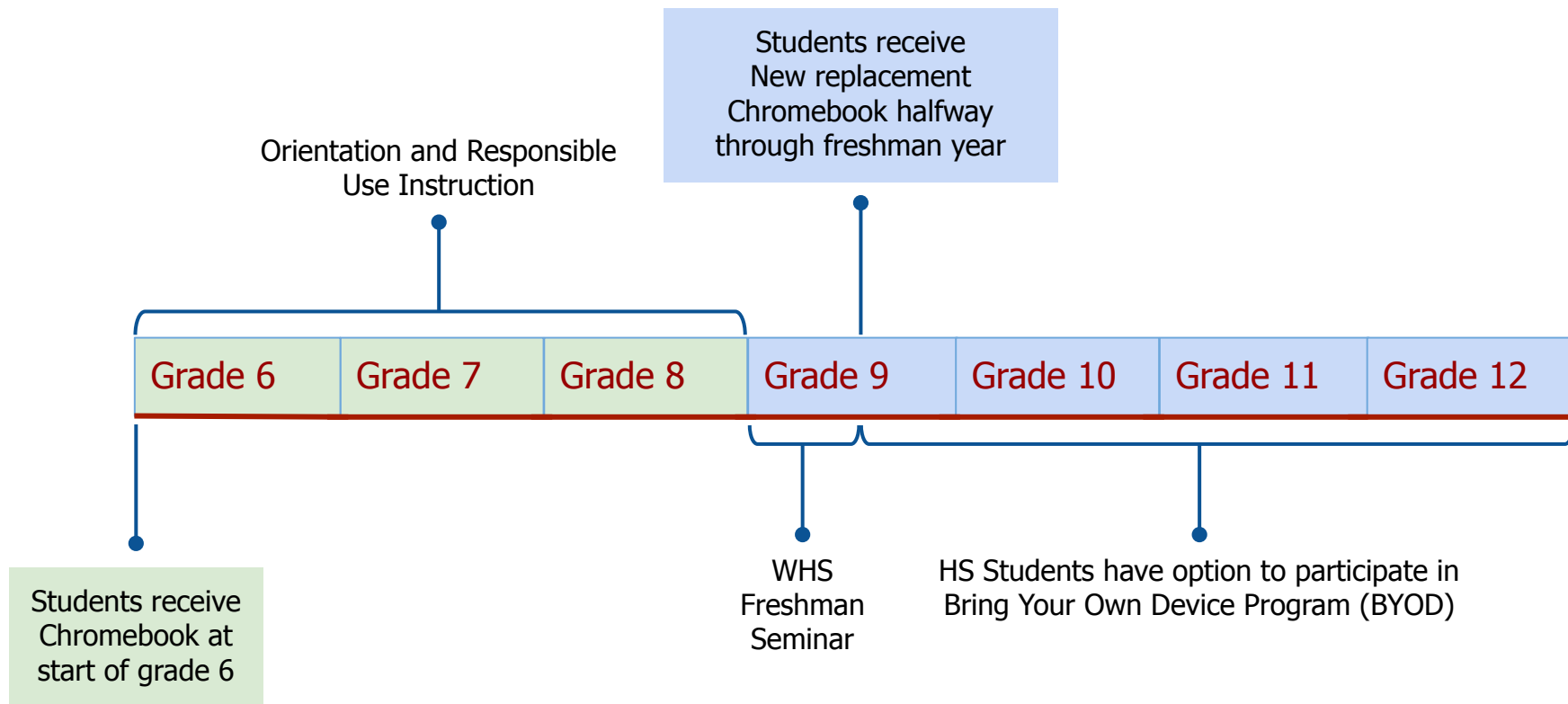
Traditional Instruction: The teacher finds, packages, and delivers content to students.

Contemporary Instruction: Students are asked a question and use available resources to research, define, and construct knowledge.

- Fosters student agency/independence
- Much higher retention rates
- Promotes critical thinking, problem solving skills



# WESTWOOD'S 1-1 CHROMEBOOK TAKE HOME PROGRAM



# TIMELINE & LOGISTICS

## Mailing (and/or email) in mid-August

- Chromebook Loan Agreement - Mail back to TMS or your child can bring it to homeroom on first day of school

## First week of school

- Chromebooks and cases distributed in homerooms (assuming signed loan agreement has been returned)

## Email from Steve Ouellette in mid-August (sent to primary contact in Aspen)

- Registration link for optional accidental insurance
- Registration link for access to Deledao parent portal

# OPTIONAL Insurance

We've got this covered

## Manufacturer Defects



- Battery failure
- The 'P' key suddenly stops working
- Pretty much anything not related to physical damage resulting from drops, spills, etc...



You've got this covered

## Accidental Damage



- Anything related to physical damage resulting from drops, spills, etc...
  - Theft but not loss
- \$30/year, unlimited claims & no deductibles
  - Insurance follows the student, not the device.

# deledao: our CHROMEBOOK FILTERING SOLUTION

deledao



# "RESPONSIBLE USE" OF TECH

## 1. **Be Focused**

Chromebooks are for schoolwork *only*!

## 2. **Be Protective**

Take care of your Chromebook!

## 3. **Be Healthy**

Stay balanced and safe online

# caring for your CHROMEBOOK

## Habit 1: Protective placement

- Securely on a desk or table
- Consider foot traffic





# caring for your CHROMEBOOK

## Habit 2: Utilize the Chromebook case



# caring for your CHROMEBOOK

## Habit 3: Strategic “Charging Station”



(Ideally, not in the bedroom)



# STAYING BALANCED and safe

- **2nd Grade:** Internet safety education
- **5th Grade:** End-of-year responsible use unit
- **6th Grade**
  - Multiple units in Health and Wellness class
  - Dedicated WIN and Advisory sessions
- **9th Grade:** Digital Citizenship Seminar
  - Once per 8-day cycle during the fall semester

# KIDS and CELL PHONES

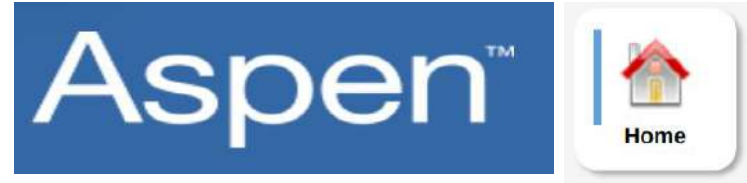
My kid wants a phone...

---

# online Grades



- Daily assignments and activities
- Grades posted frequently
- Guardian Summary emails (optional)



- Report Cards
- Progress Reports
- Grades posted by unit (for most teachers)





**QUESTIONS?**

[tinyurl.com/tmsparents](https://tinyurl.com/tmsparents)  
[souellette@westwood.k12.ma.us](mailto:souellette@westwood.k12.ma.us)

# Handbook Highlights

- Drop Off and Pick Up
- Cell Phones
  - If the device is audible, visible or in use outside of designated classes, or if it is being used inappropriately (e.g., for game playing instead of reading), it will be confiscated by a teacher and turned in to the office. A parent/guardian will be contacted to retrieve the item. If a student has had a personal device confiscated more than once, he or she will be required to complete an after-school detention as well.
- Dress Code
  - Two of the core purposes of the Westwood Public Schools are academic excellence and promoting respectful and caring relationships. To that end, we expect students to refrain from wearing clothing that is disruptive to the educational process, poses safety concerns, and/or interferes with an individual's right to learn in a harassment-free environment.
- Behavior Violations, Bullying, Harassment

# After School Clubs/Activities

- Tuesday/Thursday
  - Start Late September/Early October
  - 2:25 PM - 3:25 PM
  - Late Bus (3:30 PM Departure)
  - Sample Offerings
    - Chefs Club
    - Board Games
    - Creative Writing
    - Homework Club
    - Open Gym
    - Unity Club

# Middle School Sports

## Fall

- Football (Grade 7 & 8 Only)
- Girls Field Hockey
- Girls Volleyball
- Cross Country

## Spring

- Track

Special Olympics - New and Expanding

*All athletic programs are run by the Athletic Department*

*Matt Gillis Westwood Athletic Director*

# Westwood METCO Program

**All Westwood Public School Students are METCO Students**

Westwood has been a METCO District since 1968

Historically Boston students started in 6th Grade

Elementary School Expansion 2022  
Enrolling in Grades  
Kindergarten - Grade 5

Ways of getting involved:

- Westwood METCO Welcome Club
  - Family Matching
  - Volunteer
  - Donate



# Summer Reading/Math

**Book #1:  
Community Text**



*Lifeboat 12*  
by Susan Hood

**Book #2:  
Student's Choice!**



Students read a book of  
their choice. We'll share a  
list from WPL if you need  
a place to start!

**Option 1: IXL**



**Option 2: Summer Math Workbook**







# GET TO KNOW THE THURSTON PTO

## The Thurston PTO Mission:

Celebrate our teachers, connect our families, and support enrichment for every student at Thurston.

## SEVERAL COMMITTEES AND AN EXECUTIVE BOARD CARRY OUT THE PTO MISSION.

### Apparel Sales

Show your Westwood Pride and support Thurston!

### Site Council

Teachers, parents, and students share feedback with school leadership.

### Teacher Appreciation

We show our teachers the love with seasonal gifts, snacks, and a whole week of celebration in the spring.

### SEPAC Liaison

Works for the understanding of and support of children of all abilities.

### Community Enrichment

Organizes student clubs, family events, parent workshops, and more!

### DEI Liaison

Supports school-level and district-wide efforts for inclusion and representation.

### Friday Night Fun Committee

Carry on this tradition and promote safe, positive social events for each grade.

### Volunteer Opportunities

Get to know your school, teachers, and the community by volunteering.

### 8th Grade Events

Before they leave for WHS, let's celebrate our graduating 8th graders!

We're looking for help with the following:

- Community enrichment
- Chaperoning events
- ... and more!

### Fundraising Committee

Brainstorm clever ways to raise money for TMS!

### Welcome Club Liaison

Connects those new to Westwood, including families in the METCO program, with current families to build community.

Join our PTO Facebook Group!  
Stay connected & get involved!



*Pollinator Garden*

*Speakers/Guests*

*Teacher  
Appreciation Week  
& Snack Cart*

**What can you do?**

- Get involved
- Submit your suggested donation

*Financial Aid for  
Field Trips*

*New Sports  
Equipment*

*Friday Night Fun is  
back!*

*8th Grade Social &  
Field Day ice  
cream truck*

*Spring Musical  
Cast Party*

*7th Grade Writers  
Conference Book*

Got Questions? Ready to help? email us: [ThurstonMiddleSchoolPTO@gmail.com](mailto:ThurstonMiddleSchoolPTO@gmail.com)

# Important Dates

Thursday, August 22nd from 9:00 AM - 1:00 PM, TMS will be open prior to the start of the first day of school for students to practice opening lockers and walking their schedules. For this day, transportation will be provided to and from TMS to all new to Westwood Boston students.

Student schedules and Team assignments will be released on Friday, August 16th after 3:00 PM.