

Rockford High School - IB World School

Course Registration Guide

2024-2025





Welcome to 2024-2025 Rockford High School Course Registration

Rockford High School

7600 County Road 50
Rockford, MN 55373
763-477-5846
Fax 763-477-6123

Administration

Superintendent

Dr. Jeff Ridlehoover
Ridlehooverj@rockford.k12.mn.us

High School Principal

Paul Menard
Menardp@rockford.k12.mn.us

School Counselors

Samantha Bloom
Blooms@rockford.k12.mn.us

Ellie Engstrom

Engstromel@rockford.k12.mn.us

International Baccalaureate Coordinator

Jill Gordee
Gordeej@rockford.k12.mn.us

Special Education Coordinator

Emily Seitzer
Eseitzer@mawseco.k12.mn.us

Federal and state laws prohibit discrimination in education based on sex, gender identity, sexual orientation, race, color, creed, national origin, religion, disability, receipt of public assistance, or marital status and age.

Dear Rockford High School Students and Parents:

Our course registration guide is a tool for families to plan for the next school year and beyond. The Rockford High School registration process begins in eighth grade and prepares students to graduate with the skills they need to succeed in achieving their post-secondary goals.

Rockford High School is authorized as an International Baccalaureate (IB) World School. We offer courses in the Middle Years Programme (MYP) for all 9th and 10th grade students. Additionally, 11th & 12th grade students can select courses in the Diploma Programme (DP) and the Career-Related Programme (CP). DP courses help prepare students for college, offer competitive advantages when applying for admission to universities, and give students access to earn college credit at over 3,000 institutions of higher education. The implementation of IB at Rockford High School has allowed us to give our students a world-class educational experience, inquiry-based and relevant curriculum, and a 1:1 technology program.

Students have several options upon graduation, including attendance at a two or four-year college or university, vocational training, military service, or entering into the workforce. Rockford currently offers 4 career pathways in Vet Assistant, Landscape Design, Business and CNA. Regardless of which path a student chooses, the process of preparation begins with course registration. As you are choosing courses, please center your thoughts around two critical questions:

- 1) What are the courses that I ***need*** to take in order to ensure that I meet the graduation requirements for my graduation class?
- 2) What are the courses that I ***should*** take in order to best prepare me to achieve the goals and dreams that I have for myself and my life after I leave Rockford High School?

Course planning is truly a team effort that involves parents, guardians, students and staff. The faculty and staff at Rockford High School look forward to assisting our students in their efforts to select the classes that will best support their academic goals. We feel that planning carefully now will serve students well in their future years at Rockford High School and in their post-secondary life.

Thank you for choosing Rockford High School, and we look forward to assisting you in making good academic decisions that will set you on a path for future success.

Rockford High School Administration

Table of Contents

How to Use This Guide

Terminology and Definitions

This Course Registration Guide is designed to help you and your parents/ guardians select your courses for next school year. We use registration data to build our master schedule and hire and assign teachers. The guide explains which courses you need for graduation and when you need to take them. It will also help you choose courses to meet your post high school goals whether its further education, working or the military.

Prerequisite Course

Courses that students must pass before registering for another course or the next course in the sequence.

Required Course

Courses that every student must pass in order to graduate from Rockford High School.

Elective Course

Courses that students choose to take to fulfill the graduation requirements.

Co-Seated Course

Courses where students learn material for both the high school level course and the college level course. Many IB courses are co-seated with CIS courses– see pg 15 for a course list.

International Baccalaureate Diploma Programme

International Baccalaureate (IB) Diploma Programme is a rigorous, internationally-recognized program for 11th and 12th grade students. Students may earn college credit based on their scores from IB assessments.

DP SL Course: Diploma Programme Standard Level

These courses require 150 hours of instruction and may be a one or two year course. An exam at the end of year 1 OR year 2 will determine college credit.

DP HL Course: Diploma Programme Higher Level

These are college level courses that require 240 hours of instruction. These are two year courses. An exam at the end of year 2 determines college credit.

Career Related Pathway

Designed for students interested in pursuing a career-related education. It provides them with an excellent foundation to support further studies and ensure their preparedness for the workforce.

| | |
|----|---|
| 4 | Online Student Course Selection Instructions |
| 5 | Minnesota Department of Education Graduation Requirements |
| 6 | Rockford High School Graduation Requirements |
| 7 | NCAA Requirements |
| 9 | Minnesota Career Fields |
| 11 | International Baccalaureate World School Program |
| 12 | Course Sequencing |
| 15 | College Credit Opportunities |
| 17 | RHS Courses and Descriptions |
| 36 | 2024-25 Course Registration Overview |

Online Course Selection for 2024-25 School Year

The Infinite Campus registration portal will be open from December 8 – December 22, 2023. Students may select their courses online for 2024-25 following the directions using the link below. For students who need assistance or do not have access to a computer at home, members of the Rockford High School guidance staff will be available on select days to assist them. Using the Academic Planning tool, students are able to view and plan courses for all years.

Online Student Course Selection Instructions



- 1) Go to the district website at www.rockford.k12.mn.us.
- 2) Click on the Infinite Campus Portal icon
- 3) Login using the student's Username and Password (use your school password)
- 4) Use the QR Code below for a link to the registration instructions
- 5) Once complete, review your plan with a parent/ legal guardian and check the "Approved by parent/legal guardian" box at the top
- 5) SAVE your course plan
- 6) Remember to logout when finished

****Your course choices matter. We are basing our schedule on student demand. Courses that do not have enough interest will not be offered during the 2024-25 school year.***

Class Change Requests

Students are encouraged to plan programs carefully. Once the registration process is complete, class change requests are discouraged, and in some cases, not possible after the initial registration.





Minnesota Department of Education Graduation Requirements

Students complete the academic standards by taking a course of study that equips them with the knowledge and skills they need for postsecondary education, highly skilled work, and civic life. In order to graduate, your child's high school coursework must include at minimum state credit requirements. A credit is equivalent to a student successfully completing an academic year of study or mastery of subject matter, as determined by the local school district. Students must complete a minimum of 21.5 course credits as follows:

- **4 credits of language arts**, sufficient to satisfy all of the academic standards in English language arts
- **3 credits of mathematics**, encompassing Algebra II, Integrated Mathematics III, or an equivalent in high school as defined by the high school math standards. Grade 8 students must complete Algebra as defined by the Minnesota Math Standards.
- **3 credits of science**, including one credit to satisfy all the earth and space science standards for grades 9 through 12, one credit to satisfy all the life science standards for grades 9 through 12, and one credit to satisfy all the chemistry or physics standards for grades 9 through 12.
- **3½ credits of social studies**, including credit for a course in government and citizenship in either grade 11 or 12 for students beginning grade 9 in the 2024-2025 school year and later or an advanced placement, international baccalaureate, or other rigorous course on government and citizenship, and a combination of other credits encompassing at least United States history, geography, government and citizenship, world history, and economics sufficient to satisfy all of the academic standards in social studies.
- **1 credit in the arts**
- **Physical Education, credit is determined at the local level.** Credits sufficient to satisfy the state standards in physical education;
- **Health Education, credit is determined at the local level.** Must meet locally developed standard requirements.
- **7 elective credits**

Students who begin grade 9 in the 2024-25 school year and later must successfully complete a course for credit in personal finance in grade 10, 11, or 12.

An agriculture course may fulfill a general science credit requirement. A CTE course may fulfill a general science, mathematics, or arts credit requirement. School districts may require additional course credits or other requirements for graduation beyond the minimum required by the state.

Rockford High School Graduation Requirements

| Required Areas of Study | Credits Class of 2028 | Credits Class of 2024- 2027 |
|---|--------------------------|-----------------------------------|
| English | 8 | 8 |
| Social Studies | 7 | 7 |
| Math (All students must complete Algebra II) | 6 | 6 |
| Science (All students must complete Chemistry or Physics) | 6 | 6 |
| Physical Education | 1 | 1 |
| Health | 1 | 1 |
| Fine Arts | 2 | 2 |
| Career & Technical | 1 | 1 |
| Personal Finance | 1 | 0 |
| Electives | 17 | 18 |
| TOTAL | 50 | 50 |

MONITOR YOUR CREDITS: *It is the student's responsibility to monitor their credits and transcript. If the student is not on track to graduate, they jeopardize participating in the graduation ceremony.*

COMMENCEMENT PARTICIPATION: *Students who have not met all the graduation requirements, must be within two (2) credits of the requirements by the end of their senior year and assigned a plan for completion, or be enrolled in summer school, to participate in the graduation ceremony.*

WEIGHTED GRADING: *Additional weight is given for courses where the curriculum is significantly more challenging, such as College in the School (CIS) courses and International Baccalaureate (IB) courses. College courses taken by PSEO students, deemed by Rockford High School to be equivalent to its CIS courses, are eligible for weighted grading, per District Policy 620R. If a student takes a weighted class at Rockford High School, that student cannot receive weighted grading for the equivalent class taken at college. Weighted classes will receive a two grade increment increase. On a 4.0 scale, weighted classes will be given a .66 boost. (Example: 3.0 grade in a weighted class on 4.0 scale becomes 3.66.)*

RECOGNITION: *Valedictorian(s) and Salutatorian(s) will be determined after semester one grades are finalized. Full IB Diploma candidates will be recognized at Senior Awards Night and the graduation ceremony.*

NEW STUDENTS: *Any students who open enroll to Rockford High School will begin coursework at the next marking period.*

Initial-Eligibility Standards

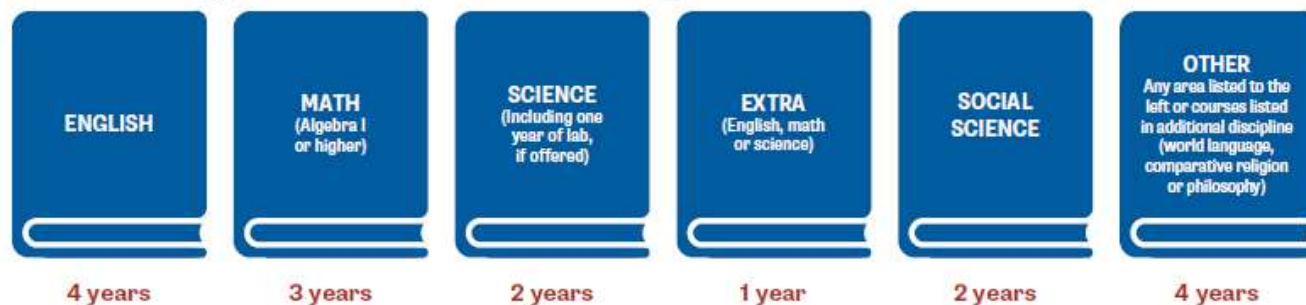
If you want to compete in NCAA sports, you need to register with the NCAA Eligibility Center at eligibilitycenter.org. Plan to register before your freshman year of high school. For more information on registration, visit on.ncaa.com/RegChecklist.

Academic Requirements

Division I and II schools require you to meet academic standards. To be eligible to practice, compete and receive an athletics scholarship in your first year of full-time enrollment, you must meet the following requirements:

Division I

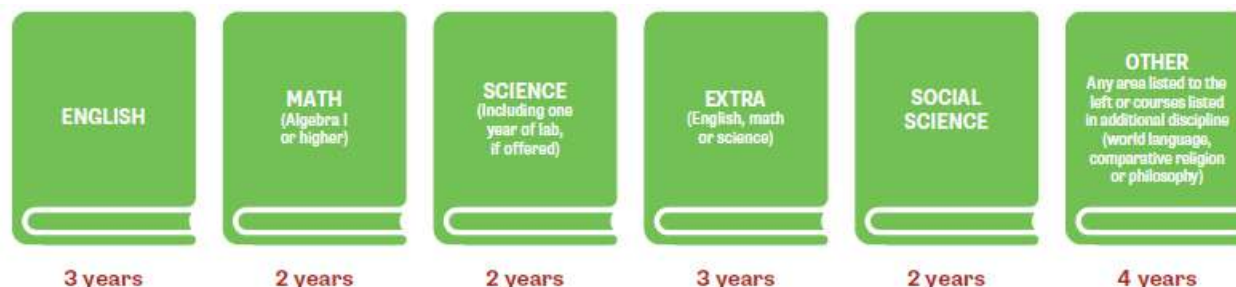
1. Earn 16 NCAA-approved core-course credits in the following areas:



2. Complete your 16 NCAA-approved core-course credits in eight academic semesters or four consecutive academic years from the start of ninth grade. If you graduate from high school early, you still must meet core-course requirements.
3. Complete 10 of your 16 NCAA-approved core-course credits, including seven in English, math or science, before the start of your seventh semester. Once you begin your seventh semester, any course needed to meet the 10/7 requirement cannot be replaced or repeated.
4. Earn a minimum 2.3 [core-course GPA](#).
5. Ask your high school counselor to upload your [final official transcript](#) with proof of graduation to your Eligibility Center account.

Division II

1. Earn 16 NCAA-approved core-course credits in the following areas:



2. Earn a minimum 2.2 [core-course GPA](#).
3. Ask your high school counselor to upload your [final official transcript](#) with proof of graduation to your Eligibility Center account.

Division III

While [Division III schools](#) set their own admissions and academic requirements, [international student-athletes](#) (first-year enrollees and transfers) who are enrolling at a Division III school after Aug. 1, 2023, must be certified as an amateur by the Eligibility Center. Contact the Division III school you plan to attend for more information about its academic requirements.



GRADE

9

REGISTER

- » If you haven't yet, [register](https://eligibilitycenter.org) for a free Profile Page account at eligibilitycenter.org for information on NCAA initial-eligibility requirements.
- » Use NCAA Research's [interactive map](#) to help locate NCAA schools you're interested in attending.
- » Find your high school's list of NCAA-approved core courses at eligibilitycenter.org/courselist to ensure you're taking the right courses, and earn the best grades possible!

GRADE

10

PLAN

- » If you're being actively recruited by an NCAA school and have a Profile Page account, [transition](#) it to the required [certification account](#).
- » Monitor the [task list](#) in your NCAA Eligibility Center account for next steps.
- » At the end of the school year, ask your high school counselor from each school you attend to upload an official transcript to your Eligibility Center account.
- » If you fall behind academically, ask your high school counselor for help finding [approved courses](#) you can take.

GRADE

11

STUDY

- » Ensure your [sports participation](#) information is correct in your Eligibility Center account.
- » Check with your high school counselor to make sure you're on track to complete the required number of NCAA-approved [core courses](#) and graduate on time with your class.
- » Share your [NCAA ID](#) with NCAA schools recruiting you so each school can place you on its [institutional request list](#).
- » At the end of the school year, ask your high school counselor from each school you attend to upload an official transcript to your Eligibility Center account.

GRADE

12

GRADUATE

- » [Request your final amateurism certification](#) beginning April 1 (fall enrollees) or Oct. 1 (winter/spring enrollees) in your Eligibility Center account at eligibilitycenter.org.
- » Apply and be accepted to the NCAA school you plan to attend.
- » Complete your final NCAA-approved [core courses](#) as you prepare for graduation.
- » After you graduate, ask your high school counselor to upload your final [official transcript](#) with proof of graduation to your Eligibility Center account.

How to plan your high school courses to meet the 16 core-course requirement:

4 x 4 = 16

9th GRADE

(1) English
(1) Math
(1) Science
(1) Social Science
and/or other

4 CORE COURSES

10th GRADE

(1) English
(1) Math
(1) Science
(1) Social Science
and/or other

4 CORE COURSES

11th GRADE

(1) English
(1) Math
(1) Science
(1) Social Science
and/or other

4 CORE COURSES

12th GRADE

(1) English
(1) Math
(1) Science
(1) Social Science
and/or other

4 CORE COURSES

CONTACT THE NCAA ELIGIBILITY CENTER

U.S. and Canada (except Quebec):
877-262-1492 (toll free), Monday-Friday
9 a.m. to 5 p.m. Eastern time



[@ncaaec](#) [@ncaaec](#) [@ncaaec](#) [@playcollegesports](#)



ELIGIBILITY CENTER

NCAA is a trademark of the National Collegiate Athletic Association. September 2023.

Minnesota Career Fields, Clusters & Pathways

Thinking ahead and preparing for careers is helpful as students are headed to the workplace or college. As you enter your junior and senior year of high school, it's important to learn more about yourself to be able to choose a career pathway. Where do you see yourself in ten years? The term “career pathway” means a combination of rigorous and high-quality education, training, and other services that:

- Aligns with the skills needed of industries or employers
- Prepares individuals to be successful in any of their chosen education options
- Provides counseling to support an individual's career goals
- Combines education or training alongside soft skills development for a specific occupation or industry
- Helps the individual gain credentials to increase employability
- Encourages training options that will help an individual advance in their specific occupation or industry

This approach makes it simpler for people to earn industry-recognized credentials and marketable skills that make it easier to find work in growing careers. Some careers that are common today many not be needed tomorrow. All careers require flexibility, knowledge and skills.

The Minnesota Career Fields, Clusters & Pathways chart (on the following page) graphically depicts the organizing framework of the foundation knowledge and skills, career fields, career clusters, and career pathways that Minnesota will use for developing programs of study.

Career clusters are one way to group career choices. Careers with common features are in the same cluster. Clusters can be used during career exploration as a way to find your best career match.

Career Clusters (shown on following page):

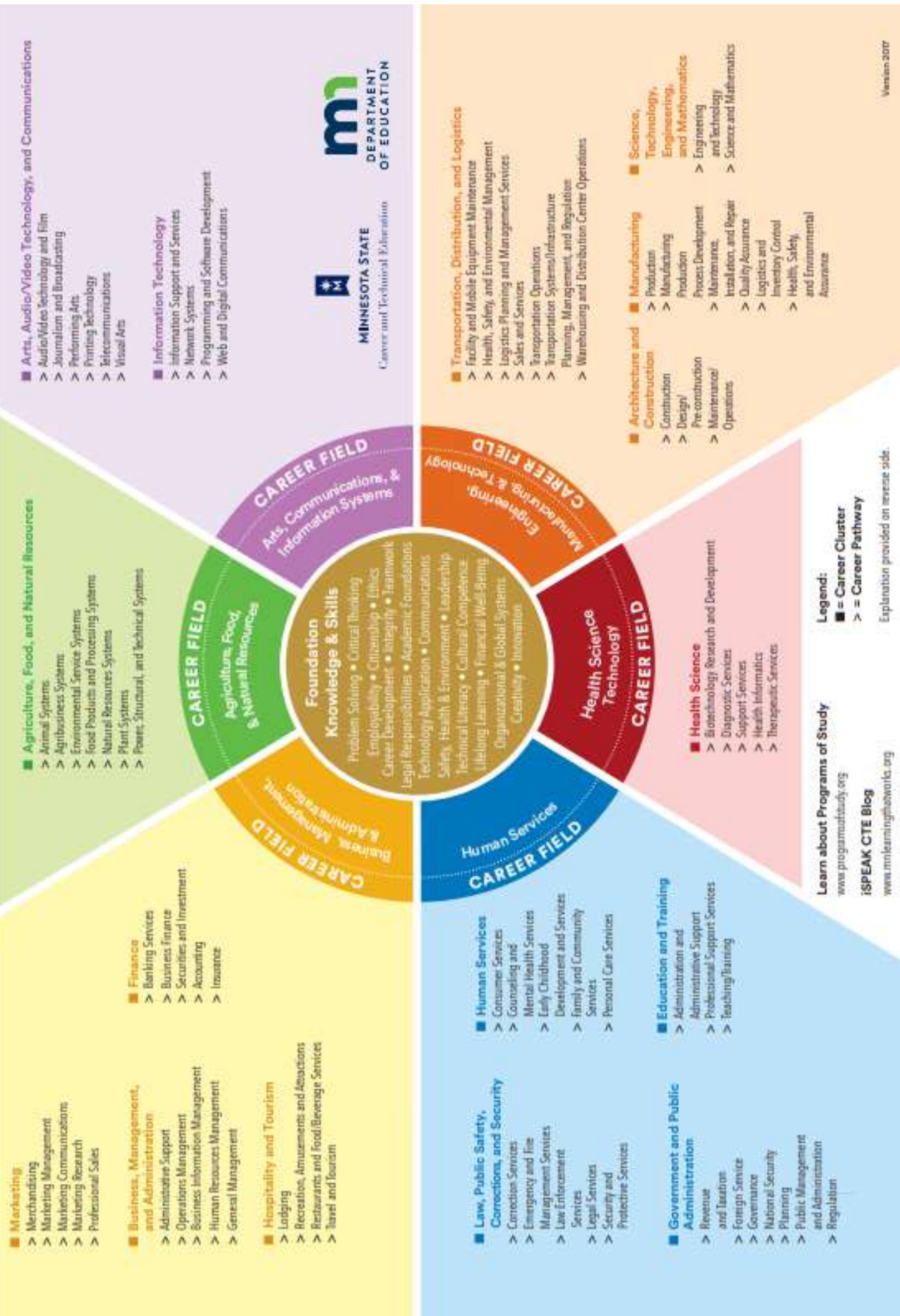
Noted by a block (■) bullet point, represent a grouping of occupations and broad industries into a national classification of 16 clusters that are based upon common knowledge and skills. Career clusters include hundreds of occupations that may be grouped into pathways around which educational programs of study can be built.

Career Pathways (shown on the following page):

Noted by an arrow (>) symbol, represent an organization of related occupational areas within a specific career cluster. Each pathway has identified knowledge and skills validated by industry from which programs and programs of study are developed.



Minnesota Career Fields, Clusters & Pathways





International Baccalaureate

World School

IB MIDDLE YEARS PROGRAMME

MYP prepares students to be successful in school and to be active, lifelong learners.

MYP

IB CAREER-RELATED PROGRAMME

CP prepares students to follow their chosen pathways in life.

CP

IB DIPLOMA PROGRAMME

DP prepares students for success in higher education and to be active participants in a global society.

DP

MYP Middle Years Programme

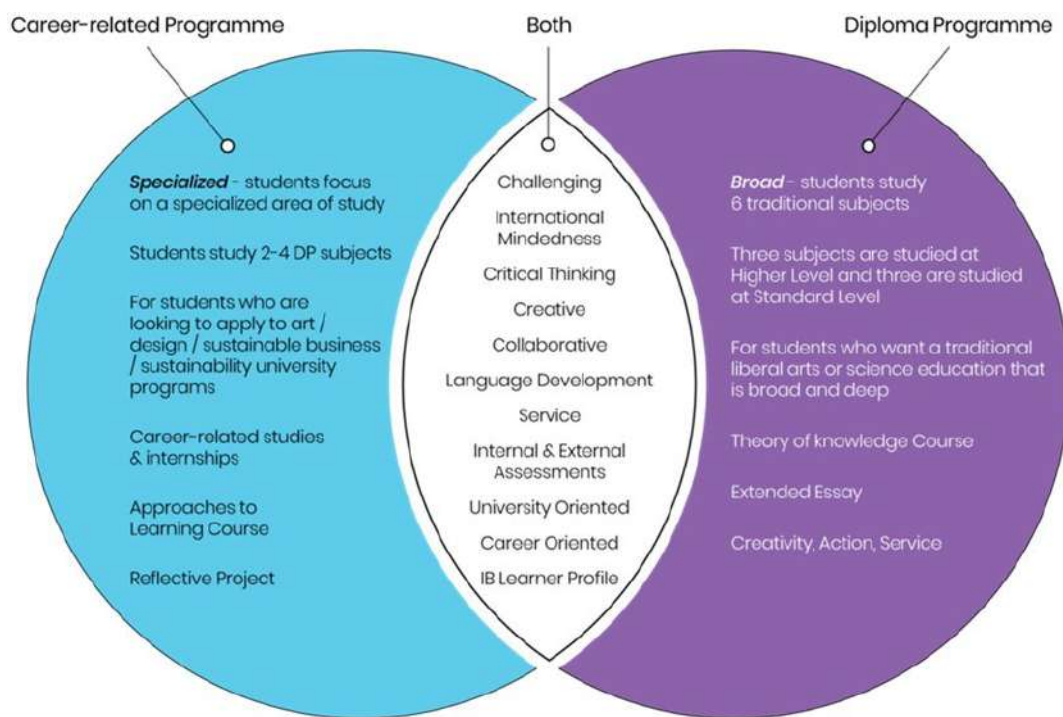
The IB Middle Years Programme, for students ages 11 to 16, provides a framework of concept-based learning and academic challenge that encourages students to embrace and understand the connections between traditional subjects and the real world, and to become critical and reflective thinkers. Students in grades 9-10 will select classes from each of the subject groups. MYP focuses on Approaches to Learning, Service in Action, and culminates with a Personal Project in grade 10.

IB Career-Related Programme (IBCP)

Designed for students interested in pursuing a career-related education. The IB Career-Related Program (IBCP) provides them with an excellent foundation to support their further studies, as well as, ensure their preparedness for success in the workforce.

IB Diploma Programme (IBDP)

The IB Diploma is recognized by colleges and universities around the world as superior education, preparing students to succeed at post-secondary institutions and beyond. Successful full diploma candidates will receive an IB Diploma in addition to the Rockford High School Diploma. Students earning the IB Diploma may receive up to one full year of college credit.





International Baccalaureate

World School I

IB MIDDLE YEARS PROGRAMME

MYP prepares students to be successful in school and to be active, lifelong learners.

MYP

| Subject | Grade 9 |
|--|--|
| Language & Literature | MYP English 9 |
| Individuals & Societies | MYP US History 9 |
| Math | MYP Non-Linear Algebra or MYP Geometry |
| Sciences | MYP Science 9 |
| Arts (Visual and Performing) | 1 elective from list |
| Arts (Visual and Performing) | 1 elective from list |
| Language Acquisition (students pursuing a full IB Diploma must take Spanish I in grade 9) | Spanish I |
| Elective | 2 electives from list |
| | |

| Subject | Grade 10 |
|--|---|
| Language & Literature | MYP English 10 or MYP Honors English 10 |
| Individuals & Societies | MYP World History/ Geography 10 |
| Math | MYP Geometry or Algebra II or Honors Algebra II |
| Sciences | MYP Chemistry 10 or MYP Physics 10 |
| Physical Education | Physical Education or Lifelong Physical Activity |
| Health & Wellness | Health & Wellness |
| Language Acquisition (students pursuing the full IB Diploma must take Spanish II in grade 10) | Spanish II |
| Elective | 2 electives from list |
| | |



Rockford IB Career-Related Programme Pathways

CNA Pathway



Required Classes for CNA Certification

- ◆ Certified Nursing Assistant (CNA)
- ◆ Exam required for Certification

Related Additional Courses (not required):

Health Science Careers Forensic Science
Sports Science Psychology

Vet Assistant Pathway



Required Classes for Vet Assistant Pathway

- ◆ Veterinary Science
- ◆ Companion Animals
- ◆ College Animal Science
- ◆ Practical Experience— Job Shadow, Internship, Volunteer
- ◆ Exam required for Vet Assistant Certificate

Related Additional Courses (not required):

Animal Science

Landscape Design Pathway



Required Classes for Landscape Design Pathway

- ◆ Landscape Design & Construction**

AND Choose **ONE** of the following:

- ◆ Agri-Business or
- ◆ Intro to Horticulture
- ◆ Exam required for NOCTI Certificate in Horticulture/
Landscaping following completion of 2 required courses

Related Additional Courses (not required):

General Construction Intro to Business

Business Career Pathway



Required Classes for Business Pathway

- ◆ Intro To Business**
- ◆ DP Business Management

Related Additional Courses (not required):

Accounting Marketing

** Denotes course eligible for Articulated College Credit—approval pending

**To Achieve the IB Career Programme Certificate for ANY career pathway,
the following requirements must be met in addition to the required pathway course(s):**

- ◆ **Complete 2 DP Courses and Exams—** English, Math, Science, History, Business, Music, Art
- ◆ **Complete Personal & Professional Skills 11—** 11th grade
- ◆ **Complete Personal & Professional Skills 12—** 12th grade
- ◆ **Language Portfolio—** 50 hours in either DP Spanish B or completing a blog regarding a different language
- ◆ **Service Learning—** 50 hours of service to the community over two years
- ◆ **Reflective Project—** 3000 word paper or 1500 word paper and project



To Achieve the IB Full Diploma the following requirements must be met as part of, or in addition to, the required graduation course(s):

3 Higher Level (HL) DP Courses and exams
(No more than 4)

+

3 Standard Level (SL) Courses and exams
(2 if 4 HL are selected)

+

Core: Extended Essay, Theory of Knowledge (TOK, 2 Semesters),
Creativity, Action, Service (CAS)

| Subject | Grade 11 | Subject | Grade 12 |
|--|--|--|---|
| Group 1: Language & Literature | DP Lang & Lit HL Yr 1 or DP Lang & Lit SL Yr 1 | Group 1: Language & Literature | DP Lang & Lit HL Yr 2 (CIS Comp & CIS Lit) Or DP Lang & Lit SL Yr 2 |
| Group 2: Language Acquisition | DP Spanish SL Yr 1 | Group 2: Language Acquisition | DP Spanish SL Yr 2 |
| Group 3: Individuals & Societies | DP European History HL Yr 1 or DP Economics SL | Group 3: Individuals & Societies | DP European History HL/ CIS Euro Yr 2 or DP Economics SL/CIS Econ or DP Business Mgmt SL |
| Group 4: Sciences | DP Biology HL Yr 1 | Group 4: Sciences | DP Biology HL/ CIS Bio Yr 2 or DP Physics/ College Physics SL |
| Group 5: Mathematics | DP Analysis & Approaches HL Yr 1 | Group 5: Mathematics | DP Analysis & Approaches HL Yr 2 or DP Applications & Interpretations SL Yr 1 |
| Theory of Knowledge | TOK 11 | Theory of Knowledge | TOK 12 |
| Group 6: Full Diploma Programme students must take total of 3 HL & 3 SL courses and exams. Choose elective to meet this requirement based on your schedule | DP Film SL DP Visual Arts SL DP Music SL (Band Students will take their Group 6 during their senior year) | Group 6: Full Diploma Programme students must take total of 3 HL & 3 SL courses and exams. Choose elective to meet this requirement based on your schedule | DP Visual Arts SL DP Music SL DP Film SL |
| Note: Group 6 courses may be offered on a rotation. Students should be aware of the rotation when planning grades 11 & 12. | | See Note under Grade 11 regarding rotations. | |

College Credit Opportunities at Rockford High School

| Course Name at RHS | Course Name at College | College Credits | College |
|---|--|-----------------|---------------------------|
| DP Lang & Lit HL/ CIS Comp/ CIS Classic Lit Year 2 | ENGL 191: Intro to Rhetorical & Analytical Writing | 4 credits | St Cloud State University |
| DP Lang & Lit HL/ CIS Comp/ CIS Classic Lit Year 2 | ENGL 201: Classics in Literature | 3 credits | St Cloud State University |
| DP Econ SL/ College Economics | ECON 201: Intro to Econ | 3 credits | St Cloud State University |
| DP European History HL/ College European History Year 2 | HIST 1207: Dawn of Modern Europe | 4 credits | University of MN Duluth |
| DP European History HL/ College European History Year 2 | HIST 1208: Europe in the Modern Age | 4 credits | University of MN Duluth |
| DP Physics SL/ College Physics | PHYS 103: Concepts in Physics | 3 credits | St Cloud State University |
| DP Bio HL Year 2 | BIOL 103: Human Biology | 3 credits | St Cloud State University |
| College Animal Science | ANSC 1101: Introductory Animal Science | 4 credits | U of M– Twin Cities |



St. Cloud State University

Huskies in the High School (HHS)

The program allows eligible high school students to enroll in SCSU introductory college courses in their high schools. This course is taught by a Rockford High School teacher who is monitored and receives support from SCSU faculty coordinators.

Requirements: 11th grade: top 1/3 of their class, 3.5 GPA or ACT score of 23 or Accuplacer Reading test may be required for CIS Comp, 12th grade: top 1/2 of their class, 3.0 GPA or ACT score of 23 or Accuplacer Reading test may be required. To remain eligible for the CIS program, HHS students must maintain a 2.0 GPA.



University of Minnesota-Duluth

College in the Schools (CIS)

These are courses taught by a Rockford High School teacher who is monitored and receives support from UMD faculty coordinators.

Requirements: high school junior or senior and possess a 3.0 overall GPA.

Articulated Credit

The following courses; Intro to Business, Landscape Design and Construction, and Veterinary Science are pending approval for articulated credit. See page 16 for information on Articulated Credit.



UNIVERSITY OF MINNESOTA

Driven to DiscoverSM

University of Minnesota-Twin Cities

College in Schools (CIS)

The program allows eligible high school students to enroll in U of M introductory college courses in their high schools. This course is taught by a Rockford High School teacher who is monitored and receives support from U of M faculty coordinators.

Requirements: 11th and 12th grade students in the top 50% of their class or with instructor approval.



Earning College Credit through IB

Students successfully completing the full IB Diploma can earn:

- 6 credits (lower division) for scores of 4 or higher on HL Level exams
- 2 credits (lower division) for scores of 4 or higher on SL Level exams

Students successfully completing individual IB exams (but not the full Diploma) with scores of 4 or higher can earn:

- 3 or more credits on HL Level exams
- 2 credits or more credits for scores of 4 or higher on SL Level exams

For credit confirmation, refer to the website:
mnprivatecolleges.org/accepted-credits

For more information on college credits , please visit the IB page on the Rockford High School website.

Postsecondary Education Opportunity (PSEO)

Please visit the Minnesota Department of Education for more information on PSEO options at the following web address: <http://education.state.mn.us/MDE/fam/dual/pseo/>

International Baccalaureate Diploma Programme

International Baccalaureate (IB) Diploma Programme is a rigorous, internationally-recognized program for 11th and 12th grade students. Students may earn college credit based on their scores from IB assessments. In 2023, 69 of our students who participated in IB external exams earned a score of 4 or better, which at most MNSCU schools, is recognized for college credit. The amount of college savings for our Rockford students was \$103,290.00 in IB work in 2023. Please contact Jill Gordee, IB Coordinator, for more information.

Articulated Credits

Articulated college credit provides dual-credit towards both high school and college graduation. Students who receive a valid Minnesota Articulated College Credit certificate for one or more courses from their high school should present the certificate(s) they receive to the Registrar's Office at the time of registration to the Minnesota college or university they plan to attend. Students should utilize the Transferology tool to see how their articulated credit will transfer between universities. The student will receive transfer credit for these course(s) and the course(s) that will be designated on the student's college transcript. The valid Minnesota Articulated College Credit certificates are usually valid for five years from the date of issue.

Honors Courses

These rigorous and in-depth courses will allow the student to dive deeper into the subject area. Students enrolling in this courses should be prepared for a challenging schedule and workload. In addition, these courses are considered advanced, which will require an additional time commitment from the student. Rockford High School currently offers the following Honors Courses: Honors Algebra II and MYP Honors English 10.

AFNR Work Based Learning

An elective option for students in the 11th and 12th grade who have a job outside of high school, that enables the student to work during the school day and receive elective credit. Students must complete an application in order to register for this class. Students are excused up to one block per day to go to work. The job must meet all child labor laws and be approved by the instructor. Students must be passing all required coursework to enroll in this course. This course is a hybrid course meaning that students participate in hands-on activities through work and complete course work online. Students attend team meetings, complete work journals and other projects to assist them in becoming successful workers. The instructor will also make visits to the students at their worksites and/or reach out to the employer to ensure students are remaining in good standing in their worksite.

Academic Support

For students to participate in AVID their senior year, they must complete a full two years of AVID beginning with AVID 10. Students will complete an AVID application and interview prior to enrolling in the AVID program.



AVID 9

0100, 0101

Grade: 9

2 Semesters/2 Credits

*Prerequisite: Application and Interview

The AVID or Advancement Via Individual Determination program is a whole school initiative intended to ensure four-year college eligibility for all students, especially those least served in academia. In AVID 9, students are introduced to the WICOR or writing, inquiry, collaboration and reading processes. Students hone their study and critical thinking skills to begin their ascension into college level coursework with more rigorous curriculum.

AVID 10

0110, 0111

Grade: 10

2 Semesters/2 Credits

*Prerequisite: AVID 9, or application and interview

The AVID 10 course begins the second year of the Advancement Via Individual Determination curriculum, building on skills from their freshman year to make their path to college readiness a reality. Students will enhance their skills with WICOR incorporating more analysis of writing assignments using inquiry and collaboration as a means to establish critical thinking and reading skills.

AVID 11

0120, 0121

Grade: 11

2 Semesters/2 Credits

*Prerequisite: AVID 10

The AVID 11 course prepares students to be college and career ready. Students begin the process of researching and applying to colleges as well as continuing to develop skills based on the WICOR curriculum. They will analyze writing prompt and read selectively and with purpose in order to take focused notes and integrate sources into a written text, which are skills necessary for post-secondary success. Students will also be required to be enrolled in a more rigorous and college preparatory course(s) that is/are supported by the tutorial process.

AVID 12

0130, 0131

Grade: 12

2 Semesters/2 Credits

*Prerequisite: AVID 11

AVID 12 is the culmination of the program. Seniors continue to expand their critical literacy and writing skills as based on the WICOR curriculum. The focus of AVID 12 is to expand student's overall writing skills to ensure they write with a high level of skill, maturity, and sophistication. Students will be required to apply for post-secondary financial aid using the FAFSA as well as complete a minimum of five post-secondary applications. The goal of the AVID program is for students to leave Rockford High School college and career ready. They will have achieved this through the rigorous coursework of the AVID curriculum, supported by the tutorial process.

Arts: Performing and Visual

These courses can be used to satisfy the fine arts graduation requirements. Band and choir are full year commitments.

Performing Arts



VARSITY BAND

4500, 4501

Grades: 9

2 Semesters/2 Credits (full year commitment required)

The Varsity Band is a non-auditioned ensemble made up of students in grade 9 that wish to continue their studies on a wind or percussion instrument. Varsity Band performs literature up to grade 3. Varsity performs three main concerts per year. Students in Varsity Band can also participate in summer marching band and may audition for the marching flag team in the spring. A yearly band manual is provided for all students which covers the details of Varsity Band. Varsity Band is a year-long class with students expected to commit to the course for the entire school year.

CONCERT BAND

4600, 4601

Grades: 10, 11, 12

2 Semesters/2 Credits (full year commitment required)

*Chair placement of Concert Band is based on quality of audition.

The Concert Band is an auditioned ensemble made up of students in grades 10-12 that wish to continue their studies on a wind or percussion instrument. Concert Band performs three main concerts during the school year. Concert Band also performs for Homecoming, Memorial Day, Graduation, and pep band performances throughout the fall and winter sports seasons. Concert Band students also have the opportunity to perform at solo/ensemble contests, large group contests, and participate in our jazz program. Concert Band students can also participate in the summer marching program and may audition for the marching flag team in the spring. Concert Band goes on tour every other year to various destinations across the country. A yearly band manual is provided for all students which covers the details of Concert Band. Concert Band is considered a year-long class with students expected to commit to the course for the entire school year.

WIND ENSEMBLE

4700, 4701

Grades: 10, 11, 12

2 Semesters/2 Credits (full year commitment required)

*Chair placement of Wind Ensemble is based on quality of audition.

Wind Ensemble is an auditioned ensemble made up of students in grades 10-12 that wish to continue their studies on a wind or percussion instrument. Wind Ensemble performs literature up to grade 5. Wind Ensemble performs three main concerts per year. Wind Ensemble also performs for Homecoming, Memorial Day, Graduation, and pep band performances throughout the fall and winter sports seasons. Wind Ensemble students also have the opportunity to perform at solo/ensemble contests, large group contests, and participate in our jazz program. Wind Ensemble students can also participate in the summer marching program and may audition for the marching flag team in the spring. Wind Ensemble goes on tour every other year to various destinations across the country. A yearly band manual is provided for all students which covers the details of Wind Ensemble. Wind Ensemble is considered a year-long class with students expected to commit to the course for the entire school year.

DP MUSIC SL

4900, 4901

Grades: 11, 12

2 Semesters/ 2 credits

*Prerequisites: Also enrolled in Wind Ensemble, Concert Band, Concert Choir or Belle Canto Choir

The IB Music course is a one-year project-based class designed for students that wish to explore music beyond a performance-based settings of band or choir. Musical genres of classical, rock, jazz, country and world music will all be explored. Students will learn music software for composition and will apply that knowledge to their own projects. Topics of music history and theory will also be covered and applied to musical projects throughout the school year. Students have the opportunity to receive college credit if they achieve the required score from IB. This class also includes a field trip to a performance at Orchestra Hall in the spring. Students must be enrolled in Band or Choir to enroll in this course.

IB exam registrations are completed in November. Students electing to withdraw from an exam after registration closes will be charged a fee based on the IB exam fee schedule.

***Students may participate in both band and choir.*

Performing Arts

ROCKET CHOIR

4506, 4507

Grades: 9, 10, 11, 12

2 Semesters/2 Credits (full year commitment required)

The Rocket Choir consists of students in grades 9-12 who exhibit the ability to match pitches with their voice, understand choral music, and have a basic understanding of music theory. The purpose of this choir is to prepare them to be better singers, to expose them to a high level of choral music, and to work heavily on proper vocal technique. Singers learn basic skills like sight-reading, pitch names, basic music theory, and small group singing. Singers work hard and have a good time singing while learning to apply proper vocal technique.

CONCERT CHOIR

4606, 4607

Grades: 10, 11, 12

2 Semesters/2 Credits (full year commitment required)

Concert Choir is an auditioned choir for students in grades 10-12 who seek a very challenging choral experience higher than that of Rocket Choir. Only those with advanced reading skills, a FULL YEAR COMMITMENT, and a proven positive work ethic will be allowed in this ensemble. This ensemble will rehearse, study and perform music of the highest quality literature from a wide variety of genres and cultures. Consistent attention and emphasis will be given to healthy vocal production and singing fundamentals. Students will work extensively on sight-singing skills and fundamentals of music theory. Musical and cultural history will be integrated into rehearsals, particularly as it applies to the literature rehearsed. Singers from this ensemble maintain a high level of excellence and find a good balance of hard work and achievement, concentration and enjoyment. Concert Choir tours biannually and represent RHS at state/national tours, state/conference contest and festivals and will perform many concerts per year.

BELLE CANTO CHOIR

4610, 4611

Grades: 10, 11, 12

2 Semesters/2 Credits (full year commitment required)

Belle Canto is a treble auditioned choir for students in grades 10-12 who seek a very challenging choral experience higher than that of Rocket Choir. Only those with advanced reading skills, a FULL YEAR COMMITMENT, and a proven positive work ethic will be allowed in this ensemble. This ensemble will rehearse, study and perform music of the highest quality literature from a wide variety of genres and cultures. Consistent attention and emphasis will be given to healthy vocal production and singing fundamentals. Students will work extensively on sight-singing skills and fundamentals of music theory. Musical and cultural history will be integrated into rehearsals, particularly as it applies to the literature rehearsed. Singers from this ensemble maintain a high level of excellence and find a good balance of hard work and achievement, concentration and enjoyment. Belle Canto tours biannually and represents RHS at state/national tours, state/conference contest and festivals and will perform many concerts per year.

MUSIC THROUGH TECHNOLOGY

#4400

Grades: 10,11,12

1 semester/ 1 credit

This course is geared towards the non-traditional music student, but is open to any student wishing to learn more about composition, arranging and music technology programs. Students will learn about "good" harmonic progression and voice leading techniques through composition and arranging. Students will also present/perform their compositions using their own talents and instruments.

MUSICAL THEATER

#4420

Grades: 9,10,11,12

1 semester/ 1 credit (offered Fall semester)

This elective course will take a look at the evolution of American Musical Theater. Students will learn the importance of historical milestones and people in this genre from the late 19th through 21st century. We will examine techniques used through listening, reading and viewing (live and video). This class is intended for both musical and nonmusical people who are interested and enjoy theater.

***Students may participate in both band and choir.*

Visual Arts



STYLE STUDIO

4012

Grades: 9, 10, 11, 12

1 Semester/1 Credit

Supply fee - TBD

Students entering style studio will create multiple artworks to express ideas based in themes of human history. Students will analyze how the characteristics of styles, movements, and genres in human history contribute to the creation of each style of communication. Artifacts and art from many cultures and continents guide the process. By viewing, reading and reflecting, students gain understanding of meaning in presentation and response to art. A variety of media, materials, and techniques will be practiced including ceramic hand-built clay, Chinese brush painting, calligraphy, printmaking, and acrylic painting.

DRAWING

4105

Grades: 9, 10, 11, 12

1 Semester/1 Credit

Supply fee - TBD

The drawing class is a studio study of the media and process of drawing. Using a variety of media from traditional charcoal and graphite to computer software such as Google Sketch Up and Adobe Illustrator. Students will be guided in the process of finding ideas, sharpening skills and learning to perceive. There is a focus on the three theories of drawing; imitational, formal, and emotional drawings. Students learn how to create expressive drawings, present and respond to these processes.

MYP MEDIA ART

4000

Grades: 9, 10, 11, 12

1 Semesters/1 Credit

Supply fee - TBD

Students in MYP Media Art use cameras and creative software to connect photography skills that engage a process of creative exploration. The elements and tools of current and emerging technologies are used to create and edit images with meaning. Unit study in MYP arts has four objectives of equal importance and value: developing skills; responding; thinking creatively, by knowing and understanding global and related concepts. Students explore original expressions of feeling, mood and content through inquiry projects to help develop a personal vision. The practice of media arts concepts including aesthetics, change, communication, and identity frame the units of study.

PAINTING STUDIO

4110

Grades: 10, 11, 12

1 Semester/ 1 Credit

Supply fee - TBD

Each student is unique and it takes time to explore ideas in a complex world. Painting studio is intended to engage students in the process and practice of painting while experimenting with hands-on learning. Take this class to create original paintings in watercolor, acrylic, mixed media and engage in the process of worthwhile exploration of idea development in personal, cultural, and socially aware environment. The mind is open to contemplation while engaged in the work of painting using the creative process.

DP VISUAL ARTS SL

#4200,4201

Grades: 11,12

2 Semester/ 2 Credit (offered odd years)

Supply fee – TBD

*Prerequisites: Drawing, MYP Media Art Design AND Style Studio or with teacher approval

The course guides student's individual creative process and presentation of art. Students conduct research and inquiry to communicate meaning through the art making process. Creating art that expresses personal meaning within a cultural context is a self-motivated expectation for these students. In-depth arts study may deepen all students' critical and conceptual thinking and understanding. Focus is on the creation of art and individual examination of worldwide art historical and contemporary topics, styles, and genres. While working to build confidence as art-makers with improving technical skills in their chosen art media, students are expected to engage in, experiment with and critically reflect on a wide range of contemporary artistic practices.

IB exam registrations are completed in November. Students electing to withdraw from an exam after registration closes will be charged a fee based on the IB exam fee schedule.

Career & Technical Education (Design)



CAREER PATH WAY OPPORTUNITY

For students determining a potential career-related pathway in Landscape Design or Vet Assistant, and/or in pursuit of the IBCP certificate/diploma, refer to page 13 for course options:

Agriculture

AGRI-BUSINESS

9500

Grades: 10, 11, 12

1 Semester/1 Credit

*This course meets the requirement for the Landscape Design pathway certificate.

Level up your knowledge on agriculture, business and leadership in this hands-on class! We will spend time working on developing plans for operating successful businesses for food, agriculture and the environment and discussing how to market those businesses using platforms such as social media. We will be planning and marketing the spring plant sale, along with exploring the administrative elements of business operations including job interviewing, recruitment, human resources, financial management, risk and more. Attention will also be spent on how to be an economically-literate consumer with discussion on the stock market, day-to-day living and personal finance.

ANIMAL SCIENCE

9510

Grades: 9, 10, 11, 12

1 Semester/1 Credit

Cows, goats, sheep, pigs, you name it, we talk about it all in Animal Science! In this course, students will learn about the different uses for agricultural animals, the principles of genetics and the biological technologies that are commonly used in the livestock industries. This is an excellent course for those interested in animals, genetics, and scientific advances. Some topics we will discuss include animal by-products, livestock industries, cell formation, cell reproduction, genetics and biotechnology. There will also be discussion on how these concepts connect to food safety as we discuss the production of food-animal products such as steaks, pork chops, dairy products, eggs and more. Some lab experiences relating to food preparation will also be included in the course to teach food safety concepts.

COMPANION ANIMALS

9535

Grades: 9, 10, 11, 12

1 Semester/1 Credit (Offered Even years)

*Prerequisite: Animal Science

If dogs, cats, fish, hamsters or horses are your area of interest, Companion Animals is the class for you! Companionship is one of the most important and fundamental roles animals play in our daily lives. This course will investigate scientific concepts relating to the care of companion animals. Students will study the nutrition, safety, training, health and general care of companion animals. The course will focus on dogs, cats, rabbits, birds, reptiles, guinea pigs, rodents, fish and more. Topics will include history, anatomy and physiology, health care, nutrition and feeding, breed characteristics, safety, handling, training, management, the equine industry today, organization and careers in equine science. Laboratory activities will provide opportunities for problem-solving through practical applications to learn scientific concepts. Application to current issues will also be explored.

FOOD SCIENCE

9522

Grades: 10, 11, 12

1 Semester/1 Credit

Fee: TBD

Do you like to cook or bake? Do you find yourself getting hungry throughout the school day? If you answered yes to either of these questions, Food Science is the place for you to be! Food Science is designed to reinforce and enhance the student's knowledge of scientific principles and processes through the study of foods and nutrition. An in-depth understanding of science as it applies to foods will assist students with interest in career and technical education, to understand the food industry as well as food preparation in their daily lives. Whenever possible, students will be involved in hands-on laboratory activities which help apply the ideas learned within the course.

INTRO TO HORTICULTURE

9520

Grades: 9, 10, 11, 12

1 Semester/1 Credit (Offered Even years in the Spring)

Fee: TBD

*This course meets the requirement for the Landscape Design pathway certificate.

Give your green thumb a workout in this fun and exciting course! Horticulture is designed to give students a background in horticultural science and the many career opportunities in the nursery, garden, turf and landscape industries. It addresses the biology and genetics involved in the production, processing and marketing of horticulture plants and productions. Increased interest in the quality of the environment, conservation and restoration projects are stimulating growth in the industry. Quality nursery and landscape operations require skilled, educated employees. Classroom and laboratory content will be enhanced by utilizing appropriate equipment and technology.

NATURAL RESOURCES

9525

Grades: 9, 10, 11, 12

1 Semester/1 Credit (Offered Odd years in the Fall)

Make Minnesota's great outdoors your friend in this course as we explore the trees, soil, water, air and energy systems that play such an important role within our lives. Natural Resources is a course designed to give you a background in natural resource systems and the many career opportunities available in the field. It addresses the biological and environmental issues within our state. The history of natural resources, importance of soils and soil science, water conservation as well as forestry. In the wildlife section, experiences will involve ecological principles, habitat management (forest, cropland, grassland, wetland, pond and stream management), animal life histories, fish and wildlife values, outdoor ethics, conservation careers, agency assistance along with fish and wildlife protection.

Agriculture

AFNR WORK BASED LEARNING

#9550, 9551

Grades: 11, 12

1 Semester/ 1 Credit

Students must complete an application in order to register for this class. Students are excused up to one block per day to go to work. The job must meet all child labor laws and be approved by the instructor. Students must be passing all required coursework to enroll in this course. This course is a hybrid course meaning that students participate in hands-on activities through work and complete course work online. Students attend team meetings, complete work journals and other projects to assist them in becoming successful workers. The instructor will also make visits to the students at their worksites and/or reach out to the employer to ensure students are remaining in good standing in their worksite.

MOO TO YOU: DAIRY SCIENCE

#9620

Grades 9,10,11,12

1 semester/ 1 credit

From grass to glass, join us in this class as we explore all areas of dairy production! The first half of the semester, we will learn all about what it takes to raise cattle, including nutrition, genetics, veterinary care and welfare considerations. Special emphasis will be placed on dairy cattle selection, evaluation and judging and through this, students will also develop oral reasoning skills. The second half of the semester will focus on what happens to milk and dairy products once they leave the farm; examining the food safety and processing methods for dairy products including milk, butter, cheese, yogurt, sour cream, ice cream and so much more. We will also spend time learning how to make these products and utilize the kitchen spaces to create our own homemade dishes that feature dairy products! At the end of the semester, students will also learn about careers within the industry, upcoming trends and much more. Field trips to local dairy farms and dairy product facilities are also a possibility.

COLLEGE ANIMAL SCIENCE

#9630

Grade: 11,12

1 semester/ 1 credit (Offered in the Spring)

Weighted GPA

Prerequisite: Animal Science & top half of class or teacher approval.

*This is a co-seated class for College Animal Science and ANSC 1101. *Dual credit through University of Minnesota

*Students can take the course for college/high school credit. If taken for college credit, the student will receive a grade and credit on a college transcript.

*Some learning will be done online, with potential release days so you can complete assignments and labs outside of class time.

Get up close and personal with small and large animals in this hands-on course! This course provides an overview of the horse, dairy, sheep, poultry, swine, beef and companion animal industries while earning college credits! We'll cover nutrition, genetics, anatomy, humans' relationships to animals, current issues and the public's perception of animal agriculture.

LANDSCAPE DESIGN AND CONSTRUCTION

#9640

Grade: 11,12

1 semester/ 1 credit (Offered Odd years in the Spring)

*Articulated College Credit approval pending

*Students can earn NOCTI Certificate in Horticulture/Landscaping. See page 13 for all required courses for this certificate pathway.

Want to make your neighbors jealous by having the best looking yard on the block? Grow your green thumb and get your hands dirty in this hands-on, minds-on course! Landscapes surround each of us—whether these landscapes are in our yards, our places of work, or even at our school. In this course, we will learn the principles of planning, designing and constructing landscapes. We will begin by identifying and learning about the growing conditions for common landscape plants grown in Minnesota. We will also be introduced to site planning, drafting and scaling, both on paper and digitally. After gaining these skills, you will have the opportunity to create professional and cost-effective landscape plans and designs for the site of your choice. Later in the semester, we will see these skills come to life as we spend a great deal of time outdoors gaining practical experience with equipment, tools and machinery to install landscapes around the school and in the local community. This course emphasizes hands-on and practical learning through applying the principles of design to real-life contexts.

VETERINARY SCIENCE

#9536

Grade: 11,12

1 semester/ 1 credit (Offered Odd years)

*Articulated College Credit approval pending

*Students can earn their Vet Assistant Certificate. See page 13 for all required courses for this certificate pathway.

Save yourself a trip to the vet by learning all about how to take care of your favorite animals! Join us as we explore animal cells and organs, animal systems, disease diagnostics and determine the best treatment for your furry family member or even large animals and livestock. In this class, you will build a foundational understanding of the biological and environmental factors in disease transmission, explore what causes illnesses and learn about the prevention and treatment of common animal disorders. You will also build upon your animal identification skills and learn key facts about different breeds of small or large animals along with the tools and equipment used to treat those animals.

Business



CAREER PATH WAY OPPORTUNITY

For students determining a potential career-related pathway in Business and/or in pursuit of the IBCP certificate/diploma, refer to page 13 for course options:

ACCOUNTING

2502

Grades: 10, 11, 12

1 Semester/1 Credit

This course begins with keeping records for a sole proprietorship. If you want to learn how to make money, how to be an entrepreneur, or if you are interested in a business degree after high school, this course is vital! If you are thinking about business for a major in college, you will be required to take Accounting. Why not sign up for this one now to get a jump start on your future?

COMPUTER APPLICATIONS

2501

Grades: 9, 10, 11, 12

1 Semester/1 Credit

Microsoft Office skills, including Word, Excel, Publisher, and PowerPoint will be heavily emphasized. You will create documents in Word and create a portfolio of real-world business ready forms in Publisher including business cards, letterhead, and brochures. You will learn advanced topics to keep track of business finances using Excel. The skills learned in this course can be used instantly in other courses! Prepare to learn a lot of useful tips and tricks!

INTRO TO BUSINESS

2500

Grades: 10, 11, 12

1 Semester/1 Credit

*Articulated College Credit approval pending

Do you want to be a doctor? Lawyer? Engineer? CEO? Understanding business basics is essential for ALL careers.

This course will give you a broad exposure to business activities including communication, entrepreneurship, ethics, management, marketing and more. The course is designed to help students determine their interest level in business and to gain an insight to various career opportunities.

MARKETING

2503

Grades: 9, 10, 11, 12

1 Semester/1 Credit

Have you ever wondered why so many people will pay hundreds of dollars for a ticket to a sporting event? Or why the tickets cost so much? How much money does Target make for putting their name on the side of a stadium? These are just a few of the questions that will be answered when you discover the ways that businesses use sports/entertainment marketing to increase their profit. Students will understand the basics of the sports and entertainment marketing field through hands-on projects, simulations, and research.

IB exam registrations are completed in November. Students electing to withdraw from an exam after registration closes will be charged a fee based on the IB exam fee schedule.

PERSONAL FINANCE

2510

Grades: 10, 11, 12

1 Semester/1 Credit—

Starting with the Class of 2028, this will be a REQUIRED course for Graduation.

This course uses the Dave Ramsey Foundations in Personal Finance curriculum, specifically tailored to meet the needs for high school students. Through this course, students will learn about many financial matters that will affect them as they go through life such as budgeting, savings, debt, and investing.

PERSONAL & PROFESSIONAL SKILLS - 11

2520

Grades: 11 (spring semester)

1 Semester/1 Credit

Students enrolled in Personal & Professional Skills (PPS) will take one semester in their Junior Year and one in their Senior Year. OJT students need to take PPS 11 spring semester of their junior year. PPS is a two-semester long course open to all students in grades 11 and 12, and is required for students completing the IB Career-Related Programme (CP) and OJT. It is designed to develop attitudes, skills, and strategies to be applied to current and future personal and professional situations. The emphasis is on skills development for success within the workplace. Examples of skills that will be learned: interviewing, resume building, job searching, communication within the workplace, dealing with unethical situations, and understanding career paths.

PERSONAL & PROFESSIONAL SKILLS - 12

#2700

Grades: 12 (fall semester)

1 Semester/1 Credit

*Prerequisite: Personal & Professional Skills 11

This course is open to all students in grade 12 but is required for students completing the IB Career-Related Programme (CP) certification. This course is centered around five themes: Personal development, intercultural understanding, effective communication, thinking processes, and applied ethics. It is designed to develop attitudes, skills, and strategies to be applied to current and future personal and professional situations. Completing this course should provide students with the soft skills and perspective to foster successful relationships. All students in PPS 12 will be required to complete the reflective project.

DP BUSINESS MANAGEMENT SL

#2800,2801

Grades: 11,12

2 Semesters / 2 Credits (full year commitment)

*Prerequisite: Intro To Business

Weighted GPA

Learn to analyze, discuss, and evaluate business activities at local, national, and international levels. This course covers the key characteristics of business organization and environment including the business functions of human resource management, finance and accounts, marketing, and operations management. Links between the topics are central to the course and help students to develop a holistic understanding of today's complex and dynamic business environment.

Technical Education



GENERAL METALS

2100

Grades: 9, 10, 11, 12

1 Semester/1 Credit

Fee: TBD

This is a one semester class that will focus on different types of welding. In this class students will learn safety, the fundamentals of Gas, Stick and Wire feed welding. In addition students will learn to use metal benders, metal band saws, and chop saws for various projects. There will be required projects demonstrating different welds and processes and/or smaller metal welding projects. Students will be introduced to metal forging and sheet metal fabrication. The fee will be determined by the projects built and the materials used based on the current metal price.

GENERAL WOODWORKING

2101

Grades: 9, 10, 11, 12

1 Semester/1 Credit

Fee: TBD

This is a one semester class in which the students will focus on fine woodworking techniques in building smaller projects. In this class the students will learn to safely operate different pieces of woodworking equipment. The fee will be determined by the projects built and the materials used based on the current wood price.

DNA, DROIDS & DRONES

#2112

Grades: 9, 10, 11, 12

1 Semester/1 Credit

Join us in this new and exciting class as we explore the different technologies within the agricultural industry. Some potential topics of discussion could include: drone operation and mission planning, GPS, alternative energy, biotechnology, DNA splicing, genetic engineering, robotic milking, plant propagation, greenhouse management, irrigation systems, agronomy, engineering agricultural structures and much more. The class will be very hands-on, highly applied and project-based in nature.

ADVANCED METALS

2104

Grades: 9, 10, 11, 12

1 Semester/1 Credit

*Prerequisite: General Metals

Fee: TBD

This is primarily a project oriented course. Students will layout and design their own project, along with calculating material costs, repair and/or fabricate personal projects. Further development of welding techniques with pipe, mild steel, aluminum and stainless steel using arc, MIG and TIG processes will also be options to explore within the course.

ADVANCED WOODWORKING

2105

Grades: 9, 10, 11, 12

1 Semester/1 Credit

*Prerequisite: General Woodworking

Fee: TBD

This is a one semester class that will focus on larger woodworking projects and/or furniture. In this class students will learn to safely operate the many different pieces of woodworking equipment. This class is for students interested in a more advanced study of woodworking and for students who can work independently on these larger projects. They will be required to find plans for their project(s). The fee for this class will be based on the materials used for the project at the current wood price.

DIY 101

#2113

Grades: 9, 10, 11, 12

1 Semester/1 Credit

From cars to construction, join us in this fun class to learn the basics of owning a home or car, along with time to build a variety of items that you can use in your daily life. Students will complete a variety of hands-on labs relating to electricity, concrete, plumbing, auto care and much more so they are ready for the real world, along with an opportunity to select a creative project or two that they can make, using platforms such as TikTok or Pinterest as a potential source of inspiration!

GENERAL CONSTRUCTION

#2200

Grades 10, 11, 12

1 Semester/1 Credit

*Prerequisite: General Woodworking

Fee: TBD

This is a one semester class that will focus on different residential construction techniques and applications. In this class, students will learn to safely utilize different tools and safety gear. There will be required small projects to demonstrate proficiency in concrete, framing, wiring, plumbing, insulation and finish work. Then students will complete a project in a group or individually demonstrating all these skills in a finished unit. The fee, if any, will be determined on personal projects based on current material prices.

Individuals and Societies (Social Studies)



| GRADE 9 | GRADE 10 | GRADE 11 | GRADE 12 | ELECTIVES |
|---------------------------|--|--|---|--|
| MYP U.S. History 9 | MYP World History/ Geography 10 | Economics & Gov or DP European Hist HL/ College European Hist-Yr1 or DP Econ SL/ College Econ | DP European Hist HL/ College European Hist – YR2 or Civics or DP Econ SL/ College Econ | <i>See description for grade level</i> History in Popular Culture TOK 11 Psychology I TOK 12 |

MYP U.S. HISTORY 9

7150, 7151

Grade: 9

2 Semesters/2 Credits

This course covers the spectrum of U.S. History from Pre-Contact Civilizations through the Modern Age and includes a focus on the development of the U.S. Government and the Constitution.

This course requires students to explore perspectives in each of the historical eras through textbook readings, primary sources, journal articles, discussion, and writing practice.

MYP WORLD HISTORY/GEOGRAPHY 10

7310, 7311

Grade: 10

2 Semesters/2 Credits

In MYP World History/Geography 10, students study the geography, history, culture, politics and economic systems and the world's places and nations. The emphasis will be on culture, place and history. Students will demonstrate an understanding of the major concepts through written work, projects and presentations. A variety of resources will be used including texts, maps, video and Internet.

ECONOMICS AND GOVERNMENT

7205, 7206

Grade: 11

2 Semesters/2 Credits

Economics provides an introduction to the basic principles of micro and macroeconomics as well as opportunities to learn and practice skills in personal finance. This class will also explore aspects of U.S. Government including budgeting and spending, foreign policy tools including trade, as well as the role of international law and world affairs. Students will investigate topics such as interest rates, money supply, economic growth, supply and demand, markets, inflation, taxation and competition. Additionally, students will practice personal finance skills such as preparing tax statements, using credit wisely, buying and selling stock, financing a house and car and balancing a checkbook.

DP ECONOMICS SL/ COLLEGE ECONOMICS

7207, 7208

Grade: 11,12

2 Semesters/2 Credits

Weighted GPA

*This is a co-seated class for IB DP Economics and CIS Econ 201.

*Dual credit through St. Cloud State University

*Students can take the course for college/high school credit. If taken for college credit, the student will receive a grade and credit on a college transcript.

This course is the equivalent of a college level introductory course in micro and macroeconomics. The purpose of college economics is to give students a thorough understanding of the principles of economics that apply to the economic system as a whole (macroeconomics) and the individual decision makers, both producers and consumers, within the larger economic system (microeconomics). A research report will be required of students.

DP EUROPEAN HISTORY HL/ COLLEGE EUROPEAN HISTORY (YEAR 1)

7320, 7321

Grade: 11

2 Semesters/2 Credit

Weighted GPA

*This is a co-seated class for IB DP History and CITS Hist 1207 and Hist 1208. College credit is earned in Year 2 of this course through UMD.

This is a survey of European history. The course begins with an overview of prehistory through the Middle Ages, followed by an intense investigation and analysis of the making of modern Europe. Students enrolling in this course should be prepared for a challenging schedule and workload. Regular reading of 20+ pages a week is required. A great deal of academic writing is expected from students enrolled in this course.

***** STUDENTS WHO TAKE ECONOMICS & GOVERNMENT (7205,7206) OR DP ECONOMICS SL (7207,7208) IN 11TH GRADE MUST TAKE CIVICS (7450) IN GRADE 12 TO MEET THE 7 CREDIT SOCIAL STUDIES GRADUATION REQUIREMENT.**

Social Studies

DP EUROPEAN HISTORY HL / COLLEGE EUROPEAN HISTORY-- (YEAR 2)

7322,7323

Grade: 12

2 Semesters/2 Credit

Weighted GPA

*Prerequisite: DP Euro History/ College Euro History YR1

*This is a co-seated class for IB DP History and CITS Hist 1207 and Hist 1208

*Dual credit through University of Minnesota Duluth (8 college credits for 12th grade students. Minimum 3.0 GPA required).

*Students can take the course for college/high school credit. If taken for college credit, the student will receive a grade and credit on a college transcript.

This is a survey of European history. The course begins with an overview of prehistory through the Middle Ages, followed by an intense investigation and analysis of the making of modern Europe. Students enrolling in this course should be prepared for a challenging schedule and workload. Regular reading of 20+ pages a week is required. A great deal of academic writing is expected from students enrolled in this course.

CIVICS

7450

Grades: 12

1 Semester/1 Credit

Governments exist as a means of addressing common or public problems. Our engagement with and awareness of the ways our local, state, and federal government meet this need is essential. Students in this course will examine the operations of government, our rights and our responsibilities, the justice system, the election process, citizenship, and essential liberties afforded Americans.

PSYCHOLOGY I

7404

Grades: 11, 12

1 Semester/1 Credit

This course is an introduction to the history and approaches to psychology as well as an investigative look into the biological bases of behavior. It focuses on individual behavior and why an individual thinks, feels, and reacts to certain stimuli. Emphasis will be placed on research methods, how the brain works, sensation versus perception, learning, memory, dreams and altered states of consciousness.

IB exam registrations are completed in November. Students electing to withdraw from an exam after registration closes will be charged a fee based on the IB exam fee schedule.

THEORY OF KNOWLEDGE 11

7411

Grade: 11

1 Semester/1 Credit (Spring of Junior Year)

Students enrolled in Theory of Knowledge will take one semester in their Junior Year and one in their Senior Year. The course is designed to allow students to explore what they know and understand and why they know it. We will use readings, documentaries, podcasts, movies and work in other courses to begin conversations that expand our understanding of the world around us. Students will learn to evaluate knowledge and engage with others who may have a different understanding of knowing. Students have freedom to exercise their learning and follow new ideas as they develop their knowledge. The course will also help students understand how much there is left to know. Students will reflect on their experiences as learners and make connections between academic courses and the outside world through the examination of knowledge questions. Students will develop an understanding of why critically examining knowledge is important, be able to evaluate beliefs, and knowledge claims, and realize that acquisition of knowledge places responsibilities on the learner.

THEORY OF KNOWLEDGE 12

7412

Grade: 12

1 Semester/1 Credit (Fall of Senior Year)

*Required for students completing the IB Full Diploma Program

The course is designed to allow students to explore what they know and understand and why they know it. We will use readings, documentaries, podcasts, movies and work in other courses to begin conversations that expand our understanding of the world around us. Students will learn to evaluate knowledge and engage with others who may have a different understanding of knowing. Students have freedom to exercise their learning and follow new ideas as they develop their knowledge. The course will also help students understand how much there is left to know.

HISTORY IN POPULAR CULTURE

#7451

Grades: 10,11,12

1 semester/ 1 credit

This class asks students to view history through modern popular culture. While the historical people and events are at the center of the course, students will use sources such as films, television episodes, documentaries, historical fiction novels, and social media to understand the ways in which many people build their understandings about the past. Students will assess the accuracy of the sources, analyze the ability of the sources to affect public perceptions, look for possible bias, and examine the impact of these sources as history themselves.

Language and Literature (English)



GRADE 9

MYP English 9

GRADE 10

MYP English 10

or

MYP Honors English 10

GRADE 11

DP Lang & Lit SL (YR 1)

or

DP Lang & Lit HL (YR 1)

GRADE 12

DP Lang & Lit SL (YR 2)

or

**DP Lang & Lit HL/ College
Comp/ College Lit (YR 2)**

ELECTIVES

*See description for
grade level*
Mythology
**Leadership & Personal
Development**
Intro to Film
DP Film SL

MYP ENGLISH 9

3000, 3001

Grade: 9

2 Semesters/2 Credits

This course is designed to introduce students to a variety of text types and the skills associated with analyzing and understand texts. Students will read, write, speak, debate, analyze and create while focusing on several key and related concepts. They will also consider how these concepts relate to larger, global contexts.

MYP ENGLISH 10

3100, 3101

Grade: 10

2 Semesters/2 Credits

The study of literature is more than just reading. This course is designed to develop students analytical skills with a variety of literary and non-literary works. This analysis will help broaden their understanding of literature and the way it reflects its context. Students will demonstrate their understanding through regular writing and assessments designed to get them to make conceptual connections.

MYP HONORS ENGLISH 10

#3600,3601

Grade: 10

2 Semesters/2 Credits

Weighted Grade

*Fulfills English 10 graduation requirement

This course is designed to develop students' analytical skills with a variety of literary and non-literary works. This analysis will help broaden their understanding of literature and the way it reflects its context. Students will demonstrate their understanding through regular writing and assessments designed to get them to make conceptual connections. The Honors section will be paced differently, and will target skills that equip the Honors students to enter the CIS/Higher Level IB options as juniors and seniors.

DP LANG & LIT SL (YEAR 1)

#3216, 3217

Grade: 11

2 Semesters/2 Credits

Students will make comparisons and connections between texts and consider the various ways literary and visual forms explore ideas. Students will also study the relationships between a text, its author, and its audience. Ultimately, students will discover how literary works and other forms of communication generate meaning and relate to our global society as we seek to understand how perspectives are shaped.

DP LANG & LIT HL (YEAR 1)

#3206, 3207

Grade: 11

2 Semesters/2 Credits

Weighted GPA

*This is a co-seated class for IB DP Lang & Lit and Intro to Rhetorical & Analytical Writing SCSU ENGL 191 and Classics of Lit SCSU ENGL 201. College credit is earned in Year 2.

*IB HL Lang and Lit/ ENGL191 and 201 is a two-year course that studies the world wide IB curriculum, as well as, covering the requirements for English 191 and English 201 at St. Cloud State University.

This course aims to develop skills of textual analysis and the understanding that texts, both literary and non-literary, can relate to culturally determined reading practices. The course also encourages students to question the meaning generated by language and texts. An understanding of the ways in which formal elements are used to create meaning in a text is combined with an exploration of how that meaning is affected by reading practices that are culturally defined and by the circumstances of production and reception. The study of literature in translation from other cultures is especially important to IB DP students because it contributes to a global perspective. Texts are chosen from a variety of sources, genres and media.

DP LANG & LIT SL (YEAR 2)

#3218,3219

Grade: 12

2 Semesters/2 Credits

*Prerequisite: DP Lang & Lit SL Year 1

Students will make comparisons and connections between texts and consider the various ways literary and visual forms explore ideas. Students will also study the relationships between a text, its author, and its audience. Ultimately, students will discover how literary works and other forms of communication generate meaning and relate to our global society as we seek to understand how perspectives are shaped.

IB exam registrations are completed in November. Students electing to withdraw from an exam after registration closes will be charged a fee based on the IB exam fee schedule.

English

DP LANG & LIT HL COLLEGE COMP/ COLLEGE CLASSIC LIT (YEAR 2)

#3208,3209

Grade: 12

2 Semesters/2 Credits

Weighted GPA

*Prerequisite: DP Lang Lit HL Year 1

*This is a co-seated class for IB DP Lang & Lit and Intro to Rhetorical & Analytical Writing SCSU ENGL 191 and Classics of Lit SCSU ENGL 201

*Dual credit through St. Cloud State University ((7 college credits for 12th grade students (4 for ENGL191 and 3 for ENGL201)) Minimum of 3.0 GPA is required.

*Students can take the course for college/high school credit. If taken for college credit, the student will receive a grade and credit on a college transcript.

*Students may be required to take the Accuplacer Test to receive college credit.

IB HL Lang and Lit/ ENGL191 and 201 is a two-year course that studies the world wide IB curriculum as well as covering the requirements for English 191 and English 201 at St. Cloud State University. The class aims to develop skills of textual analysis and the understanding that texts, both literary and non-literary, can relate to culturally determined reading practices. The course also encourages students to question the meaning generated by language and texts. An understanding of the ways in which formal elements are used to create meaning in a text is combined with an exploration of how that meaning is affected by reading practices that are culturally defined and by the circumstances of production and reception. The study of literature in translation from other cultures is especially important to IB DP students because it contributes to a global perspective. Texts are chosen from a variety of sources, genres and media. Students will take the IB Lang and Lit exams at the end of the second semester.

LEADERSHIP AND PERSONAL DEVELOPMENT

9545

Grades: 9, 10, 11, 12

1 Semester/1 Credit

This course is designed to assist students in developing skills that will benefit them in school, work and life: effective communication, team building, organization, project management, critical thinking. Students will read, engage in activities, and reflect on personal experiences in order to develop as students, people and leaders. The class requires active participation and discussion along with regular reading and writing related to class projects. In addition, students must be able to complete assigned tasks in both individual and group situations.

MYTHOLOGY

#3401

Grade: 9, 10, 11,12

1Semester/1Credit

This course will examine myths and how past cultures have used mythology to explain the world and human nature. We will focus on Greek and Roman mythology and the impact those stories and characters continue to have on our culture. We will also look at modern mythologies and the role they play in our society.

INTRO TO FILM

#3220

Grade: 10,11,12

1 Semester/1 Credit (Offered in Spring)

In this course you will expand your understanding and appreciation of the art of cinema through a study of the historical, technical, literary, and sociological aspects of filmmaking. We will study the history of movies, cinematography, composition, editing, sound, special effects, film genre, screenwriting, acting, and directing. All concepts will be illustrated through film clips from a variety of film genres, movements, time periods, and locations. Throughout this process, we will view, analyze, and discuss a number of complete films. This course provides the background skills and knowledge for IB Film.

DP FILM SL

#3221, 3222

Grade: 11,12

2 Semesters/2 Credits

Prerequisite: Intro to Film

The DP film course aims to develop students as proficient interpreters and makers of film texts. Through the study and analysis of film texts, and through practical exercises in film production, the film course develops students' critical abilities and their appreciation of artistic, cultural, historical and global perspectives in film. Students examine film concepts, theories, practices and ideas from multiple perspectives, challenging their own viewpoints and biases in order to understand and value those of others. DP film students experiment with film and multimedia technology, acquiring the skills and creative competencies required to successfully communicate through the language of the medium. They develop an artistic voice and learn how to express personal perspectives through film.

IB exam registrations are completed in November. Students electing to withdraw from an exam after registration closes will be charged a fee based on the IB exam fee schedule.

Language Acquisition (Spanish)

GENERAL GUIDELINES FOR WORLD LANGUAGES:

For continued success in Spanish, it is strongly recommended that students earn a grade of 'C' or better before registering for the next level. Each student should consult with his/her current foreign language teacher prior to enrolling for the following year to be certain of accurate placement.

COLLEGE RECOMMENDATION:

Most colleges recommend that students earn high school credit in two or more consecutive years of the same language. Some colleges require three or more years. Students should check with specific colleges for current admission requirements.

Students pursuing the full IB Diploma must take Spanish I (grade 9) and Spanish II (grade 10).



SPANISH FOR SPANISH SPEAKERS

1400, 1401

Grades: 9

2 Semesters/2 Credits

*This course is for speakers who communicate effectively in their home, community language or have lived in a Spanish speaking country for an extended period of time and wish to develop their Spanish language proficiency/competency. A brief oral assessment will determine placement in the program. The course in this track is designed to meet the particular needs of students that already have a strong grasp of the Spanish language. It is a course that validates the linguistic and trans-cultural experiences and knowledge of students in the course. Our goal is to build upon that knowledge and experience by expanding their skills in academic writing and speaking, improving their reading skills, and exploring issues related to identity and culture. *This course will not count towards college language admission requirements.*

SPANISH I

1500, 1501

Grades: 9, 10, 11, 12

2 Semesters/2 Credits

An introduction to the study of Spanish and its culture. Students learn basic Spanish expressions, vocabulary and structural forms. Emphasis is placed on communicating in the present tense in all four modalities (speaking, reading, writing and listening). Students will gain understanding of cultures by making comparisons and connecting with the Spanish-speaking world. Spanish is spoken in the classroom as part of the learning process. Listening for key words and watching for visual clues will aid in understanding. Memorization of terms and their spelling is an essential part of any language course.

SPANISH II

1600, 1601

Grades: 10, 11, 12

2 Semesters/2 Credits;

*Prerequisite Spanish I

This course offers a more in-depth look at the Spanish language. Students will continue to communicate through speaking, writing, listening and reading activities related to personal topics of daily living in formal and informal settings. Students will continue to explore other cultures in the Spanish speaking world and compare their traditions, practices, and perspectives with their own.

DP SPANISH SL (YEAR 1)

1710, 1711

Grades: 11, 12

2 Semesters/2 Credits;

*Prerequisite Spanish II

The Level III Spanish class will build student's mastery of previously learned material as they communicate on a variety of interdisciplinary topics. Students will be exposed to more complex verb tenses and grammatical structures. Students will actively develop communicative and cultural proficiency through extensive written and spoken work in response to a variety of authentic texts. Instruction is conducted mainly in Spanish and students will be expected to increase their use of the language as the course progresses.

DP SPANISH SL (YEAR 2)

1810, 1811

Grades: 12

2 Semesters/2 Credits;

Weighted GPA

*Prerequisite DP Spanish SL Year 1

This course further develops, improves and refines listening, speaking, reading and writing skills through the continued study of the language, literature, and culture of Hispanic countries. Emphasis continues on reading and writing skills in the target language to improve awareness and understanding of the cultural diversity of the Spanish-speaking world. Supplementary materials are implemented to enhance language use. Students experience multiple opportunities to demonstrate proficiency in Spanish in different contexts. Aspects of contemporary Hispanic culture include readings, media, games, and class discussions. Assessment of student performance is identified through written tests, quizzes, and work completion. In addition, students may also be assessed by means of oral tests, spoken dialogues, presentations, short compositions and other displays.

IB exam registrations are completed in November. Students electing to withdraw from an exam after registration closes will be charged a fee based on the IB exam fee schedule.

Mathematics



GRADE 9

MYP Non-Linear Algebra
or
MYP Geometry

GRADE 10

MYP Geometry
or
Algebra II
or
Honors Algebra II

GRADE 11

Algebra II
or
Essentials of Algebra II
or
Honors Algebra II
or
DP A & A HL (YR1)
or
Pre-Calc

GRADE 12

It is recommended to take a Math elective in Grade 12
Pre-Calc
Probability & Statistics
DP A & A HL (YR2)
DP A & I SL

MYP NON-LINEAR ALGEBRA

8000, 8001

Grade: 9

2 Semesters/2 Credits

This course will emphasize the language and properties of algebra, inequalities, linear and non-linear functions, systems of equalities, exponential and quadratic functions, and rational equations and functions. Students are required to have a scientific calculator for this course.

MYP GEOMETRY

8100, 8101

Grades: 9, 10

2 Semesters/2 Credits;

*Prerequisite: 8th grade Algebra or Non-Linear Algebra

This course will emphasize inductive reasoning as a primary method of learning geometry topics. Topics will include the language of geometry, geometric constructions, congruent, circles, area, Pythagorean Theorem and volume. The student will then apply concepts of shape and space to illustrate and describe the physical world and solve problems.

ALGEBRA II

8306, 8307

Grades: 10, 11

2 Semesters/2 Credits;

*Prerequisite: Geometry

Students will analyze mathematical patterns, relationships, and use functions to model and solve problems. Concepts covered: linear equations, systems of linear equations and inequalities, matrices and determinants, quadratic equations and parabolas, functions, powers, roots, radicals, exponential and logarithmic functions, polynomials and polynomial functions, rational functions and quadratic relations. Students are required to have a TI-83 Plus or a TI-84 graphing calculator. Leases are available.

ESSENTIALS OF ALGEBRA II (Accelerated students are not eligible)

8210, 8211

Grades: 11, 12 (Requires teacher approval)

2 Semesters/2 Credits;

*Prerequisite: Geometry

*Fulfills Algebra II graduation requirement

This class covers the same material as Algebra II but at a slower pace. This class fulfills the math requirement at RHS but if students are thinking of a four year college, they might want to enroll in regular Algebra II. Students will analyze mathematical patterns, relationships, and use functions to model and solve problems. Concepts covered will be: linear equations, systems of linear equations and inequalities, matrices and determinants, quadratic equations and parabolas, functions, powers, roots, radicals, exponential and logarithmic functions, polynomials and polynomial functions, rational functions and quadratic relations.

HONORS ALGEBRA II

8201, 8202

Grades: 10, 11

2 Semesters/2 Credits

Weighted GPA

*Prerequisite: Geometry and teacher approval

*Fulfills Algebra II graduation requirement

This course will emphasize expressions, equations, inequalities, sequence and series, probability and statistics and trigonometry. A major emphasis will be on functions including linear, quadratic, polynomial and radical numbers. Students are required to have a TI-83 Plus or a TI-84 graphing calculator. Leases are available.

PRE-CALC

8215, 8216

Grades: 11, 12

2 Semesters/2 Credits

*Prerequisite: B or better in Algebra II

Students will apply algebraic, graphical, numerical, and verbal skills to a variety of types of functions: linear, quadratic, polynomial, radical, rational, exponential, and logarithmic functions. Students will find real and nonreal complex solutions to quadratic and polynomial equations. Students will solve systems of linear and nonlinear equations. Students will demonstrate knowledge of the six trigonometric functions, methods of solving triangles, trigonometric identities, and trigonometric equations. Students will apply knowledge of trigonometric functions and identities to construct quantitative solutions in geography, physical sciences, engineering, and other disciplines. A TI-84 graphing calculator is required for this course. Leases are available.

Mathematics

PROBABILITY & STATISTICS

#8217

Grade: 12

1 Semester/ 1 Credit

*Prerequisite: Algebra II or Honors Algebra II

This course will explore the collection and analysis of data, inferences and conclusions, and the use of probability. Topics include averages, measures of variation, frequency distributions and probability functions associated with random variables, binomial distributions, sampling, the normal curve, and statistical methods available for decision making. Students are required to have a TI-83 or a TI-84 CE Plus graphing calculator for this class. Leases are available.

DP ANALYSIS & APPROACHES HL (YEAR 1)

#8320, 8321

Grade: 11

2 Semesters/2 Credits

Weighted GPA

*Prerequisite: A- or better in Honors Algebra II. B- or better requires teacher approval.

The topics studied in this course are those traditionally offered in the first full year of Calculus in college. This course is designed for students who wish to take the High-Level IB Mathematics examination. Mathematics HL is a course designed for highly motivated students who seek the challenge of an intensive college level Mathematics course, equivalent to pre-calculus, calculus I, parts of calculus II, collegiate number theory, planar geometry and matrix algebra. The topics studied include limits, continuity, derivatives, and integrals of algebraic and transcendental functions and their applications, advanced Trigonometry, and differential equations. This course is recommended only for those students who anticipate studying Mathematics or a related field in college. Students are required to have a TI-83 or a TI-84 CE Plus graphing calculator for this class. Leases are available.

DP ANALYSIS & APPROACHES HL (YEAR 2)

#8322,8323

Grade: 12

2 Semesters/2 Credits

Weighted GPA

*Prerequisite: DP Analysis & Approaches HL Year 1

*Students must take Year 1 & Year 2 to be eligible for college credit. If taken for college credit, the student will receive a grade and credit on a college transcript. The External Assessment at the end of Year 2 will determine a student's eligibility for college credit.

The topics studied in this course are those traditionally offered in the first full year of Calculus in college. This course is designed for students who wish to take the High-Level IB Mathematics examination. Mathematics HL is a course designed for highly motivated students who seek the challenge of an intensive college level Mathematics course, equivalent to pre-calculus, Calculus I and parts of Calculus II, collegiate number theory, planar geometry, and matrix algebra. The topics studied include limits, continuity, derivatives, and integrals of algebraic and transcendental functions and their applications, advanced Trigonometry, and differential equations. This course is recommended only for those students who anticipate studying Mathematics or a related field in college. Students are required to have a TI-83 or a TI-84 CE Plus graphing calculator for this class. Leases are available.

DP APPLICATIONS & INTERPRETATIONS SL

#8330, 8331

Grade: 12

2 Semesters/2 Credits

Weighted GPA

*Prerequisite: Geometry, Algebra II or Honors Algebra II with a B- or higher grade and teacher approval.

This course builds on the concepts of Algebra II in preparation for the IB standard-level Applications & Interpretation examination at the end of the course. Applications and Interpretations investigates the core concepts of algebra, statistics, financial math applications, logic, probability, geometry, basic trigonometry, and an introduction to Calculus. Students will write a paper involving higher order mathematics in an area of interest to the student. Students are required to have a TI-83 or a TI-84 CE Plus graphing calculator for this class. Leases are available.

IB exam registrations are completed in November. Students electing to withdraw from an exam after registration closes will be charged a fee based on the IB exam fee schedule.

Physical Education & Health

Students are required to take Physical Education and Health & Wellness to complete their graduation requirements. As part of the MYP program, we strongly encourage students to take Physical Education in grades 9 or 10.



Physical Education

PHYSICAL EDUCATION (fulfills graduation requirement)

6000

Grades: 9, 10, 11, 12

1 Semester/1 Credit

This is a course designed for students to put MYP Phy Ed principles into practice. In addition to units such as Invasive Games, Net Games and Fitness Testing, students will learn strength and conditioning exercises to improve their physical fitness. Students will design SMART goals based on data from fitness assessments and monitor and track their progress throughout the course.

PEAK PERFORMANCE

6103

Grades: 10, 11, 12

1 Semester/1 Credit

This course is designed for students who have a desire to work on the development of aerobic conditioning and strength training overall health and well-being. Students will develop a cardiovascular/strength program based on fitness assessments and personal fitness goals. The course will primarily utilize the Rocket Power Center.

TEAM AND DUAL SPORTS

6104

Grades: 10, 11, 12

1 Semester/1 Credit

This course will enhance students' interest in a variety of team and dual sports. Participation and knowledge of rules and strategy of the game is expected.

***Students may repeat an elective PE course for credit.*

Physical Education & Health

Students are required to take Physical Education and Health & Wellness to complete their graduation requirements. As part of the MYP program, we strongly encourage students to take Health & Wellness in grade 10.



CAREER PATH WAY OPPORTUNITY

For students determining a potential career-related pathway in CNA and/or in pursuit of the IBCP certificate/diploma, refer to page 13 for course options.

Health

HEALTH & WELLNESS

#6200

Grade: 9, 10, 11, 12

1 Semester/1 Credit

This course will empower students with the skills necessary to develop a healthy lifestyle by improving or maintaining a high level of physical, mental/emotional, and social health. Students will be provided with quality learning experiences that will enable them to take ownership and enhance the quality of everyday life.

HEALTH SCIENCE CAREERS

6300

Grades: 11, 12

1 Semester/1 Credit (Offered odd years)

This course will explore various Health and Science careers and pathways through CentraCare. Students will do interactive and collaborative enrichment activities within the five different careers and pathways to find which areas they are interested in. Students will also have the opportunity to learn about career requirements for further academics and licensure of the career.

SPORTS SCIENCE

6106

Grades: 11, 12

1 Semester/1 Credit (Offered even years)

This course will analyze and break down the areas of anatomy and physiology; and how they work together to create specific movement and concepts, injury prevention; within sports, and the psychology of sport. This class will hit several attributes of learning and assessments; labs, notes, enrichment activities, research, quizzes, projects, and exams.

CERTIFIED NURSING ASSISTANT (CNA)

6400

Grades: 11, 12

1 Semester/1 Credit (Offered in the spring)

Prerequisite: Health and Wellness

The Certified Nursing Assistant (CNA) and Home Health Aide (HHA) course provides classroom and clinical training for individuals interested in pursuing direct patient care in hospitals, nursing homes, or home health care settings. As a CNA, students will be qualified to care for the sick, injured, convalescent, and disabled under the supervision of physicians, licensed practical nurses, and registered nurses. The course includes orientation, basic skills assessment tests, classroom/lab training, and hands-on clinical training. Students will be expected to provide hands-on care during clinicals. Emphasis is placed on the development of the knowledge, attitudes, and skills required of the nursing assistant. Upon completion of all course hours and clinicals, students will be eligible to take the state exam (fee covered by RHS), and, upon passing, will be recognized by the State of Minnesota in its registry of Certified Nursing Assistants. This course is a prerequisite for most LPN or RN programs in Minnesota and is valuable to anyone interested in direct patient care. Please note that some clinical hours may be held outside of regular school hours.

Science



GRADE 9

MYP Science 9

GRADE 10

MYP Chemistry 10
or
MYP Chemistry Concepts
Or
MYP Physics 10

GRADE 11

Biology
or
Biology HL (YR1)

ELECTIVES

See description for grade level
Astronomy
Forensic Science
DP Biology HL (YR2)
DP Physics SL / CIS

MYP SCIENCE 9

9200,9201

Grade: 9

2 Semesters/2 Credits

MYP Science 9 is composed of segments from the Nature of Science, Geology, Astronomy, and Environmental Science. It is taught in an investigative manner using hands-on laboratory experiences to support instruction. Units of study develop students' conceptual understanding of key science ideas such as relationships, change, and systems and encourage students to grow in their organization, collaboration, and thinking skills. Students practice inquiry through experimental investigations, learn principled thinking through data analysis, and build their knowledge of earth and space systems.

MYP CHEMISTRY 10

9253, 9254

Grade: 10

2 Semesters/2 Credits;

*Prerequisite: MYP Science 9

This inquiry-based science course offers an in-depth exploration of foundational chemistry concepts. Topics include: physical and chemical changes, the mole concept, atomic and quantum theories, gases, chemical reactions, acids and bases, nuclear chemistry, organic chemistry, thermodynamics, chemical kinetics, electrochemistry, oxidation-reduction reactions, and chemical equilibrium. Throughout the course, students will learn to explain observable properties of matter using accepted chemistry laws and theories. Students will also design and analyze their own laboratory investigations in order to explore several of these topics. Hands-on participation and strong skills in basic math/algebra, reading, and writing are all vital for success.

MYP PHYSICS 10

#9256, 9257

Grade: 10

2 Semesters/2 Credits;

*Prerequisite: MYP Science 9

This two semester course is intended to provide students with a solid foundation of scientific concepts and procedures in the areas of physics. Students will be introduced to concepts through hands-on, lab based instruction, graphing and graph interpretation, diagrams, demonstrations and short presentations. Topics of study include but are not limited to 1D kinematics (motion), basic dynamics (cause of motion), work and power, waves, sound and light, electricity, and magnetism. If students plan to take DP Physics as a senior, this course will be a prerequisite.

MYP CHEMISTRY CONCEPTS

9260,9261

Grade: 10

2 Semesters/2 Credits;

*Prerequisite: MYP Science 9 AND teacher recommendation
Fulfills chemistry graduation requirement

Chemistry is the study of matter and the changes it undergoes. Students will be introduced to a wide variety of basic chemistry concepts such as states of matter, the makeup of an atom, balancing chemical equations, general nomenclature, and geometric modeling. A special emphasis will focus on reading skills to improve comprehension. This course is designed for students with a desire to improve comprehension in mathematics and reading and for students who learn best through hands-on activities.

BIOLOGY

#9100, 9102

Grade: 11

2 Semesters/2 Credits

*Prerequisite: MYP Chemistry 10 or MYP Physics 10

Biology is the study of living organisms and the interactions they have with each other and their environment. Students will gain understanding of life at the cellular level as well as at the macro-biological level. This understanding will be acquired through practical experience in the classroom, laboratory work, and field study. Specific areas to be studied in detail include, Nature of Science, Biochemistry, Cell Respiration & Photosynthesis, Cells & Cell Transport, DNA & Proteins, Cell Division, Meiosis, Genetics, Evolution, and Ecology.

DP BIOLOGY HL (YEAR 1)

#9330, 9331

Grade: 11

2 Semesters/2 Credits

Weighted GPA

*Prerequisite: MYP Chemistry 10 or MYP Physics 10

This is the first year in a two-year sequence. The course moves at an accelerated pace as it meets all the requirements of the IB curriculum. All of the topics are common to a Freshman-Level college course. Topics covered include: cellular biology, molecular biology, genetics, human physiology, evolution and biodiversity, ecology, plus one additional topic (chosen from biotechnology and bioinformatics, ecology and conservation, or human physiology). After successful completion of this course, students will have the option of taking DP HL Biology YR 2, which includes the DP Exam, their senior year.

Science

DP BIOLOGY HL/ COLLEGE BIOLOGY (YEAR 2)

#9350,9351

Grade: 12

2 Semesters/2 Credits

Weighted GPA

*Prerequisite: DP Biology SL/HL (Year 1)

*This is a co-seated class for Human Biology SCSU BIOL101

*Dual credit through St. Cloud State University -3 college credits for 12th grade students. Minimum 3.0 GPA required.

*Assessments: *Students are expected to complete the IB HL requirements and take the IB HL exam that correlates with this course.*

This course is year 2 of a 2-year biology course sequence designed to give students an in-depth biology curriculum equivalent to a first year college biology course. The goal is to prepare students to take the IB HL examination at the end of the second semester. Students will be expected to do extensive laboratory work as well as reading and writing as a part of this course. Units of study include nucleic acids, metabolism, cell respiration and photosynthesis, plant biology, genetics and evolution, animal physiology, and ecology.

DP PHYSICS SL/ COLLEGE PHYSICS

#9420,9421

Grade: 11,12

2 Semesters/2 Credits

Weighted GPA

*Prerequisite: Algebra II or Honors Algebra II, and MYP Physics 10

*This is a co-seated class for Concepts in Physics SCSU Phys 103.

*Dual credit through St. Cloud State University -3 college credits for 12th grade students. Minimum 3.0 GPA required.

*Students can take the course for college/high school credit. If taken for college credit, the student will receive a grade and credit on a college transcript.

DP Physics SL is a year-long course covering a wide range of topics, including measurement and uncertainties, mechanics, thermal physics, waves, electricity, magnetism, atomic physics, energy production and astrophysics. Students will not only be assessed on their knowledge of the concepts in these topics in class and through the IB external assessment, but will also be asked to show their understanding and application of the scientific method in their Internal Assessment. The process involved with the IB Internal Assessment includes exploration, analysis, evaluation, and communication of findings in a topic of their choice related to physics.

IB exam registrations are completed in November. Students electing to withdraw from an exam after registration closes will be charged a fee based on the IB exam fee schedule.

ASTRONOMY

9400

Grades: 11, 12

1 Semester/1 Credit

Astronomy is the branch of science that deals with celestial objects, space, and the physical universe as a whole.

While not all topics in astronomy can be studied in-depth in one semester, selected topics will be presented in a thematic style. The topics in this elective course include but are not limited to the daytime sky, the nighttime sky, constellations, distances sizes and angles, stars and stellar evolution, along with galaxies and the universe.

FORENSIC SCIENCE

9401

Grades: 9, 10, 11, 12

1 Semester/1 Credit

Forensic science is the application of biology, chemistry, physics, and the earth sciences to the area of criminal investigation. Students will develop critical thinking skills and be able to apply knowledge gained in other disciplines to the process of solving crimes. Emphasis is placed on case studies, laboratory activities, discussions, and simulations.

Topics investigated include: history of forensic science, the crime scene, physical evidence, fingerprints, hair, fibers, and blood evidence.

2024-25 Course Registration Overview

| DEPARTMENT | ELEC | COURSE TITLE | COURSE NUMBER(s) | PREREQUISITE | CREDITS | AVAILABLE TO GRADES: | | | |
|--|------|---------------------------------|------------------|---|---------|----------------------|----|----|----|
| ACADEMIC SUPPORT (Page 17) | E | AVID 9 | 0100, 0101 | Application and Interview | 2 | 9 | | | |
| | E | AVID 10 | 0110, 0111 | AVID 9 or application and interview | 2 | | 10 | | |
| | E | AVID 11 | 0120, 0121 | AVID 10 | 2 | | | 11 | |
| | E | AVID 12 | 0130, 0131 | AVID 11 | 2 | | | | 12 |
| ARTS: PERFORMING (Page 18-19) | E | Varsity Band | 4500, 4501 | | 2 | 9 | 10 | 11 | 12 |
| | E | Concert Band | 4600, 4601 | | 2 | | 10 | 11 | 12 |
| | E | Wind Ensemble | 4700, 4701 | Auditioned Ensemble | 2 | | 10 | 11 | 12 |
| | E | DP Music SL | 4900, 4901 | Wind Ensemble, Concert Band , Concert Choir or Belle Canto Choir concurrently | 2 | | | 11 | 12 |
| | E | Rocket Choir | 4506, 4507 | | 2 | 9 | 10 | 11 | 12 |
| | E | Concert Choir | 4606, 4607 | | 2 | | 10 | 11 | 12 |
| | E | Belle Canto Choir | 4610,4611 | Auditioned Choir | 2 | | 10 | 11 | 12 |
| | E | Music Through Technology | 4400 | | 1 | | 10 | 11 | 12 |
| | E | Musical Theater | 4420 | | 1 | 9 | 10 | 11 | 12 |
| ARTS: VISUAL (Page 20) | E | Style Studio | 4012 | | 1 | 9 | 10 | 11 | 12 |
| | E | Drawing | 4105 | | 1 | 9 | 10 | 11 | 12 |
| | E | MYP Media Art | 4000 | | 1 | 9 | 10 | 11 | 12 |
| | E | Painting Studio | 4110 | | 1 | | 10 | 11 | 12 |
| | E | DP Visual Arts SL | 4200,4201 | Drawing, MYP Media Art AND Style Studio or with teacher approval | 2 | | | 11 | 12 |
| CAREER & TECHNICAL EDUCATION: (DESIGN): AGRICULTURE (Page 21-22) | E | Agri-Business | 9500 | | 1 | 9 | 10 | 11 | 12 |
| | E | Animal Science | 9510 | | 1 | 9 | 10 | 11 | 12 |
| | E | Companion Animals | 9535 | Animal Science | 1 | 9 | 10 | 11 | 12 |
| | E | Food Science | 9522 | | 1 | | 10 | 11 | 12 |
| | E | Intro to Horticulture | 9520 | | 1 | 9 | 10 | 11 | 12 |
| | E | Natural Resources | 9525 | | 1 | 9 | 10 | 11 | 12 |
| | E | AFNR Work Based Learning | 9550,9551 | | 1 | | | 11 | 12 |
| | E | Moo to You: Dairy Science | 9620 | | 1 | 9 | 10 | 11 | 12 |
| | E | College Animal Science | 9630 | Animal Science & Top 50% of class or teacher approval. | 1 | | | 11 | 12 |
| | E | Landscape Design & Construction | 9640 | | 1 | | | 11 | 12 |
| | E | Veterinary Science | 9536 | | 1 | | | 11 | 12 |

| DEPARTMENT | ELEC | COURSE TITLE | COURSE NUMBER(s) | PREREQUISITE | CREDITS | AVAILABLE TO GRADES: | | | |
|---|------|--|------------------|--|---------|----------------------|----|----|----|
| CAREER & TECHNICAL EDUCATION: (DESIGN): BUSINESS (Page 23) | E | Accounting | 2502 | | 1 | | 10 | 11 | 12 |
| | E | Computer Applications | 2501 | | 1 | 9 | 10 | 11 | 12 |
| | E | Intro to Business | 2500 | | 1 | 9 | 10 | 11 | 12 |
| | E | Marketing | 2503 | | 1 | 9 | 10 | 11 | 12 |
| | E | Personal Finance | 2510 | | 1 | | 10 | 11 | 12 |
| | E | Personal/Professional Skills 11 | 2520 | | 1 | | | 11 | |
| | E | Personal/Professional Skills 12 | 2700 | Personal/Professional Skills 11 | 1 | | | | 12 |
| | E | DP Business Management SL | 2800,2801 | Intro to Business | 2 | | | 11 | 12 |
| CAREER & TECHNICAL EDUCATION: (DESIGN): TECHNICAL ED (Page 24) | E | General Metals | 2100 | | 1 | 9 | 10 | 11 | 12 |
| | E | General Woodworking | 2101 | | 1 | 9 | 10 | 11 | 12 |
| | E | DNA, Droids & Drones | 2112 | | 1 | 9 | 10 | 11 | 12 |
| | E | Advanced Metals | 2104 | General Metals | 1 | 9 | 10 | 11 | 12 |
| | E | Advanced Woodworking | 2105 | General Woodworking | 1 | 9 | 10 | 11 | 12 |
| | E | DIY 101 | 2113 | | 1 | 9 | 10 | 11 | 12 |
| | E | General Construction | 2200 | General Woodworking | 1 | | 10 | 11 | 12 |
| INDIVIDUALS AND SOCIETIES (SOCIAL STUDIES) (Page 25-26) | | MYP U.S. History 9 (pre-populated onto 9th grade schedule) | 7150, 7151 | | 2 | 9 | | | |
| | | MYP World History/ Geography 10 (pre-populated onto 10th grade schedule) | 7310, 7311 | | 2 | | 10 | | |
| | | Economics and Government | 7205, 7206 | | 2 | | | 11 | |
| | | DP Econ SL/College Economics | 7207, 7208 | See pg 15 for CIS eligibility | 2 | | | 11 | 12 |
| | | DP European History HL / College European History-Yr1 | 7320, 7321 | | 2 | | | 11 | |
| | | DP European History HL/ College European History-Yr2 | 7322,7323 | DP European History HL/College European History– (Year 1) See pg 15 for CIS eligibility | 2 | | | | 12 |
| | | Civics | 7450 | | 1 | | | | 12 |
| | E | Psychology I | 7404 | | 1 | | | 11 | 12 |
| | E | Theory of Knowledge 11 | 7411 | | 1 | | | 11 | |
| | E | Theory of Knowledge 12 | 7412 | | 1 | | | | 12 |
| | E | History In Popular Culture | 7451 | | 1 | | 10 | 11 | 12 |

| DEPARTMENT | ELEC | COURSE TITLE | COURSE NUMBER(s) | PREREQUISITE | CREDITS | AVAILABLE TO GRADES: | | | |
|--|------|--|------------------|--|---------|----------------------|----|----|----|
| LANGUAGE AND LITERATURE (ENGLISH) (Page 27-28) | | MYP English 9 (pre-populated onto 9th grade schedule) | 3000, 3001 | | 2 | 9 | | | |
| | | MYP English 10 | 3100, 3101 | | 2 | | 10 | | |
| | | MYP Honors English 10 | 3600,3601 | | 2 | | 10 | | |
| | | DP Language & Literature SL (Year 1) | 3216, 3217 | | 2 | | | 11 | |
| | | DP Language & Literature HL (Year 1) | 3206, 3207 | | 2 | | | 11 | |
| | | DP Language & Literature SL (Year 2) | 3218,3219 | DP Language & Literature SL (Year 1) See pg 15 for CIS elig. | 2 | | | | 12 |
| | | DP Lang & Lit HL (Year 2)/ CIS Comp/ CIS Classic Lit | 3208,3209 | DP Language & Literature HL (Year 1) See pg 15 for CIS elig. | 2 | | | | 12 |
| | E | Leadership and Personal Development | 9545 | | 1 | 9 | 10 | 11 | 12 |
| | E | Mythology | 3401 | | 1 | 9 | 10 | 11 | 12 |
| | E | Intro to Film | 3220 | | 1 | | 10 | 11 | 12 |
| | E | DP Film SL | 3221, 3222 | Intro to Film | 2 | | | 11 | 12 |
| LANGUAGE ACQUISITION (Page 29) | E | Spanish for Spanish Speakers | 1400,1401 | Teacher recommendation | 2 | 9 | | | |
| | E | Spanish I | 1500, 1501 | | 2 | 9 | 10 | 11 | 12 |
| | E | Spanish II | 1600, 1601 | Spanish I | 2 | | 10 | 11 | 12 |
| | E | DP Spanish SL (Year 1) | 1710, 1711 | Spanish II | 2 | | | 11 | 12 |
| | E | DP Spanish SL (Year 2) | 1810,1811 | DP Spanish SL (Year 1) | 2 | | | | 12 |
| MATHEMATICS (Page 30-31) | | MYP Non-Linear Algebra (pre-populated onto 9th grade schedule) | 8000,8001 | | 2 | 9 | | | |
| | | MYP Geometry (teacher recommendation) | 8100, 8101 | Non Linear or 8th grade Algebra | 2 | 9 | 10 | | |
| | | Algebra II (teacher recommendation) | 8306, 8307 | MYP Geometry | 2 | | 10 | 11 | |
| | | Essentials of Algebra II (teacher recommendation) | 8210, 8211 | MYP Geometry | 2 | | | 11 | 12 |
| | | Honors Algebra II (teacher recommendation) | 8201, 8202 | MYP Geometry & teacher approval | 2 | | 10 | 11 | |
| | E | Pre-Calc | 8215, 8216 | Algebra II with B or higher | 2 | | | 11 | 12 |
| | E | Probability & Statistics | 8217 | Algebra II or Honors Algebra II | 1 | | | | 12 |
| | E | DP Analysis & Approaches HL (Year 1) | 8320, 8321 | A- or better in Honors Algebra II | 2 | | | 11 | |
| | E | DP Analysis & Approaches HL (Year 2) | 8322,8323 | DP Analysis & Approaches HL (Year 1) | 2 | | | | 12 |
| | E | DP Applications & Interpretations SL | 8330,8331 | Geometry, Algebra II or Honors Algebra II with B– or higher | 2 | | | | 12 |

| DEPARTMENT | ELEC | COURSE TITLE | COURSE NUMBER (s) | PREREQUISITE | CREDITS | AVAILABLE TO GRADES: | | | | |
|--|------|---|-------------------|--|---------|----------------------|----|----|----|----|
| PHYSICAL EDUCATION & HEALTH (Page 32-33) | | Physical Education | 6000 | Required for graduation | 1 | 9 | 10 | 11 | 12 | |
| | E | Peak Performance | 6103 | | 1 | | 10 | 11 | 12 | |
| | E | Team and Dual Sports | 6104 | | 1 | | 10 | 11 | 12 | |
| | | Health & Wellness | 6200 | Required for graduation | 1 | 9 | 10 | 11 | 12 | |
| | E | Health Science Careers | 6300 | | 1 | | | 11 | 12 | |
| | E | Sports Science | 6106 | | 1 | | | 11 | 12 | |
| | E | Certified Nursing Assistant (CNA) | 6400 | Health and Wellness | 1 | | | 11 | 12 | |
| SCIENCE (Page 34-35) | | MYP Science 9 (pre-populated onto 9th gr. schedule) | 9200,9201 | | 2 | 9 | | | | |
| | | MYP Chemistry 10 | 9253, 9254 | MYP Science 9 | 2 | | 10 | | | |
| | | MYP Physics 10 | 9256,9257 | MYP Science 9 | 2 | | 10 | | | |
| | | MYP Chemistry Concepts | 9260,9261 | MYP Science 9, teacher approval | 2 | | 10 | | | |
| | | Biology | 9100, 9102 | MYP Chemistry 10 or MYP Physics 10 | 2 | | | 11 | | |
| | | DP Biology HL (Year 1) | 9330, 9331 | MYP Chemistry 10 or MYP Physics 10 | 2 | | | 11 | | |
| | E | DP Biology HL (Year 2) | 9350,9351 | DP Biology SL/HL (Year 1) See pg 15 for CIS eligibility | 2 | | | | | 12 |
| | E | DP Physics SL/ College Physics | 9420,9421 | Algebra II or Honors Algebra II See pg 15 for CIS eligibility | 2 | | | 11 | 12 | |
| | E | Astronomy | 9400 | | 1 | | | 11 | 12 | |
| | E | Forensic Science | 9401 | | 1 | 9 | 10 | 11 | 12 | |

Activities Offered Throughout the School Year

Rockford Area Schools offers a wide variety of extracurricular activities and sports for students in grades 7-12 to participate in throughout the school year. Approximately 69% of grade 7-12 students participate in at least one extracurricular activity with 50% participating in two or more. Activities registration information, fee information, and coach information can be found on the Activities Page on the Rockford Area Schools website. Enter this URL in your browser: <https://www.rockford.k12.mn.us/activities/activities-homepage>

FALL

- Cross Country (girls & boys)
- Cheerleading
- Football
- Soccer (boys)
- Soccer (girls)
- Tennis (girls)
- Volleyball

WINTER

- Alpine Ski (girls) - Alpine Ski is a training agreement with Breakaways Alpine Ski Team, St. Cloud, MN
- Basketball (boys)
- Basketball (girls)
- Cheerleading
- Dance Team
- Gymnastics
- Hockey (girls & boys) - Girls and boys hockey is offered through a cooperative agreement with Delano High School. For information, contact the Delano Activities office at 763-972-7601 x1914.
- Wrestling

SPRING

- Baseball
- Golf (boys)
- Golf (girls)
- Lacrosse (girls & boys) - Boys and girls lacrosse is offered through a cooperative agreement with Delano High School. For information, contact the Delano Activities office at 763-972-7601 x1914.
- Softball
- Tennis (boys)
- Track & Field
- Trap Shooting

FINE ARTS & OTHER ACTIVITIES

- Band (Varsity, Concert, Jazz, Pep, Marching, Flag Twirlers, Major/Majorette)
- Choir (Rocket Choir, Concert Choir)
- DECA
- Educators Rising
- Essence
- Future Farmers of America (FFA)
- Link Crew
- Musical
- Musical Pit Orchestra
- National Honor Society
- One-Act Play
- Robotics
- Speech
- Step Up
- STRIVE
- Student Council
- Team Managers/Statisticians - Interested students should inquire with the coach
- Yearbook

