

# Rockford High School

## Course Registration Guide

*2023-2024*







## Welcome to 2023-24

# Rockford High School Course Registration

### Rockford High School

7600 County Road 50  
Rockford, MN 55373  
763-477-5846  
Fax 763-477-6123

### Administration

#### Superintendent

Rhonda Dean  
Deanr@rockford.k12.mn.us

#### High School Principal

Paul Menard  
Menardp@rockford.k12.mn.us

#### School Counselors

Samantha Bloom  
Blooms@rockford.k12.mn.us

KellyAnn Lockrem

Lockremk@rockford.k12.mn.us

#### International Baccalaureate Coordinator

Jill Gordee  
Gordeej@rockford.k12.mn.us

#### Director of Teaching and Learning

Robert Danneker  
Dannekerr@rockford.k12.mn.us

#### Special Education Coordinator

Emily Seitzer  
Eseitzer@mawseco.k12.mn.us

Federal and state laws prohibit discrimination in education based on sex/gender, sexual orientation, race, color, creed, national origin, religion, disability, receipt of public assistance, or marital status and age.

### Dear Rockford High School Students and Parents:

Our course registration guide is a tool for families to plan for the next school year and beyond. The Rockford High School registration process begins in eighth grade and prepares students to graduate with the skills they need to succeed in achieving their post-secondary goals.

Rockford High School is authorized as an International Baccalaureate (IB) World School. We offer courses in the Middle Years Programme (MYP) for all 9th and 10th grade students. Additionally, students can select courses in the Diploma Programme (DP) and the Career-Related Programme (CP). DP courses help prepare students for college, offer competitive advantages when applying for admission to universities, and give students access to earn college credit at over 3,000 institutions of higher education. The implementation of IB at Rockford High School has allowed us to give our students a world-class educational experience, inquiry-based and relevant curriculum, and a 1:1 technology program.

Students have several options upon graduation, including attendance at a two- or four-year college or university, vocational training, military service, or entering into the workforce. This upcoming year we are adding three new career pathways in Vet Tech, Landscape Design and CNA. Regardless of which path a student chooses, the process of preparation begins with course registration. As you are choosing courses, please center your thoughts around two critical questions:

- 1) What are the courses that I **need** to take in order to ensure that I meet the graduation requirements for my graduation class?
- 2) What are the courses that I **should** take in order to best prepare me to achieve the goals and dreams that I have for myself and my life after I leave Rockford High School?

Course planning is truly a team effort that involves parents, guardians, students and staff. The faculty and staff at Rockford High School look forward to assisting our students in their efforts to select the classes that will best support their academic goals. We feel that planning carefully now will serve students well in their future years at Rockford High School and in their post-secondary life.

Thank you for choosing Rockford High School, and we look forward to assisting you in making good academic decisions that will set you on a path for future success.

*Rockford High School Administration*

## How to Use This Guide

### Terminology and Definitions

This Course Registration Guide is designed to help you and your parents/ guardians select your courses for next school year. We use registration data to build our master schedule and hire and assign teachers. The guide explains which courses you need for graduation and when you need to take them. It will also help you choose courses to meet your post high school goals whether its further education, working or the military.

#### Prerequisite Course

Courses that students must pass before registering for another course or the next course in the sequence.

#### Required Course

Courses that every student must pass in order to graduate from Rockford High School.

#### Elective Course

Courses that students choose to take to fulfill the graduation requirements.

#### Co-Seated Course

Courses where students learn material for both the high school level course and the college level course. Many IB courses are co-seated with CIS courses– see pg 16 for a course list.

#### International Baccalaureate Diploma Programme

International Baccalaureate (IB) Diploma Programme is a rigorous, internationally-recognized program for 11th and 12th grade students. Students may earn college credit based on their scores from IB assessments.

#### DP SL Course: Diploma Programme Standard Level

These courses require 150 hours of instruction and may be a one or two year course. An exam at the end of year 1 OR year 2 will determine college credit.

#### DP HL Course: Diploma Programme Higher Level

These are college level courses that require 240 hours of instruction. These are two year courses. An exam at the end of year 2 determines college credit.

# Table of Contents

4	Online Student Course Selection Instructions
5	Minnesota Department of Education Graduation Requirements
6	Rockford High School Graduation Requirements
7	NCAA Requirements
9	Minnesota Career Fields
11	International Baccalaureate World School Program
12	Course Sequencing
15	College Credit Opportunities
17	RHS Courses and Descriptions
36	2023-24 Course Registration Overview

# Online Course Selection for 2023-24 School Year

The Infinite Campus registration portal will be open from December 13 – December 22, 2022. Students may select their courses online for 2023-24 following the directions using the link below. For students who need assistance or do not have access to a computer at home, members of the Rockford High School guidance staff will be available on select days to assist them. Using the Academic Planning tool, students are able to view and plan courses for all years.

## Online Student Course Selection Instructions



- 1) Go to the district website at [www.rockford.k12.mn.us](http://www.rockford.k12.mn.us).
- 2) Click on the Infinite Campus Portal icon
- 3) Login using the student's Username and Password (use your school password)
- 4) Use the QR Code below for a link to the registration instructions
- 5) Once complete, review your plan with a parent/ legal guardian and check the "Approved by parent/legal guardian" box at the top
- 5) SAVE your course plan
- 6) Remember to logout when finished

***\*Your course choices matter. We are basing our schedule on student demand. Courses that do not have enough interest will not be offered during the 2023-24 school year.***

### Class Change Requests

Students are encouraged to plan programs carefully. Once the registration process is complete, class change requests are discouraged, and in some cases, not possible after the initial registration.





## Minnesota Department of Education Graduation Requirements

Students complete the academic standards by taking a core course of study that equips them with the knowledge and skills they need for success in postsecondary education, highly skilled work, and civic life. In order to graduate, your child's high school coursework must include at least the minimum state course credit requirements. A course credit is equivalent to a student successfully completing an academic year of study or mastering the subject matter, as determined by the local school district. Students must complete a minimum of 21.5 course credits as follows:

- **4 credits of language arts**
- **3 credits of mathematics**, including algebra, geometry, statistics and probability sufficient to satisfy the standards. Students in the graduating class of 2015 and beyond must complete an algebra II credit or its equivalent as part of the 3-credit requirement. In addition to the high school credits, students in the graduating class of 2015 and beyond must also complete an algebra credit by the end of eighth grade.
- **3 credits of science**, including a biology credit. In addition, students in the graduating class of 2015 and beyond must complete a chemistry, physics, or Career and Technical Education (CTE) credit as part of the 3-credit requirement. (The CTE credit must meet the standards underlying the chemistry or physics credit.)
- **3½ credits of social studies**, including U.S. history, geography, government and citizenship, world history and economics.
- **1 credit in the arts**
- **7 elective credits**

*An agriculture course may fulfill a general science credit requirement. A CTE course may fulfill a general science, mathematics, or arts credit requirement. School districts may require additional course credits or other requirements for graduation beyond the minimum required by the state.*

# Rockford High School Graduation Requirements

Required Areas of Study	Credits
English	8
Social Studies	7
Math (All students must complete Algebra II)	6
Science (All students must complete Chemistry or Physics)	6
Physical Education	1
Health	1
Fine Arts	2
Career & Technical	1
Electives	18
TOTAL	50

**MONITOR YOUR CREDITS:** It is the student's responsibility to monitor their credits and transcript. If the student is not on track to graduate, they jeopardize participating in the graduation ceremony.

**COMMENCEMENT PARTICIPATION:** Students must be within four (4) credits of the graduation requirements by the end of their senior year to participate in the graduation ceremony.

**WEIGHTED GRADING:** Additional weight is given for courses where the curriculum is significantly more challenging, such as College in the School (CIS) courses and International Baccalaureate (IB) courses. College courses taken by PSEO students, deemed by Rockford High School to be equivalent to its CIS courses, are eligible for weighted grading, per District Policy 620R. If a student takes a weighted class at Rockford High School, that student cannot receive weighted grading for the equivalent class taken at college. Per District Policy 613R, weighted classes will receive a two grade increment increase. On a 4.0 scale, weighted classes will be given a .66 boost. (Example: 3.0 grade in a weighted class on a 4.0 scale becomes 3.66.)

**RECOGNITION:** Valedictorian and Salutatorian will be determined after semester one grades are finalized. Full IB Diploma candidates will be recognized at Senior Awards Night and the graduation ceremony.

**NEW STUDENTS:** Any students who open enroll to Rockford High School will begin coursework at the next marking period.



# ONE OPPORTUNITY. LIMITLESS POSSIBILITIES.

If you want to play sports at an NCAA Division I or II school, start by registering for a Certification account with the NCAA Eligibility Center at [eligibilitycenter.org](https://eligibilitycenter.org). If you want to play Division III sports or you aren't sure where you want to compete, start by creating a Profile Page account at [eligibilitycenter.org](https://eligibilitycenter.org).

## ACADEMIC REQUIREMENTS

To play sports at a Division I or II school, you must graduate from high school, complete 16 NCAA-approved core courses, earn a minimum GPA and earn an SAT or ACT score that matches your core-course GPA.

## CORE COURSES

Only courses that appear on your high school's list of NCAA core courses will count toward the 16 core-course requirement; visit [eligibilitycenter.org/courselist](https://eligibilitycenter.org/courselist) for a full list of your high school's approved core courses. Complete 16 core courses in the following areas:

### DIVISION I

Complete 10 NCAA core courses, including seven in English, math or natural/physical science, before your seventh semester.



### DIVISION II



## GRADE-POINT AVERAGE

The NCAA Eligibility Center calculates your **grade-point average** based only on the grades you earn in NCAA-approved core courses.

- DI requires a minimum 2.3 GPA.
- DII requires a minimum 2.2 GPA.

## SLIDING SCALE

Divisions I and II use sliding scales to match test scores and GPAs to determine eligibility. The sliding scale balances your test score with your GPA. If you have a low test score, you need a higher GPA to be eligible. Find more information about sliding scales at [ncaa.org/test-scores](https://ncaa.org/test-scores).

## TEST SCORES

You may take the SAT or ACT an unlimited number of times before you enroll full time in college. Every time you register for the SAT or ACT, use the NCAA Eligibility Center code **9999** to send your scores directly to us from the testing agency. We accept official scores only from the SAT or ACT, and cannot use scores shown on your high school transcript. If you take either test more than once, the best subscore from different tests are used to give you the best possible score. More information regarding the impact of COVID-19 and test scores can be found at [on.ncaa.com/COVID19\\_Fall\\_B](https://on.ncaa.com/COVID19_Fall_B).





## HIGH SCHOOL TIMELINE

### 9<sup>TH</sup> GRADE



- Start planning now! Take the right courses and earn the best grades possible.

- Find your high school's list of NCAA-approved core courses at [eligibilitycenter.org/courselist](http://eligibilitycenter.org/courselist).
- Sign up for a free Profile Page account at [eligibilitycenter.org](http://eligibilitycenter.org) for information on NCAA requirements.

### 10<sup>TH</sup> GRADE



- If you fall behind academically, ask your counselor for help finding approved courses you can take.

- Register for a Profile Page or Certification account with the NCAA Eligibility Center at [eligibilitycenter.org](http://eligibilitycenter.org).
- Monitor your Eligibility Center account for next steps.
- At the end of the year, ask your counselor at each high school or program you attended to upload your official transcript to your Eligibility Center account.

### 11<sup>TH</sup> GRADE



- Check with your counselor to make sure you are on track to complete the required number of NCAA-approved courses and graduate on time with your class.

- Take the SAT/ACT and submit your scores to the NCAA Eligibility Center using code **9999**.
- Ensure your sports participation information is correct in your Eligibility Center account.
- At the end of the year, ask your counselor at each high school or program you attended to upload your official transcript to your Eligibility Center account.

### 12<sup>TH</sup> GRADE



- Complete your final NCAA-approved core courses as you prepare for graduation.

- Take the SAT/ACT again, if necessary, and submit your scores to the NCAA Eligibility Center using code **9999**.
- Request your final amateurism certification beginning April 1 (fall enrollees) or Oct. 1 (winter/spring enrollees) in your Eligibility Center account at [eligibilitycenter.org](http://eligibilitycenter.org).
- After you graduate, ask your counselor to upload your final official transcript with proof of graduation to your Eligibility Center account.
- *Reminder:* Only students on an NCAA Division I or II school's institutional request list will receive a certification.

How to plan your high school courses to meet the 16 core-course requirement:

### 9<sup>TH</sup> GRADE

- (1) English
- (1) Math
- (1) Science
- (1) Social Science and/or additional

**4 CORE COURSES**

### 10<sup>TH</sup> GRADE

- (1) English
- (1) Math
- (1) Science
- (1) Social Science and/or additional

**4 CORE COURSES**

### 11<sup>TH</sup> GRADE

- (1) English
- (1) Math
- (1) Science
- (1) Social Science and/or additional

**4 CORE COURSES**

### 12<sup>TH</sup> GRADE

- (1) English
- (1) Math
- (1) Science
- (1) Social Science and/or additional

**4 CORE COURSES**

Search Frequently Asked Questions: [ncaa.org/studentfaq](http://ncaa.org/studentfaq)

Follow us: @ncaaec @playcollegesports @ncaaec

# Minnesota Career Fields, Clusters & Pathways

Thinking ahead and preparing for careers is helpful as students are headed to the workplace or college. As you enter your junior and senior year of high school, it's important to learn more about yourself to be able to choose a career pathway. Where do you see yourself in ten years? The term “career pathway” means a combination of rigorous and high-quality education, training, and other services that:

- Aligns with the skills needed of industries or employers
- Prepares individuals to be successful in any of their chosen education options
- Provides counseling to support an individual's career goals
- Combines education or training alongside soft skills development for a specific occupation or industry
- Helps the individual gain credentials to increase employability
- Encourages training options that will help an individual advance in their specific occupation or industry

This approach makes it simpler for people to earn industry-recognized credentials and marketable skills that make it easier to find work in growing careers. Some careers that are common today many not be needed tomorrow. All careers require flexibility, knowledge and skills.

The Minnesota Career Fields, Clusters & Pathways chart (on the following page) graphically depicts the organizing framework of the foundation knowledge and skills, career fields, career clusters, and career pathways that Minnesota will use for developing programs of study.

Career clusters are one way to group career choices. Careers with common features are in the same cluster. Clusters can be used during career exploration as a way to find your best career match.

## Career Clusters (shown on following page):

Noted by a block (■) bullet point, represent a grouping of occupations and broad industries into a national classification of 16 clusters that are based upon common knowledge and skills. Career clusters include hundreds of occupations that may be grouped into pathways around which educational programs of study can be built.

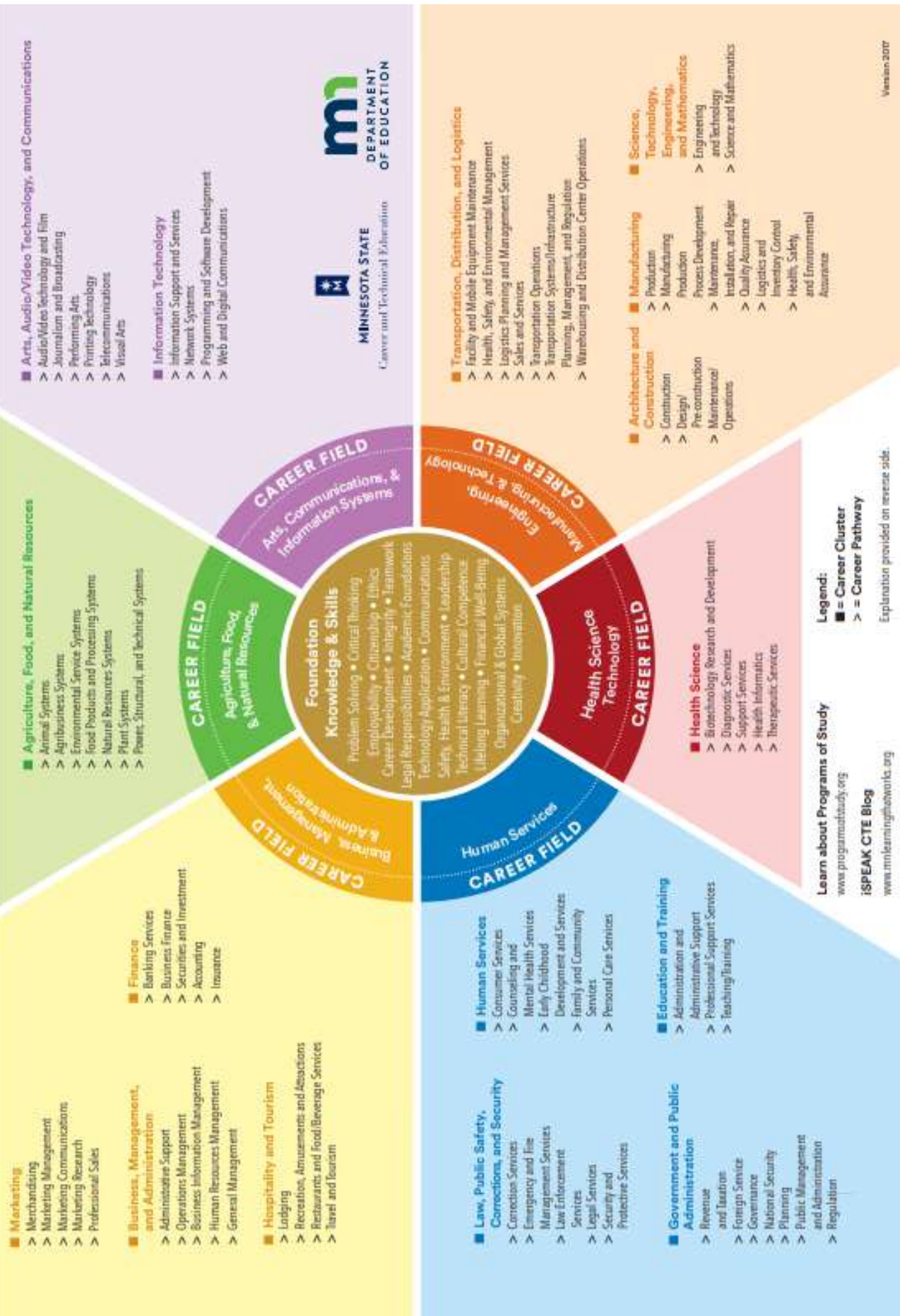
## Career Pathways (shown on the following page):

Noted by an arrow (>) symbol, represent an organization of related occupational areas within a specific career cluster. Each pathway has identified knowledge and skills validated by industry from which programs and programs of study are developed.





# Minnesota Career Fields, Clusters & Pathways





# International Baccalaureate World School

## IB MIDDLE YEARS PROGRAMME

MYP prepares students to be successful in school and to be active, lifelong learners.

MYP

## IB CAREER-RELATED PROGRAMME

CP prepares students to follow their chosen pathways in life.

CP

## IB DIPLOMA PROGRAMME

DP prepares students for success in higher education and to be active participants in a global society.

DP

### MYP Middle Years Programme

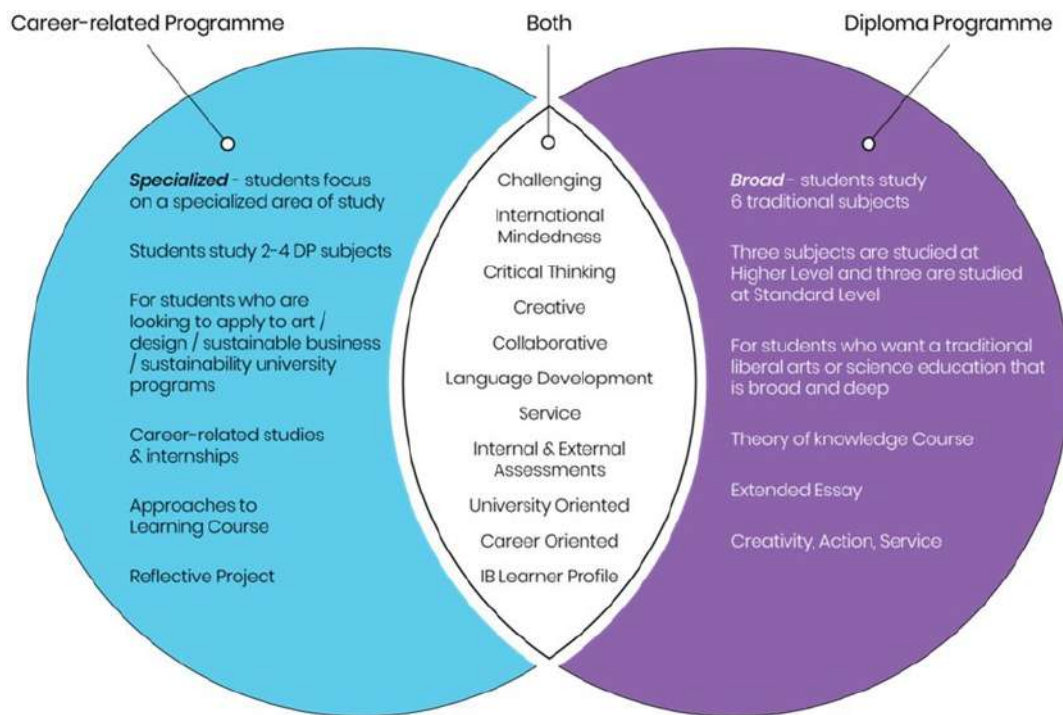
The IB Middle Years Programme, for students ages 11 to 16, provides a framework of concept-based learning and academic challenge that encourages students to embrace and understand the connections between traditional subjects and the real world, and to become critical and reflective thinkers. Students in grades 9-10 will select classes from each of the subject groups. MYP focuses on Approaches to Learning, Service in Action, and culminates with a Personal Project in grade 10.

### IB Career-Related Programme (IBCP)

Designed for students interested in pursuing a career-related education. The IB Career-Related Program (IBCP) provides them with an excellent foundation to support their further studies, as well as, ensure their preparedness for success in the workforce.

### IB Diploma Programme (IBDP)

The IB Diploma is recognized by colleges and universities around the world as superior education, preparing students to succeed at post-secondary institutions and beyond. Successful full diploma candidates will receive an IB Diploma in addition to the Rockford High School Diploma. Students earning the IB Diploma may receive up to one full year of college credit.





# International Baccalaureate

## Candidate School

### IB MIDDLE YEARS PROGRAMME

MYP prepares students to be successful in school and to be active, lifelong learners.

**MYP**

Subject	Grade 9
Language & Literature	MYP English 9
Individuals & Societies	MYP US History 9
Math	MYP Non-Linear Algebra or MYP Geometry
Sciences	MYP Science 9
Arts (Visual and Performing)	1 elective from list
Arts (Visual and Performing)	1 elective from list
Language Acquisition (students pursuing a full IB Diploma must take Spanish I in grade 9)	Spanish I
Elective	2 electives from list

Subject	Grade 10
Language & Literature	MYP English 10
Individuals & Societies	MYP World History/ Geography 10
Math	MYP Geometry or Algebra II or Honors Algebra II
Sciences	MYP Chemistry 10
Physical Education	Physical Education or Lifelong Physical Activity
Health & Wellness	Health & Wellness
Language Acquisition (students pursuing the full IB Diploma must take Spanish II in grade 10)	Spanish II
Elective	2 electives from list





# Rockford IB Career-Related Programme Pathways

## Health Science Pathway



### Required Classes for CNA Certification

- ◆ Certified Nursing Assistant (CNA)
- ◆ Exam required for Certification

### Related Additional Courses:

Health Science Careers      Forensic Science  
Sports Science                  Psychology

## Vet Assistant Pathway



### Required Classes for Vet Assistant Pathway

- ◆ Veterinary Science
- ◆ Companion Animals
- ◆ College Animal Science
- ◆ Vet Clinic Internship required
- ◆ Exam required for Vet Assistant Certificate

### Related Additional Courses:

Animal Science

## Landscape Management Pathway



### Required Classes for Landscape Management Pathway

- ◆ Landscape Design & Construction\*\*
  - ◆ Exam required for Certificate
- AND Choose **ONE** of the following:
- ◆ Agri-Business
  - ◆ Intro to Horticulture

### Related Additional Courses:

General Construction      Intro to Business  
MYP Media Art Design

## Business Career Pathway



### Required Classes for Business Pathway

- ◆ Intro To Business\*\*
- ◆ DP Business Management

### Related Additional Courses:

Accounting                      Marketing

\*\* Denotes course eligible for Articulated College Credit—approval pending

**To Achieve the IB Career Programme Certificate for ANY career pathway, the following requirements must be met in addition to the required pathway course(s):**

- ◆ **Complete 2 DP Courses and Exams—** English, Math, Science, History, Business, Music, Art
- ◆ **Complete Personal & Professional Skills 11—** 11th grade
- ◆ **Complete Personal & Professional Skills 12—** 12th grade
- ◆ **Language Portfolio—** 50 hours in either DP Spanish B or completing a blog regarding a different language
- ◆ **Service Learning—** 50 hours of service to the community over two years
- ◆ **Reflective Project—** 3000 word paper or 1500 word paper and project



**To Achieve the IB Full Diploma the following requirements must be met as part of, or in addition to, the required graduation course(s):**

3 Higher Level (HL) DP Courses and exams  
(No more than 4)

+

3 Standard Level (SL) Courses and exams  
(2 if 4 HL are selected)

+

**Core:** Extended Essay, Theory of Knowledge (TOK, 2 Semesters), Creativity, Action, Service (CAS, 50 Hours)

Subject	Grade 11
Group 1: Language & Literature	DP Lang & Lit HL Year 1 or DP Lang & Lit SL Year 1
Group 2: Language Acquisition	DP Spanish SL Year 1
Group 3: Individuals & Societies	DP European History HL Year 1 or DP Economics SL
Group 4: Sciences	DP Biology HL Year 1
Group 5: Mathematics	DP Analysis & Approaches HL Year 1
Theory of Knowledge	TOK 11
Group 6: Full Diploma Programme students must take total of 3 HL & 3 SL courses and exams. Choose elective to meet this requirement based on your schedule	DP Film SL DP Visual Arts SL/HL Yr. 1 DP Music SL (Band Students will take their Group 6 during their senior year)

Subject	Grade 12
Group 1: Language & Literature	DP Lang & Lit HL Year 2 (CIS Comp & CIS Lit)
Group 2: Language Acquisition	DP Spanish SL Year 2
Group 3: Individuals & Societies	DP European History HL Year 2 (CIS HIST 1208) or DP Economics SL (CIS Econ) or DP Business Mgmt SL
Group 4: Sciences	DP Biology HL Year 2 or DP Physics SL
Group 5: Mathematics	DP Analysis & Approaches HL Year 2 or DP Applications & Interpretations SL Year 1
Theory of Knowledge	TOK 12
Group 6: Full Diploma Programme students must take total of 3 HL & 3 SL courses and exams. Choose elective to meet this requirement based on your schedule	DP Visual Arts SL/HL Yr. 2 DP Music SL DP Film SL/HL Year 2



# College Credit Opportunities at Rockford High School

Course Name at RHS	Course Name at College	College Credits	College
DP Lang & Lit HL/ CIS Comp/ CIS Classic Lit Year 2	ENGL 191: Intro to Rhetorical & Analytical Writing	4 credits	St Cloud State University
DP Lang & Lit HL/ CIS Comp/ CIS Classic Lit Year 2	ENGL 201: Classics in Literature	3 credits	St Cloud State University
DP Econ SL/ College Economics	ECON 201: Intro to Econ	3 credits	St Cloud State University
DP European History HL/ College European History Year 2	HIST 1207: Dawn of Modern Europe	4 credits	University of MN Duluth
DP European History HL/ College European History Year 2	HIST 1208: Europe in the Modern Age	4 credits	University of MN Duluth
DP Physics SL/ College Physics	PHYS 103: Concepts in Physics	3 credits	St Cloud State University
College Animal Science (pending approval)	ANSC 1101	4 credits	U of M– Twin Cities

These courses are co-seated courses. Students will learn material for both the high school level course and the college level course.



## St. Cloud State University

### Huskies in the High School (HHS)

The program allows eligible high school students to enroll in SCSU introductory college courses in their high schools. This course is taught by a Rockford High School teacher who is monitored and receives support from SCSU faculty coordinators.

Requirements: 11th grade students in the top 1/3 of their class and a passing score on the Accuplacer Reading test for CIS Comp, 12th grade students in the top 1/2 of their class. To remain eligible for the CIS program, HHS students must maintain a 2.0 GPA.



## University of Minnesota-Duluth

### College in the Schools (CIS)

These are courses taught by a Rockford High School teacher who is monitored and receives support from UMD faculty coordinators.

Requirements: high school senior and possess a 3.0 overall GPA.

## Articulated Credit

The following courses; Intro to Business, Landscape Design and Construction, and Veterinary Science are pending approval for articulated credit. See page 16 for information on Articulated Credit.



UNIVERSITY OF MINNESOTA

**Driven to Discover<sup>SM</sup>**

## University of Minnesota-Twin Cities

### College in Schools (CIS)

The program allows eligible high school students to enroll in U of M introductory college courses in their high schools. This course is taught by a Rockford High School teacher who is monitored and receives support from U of M faculty coordinators.

Requirements: 11th and 12th grade students in the top 50% of their class or with instructor approval.



## Earning College Credit through IB

Students successfully completing the full IB Diploma can earn:

- 6 credits (lower division) for scores of 4 or higher on HL Level exams
- 2 credits (lower division) for scores of 4 or higher on SL Level exams

Students successfully completing individual IB exams (but not the full Diploma) with scores of 4 or higher can earn:

- 3 or more credits on HL Level exams
- 2 credits or more credits for scores of 4 or higher on SL Level exams

For credit confirmation, refer to the website:  
mnprivatecolleges.org/accepted-credits

## **Postsecondary Education Opportunity (PSEO)**

Please visit the Minnesota Department of Education regarding more information on P.S.E.O options at the following web address:  
<http://education.state.mn.us/MDE/fam/dual/pseo/>

## **International Baccalaureate Diploma Programme**

International Baccalaureate (IB) Diploma Programme is a rigorous, internationally-recognized program for 11th and 12th grade students. Students may earn college credit based on their scores from IB assessments. Please contact Jill Gordee, IB Coordinator, for more information.

## **Articulated Credits**

Articulated college credit provides dual-credit towards both high school and college graduation. Students who receive a valid Minnesota Articulated College Credit certificate for one or more courses from their high school should present the certificate(s) they receive to the Registrar's Office at the time of registration to the Minnesota college or university they plan to attend. Students should utilize the Transferology tool to see how their articulated credit will transfer between universities. The student will receive transfer credit for these course(s) and the course(s) that will be designated on the student's college transcript. The valid Minnesota Articulated College Credit certificates are usually valid for five years from the date of issue.

## **Honors Courses**

These rigorous and in-depth courses will allow the student to dive deeper into the subject area. Students enrolling in this courses should be prepared for a challenging schedule and workload. In addition, these courses are considered advanced, which will require an additional time commitment from the student. Rockford High School currently offers the following Honors Courses: Honors Algebra II and MYP Honors English 10.

## **On-the-Job-Training (OJT)**

An elective option for students in the 11th and 12th grade who have a job outside of high school, that enables the student to work during the school day and receive elective credit. Students must complete an application in order to register for this class. Students are excused up to one block per day to go to work. The job must meet all child labor laws and be approved by the instructor. Students must be passing all required coursework to enroll in this course. This course is a hybrid course meaning that students participate in hands-on activities through work and complete course work online. Students attend team meetings, complete work journals and other projects to assist them in becoming successful workers. The instructor will also make visits to the students at their worksites and/or reach out to the employer to ensure students are remaining in good standing in their worksite.

# Academic Support

*For students to participate in AVID their senior year, they must complete a full two years of AVID beginning with AVID 10. Students will complete an AVID application and interview prior to enrolling in the AVID program.*



## **AVID 9**

# 0100, 0101

Grade: 9

2 Semesters/2 Credits

\*Prerequisite: Application and Interview

The AVID or Advancement Via Individual Determination program is a whole school initiative intended to ensure four-year college eligibility for all students, especially those least served in academia. In AVID 9, students are introduced to the WICOR or writing, inquiry, collaboration and reading processes. Students hone their study and critical thinking skills to begin their ascension into college level coursework with more rigorous curriculum.

## **AVID 10**

# 0110, 0111

Grade: 10

2 Semesters/2 Credits

\*Prerequisite: AVID 9, or application and interview

The AVID 10 course begins the second year of the Advancement Via Individual Determination curriculum, building on skills from their freshman year to make their path to college readiness a reality. Students will enhance their skills with WICOR incorporating more analysis of writing assignments using inquiry and collaboration as a means to establish critical thinking and reading skills.

## **AVID 11**

# 0120, 0121

Grade: 11

2 Semesters/2 Credits

\*Prerequisite: AVID 10

The AVID 11 course prepares students to be college and career ready. Students begin the process of researching and applying to colleges as well as continuing to develop skills based on the WICOR curriculum. They will analyze writing prompt and read selectively and with purpose in order to take focused notes and integrate sources into a written text, which are skills necessary for post-secondary success. Students will also be required to be enrolled in a more rigorous and college preparatory course(s) that is/are supported by the tutorial process.

## **AVID 12**

# 0130, 0131

Grade: 12

2 Semesters/2 Credits

\*Prerequisite: AVID 11

AVID 12 is the culmination of the program. Seniors continue to expand their critical literacy and writing skills as based on the WICOR curriculum. The focus of AVID 12 is to expand student's overall writing skills to ensure they write with a high level of skill, maturity, and sophistication. Students will be required to apply for post-secondary financial aid using the FAFSA as well as complete a minimum of five post-secondary applications. The goal of the AVID program is for students to leave Rockford High School college and career ready. They will have achieved this through the rigorous coursework of the AVID curriculum, supported by the tutorial process.

# Arts: Performing and Visual

*These courses can be used to satisfy the fine arts graduation requirements. Band and choir are full year commitments.*

## Performing Arts



### **VARSITY BAND**

# 4500, 4501

Grades: 9

2 Semesters/2 Credits (full year commitment required)

The Varsity Band is a non-auditioned ensemble made up of students in grade 9 that wish to continue their studies on a wind or percussion instrument. Varsity Band performs literature up to grade 3. Varsity performs three main concerts per year. Students in Varsity Band can also participate in summer marching band and may audition for the marching flag team in the spring. A yearly band manual is provided for all students which covers the details of Varsity Band. Varsity Band is a year-long class with students expected to commit to the course for the entire school year.

### **CONCERT BAND**

# 4600, 4601

Grades: 10, 11, 12

2 Semesters/2 Credits (full year commitment required)

\*Chair placement of Concert Band is based on quality of audition.

The Concert Band is an auditioned ensemble made up of students in grades 10-12 that wish to continue their studies on a wind or percussion instrument. Concert Band performs three main concerts during the school year. Concert Band also performs for Homecoming, Memorial Day, Graduation, and pep band performances throughout the fall and winter sports seasons. Concert Band students also have the opportunity to perform at solo/ensemble contests, large group contests, and participate in our jazz program. Concert Band students can also participate in the summer marching program and may audition for the marching flag team in the spring. Concert Band goes on tour every other year to various destinations across the country. A yearly band manual is provided for all students which covers the details of Concert Band. Concert Band is considered a year-long class with students expected to commit to the course for the entire school year.

### **WIND ENSEMBLE**

# 4700, 4701

Grades: 10, 11, 12

2 Semesters/2 Credits (full year commitment required)

\*Chair placement of Wind Ensemble is based on quality of audition.

Wind Ensemble is an auditioned ensemble made up of students in grades 10-12 that wish to continue their studies on a wind or percussion instrument. Wind Ensemble performs literature up to grade 5. Wind Ensemble performs three main concerts per year. Wind Ensemble also performs for Homecoming, Memorial Day, Graduation, and pep band performances throughout the fall and winter sports seasons. Wind Ensemble students also have the opportunity to perform at solo/ensemble contests, large group contests, and participate in our jazz program. Wind Ensemble students can also participate in the summer marching program and may audition for the marching flag team in the spring. Wind Ensemble goes on tour every other year to various destinations across the country. A yearly band manual is provided for all students which covers the details of Wind Ensemble. Wind Ensemble is considered a year-long class with students expected to commit to the course for the entire school year.

### **DP MUSIC SL**

# 4900, 4901

Grades: 11, 12

2 Semesters/ 2 credits

\*Prerequisites: Also enrolled in Wind Ensemble, Concert Band, Concert Choir or Belle Canto Choir

The IB Music course is intended for any student that wishes to explore music beyond a performance-based class such as band or choir. Topics will include music history, world music, music theory and composition. Music explored in class will range from early Gregorian chant to contemporary music. Musical genres of classical, jazz, rock, country and world music will all be explored. Students will make connections between the art form of music with cultural events of that time and will walk away with a broader understanding of how art, history, and world events come together. Students will also learn how music is put together and how expression can be infused into composition. Students will then apply that knowledge to their own musical projects. Many of the assessments for this course are project-based. Requirements of the class will include journaling, performance, and composition as required by IB.

*IB exam registrations are completed in November. Students electing to withdraw from an exam after registration closes will be charged a fee based on the IB exam fee schedule.*

*\*\*Students may participate in both band and choir.*

# Performing Arts

## **ROCKET CHOIR**

# 4506, 4507

Grades: 9, 10, 11, 12

2 Semesters/2 Credits (full year commitment required)

The Rocket Choir consists of students in grades 9-12 who exhibit the ability to match pitches with their voice, understand choral music, and have a basic understanding of music theory. The purpose of this choir is to prepare them to be better singers, to expose them to a high level of choral music, and to work heavily on proper vocal technique. Singers learn basic skills like sight-reading, pitch names, basic music theory, and small group singing. Singers work hard and have a good time singing while learning to apply proper vocal technique.

## **CONCERT CHOIR**

# 4606, 4607

Grades: 10, 11, 12

2 Semesters/2 Credits (full year commitment required)

Concert Choir is an auditioned choir for students in grades 10-12 who seek a very challenging choral experience higher than that of Rocket Choir. Only those with advanced reading skills, a FULL YEAR COMMITMENT, and a proven positive work ethic will be allowed in this ensemble. This ensemble will rehearse, study and perform music of the highest quality literature from a wide variety of genres and cultures. Consistent attention and emphasis will be given to healthy vocal production and singing fundamentals. Students will work extensively on sight-singing skills and fundamentals of music theory. Musical and cultural history will be integrated into rehearsals, particularly as it applies to the literature rehearsed. Singers from this ensemble maintain a high level of excellence and find a good balance of hard work and achievement, concentration and enjoyment. Concert Choir tours biannually and represent RHS at state/national tours, state/conference contest and festivals and will perform many concerts per year.

## **BELLE CANTO CHOIR**

# 4610, 4611

Grades: 10, 11, 12

2 Semesters/2 Credits (full year commitment required)

Belle Canto is a treble auditioned choir for students in grades 10-12 who seek a very challenging choral experience higher than that of Rocket Choir. Only those with advanced reading skills, a FULL YEAR COMMITMENT, and a proven positive work ethic will be allowed in this ensemble. This ensemble will rehearse, study and perform music of the highest quality literature from a wide variety of genres and cultures. Consistent attention and emphasis will be given to healthy vocal production and singing fundamentals. Students will work extensively on sight-singing skills and fundamentals of music theory. Musical and cultural history will be integrated into rehearsals, particularly as it applies to the literature rehearsed. Singers from this ensemble maintain a high level of excellence and find a good balance of hard work and achievement, concentration and enjoyment. Belle Canto tours biannually and represents RHS at state/national tours, state/conference contest and festivals and will perform many concerts per year.

## **MUSIC THROUGH TECHNOLOGY**

#4400

Grades: 10,11,12

1 semester/ 1 credit

This course is geared towards the non-traditional music student, but is open to any student wishing to learn more about composition, arranging and music technology programs. Students will learn about "good" harmonic progression and voice leading techniques through composition and arranging. Students will also present/perform their compositions using their own talents and instruments.

## **MUSICAL THEATER**

#4420

Grades: 9,10,11,12

1 semester/ 1 credit (offered Fall semester)

This elective course will take a look at the evolution of American Musical Theater. Students will learn the importance of historical milestones and people in this genre from the late 19th through 21st century. We will examine techniques used through listening, reading and viewing (live and video). This class is intended for both musical and nonmusical people who are interested and enjoy theater.

*\*\*Students may participate in both band and choir.*

# Visual Arts



## STYLE STUDIO

# 4012

Grades: 9, 10, 11, 12

1 Semester/1 Credit

Supply fee - TBD

Students entering style studio will create multiple artworks to express ideas based in themes of human history. Students will analyze how the characteristics of styles, movements, and genres in human history contribute to the creation of each style of communication. Artifacts and art from many cultures and continents guide the process. By viewing, reading and reflecting, students gain understanding of meaning in presentation and response to art. A variety of media, materials, and techniques will be practiced including ceramic hand-built clay, Chinese brush painting, calligraphy, printmaking, and acrylic painting.

## DRAWING

# 4105

Grades: 9, 10, 11, 12

1 Semester/1 Credit

Supply fee - TBD

The drawing class is a studio study of the media and process of drawing. Using a variety of media from traditional charcoal and graphite to computer software such as Google Sketch Up and Adobe Illustrator. Students will be guided in the process of finding ideas, sharpening skills and learning to perceive. There is a focus on the three theories of drawing; imitational, formal, and emotional drawings. Students learn how to create expressive drawings, present and respond to these processes.

## MYP MEDIA ART

# 4000

Grades: 9, 10, 11, 12

1 Semesters/1 Credit

Supply fee - TBD

Students in MYP Media Art use cameras and creative software to connect photography skills that engage a process of creative exploration. The elements and tools of current and emerging technologies are used to create and edit images with meaning. Unit study in MYP arts has four objectives of equal importance and value: developing skills; responding; thinking creatively, by knowing and understanding global and related concepts. Students explore original expressions of feeling, mood and content through inquiry projects to help develop a personal vision. The practice of media arts concepts including aesthetics, change, communication, and identity frame the units of study.

## PAINTING STUDIO

# 4110

Grades: 10, 11, 12

1 Semester/ 1 Credit

Supply fee - TBD

Each student is unique and it takes time to explore ideas in a complex world. Painting studio is intended to engage students in the process and practice of painting while experimenting with hands-on learning. Take this class to create original paintings in watercolor, acrylic, mixed media and engage in the process of worthwhile exploration of idea development in personal, cultural, and socially aware environment. The mind is open to contemplation while engaged in the work of painting using the creative process.



## DP VISUAL ARTS SL/ HL (YEAR 1)

#4200,4201

Grades: 11

2 Semester/ 2 Credit

Supply fee – TBD

\*Prerequisites: Drawing, MYP Media Art Design AND Style Studio or with teacher approval

This is Year 1 of a 2-year course. The course guides student's individual creative process and presentation of art. Students conduct research and inquiry to communicate meaning through the art making process. Creating art that expresses personal meaning within a cultural context is a self-motivated expectation for these students. In-depth arts study may deepen all students' critical and conceptual thinking and understanding. Focus is on the creation of art and individual examination of worldwide art historical and contemporary topics, styles, and genres. While working to build confidence as art-makers with improving technical skills in their chosen art media, students are expected to engage in, experiment with and critically reflect on a wide range of contemporary artistic practices. For the IB Programme requirement option A 60% focusing on creation of art and 40% on related research.

## DP VISUAL ARTS SL/HL (YEAR 2)

#4300, 4301

Grade:12

2 semesters/ 2 credit

Weighted GPA

Supply Fee – TBD

Prerequisite: DP Visual Arts SL/HL Year 1

This is year 2 of the 2 year course. Students conduct research to complete a comparative study of several artworks for the IB requirements. A process portfolio is created to record skills and meaning through art making. An In-depth arts study helps deepen critical and conceptual thinking skills and ability to create art that expresses personal meaning. Individual examination of worldwide art historical and contemporary topics, styles, and genres builds knowledge while students work to build confidence as art-makers with improving technical skills in their chosen art media. Second, Students are expected to engage in, experiment with, and critically reflect on a wide range of artistic practices to complete many artistic pieces to be included in an exhibition spring of Sr. year. The three areas of the Diploma Programme Visual Arts are a 1. Comparative Study, 2. Process Portfolio, and 3 Exhibition (art show) of 4 or more completed artistic works. Standard level (SL) students and Higher Level (HL) students have the same three areas. HL students working to earn a college level score have just a few more slides, pages, and artworks to complete for the IB Programme.

*IB exam registrations are completed in November. Students electing to withdraw from an exam after registration closes will be charged a fee based on the IB exam fee schedule.*



# Career & Technical Education (Design)



## CAREER PATH WAY OPPORTUNITY

For students determining a potential career-related pathway in Landscape Design or Vet Tech, and/or in pursuit of the IBCP certificate/diploma, refer to page 13 for course options:

## Agriculture

### AGRI-BUSINESS

# 9500

Grades: 10, 11, 12

1 Semester/1 Credit

Level up your knowledge on agriculture, business and leadership in this hands-on class! We will spend time working on developing plans for operating successful businesses for food, agriculture and the environment and discussing how to market those businesses using platforms such as social media. We will be planning and marketing the spring plant sale, along with exploring the administrative elements of business operations including job interviewing, recruitment, human resources, financial management, risk and more. Attention will also be spent on how to be an economically-literate consumer with discussion on the stock market, day-to-day living and personal finance. We will also advance our leadership skills through learning real-life skills in team settings, such as parliamentary procedure, team development tasks and sales.

### ANIMAL SCIENCE

# 9510

Grades: 9, 10, 11, 12

1 Semester/1 Credit

Cows, goats, sheep, pigs, you name it, we talk about it all in Animal Science! In this course, students will learn about the different uses for agricultural animals, the principles of genetics and the biological technologies that are commonly used in the livestock industries. This is an excellent course for those interested in animals, genetics, and scientific advances. Some topics we will discuss include animal by-products, livestock industries, cell formation, cell reproduction, genetics and biotechnology. There will also be discussion on how these concepts connect to food safety as we discuss the production of food-animal products such as steaks, pork chops, dairy products, eggs and more. Some lab experiences relating to food preparation will also be included in the course to teach food safety concepts.

### COMPANION ANIMALS

# 9535

Grades: 9, 10, 11, 12

1 Semester/1 Credit (Offered Even years)

\*Prerequisite: Animal Science

If dogs, cats, fish, hamsters or horses are your area of interest, Companion Animals is the class for you! Companionship is one of the most important and fundamental roles animals play in our daily lives. This course will investigate scientific concepts relating to the care of companion animals. Students will study the nutrition, safety, training, health and general care of companion animals. The course will focus on dogs, cats, rabbits, birds, reptiles, guinea pigs, rodents, fish and more. Topics will include history, anatomy and physiology, health care, nutrition and feeding, breed characteristics, safety, handling, training, management, the equine industry today, organization and careers in equine science. Laboratory activities will provide opportunities for problem-solving through practical applications to learn scientific concepts. Application to current issues will also be explored.

### FOOD SCIENCE

# 9522

Grades: 10, 11, 12

1 Semester/1 Credit

Fee: TBD

Do you like to cook or bake? Do you find yourself getting hungry throughout the school day? If you answered yes to either of these questions, Food Science is the place for you to be! Food Science is designed to reinforce and enhance the student's knowledge of scientific principles and processes through the study of foods and nutrition. An in-depth understanding of science as it applies to foods will assist students with interest in career and technical education, to understand the food industry as well as food preparation in their daily lives. Whenever possible, students will be involved in hands-on laboratory activities which help apply the ideas learned within the course.

### INTRO TO HORTICULTURE

# 9520

Grades: 9, 10, 11, 12

1 Semester/1 Credit (Offered Even years in the Spring)

Fee: TBD

Give your green thumb a workout in this fun and exciting course! Horticulture is designed to give students a background in horticultural science and the many career opportunities in the nursery, garden, turf and landscape industries. It addresses the biology and genetics involved in the production, processing and marketing of horticulture plants and productions. Increased interest in the quality of the environment, conservation and restoration projects are stimulating growth in the industry. Quality nursery and landscape operations require skilled, educated employees. Classroom and laboratory content will be enhanced by utilizing appropriate equipment and technology.

### NATURAL RESOURCES

# 9525

Grades: 9, 10, 11, 12

1 Semester/1 Credit (Offered Odd years in the Fall)

Make Minnesota's great outdoors your friend in this course as we explore the trees, soil, water, air and energy systems that play such an important role within our lives. Natural Resources is a course designed to give you a background in natural resource systems and the many career opportunities available in the field. It addresses the biological and environmental issues within our state. The history of natural resources, importance of soils and soil science, water conservation as well as forestry. In the wildlife section, experiences will involve ecological principles, habitat management (forest, cropland, grassland, wetland, pond and stream management), animal life histories, fish and wildlife values, outdoor ethics, conservation careers, agency assistance along with fish and wildlife protection.



# Agriculture

## **AG COOP ON THE JOB TRAINING (OJT)**

#9550

Grades: 11, 12

1 Semester/ 1 Credit

Students must complete an application in order to register for this class. Students are excused up to one block per day to go to work. The job must meet all child labor laws and be approved by the instructor. Students must be passing all required coursework to enroll in this course. This course is a hybrid course meaning that students participate in hands-on activities through work and complete course work online. Students attend team meetings, complete work journals and other projects to assist them in becoming successful workers. The instructor will also make visits to the students at their worksites and/or reach out to the employer to ensure students are remaining in good standing in their worksite.

## **MOO TO YOU: DAIRY SCIENCE**

#9620

Grades 9,10,11,12

1 semester/ 1 credit

From grass to glass, join us in this class as we explore all areas of dairy production! The first half of the semester, we will learn all about what it takes to raise cattle, including nutrition, genetics, veterinary care and welfare considerations. Special emphasis will be placed on dairy cattle selection, evaluation and judging and through this, students will also develop oral reasoning skills. The second half of the semester will focus on what happens to milk and dairy products once they leave the farm; examining the food safety and processing methods for dairy products including milk, butter, cheese, yogurt, sour cream, ice cream and so much more. We will also spend time learning how to make these products and utilize the kitchen spaces to create our own homemade dishes that feature dairy products! At the end of the semester, students will also learn about careers within the industry, upcoming trends and much more. Field trips to local dairy farms and dairy product facilities are also a possibility.

## **COLLEGE ANIMAL SCIENCE**

#9630

Grade:11,12

1 semester/ 1 credit (Offered in the Spring)

Weighted GPA

Prerequisite: top half of class or teacher approval.

\*This is a co-seated class for College Animal Science and ANSC 1101. \*Dual credit through University of Minnesota—approval pending

\*Students can take the course for college/high school credit. If taken for college credit, the student will receive a grade and credit on a college transcript.

Get up close and personal with small and large animals in this hands-on course! This course provides an overview of the horse, dairy, sheep, poultry, swine, beef and companion animal industries while earning college credits! We'll cover nutrition, genetics, anatomy, humans' relationships to animals, current issues and the public's perception of animal agriculture. Some learning will be done online, with potential release days so you can complete assignments and labs outside of class time.

## **LANDSCAPE DESIGN AND CONSTRUCTION**

#9640

Grade: 11,12

1 semester/ 1 credit (Offered Odd years in the Spring)

\*Articulated College Credit approval pending

Want to make your neighbors jealous by having the best looking yard on the block? Grow your green thumb and get your hands dirty in this hands-on, minds-on course! Landscapes surround each of us—whether these landscapes are in our yards, our places of work, or even at our school. In this course, we will learn the principles of planning, designing and constructing landscapes. We will begin by identifying and learning about the growing conditions for common landscape plants grown in Minnesota. We will also be introduced to site planning, drafting and scaling, both on paper and digitally. After gaining these skills, you will have the opportunity to create professional and cost-effective landscape plans and designs for the site of your choice. Later in the semester, we will see these skills come to life as we spend a great deal of time outdoors gaining practical experience with equipment, tools and machinery to install landscapes around the school and in the local community. This course emphasizes hands-on and practical learning through applying the principles of design to real-life contexts.

## **VETERINARY SCIENCE**

#9536

Grade: 11,12

1 semester/ 1 credit (Offered Odd years)

\*Articulated College Credit approval pending

Save yourself a trip to the vet by learning all about how to take care of your favorite animals! Join us as we explore animal cells and organs, animal systems, disease diagnostics and determine the best treatment for your furry family member or even large animals and livestock. In this class, you will build a foundational understanding of the biological and environmental factors in disease transmission, explore what causes illnesses and learn about the prevention and treatment of common animal disorders. You will also build upon your animal identification skills and learn key facts about different breeds of small or large animals along with the tools and equipment used to treat those animals.

# Business



## CAREER PATH WAY OPPORTUNITY

For students determining a potential career-related pathway in Business and/or in pursuit of the IBCP certificate/diploma, refer to page 13 for course options:

### ACCOUNTING

# 2502

Grades: 10, 11, 12

1 Semester/1 Credit

This course begins with keeping records for a sole proprietorship. If you want to learn how to make money, how to be an entrepreneur, or if you are interested in a business degree after high school, this course is vital! If you are thinking about business for a major in college, you will be required to take Accounting. Why not sign up for this one now to get a jump start on your future?

### COMPUTER APPLICATIONS

# 2501

Grades: 9, 10, 11, 12

1 Semester/1 Credit

Microsoft Office skills, including Word, Excel, Publisher, and PowerPoint will be heavily emphasized. You will create documents in Word and create a portfolio of real-world business ready forms in Publisher including business cards, letterhead, and brochures. You will learn advanced topics to keep track of business finances using Excel. The skills learned in this course can be used instantly in other courses! Prepare to learn a lot of useful tips and tricks!

### INTRO TO BUSINESS

# 2500

Grades: 9, 10, 11, 12

1 Semester/1 Credit

\*Articulated College Credit approval pending

Do you want to be a doctor? Lawyer? Engineer? CEO? Understanding business basics is essential for ALL careers. This course will give you a broad exposure to business activities including communication, entrepreneurship, ethics, management, marketing and more. The course is designed to help students determine their interest level in business and to gain an insight to various career opportunities.

### MARKETING

# 2503

Grades: 9, 10, 11, 12

1 Semester/1 Credit

Have you ever wondered why so many people will pay hundreds of dollars for a ticket to a sporting event? Or why the tickets cost so much? How much money does Target make for putting their name on the side of a stadium? These are just a few of the questions that will be answered when you discover the ways that businesses use sports/entertainment marketing to increase their profit. Students will understand the basics of the sports and entertainment marketing field through hands-on projects, simulations, and research.

*IB exam registrations are completed in November. Students electing to withdraw from an exam after registration closes will be charged a fee based on the IB exam fee schedule.*

### PERSONAL FINANCE

# 2510

Grades: 10, 11, 12

1 Semester/1 Credit

This course uses the Dave Ramsey Foundations in Personal Finance curriculum, specifically tailored to meet the needs for high school students. Through this course, students will learn about many financial matters that will affect them as they go through life such as budgeting, savings, debt, and investing. Personal Finance is recommended for all high school students in order to learn how to manage money efficiently and responsibly.

### PERSONAL & PROFESSIONAL SKILLS - 11

# 2520

Grades: 11 (spring semester)

1 Semester/1 Credit

Students enrolled in Personal & Professional Skills (PPS) will take one semester in their Junior Year and one in their Senior Year. OJT students need to take PPS 11 spring semester of their junior year. PPS is a two-semester long course open to all students in grades 11 and 12, and is required for students completing the IB Career-Related Programme (CP) and OJT. It is designed to develop attitudes, skills, and strategies to be applied to current and future personal and professional situations. The emphasis is on skills development for success within the workplace. Examples of skills that will be learned: interviewing, resume building, job searching, communication within the workplace, dealing with unethical situations, and understanding career paths.

### PERSONAL & PROFESSIONAL SKILLS - 12

#2700

Grades: 12 (fall semester)

1 Semester/1 Credit

\*Prerequisite: Personal & Professional Skills 11

This course is designed around five central themes: Personal development, intercultural understanding, effective communication, thinking processes, and applied ethics. In addition to the five themes that this class dives into, students can also expect to develop in the areas of responsibility, perseverance, resilience, and self-esteem. Each of these areas is applied to both the student's personal lives as well as what they will encounter and how to apply them in the business world. Completing this course should provide students with the soft skills and perspective to foster successful relationships.

### DP BUSINESS MANAGEMENT SL

#2800,2801

Grades: 11,12

2 Semesters / 2 Credits (full year commitment)

Weighted GPA

In this course students will learn to analyze, discuss, and evaluate business activities at local, national, and international levels. This course covers the key characteristics of business organization and environment including the business functions of human resource management, finance and accounts, marketing, and operations management. Links between the topics are central to the course and helps students to develop a holistic understanding of today's complex and dynamic business environment.

# Technical Education



## GENERAL METALS

# 2100

Grades: 9, 10, 11, 12

1 Semester/1 Credit

Fee: TBD

This is a one semester class that will focus on different types of welding. In this class students will learn safety, the fundamentals of Gas, Stick and Wire feed welding. In addition students will learn to use metal benders, metal band saws, and chop saws for various projects. There will be required projects demonstrating different welds and processes and/or smaller metal welding projects. Students will be introduced to metal forging and sheet metal fabrication. The fee will be determined by the projects built and the materials used based on the current metal price.

## GENERAL WOODWORKING

# 2101

Grades: 9, 10, 11, 12

1 Semester/1 Credit

Fee: TBD

This is a one semester class in which the students will focus on fine woodworking techniques in building smaller projects. In this class the students will learn to safely operate different pieces of woodworking equipment. The fee will be determined by the projects built and the materials used based on the current wood price.

## MACHINE TRADES EXPLORATION I

# 2103

Grades: 9, 10, 11, 12

1 Semester/1 Credit

Fee: TBD

This course is designed to give a basic background in both theoretical and practical application of tools and machines used in tool making or one of the related skilled trades. Emphasis will be placed on all the basic fundamentals of machine shop operations and the principals involved. This course will cover measuring tools, shop use mathematics, bench tools, power saws, drill presses, blueprint reading, classical drafting, CAD (Computer Aided Drafting), programming language for milling machines and basic use of a CNC mill (Computer Numerical Control). The students will participate in career exploration and investigation activities and develop a better understanding of all aspects of the industry through career identification and research.

## ADVANCED METALS

# 2104

Grades: 9, 10, 11, 12

1 Semester/1 Credit

\*Prerequisite: General Metals

Fee: TBD

This is primarily a project oriented course. Students will layout and design their own project, along with calculating material costs, repair and/or fabricate personal projects. Further development of welding techniques with pipe, mild steel, aluminum and stainless steel using arc, MIG and TIG processes will also be options to explore within the course.

## ADVANCED WOODWORKING

# 2105

Grades: 9, 10, 11, 12

1 Semester/1 Credit

\*Prerequisite: General Woodworking

Fee: TBD

This is a one semester class that will focus on larger woodworking projects and/or furniture. In this class students will learn to safely operate the many different pieces of woodworking equipment. This class is for students interested in a more advanced study of woodworking and for students who can work independently on these larger projects. They will be required to find plans for their project(s). The fee for this class will be based on the materials used for the project at the current wood price.

## MACHINE TRADES EXPLORATION II

#2111

Grades: 10, 11, 12

1 Semester/1 Credit

\*Prerequisite: Machine Trades Exploration I

Fee: TBD

Machine Trades Exploration II builds on the skills developed and careers explored in Machine Trades Exploration I. Students will move beyond the machining of single parts to the creation of multiple parts that fit together into assemblies. Students in this course will engage in a more in-depth study of measurement, tolerances and fits as they develop a more advanced knowledge of metal machining and fabrication. All of the equipment used in Machine Trades Exploration I will be employed for Machine Trades Exploration II.

## GENERAL CONSTRUCTION

#2200

Grades 10, 11, 12

1 Semester/1 Credit

\*Prerequisite: General Woodworking

Fee: TBD

This is a one semester class that will focus on different residential construction techniques and applications. In this class, students will learn to safely utilize different tools and safety gear. There will be required small projects to demonstrate proficiency in concrete, framing, wiring, plumbing, insulation and finish work. Then students will complete a project in a group or individually demonstrating all these skills in a finished unit. The fee, if any, will be determined on personal projects based on current material prices.

# Individuals and Societies (Social Studies)



## GRADE 9

**MYP U.S. History 9**

## GRADE 10

**MYP World History/  
Geography 10**

## GRADE 11

**Economics & Gov**

**or**

**DP European Hist HL/  
College European Hist-Yr1**

**or**

**DP Econ SL/ College Econ**

## GRADE 12

**DP European Hist HL/  
College European Hist  
- YR2**

**or**

**Civics**

**or**

**DP Econ SL/ College  
Econ**

## ELECTIVES

**See description for  
grade level**

**History in Popular  
Culture  
TOK 11**

**Psychology I  
TOK 12**

### MYP U.S. HISTORY 9

# 7150, 7151

Grade: 9

2 Semesters/2 Credits

This course covers the spectrum of U.S. History from Pre-Contact Civilizations through the Modern Age and includes a focus on the development of the U.S. Government and the Constitution.

This course requires students to explore perspectives in each of the historical eras through textbook readings, primary sources, journal articles, discussion, and writing practice.

### MYP WORLD HISTORY/GEOGRAPHY 10

# 7310, 7311

Grade: 10

2 Semesters/2 Credits

In MYP World History/Geography 10, students study the geography, history, culture, politics and economic systems and the world's places and nations. The emphasis will be on culture, place and history. Students will demonstrate an understanding of the major concepts through written work, projects and presentations. A variety of resources will be used including texts, maps, video and Internet.

### ECONOMICS AND GOVERNMENT

# 7205, 7206

Grade: 11

2 Semesters/2 Credits

Economics provides an introduction to the basic principles of micro and macroeconomics as well as opportunities to learn and practice skills in personal finance. This class will also explore aspects of U.S.

Government including budgeting and spending, foreign policy tools including trade, as well as the role of international law and world affairs. Students will investigate topics such as interest rates, money supply, economic growth, supply and demand, markets, inflation, taxation and competition. Additionally, students will practice personal finance skills such as preparing tax statements, using credit wisely, buying and selling stock, financing a house and car and balancing a checkbook.

### DP EUROPEAN HISTORY HL/ COLLEGE EUROPEAN HISTORY (YEAR 1)

# 7320, 7321

Grade: 11

2 Semesters/2 Credit

Weighted GPA

\*This is a co-seated class for IB DP History and CITS Hist 1207 and Hist 1208. College credit is earned in Year 2 of this course. This is a survey of European history. The course begins with an overview of prehistory through the Middle Ages, followed by an intense investigation and analysis of the making of modern Europe. Students enrolling in this course should be prepared for a challenging schedule and workload. Regular reading of 20+ pages a week is required. A great deal of academic writing is expected from students enrolled in this course.

### DP ECONOMICS SL/ COLLEGE ECONOMICS

# 7207, 7208

Grade: 11,12

2 Semesters/2 Credits

Weighted GPA

\*This is a co-seated class for IB DP Economics and CIS Econ 201.

\*Dual credit through St. Cloud State University (3 college credits, Minimum 3.0 GPA required).

\*Students can take the course for college/high school credit. If taken for college credit, the student will receive a grade and credit on a college transcript.

This course is the equivalent of a college level introductory course in micro and macroeconomics. The purpose of college economics is to give students a thorough understanding of the principles of economics that apply to the economic system as a whole (macroeconomics) and the individual decision makers, both producers and consumers, within the larger economic system (microeconomics). A research report will be required of students.

**\*\*\* STUDENTS WHO TAKE ECONOMICS & GOVERNMENT (7205,7206) OR DP ECONOMICS SL (7207,7208) IN 11TH GRADE MUST TAKE CIVICS (7450) IN GRADE 12 TO MEET THE 7 CREDIT SOCIAL STUDIES GRADUATION REQUIREMENT.**

# Social Studies

## **DP EUROPEAN HISTORY HL / COLLEGE EUROPEAN HISTORY-- (YEAR 2)**

# 7322,7323

Grade: 12

2 Semesters/2 Credit

Weighted GPA

\*Prerequisite: DP Euro History/ College Euro History YR1

\*This is a co-seated class for IB DP History and CITS Hist 1207 and Hist 1208

\*Dual credit through University of Minnesota Duluth (8 college credits for 12th grade students. Minimum 3.0 GPA required).

\*Students can take the course for college/high school credit. If taken for college credit, the student will receive a grade and credit on a college transcript.

This is a survey of European history. The course begins with an overview of prehistory through the Middle Ages, followed by an intense investigation and analysis of the making of modern Europe. Students enrolling in this course should be prepared for a challenging schedule and workload. Regular reading of 20+ pages a week is required. A great deal of academic writing is expected from students enrolled in this course.

## **CIVICS**

# 7450

Grades: 12

1 Semester/1 Credit

Governments exist as a means of addressing common or public problems. Our engagement with and awareness of the ways our local, state, and federal government meet this need is essential. Students in this course will examine the operations of government, our rights and our responsibilities, the justice system, the election process, citizenship, and essential liberties afforded Americans.

## **PSYCHOLOGY I**

# 7404

Grades: 11, 12

1 Semester/1 Credit

This course is an introduction to the history and approaches to psychology as well as an investigative look into the biological bases of behavior. It focuses on individual behavior and why an individual thinks, feels, and reacts to certain stimuli. Emphasis will be placed on research methods, how the brain works, sensation versus perception, learning, memory, dreams and altered states of consciousness.

*IB exam registrations are completed in November. Students electing to withdraw from an exam after registration closes will be charged a fee based on the IB exam fee schedule.*

## **THEORY OF KNOWLEDGE 11**

# 7411

Grade: 11

1 Semester/1 Credit (Spring of Junior Year)

Students enrolled in Theory of Knowledge will take one semester in their Junior Year and one in their Senior Year. The course is designed to allow students to explore what they know and understand and why they know it. We will use readings, documentaries, podcasts, movies and work in other courses to begin conversations that expand our understanding of the world around us. Students will learn to evaluate knowledge and engage with others who may have a different understanding of knowing. Students have freedom to exercise their learning and follow new ideas as they develop their knowledge. The course will also help students understand how much there is left to know. Students will reflect on their experiences as learners and make connections between academic courses and the outside world through the examination of knowledge questions. Students will develop an understanding of why critically examining knowledge is important, be able to evaluate beliefs, and knowledge claims, and realize that acquisition of knowledge places responsibilities on the learner.

## **THEORY OF KNOWLEDGE 12**

# 7412

Grade: 12

1 Semester/1 Credit (Fall of Senior Year)

\*Prerequisite: Theory of Knowledge 11

The course is designed to allow students to explore what they know and understand and why they know it. We will use readings, documentaries, podcasts, movies and work in other courses to begin conversations that expand our understanding of the world around us. Students will learn to evaluate knowledge and engage with others who may have a different understanding of knowing. Students have freedom to exercise their learning and follow new ideas as they develop their knowledge. The course will also help students understand how much there is left to know.

## **HISTORY IN POPULAR CULTURE**

#7451

Grades: 10,11,12

1 semester/ 1 credit

This class will take students on a journey through history viewing it through the eyes of filmmakers. While the actual people and events will be the focus, students will use films that have been created over the last century to compare the accuracy of the film to the actual event, analyze the ability of the film to affect public perceptions, look for possible bias, and examine the impact of films as history themselves. In addition to Hollywood- made films, students will use documentary films, selected print sources, lecture and the internet as sources.



# Language and Literature (English)



## GRADE 9

**MYP English 9**

## GRADE 10

**MYP English 10**

or

**MYP Honors English 10**

## GRADE 11

**DP Lang & Lit SL (YR 1)**

or

**DP Lang & Lit HL (YR 1)**

## GRADE 12

**DP Lang & Lit SL (YR 2)**

or

**DP Lang & Lit HL/ College  
Comp/ College Lit (YR 2)**

## ELECTIVES

*See description for  
grade level*

**Mythology  
Leadership & Personal  
Development  
Intro to Film  
DP Film SL  
DP Film SL/HL -Yr2**

### MYP ENGLISH 9

# 3000, 3001

Grade: 9

2 Semesters/2 Credits

This course is designed to introduce students to a variety of text types and the skills associated with analyzing and understand texts. Students will read, write, speak, debate, analyze and create while focusing on several key and related concepts. They will also consider how these concepts relate to larger, global contexts.

### MYP ENGLISH 10

# 3100, 3101

Grade: 10

2 Semesters/2 Credits

The study of literature is more than just reading. This course is designed to develop students analytical skills with a variety of literary and non-literary works. This analysis will help broaden their understanding of literature and the way it reflects its context. Students will demonstrate their understanding through regular writing and assessments designed to get them to make conceptual connections.

### MYP HONORS ENGLISH 10

#3600,3601

Grade: 10

2 Semesters/2 Credits

Weighted Grade

\*Fulfills English 10 graduation requirement

This course is designed to develop students' analytical skills with a variety of literary and non-literary works. This analysis will help broaden their understanding of literature and the way it reflects its context. Students will demonstrate their understanding through regular writing and assessments designed to get them to make conceptual connections. The Honors section will be paced differently, and will target skills that equip the Honors students to enter the CIS/Higher Level IB options as juniors and seniors.

### DP LANG & LIT SL (YEAR 1)

#3216, 3217

Grade: 11

2 Semesters/2 Credits

Students will make comparisons and connections between texts and consider the various ways literary and visual forms explore ideas. Students will also study the relationships between a text, its author, and its audience. Ultimately, students will discover how literary works and other forms of communication generate meaning and relate to our global society as we seek to understand how perspectives are shaped.

### DP LANG & LIT HL (YEAR 1)

#3206, 3207

Grade: 11

2 Semesters/2 Credits

Weighted GPA

\*This is a co-seated class for IB DP Lang & Lit and Intro to Rhetorical & Analytical Writing SCSU ENGL 191 and Classics of Lit SCSU ENGL 201. Minimum 3.0 GPA Requirements. College credit is earned in Year 2.

\*IB HL Lang and Lit/ ENGL191 and 201 is a two-year course that studies the world wide IB curriculum, as well as, covering the requirements for English 191 and English 201 at St. Cloud State University.

This course aims to develop skills of textual analysis and the understanding that texts, both literary and non-literary, can relate to culturally determined reading practices. The course also encourages students to question the meaning generated by language and texts. An understanding of the ways in which formal elements are used to create meaning in a text is combined with an exploration of how that meaning is affected by reading practices that are culturally defined and by the circumstances of production and reception. The study of literature in translation from other cultures is especially important to IB DP students because it contributes to a global perspective. Texts are chosen from a variety of sources, genres and media.

### DP LANG & LIT SL (YEAR 2)

#3218,3219

Grade: 12

2 Semesters/2 Credits

\*Prerequisite: DP Lang & Lit SL Year 1

Students will make comparisons and connections between texts and consider the various ways literary and visual forms explore ideas. Students will also study the relationships between a text, its author, and its audience. Ultimately, students will discover how literary works and other forms of communication generate meaning and relate to our global society as we seek to understand how perspectives are shaped.

*IB exam registrations are completed in November. Students electing to withdraw from an exam after registration closes will be charged a fee based on the IB exam fee schedule.*

# English

## **DP LANG & LIT HL COLLEGE COMP/ COLLEGE CLASSIC LIT (YEAR 2)**

#3208,3209

Grade: 12

2 Semesters/2 Credits

Weighted GPA

\*Prerequisite: DP Lang Lit HL Year 1

\*This is a co-seated class for IB DP Lang & Lit and Intro to Rhetorical & Analytical Writing SCSU ENGL 191 and Classics of Lit SCSU ENGL 201

\*Dual credit through St. Cloud State University ((7 college credits for 12th grade students (4 for ENGL191 and 3 for ENGL201)) Minimum of 3.0 GPA is required.

\*Students can take the course for college/high school credit. If taken for college credit, the student will receive a grade and credit on a college transcript.

\*\*\*Students will be required to take the Accuplacer Test to receive college credit.

IB HL Lang and Lit/ ENGL191 and 201 is a two-year course that studies the world wide IB curriculum as well as covering the requirements for English 191 and English 201 at St. Cloud State University. The class aims to develop skills of textual analysis and the understanding that texts, both literary and non-literary, can relate to culturally determined reading practices. The course also encourages students to question the meaning generated by language and texts. An understanding of the ways in which formal elements are used to create meaning in a text is combined with an exploration of how that meaning is affected by reading practices that are culturally defined and by the circumstances of production and reception. The study of literature in translation from other cultures is especially important to IB DP students because it contributes to a global perspective. Texts are chosen from a variety of sources, genres and media. Students will take the IB Lang and Lit exams at the end of the second semester.

## **LEADERSHIP AND PERSONAL DEVELOPMENT**

# 9545

Grades: 9, 10, 11, 12

1 Semester/1 Credit

This course is designed to assist students in developing skills that will benefit them in school, work and life: effective communication, team building, organization, project management, critical thinking. Students will read, engage in activities, and reflect on personal experiences in order to develop as students, people and leaders. The class requires active participation and discussion along with regular reading and writing related to class projects. In addition, students must be able to complete assigned tasks in both individual and group situations.

## **MYTHOLOGY**

#3401

Grade: 9, 10, 11,12

1Semester/1Credit

This course will examine myths and how past cultures have used mythology to explain the world and human nature. We will focus on Greek and Roman mythology and the impact those stories and characters continue to have on our culture. We will also look at modern mythologies and the role they play in our society.

## **INTRO TO FILM**

#3220

Grade: 10,11,12

1 Semester/1 Credit (Offered in Spring)

In this course you will expand your understanding and appreciation of the art of cinema through a study of the historical, technical, literary, and sociological aspects of filmmaking. We will study the history of movies, cinematography, composition, editing, sound, special effects, film genre, screenwriting, acting, and directing. All concepts will be illustrated through film clips from a variety of film genres, movements, time periods, and locations. Throughout this process, we will view, analyze, and discuss a number of complete films. This course provides the background skills and knowledge for IB Film.

## **DP FILM SL**

#3221, 3222

Grade: 11,12

2 Semesters/2 Credits (Offered 2024-25 school year)

Prerequisite: Intro to Film

The DP film course aims to develop students as proficient interpreters and makers of film texts. Through the study and analysis of film texts, and through practical exercises in film production, the film course develops students' critical abilities and their appreciation of artistic, cultural, historical and global perspectives in film. Students examine film concepts, theories, practices and ideas from multiple perspectives, challenging their own viewpoints and biases in order to understand and value those of others. DP film students experiment with film and multimedia technology, acquiring the skills and creative competencies required to successfully communicate through the language of the medium. They develop an artistic voice and learn how to express personal perspectives through film.

## **DP FILM SL/ HL (YEAR 2)**

#3212,3213

Grade: 12

2 Semesters/2 Credits

Weighted GPA

\*Prerequisite: DP Film SL & HL Year 1

The DP film course aims to develop students as proficient interpreters and makers of film texts. Through the study and analysis of film texts, and practical exercises in film production, students develop critical abilities and appreciation of artistic, cultural, historical and global perspectives in film. They examine concepts, theories, practices and ideas from multiple perspectives, challenging their own views to understand and value those of others. Students are challenged to acquire and develop critical thinking, reflective analysis and imaginative synthesis through practical engagement in the art, craft and study of film. Students experiment with film and multimedia technology, acquiring the skills and creative competencies required to successfully communicate through the language of the medium. They develop an artistic voice and learn how to express personal perspectives through film. The course emphasizes the importance of working collaboratively, international and intercultural dynamics, and an appreciation of the development of film across time and culture. The film syllabus allows for greater breadth and depth in teaching and learning at HL through an additional assessment task, requiring HL students to reflect on the core syllabus areas to formulate their own intentions for a completed film. They work collaboratively as a core production team in order to effectively communicate on screen.

*IB exam registrations are completed in November. Students electing to withdraw from an exam after registration closes will be charged a fee based on the IB exam fee schedule.*



# Language Acquisition (Spanish)

## GENERAL GUIDELINES FOR WORLD LANGUAGES:

For continued success in Spanish, it is strongly recommended that students earn a grade of 'C' or better before registering for the next level. Each student should consult with his/her current foreign language teacher prior to enrolling for the following year to be certain of accurate placement.

## COLLEGE RECOMMENDATION:

Most colleges recommend that students earn high school credit in two or more consecutive years of the same language. Some colleges require three or more years. Students should check with specific colleges for current admission requirements.

*Students pursuing the full IB Diploma must take Spanish I (grade 9) and Spanish II (grade 10).*



## SPANISH FOR SPANISH SPEAKERS

# 1400, 1401

Grades: 9

2 Semesters/2 Credits

Spanish for Spanish Speakers for speakers who communicate effectively in their home, community language or have lived in a Spanish speaking country for an extended period of time and wish to develop their Spanish language proficiency/competency. A brief oral assessment will determine placement in the program. The course in this track is designed to meet the particular needs of students that already have a strong grasp of the Spanish language. It is a course that validates the linguistic and trans-cultural experiences and knowledge of students in the course. Our goal is to build upon that knowledge and experience by expanding their skills in academic writing and speaking, improving their reading skills, and exploring issues related to identity and culture. *This course will not count towards college language admission requirements.*

## SPANISH I

# 1500, 1501

Grades: 9, 10, 11, 12

2 Semesters/2 Credits

An introduction to the study of Spanish and its culture. Students learn basic Spanish expressions, vocabulary and structural forms. Emphasis is placed on communicating in the present tense in all four modalities (speaking, reading, writing and listening). Students will gain understanding of cultures by making comparisons and connecting with the Spanish-speaking world. Spanish is spoken in the classroom as part of the learning process. Listening for key words and watching for visual clues will aid in understanding. Memorization of terms and their spelling is an essential part of any language course.

## SPANISH II

# 1600, 1601

Grades: 10, 11, 12

2 Semesters/2 Credits;

\*Prerequisite Spanish I

This course offers a more in-depth look at the Spanish language. Students will continue to communicate through speaking, writing, listening and reading activities related to personal topics of daily living in formal and informal settings. Students will continue to explore other cultures in the Spanish speaking world and compare their traditions, practices, and perspectives with their own.

## DP SPANISH SL (YEAR 1)

# 1710, 1711

Grades: 11, 12

2 Semesters/2 Credits;

\*Prerequisite Spanish II

The Level III Spanish class will build student's mastery of previously learned material as they communicate on a variety of interdisciplinary topics. Students will be exposed to more complex verb tenses and grammatical structures. Students will actively develop communicative and cultural proficiency through extensive written and spoken work in response to a variety of authentic texts. Instruction is conducted mainly in Spanish and students will be expected to increase their use of the language as the course progresses.

## DP SPANISH SL (YEAR 2)

# 1810, 1811

Grades: 12

2 Semesters/2 Credits;

Weighed GPA

\*Prerequisite DP Spanish SL Year 1

This course further develops, improves and refines listening, speaking, reading and writing skills through the continued study of the language, literature, and culture of Hispanic countries. Emphasis continues on reading and writing skills in the target language to improve awareness and understanding of the cultural diversity of the Spanish-speaking world. Supplementary materials are implemented to enhance language use. Students experience multiple opportunities to demonstrate proficiency in Spanish in different contexts. Aspects of contemporary Hispanic culture include readings, media, games, and class discussions. Assessment of student performance is identified through written tests, quizzes, and work completion. In addition, students may also be assessed by means of oral tests, spoken dialogues, presentations, short compositions and other displays.

*IB exam registrations are completed in November. Students electing to withdraw from an exam after registration closes will be charged a fee based on the IB exam fee schedule.*

# Mathematics



## GRADE 9

**MYP Non-Linear Algebra**  
or  
**MYP Geometry**

## GRADE 10

**MYP Geometry**  
or  
**Algebra II**  
or  
**Honors Algebra II**

## GRADE 11

**Algebra II**  
**Essentials of Algebra II**  
or  
**Honors Algebra II**  
or  
**DP A & A HL (YR1)**  
or  
**Functions, Stats & Trig**

## GRADE 12

**It is recommended to take a Math elective in Grade 12**  
**Essentials of Algebra II**  
**Functions, Stats & Trig**  
**DP A & A HL (YR2)**  
**DP A & I SL**  
**Topics of Math**

### MYP NON-LINEAR ALGEBRA

# 8000, 8001

Grade: 9

2 Semesters/2 Credits

This course will emphasize the language and properties of algebra, inequalities, linear and non-linear functions, systems of equalities, exponential and quadratic functions, and rational equations and functions. Students are required to have a scientific calculator for this course.

### MYP GEOMETRY

# 8100, 8101

Grades: 9, 10

2 Semesters/2 Credits;

\*Prerequisite: 8th grade Algebra or Non-Linear Algebra

This course will emphasize inductive reasoning as a primary method of learning geometry topics. Topics will include the language of geometry, geometric constructions, congruent, circles, area, Pythagorean Theorem and volume. The student will then apply concepts of shape and space to illustrate and describe the physical world and solve problems.

### ALGEBRA II

# 8306, 8307

Grades: 10, 11

2 Semesters/2 Credits;

\*Prerequisite: Geometry

Students will analyze mathematical patterns, relationships, and use functions to model and solve problems. Concepts covered: linear equations, systems of linear equations and inequalities, matrices and determinants, quadratic equations and parabolas, functions, powers, roots, radicals, exponential and logarithmic functions, polynomials and polynomial functions, rational functions and quadratic relations.

### ESSENTIALS OF ALGEBRA II (Accelerated students are not eligible)

# 8210, 8211

Grades: 11, 12 (Requires teacher approval)

2 Semesters/2 Credits;

\*Prerequisite: Geometry

\*Fulfills Algebra II graduation requirement

This class covers the same material as Algebra II but at a slower pace. This class fulfills the math requirement at RHS but if students are thinking of a four year college, they might want to enroll in regular Algebra II. Students will analyze mathematical patterns, relationships, and use functions to model and solve problems. Concepts covered will be: linear equations, systems of linear equations and inequalities, matrices and determinants, quadratic equations and parabolas, functions, powers, roots, radicals, exponential and logarithmic functions, polynomials and polynomial functions, rational functions and quadratic relations.

### HONORS ALGEBRA II

# 8201, 8202

Grades: 10, 11

2 Semesters/2 Credits

Weighted GPA

\*Prerequisite: Geometry and teacher approval

\*Fulfills Algebra II graduation requirement

This course will emphasize expressions, equations, inequalities, sequence and series, probability and statistics and trigonometry. A major emphasis will be on functions including linear, quadratic, polynomial and radical numbers. Students are required to have a T1-83 or a T1-84 graphing calculator. Leases are available.

### FUNCTIONS, STATISTICS AND TRIGONOMETRY

# 8300, 8301

Grades: 11, 12

2 Semesters/2 Credits (Year long course).

\*Prerequisite: B- or better in Algebra II or Honors Algebra II

The students will study statistical, algebraic and trigonometric concepts through their work with functions. The student will display, describe, transform and interpret numerical information in tables, graphs or equations. The students will then analyze mathematical patterns, relationships and functions to model and solve problems. Students are required to have a T1-83 or a T1-84 graphing calculator for this class.

### TOPICS OF MATH

# 8400

Grade: 12 (Requires teacher approval)

1 Semester/1 Credit

This course is designed for seniors who want to take a math class, but do not have the pre-requisites for other classes. It will cover a variety of topics including but limited to Algebra, Geometry, and Statistics concepts, Accuplacer Prep, ACT Prep, Excel Spreadsheet skills, budget/finance, etc. This class is for students who earned Cs/Ds in Algebra II. This class may not meet the 4th year math requirement for some colleges.

# Mathematics

## **DP ANALYSIS & APPROACHES HL (YEAR 1)**

#8320, 8321

Grade: 11

2 Semesters/2 Credits

Weighted GPA

\*Prerequisite: A- or better in Honors Algebra II. B- or better requires teacher approval.

The topics studied in this course are those traditionally offered in the first full year of Calculus in college. This course is designed for students who wish to take the High-Level IB Mathematics examination. Mathematics HL is a course designed for highly motivated students who seek the challenge of an intensive college level Mathematics course, equivalent to pre-calculus, calculus I, parts of calculus II, collegiate number theory, planar geometry and matrix algebra. The topics studied include limits, continuity, derivatives, and integrals of algebraic and transcendental functions and their applications, advanced Trigonometry, and differential equations. This course is recommended only for those students who anticipate studying Mathematics or a related field in college.

## **DP ANALYSIS & APPROACHES HL (YEAR 2)**

#8322,8323

Grade: 12

2 Semesters/2 Credits

Weighted GPA

\*Prerequisite: DP Analysis & Approaches HL Year 1

\*Students must take Year 1 & Year 2 to be eligible for college credit. If taken for college credit, the student will receive a grade and credit on a college transcript. The External Assessment at the end of Year 2 will determine a student's eligibility for college credit.

The topics studied in this course are those traditionally offered in the first full year of Calculus in college. This course is designed for students who wish to take the High-Level IB Mathematics examination. Mathematics HL is a course designed for highly motivated students who seek the challenge of an intensive college level Mathematics course, equivalent to pre-calculus, Calculus I and parts of Calculus II, collegiate number theory, planar geometry, and matrix algebra. The topics studied include limits, continuity, derivatives, and integrals of algebraic and transcendental functions and their applications, advanced Trigonometry, and differential equations. This course is recommended only for those students who anticipate studying Mathematics or a related field in college.

## **DP APPLICATIONS & INTERPRETATIONS SL**

#8330, 8331

Grade: 12

2 Semesters/2 Credits

Weighted GPA

\*Prerequisite: Geometry, Algebra II or Honors Algebra II with a B- or higher grade and teacher approval.

This course builds on the concepts of Algebra II in preparation for the IB standard-level Applications & Interpretation examination at the end of the course. Applications and Interpretations investigates the core concepts of algebra, statistics, financial math applications, logic, probability, geometry, basic trigonometry, and an introduction to Calculus. Students will produce a project or essay involving higher order mathematics in an area of interest to the student.

*IB exam registrations are completed in November. Students electing to withdraw from an exam after registration closes will be charged a fee based on the IB exam fee schedule.*

# Physical Education & Health

Students are required to take Physical Education or Lifelong Physical Activity and Health & Wellness to complete their graduation requirements.



## Physical Education

### **PHYSICAL EDUCATION (fulfills graduation requirement)**

# 6000

Grades: 9, 10, 11, 12

1 Semester/1 Credit (Recommended grade 10)

This is a course designed for students to put MYP Principles into practice. In addition to units such as Invasive Games, Net Games and Fitness Testing, students will learn strength and conditioning exercises to improve their physical fitness. Students will design SMART goals based on data from fitness assessments and monitor and track their progress throughout the course.

### **LIFELONG PHYSICAL ACTIVITY (fulfills graduation requirement)**

# 6001

Grades: 9, 10, 11, 12

1 Semester/1 Credit (Recommended grade 10)

This course satisfies the Phy-Ed graduation requirement. This course is designed for students to put MYP principles into practice. In addition the content is going to be a variety of motor skills, invasive games, net games, individual activities, that can be applicable to them now but also as they grow throughout their life. Students will also develop physical activity and fitness knowledge to enhance their lifelong personal health and wellness.

### **PEAK PERFORMANCE**

# 6103

Grades: 9, 10, 11, 12

1 Semester/1 Credit

This course is designed for students who have a desire to work on the development of aerobic conditioning and strength training overall health and well-being. Students will develop a cardiovascular/strength program based on fitness assessments and personal fitness goals. The course will primarily utilize the Rocket Power Center.

### **TEAM AND DUAL SPORTS**

# 6104

Grades: 9, 10, 11, 12

1 Semester/1 Credit

This course will enhance students' interest in a variety of team and dual sports. Participation and knowledge of rules and strategy of the game is expected.

*\*\*Students may repeat an elective PE course for credit.*

# Physical Education & Health

*Students are required to take Physical Education or Lifelong Physical Activity and Health & Wellness to complete their graduation requirements.*



## CAREER PATH WAY OPPORTUNITY

For students determining a potential career-related pathway in CNA and/or in pursuit of the IBCP certificate/diploma, refer to page 13 for course options:

## Health

### HEALTH & WELLNESS (previously Health; required for graduation)

#6200

Grade: 9, 10, 11, 12 (Recommended grade 10)

1 Semester/1 Credit

This course will empower students with the skills necessary to develop a healthy lifestyle by improving or maintaining a high level of physical, mental/emotional, and social health. Students will be provided with quality learning experiences that will enable them to take ownership and enhance the quality of everyday life.

### HEALTH SCIENCE CAREERS

# 6300

Grades: 11, 12

1 Semester/1 Credit

This course will explore various health science careers through guest speakers and student presentations. Students will research and prepare a presentation on five different health science careers throughout the course. As a culminating activity, students will complete a detailed research paper on one selected career and interview a professional in the selected career.

### SPORTS SCIENCE

# 6106

Grades: 11, 12

1 Semester/1 Credit

This course will analyze the areas of anatomy and physiology, injury prevention and management, sport in society, and the psychology of sport. Students should be prepared to interact with classmates in hands-on activities and class discussions.

### CERTIFIED NURSING ASSISTANT (CNA)

# 6400

Grades: 11, 12

1 Semester/1 Credit (Offered in the spring)

Prerequisite: Health and Wellness (previously Health)

The Certified Nursing Assistant (CNA) and Home Health Aide (HHA) course provides classroom and clinical training for individuals interested in pursuing direct patient care in hospitals, nursing homes, or home health care settings. As a CNA, students will be qualified to care for the sick, injured, convalescent, and disabled under the supervision of physicians, licensed practical nurses, and registered nurses. The course includes orientation, basic skills assessment tests, classroom/lab training, and hands-on clinical training. Students will be expected to provide hands-on care during clinicals. Emphasis is placed on the development of the knowledge, attitudes, and skills required of the nursing assistant. Upon completion of all course hours and clinicals, students will be eligible to take the state exam (fee provided by RAS), and, upon passing, will be recognized by the State of Minnesota in its registry of Certified Nursing Assistants. This course is a prerequisite for most LPN or RN programs in Minnesota and is valuable to anyone interested in direct patient care. Please note that some clinical hours may be held outside of regular school hours.

# Science



## GRADE 9

### MYP Science 9

#### MYP SCIENCE 9

# 9200,9201

Grade: 9

2 Semesters/2 Credits

MYP Science 9 is composed of segments from the Nature of Science, Geology, Astronomy, and Environmental Science. It is taught in an investigative manner using hands-on laboratory experiences to support instruction. Units of study develop students' conceptual understanding of key science ideas such as relationships, change, and systems and encourage students to grow in their organization, collaboration, and thinking skills. Students practice inquiry through experimental investigations, learn principled thinking through data analysis, and build their knowledge of earth and space systems.

#### MYP CHEMISTRY 10

# 9253, 9254

Grade: 10

2 Semesters/2 Credits;

\*Prerequisite: MYP Physics 9

This inquiry-based science course offers an in-depth exploration of foundational chemistry concepts. Topics include: physical and chemical changes, the mole concept, atomic and quantum theories, gases, chemical reactions, acids and bases, nuclear chemistry, organic chemistry, thermodynamics, chemical kinetics, electrochemistry, oxidation-reduction reactions, and chemical equilibrium. Throughout the course, students will learn to explain observable properties of matter using accepted chemistry laws and theories. Students will also design and analyze their own laboratory investigations in order to explore several of these topics. Hands-on participation and strong skills in basic math/algebra, reading, and writing are all vital for success.

#### MYP CHEMISTRY CONCEPTS

# 9260,9261

Grade: 10

2 Semesters/2 Credits;

\*Prerequisite: MYP Physics 9 AND teacher recommendation

Fulfills chemistry graduation requirement

Chemistry is the study of matter and the changes it undergoes. Students will be introduced to a wide variety of basic chemistry concepts such as states of matter, the makeup of an atom, balancing chemical equations, general nomenclature, and geometric modeling. A special emphasis will focus on reading skills to improve comprehension. This course is designed for students with a desire to improve comprehension in mathematics and reading and for students who learn best through hands-on activities.

## GRADE 10

### MYP Chemistry 10 or MYP Chemistry Concepts

## GRADE 11

### Biology or Biology HL (YR1)

#### BIOLOGY

#9100, 9102

Grade: 11

2 Semesters/2 Credits

\*Prerequisite: MYP Chemistry 10

Biology is the study of living organisms and the interactions they have with each other and their environment. Students will gain understanding of life at the cellular level as well as at the macro-biological level. This understanding will be acquired through practical experience in the classroom, laboratory work, and field study. Specific areas to be studied in detail include, Nature of Science, Biochemistry, Cell Respiration & Photosynthesis, Cells & Cell Transport, DNA & Proteins, Cell Division, Meiosis, Genetics, Evolution, and Ecology.

#### DP BIOLOGY HL (YEAR 1)

#9330, 9331

Grade: 11

2 Semesters/2 Credits

Weighted GPA

\*Prerequisite: MYP Chemistry 10

This is the first year in a two-year sequence. The course moves at an accelerated pace as it meets all the requirements of the IB curriculum. All of the topics are common to a Freshman-Level college course. Topics covered include: cellular biology, molecular biology, genetics, human physiology, evolution and biodiversity, ecology, plus one additional topic (chosen from biotechnology and bioinformatics, ecology and conservation, or human physiology). After successful completion of this course, students will have the option of taking DP HL Biology YR 2, which includes the DP Exam, their senior year.

*IB exam registrations are completed in November. Students electing to withdraw from an exam after registration closes will be charged a fee based on the IB exam fee schedule.*

## ELECTIVES

*See description for grade level*

**Astronomy**

**Environmental Science**

**Forensic Science**

**DP Biology HL (YR2)**

**DP Physics SL / CIS**



# Science

## DP BIOLOGY HL (YEAR 2)

#9350,9351

Grade: 12

2 Semesters/2 Credits

Weighted GPA

\*Prerequisite: DP Biology SL/HL (Year 1)

\*Assessments: *Students are expected to complete the IB HL requirements and take the IB HL exam that correlates with this course.*

This course is year 2 of a 2-year biology course sequence designed to give students an in-depth biology curriculum equivalent to a first year college biology course. The goal is to prepare students to take the IB HL examination at the end of the second semester. Students will be expected to do extensive laboratory work as well as reading and writing as a part of this course. Units of study include nucleic acids, metabolism, cell respiration and photosynthesis, plant biology, genetics and evolution, animal physiology, and ecology.

## DP PHYSICS SL/ COLLEGE PHYSICS

#9420,9421

Grade: 11,12

2 Semesters/2 Credits

Weighted GPA

\*Prerequisite: Algebra II or Honors Algebra II

\*This is a co-seated class for Concepts in Physics SCSU Phys 103.

\*Dual credit through St. Cloud State University -3 college credits for 12th grade students. Minimum 3.0 GPA required.

\*Students can take the course for college/high school credit.

If taken for college credit, the student will receive a grade and credit on a college transcript.

DP Physics SL is a year-long course covering a wide range of topics, including measurement and uncertainties, mechanics, thermal physics, waves, electricity, magnetism, atomic physics, energy production and astrophysics. Students will not only be assessed on their knowledge of the concepts in these topics in class and through the IB external assessment, but will also be asked to show their understanding and application of the scientific method in their Internal Assessment. The process involved with the IB Internal Assessment includes exploration, analysis, evaluation, and communication of findings in a topic of their choice related to physics.

## ASTRONOMY

# 9400

Grades: 10, 11, 12

1 Semester/1 Credit

Astronomy is the branch of science that deals with celestial objects, space, and the physical universe as a whole.

While not all topics in astronomy can be studied in-depth in one semester, selected topics will be presented in a thematic style. The topics in this elective course include but are not limited to the daytime sky, the nighttime sky, constellations, distances sizes and angles, stars and stellar evolution, along with galaxies and the universe.

*IB exam registrations are completed in November. Students electing to withdraw from an exam after registration closes will be charged a fee based on the IB exam fee schedule.*

## ENVIRONMENTAL SCIENCE

# 9405

Grades: 9, 10, 11, 12

1 Semester/1 Credit

Environmental Science is the application of earth, life, and physical science in relation to human behavior, actions, and impacts. Students will develop critical thinking skills and be able to apply knowledge gained in other disciplines and apply them to human interactions with the environment. Potential topics to explore include: ecosystem interactions, population dynamics and human population trends, renewable and nonrenewable energy sources, global climate change, and loss of biodiversity. Students will also learn how scientific information is used to help make decisions associated with environmental issues.

## FORENSIC SCIENCE

# 9401

Grades: 9, 10, 11, 12

1 Semester/1 Credit

Forensic science is the application of biology, chemistry, physics, and the earth sciences to the area of criminal investigation. Students will develop critical thinking skills and be able to apply knowledge gained in other disciplines to the process of solving crimes. Emphasis is placed on case studies, laboratory activities, discussions, and simulations. Topics investigated include: history of forensic science, the crime scene, physical evidence, fingerprints, hair, fibers, and blood evidence.



# 2023-24 Course Registration Overview

DEPARTMENT	ELEC	COURSE TITLE	COURSE NUMBER(s)	PREREQUISITE	CREDITS	AVAILABLE TO GRADES:			
<b>ACADEMIC SUPPORT</b> (Page 17)	E	AVID 9	0100, 0101	Application and Interview	2	9			
	E	AVID 10	0110, 0111	AVID 9 or application and interview	2		10		
	E	AVID 11	0120, 0121	AVID 10	2			11	
	E	AVID 12	0130, 0131	AVID 11	2				12
<b>ARTS: PERFORMING</b> (Page 18-19)	E	Varsity Band	4500, 4501		2	9	10	11	12
	E	Concert Band	4600, 4601		2		10	11	12
	E	Wind Ensemble	4700, 4701	Auditioned Ensemble	2		10	11	12
	E	DP Music SL	4900, 4901	Wind Ensemble, Concert Band , Concert Choir or Belle Canto Choir concurrently	2			11	12
	E	Rocket Choir	4506, 4507		2	9	10	11	12
	E	Concert Choir	4606, 4607		2		10	11	12
	E	Belle Canto Choir	4610,4611	Auditioned Choir	2		10	11	12
	E	Music Through Technology	4400		1		10	11	12
	E	Musical Theater	4420		1	9	10	11	12
<b>ARTS: VISUAL</b> (Page 20)	E	Style Studio	4012		1	9	10	11	12
	E	Drawing	4105		1	9	10	11	12
	E	MYP Media Art	4000		1	9	10	11	12
	E	Painting Studio	4110		1		10	11	12
	E	DP Visual Arts SL/ HL Yr 1	4200,4201	Drawing, MYP Media Art AND Style Studio or with teacher approval	2			11	12
	E	DP Visual Arts SL/ HL Yr 2	4300,4301	DP Visual Arts SL/HL Yr 1					12
<b>CAREER &amp; TECHNICAL EDUCATION: (DESIGN):</b>  <b>AGRICULTURE</b> (Page 21-22)	E	Agri-Business	9500		1	9	10	11	12
	E	Animal Science	9510		1	9	10	11	12
	E	Companion Animals	9535	Animal Science	1	9	10	11	12
	E	Food Science	9522		1		10	11	12
	E	Intro to Horticulture	9520		1	9	10	11	12
	E	Natural Resources	9525		1	9	10	11	12
	E	Ag Coop On-the-Job (OJT)	9550		1			11	12
	E	Moo to You: Dairy Science	9620		1	9	10	11	12
	E	College Animal Science	9630	Top 50% of class or teacher approval. 10th grade top 20%	1			11	12
	E	Landscape Design & Construction	9640		1			11	12
	E	Veterinary Science	9536		1			11	12

DEPARTMENT	ELEC	COURSE TITLE	COURSE NUMBER(s)	PREREQUISITE	CREDITS	AVAILABLE TO GRADES:			
<b>CAREER &amp; TECHNICAL EDUCATION: (DESIGN):</b>  <b>BUSINESS (Page 23)</b>	E	Accounting	2502		1		10	11	12
	E	Computer Applications	2501		1	9	10	11	12
	E	Intro to Business	2500		1	9	10	11	12
	E	Marketing	2503		1	9	10	11	12
	E	Personal Finance	2510		1		10	11	12
	E	Personal/Professional Skills 11	2520		1			11	
	E	Personal/Professional Skills 12	2700	Personal/Professional Skills 11	1				12
	E	DP Business Management SL	2800,2801		2			11	12
<b>CAREER &amp; TECHNICAL EDUCATION: (DESIGN):</b>  <b>TECHNICAL ED (Page 24)</b>	E	General Metals	2100		1	9	10	11	12
	E	General Woodworking	2101		1	9	10	11	12
	E	Machine Trades Exploration I	2103		1	9	10	11	12
	E	Advanced Metals	2104	General Metals	1	9	10	11	12
	E	Advanced Woodworking	2105	General Woodworking	1	9	10	11	12
	E	Machine Trades Exploration II	2111	Machine Trades Exploration I	1		10	11	12
	E	General Construction	2200	General Woodworking	1		10	11	12
<b>INDIVIDUALS AND SOCIETIES (SOCIAL STUDIES) (Page 25-26)</b>		MYP U.S. History 9 (pre-populated onto 9th grade schedule)	7150, 7151		2	9			
		MYP World History/ Geography 10 (pre-populated onto 10th grade schedule)	7310, 7311		2		10		
		Economics and Government	7205, 7206		2			11	
		DP Econ SL/College Economics	7207, 7208	3.0 GPA requirement	2			11	12
		DP European History HL / College European History-Yr1	7320, 7321		2			11	
		DP European History HL/ College European History-Yr2	7322,7323	DP European History HL/College European History– (Year 1) 3.0 GPA requirement	2				12
		Civics	7450		1				12
	E	Psychology I	7404		1			11	12
	E	Theory of Knowledge 11	7411		1			11	
	E	Theory of Knowledge 12	7412	Theory of Knowledge 11	1				12
	E	History In Popular Culture	7451		1		10	11	12

DEPARTMENT	ELEC	COURSE TITLE	COURSE NUMBER(s)	PREREQUISITE	CREDITS	AVAILABLE TO GRADES:			
<b>LANGUAGE AND LITERATURE (ENGLISH)</b> (Page 27-28)		MYP English 9 (pre-populated onto 9th grade schedule)	3000, 3001		2	9			
		MYP English 10 (pre-populated onto 10th grade schedule)	3100, 3101		2		10		
		MYP Honors English 10	3600,3601		2		10		
		DP Language & Literature HL (Year 1)	3206, 3207		2			11	
		DP Language & Literature SL (Year 1)	3216, 3217		2			11	
		DP Lang & Lit HL (Year 2)/ CIS Comp/ CIS Classic Lit	3208,3209	DP Language & Literature HL (Year 1) 3.0 GPA requirement	2				12
		DP Language & Literature SL (Year 2)	3218,3219	DP Language & Literature SL (Year 1) 3.0 GPA requirement	2				12
	E	Leadership and Personal Development	9545		1	9	10	11	12
	E	Mythology	3401		1	9	10	11	12
	E	Intro to Film	3220		1		10	11	12
	E	DP Film SL	3221, 3222	Intro to Film	2			11	12
	E	DP Film SL & HL (Year 2)	3212,3213	DP Film SL & HL (Year 1)	2				12
<b>LANGUAGE ACQUISITION</b> (Page 29)	E	Spanish for Spanish Speakers	1400,1401	Teacher recommendation	2	9			
	E	Spanish I	1500, 1501		2	9	10	11	12
	E	Spanish II	1600, 1601	Spanish I	2		10	11	12
	E	DP Spanish SL (Year 1)	1710, 1711	Spanish II	2			11	12
	E	DP Spanish SL (Year 2)	1810,1811	DP Spanish SL (Year 1)	2				12
<b>MATHEMATICS</b> (Page 30-31)		MYP Non-Linear Algebra (pre-populated onto 9th grade schedule)	8000,8001		2	9			
		MYP Geometry (pre-populated onto 10th grade schedule)	8100, 8101	Non Linear or 8th grade Algebra	2	9	10		
		Algebra II	8306, 8307	MYP Geometry	2		10	11	
		Essentials of Algebra II	8210, 8211	MYP Geometry	2			11	12
		Honors Algebra II	8201, 8202	MYP Geometry & teacher approval	2		10	11	
	E	Functions, Statistics and Trig	8300, 8301	Algebra II or Honors Algebra II with B– or higher	2			11	12
	E	Topics of Math	8400	Requires teacher approval	1				12
	E	DP Analysis & Approaches HL (Year 1)	8320, 8321	A- or better in Honors Algebra II	2			11	
	E	DP Analysis & Approaches HL (Year 2)	8322,8323	DP Analysis & Approaches HL (Year 1)	2				12
	E	DP Applications & Interpretations SL	8330,8331	Geometry, Algebra II or Honors Algebra II with B– or higher	2				12

DEPARTMENT	ELEC	COURSE TITLE	COURSE NUMBER(s)	PREREQUISITE	CREDITS	AVAILABLE TO GRADES:				
<b>PHYSICAL EDUCATION &amp; HEALTH</b> (Page 32-33)		Physical Education	6000	Fulfills graduation requirement	1	9	10	11	12	
		Lifelong Physical Activity	6001	Fulfills graduation requirement	1	9	10	11	12	
	E	Peak Performance	6103		1	9	10	11	12	
	E	Team and Dual Sports	6104		1	9	10	11	12	
		Health & Wellness	6200	Required for graduation	1	9	10	11	12	
	E	Health Science Careers	6300		1			11	12	
	E	Sports Science	6106		1			11	12	
	E	Certified Nursing Assistant (CNA)	6400	Health and Wellness (previously Health)	1			11	12	
<b>SCIENCE</b> (Page 34-35)		MYP Science 9 (pre-populated onto 9th gr. schedule)	9200,9201		2	9				
		MYP Chemistry 10 (pre-populated onto 10th gr. schedule)	9253, 9254	MYP Science 9	2		10			
		MYP Chemistry Concepts	9260,9261	MYP Science 9, teacher approval	2		10			
		Biology	9100, 9102	MYP Chemistry 10	2			11		
		DP Biology HL (Year 1)	9330, 9331	MYP Chemistry 10	2			11		
	E	DP Biology HL (Year 2)	9350,9351	DP Biology SL/HL (Year 1) 3.0 GPA requirement	2					12
	E	DP Physics SL/ College Physics	9420,9421	Algebra II or Honors Algebra II 3.0 GPA requirement	2			11	12	
	E	Astronomy	9400		1		10	11	12	
	E	Environmental Science	9405		1	9	10	11	12	
	E	Forensic Science	9401		1	9	10	11	12	

# Activities Offered Throughout the School Year

Rockford Area Schools offers a wide variety of extracurricular activities and sports for students in grades 7-12 to participate in throughout the school year. Approximately 69% of grade 7-12 students participate in at least one extracurricular activity with 50% participating in two or more. Activities registration information, fee information, and coach information can be found on the Activities Page on the Rockford Area Schools website.

## FALL

- Cross Country (girls & boys)
- Cheerleading
- Football
- Soccer (boys)
- Soccer (girls)
- Tennis (girls)
- Volleyball

## WINTER

- Alpine Ski (girls) - Alpine Ski is a training agreement with Breakaways Alpine Ski Team, St. Cloud, MN
- Basketball (boys)
- Basketball (girls)
- Cheerleading
- Dance Team
- Gymnastics
- Hockey (girls & boys) - Girls and boys hockey is offered through a cooperative agreement with Delano High School. For information, contact the Delano Activities office at 763-972-7601 x1914.
- Wrestling



## SPRING

- Baseball
- Golf (boys)
- Golf (girls)
- Lacrosse (girls & boys) - Boys and girls lacrosse is offered through a cooperative agreement with Delano High School. For information, contact the Delano Activities office at 763-972-7601 x1914.
- Softball
- Tennis (boys)
- Track & Field
- Trap Shooting

## FINE ARTS & OTHER ACTIVITIES

- Band (Varsity, Concert, Jazz, Pep, Marching, Flag Twirlers, Major/Majorette)
- Choir (Rocket Choir, Concert Choir)
- DECA
- Educators Rising
- Essence
- Future Farmers of America (FFA)
- Link Crew
- Musical
- Musical Pit Orchestra
- National Honor Society
- One-Act Play
- Robotics
- Speech
- Step Up
- STRIVE
- Student Council
- Team Managers/Statisticians - Interested students should inquire with the coach
- Yearbook

