

# **2021-2022 Ennis ISD COVID-19 Protocols**

(August 10, 2021)



The health and safety of all Ennis ISD students, staff, and visitors is the top priority as we begin the 2021-2022 school year. At EISD during the 2020-2021 school year we were very fortunate to have a limited number of COVID-19 cases.

According to the Texas Education Agency, data from the 2020-2021 school year showed very low COVID-19 transmission rates in a classroom setting and data demonstrating lower transmission rates among children than adults. EISD will continue to monitor guidance from TEA, along with state and local health departments to ensure we are following all mandates and keeping our students, staff, and visitors safe.

Governor Abbott has mandated that schools may not require individuals to wear a facemask or be vaccinated to enter district facilities. The CDC recommends individuals wear masks while indoors. This will be an individual decision for each student, staff member, or visitor. All individuals will be treated with respect regarding their decision to wear a mask or not.

Due to federal health privacy guidelines, we are unable to give any information about a positive COVID-19 student or employee. No person will be required or asked to identify their vaccination status to Ennis ISD.

Parents should screen their children each morning for symptoms and do not send them to school if they have symptoms. If you wish for your child who is above the age of 12 to receive the COVID-19 vaccine, please contact your child's school nurse and they can assist in providing information on how and where to obtain a COVID-19 vaccine.

## **Individuals Who Are Positive For COVID-19**

1. Parents must ensure they do not send a child to school if the child has COVID-19 symptoms or is test-confirmed with COVID-19.
2. If positive and symptomatic, students may not return to school until 10 days have passed since symptom onset, must be fever free, and other symptoms have improved.
3. Individuals who test positive for COVID-19 but do not have any symptoms (asymptomatic) must stay home until 10 days after the day of a positive test result.
4. Parents should contact the school nurse via email or phone call to report their child's positive COVID-19 case.

### **Individuals With Symptoms But Are Not Positive For COVID-19**

1. Individuals who have symptoms (fever greater than 100 degrees, loss of taste or smell, persistent cough, difficulty breathing, diarrhea, vomiting, etc.) should contact the campus school nurse and monitor their child's symptoms at home. The individual may return to campus if they are not COVID-19 positive and are symptom free for 24 hours.
2. If your child has been tested for COVID-19, we encourage you to keep your child at home until you have received the results. Once the child has received a negative result, they may return to school.

### **Communication**

When there is a positive case on a campus, the following procedures for communication will be in place:

1. When there is a positive case of COVID-19 in an early childhood, elementary, or intermediate classroom, the teacher in the homeroom class will send a classroom parent communication through Skyward informing them of the positive case. This correspondence does not mean all students in the class have been in close contact with that individual.
2. When there is a positive case of COVID-19 on the junior high or high school campus, a parent email will be sent to all campus parents informing them of the positive case. This correspondence does not mean all students on the campus have been in close contact with that individual. *(The ECC, Elem, & Inter campuses will receive classroom notifications due to these students being more self-contained than junior high & high school.)*
3. The district will maintain a dashboard that will show the number and percentages of positive COVID-19 cases per campus as long as it is relevant.
4. If an individual who has been in a school is test-confirmed to have COVID-19, the school must notify its local health department and must submit a report to the Texas Department of State Health Services each week.

### **Close Contact and Contact Tracing**

1. Parents should monitor students who were in a class or on campus with a positive case. However, they are allowed to continue to attend school but wearing a mask is recommended.
2. Staff will not conduct contact tracing reviews and individuals will not be excluded or required to quarantine from school or work if they have been in close contact and show no symptoms.

### **Mitigation Plan**

1. Encouraging hand washing throughout the day.
2. Provide hand sanitizer in classrooms and hallways.
3. Individuals should stay home when they have signs of any infectious illness.
4. Facilities cleaned daily.
5. Limit on nonessential visitors and volunteers on campus during the school day.
6. Inform individuals that wearing a mask is recommended but not required.
7. Bottle Filling stations will be utilized when feasible.

### **Student Attendance**

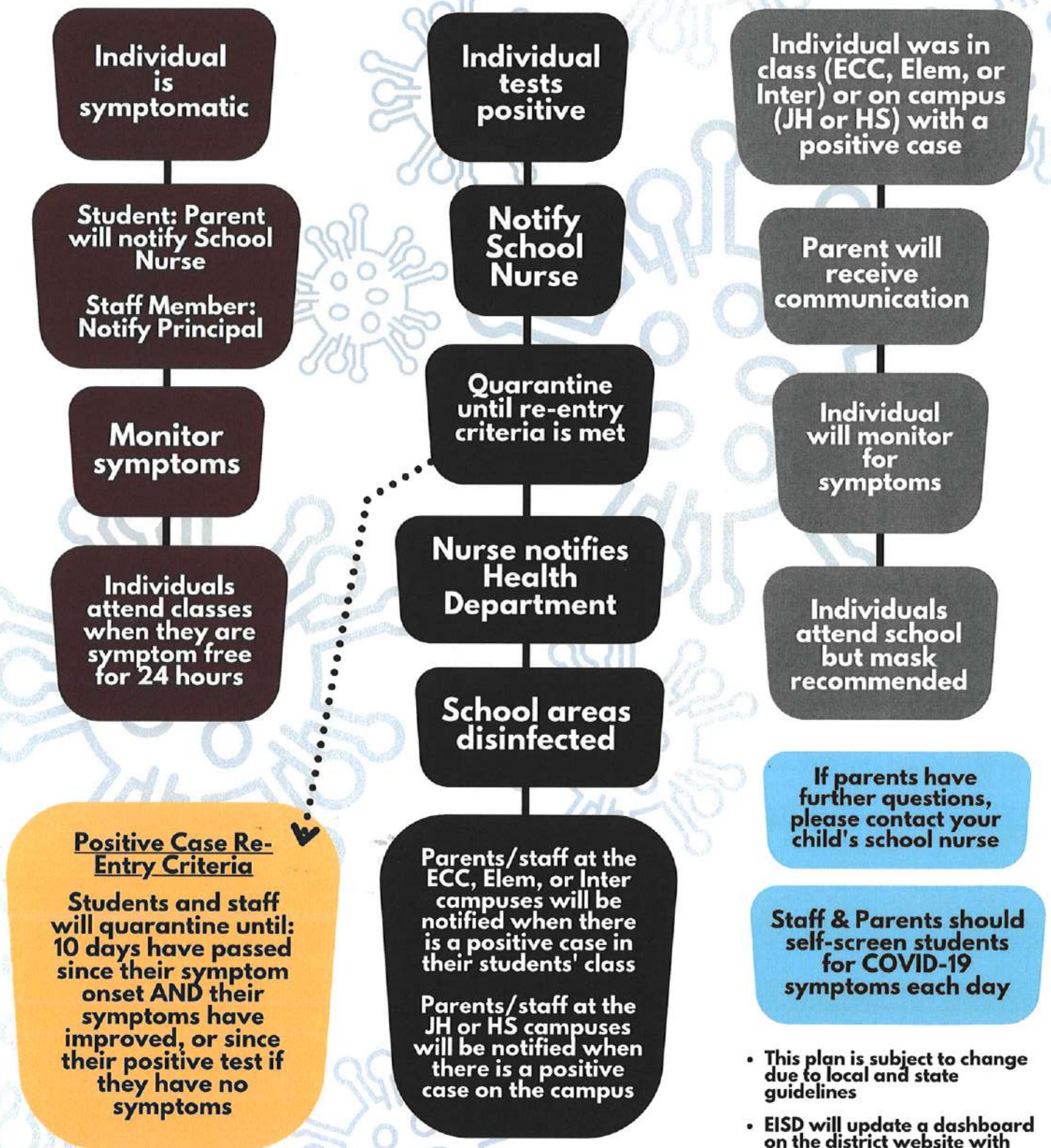
1. When students are absent due to any illness, including COVID-19, they will be counted absent (excused) for attendance purposes if they provide a note from a physician.
2. If a parent chooses to have their student stay home due to being in proximity of a positive case but the student has no symptoms, the parent will need to contact the school nurse.
3. Even though students will be counted absent, they will be able to access their classroom Canvas account and will have the opportunity to keep up with classroom assignments. Students will have an opportunity to complete make-up work once they return to school as well.
4. EISD will only provide in-person instruction.

***\*The EISD plan and protocols are subject to change as the year progresses. If you have questions concerning the EISD COVID-19 protocols, please contact the school nurse on your child's campus.***

**\*If you wish for your child who is above the age of 12 to receive the COVID-19 vaccine, please contact your child's school nurse and they can assist in providing information on how and where to obtain a COVID-19 vaccine.**



# COVID-19 Protocol Map



- This plan is subject to change due to local and state guidelines
- EISD will update a dashboard on the district website with positive cases