

## 2017-18 SES Data by School

### Introduction to *Schools by SES Distribution Data*

#### Why is the socioeconomic status (SES) make up of a school's student population important?

The Board of Education's goals for student assignment reference equitable access to quality schools and decreasing the number of schools with high concentrations of poor and high needs students.

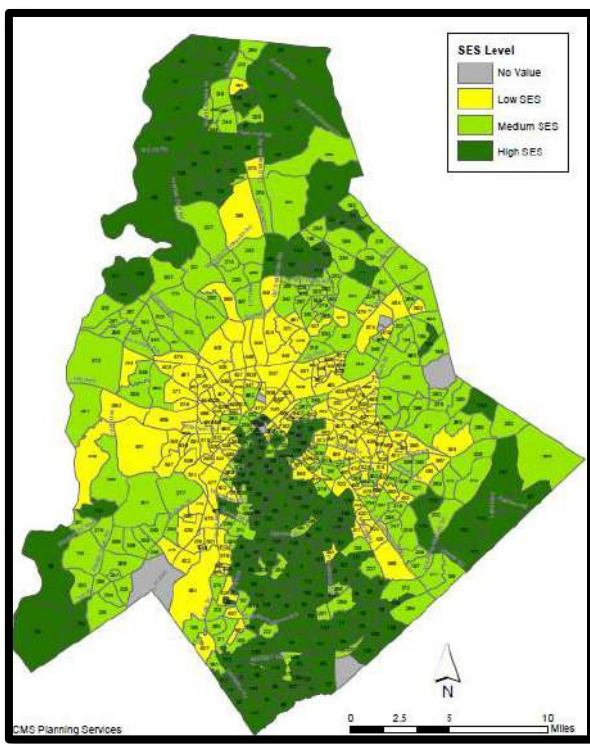
Factors such as family income, parental education attainment and English language ability can, together, influence learning environments. Individual student capacity and potential for learning is *not* correlated to socioeconomic status, but rather there are group effects when large concentrations of students who share similar socioeconomic factors learn together.

#### How does CMS define SES?

During the fall and winter of 2016, the CMS Board of Education identified a number of social and economic factors that, together, may influence the learning environment. Data associated with the identified factors is readily available from the United States Census (Census) and related American Community Survey (ACS).

The identified factors are:

- English Language Ability (i.e., whether or not English is “spoken” very well in the home)
- Family Composition (i.e., is the home a single or multi-parent home)
- Family Income
- Home Ownership
- Parental Education Attainment



There are 548 block groups, small geographic regions defined by the US Census Bureau, in Mecklenburg County with at least one CMS student resident. CMS assesses each block group relative to the others for each of the 5 identified SES factors. Block groups were then ranked 1 – 548 based on their average score, and divided into 3 equally sized groups.

Blocks 1 – 182 are designated “high SES” and associated with higher incomes and educational attainment, lower incidences of English “not spoken very well” in the home and single parent households, and higher instances of home ownership; these are factors associated with educational advantages.

Blocks 183 – 367 are designated “medium SES” and blocks 368 – 548 are designated “low SES.”

It is important to note that these designations are not absolute. That is, CMS did not set an income or education level below which a block group is considered “low SES” and above which it is

considered “medium” or “high SES.” Rather, the designations are relative. That is, CMS assessed each block group *relative* to the all the others.

## 2017-18 SES Data by School

### **How is SES distribution for a given school calculated?**

Each CMS student's home address is geocoded to one of the identified 548 block groups in Mecklenburg County, and each of those block groups has a designation as either high, medium or low SES.

Looking at all the addresses assigned to a given school, and all the block groups associated with those addresses, CMS is able to determine the SES distribution of a school's attending population.

### **Are there limitations to the SES data?**

There are a few limitations to the data. And while the limitations are minor and do not mean the data is not useful for CMS' purposes, it is important to acknowledge them.

The data is specific to the block group medians for each of the factors. It would certainly be more accurate if CMS was able to assess each of the five SES factors for individual student households. Barring the ability to do so, the median data available via the Census and ACS is the best proxy.

The most recent ACS data was released in 2015. And while two years is well within the acceptable range for using the data, it is worth noting that changes in some Mecklenburg County communities may not be reflected in the data.

2017-18 SES by

Row Labels	Low SES		Medium SES		High SES		No Data		Total Students	Total %
	Students	%	Students	%	Students	%	Students	%		
Albemarle Road Elementary	698	63.80%	395	36.11%		0.00%	1	0.09%	1,094	100.00%
Albemarle Road Middle	748	67.63%	354	32.01%		0.00%	4	0.36%	1,106	100.00%
Alexander Graham Middle	284	19.39%	213	14.54%	966	65.94%	2	0.14%	1,465	100.00%
Allenbrook Elementary	511	99.42%	2	0.39%		0.00%	1	0.19%	514	100.00%
Ardrey Kell High	11	0.34%	144	4.52%	3,017	94.61%	17	0.53%	3,189	100.00%
Ashley Park PreK-8 School	491	89.76%	53	9.69%	2	0.37%	1	0.18%	547	100.00%
Bailey Middle	133	8.27%	391	24.30%	1,082	67.25%	3	0.19%	1,609	100.00%
Bain Elementary	13	1.39%	398	42.57%	519	55.51%	5	0.53%	935	100.00%
Ballantyne Elementary		0.00%	81	9.53%	765	90.00%	4	0.47%	850	100.00%
Barnette Elementary	14	1.85%	175	23.09%	563	74.27%	6	0.79%	758	100.00%
Barringer Academic Center	303	56.32%	69	12.83%	162	30.11%	4	0.74%	538	100.00%
Berewick Elementary	25	3.31%	501	66.36%	228	30.20%	1	0.13%	755	100.00%
Berryhill School	390	72.76%	146	27.24%		0.00%		0.00%	536	100.00%
Beverly Woods Elementary	12	1.61%	148	19.89%	582	78.23%	2	0.27%	744	100.00%
Billingsville Elementary	310	95.38%	10	3.08%	3	0.92%	2	0.62%	325	100.00%
Blythe Elementary	269	23.89%	665	59.06%	188	16.70%	4	0.36%	1,126	100.00%
Briarwood Elementary	748	99.20%	4	0.53%	2	0.27%		0.00%	754	100.00%
Bruns Academy	629	89.60%	66	9.40%	3	0.43%	4	0.57%	702	100.00%
Butler High	383	18.02%	1374	64.63%	359	16.89%	10	0.47%	2,126	100.00%
Carmel Middle	341	31.14%	110	10.05%	644	58.81%		0.00%	1,095	100.00%
Cato Middle College High	55	22.09%	141	56.63%	53	21.29%		0.00%	249	100.00%
Chantilly Montessori	61	20.40%	131	43.81%	104	34.78%	3	1.00%	299	100.00%
Charlotte Engineering Early College-UNCC	101	32.69%	142	45.95%	66	21.36%		0.00%	309	100.00%
Charlotte Teacher Early College	18	36.73%	22	44.90%	9	18.37%		0.00%	49	100.00%
Clear Creek Elementary	11	2.23%	345	69.98%	135	27.38%	2	0.41%	493	100.00%
Cochrane Collegiate Academy	875	94.90%	42	4.56%	2	0.22%	3	0.33%	922	100.00%
Collinswood Language Academy	291	36.42%	323	40.43%	185	23.15%		0.00%	799	100.00%
Community House Middle	3	0.16%	193	10.47%	1,640	88.94%	8	0.43%	1,844	100.00%
Cornelius Elementary	122	20.10%	170	28.01%	315	51.89%		0.00%	607	100.00%
Cotswold Elementary	195	24.75%	149	18.91%	444	56.35%		0.00%	788	100.00%
Coulwood STEM Academy	156	20.97%	569	76.48%	19	2.55%		0.00%	744	100.00%
Crestdale Middle	104	13.59%	231	30.20%	427	55.82%	3	0.39%	765	100.00%
Croft Community Elementary	21	3.90%	134	24.91%	383	71.19%		0.00%	538	100.00%

2017-18 SES by

Row Labels	Low SES		Medium SES		High SES		No Data		Total Students	Total %
	Students	%	Students	%	Students	%	Students	%		
Crown Point Elementary	229	33.98%	421	62.46%	22	3.26%	2	0.30%	674	100.00%
David Cox Road Elementary	13	2.27%	522	91.26%	33	5.77%	4	0.70%	572	100.00%
Davidson Elementary	5	0.71%	149	21.16%	544	77.27%	6	0.85%	704	100.00%
Devonshire Elementary	619	99.84%	1	0.16%		0.00%		0.00%	620	100.00%
Dilworth Elementary	118	17.43%	51	7.53%	508	75.04%		0.00%	677	100.00%
Druid Hills Academy	501	99.01%	3	0.59%	1	0.20%	1	0.20%	506	100.00%
East Mecklenburg High	1,274	61.34%	454	21.86%	347	16.71%	2	0.10%	2,077	100.00%
Eastover Elementary	90	20.00%	93	20.67%	263	58.44%	4	0.89%	450	100.00%
Eastway Middle	755	92.98%	52	6.40%	2	0.25%	3	0.37%	812	100.00%
eLearning Academy	40	16.74%	92	38.49%	107	44.77%		0.00%	239	100.00%
Elizabeth Lane Elem	3	0.27%	483	44.19%	600	54.89%	7	0.64%	1,093	100.00%
Elizabeth Traditional Elem	212	40.61%	240	45.98%	70	13.41%		0.00%	522	100.00%
Elon Park Elementary	4	0.35%	9	0.80%	1,096	97.25%	18	1.60%	1,127	100.00%
Endhaven Elementary	80	10.72%	122	16.35%	540	72.39%	4	0.54%	746	100.00%
First Ward Creative Arts Acad	367	63.60%	191	33.10%	19	3.29%		0.00%	577	100.00%
Francis Bradley Middle	103	9.97%	422	40.85%	506	48.98%	2	0.19%	1,033	100.00%
Garinger High	1,733	94.75%	88	4.81%	8	0.44%		0.00%	1,829	100.00%
Grand Oak Elementary	5	0.83%	24	4.00%	568	94.67%	3	0.50%	600	100.00%
Greenway Park Elementary	399	82.78%	64	13.28%	18	3.73%	1	0.21%	482	100.00%
Harding University High	1,551	93.38%	100	6.02%	9	0.54%	1	0.06%	1,661	100.00%
Harper Middle College High	38	20.88%	84	46.15%	60	32.97%		0.00%	182	100.00%
Hawk Ridge Elementary	2	0.23%	88	9.91%	792	89.19%	6	0.68%	888	100.00%
Hawthorne High	126	48.65%	104	40.15%	28	10.81%	1	0.39%	259	100.00%
Hickory Grove Elementary	536	91.00%	51	8.66%	1	0.17%	1	0.17%	589	100.00%
Hidden Valley Elementary	893	98.24%	12	1.32%	3	0.33%	1	0.11%	909	100.00%
Highland Creek Elementary	15	2.50%	247	41.17%	334	55.67%	4	0.67%	600	100.00%
Highland Mill Montessori	63	26.25%	150	62.50%	24	10.00%	3	1.25%	240	100.00%
Highland Renaissance Academy	356	82.79%	69	16.05%	3	0.70%	2	0.47%	430	100.00%
Hopewell High	230	13.91%	932	56.38%	487	29.46%	4	0.24%	1,653	100.00%
Hornets Nest Elementary	155	24.64%	472	75.04%		0.00%	2	0.32%	629	100.00%
Huntersville Elementary	198	24.47%	122	15.08%	487	60.20%	2	0.25%	809	100.00%
Huntingtowne Farms Elementary	617	80.55%	100	13.05%	49	6.40%		0.00%	766	100.00%
Idlewild Elementary	716	70.54%	275	27.09%	24	2.36%		0.00%	1,015	100.00%
Independence High	808	33.06%	1197	48.98%	433	17.72%	6	0.25%	2,444	100.00%

2017-18 SES by

Row Labels	Low SES		Medium SES		High SES		No Data		Total Students	Total %
	Students	%	Students	%	Students	%	Students	%		
Irwin Academic Center	90	21.23%	199	46.93%	132	31.13%	3	0.71%	424	100.00%
J H Gunn Elementary	621	83.47%	121	16.26%	1	0.13%	1	0.13%	744	100.00%
J M Alexander Middle	99	10.84%	455	49.84%	359	39.32%		0.00%	913	100.00%
J T Williams Secondary Montessori	33	19.88%	85	51.20%	47	28.31%	1	0.60%	166	100.00%
J.V. Washam Elementary	9	0.83%	454	41.88%	619	57.10%	2	0.18%	1,084	100.00%
James Martin Middle	524	49.48%	500	47.21%	33	3.12%	2	0.19%	1,059	100.00%
Jay M Robinson Middle	7	0.59%	45	3.78%	1,131	94.88%	9	0.76%	1,192	100.00%
Joseph W Grier Academy	254	33.20%	509	66.54%	2	0.26%		0.00%	765	100.00%
Kennedy Middle	83	8.47%	752	76.73%	141	14.39%	4	0.41%	980	100.00%
Lake Wylie Elementary	15	2.33%	624	97.05%	4	0.62%		0.00%	643	100.00%
Lansdowne Elementary	262	47.64%	112	20.36%	173	31.45%	3	0.55%	550	100.00%
Lawrence Orr Elementary	676	97.55%	16	2.31%	1	0.14%		0.00%	693	100.00%
Lebanon Road Elementary	378	50.33%	335	44.61%	36	4.79%	2	0.27%	751	100.00%
Levine Middle College High	26	10.04%	109	42.08%	124	47.88%		0.00%	259	100.00%
Lincoln Heights Academy	53	60.23%	29	32.95%	6	6.82%		0.00%	88	100.00%
Long Creek Elementary	25	5.51%	425	93.61%	3	0.66%	1	0.22%	454	100.00%
Mallard Creek Elementary	55	8.49%	447	68.98%	146	22.53%		0.00%	648	100.00%
Mallard Creek High	39	1.50%	1760	67.59%	798	30.65%	7	0.27%	2,604	100.00%
Marie G Davis	355	70.02%	140	27.61%	10	1.97%	2	0.39%	507	100.00%
Martin Luther King Jr Middle	760	81.02%	178	18.98%		0.00%		0.00%	938	100.00%
Matthews Elementary	185	19.43%	379	39.81%	377	39.60%	11	1.16%	952	100.00%
McAlpine Elementary	19	3.59%	189	35.73%	319	60.30%	2	0.38%	529	100.00%
McClintock Middle	778	70.41%	205	18.55%	119	10.77%	3	0.27%	1,105	100.00%
McKee Road Elementary	10	1.97%	74	14.57%	414	81.50%	10	1.97%	508	100.00%
Merancas Middle College High	13	11.82%	48	43.64%	49	44.55%		0.00%	110	100.00%
Merry Oaks International Academy	586	93.76%	38	6.08%	1	0.16%		0.00%	625	100.00%
Metro School	102	44.93%	95	41.85%	29	12.78%	1	0.44%	227	100.00%
Military and Global Leadership Academy	97	58.43%	64	38.55%	4	2.41%	1	0.60%	166	100.00%
Mint Hill Middle	166	13.81%	755	62.81%	277	23.04%	4	0.33%	1,202	100.00%
Montclair Elementary	402	90.95%	38	8.60%	2	0.45%		0.00%	442	100.00%
Morehead STEM Academy	349	33.30%	617	58.87%	82	7.82%		0.00%	1,048	100.00%
Mountain Island Lake Academy	27	3.12%	539	62.31%	298	34.45%	1	0.12%	865	100.00%
Myers Park High	610	19.07%	405	12.66%	2,178	68.11%	5	0.16%	3,198	100.00%
Myers Park Traditional	278	41.19%	207	30.67%	190	28.15%		0.00%	675	100.00%

2017-18 SES by

Row Labels	Low SES		Medium SES		High SES		No Data		Total Students	Total %
	Students	%	Students	%	Students	%	Students	%		
Nathaniel Alexander Elementary	513	65.35%	272	34.65%		0.00%		0.00%	785	100.00%
Nations Ford Elementary	787	98.50%	8	1.00%	2	0.25%	2	0.25%	799	100.00%
Newell Elementary	307	38.71%	475	59.90%	6	0.76%	5	0.63%	793	100.00%
North Mecklenburg High	981	39.83%	1017	41.29%	461	18.72%	4	0.16%	2,463	100.00%
Northeast Middle	194	30.79%	374	59.37%	61	9.68%	1	0.16%	630	100.00%
Northridge Middle	128	17.83%	586	81.62%	4	0.56%		0.00%	718	100.00%
Northwest School of the Arts	334	30.93%	497	46.02%	247	22.87%	2	0.19%	1,080	100.00%
Oakdale Elementary	280	47.14%	310	52.19%	4	0.67%		0.00%	594	100.00%
Oakhurst STEAM Academy	385	59.78%	229	35.56%	30	4.66%		0.00%	644	100.00%
Oaklawn Language Academy	274	48.67%	248	44.05%	41	7.28%		0.00%	563	100.00%
Olde Providence Elementary	6	0.83%	44	6.11%	669	92.92%	1	0.14%	720	100.00%
Olympic High - Biotech Health Pub Admin	20	3.15%	521	82.05%	93	14.65%	1	0.16%	635	100.00%
Olympic High - Renaissance School	27	4.32%	511	81.76%	86	13.76%	1	0.16%	625	100.00%
Olympic High-Leadership and Development	19	5.12%	312	84.10%	40	10.78%		0.00%	371	100.00%
Olympic High-Math Eng Tech Science	8	1.31%	478	77.98%	125	20.39%	2	0.33%	613	100.00%
Olympic TEAM High School	27	6.55%	329	79.85%	56	13.59%		0.00%	412	100.00%
Palisades Park Elementary	1	0.13%	459	61.12%	287	38.22%	4	0.53%	751	100.00%
Park Road Montessori	61	13.74%	130	29.28%	251	56.53%	2	0.45%	444	100.00%
Parkside Elementary	1	0.27%	200	54.50%	166	45.23%		0.00%	367	100.00%
Paw Creek Elementary	87	12.79%	586	86.18%	7	1.03%		0.00%	680	100.00%
Performance Learning Center	112	67.88%	44	26.67%	9	5.45%		0.00%	165	100.00%
Phillip O Berry Academy of Technology	807	48.47%	747	44.86%	107	6.43%	4	0.24%	1,665	100.00%
Piedmont IB Middle	291	27.50%	479	45.27%	286	27.03%	2	0.19%	1,058	100.00%
Pineville Elementary	271	35.01%	460	59.43%	41	5.30%	2	0.26%	774	100.00%
Pinewood Elementary	401	79.09%	82	16.17%	24	4.73%		0.00%	507	100.00%
Piney Grove Elementary	244	30.81%	544	68.69%		0.00%	4	0.51%	792	100.00%
Polo Ridge Elementary		0.00%	3	0.30%	989	98.51%	12	1.20%	1,004	100.00%
Providence High	9	0.43%	540	25.57%	1,557	73.72%	6	0.28%	2,112	100.00%
Providence Spring Elementary		0.00%	1	0.11%	943	99.16%	7	0.74%	951	100.00%
Quail Hollow Middle	477	48.97%	418	42.92%	79	8.11%		0.00%	974	100.00%
Rama Road Elementary	411	70.74%	22	3.79%	148	25.47%		0.00%	581	100.00%
Randolph Middle	400	35.37%	334	29.53%	396	35.01%	1	0.09%	1,131	100.00%
Ranson Middle	510	57.05%	376	42.06%	5	0.56%	3	0.34%	894	100.00%
Reedy Creek Elementary	15	1.94%	751	97.15%	5	0.65%	2	0.26%	773	100.00%

2017-18 SES by

Row Labels	Low SES		Medium SES		High SES		No Data		Total Students	Total %
	Students	%	Students	%	Students	%	Students	%		
Reid Park Academy	684	97.99%	10	1.43%	2	0.29%	2	0.29%	698	100.00%
Renaissance West STEAM Academy	399	98.76%	5	1.24%		0.00%		0.00%	404	100.00%
Ridge Road Middle	21	1.68%	897	71.76%	332	26.56%		0.00%	1,250	100.00%
River Gate Elementary	5	0.65%	575	75.07%	185	24.15%	1	0.13%	766	100.00%
River Oaks Academy	6	1.02%	547	92.87%	32	5.43%	4	0.68%	589	100.00%
Rocky River High	472	30.71%	993	64.61%	68	4.42%	4	0.26%	1,537	100.00%
Sedgefield Elementary	266	78.24%	40	11.76%	34	10.00%		0.00%	340	100.00%
Sedgefield Middle	527	89.78%	45	7.67%	15	2.56%		0.00%	587	100.00%
Selwyn Elementary	68	8.29%	135	16.46%	614	74.88%	3	0.37%	820	100.00%
Shamrock Gardens Elementary	351	71.78%	50	10.22%	87	17.79%	1	0.20%	489	100.00%
Sharon Elementary	6	0.70%	160	18.67%	690	80.51%	1	0.12%	857	100.00%
Smithfield Elementary	186	28.75%	307	47.45%	153	23.65%	1	0.15%	647	100.00%
South Charlotte Middle	7	0.74%	376	39.70%	559	59.03%	5	0.53%	947	100.00%
South Mecklenburg High	1,105	35.15%	1147	36.48%	892	28.37%		0.00%	3,144	100.00%
Southwest Middle School	341	24.20%	880	62.46%	187	13.27%	1	0.07%	1,409	100.00%
Starmount Acad of Excellence	431	96.85%	13	2.92%		0.00%	1	0.22%	445	100.00%
Statesville Road Elementary	532	92.68%	41	7.14%	1	0.17%		0.00%	574	100.00%
Steele Creek Elementary	103	13.86%	638	85.87%	1	0.13%	1	0.13%	743	100.00%
Sterling Elementary	504	80.13%	124	19.71%	1	0.16%		0.00%	629	100.00%
Stoney Creek Elementary	178	23.77%	567	75.70%		0.00%	4	0.53%	749	100.00%
Thomasboro Academy	647	97.15%	15	2.25%		0.00%	4	0.60%	666	100.00%
Torrence Creek Elementary	11	1.83%	172	28.62%	417	69.38%	1	0.17%	601	100.00%
Trillium Springs Montessori	9	6.47%	81	58.27%	49	35.25%		0.00%	139	100.00%
Tuckaseegee Elementary	420	59.24%	286	40.34%		0.00%	3	0.42%	709	100.00%
Turning Point Academy	137	64.62%	58	27.36%	17	8.02%		0.00%	212	100.00%
University Meadows Elementary	159	24.69%	433	67.24%	52	8.07%		0.00%	644	100.00%
University Park Creative Arts	283	63.03%	154	34.30%	12	2.67%		0.00%	449	100.00%
Vance High	860	50.32%	810	47.40%	37	2.17%	2	0.12%	1,709	100.00%
Vaughan Academy of Technology	142	36.79%	215	55.70%	25	6.48%	4	1.04%	386	100.00%
Waddell Language Academy	299	21.65%	555	40.19%	526	38.09%	1	0.07%	1,381	100.00%
Walter G Byers School	375	96.40%	9	2.31%	1	0.26%	4	1.03%	389	100.00%
West Charlotte High	1,363	93.94%	80	5.51%	6	0.41%	2	0.14%	1,451	100.00%
West Mecklenburg High	564	36.06%	986	63.04%	11	0.70%	3	0.19%	1,564	100.00%
Westerly Hills Academy	498	98.42%	4	0.79%	4	0.79%		0.00%	506	100.00%

2017-18 SES by

Row Labels	Low SES		Medium SES		High SES		No Data		Total Students	Total %
	Students	%	Students	%	Students	%	Students	%		
Whitewater Academy	275	37.31%	461	62.55%		0.00%	1	0.14%	737	100.00%
Whitewater Middle	455	59.95%	299	39.39%	2	0.26%	3	0.40%	759	100.00%
William Amos Hough High	163	6.05%	603	22.37%	1,929	71.58%		0.00%	2,695	100.00%
Winding Springs Elementary	626	72.37%	234	27.05%	3	0.35%	2	0.23%	865	100.00%
Windsor Park Elementary	694	98.86%	7	1.00%	1	0.14%		0.00%	702	100.00%
Winget Park Elementary	65	9.83%	513	77.61%	82	12.41%	1	0.15%	661	100.00%
Winterfield Elementary	609	97.75%	14	2.25%		0.00%		0.00%	623	100.00%
<b>Grand Total</b>	<b>52,400</b>	<b>35.35%</b>	<b>52,249</b>	<b>35.25%</b>	<b>43,210</b>	<b>29.15%</b>	<b>383</b>	<b>0.26%</b>	<b>148,242</b>	<b>100.00%</b>