

PUBLIC NOTICE OF ADA REQUIREMENTS

Tipton R–VI School District does not discriminate on the basis of disability in admission to, or operations of its programs, services or activities. Tipton R-VI School District does not discriminate on the basis of disability in its hiring practices.

Dear Parents and Students:

It is with great enthusiasm and excitement that our staff and administration approach the beginning of a new year. We hope you will find the year rewarding and enjoyable.

A key ingredient in any effective school is high expectations on the part of all involved — professional staff, students, and parents. The Tipton Junior & Senior High School staff has prepared “The Official Student Handbook and Calendar” to convey our expectations. This handbook is also a tool to help the students become more organized with the calendar and student planner. We will help your student use this effectively.

Remember parents the four largest issues in school are still attendance, tardies, cell phones and lunch cards. If you can encourage your children to improve in these areas then I am sure this year will be better than the last.

Lastly, it has been our experience that students who are involved like school more, have higher achievement in school, and are generally more successful. We offer numerous areas where your child can become involved in extracurricular or co-curricular clubs, teams or organizations. Please encourage them to become involved in one or more of these opportunities.

Please, let's all work together to continue our strong traditions at Tipton Junior and Senior High School.

Please feel free to contact us at 660-433-5528 or visit our website at www.tipton.k12.mo.us.

Sincerely,
Ellen Allee
Junior High & High School Principal

Table of Contents

Teacher Schedule		4-5
Tardy Cards		6-7
District Statements		8
School Schedules		9
School Map		10
General Information		
	Office	11
	Visitors	11
	Fundraising	11
	Textbooks	12
	Library	12
Policies & Procedures		
	Dress Code	13
	Parking	14
	Passes	14
	Cafeteria	14-15
	Electronic Devices	15
	Lockers	15-16
	Bullying	16
	Attendance Policy	16-18
	Make Up Work	17
	College Days	18
	Leaving School	18
	Hold Harmless	18
Academics		
	Graduation Requirements	19
	Grading System	19
	Rankings	19-20
	Weighted	20
	Renaissance	21
	Graduation	21
	Awards	22-23
	A+ Program	23
Activities		
	Rules	24-26
	Activities List	26-27
	School Events and Dances	27-28
Discipline Policies		
	Appeals Process	29
	Consequences	31
	Discipline Code	31-36
	Computer Use Policies	36-38
ADA Requirements		38
Public Notice and Distribution of Materials		39-43

	1	2	3	4	SB	5
RED DAY	8:02-9:11	9:15-10:24	10:29-11:37	11:41-1:16	Stdy. Blk. 1:20-1:54	1:58-3:07
Bailey	PLAN	Fundamentals of Marketing	Adv. Marketing	7 th Careers	Study Block	8 th Keyboarding
Basinger	8 th Math	8 th Math	PLAN	8 th Math A	Study Block	7 th Math A
Bowers	Art 1	Art 2	PLAN	Art 1	Study Block	Art 3 & 4
Braby	Weights	Weights	PLAN	PE	Study Block	JH PE
Combs	7 th Science	AD	7 th Science	AD	AD	AD
Culpepper	7 th SS	JH PE	7 th SS	PLAN	Study Block	JH Current Events
Dwiggins Schultz	Study Skills	SPED Learn Skills	JH Study Skills	8 th English (CT)	Study Block	PLAN
Fischer	Computer Apps.	Business Tech 1, 2, 3	PLAN	Business Tech 1, 2, 3	Study Block	Keyboarding
Gentges	Career Math	Algebra 2	Inter/College Algebra	PLAN	Study Block	Algebra 1
Gertz	PLAN	Spanish 1	Accounting 1	Accounting 1 & 2	Study Block	Spanish 1
Hill	English 3	SFCC Comp1/2	English 1	English 3	Study Block	PLAN
Hughes	SPED English	HS Study Skills	HS Study Skills	HS Study Skills	Study Block	PLAN
Martin	World History	PLAN	World History	Psy/Soc	Study Block	Current Events/Geog
McNeal	SFCC History/SFCC Govt	Govt/Econ	PLAN	American History	Study Block	Econ/Govt
Meador	8 th English	Journalism	PLAN	8 th English	Study Block	7 th Reading
Melton	AG Construction	AG Structures	Ag. Science 1	Ag. Science 1	Study Block	PLAN
Mertens	Mixed Chorus	JH Choir	Elem	Elem	Elem	Elem
Morris	Green House	PLAN	Crop Sci/Animal Sci	Ag Leader/Comm	Study Block	Ag. Science 2
Nicholas	PLAN	English 4	8 th Reading	English 2	Study Block	English 2
Nichols	HS Band	JH Study Skills	Fundamentals of Music	PLAN	Study Block	Elem Band
Smith	JH Art	JH Art	Elem	Elem	Elem	Elem
Strother	PLAN	Physical Science	Chemistry	Lunch Duty	Study Block	Chemistry 2
Watson	PE	PLAN	JH PE	7 th Health	Study Block	10 th Health
Wellman	Micro Biology	Biology	PLAN	Micro Biology	Study Block	Intro College Biology
Witte	Family Development	Car & Fam Leadership	Foods	AD	Study Block	Personal Finance
Wolken	Geometry	Algebra 1	PLAN	Geometry	Study Block	Algebra A

	6	7	8	9	SB	10
WHITE DAY	8:02-9:11	9:15-10:24	10:29-11:37	11:41-1:16	Stdy. Blk. 1:20-1:54	1:58-3:07
Bailey	PLAN	Keyboarding	Fundamentals of Marketing	Entrepreneur	Study Block	Advanced Marketing
Basinger	7 th Math	PLAN	7 th Math B	7 th Computers	Study Block	8 th Math B
Bowers	PLAN	Art 1	Art 2	Art 3 & 4	Study Block	Art 2
Braby	Weights	Weights	PLAN	Weights	Study Block	JH PE
Combs	8 th Science	AD	8 th Science	AD	AD	AD
Culpepper	8 th History	PLAN	8 th History	JH PE	Study Block	JH Current Events
Daigdig Schultz	PLAN	JH Study Skills	7 th English (CT)	JH Learn Skills	Study Block	JH Study Skills
Fischer	Keyboarding	PLAN	Computer Applications	Business Tech 1, 2, 3	Study Block	Computer Applications
Gentges	PLAN	Career Math	Int/College Algebra	Algebra 2	Study Block	Statistics
Gertz	Spanish 2	8 th Spanish Expo	PLAN	Spanish 2 & 3	Study Block	Spanish 1
Hill	SFCC Speech/ American Lit	English 3	English 1	PLAN	Study Block	English 1
Hughes	HS Study Skills	HS Study Skills	HS Study Skills	HS Study Skills	Study Block	PLAN
Martin	World History	PLAN	Psy/Soc	World History	Study Block	Geog/Current Events
McNeal	Govt/Civil War	American History	American History	PLAN	Study Block	American History
Meador	7 th English	PLAN	7 th English	Journalism	Study Block	7 th Reading
Melton	AG Construction	Conservation	AG Man/SAE	Ag. Science 1	Study Block	PLAN
Mertens	Mixed Chorus	Chamber Choir	Elem	Elem	Elem	Elem
Morris	Ag. Science 2	8 th Ag. Expo.	SAE/AG Sales	PLAN	Study Block	Ag. Science 2
Nicholas	English 4	JH Study Skills	PLAN	8 th Reading	Study Block	English 2
Nichols	Fundamentals of Music	JH Band	PLAN	7 th Music Expo	Study Block	Elem Band
Smith	PLAN	JH Crafts	Elem	Elem	Elem	Elem
Strother	Physical Science	PLAN	Chemistry	Physical Science	Study Block	JH Study Skills
Watson	Weights (CT)	10 th Health	PE	PLAN	Study Block	JH PE (CT)
Wellman	PLAN	Human Anatomy	Microbiology	Biology	Study Block	Intro College Biology
Witte	PLAN	Personal Finance	Nutrition	AD	Study Block	Child Development
Wolken	Geometry	Algebra 1	PLAN	Algebra B	Study Block	Algebra I

Tardy Card (NOT MORNING TARDIES)

Teachers will initial and date when a tardy occurs. When the area is shaded they need to go immediately to the office for a consequence (example 7th tardy).

A student who does not produce the planner or tardy card will receive 1 hour of detention in addition to the normal consequences.

1st Semester NAME: _____

Tardy	Consequence	Teacher Signature	Date	Hour	Administrator	Student Initials
1	Tardy					
2	Tardy					
3	Tardy					
4	Tardy					
5	Tardy					
6	Tardy					
7	1 Hour					
8	1 Hour					
9	2 Hours					
10	2 Hours					
11	2 Hours					
12	3 Hours					
13	3 Hours					
14	3 Hours					
15+	Principal's Discretion					

Tardy Card (NOT MORNING TARDIES)

Teachers will initial and date when a tardy occurs. When the area is shaded they need to go immediately to the office for a consequence (example 7th tardy).

A student who does not produce the planner or tardy card will receive 1 hour of detention in addition to the normal consequences.

2nd Semester NAME: _____

Tardy	Consequence	Teacher Signature	Date	Hour	Administrator	Student Initials
1	Tardy					
2	Tardy					
3	Tardy					
4	Tardy					
5	Tardy					
6	Tardy					
7	1 Hour					
8	1 Hour					
9	2 Hours					
10	2 Hours					
11	2 Hours					
12	3 Hours					
13	3 Hours					
14	3 Hours					
15+	Principal's Discretion					

District Mission Statement

The mission of the Tipton R-VI Schools is to provide a safe and orderly environment, which enhances opportunities to acquire the knowledge, technology, and skills to secure a community of responsible life-long learners committed to making a contribution to society.

District Vision Statement

It is the vision of the Tipton School District to improve student learning through the use of technology. This learning can be improved with technology-enhanced instruction from our teachers. As our district blends technology into its curriculum, we at Tipton R-VI envision higher MAP scores, better attendance, and graduates that are better equipped to be successful in our modern society by being computer literate as they enter the workforce or go on to higher education.

Technology Mission Statement

It shall be the mission of the Tipton R-VI School District to provide the modern technology necessary to enhance the educational environment for students and staff in order to foster intellectual, physical, social, and career development of the children of the district.

School Schedule

Note: 4 minute passing time

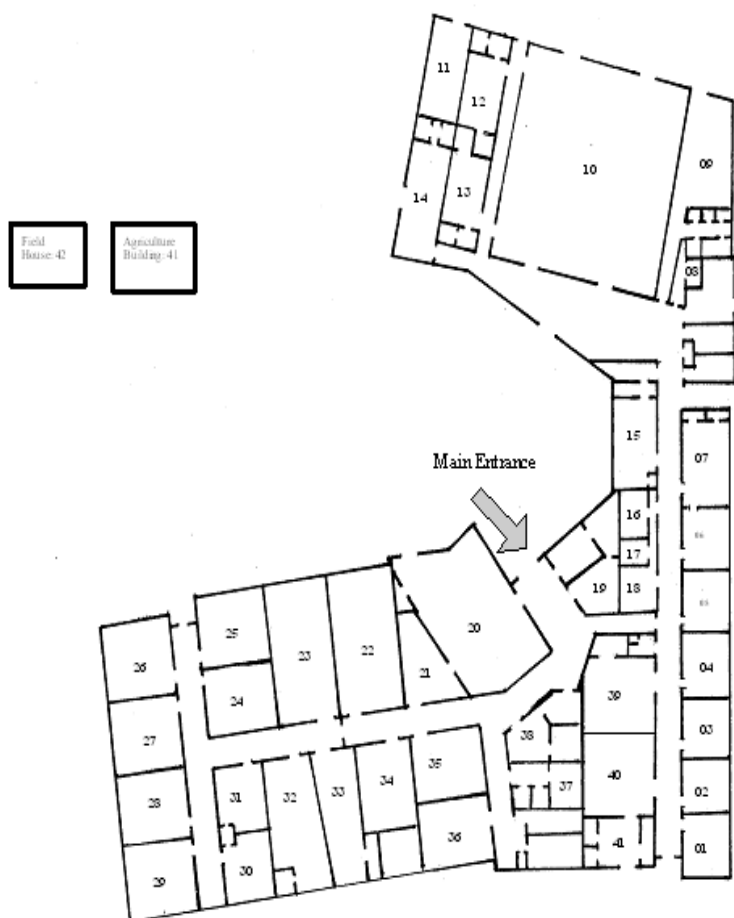
1st or 6th period	Red or White	8:02 - 9:11
2nd or 7th period	Red or White	9:15 - 10:24
3rd or 8th period	Red or White	10:28 - 11:37
4th or 9th period	Red or White	11:41 - 1:16
Lunch	1 st shift (Jr. High)	11:37 - 12:01
	2 nd shift	12:01 - 12:25
	3 rd shift	12:52 - 1:16
Study Block / TEAM	Both Days	1:20 - 1:54
5th or 10th period	Red or White	1:58 - 3:07

Short Day - School Schedule

Note: 4 minute passing time

1st or 6th period	Red or White	8:02 – 8 :57
2nd or 7th period	Red or White	9:01 – 9 :56
3rd or 8th period	Red or White	10:00 – 10:55
4th or 9th period	Red or White	10:59 – 11:54
5th or 10th period	Red or White	11:58 – 1:05
Lunch	1 st shift (Jr. High)	11:54 – 12:16
	2 nd shift	12:16 – 12:38
	3 rd shift	12:38 – 1:00

Tipton Junior and Senior High School



GENERAL INFORMATION

School Hours

The school doors will be unlocked at 7:30 AM and will be locked again at 3:30 PM. Students will only be allowed in the building outside these times if they are under the direct supervision of a school employee. The first bell for school rings at 7:58 AM and the last bell rings at 3:07 PM.

Office

The office exists for the sole purpose of caring for business at the school and school district. The office is similar to other offices found in the business community. When visiting the office one should be respectful, courteous, and business like. Everyone should wait their turn, quietly. You must remain in the hallway and wait to be invited into the office area.

Telephone, Messages and Flowers

The school telephones are for business use only. If you have an emergency you must receive office permission to call from the office phone. Messages for students cause a disruption to the classroom. Only those messages that are considered an emergency will be delivered during class; other messages will be put in lockers between classes. Flowers or any other items for students that are delivered to the school will be given out to the students after school.

Visitors

The school policy is to accept only those visitors who have legitimate business to attend to at the school. All guests and visitors must register at the office. Visitors who continually hang around school property will be asked to leave and a complaint of trespassing may result. **Attention Parents:** Unlike elementary school, parties for students are prohibited. Parents that have to visit students will do so in the privacy of the office area. Please work with us not to separate students in our school by sending presents, treats or items that do not include everyone.

Fundraising

Selling of any items including club or organization fundraising is prohibited during school hours. We ask that students limit their selling time to before and after school for school sponsored fundraisers and completely off campus for all others. Class rings, yearbooks, and senior photo deposits will be taken during lunch or designated times on a restricted time limited for taking such deposits.

Student Schedules

Students may withdraw from class without penalty during the first four days of the first and second semester. Students withdrawing from a course after the time limit will have a notation of "WF" (withdraw failing) next to the class grade on his or her transcript. The administration may request a student to be withdrawn anytime during the semester. This would be due to the student's inability to function properly in the classroom. Notations on student transcripts will be handled on an individual basis.

Red and White Days

Under the ten block system, each student is required to take 10 classes. This may sound stressful, but remember you will only be taking 5 classes a day. Every day of school this year is labeled as a red or white day. You will schedule ten classes this year, you will go to your first five classes on red days and your sixth through tenth classes on white days

Guidance and Counseling

The personal development and fulfillment of potential of all students is the counselor's main focus. Guidance services focus on student educational and occupational planning, decision making, and goal setting. Career exploration, understanding one's self and others educational and vocational development are all part of these services. There is information about colleges, trade schools, scholarships, financial aid, and personal problems located in the office. The counselor is available for the immediate concerns of the students as well.

Textbooks

All textbooks are provided by the school and are property of the school. Each student is responsible for the books issued to him or her. Any lost or damaged books must be paid for by the student. All books must be returned to the issuing teacher at the end of the scheduled class closing, for the assessment of the book. All "dual credit" courses will have a \$25 book fee and any additional supplemental supplies for the course will be paid by student.

School Library

The school library is open from 7:30 a.m. to 3:30 p.m. on school days. Students may use the library before and after school, during lunch periods (with a pass from lunch monitor) and during class time (with a pass from teacher). In addition to the book and audio visual collections, the library has daily newspapers, current magazines, and also available are various CD– ROM reference discs.

The library is fully automated with both the card catalog and circulation on computers. Books, back issues of magazines, and vertical files materials are checked out for three weeks, the due date on Wednesdays. A grace period allows fine-free return of these materials through Friday of that week. Fines or overdue materials will be \$.05 per day. Reference books and current magazines are checked out for one class period or overnight (checked out after school and returned before school the next day). If not returned on time, fines on these materials will be \$.05 per class period or \$.25 per day. Students may check out 3 items at one time. This limit can be waived for students working on multiple assignments, but permission is needed from the Librarian or Library Aide. Some of the more expensive reference books are designed for in-library use only.

Students are responsible to return all library materials on time and in good condition. For lost or severely damaged items students must pay replacement costs. Lost magazines are charged at the cover price plus one dollar. Since bar codes are essential to automated circulation systems, a dollar charge will be assessed for items returned with a missing or damaged bar code.

POLICIES & PROCEDURES

Dress Code

It is the belief of many that an individual's personal conduct is in direct proportion to the individual's personal appearance. It is also believed that those individuals who are well groomed and neat in appearance attain a higher level of achievement whether in the classroom or in a job situation. It is with this in mind that the Board of Education of Tipton R-VI has adopted the following guidelines:

1. If a student's dress or appearance is deemed by the staff to be in poor taste or is a distraction from the educational environment the student will be asked to remedy the situation.
2. All edges of clothing will be hemmed without excessive fraying.
3. Shirts/tops will completely cover the breasts (no visible crease), torso and extend past the waistline of the pants or shorts being worn (no visible crease). No shirts with ripped or cut off arms. No spaghetti straps and no razorbacks.
4. Pants, sweats, shorts, or jeans with holes that create an inappropriate appearance or that are distracting are prohibited. All pants and other baggy clothing will not extend below the waist or hips.
5. Shorts, skirts, and dresses should be worn under the following guidelines:
 - a.) Cut off jeans or sweats must be neat in appearance and uniform in length. (No fringe)
 - b.) There will be no short shorts.
 - c.) No tight shorts, skirts, or tight sweats such as spandex or leggings are permitted. If a student wears leggings their top must be fingertip in length.
 - d.) Skirts and dresses must be below the mid thigh and may not have tears or holes. Men's boxer shorts (any shorts with a fly not zippered are considered in poor taste and are not acceptable).
6. Caps, hats, visors, sunglasses and headbands (bandanas) are not to be worn in the building. Students need to leave those items in their locker (headbands and handkerchief bandanas will not be allowed to extend from the clothing in any manner).
7. Items of clothing that advocate or advertise controlled substances such as drugs or alcohol are prohibited. Clothing that exhibits vulgar or crude language relating to sex or any other subject (innuendo) is not permitted.
8. Any body piercing, tattoos, jewelry, or other apparel a teacher deems to be a distraction will not be exposed or worn within school.
9. Gang or group affiliation. Students wearing symbols that separate themselves into groups will not be allowed to display these items at school or school grounds. Ink writing on arms, clothing, and writing on clothes will not be allowed when deemed to separate groups outside the normal social settings of the school.

School Parking

Students will be permitted to drive to school and utilize the school parking lot. This area is behind the football field within the boundaries of the property. Spaces will be provided on a first come basis. Students wanting to drive to school will be required to enter and leave in a safe manner. Cars need to be locked and secured with all items needed for the day brought to the building. Individual vehicles on school property may be searched if the administration has a reasonable suspicion that they contain items not allowed on school property. All vehicles may be searched as a part of a coordinated effort with law enforcement. If the student resists a reasonable search then law enforcement officials will be contacted.

Nurse Procedures

The best time to see the nurse is before and after school, lunch and between classes. If you are late to class because you were at the nurse's office you will receive a tardy. If you have to take medicine at certain times you need to make prior arrangements with the nurse, teacher and the office. The nurse will hold all prescription drugs for all students. Possession of these items by students may fall under the Drug Possession section of the discipline code. Missing class time in the nurse's office is an excused absence, but this absence will count towards total missed classes and will count against your held-harmless status. If you miss more than fifteen minutes of a class then you will be considered absent for that class period. If you need to go home because you are sick you must see the nurse first.

Hall Passes

Any student leaving an assigned area or class must have a signed hall pass from the teacher. These passes are contained in this handbook. During all class times passes are required to be in the hall or a tardy or truancy will result.

School Cafeteria

We have a closed lunch shift at Tipton R-VI. Students are not allowed to leave to eat their lunch. In the event a student leaves it will count as an absence for that hour (See Attendance Policy). Students may not have food delivered to the school during their lunch period. This is a disruption to the office and can become a distraction for other students during the lunch shifts.

Three shifts of lunch will be taken starting at 11:37 and ending at 1:16. Each shift will have approximately 24 minutes to eat. Students need to report directly to the cafeteria as soon as the tardy bell rings. Students are not allowed in any other areas of the building without prior permission and a pass from the lunchroom supervisor. Lunch is paid for through the SIS system. Because of this system the following rules must be observed.

1. Everyone must have an SIS scan card.
2. Original cards will be issued free; a replacement card will cost \$3.00. All free and reduced lunches will also receive the same card.
3. **If a student does not have their lunch card they will have to wait and eat**

peanut butter and jelly or the student may purchase a new lunch card.

4. In the junior and senior high school, lunch money will be collected in the following manner.
 - a. Students will place money in their account by putting it in an envelope with the amount and name and then placing it in the collection box in the kitchen.
 - b. Checks that do not clear the bank will be deducted from the lunch account.
 - c. At times we know the student will allow his or her account to become delinquent, however when an account exceeds \$5.00 no meals will be allowed. (Student may eat PB&J free of charge)
 - d. The money left in the account at the end of school will be forwarded to the next year unless the student is not returning. In this case a check will be issued to the parents for the remaining amount.

Open Containers & Snacks

Snacks and soda machines are here for your convenience, we ask that these items be consumed in the cafeteria area or be thrown out. Soda and snacks left in lockers are a health hazard and a mess for our maintenance staff. Therefore, no open containers will be allowed in the halls at any time. Snacks and soda are a courtesy to the students and if the policy is abused, the machines will be turned off. Any food or beverages brought to the school will be in a lunch container and consumed in the cafeteria before school or at lunch.

Cell Phones & Electronic Devices

Cell Phones, pagers, laser lights and other electronic devices that are a distraction from class climate are not to be worn or used during school times. School time is when the student enters the building in the morning until the final bell rings and they have left the building or 3:11pm. Students that bring such devices will be asked to take these items to the office immediately and not bring them back to school. NOTE: This policy extends to all areas of school jurisdiction, including overnight trips. On long activity nights the sponsor may grant the use of some of these items. If a student is caught with any electronic devices (including cell phones) they will be confiscated and will not be returned to the student until after disciplinary issue is resolved. (Nuisance Items)

Lockers

Hall lockers are provided by the school for use by the students for coats, books, etc. Students are asked not to keep valuables in these lockers. If an item of value is brought to school it should be brought to the office for safe keeping. Lockers will be searched on a regular basis by the administration as a part of a general sweep of groups of lockers or an individual locker search.

Rules:

1. Keep the locker that was assigned to you at registration.
2. Lockers may be taken away from students that abuse them.
3. Lockers will be inspected periodically for cleanliness and organization.
4. If you wish to bring your own lock, it should have a rubber coating as to

not harm locker paint and leave the combination or an extra key at the office.

5. Students are responsible for the contents of the locker they are assigned.
6. The outside of the locker may not be decorated in any manner. This policy is to protect the finish on the locker and avoid causing further discipline issues because of the decoration.

BULLYING / HAZING / HARASSMENT

Bullying is an issue in all aspects of life. The Tipton R-VI School District is committed to the prevention of bullying and the educating of students on the prevention and identification of bullying for the rest of their lives. In the past few years we have identified this list of actions which have been proven to prevent or reduce bullying behaviors:

- ☐ Tell someone.
- ☐ Avoid secluded locations.
- ☐ Avoid known bullies.
- ☐ Stay in groups.
- ☐ Do not carry expensive items or money.

As you can see this list can be used by adults as well as students. The most important item in this list is the first one, "Tell Someone". In many cases bullying happens at times and places where teachers and administrators do not see or hear it. Students must have the courage to inform the school that they are being bullied or harassed.

ATTENDANCE POLICY

It is the policy of this school and the number one priority of all staff members to keep the students safe and in the classroom. This absentee policy is designed to complete this mission. Adherence to this policy is mandatory. Students are allowed to miss a maximum of five class periods of each class per semester. All absences excused or unexcused will count toward this except school sponsored trips. If a student goes over this amount then credit for that class will be withheld. Credit can be reinstated by following the credit recovery process. Students are responsible to follow each teacher's rules on completing make-up work.

Prearrangement (school activities, appointments, etc.)

This is the school's preferred method of dealing with an absence. Students must follow this procedure for any school activity absence. Follow each teacher's instructions on turning in missed/make-up work. To prearrange you must first obtain a prearrangement slip from the high school office or the school website. This form must be completely filled out and returned to the office or the activity sponsor by the time you leave.

Excused Absences (sick, family emergencies, etc.)

There are two methods by which an absence can be excused. Keep in mind the preferred method is for the student to prearrange. If the absence could not be foreseen the student's parents must call the school by 10:00 AM on or before the

day of the absence. The second method is for emergencies only. Your parents may pick you up at the office or call the office and allow you to sign out. The office will no longer accept written notes to excuse an absence. Make up work will be accepted by following the teacher's rules on make up work. The make up work may be different from the regular classroom work. If it is determined that the excuse was improper then the absence will become unexcused.

Unexcused Absences

If the above procedures are not followed the absence will be considered unexcused. The student will receive a zero for all class work during the unexcused absence. The student will also not be eligible to participate in any activity, practice or attend any school event. If it is determined by the principal that the unexcused absence was intentional, then it will be considered truancy and disciplinary action will be taken. All unexcused absences may be appealed by scheduling a meeting with the Principal. The student(s) and the parents must attend the meeting. A valid reason must be given to reverse a decision.

Credit Recovery Policy

The school recognizes extenuating circumstances do exist, that are beyond the control of the student. Because of this, the following procedures are available to students losing credit for excessive absences.

A student may make up their time missed over five periods in credit recovery. Once the student misses five periods they will be notified by the building principal that they should begin the credit recovery process (within five calendar days) by making up time in either AM or PM detention.

If a student fails to make up all of their time then credit for the class or classes will be withheld. All credit recovery need to be completed during the semester the hours were missed.

Students who have lost credit:

1. Must continue in class as a productive well behaved student.
2. If conduct is not appropriate, the student will be excluded from school for the remainder of the semester.
3. Students who have lost credit may not maintain part-time status.

Make-Up Work

Make up work for all absences are the responsibility of the student. Students who miss school should follow the classroom teacher's policies on make up work. Students are to make necessary arrangements to complete work missed upon returning to school. **REMEMBER:** Students who miss a red day and return on a white day need to seek assignments from red day teachers, because red day assignments will be due on the next red day. Students who have unexcused absences or as Out of School Suspensions will receive no credit for work on those days missed. When a parent calls their child in absent the must ask for homework to be collected and can pick up the assignments anytime after 2:30pm.

Homebound

Students who have issues that preclude them from being at school may apply for homebound status. This process begins by speaking to the school counselor and Principal. Homebound status is for limited periods of time to allow the student to keep up with their school work while at home. The student is expected to fulfill their obligations during the process.

College Days

Seniors are allowed two days during school to visit a college, vocational, or military evaluation. These days may be taken any time prior to the last day of April. To use a college day you must first contact the counselor for the correct forms and procedures.

Permission to Leave School

All requests to leave the building while school is in session, including the lunch period, must be cleared through the building principal's office. Leaving school without verbal permission from the student's parents will be classified as

TRUANCY. Always sign out at the office when leaving school early or showing up late.

Sign In/Sign Out

Students coming to school later than the prescribed tardy time or leaving must do so by signing a time sheet in the office. Phone calls from custodial parents or notes must be submitted at the time of signing in or out. Students who bring notes to leave early must have their note signed by the building principal and a pass written in their handbook to show the teacher they have permission to leave class. Students are not allowed to go to their vehicles without the building principals permission. Students not following the districts sign in/sign out policy will be considered truant.

Hold Harmless Finals

If a student has had 99% attendance that semester, the student will be held harmless during the final examinations. This means final exam grades can only help not hurt their current grade.

1. The students cannot miss more than 5 class periods and 1 study block of school that semester for any reason. (**school sponsored field trips are the only exception to this rule**)
2. The student is expected to make an honest effort on the final. This will be determined by the classroom teacher.
3. Any disruption caused by a hold harmless student during finals week will result in loss of held harmless status.
4. The student has been in attendance at THS the entire semester.

ACADEMICS

Graduation Requirements: 34 CREDITS

LANGUAGE ARTS: 4 UNITS

English I, II, III, and English IV or College Comp. I & II, College Speech

SOCIAL STUDIES: 3 UNITS

World History, American History, American Government, Plus 1 elective (Psy./Soc, College History/Government, Economics, Civil War, Geography, Current Events)

**Must pass the United States and Missouri Constitution Tests*

MATH: 3 UNITS

Algebra I, Geometry, Plus one elective (Career Math, Algebra 2, Intermediate Algebra, College Algebra, College Precalculus/Statistics)

SCIENCE: 3 UNITS

Physical Science, Plus 2 Science electives (Chemistry, Biology, Microbiology, Chemistry 2, College Human Anatomy, Intro to College Biology)

FINE ART: 2 UNITS

Art I, II, III, IV, Band, Choir, Chamber Choir, Mixed Chorus, Fundamentals of Music

PRACTICAL ARTS: 5 UNITS (Keyboarding and four units in one vocation)

Ag Science 1, Ag Science 2, Green House, Ag. Const., Ag. Man., Ag. Structures, Ag. Sales/Leadership, Animal Science, Crop Science, Conservation, Career and Family Leadership, Nutrition, Child Dev., Foods, Acct I, Advanced Accounting, Keyboarding, Computer Apps., Business Tech I, Business Tech II, SFCTC Vocational, Fundamentals of Marketing, Advanced Marketing, Entrepreneur Small Business Management, Marketing Work

PHYSICAL EDUCATION: 1 UNITS

Physical Education and/or Weights

HEALTH: 1/2 UNIT

Health

PERSONAL FINANCE: 1/2 UNIT

ELECTIVES: 12 UNITS

NON-CREDIT

Office Aides, Library Aides, and Study Block

Grading System

Grade cards will be issued every nine weeks: first quarter, first semester, third quarter and second semester. First and second semester grades will be an accumulation of both quarters. Grades and grade cards are withheld until all attendance and discipline issues are resolved and bills and fines are paid. Only semester grades are recorded on permanent records.

Student Ranking

Students will be ranked based on their accumulated grade points. These are calculated by adding up all the points (see below) the students have accumulated

in their classes. Students can get more points by taking more classes and getting better grades. A grade point average will also be calculated. This is figured by dividing their grade points by the number of classes they have taken. Semester grade points and grade point averages, as well as class ranks, will only be calculated at the end of each semester. Class rank will be determined by grade points.

Grade points awarded by other institutions will be calculated into Tipton High School's grade points on a case by case basis. Each student's situation will be considered based on the structure of the institution from which they are transferring.

POINT SYSTEM

A	=	4.00
A-	=	3.6667
B+	=	3.3333
B	=	3.00
B-	=	2.6667
C+	=	2.3333
C	=	2.00
C-	=	1.6667
D+	=	1.3333
D	=	1.00
D-	=	.3333
F	=	0.00

STANDARD CLASSROOM GRADE SCALE

A	=	96– 100%
A-	=	90– 95%
B+	=	87– 89%
B	=	83– 86%
B-	=	80– 82%
C+	=	77– 79%
C	=	76- 73%
C-	=	70– 72%
D+	=	67– 69%
D	=	63– 66%
D-	=	60– 62%
F	=	0– 59%

Weighted Classes

In order to reward those who excel in taking a more rigorous academic schedule while attending THS, some classes have been given a weighted scale. Any grade in the A through C– range will add .3333 to the normal grade points earned. This is a list of the weighted classes that have been offered at THS. Occasionally some of these courses are cancelled for lack of interest. SFCC American Lit., SFCC Comp I, SFCC Comp II, SFCC Speech, Intermediate Algebra, Algebra II, CMU Algebra, CMU Stats, UCM Pre-Calculus, Mo. Baptist Human Anatomy, Chemistry, Chemistry 2, Mo. Baptist Intro. To College Biology, Economics, Psychology, Sociology, Civil War, SFCC National Government, SFCC American History, Accounting II.

Honor Roll

The honor roll is used to encourage students to attain higher goals and higher scholastic standing. The honor roll is published at the end of each nine weeks. The criterion for the High Honor Roll is a grade point average of 3.50. The criterion for the Honor Roll is a grade point average of 3.00 or higher.

Renaissance

The Renaissance program is a parent run organization that rewards students based on their grades, attendance and good conduct in school. The requirements to be a card holder are as follows:

Gold Card	Silver Card
High Honor Roll	Honor Roll
No D's or F's	No D's or F's
No Discipline Referrals	No Discipline Referrals

The Renaissance Parents provide four pizza lunches for the students throughout the year. They also have perfect attendance rewards each quarter. At the beginning of each year if the students are on the honor roll all four quarters of the previous years then they will receive an Academic Letter or Bar. Freshman that maintain a 4.0 GPA will also receive a Letter Jacket from Renaissance.

Part-Time Status

Part time status of students attending school is allowed for 5th year seniors. Any other physical limitations or hardships that could require part time status need to be approved by the board of education or fall within the Department of Elementary and Secondary Education's guidelines. Part-time status may preclude many of the school activities and graduation honors.

Graduation

Graduation exercises provided by the school are an honor and privilege granted by the Board of Education. THS Students who do not attend the final semester of school at THS may be granted the privilege of participating in the graduation ceremony at the discretion of the Principal. The School District maintains that each student will be at least 1/2 credit from the prescribed state and local standards when entering into graduation exercises provided that the student has enrolled in the appropriate summer school or correspondence course. Graduation has always been very crowded so spectators need to show up early for the best seats. There will not be any reserved seating for guests at the ceremony.

Completion of Academic Work

At times students may fall behind in graduation requirements. THS allows students to take 1 credit hour of certified correspondence work. All correspondence work must be arranged through the counselor's office and approved by the high school principal. This work must be completed by the end of school to meet the graduation and graduation ceremony standards. Limits on correspondence course work may be waived upon the final semester with approval of the superintendent.

Awards

Missouri College Preparatory Studies Certificate

- Must have a 3.00 GPA
- 21 on the ACT
- G.P.A. 3.00 in combined subject areas of English, Social Studies, Math, and Science.
- The following classes must be taken:
 - 4 English/Language Arts
 - 3 Social Studies
 - 3 Math (Algebra 1 and above)
 - 2 Science (excluding Gen. and Physical Science)
 - 1 Fine Art
 - 1 Practical Art
 - 1 Physical Education
 - 3 from Core Electives including Foreign Language
 - 6 General Electives

Presidential Academic Award

Qualifications:

- G.P.A of 3.5 at the end of the 1st semester
- Score Advanced or in the 85th percentile on **math** or **reading** tests of the ACT, EOC, PLAN, or MAP.

THS Scholars Recognition

All students meeting these qualifications will be recognized.

- Student must maintain a 3.00 G.P.A.
- Take and successfully complete 8 weighted classes (See weighted classes.)
- SFCTC students in a two-year program(s) only need five weighted classes.

Top Ten Recognition

The Top Ten Students will be selected from the group of THS Scholars. These will be selected by the students with the highest grade points. Grade points will only accumulate over four years of high school. Top Ten Students must be in attendance at THS for the last two complete semesters.

Valedictorian and Salutatorian

The Valedictorian and Salutatorian will be the students in the top ten with the highest and second highest grade points respectively. The students must be in attendance at THS for the last four complete semesters to be eligible.

Scholarships

Searching for scholarships begins early in the senior year. Preparation for scholarships begins the first semester of the freshman year. Students need to plan early to make the highest grades and get involved in activities in school and in the community if they want to have the credentials which will win scholarships.

Scholarships are a competition. The responsibility for the search of scholarships rests primarily with the student. The guidance office provides information and other assistance on when and where scholarships are available. Our scholarship program has increased dramatically over the last several years. A list of scholarships and information is always available in the guidance office.

Remember: you can't earn one if you don't apply.

A+ Program

Missouri Outstanding Schools Act of 1993 established provisions for the implementation of a grant award program to institute A+ Schools and improve the education of high school students within the State of Missouri. Beginning in 1994, the A+ Schools Program has provided grant awards to Missouri's public school districts that demonstrate a commitment to ensure that the program's goals are met in their high schools. The goals of an A+ School are to ensure that:

1. All students will graduate from high school.
2. All students complete a selection of high school studies that is challenging and has identified learning expectation.
3. All students proceed from high school graduation to a college, post-secondary vocational technical school, or a high wage job with workplace skill development opportunities.

The student financial incentive of the A+ Schools Program provide for applicants who meet the A+ requirements to be eligible for the total cost of tuition, and general fees while attending any Missouri public community college or post secondary vocational or technical school as a full-time student.

Requirements:

- ✓ Sign an A+ Student Participation Agreement.
- ✓ Attend Tipton High School for three consecutive years prior to graduation.
- ✓ Maintain at least a 2.5 accumulative grade point average.
- ✓ Maintain at least a 95% accumulative attendance record.
- ✓ Perform 50 hours of unpaid tutoring during high school.
- ✓ Maintain a record of good citizenship and avoid the unlawful use of drugs.
- ✓ Make a good faith effort to first secure all available federal postsecondary student financial assistance.
- ✓ Score Advanced or Proficient on Alg. I EOC

These costs will be reimbursable only after secured federal financial assistance funds that do not require repayment have been applied. The incentive is good for six (6) semesters within four (4) years as long as the student maintains a 2.5 GPA and FASFA forms are completed each year.

ACTIVITIES

At Tipton R-VI our activities are viewed as an extension of the classroom and the learning environment. We want all our activities to be successful, but do not hold activities above the learning day. It is the responsibility of all students, parents, sponsors, and administrators to insure that our activities do not detract or supersede the normal learning in the classroom.

The Missouri State High School Activities Association (MSHSAA) is our governing institution for all activities. Participants in activities governed by MSHSAA are required to follow their rules as well as the rules of the Tipton R-VI School District.

Activity Rules and Regulations

Missouri State High School Activities Association (MSHSAA)

Semester Prior to Participation (High School Students Only): The student shall have earned, the preceding semester of attendance, 80% of the maximum allowable classes in which a student can be enrolled in the semester.

A 7th or 8th grade student must meet the following requirements in order to be academically eligible to participate in interscholastic activities:

Grading Period: A “grading period” is a period no less than six weeks and no greater than nine weeks where progress is determined and is reported to students/parents. A student must have been promoted to a higher grade at the close of the previous year. However, any such student who failed more than one scheduled subject, or failed to make standard progress in special education, shall be ineligible the following grading period. Entry into 7th or 9th Grade: This section shall not apply to students promoted for the first time into the 7th or into the 9th grade prior to the first day of classes.

The student must also be a creditable citizen and judged so by the proper authority. Those students whose character or conduct is such as to reflect discredit upon themselves or their schools are not considered “creditable citizens”. See the MSHSAA Official Manual for more details on eligibility.

Eligibility: Tipton R-VI School District

Academic for JH/HS

Any student receiving a failing grade at the end of the quarter will be deemed ineligible. Students enrolled in classes requiring participation (performance outside the school day) are also ineligible by this academic standard. These students may lose some points toward their grade because they are ineligible to participate in any co-curricular activity. The student may be declared eligible after first and third quarters if they raise their grades which must be verified by the Activities Director. If a student has not raised the grade to passing by mid-quarter (progress report) they will remain ineligible for the remainder of that quarter.

If at the end of first or second semester a student has not earned five credits, but has earned at least four credits, then that student will be ineligible until at least

mid-quarter grades are posted the next quarter. At that time if the student is not failing any classes then he or she will be deemed eligible. If a student has not earned at least four credits in the last semester then the MSHSAA 80% rule will apply.

Note: All eighth graders who advance to the ninth grade will be eligible at least until the first quarter grades are posted.

Citizenship

The Tipton R-VI School District will follow the MSHSAA Manual for citizenship (see above). In addition to the MSHSAA Standards students will also be held to the standards stated in the citizenship agreement that each student and parent must sign prior to participating in any activity. Failure to complete or abide by the standards in the Tipton R-VI Citizenship Agreement will result in ineligibility.

Attendance

Any student participating in an activity must have a good attendance record. He/She must be in attendance at least one half day to be eligible to practice or compete. If the activity is on a weekend or holiday the student will be in school the school day prior to the event. The absence must be excused or the student will not be eligible to participate until the student has been in attendance for a full day (MSHSAA). Any unusual circumstances for an absence must be cleared by the principal in advance. Students are also expected to be in attendance the day after an event. Failure to comply with these rules may result in missing the next contest

Medical

Each student participating in an athletic activity will have a current physical on file with the Athletic Director. Students that have medical issues during a season must first be released by their physician in writing before being allowed to participate in their event.

Scholarships

Students who anticipate participation or scholarships in college must be aware that the NCAA Clearinghouse must review classes and grades in advance. See your coach or counselor for the applications and forms. Student athletes must also be aware of all the rules regarding eligibility in the NCAA. Information and application may be obtained on-line.

Student Transportation

Students who take trips sponsored by the school will be provided transportation. Students are required to use the transportation provided both to and from their destination. Depending on the circumstances of each event, custodial parents may be allowed to transport their child to or from an event. Parents will have to inform the appropriate school personnel and follow the correct procedures. This exception is allowed not out of convenience, but necessity, to the parents and students. This exception may be withdrawn at anytime if it is determined that this exception is being over used.

More Than One Activity

At Tipton R-VI we encourage students to participate in as many activities as they can handle. Being involved in more than one activity at the same time can cause some issues with practicing and playing. The following are some basic guidelines for dealing with situations.

1. Contests take precedence over practices.
2. Conference affiliated contests take precedence over normal activities or contests.
3. District contests take precedence over regular season contests.
4. State and national contests take precedence over district contests.

We require students, coaches and parents to meet with the athletic director prior to the season to organize when the students will compete at each event when there are conflicts in the schedules.

Lettering

A sports letter is an honor given to team members who have demonstrated sportsmanship in and out of competition. This is an honor, not a right. As a letterman, the athlete should have shown team leadership for the entire season, and have completed the following criteria:

1. Compete in at least 50% of total varsity quarters played in football and basketball. Compete in 50% of varsity competition in volleyball, wrestling, track, golf, baseball, or softball (track & golf also have point requirements).
2. Be a member of the team at end of the season.
3. Have all equipment turned in and bills paid.
4. Attend the sports banquet at the end of the season.
5. Non-athletic activities will have their own standards.

*If a season ending injury occurs, lettering requirements may be changed at the coach's discretion.

Activities Director: Taylor Combs, Ashley Witte

Boys Basketball: Jacob Watkins, Chris Bracht

Football: Tony Braby, Ralph Martin, Taylor Combs, Nathan Bestgen, Chris Bracht, Jason Culpepper, Andy Bixler

Wrestling: Eric McNeal

Girls Volleyball: Andrea Hughes, Ashlee Pettigrew, Anna Diggs

Golf: Danny Dick

Track: Tony Braby, Brad Homan

Cross Country: Brad Homan

Girls Basketball: Jason Culpepper, Travis Smith

Softball: Eric McNeal, Andrea Hughes

Baseball: Jacob Watson

FCCLA: Ashley Witte

FFA: Gary Morris, Duane Melton

NHS: Heather Martin

DECA: Trisha Bailey

FBLA.: Genee Fischer

Varsity Band: Sherry Nichols
Choir: Sabra Mertens
Speech: Brian Hill
Cardinal Call: Leeanna Meador
Cheerleading: Genee Fischer, Roxanne Whitworth
A+ Coordinator: Heather Martin
Student Council: Heather Martin and Taylor Combs

Junior and Senior High School Student Council Activities

The Student Council makes up the governing body for Tipton Junior and Senior High School. Besides governing student affairs, Student Council is responsible for organizing many school activities. Homecoming and Court Warming details are decided by the High School Student Council. The Junior High Student Council will be responsible for the Junior High Dance and the Promotion Dance. Hiring a disc jockey, coronation ceremonies, and making sure everything runs smoothly are other examples of Student Council responsibilities.

National Honor Society

N.H.S. membership is an honor and responsibility bestowed upon a select group of students. The selection criteria will be based on a point system. Selection for NHS: (membership requires 50 pts)

Academics

3.333 Required for an application.
3.200 GPA core subject area 20 pts.
3.500 GPA in core areas 10 pts.

Class Selection

1 point per passed semester weighted classes

A+ Status

10 points possible based on status of completion

Sports

1 point per each completed season
1 point per each completed letterman season

School Activities (extra and co-curricular)

1 point per each completed year
1 point per each completed leadership role year

Teacher Survey

10 points possible

Point Deductions (all previous High School years)

Office referral (non behavior) is a 2 to 5 point deduction (each).
Discipline referral is a 5 to 10 point deduction (each).
Violation of citizen agreement = non acceptance

School Events and School Dances

School sponsored events are for the enrichment of the students and are an extension of the classroom. These events are designed to be of educational value and build school moral. In this light, all events home or away will fall under the jurisdiction of the school and therefore, all participants and spectators must follow all the rules and regulations of the Tipton R-VI School District.

Drug Free Events: Tipton High School will make every effort to secure a drug free environment for our students. Participants and spectators at school events may be required to submit to a breath test or other examination administered by school personnel to determine the presence or use of drugs or alcohol. Students who are determined to be under the influence of drugs will be subjected to the discipline policy (see ALCOHOL, DRUGS, AND NARCOTICS). Non-student spectators will be asked to leave. In both cases further attendance at events will be restricted and law enforcement officials will be notified.

Dances: Students are allowed to bring outside guests to the school dances. The following rules will apply:

1. Students wishing to bring a guest must fill out the appropriate paperwork for that guest in the office for approval no later than the day before the dance.
2. The Guest may not have reached their 21st birthday to attend our dances at the high school (Junior High Dance guests must be in 7th or 8th grade.)
3. Since this is a school sponsored function, students who have dropped out of school may not attend.
4. Guests will be checked through the other school to ensure they are not on suspension or disciplinary action.
5. The school dress code will apply at these events. Any student who is not sure if their outfit is appropriate should ask the building principal.
6. Anyone bringing a guest is responsible to bring and leave with the guest. Tipton R-VI students are responsible for their guest's behavior and may be subject to disciplinary consequences for their guest's actions.

DISCIPLINE POLICIES

The public schools of this nation have the responsibility, conferred on them by the state, to provide public education for students until they graduate or reach the age of 21. To discharge this function effectively and equitably, school authorities and parents must ensure an environment in each school which is conducive to the learning process.

Federal and the state laws confer rights and freedoms to every citizen both in and out of school. At the same time, every citizen has the responsibility to respect the identical rights of others. In the school environment, these rights and responsibilities must be harmonious with the learning process. Thus school authorities are allowed a broader range of powers in maintaining an orderly environment than is allowed by law enforcement authorities, provided they adhere to the requirements of due process and other constitutional standards. Rules that establish discipline guidelines for students are necessary and basic to their growth and development. It is the responsibility of Tipton R-VI School District to have standards and expectations for student behavior.

This disciplinary code will apply for students in grades 7 to 12 at all school sponsored activities; home or away, and on school grounds or buses at any time as well as during the school day.

Appeals Process

Students and/or parents have the right to appeal a policy or disciplinary decisions made by the Principal. The parent(s) and the student should make an appointment to meet with the Principal to discuss the reason(s) for reversing a decision. This meeting should take place in a timely manner in order to avoid further disciplinary actions for attempting to postpone the consequences of a disciplinary decision.

Substitute Teachers

Substitute teachers are hired each year to fill in when the normal classroom teacher cannot be there. On these few occasions the teacher will leave work for the students to do in their absence that a substitute teacher can manage. Although this change may be difficult for the students to handle, the school district expects that they will be on their best behavior. Disruptions of class by any student at these times will cause the punishment to be doubled.

Student Responsibilities

Each student has the responsibility to:

- Know and adhere to reasonable rules and regulations
- Study diligently and maintain the best possible level of academics
- Help maintain the school, environment, preserve school property, and use care when using school property
- Refrain from gross disobedience or other behavior not conducive to the school environment.

Student Rights

Each student has the right to:

- Have the opportunity for a free education in the best learning environment.
- Freedom of speech and of the press as long as the exercise of these rights is not disruptive.
- Be secure in his/her person, papers, and effects against unreasonable search and seizures; unless there is reasonable suspicion that the student is concealing materials prohibited by the law or this code.
- Expect that the school will be a safe place with no fear of bodily harm.
- Expect an appropriate environment conducive to learning.
- Not be discriminated against on the basis of sex, color, race, religion, national origin, or handicap.
- Expect to be fully informed of school rules and regulations.
- The right to due process of law with respect to suspension expulsion, and decisions which the student believes injures his/her rights.

Tipton R-VI Reserved Rights

- School lockers and desks are the property of the Board of Education and are provided for the convenience of students, and as such, are subject to periodic inspections.
- The school retains the authority to conduct routine patrols around student used parking areas. The interior of an automobile in the parking areas may be searched if the school authority has reasonable suspicion to believe that such a search will turn up evidence that a student has violated the law or school rules.
- If the administration reasonably suspects that a student is concealing a controlled substance, paraphernalia, weapons, stolen goods, or evidence of a crime beneath his or her clothing and refuses to surrender such articles the principal or their designee may complete a reasonable search of a student's shoes, pockets, bags, etc. Law enforcement officials shall be contacted to complete the search if the student does not submit voluntarily or does not cooperate completely with the search. The parents will be contacted.
- Interviews with police/juvenile officers, and others law enforcement agencies will be conducted with the principal present or his or her designee. The school administrator is responsible for making an effort to ensure student rights are not violated.
- When law officials are in the building to conduct interviews the building administrator will always verify and record the identity of the officer and the need to talk to the student in question. This shall be conducted in private and in the least disruptive manner.
- The Tipton R-VI School District has legal jurisdiction during the school day and during approved extra-curricular activities..
- Tipton R-VI reserves the right to use drug dogs (under police supervision) on and around campus areas, at any time.
- Every student will take the breath test when administered at a school

dance. If a school authority has reasonable suspicion that students are under the influence at other events then the student will be asked to use the breath test in a private area of least disruption. Parents will be notified when individual students have been asked to supply a breath analysis. Refusal could result in law officials being contacted.

- All students have a right to appeal decisions to the superintendent for all long term suspensions, (more than ten days), the student has due process rights and will be granted a hearing.. (see Bd. Policy)

Types of Consequences

Warning.... Self-explanatory

Detention..... Before school from 6:55 AM to 7:55 AM on Tuesday and Thursday or after school from 3:11 PM to 4:11 PM on Monday, Wednesday, and Friday.

S.M.A.P.... Saturday Morning Alternative Program from 8:30 to 11:30

I.S.S..... In school suspension The students will spend their entire day in a secluded environment doing school related work.

O.S.S. Out of School Suspension Students will not be allowed on school grounds and will not receive credit for their school work.

Similar Incidents...Students that continue to commit the same type of offenses will receive more consequences for these actions. This will hopefully discourage this type of continual behavior.

Activities...All disciplinary consequences will be fulfilled prior to taking part in or being a spectator of any school sponsored event or practice.

Discipline Code

The following steps shall be utilized in most instances. However, the principal may by pass any step if the seriousness of the situation warrants. These guidelines make no attempt to list all possible problem areas or to mention every possible disciplinary action. It is an attempt to address the majority of circumstances that might occur. Complete Board Policy is available for review in the office of each district administrator.

A. CLASSROOM CONDUCT

Behavior or actions on the part of the student which impedes orderly classroom procedures or interferes with the orderly operation of the school. **No student shall participate in the following activities:** classroom disturbance, failure to obey posted classroom rules, using forged notes or excuses, failure to complete assignments, or failure to carry out teacher reasonable directions.

FIRST AND SUBSEQUENT VIOLATIONS

Warning or daily detention, SMAP, ISS or OSS

B. NUISANCE ITEMS

No student shall bring or possess any items which may be considered a nuisance on the bus, in school, or on school property.

FIRST / SUBSEQUENT VIOLATIONS

The item or article will be confiscated and may or may not be returned. Further action of detention, SMAP, or suspension may be taken by the principal.

C. THEFT

No student shall take, possess, or conceal the property of another person or institution without their consent.

FIRST AND SUBSEQUENT VIOLATIONS

Daily detention, SMAP, suspension. Restitution and depending on the severity, referred to the authorities, and superintendent for a long term suspension or expulsion.

D. VANDALISM/CRIMINAL DAMAGE

The act of intentional destruction, defacing or tampering with the of property belonging to the Tipton R-VI School District or other parties. This shall also include tampering with or causing the discharge of any sprinkler system or extinguisher installed in the school for the prevention of fire or for the safety of the population of the school.

FIRST AND SUBSEQUENT VIOLATIONS

Daily detention, SMAP, suspension. Restitution and depending on the severity, referred to the authorities, and superintendent for a long term suspension or expulsion.

E. FIGHTING

Mutual combat in which both parties have contributed to the conflict by provocation or physical action.

FIRST VIOLATION

Five to ten days suspension depending on the severity with the possibility of alternative programs to substitute for up to 2 of those days. Possible referral to the proper authorities and the superintendent for long term suspension or expulsion. **Jr. High 3 to 10 days**

SECOND VIOLATION AND SUBSEQUENT VIOLATIONS

Ten day suspension and referral to superintendent for long term Suspension/Expulsion. Law enforcement will be contacted.

F. DISRESPECTFUL SPEECH OR CONDUCT/DISCRIMINATORY OR DISPARAGING LANGUAGE

1. Engaging in verbal, written, or symbolic actions that are loud, abusive, indecent, profane, boisterous, conduct that provokes a disturbance.
2. Use of words or action, verbal, written, or symbolic, meant to harass or injure another person; i.e. threat or defamation of a person's race, religion, gender, or ethnic origin.

FIRST AND SUBSEQUENT VIOLATIONS

Warning, Daily detention, SMAP, suspension.

G. INAPPROPRIATE FAMILIARITY BETWEEN STUDENTS

The act of engaging in hugging, kissing, or other inappropriate touching of other students at school, busses, or school events.

FIRST AND SUBSEQUENT VIOLATIONS

Warning, detention, SMAP, or suspension.

H. DISRESPECTFUL ACTIONS TOWARDS A STAFF MEMBER

Disrespectful verbal, written, or symbolic language or gestures which are inappropriate to public settings directed to a staff member.

FIRST AND SUBSEQUENT VIOLATIONS

Detention, SMAP, or suspension and/or referral to superintendent for long term suspension

I. THREATENING OR INTIMIDATING ACTS / BULLYING OR HAZING

The act of a student to push, shove, kick, trip, or take other inappropriate physical behavior toward one another student. The act of verbally, or by gesture threatening the well being, health, or safety of any person on school property or on route to or from school.

FIRST AND SUBSEQUENT VIOLATIONS

Detention, SMAP, or suspension and/or referral to superintendent for long term suspension

J. TOBACCO PRODUCTS

The possession or use of tobacco products while on school property or at any school or at any school sponsored activity. The products will be confiscated and not returned.

FIRST AND SUBSEQUENT VIOLATIONS

Detention, SMAP, ISS or OSS

Please note: Students who have signed a contract of conduct in athletics/activities will also be accountable for the consequences written in that contract.

K. ALCOHOL, DRUGS, AND NARCOTICS

The act of a student to knowingly buy, sell, possess, use, transmit, or be under the influence of alcohol, illicit drugs, unauthorized prescription or non prescription drugs, narcotics, or any substance used to induce a mind altering affect while at school, on school property, or at any school sponsored activity. The products will be confiscated and not returned.

FIRST AND SUBSEQUENT VIOLATIONS

Ten day suspension plus a recommendation to the superintendent and/or to the board of Education that the student receive a long term suspension or expulsion. All proper authorities and law agency contacted.

NOTE: With the recommendation of the principal or his/or her designee to the Board of Education, a student who submits to evaluation by an authorized agency on chemical dependency and complies with its recommendation and who submits evidence of the same may be readmitted to school prior to the completion of the suspension/expulsion.

L. POSSESSION OF SUSPECTED DRUG PARAPHERNALIA

No student shall knowingly possess or transmit any suspected drug related paraphernalia while on school property or at any school sponsored activity.

FIRST AND SUBSEQUENT VIOLATIONS

Confiscating and notification of parents or guardians and responsible law enforcement agencies. Up to ten days suspension with possible referral to the superintendent for a long term suspension.

M. FIREWORKS, WEAPONS, AND DANGEROUS INSTRUMENTS

No student shall possess, handle or transmit knives, razors, ice picks, fireworks, explosives, or any other objects that reasonably can be considered weapons while on school property or at any school sponsored activity. These objects are extremely dangerous and can result in serious injury.

FIRST AND SUBSEQUENT VIOLATIONS

Confiscation and/or suspension, and possibly a recommendation to the superintendent and/or the board of education that the student receive a long term suspension depending on the severity. LAW AGENCIES CONTACTED THE GUN-FREE SCHOOL ZONES ACT of 94. This law requires that educational agencies expel from school for a period of not less than one year any student who is determined to have brought a weapon to school. This law allows for the educational agencies chief officer (superintendent) to modify the expulsion if needed.

N. VIOLENT AND SAFETY THREATENING ACTS

Act which result in violence to another person or property, or which pose a direct threat to the safety of others in school. Student actions that are clearly criminal or serious in nature include, but are not limited to, extortion, bomb threats, assault and battery, serious vandalism, arson and grand theft.

FIRST AND SUBSEQUENT VIOLATIONS

The student is immediately removed from school. The parents, guardians, and law enforcement agencies are contacted. Ten day suspension plus a recommendation to the superintendent and/or board of education that the student receive a long suspension

O. SEXUAL HARASSMENT/PUBLIC NUDITY

Unwelcome sexual advances, request for sexual favors, and other verbal or physical conduct, public displays or communication. Use of verbal, written or symbolic language, sexually explicit pictures or words, gestures that are sexually harassing or vulgar in nature.

FIRST AND SUBSEQUENT VIOLATIONS

Detention, SMAP, or suspension up to ten days with possible referral to the superintendent for a long term suspension or expulsion. Parents and authorities may be contacted. *Sexual Harassment procedures as described in Bd. Policy will be utilized.*

P. INSUBORDINATION

The willful failure to respond or carry out a reasonable directive by authorized school personnel.

FIRST AND SUBSEQUENT VIOLATION

Warning, detention, SMAP, or suspension up to ten days with possible referral to the superintendent for a long term suspension.

Q. TRUANCY

The act of unauthorized absence for any portion of the school day. This will include an excused absence that is later verified as a false or misleading excuse for not being at school.

FIRST AND SUBSEQUENT VIOLATIONS

One hour of detention or SMAP for each hour missed (Discipline). It may be necessary for the student to make the time missed time in credit recovery as well (Attendance).

R. TARDINESS

The act being late to school, class, or any other part of the student's scheduled day. Tardies may not be excused by parents.

FIRST AND SUBSEQUENT VIOLATIONS

1. 1st period (late to school) **2 per quarter**. One a.m. detention for each tardy after that, with tardies going back to zero at the beginning of each quarter. All students must report to office for morning "late to school tardies".
2. Classroom Tardies **6 per semester**, following the chart in the student handbook.

S. DISTRIBUTION OF MATERIALS OR SOLICITATION

The act of distributing, displaying or announcing non-curricular materials to students, staff or patrons on the grounds of the Tipton R-VI School District without following the guidelines for this process in this handbook.

FIRST AND SUBSEQUENT VIOLATIONS

Warning, detention, SMAP, ISS, OSS.

T. BUS DISCIPLINE PROCEDURES

The following procedures for bus discipline apply to all grades K-12 and are maintained as a district wide policy by the Board of Education.

- The bus driver is responsible for referring students to the office who have had problems on the bus route. The bus driver will do this by using proper Bus Incident Report Form.
- Only the principal has the authority to take this action. The principal will notify the student, parents, and bus driver of all actions taken.
- A student who receives three incident reports will automatically receive a five day suspension of bus privileges from the principal.
- Upon receiving the fourth incident report, the student will receive a ten day suspension and on the fifth incident will receive a termination of all bus privileges for one year.
- A student may receive a bus suspension on the first or second offense

- depending on the severity of the incident.
- The student may also receive a suspension or discipline from school as a result of misconduct on the bus.
- Bus conduct begins on or around the bus or any bus loading areas (bus stops).

U. RIGHTS UNDER LONG TERM SUSPENSION

During a long term suspension the student has the following rights:

- Receive an oral or written notice of the charges against him/her.
- Be given the opportunity to present his/her version of the incident.
- Receive an oral or written explanation of the facts forming the charge if she/he denies it.
- Appeal the suspension to the superintendent or the board of education.

**While under suspension the student may not come on school property without consent of an administrator. He/she may not attend school sponsored activities, home or away from school. The student may receive homework and tests but no credit will be granted. In cases where the suspension is more than ten days, the student may have a lawyer present.*

A principal may suspend for up to ten days.

A superintendent for up to 90 days

The board of education for an indefinite period.

COMPUTER USE POLICY & DISCIPLINE

The Tipton R-VI School District is responsible for securing its computers, networks, and computing systems in a reasonable manner and protecting against unauthorized access and/or abuse, while making them accessible for authorized users. This responsibility includes informing users of expected standards of conduct and the punitive measures for not adhering to them. Any attempt to violate the provisions of this policy will result in disciplinary action in the form of temporary revocation of user privileges and/or accounts. Further disciplinary action will be taken depending on the seriousness of the offense.

Users of computers owned by the Tipton R-VI Schools are responsible for respecting and adhering to local, state, federal and international laws as well as MOREnet's Acceptable Use Policy.

Authorized personnel have the right to access information on the computers, networks, and computing systems. Any attempt to break laws using school-owned hardware or software may result in litigation against the offender by the proper authorities. If such an event should occur, the school will fully comply with the authorities to provide any information necessary for prosecution.

Any unauthorized, deliberate action that damages or disrupts a computing system, alters its normal performance, or causes it to malfunction is a violation regardless of system location or time duration and will be subject to disciplinary action. Rules applying to objectionable materials in other forms will also apply to objectionable materials in electronic form.

1. Attempts to claim as original work any materials obtained in electronic format will be considered plagiarism.
2. Deletion, examination, copying, or modification of files and/or data belonging to other users without their prior consent is prohibited. This includes re-arranging desktop icons and changing display or other settings
3. Logging in using another student's account will result in both students being disciplined.
4. The willful introduction of computer "viruses" or other disruptive/destructive programs into individual computers, networks, or computing systems in this school or on remote computers/networks will result in disciplinary action.
5. All portable storage devices will be scanned prior to information being downloaded from them.
6. No software may be installed on school-owned computers without permission from the Technology Director and/or Building Principal. This includes downloading programs from the Internet.
7. Use of facilities and/or services for commercial or political purposes is prohibited.
8. Personal information about yourself or others should not be revealed over the Internet.
9. Shared resources may not be monopolized by any single user.
10. Downloading or sharing music files ties up network bandwidth and is prohibited.
11. Copying of copyrighted software, such as third-party software without the express written permission of the owner of the proper license, is prohibited. This includes music files obtained using Napster or similar programs.
12. Computers are provided for educational purposes, not for personal entertainment.
13. Users who have been issued a user id and/or password are responsible for keeping it secure.
14. Students may not check their personal e-mail or send messages using school computers. E-Mail is prohibited except as part of a class project under the direct supervision of a teacher.

Web Browsers and the Internet

You are responsible for materials intentionally accessed, downloaded, or printed from any site. Through the vast resources of the Internet, you will have access to objectionable materials, some of which you will accidentally encounter. It is your responsibility to act in a reasonable and prudent manner regarding these materials. Any objectionable materials intentionally accessed, downloaded, or printed out will be treated the same as possession of such materials in non-electronic form.

Ability to search on the Internet should be considered a valuable addition to regular library research and classroom work, not a substitute for doing your own work. Attempts to claim as original work any materials obtained in electronic form will be considered plagiarism.

Equipment

All school owned computer hardware and software is to be treated with respect. Intentional damage will result in disciplinary action as well as charges for cost of repairs. Repairs for damage accrued through negligence may also result in disciplinary action and/or charges.

E-Mail

1. Personal e-mail is not allowed! If e-mail is used as part of a class, the following rules will apply as well as any other rules given you by the teacher.
2. You are responsible for any electronic mail sent by you or sent under your user id. You are also responsible for protecting the privacy of other computer users.
3. Forgery (or attempted forgery) of electronic mail messages is prohibited.
4. Attempts to read, delete, copy, or modify electronic mail of other users are prohibited.
5. Attempts to send harassing, obscene and/or other threatening messages to another user at this school or anyone else on any other network are prohibited. Disciplinary action will result whether or not the attempt was successful.
6. Attempts at sending unsolicited junk mail, commercial (for-profit) messages, or chain letters are prohibited.

PUBLIC NOTICE OF ADA REQUIREMENTS

Tipton R-VI School District does not discriminate on the basis of disability in admission to, or operations of its programs, services or activities. Tipton R-VI School District does not discriminate on the basis of disability in its hiring practices.

This notice is provided as required by Title II of the Americans with Disabilities Act of 1990.

Questions, concerns, complaints, or request for additional information regarding the ADA may be forwarded to Tipton R-VI School District's designated ADA compliance Coordinator:

Mrs. Karla Wood, Elementary Counselor
Tipton R-VI Schools
305 E.HWY 50
Tipton, MO 65081
Telephone: 660-433-2213

Individuals who need auxiliary aids for effective communication in programs and services of the Tipton R-VI School are invited to make their needs and preference known to the ADA Compliance Coordinator. This notice can be made available in large print, on audio tape, and Braille, from the ADA Compliance Coordinator if necessary.

PUBLIC NOTICE

All public schools are required to provide a free and appropriate public education to all students with disabilities, including those attending private/parochial schools, beginning on the child's third birthday through age twenty (20), regardless of the child's disability. The public school assures to comply with the full educational opportunity goal, services for students three (3) through twenty-one (21) will be fully implemented by 1999. Disabilities include: learning disabilities, mental retardation, behavior disorders/emotional disturbance, speech disorders (voice, fluency, or articulation), language disorders, visually impaired, hearing impaired, physically/other health impaired, multiple disabilities, deaf/blind, autism, early childhood special education, and traumatic brain injury.

The public school assures that it will provide information and referral services necessary to assist the State in the implementation of early intervention services for infants and toddlers eligible for the Missouri's First Steps Program. Early intervention services will be available for all eligible children by July 1, 1995.

All public schools are required to provide parents the right to inspect and review personally identifiable information collected and used or maintained by the district relating to their children. Parents have the right to request amendment of these records if they feel the information is inaccurate, misleading, or violates the privacy or other rights of their children. Parents have the right to file complaints with the U.S. Department of Education or the Missouri Department of Elementary and Secondary Education concerning alleged failures by the district to meet the requirements of the Family Educational Rights and Privacy Act (FERPA). You may contact your local district if you wish to review the requirements provided in FERPA.

The public school has developed a Local Compliance Plan for implementation of Special Education and this Plan is available for public review during regular school hours on days school is in session in the Office of the Superintendent of Schools. The Local Compliance Plan is a written narrative which describes the district's plan for compliance with the requirements for identifying and serving all students with disabilities. Included in this plan are the policies and procedures which the district must follow regarding storage, disclosure to third parties, retention, and destruction of personally identifiable information. The plan also describes the assurances that services are provided in compliance with the requirement of 34 CFR 76.301 of the General Education Provision Act.

Public schools in Missouri are required to conduct an annual census of all children with disabilities or suspected disabilities from birth through age twenty who reside in the district or whose parent/legal guardian's name/address; birth date and age of each child; and each child's disability or suspected disability. Should the district fail to submit an annual census, the State Board of Education may withhold state aid until the census is submitted. If you have a child with a disability or know of a child with a disability who is not attending the public school, please contact your school district.

This notice can be provided in languages such as Chinese, Spanish, Arabic, and Vietnamese or any other language as may be necessary.

Public Notice

DISTRIBUTION OF NONCURRICULAR STUDENT PUBLICATIONS

I. Guidelines

Students may distribute, at reasonable times and places, unofficial material, including but not limited to petitions, buttons, badges, or other insignia. If the district allows students to use its technology resources for non-curricular purposes, any exchange of unofficial material which is delivered or accessed using district technology resources is also subject to this policy. However, students cannot distribute expressions which:

- A. Are obscene to minors.
- B. Are libelous.
- C. Are pervasively indecent or vulgar (secondary schools) contain any indecent or vulgar language (elementary schools).
- D. Advertise any product or service not permitted to minors by law.
- E. Constitute insulting or fighting words, the very expression of which injures or harasses other people (e.g., threats of violence, defamation of character or of a person's race, religion or ethnic origin).
- F. Present a clear and present likelihood that, either because of their content or their manner of distribution, will cause a material and substantial disruption of the proper and orderly operation and discipline of the school or school activities, will cause the commission of unlawful acts or the violation of lawful school procedures.

II. Procedures

Anyone wishing to distribute unofficial material must first submit for approval a copy of the material to the principal or designee at least 24 hours in advance of desired distribution time, together with the following information:

- A. Name and phone number of the person submitting request.
- B. Date(s) and time(s) of day of intended distribution.
- C. Location where material will be distributed.
- D. Date(s) that the materials will be removed.
- E. The grade(s) of students to whom the distribution is intended. Within 24 hours of submission, the principal (or his or her designee) will render a decision whether the material violates the Guidelines in Section I or the time, place and manner restrictions in Section III of this policy. In the event that permission to distribute the material is denied, the person submitting the request should be informed in writing of the reasons for the denial.
- F. Permission to distribute material does not imply approval of its contents by the school, the administration, the Board, or the individual reviewing the material submitted.
- G. If the person submitting the request does not receive a response within 24 hours of submission, the person shall contact the office to verify that the lack of response was not

due to an inability to locate the person. If the person has made this verification and there is no response to the request, the material may be distributed in accordance with the time, place and manner provisions in Section III.

- H. If the person is dissatisfied with the decision of the principal (or designee), the person may submit a written request for appeal to the superintendent of schools or his or her secretary.
- I. If the person does not receive a response within three days (not counting Saturdays, Sundays and holidays) of submitting the appeal, the person shall contact the office of the superintendent to verify that the lack of response is not due to an inability to locate the person.
- J. If the person has made this verification and there is no response to the appeal, the material may be distributed in accordance with the time, place and manner provisions in Section III.
- K. At every level of the process, the person submitting the request shall have the right to appear and present the reasons supported by relevant witnesses and material, as to why distribution of the unofficial material is appropriate.

III. Time, Place and Manner of Distribution

The distribution of unofficial material shall be limited to a reasonable time, place and manner as follows:

- A. No unofficial material may be distributed during and at the place of a normal school activity if it is reasonably likely to cause a material and substantial disruption of that activity.
- B. Distribution of unofficial material is prohibited when it blocks the safe flow of traffic within corridors and entrance ways of the school or when it disrupts the use of district technology resources.

IV. Definitions

The following definitions apply to the following terms as used in this policy:

- A. "*Obscene to minors*" is defined as:
 - i. The average person, applying contemporary community standards, would find that the unofficial material, taken as a whole, appeals to the prurient interest of minors of the age to whom distribution is requested; and/or
 - ii. The unofficial material depicts or describes, in a manner that is patently offensive to prevailing standards in the adult community concerning how such conduct should be presented to minors of the age to whom distribution is requested, sexual conduct such as intimate sexual acts (normal or perverted), masturbation, excretory functions, and lewd exhibition of the genitals; and/or

- iii. The unofficial material, taken as a whole, lacks serious literary, artistic, political or scientific value for minors.
- B. "*Minor*" means any person under the age of 18.
- C. "*Material and substantial disruption*" of a normal school activity is defined as follows:
 - i. Where the normal school activity is an educational program of the district for which student attendance is compulsory, "material and substantial disruption" is defined as any disruption which interferes with or impedes the implementation of that program.
 - ii. Where the normal school activity is voluntary in nature (including, without limitation, school athletic events, school plays and concerts, and lunch periods), "material and substantial disruption" is defined as student rioting, unlawful seizures of property, widespread shouting or boisterous conduct inappropriate to the event, participation in a school boycott, demonstration, sit-in, stand-in, walk-out or other related forms of activity.
 - iii. In order for an expression to be considered disruptive, there must exist specific facts upon which the likelihood of disruption can be forecast, including past experience in the school, current events influencing student activities and behavior, and instances of actual or threatened disruption relating to the material in question.
- D. "*School activities*" means any activity of students sponsored by the school and includes -- by way of example, and not by way of limitation -- classroom work, library activities, physical education classes, official assemblies and other similar gatherings, school athletic contests, band concerts, school plays, and in-school lunch periods.
- E. "*Unofficial material*" includes all written or pictorial communications except school publications funded and/or sponsored or authorized by the school. Examples include leaflets, buttons, badges, insignia, brochures, flyers, petitions, placards, underground newspapers, websites, links to websites, and e-mails, whether created by students or others.
- F. "*Libelous*" is a false and unprivileged statement about a specific individual that tends to harm the individual's reputation, or to lower him or her in the esteem of the community.
- G. "*Distribution*" means circulation or dissemination of unofficial material by means of handing out free copies, selling or offering copies for sale and accepting donations for copies or delivery via district technology. It includes

displaying unofficial material in areas of the school which are generally frequented by students.

V. Disciplinary Action

Distribution by a student of unofficial material prohibited in Section I or in violation of Section III may be treated as a violation of the student discipline code.

VI. Notice of Policy to Students

A copy of this policy will be published in student handbooks and posted conspicuously in school buildings.

Note: The reader is encouraged to review administrative procedures and/or forms for related information in support of this policy area.

PUBLIC NOTICE TO THE PATRONS OF THE TIPTON R-VI DISTRICT

Our district is required to inform you of certain information that you, according to The No Child Left Behind Act of 2001 (Public Law 107-110), have the right to know.

Upon request, our school is required to provide to you in a timely manner, the following information:

- Whether the teacher has met state qualification and licensing criteria for the grade levels and subject areas in which the teacher provides instruction.
- Whether the teacher is teaching under an emergency or other provisional status.
- Whether your child is provided services by paraprofessionals and if so, their qualifications.
- What baccalaureate degree major the teacher has and any other graduate certification or degree held by the teacher, and the field of discipline of the certification.

In addition to the information that parents may request, the district must provide to each individual parent

- Information on the achievement level of the parent's child in each of the state academic assessment areas.
- Timely notice that a parent's child has been assigned, or has been taught for four or more consecutive weeks by, a teacher who is not highly qualified.