

GREENVILLE COUNTY SCHOOLS  
STUDENT ASSIGNMENT  
PROPOSAL

New Fountain Inn High  
Hillcrest High  
Mauldin High

## Greenville County Schools

### Student Assignment

#### New Fountain Inn High, Hillcrest High and Mauldin High Schools

September 3, 2019

Greenville County Schools (GCS) continues to experience student population growth in the Golden Strip area of the district. GCS has planned for this growth with the goal of decreasing the student population at our two largest high schools, Hillcrest High and Mauldin High Schools, and space for continued growth. Both schools populations are significantly over 2,000 students. Projections are that the Golden Strip area will continue to increase in population.

Greenville County Schools is constructing the new Fountain Inn High School located at 600 Quillen Avenue, Fountain Inn, SC 29644 to open in August 2021. This construction project was planned to shift student populations among the three schools, Hillcrest High, Mauldin High and the new Fountain Inn High School. School Board Policy AD governs student assignment. You can find out more about the new Fountain Inn High School by visiting the school's website: [Fountain Inn High School](#)

Included with this document:

Current school attendance area maps with outlined changes in student assignment shown on the map.

Data sheets for the new Fountain Inn High School, Hillcrest High and Mauldin High Schools.

Students currently attending Hillcrest or Mauldin High Schools will not be impacted. The proposal is to open the new Fountain Inn High School with 9<sup>th</sup> grade in 2021-22, adding a grade each year, with all four grades, 9<sup>th</sup> through 12<sup>th</sup>, attending in the 2024-25 school year. Students currently in 7<sup>th</sup> grade for the 2019-20 school year will be 9<sup>th</sup> grade students the year Fountain Inn High opens. The same will apply to students assigned to Hillcrest High from Mauldin High.

Families of students that have another student at Hillcrest or Mauldin High School will have the option of their rising 9<sup>th</sup> grade student for the 2021-22 school attending with their older sibling.

The Special Education Department will continue to assign self-contained special education students to schools equipped to provide for their specific disability.

You can determine the geocode you reside in by going to the [district website](#), clicking on the left on Quicklinks and clicking on "Find Your School" and entering your address.

Input and/or questions may be submitted in several ways:

1. E-mail to [planning@greenville.k12.sc.us](mailto:planning@greenville.k12.sc.us)
2. Writing to: Greenville County Schools, Planning and Demographics Department, 2 Space Drive, Taylors, SC 29687
3. Parents may attend one of the meetings for those assigned to the new Fountain Inn High as follows:
  - Monday, September 9, 2019 @ 4:00 p.m. – Fountain Inn Elementary, 608 Fairview St, Fountain Inn, SC 29644
  - Tuesday, September 10, 2019 @ 6:30 p.m. – Fountain Inn Elementary, 608 Fairview St, Fountain Inn, SC 29644

- Tuesday, September 17, 2019 @ 6:30 p.m. – Rudolph Gordon School, 1507 Scuffletown Road, Simpsonville, SC 29681
4. Parents may attend a meeting for those assigned to Hillcrest High School from Mauldin High School as follows:
    - Thursday, September 12, 2019 @ 6:30 p.m. at Hillcrest Middle School, 510 Garrison Road, Simpsonville, SC 29681
  5. View the maps at the Planning and Demographics Department, 2 Space Drive, Taylors, SC 29687 as follows:

For parents of students assigned to the new Fountain Inn High School:  
Friday, September 13, 2019 from 9:00 a.m. until 11:00 a.m.

For parents of students assigned to Hillcrest High from Mauldin High:  
Wednesday, September 18 from 9:00 a.m. until 11:00 a.m.

For input to be considered it must be received by 5:00 p.m. on Thursday, September 19, 2019

The District administration will review all sources of input, make adjustments as deemed appropriate, and present a recommendation to the Board of Trustees at their regularly scheduled meeting in October 2019.

Student Assignment Proposal  
(Geocode Numbers with Choice Out)

Fountain Inn High School  
600 Quillen Ave  
Fountain Inn, SC 29644

| <b>School</b> | <b>Program<br/>Capacity<br/>(1)</b> | <b>Students<br/>Current<br/>Geocode<br/>Choice Out<br/>2018-19</b> | <b>Students<br/>Projected<br/>Geocode<br/>Based on<br/>Plan and<br/>Choice Out</b> | <b>%<br/>Facility<br/>Utilization<br/>Current<br/>Geocode<br/>2018-19</b> | <b>%<br/>Facility<br/>Utilization<br/>Projected<br/>Based on<br/>Plan</b> | <b>% FARMS<br/>Current<br/>Geocode<br/>Choice Out<br/>2018-19</b> | <b>%<br/>FARMS<br/>Projected<br/>Based on<br/>Plan and<br/>Choice Out</b> | <b>ELA<br/>% Met<br/>and<br/>Above<br/>Current<br/>Geocode<br/>2018-19</b> | <b>ELA<br/>% Met<br/>and<br/>Above<br/>Projected<br/>Based on<br/>Plan</b> | <b>Math(2)<br/>% Met<br/>and<br/>Above<br/>Current<br/>Geocode<br/>2018-19</b> | <b>Math(2)<br/>% Met<br/>and<br/>Above<br/>Projected<br/>Based on<br/>Plan</b> | <b>Lots To<br/>Go<br/>Projected<br/>Based on<br/>Plan</b> |
|---------------|-------------------------------------|--|--|---|---|---|---|--|--|--|--|---|
| Hillcrest     | 2140                                | 2137   | 1671   | 99.86%  | 78.08%  | 32.85%  | 27.77%  | 86.13%   | 86.79%   | 74.95%   | 77.26%   | 2205  |
| Mauldin       | 2211                                | 2287   | 1852   | 103.44%   | 83.76%  | 23.70%  | 24.19%  | 87.55%   | 87.95%   | 81.41%   | 81.95%   | 641   |
| Fountain Inn  | 1000                                |  | 901  |   | 90.10%  |   | 36.85%  |  | 84.74%   |  | 72.62%   | 814   |

(1) Capacity is based on the Program Capacity from the Long Range Facilities Plan

(2) Math is based on those taking Algebra test

Note: Geocode numbers represent actual students residing in the geocodes (with choice out) and are used in planning as Fountain Inn High School's population plan includes reassignment from Hillcrest and Mauldin High schools.

Actual student enrollment at schools is different based on yearly decisions of parents to participate in the district's limited school choice programs and special education placements.

2018-19 actual 15th day student enrollments:

- Hillcrest: 2190
- Mauldin: 2345

## Student Assignment Proposal

Fountain Inn High School  
600 Quillen Avenue  
Fountain Inn, SC 29644

| <b>GEOCODE<br/>Recommended Assignment<br/>Changes</b> | <b>From</b>    | <b>To</b>         | <b>Total #<br/>Students</b> |
|---|----------------|-------------------|-----------------------------|
| AAW1  | Hillcrest High | Fountain Inn High | 29                          |
| BDC1  | Hillcrest High | Fountain Inn High | 22                          |
| CAR1  | Hillcrest High | Fountain Inn High | 13                          |
| CHR1  | Hillcrest High | Fountain Inn High | 1                           |
| CLN1  | Hillcrest High | Fountain Inn High | 3                           |
| CLV2  | Hillcrest High | Fountain Inn High | 1                           |
| CLW1  | Hillcrest High | Fountain Inn High | 25                          |
| CSR1  | Hillcrest High | Fountain Inn High | 18                          |
| CTG1  | Hillcrest High | Fountain Inn High | 64                          |
| DUR1  | Hillcrest High | Fountain Inn High | 17                          |
| DUR2  | Hillcrest High | Fountain Inn High | 15                          |
| EGC1  | Hillcrest High | Fountain Inn High | 7                           |
| FCR1  | Hillcrest High | Fountain Inn High | 10                          |
| FIM1  | Hillcrest High | Fountain Inn High | 1                           |
| FIM2  | Hillcrest High | Fountain Inn High | 0                           |
| GAT1  | Hillcrest High | Fountain Inn High | 15                          |
| GRN1  | Hillcrest High | Fountain Inn High | 11                          |
| GSE1  | Hillcrest High | Fountain Inn High | 4                           |
| HAC1  | Hillcrest High | Fountain Inn High | 3                           |
| HAR1  | Hillcrest High | Fountain Inn High | 7                           |
| HFD1  | Hillcrest High | Fountain Inn High | 0                           |
| HHJ1  | Hillcrest High | Fountain Inn High | 7                           |
| HVR1  | Hillcrest High | Fountain Inn High | 61                          |
| HWY4  | Hillcrest High | Fountain Inn High | 2                           |
| JRD1  | Hillcrest High | Fountain Inn High | 0                           |
| JSM1  | Hillcrest High | Fountain Inn High | 1                           |
| LAC1  | Hillcrest High | Fountain Inn High | 25                          |
| LNB1  | Hillcrest High | Fountain Inn High | 26                          |
| LPD1  | Hillcrest High | Fountain Inn High | 11                          |
| LRN4  | Hillcrest High | Fountain Inn High | 1                           |
| LVC1  | Hillcrest High | Fountain Inn High | 9                           |
| LVR1  | Hillcrest High | Fountain Inn High | 20                          |
| MIL1  | Hillcrest High | Fountain Inn High | 0                           |
| NMS2  | Hillcrest High | Fountain Inn High | 39                          |
| OFR1  | Hillcrest High | Fountain Inn High | 0                           |
| QLN1  | Hillcrest High | Fountain Inn High | 0                           |
| RCR1  | Hillcrest High | Fountain Inn High | 4                           |
| RRW1  | Hillcrest High | Fountain Inn High | 43                          |
| SAV1  | Hillcrest High | Fountain Inn High | 3                           |
| SCU1  | Hillcrest High | Fountain Inn High | 10                          |
| SDC1  | Hillcrest High | Fountain Inn High | 1                           |
| SFH1  | Hillcrest High | Fountain Inn High | 32                          |
| SGD1  | Hillcrest High | Fountain Inn High | 3                           |
| SMS1  | Hillcrest High | Fountain Inn High | 14                          |
| STD1  | Hillcrest High | Fountain Inn High | 23                          |
| WES1  | Hillcrest High | Fountain Inn High | 23                          |
| WLC1  | Hillcrest High | Fountain Inn High | 26                          |
| WOV1  | Hillcrest High | Fountain Inn High | 25                          |

| <b>GEOCODE<br/>Recommended Assignment<br/>Changes</b> | <b>From</b>    | <b>To</b>         | <b>Total #<br/>Students</b> |
|---|----------------|-------------------|-----------------------------|
| WTA1  | Hillcrest High | Fountain Inn High | 21                          |
| WTM1  | Hillcrest High | Fountain Inn High | 12                          |
|   |                | SUBTOTAL          | 708                         |
| ENR1  | Mauldin High   | Fountain Inn High | 20                          |
| ENR2  | Mauldin High   | Fountain Inn High | 39                          |
| JWV1  | Mauldin High   | Fountain Inn High | 9                           |
| JWV2  | Mauldin High   | Fountain Inn High | 44                          |
| JWV3  | Mauldin High   | Fountain Inn High | 41                          |
| WHP1  | Mauldin High   | Fountain Inn High | 40                          |
|   |                | SUBTOTAL          | 193                         |
| GRAND TOTAL FOUNTAIN INN HIGH SCHOOL                  |                |                   | 901                         |

Single family approved lots to be built in recommended attendance area - 814

Student Assignment Proposal  
Fountain Inn High School

**Other Schools Impacted**

| <b>GEOCODE<br/>Recommended Assignment Changes</b> | <b>From</b>  | <b>To</b>      | <b>Total # Students</b> |
|---|--------------|----------------|-------------------------|
| BKM1  | Mauldin High | Hillcrest High | 0                       |
| BRS1  | Mauldin High | Hillcrest High | 108                     |
| GMW1  | Mauldin High | Hillcrest High | 0                       |
| PBF1  | Mauldin High | Hillcrest High | 30                      |
| PTR1  | Mauldin High | Hillcrest High | 47                      |
| PTR2  | Mauldin High | Hillcrest High | 57                      |
| SHR1  | Mauldin High | Hillcrest High | 0                       |
| TOTAL TO HILLCREST HIGH                           |              |                | 242                     |
| GRAND TOTAL FOUNTAIN INN HIGH SCHOOL              |              |                | 901                     |
| GRAND TOTAL OTHER SCHOOLS                         |              |                | 242                     |
| TOTAL STUDENTS REASSIGNED                         |              |                | 1143                    |

Student Assignment Proposal  
Fountain Inn High School  
Feeder Patterns

| GEOCODE                           | Current Assignment ELEM | Current Assignment MIDDLE | Current Assignment HIGH | Total # Students | % FARM HIGH | Lots To Go | TEST % HIGH ELA | TEST % HIGH MATH |
|-----------------------------------|-------------------------|---------------------------|-------------------------|------------------|-------------|------------|-----------------|------------------|
| CTG1                              | Bryson                  | Bryson                    | Hillcrest               | 64               |             | 0          |                 |                  |
| FCR1                              | Bryson                  | Bryson                    | Hillcrest               | 10               |             | 0          |                 |                  |
| JSM1                              | Bryson                  | Bryson                    | Hillcrest               | 1                |             | 0          |                 |                  |
| QLN1                              | Bryson                  | Bryson                    | Hillcrest               | 0                |             | 0          |                 |                  |
| WTA1                              | Bryson                  | Bryson                    | Hillcrest               | 21               |             | 0          |                 |                  |
| TOTAL TO FOUNTAIN INN HIGH SCHOOL |                         |                           |                         | 96               | 56.25%      | 0          |                 |                  |
| AAW1                              | Fountain Inn            | Bryson                    | Hillcrest               | 29               |             | 0          |                 |                  |
| CAR1                              | Fountain Inn            | Bryson                    | Hillcrest               | 13               |             | 0          |                 |                  |
| CHR1                              | Fountain Inn            | Bryson                    | Hillcrest               | 1                |             | 0          |                 |                  |
| CLN1                              | Fountain Inn            | Bryson                    | Hillcrest               | 3                |             | 0          |                 |                  |
| CLW1                              | Fountain Inn            | Bryson                    | Hillcrest               | 25               |             | 0          |                 |                  |
| EGC1                              | Fountain Inn            | Bryson                    | Hillcrest               | 7                |             | 0          |                 |                  |
| FIM1                              | Fountain Inn            | Bryson                    | Hillcrest               | 1                |             | 0          |                 |                  |
| FIM2                              | Fountain Inn            | Bryson                    | Hillcrest               | 0                |             | 0          |                 |                  |
| GAT1                              | Fountain Inn            | Bryson                    | Hillcrest               | 15               |             | 30         |                 |                  |
| GRN1                              | Fountain Inn            | Bryson                    | Hillcrest               | 11               |             | 0          |                 |                  |
| GSE1                              | Fountain Inn            | Bryson                    | Hillcrest               | 4                |             | 0          |                 |                  |
| HAC1                              | Fountain Inn            | Bryson                    | Hillcrest               | 3                |             | 80         |                 |                  |
| HAR1                              | Fountain Inn            | Bryson                    | Hillcrest               | 7                |             | 0          |                 |                  |
| HFD1                              | Fountain Inn            | Bryson                    | Hillcrest               | 0                |             | 0          |                 |                  |
| HVR1                              | Fountain Inn            | Bryson                    | Hillcrest               | 61               |             | 0          |                 |                  |
| LNB1                              | Fountain Inn            | Bryson                    | Hillcrest               | 26               |             | 0          |                 |                  |
| MIL1                              | Fountain Inn            | Bryson                    | Hillcrest               | 0                |             | 0          |                 |                  |
| NMS2                              | Fountain Inn            | Bryson                    | Hillcrest               | 39               |             | 0          |                 |                  |
| OFR1                              | Fountain Inn            | Bryson                    | Hillcrest               | 0                |             | 0          |                 |                  |
| RCR1                              | Fountain Inn            | Bryson                    | Hillcrest               | 4                |             | 0          |                 |                  |
| RRW1                              | Fountain Inn            | Bryson                    | Hillcrest               | 43               |             | 0          |                 |                  |
| SDC1                              | Fountain Inn            | Bryson                    | Hillcrest               | 1                |             | 0          |                 |                  |
| SFH1                              | Fountain Inn            | Bryson                    | Hillcrest               | 32               |             | 0          |                 |                  |
| SMS1                              | Fountain Inn            | Bryson                    | Hillcrest               | 14               |             | 0          |                 |                  |
| WES1                              | Fountain Inn            | Bryson                    | Hillcrest               | 23               |             | 15         |                 |                  |
| WLC1                              | Fountain Inn            | Bryson                    | Hillcrest               | 26               |             | 0          |                 |                  |
| WOV1                              | Fountain Inn            | Bryson                    | Hillcrest               | 25               |             | 13         |                 |                  |
| TOTAL TO FOUNTAIN INN HIGH SCHOOL |                         |                           |                         | 413              | 46.00%      | 138        |                 |                  |
| BDC1                              | Rudolph Gordon          | Rudolph Gordon            | Hillcrest               | 22               |             | 94         |                 |                  |
| CLV2                              | Rudolph Gordon          | Rudolph Gordon            | Hillcrest               | 1                |             | 0          |                 |                  |
| CSR1                              | Rudolph Gordon          | Rudolph Gordon            | Hillcrest               | 18               |             | 14         |                 |                  |
| DUR1                              | Rudolph Gordon          | Rudolph Gordon            | Hillcrest               | 17               |             | 0          |                 |                  |
| DUR2                              | Rudolph Gordon          | Rudolph Gordon            | Hillcrest               | 15               |             | 0          |                 |                  |
| HHJ1                              | Rudolph Gordon          | Rudolph Gordon            | Hillcrest               | 7                |             | 123        |                 |                  |
| HWY4                              | Rudolph Gordon          | Rudolph Gordon            | Hillcrest               | 2                |             | 0          |                 |                  |
| JRD1                              | Rudolph Gordon          | Rudolph Gordon            | Hillcrest               | 0                |             | 34         |                 |                  |
| LAC1                              | Rudolph Gordon          | Rudolph Gordon            | Hillcrest               | 25               |             | 0          |                 |                  |

| GEOCODE                              | Current Assignment<br>ELEM | Current Assignment<br>MIDDLE | Current Assignment<br>HIGH | Total #<br>Students | %<br>FARM<br>HIGH | Lots To<br>Go | TEST<br>%<br>HIGH<br><b>ELA</b> | TEST<br>%<br>HIGH<br><b>MATH</b> |
|--------------------------------------|----------------------------|------------------------------|----------------------------|---------------------|-------------------|---------------|---------------------------------|----------------------------------|
| LPD1                                 | Rudolph Gordon             | Rudolph Gordon               | Hillcrest                  | 11                  |                   | 0             |                                 |                                  |
| LRN4                                 | Rudolph Gordon             | Rudolph Gordon               | Hillcrest                  | 1                   |                   | 0             |                                 |                                  |
| LVC1                                 | Rudolph Gordon             | Rudolph Gordon               | Hillcrest                  | 9                   |                   | 36            |                                 |                                  |
| LVR1                                 | Rudolph Gordon             | Rudolph Gordon               | Hillcrest                  | 20                  |                   | 0             |                                 |                                  |
| SAV1                                 | Rudolph Gordon             | Rudolph Gordon               | Hillcrest                  | 3                   |                   | 64            |                                 |                                  |
| SCU1                                 | Rudolph Gordon             | Rudolph Gordon               | Hillcrest                  | 10                  |                   | 0             |                                 |                                  |
| SGD1                                 | Rudolph Gordon             | Rudolph Gordon               | Hillcrest                  | 3                   |                   | 32            |                                 |                                  |
| STD1                                 | Rudolph Gordon             | Rudolph Gordon               | Hillcrest                  | 23                  |                   | 90            |                                 |                                  |
| WTM1                                 | Rudolph Gordon             | Rudolph Gordon               | Hillcrest                  | 12                  |                   | 0             |                                 |                                  |
| TOTAL TO FOUNTAIN INN HIGH SCHOOL    |                            |                              |                            | 199                 | 25.13%            | 487           |                                 |                                  |
| ENR1                                 | Rudolph Gordon             | Rudolph Gordon               | Mauldin                    | 20                  |                   | 134           |                                 |                                  |
| ENR2                                 | Rudolph Gordon             | Rudolph Gordon               | Mauldin                    | 39                  |                   | 55            |                                 |                                  |
| JWV1                                 | Rudolph Gordon             | Rudolph Gordon               | Mauldin                    | 9                   |                   | 0             |                                 |                                  |
| JWV2                                 | Rudolph Gordon             | Rudolph Gordon               | Mauldin                    | 44                  |                   | 0             |                                 |                                  |
| JWV3                                 | Rudolph Gordon             | Rudolph Gordon               | Mauldin                    | 41                  |                   | 0             |                                 |                                  |
| WHP1                                 | Rudolph Gordon             | Rudolph Gordon               | Mauldin                    | 40                  |                   | 0             |                                 |                                  |
| TOTAL TO FOUNTAIN INN HIGH SCHOOL    |                            |                              |                            | 193                 | 19.69%            | 189           |                                 |                                  |
| GRAND TOTAL FOUNTAIN INN HIGH SCHOOL |                            |                              |                            | 901                 | 36.85%            | 814           | 84.74%                          | 72.62%                           |

Note: Reflects Growth Study 2019 Lots To Go

Student Assignment Proposal  
Fountain Inn High School  
Feeder Pattern Effects

| <b>Recommended Assignment<br/>NEW HIGH</b> | <b>Recommended Assignment<br/>ELEMENTARY</b> | <b>Recommended Assignment<br/>MIDDLE</b> |
|--|--|--|
| Fountain Inn                               | Bryson<br>Fountain Inn<br>Rudolph Gordon     | Bryson<br>Rudolph Gordon                 |

**Other Impacted Schools**

| <b>Current Assignment<br/>HIGH</b> | <b>Current Assignment<br/>ELEMENTARY</b>  | <b>Current Assignment<br/>MIDDLE</b>  |
|------------------------------------|---|---------------------------------------|
| Hillcrest                          | Bells Crossing<br>Bethel<br>Bryson<br>Fountain Inn<br>Greenbrier<br>Plain<br>Rudolph Gordon | Bryson<br>Hillcrest<br>Rudolph Gordon |
| Effect of Recommended Change       | Eliminates Fountain Inn<br>Eliminates Rudolph Gordon  | Eliminates Rudolph Gordon             |

| <b>Current Assignment<br/>HIGH</b> | <b>Current Assignment<br/>ELEMENTARY</b>  | <b>Current Assignment<br/>MIDDLE</b>   |
|------------------------------------|---|--|
| Mauldin                            | Bells Crossing<br>Bethel<br>Greenbrier<br>Mauldin<br>Monarch<br>Oakview<br>Rudolph Gordon<br>Thomas E Kerns | Dr. Phinnize J Fisher<br>Hillcrest<br>Mauldin<br>Riverside<br>Rudolph Gordon<br>Tanglewood |
| Effect of Recommended Change       | Eliminates Rudolph Gordon   | Eliminates Rudolph Gordon  |

Student Assignment Proposal  
Fountain Inn High School  
Subdivisions and Multifamily

| <b><u>Subdivision</u></b> | <b><u>GEO</u></b> | <b><u>ELEM</u></b> | <b><u>MIDDLE</u></b> | <b><u>HIGH</u></b> |
|---------------------------|-------------------|--------------------|----------------------|--------------------|
| AN OLD FARM PLACE         | DUR2              | RUDOLPH GORDON     | RUDOLPH GORDON       | HILLCREST          |
| BRIAR OAKS                | SAV1              | RUDOLPH GORDON     | RUDOLPH GORDON       | HILLCREST          |
| CAMPBELL HEIGHTS          | RRW1              | FOUNTAIN INN       | BRYSON               | HILLCREST          |
| CAROLINA OAKS             | BDC1              | RUDOLPH GORDON     | RUDOLPH GORDON       | HILLCREST          |
| CAROLINA SPRINGS PH. I    | BDC1              | RUDOLPH GORDON     | RUDOLPH GORDON       | HILLCREST          |
| CAROLINA SPRINGS PH. II   | LPD1              | RUDOLPH GORDON     | RUDOLPH GORDON       | HILLCREST          |
| CATALINA ESTATES          | HHJ1              | RUDOLPH GORDON     | RUDOLPH GORDON       | HILLCREST          |
| CEDAR FORKS ESTATES MHP   | DUR2              | RUDOLPH GORDON     | RUDOLPH GORDON       | HILLCREST          |
| CLARK MANOR               | LPD1              | RUDOLPH GORDON     | RUDOLPH GORDON       | HILLCREST          |
| CLEAR SPRINGS             | CSR1              | RUDOLPH GORDON     | RUDOLPH GORDON       | HILLCREST          |
| COACHMAN ACRES            | STD1              | RUDOLPH GORDON     | RUDOLPH GORDON       | HILLCREST          |
| COACHMAN FOREST           | STD1              | RUDOLPH GORDON     | RUDOLPH GORDON       | HILLCREST          |
| COACHMAN PLANTATION       | STD1              | RUDOLPH GORDON     | RUDOLPH GORDON       | HILLCREST          |
| COOPER BRIDGE PLACE MHP   | LAC1              | RUDOLPH GORDON     | RUDOLPH GORDON       | HILLCREST          |
| COOPER RIDGE              | WTM1              | RUDOLPH GORDON     | RUDOLPH GORDON       | HILLCREST          |
| COUNTRY CHASE             | RRW1              | FOUNTAIN INN       | BRYSON               | HILLCREST          |
| COUNTRY GARDENS           | CTG1              | BRYSON             | BRYSON               | HILLCREST          |
| CREEKWOOD                 | JWV3              | RUDOLPH GORDON     | RUDOLPH GORDON       | MAULDIN            |
| DAWN CREEK                | HAC1              | FOUNTAIN INN       | BRYSON               | HILLCREST          |
| DURBIN CREEK FARMS        | WLC1              | FOUNTAIN INN       | BRYSON               | HILLCREST          |
| DURBIN CREEK MEADOWS      | WLC1              | FOUNTAIN INN       | BRYSON               | HILLCREST          |
| DURBIN PLACE MHP          | DUR2              | RUDOLPH GORDON     | RUDOLPH GORDON       | HILLCREST          |
| ENOREE POINT              | ENR1              | RUDOLPH GORDON     | RUDOLPH GORDON       | MAULDIN            |
| ENOREE RIDGE              | ENR2              | RUDOLPH GORDON     | RUDOLPH GORDON       | MAULDIN            |
| FIELDING ACRES            | SCU1              | RUDOLPH GORDON     | RUDOLPH GORDON       | HILLCREST          |
| FOOTHILLS AERODROME       | STD1              | RUDOLPH GORDON     | RUDOLPH GORDON       | HILLCREST          |
| FORREST CREEK             | GAT1              | FOUNTAIN INN       | BRYSON               | HILLCREST          |
| FOUNTAINBROOK             | HVR1              | FOUNTAIN INN       | BRYSON               | HILLCREST          |
| FOWLER TR PK              | LNB1              | FOUNTAIN INN       | BRYSON               | HILLCREST          |
| FOX CREEK MHP             | SFH1              | FOUNTAIN INN       | BRYSON               | HILLCREST          |
| GARRETT RIDGE             | WES1              | FOUNTAIN INN       | BRYSON               | HILLCREST          |
| GARRETT SPRINGS           | GAT1              | FOUNTAIN INN       | BRYSON               | HILLCREST          |
| GREEN ACRES MHP           | DUR2              | RUDOLPH GORDON     | RUDOLPH GORDON       | HILLCREST          |
| GREEN CREEK               | JWV2              | RUDOLPH GORDON     | RUDOLPH GORDON       | MAULDIN            |
| GREEN MEADOWS             | RCR1              | FOUNTAIN INN       | BRYSON               | HILLCREST          |
| GULLIVER OAKS             | HAC1              | FOUNTAIN INN       | BRYSON               | HILLCREST          |
| HARMONY CIRCLE            | WOV1              | FOUNTAIN INN       | BRYSON               | HILLCREST          |
| HAWTHORNE HILLS           | HVR1              | FOUNTAIN INN       | BRYSON               | HILLCREST          |
| HAWTHORNE RIDGE           | ENR1              | RUDOLPH GORDON     | RUDOLPH GORDON       | MAULDIN            |
| HERITAGE ESTATES          | HHJ1              | RUDOLPH GORDON     | RUDOLPH GORDON       | HILLCREST          |
| HILLCREST SUBDIVISION     | ENR1              | RUDOLPH GORDON     | RUDOLPH GORDON       | MAULDIN            |
| JONES MILL CROSSING       | HHJ1              | RUDOLPH GORDON     | RUDOLPH GORDON       | HILLCREST          |
| JONES MILL ESTATES        | HHJ1              | RUDOLPH GORDON     | RUDOLPH GORDON       | HILLCREST          |
| JORDANS POND              | CLV2              | RUDOLPH GORDON     | RUDOLPH GORDON       | HILLCREST          |
| KELSEY GLEN               | LVR1              | RUDOLPH GORDON     | RUDOLPH GORDON       | HILLCREST          |
| KILGORE POINTE            | JWV1              | RUDOLPH GORDON     | RUDOLPH GORDON       | MAULDIN            |
| LEGACY FARM               | GRN1              | FOUNTAIN INN       | BRYSON               | HILLCREST          |
| LOCKELAND PARK            | ENR2              | RUDOLPH GORDON     | RUDOLPH GORDON       | MAULDIN            |
| LONESOME DOVE ESTATES     | SMS1              | FOUNTAIN INN       | BRYSON               | HILLCREST          |
| LONESOME PINE-MHP         | LAC1              | RUDOLPH GORDON     | RUDOLPH GORDON       | HILLCREST          |
| LOVES ANCHOR              | HAC1              | FOUNTAIN INN       | BRYSON               | HILLCREST          |
| MCKELVEY SUBDIVISION      | WES1              | FOUNTAIN INN       | BRYSON               | HILLCREST          |
| OAK TREE TERRACE          | LNB1              | FOUNTAIN INN       | BRYSON               | HILLCREST          |
| PARK ACRES MHP            | DUR1              | RUDOLPH GORDON     | RUDOLPH GORDON       | HILLCREST          |
| PARKS GROVE               | WES1              | FOUNTAIN INN       | BRYSON               | HILLCREST          |

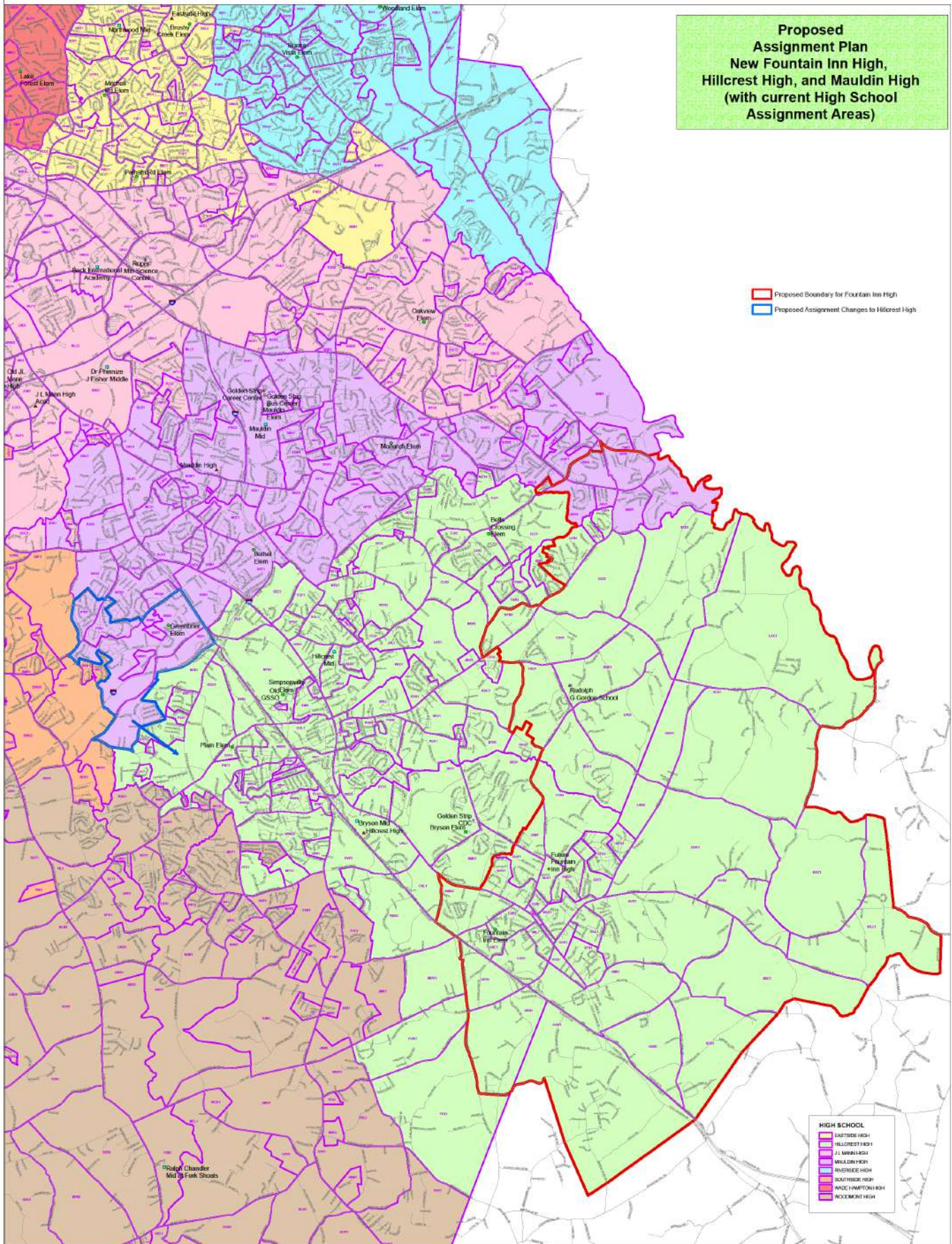
| <b><u>Subdivision</u></b>      | <b><u>GEO</u></b> | <b><u>ELEM</u></b> | <b><u>MIDDLE</u></b> | <b><u>HIGH</u></b> |
|--------------------------------|-------------------|--------------------|----------------------|--------------------|
| PINE RIDGE PLACE               | OFR1              | FOUNTAIN INN       | BRYSON               | HILLCREST          |
| QUAIL OAK TR PK                | HAC1              | FOUNTAIN INN       | BRYSON               | HILLCREST          |
| QUAIL RUN                      | WOV1              | FOUNTAIN INN       | BRYSON               | HILLCREST          |
| RENWOOD                        | ENR1              | RUDOLPH GORDON     | RUDOLPH GORDON       | MAULDIN            |
| RIDGECREST TR PK               | HAR1              | FOUNTAIN INN       | BRYSON               | HILLCREST          |
| ROCKBRIDGE COVE                | BDC1              | RUDOLPH GORDON     | RUDOLPH GORDON       | HILLCREST          |
| SATTERFIELD POINTE             | SGD1              | RUDOLPH GORDON     | RUDOLPH GORDON       | HILLCREST          |
| SAVANNAH                       | SAV1              | RUDOLPH GORDON     | RUDOLPH GORDON       | HILLCREST          |
| SAVANNAH POINTE                | ENR2              | RUDOLPH GORDON     | RUDOLPH GORDON       | MAULDIN            |
| SAVANNAH POINTE, THE COVE @    | ENR2              | RUDOLPH GORDON     | RUDOLPH GORDON       | MAULDIN            |
| SAVANNAH POINTE, THE LANDING @ | ENR2              | RUDOLPH GORDON     | RUDOLPH GORDON       | MAULDIN            |
| SHELLBROOK PLANTATION          | LVC1              | RUDOLPH GORDON     | RUDOLPH GORDON       | HILLCREST          |
| SLEEPY HOLLOW MHP              | DUR2              | RUDOLPH GORDON     | RUDOLPH GORDON       | HILLCREST          |
| THOMPSON TR PK                 | HAR1              | FOUNTAIN INN       | BRYSON               | HILLCREST          |
| TILLBROOK                      | AAW1              | FOUNTAIN INN       | BRYSON               | HILLCREST          |
| TIMBER RIDGE                   | AAW1              | FOUNTAIN INN       | BRYSON               | HILLCREST          |
| TIMBERLAND TRAIL               | BDC1              | RUDOLPH GORDON     | RUDOLPH GORDON       | HILLCREST          |
| TRAILSIDE AT GARRETT           | GAT1              | FOUNTAIN INN       | BRYSON               | HILLCREST          |
| TUCKER BRANCH                  | SFH1              | FOUNTAIN INN       | BRYSON               | HILLCREST          |
| TWIN CREEKS                    | JWV2              | RUDOLPH GORDON     | RUDOLPH GORDON       | MAULDIN            |
| VILLAGE @ FOUNTAIN INN, THE    | WOV1              | FOUNTAIN INN       | BRYSON               | HILLCREST          |
| VILLAGE @ WINDSOR CREEK        | JWV1              | RUDOLPH GORDON     | RUDOLPH GORDON       | MAULDIN            |
| WALNUT CREST MHP               | WTA1              | BRYSON             | BRYSON               | HILLCREST          |
| WALNUT RIDGE                   | LVR1              | RUDOLPH GORDON     | RUDOLPH GORDON       | HILLCREST          |
| WEST FOUNTAIN INN FARMS        | AAW1              | FOUNTAIN INN       | BRYSON               | HILLCREST          |
| WHITE MEADOW                   | WTM1              | RUDOLPH GORDON     | RUDOLPH GORDON       | HILLCREST          |
| WHITEHALL PLANTATION           | WHP1              | RUDOLPH GORDON     | RUDOLPH GORDON       | MAULDIN            |
| WINDSOR CREEK                  | JWV2              | RUDOLPH GORDON     | RUDOLPH GORDON       | MAULDIN            |
| WOODLAND CHASE                 | JRD1              | RUDOLPH GORDON     | RUDOLPH GORDON       | HILLCREST          |
| WOODSIDE VILLAGE               | CAR1              | FOUNTAIN INN       | BRYSON               | HILLCREST          |
| <b>MULTIFAMILY</b>             | <b>GEO</b>        | <b>ELEM</b>        | <b>MIDDLE</b>        | <b>HIGH</b>        |
| ARMSTRONG APTS.                | CAR1              | FOUNTAIN INN       | BRYSON               | HILLCREST          |
| BENTWOOD                       | LNB1              | FOUNTAIN INN       | BRYSON               | HILLCREST          |
| FAIRVIEW APTS.                 | LNB1              | FOUNTAIN INN       | BRYSON               | HILLCREST          |
| FOUNTAIN ARMS APTS.            | CAR1              | FOUNTAIN INN       | BRYSON               | HILLCREST          |
| FOUNTAIN HILLS                 | SFH1              | FOUNTAIN INN       | BRYSON               | HILLCREST          |
| OAKTREE                        | LNB1              | FOUNTAIN INN       | BRYSON               | HILLCREST          |
| PALISADES OF FOUNTAIN INN      | CAR1              | FOUNTAIN INN       | BRYSON               | HILLCREST          |
| SUNSET VILLAGE                 | CLW1              | FOUNTAIN INN       | BRYSON               | HILLCREST          |
| TOWNES AT FOUNTAIN INN         | WOV1              | FOUNTAIN INN       | BRYSON               | HILLCREST          |
| VALLEY VIEW APTS.              | NMS2              | FOUNTAIN INN       | BRYSON               | HILLCREST          |
| VALLEY VIEW TOWNES             | NMS2              | FOUNTAIN INN       | BRYSON               | HILLCREST          |
| WOODLOT APTS.                  | LNB1              | FOUNTAIN INN       | BRYSON               | HILLCREST          |
| WOODSIDE APTS.                 | MIL1              | FOUNTAIN INN       | BRYSON               | HILLCREST          |

Student Assignment Proposal  
Mauldin High to Hillcrest High  
Subdivisions and Multifamily

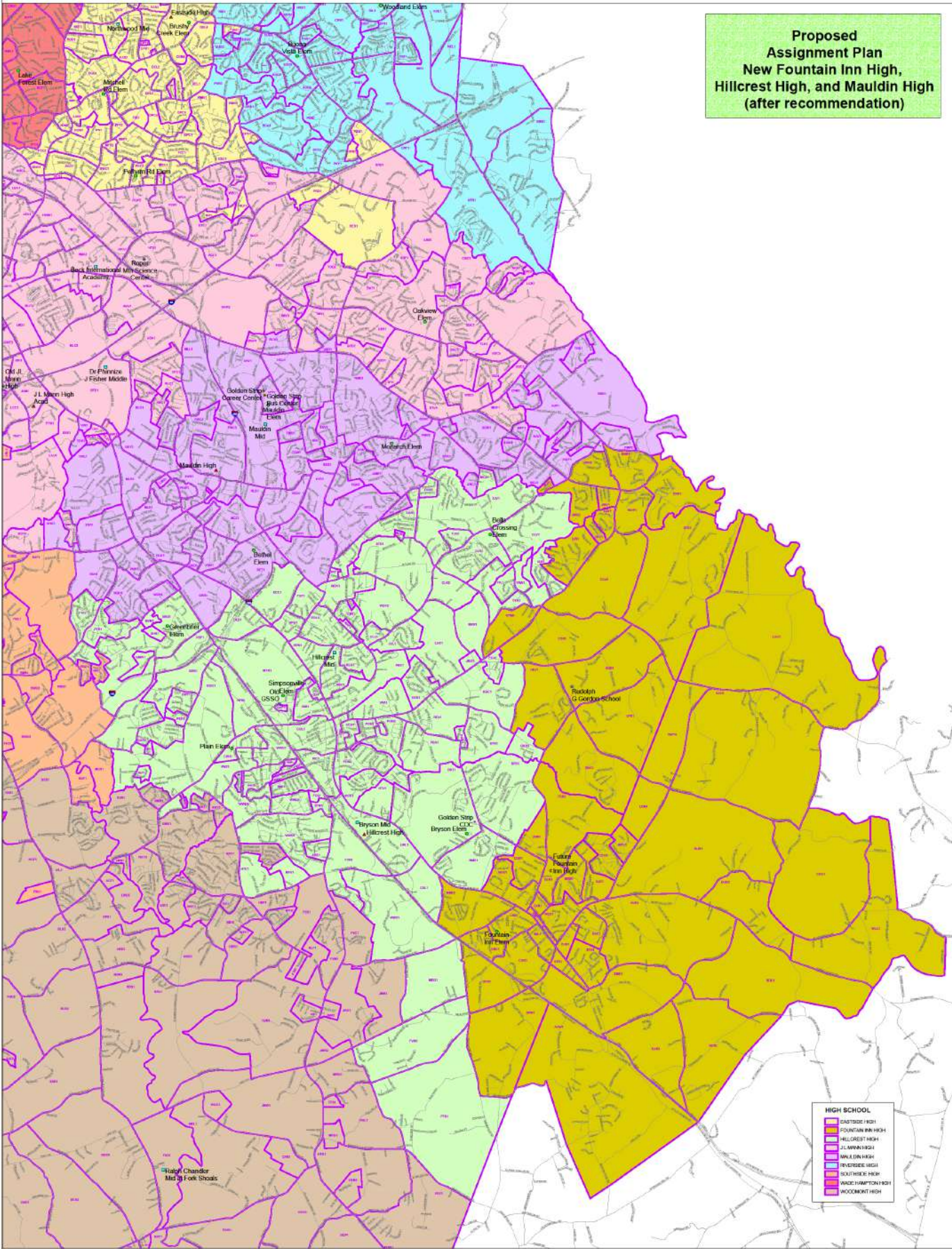
| <u><b>Subdivision</b></u>     | <u><b>GEO</b></u> | <u><b>ELEM</b></u> | <u><b>MIDDLE</b></u> | <u><b>HIGH</b></u> |
|-------------------------------|-------------------|--------------------|----------------------|--------------------|
| FALCON RIDGE                  | BRS1              | GREENBRIER         | HILLCREST            | MAULDIN            |
| GILLIN PLACE                  | BRS1              | GREENBRIER         | HILLCREST            | MAULDIN            |
| MAPLE GROVE                   | BRS1              | GREENBRIER         | HILLCREST            | MAULDIN            |
| PLANTER'S ROW - AUTUMN RIDGE  | BRS1              | GREENBRIER         | HILLCREST            | MAULDIN            |
| SHOALLY RIDGE                 | BRS1              | GREENBRIER         | HILLCREST            | MAULDIN            |
| ADAMS MANOR                   | PTR2              | GREENBRIER         | HILLCREST            | MAULDIN            |
| PLANTER'S ROW - GROVE         | PTR2              | GREENBRIER         | HILLCREST            | MAULDIN            |
| PLANTER'S ROW - VINEYARD      | PTR2              | GREENBRIER         | HILLCREST            | MAULDIN            |
| GREENBRIAR MEADOWS            | GMW1              | GREENBRIER         | HILLCREST            | MAULDIN            |
| GRIFFIN ROAD SUBDIVISION      | PBF1              | GREENBRIER         | HILLCREST            | MAULDIN            |
| PINEBROOK FOREST              | PBF1              | GREENBRIER         | HILLCREST            | MAULDIN            |
| SHILOH ESTATES                | PBF1              | GREENBRIER         | HILLCREST            | MAULDIN            |
| TANIERE RIDGE                 | PBF1              | GREENBRIER         | HILLCREST            | MAULDIN            |
| COTTAGES @ SHOALLY RIDGE, THE | SHR1              | GREENBRIER         | HILLCREST            | MAULDIN            |
| BROOKSIDE                     | PTR1              | GREENBRIER         | HILLCREST            | MAULDIN            |
| PLANTER'S ROW - ORCHARD       | PTR1              | GREENBRIER         | HILLCREST            | MAULDIN            |
| PLANTER'S ROW - PRESERVE      | PTR1              | GREENBRIER         | HILLCREST            | MAULDIN            |
| <b>MULTIFAMILY</b>            | <b>GEO</b>        | <b>ELEM</b>        | <b>MIDDLE</b>        | <b>HIGH</b>        |
| NONE                          |                   |                    |                      |                    |

 Proposed Boundary for Fountain Inn High

 Proposed Assignment Changes to Hillcrest High



**Proposed  
Assignment Plan  
New Fountain Inn High,  
Hillcrest High, and Mauldin High  
(after recommendation)**



- HIGH SCHOOL**
- Eastside High
  - Fountain Inn High
  - Hillcrest High
  - Mauldin High
  - New Fountain Inn High
  - Woodmont High

# Student Assignment

## GLOSSARY OF TERMS

# Student Assignment

## GLOSSARY OF TERMS

### **School District**

All of Greenville County Schools.

### **School Attendance Area**

All of the geocodes that make up an individual schools' assignment boundary.

### **Strategic Plan**

The Board's priorities for performance.

### **Geocode**

A geographic area used to manage school assignment at the elementary, middle and high school level. Geocode numbers reflect actual numbers recorded in the district's database.

### **LRFP**

Long Range Facilities Plan (<https://www.greenville.k12.sc.us/Departments/docs/planning/cip1903.pdf>)

### **Factors**

Board Policy AD(P) lists the eleven factors to be considered.

### **FARMS**

The Free and Reduced Meals Program is available to students that apply and meet the requirement to receive meals in school at no charge or at a reduced charge.

### **Homebase**

School a student is assigned based on the student's resident address.

### **Test Data**

South Carolina and federal laws require end-of-the-year accountability tests for grades 3-8 that are based on state academic standards. South Carolina Palmetto Assessment of State Standards (SCPASS) results in Science in select grades include four scoring levels: Does Not Meet Expectations, Approaches Expectations, Meets Expectations, and Exceeds Expectations. SCPASS results in Social Studies in select grades include five scoring levels: Not Met 1, Not Met 2, Met, Exemplary 4, and Exemplary 5. SC READY results in English language arts and mathematics in grades 3-8 include four scoring levels: Does Not Meet Expectations, Approaches Expectations, Meets Expectations, and Exceeds Expectations. High school End-of-Course-Examination Program includes four subject areas (English 1, Algebra 1, Biology 1, and U.S. History and the Constitution) and five scoring levels: A, B, C, D, and F.

### **Rising**

The grade a student will be in for the upcoming school year. A current 4<sup>th</sup> grader is a rising 5<sup>th</sup> grader.

### **Change in Assignment School Choice (CIA)**

Students may request to attend a school other than their assigned home-based school and be placed in the CIA lottery. Next year's CIA School Choice lottery window is Monday, November 18, 2019 through Wednesday, December 4, 2019. Space must be available at requested school.

**Magnet Choice**

Magnet Schools that offer a program seeking to attract students (whether the student resides in the school's attendance area or not) with specialized academic disciplines. Applications are scored and students qualifying are ranked in a lottery. Space must be available at requested school.

**Island**

A geocode that is not contiguous (not connected) to a school's main attendance area.

**Feeder Pattern**

The flow of school assignment from elementary to middle to high school.

**15<sup>th</sup> Day Enrollment**

The number of actual students enrolled at an individual school on the 15<sup>th</sup> day of school.

**Core Capacity**

The Media Center, Cafeteria, Toilet Facilities, and circulation space of an educational plant.

**Program Capacity (PC)**

The maximum number of students that a school may serve (excluding portables) depending on offered programs for that particular school as computed based on current teacher staffing ratios.

**Expansion**

An existing school that receives construction updates to increase its capacity.

**Portable**

A free-standing classroom used to serve the students at an overcrowded school.

**# Lots to go (LTG)**

Based on subdivision notifications since 1995, the current number of lots still to be built out.