



PUBLIC SCHOOLS of
BROOKLINE

School Committee - December 8, 2022



Agenda



- Review 2021-2022 MCAS results
- Highlight areas of celebration and areas of challenge
- Outline next steps
- Questions

MCAS Test Administration 2019-2022

**2022 school year was the first full MCAS administration for grades 3-8 since 2019.
Grade 10 students in 2022 had not taken an MCAS test since 2019 (grade 7).**

Year	Grades 3-8	Grade 10
2019	Full test administration	Full test administration
2020	No tests administered	No tests administered
2021	Half-test administered	Full test administered
2022	Full test administered	Full test administered

2022 MCAS **Statewide** Summary Notes

The 2022 State MCAS showed mixed results compared with 2021 scores:

- Math scores increased
- English Language Arts (ELA) scores declined
- Science scores increased slightly

When state results are compared to pre-pandemic levels, there is loss in all subject areas.

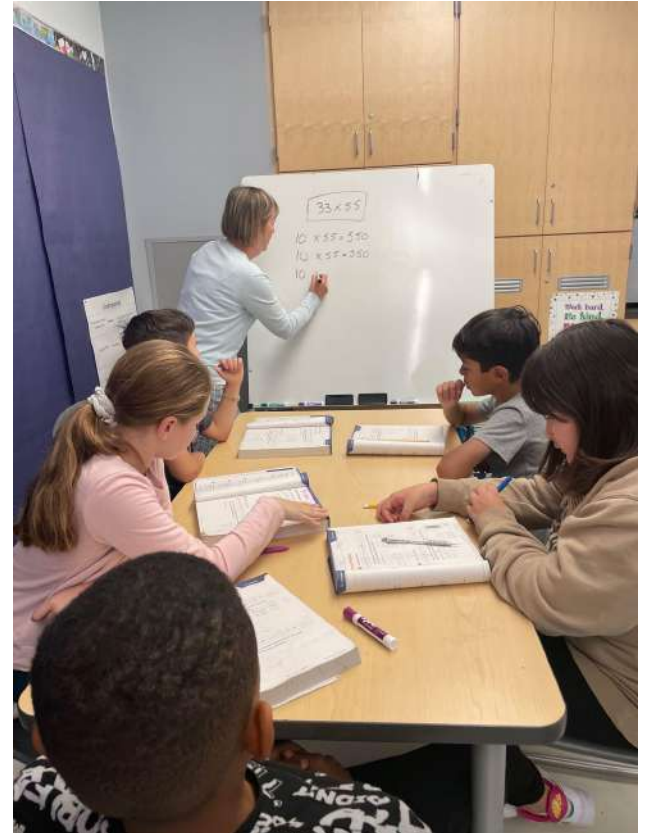
State identified to focus areas for improvement in ELA, specifically

- Impact of lower writing scores
- Early literacy challenges

Student absenteeism remains a challenge across the board for recovery efforts

Brookline Celebrations

- Our students did not demonstrate the same level of “learning loss” as the state
- Brookline’s overall performance in ELA, Math and Science remained similar to pre pandemic performance
- Brookline’s aggregate group outperformed the State
- Grade 7 showed increases in performance in both Math and ELA



Challenges

The gaps within Brookline's subgroups remains high

- Black and African American students in Brookline demonstrate a lower performance than their peers in the state
- The gap for Students with Disabilities has widened slightly in ELA since 2019

Attendance was a challenge for 2021-2022

- This did not impact our district determination this year, however if we do not improve, this will become relevant for the state determination going forward this year



English Language Arts (ELA) Results

2019-2022 Brookline 3-8 ELA MCAS All Students

% Proficient
71.1%

Compared to PY
-2%

Compared to State
30%

Avg SGP
62.8

Compared to PY
12

Compared to State
13

% Proficient
77.5%

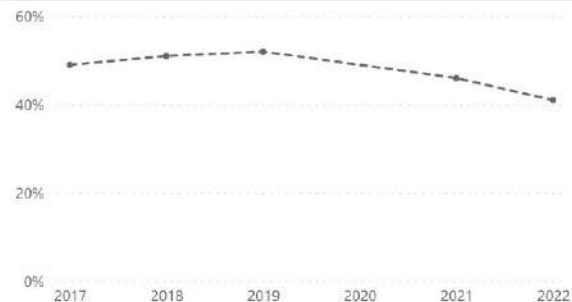
Compared to PY
1%

Compared to State
25%

Avg SGP
58.4

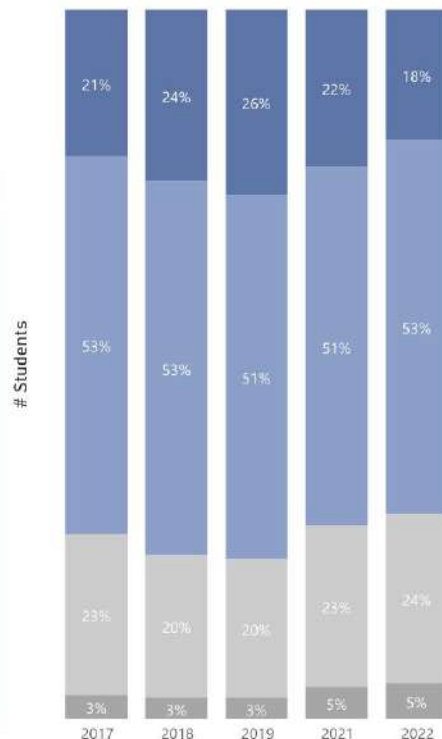
Compared to PY
-5

Compared to State
8

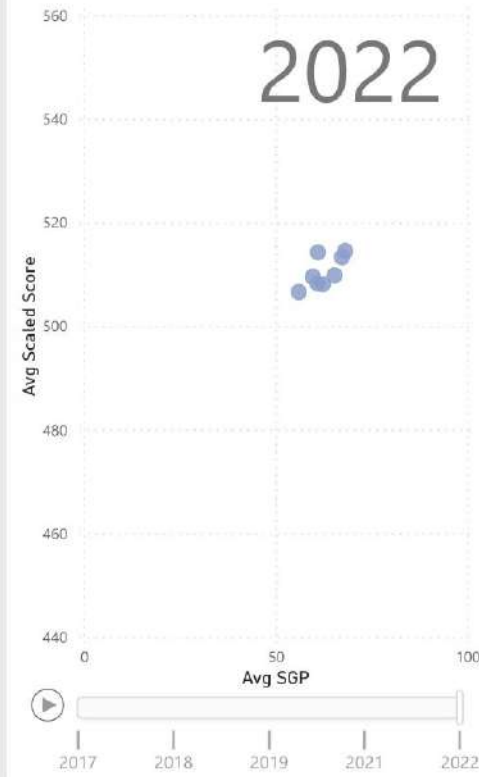


Student Performance by Year

● Not Meeti... ● Partially M... ● Meeting Ex... ● Exceedin...



Scaled Score & SGP by School



2019-2022 Brookline Grade 10 ELA MCAS All Students

% Proficient
82.3%

Compared to PY
-0%

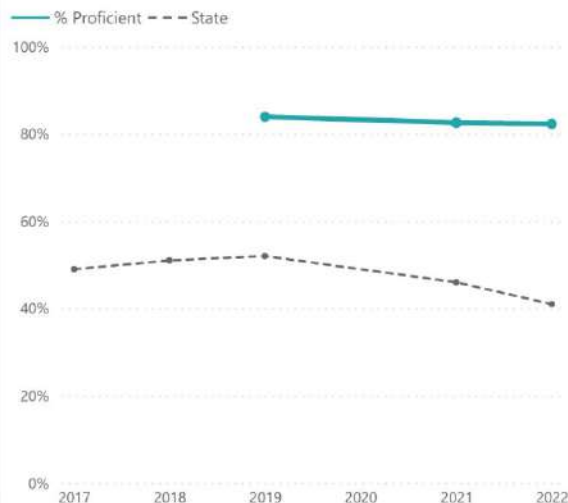
Compared to State
41%

Avg SGP
53.2

Compared to PY
8

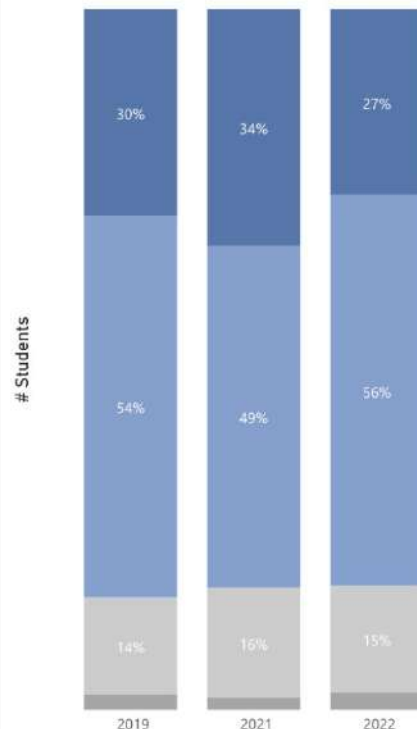
Compared to State
3

Results by Year for % Proficient

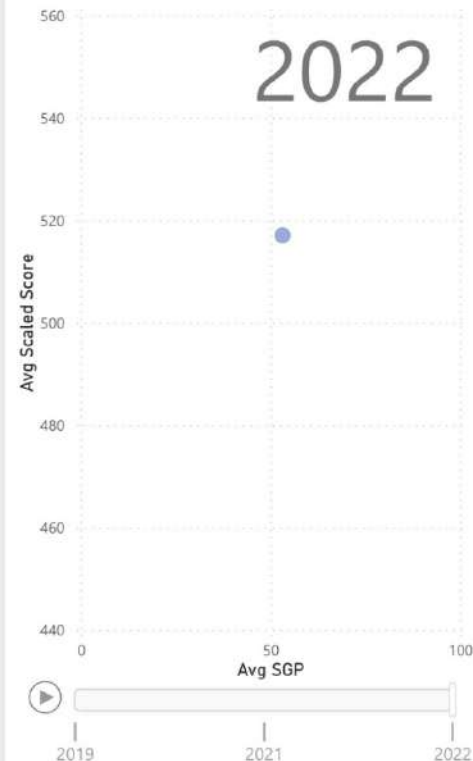


Student Performance by Year

● Not Meeti... ● Partially M... ● Meeting Ex... ● Exceedin...



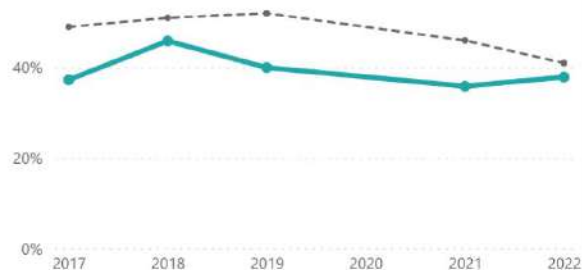
Scaled Score & SGP by School



2019-2022 PSB ELA MCAS Results by Race/Ethnicity

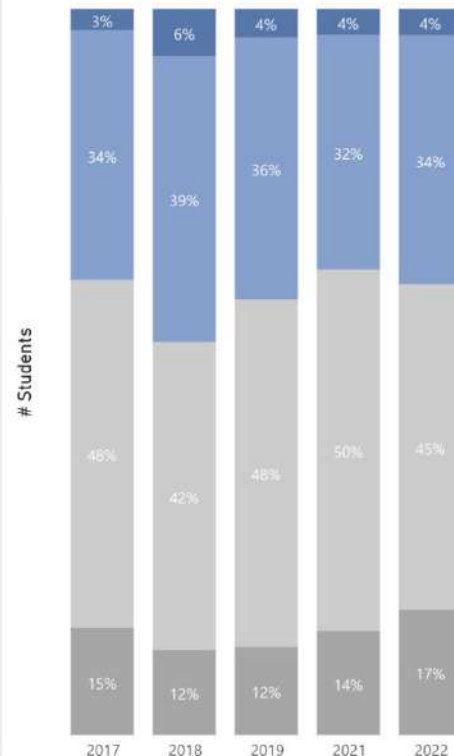
% Proficient	Compared to PY	Compared to State
37.9%	2%	-3%
Avg SGP	Compared to PY	Compared to State
55.6	17	6

% Proficient	Compared to PY	Compared to State
40.0%	-6%	-12%
Avg SGP	Compared to PY	Compared to State
46.5	-10	-3

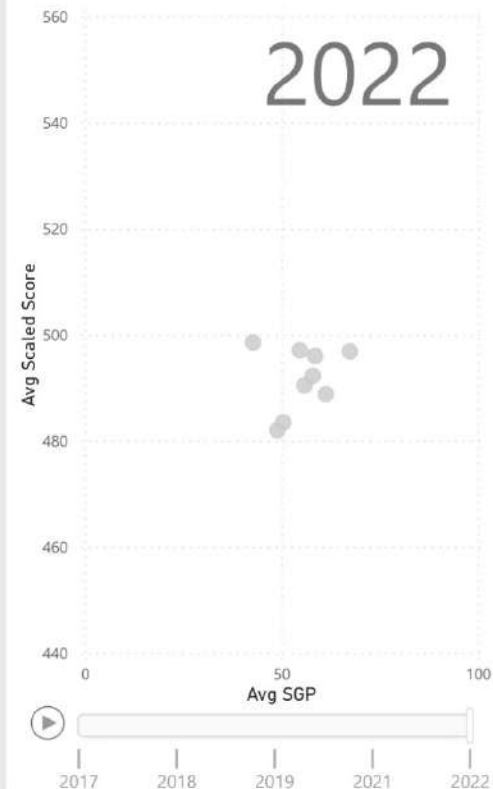


Student Performance by Year

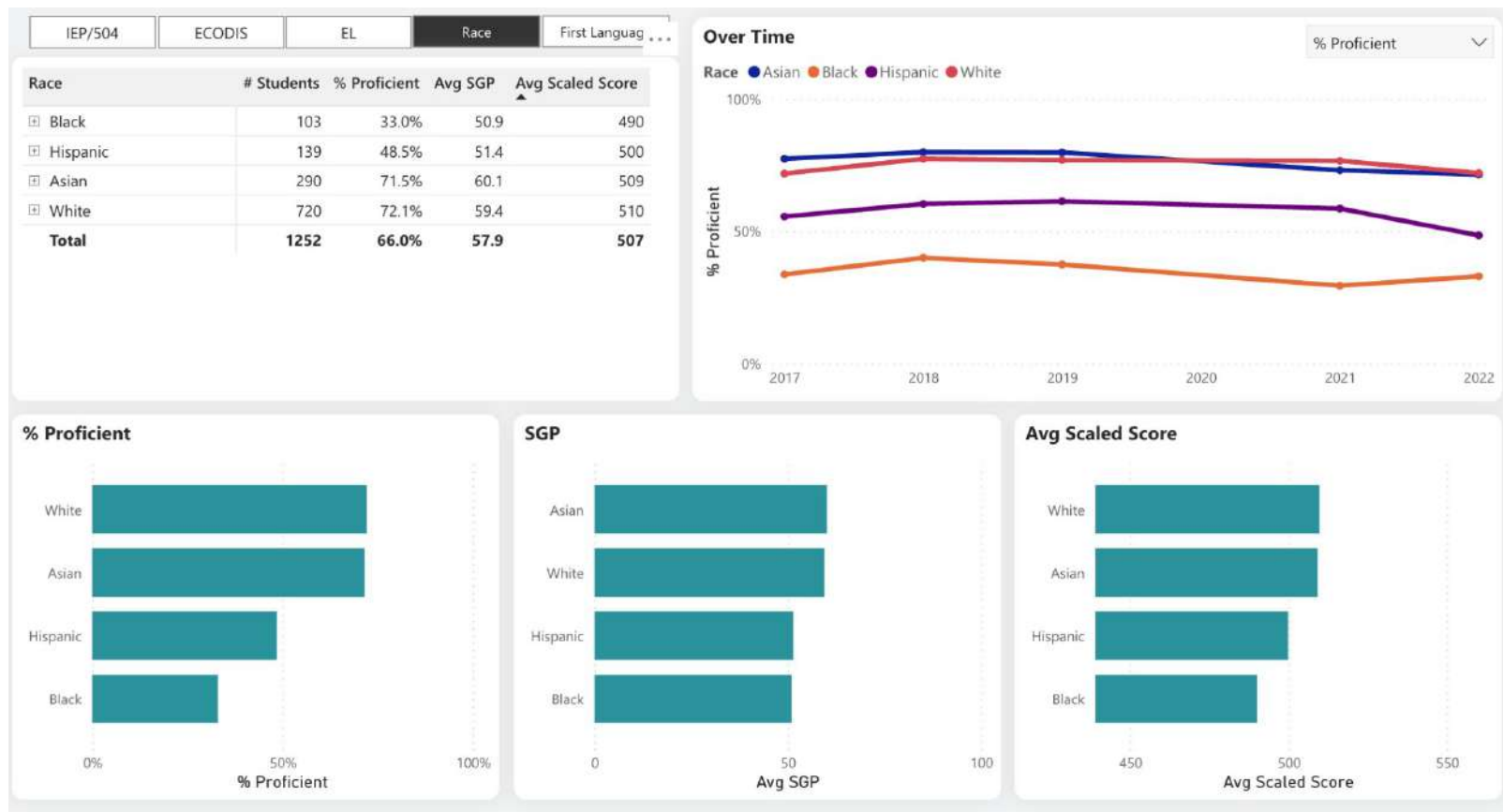
● Not Meeti... ● Partially M... ● Meeting Ex... ● Exceedin...



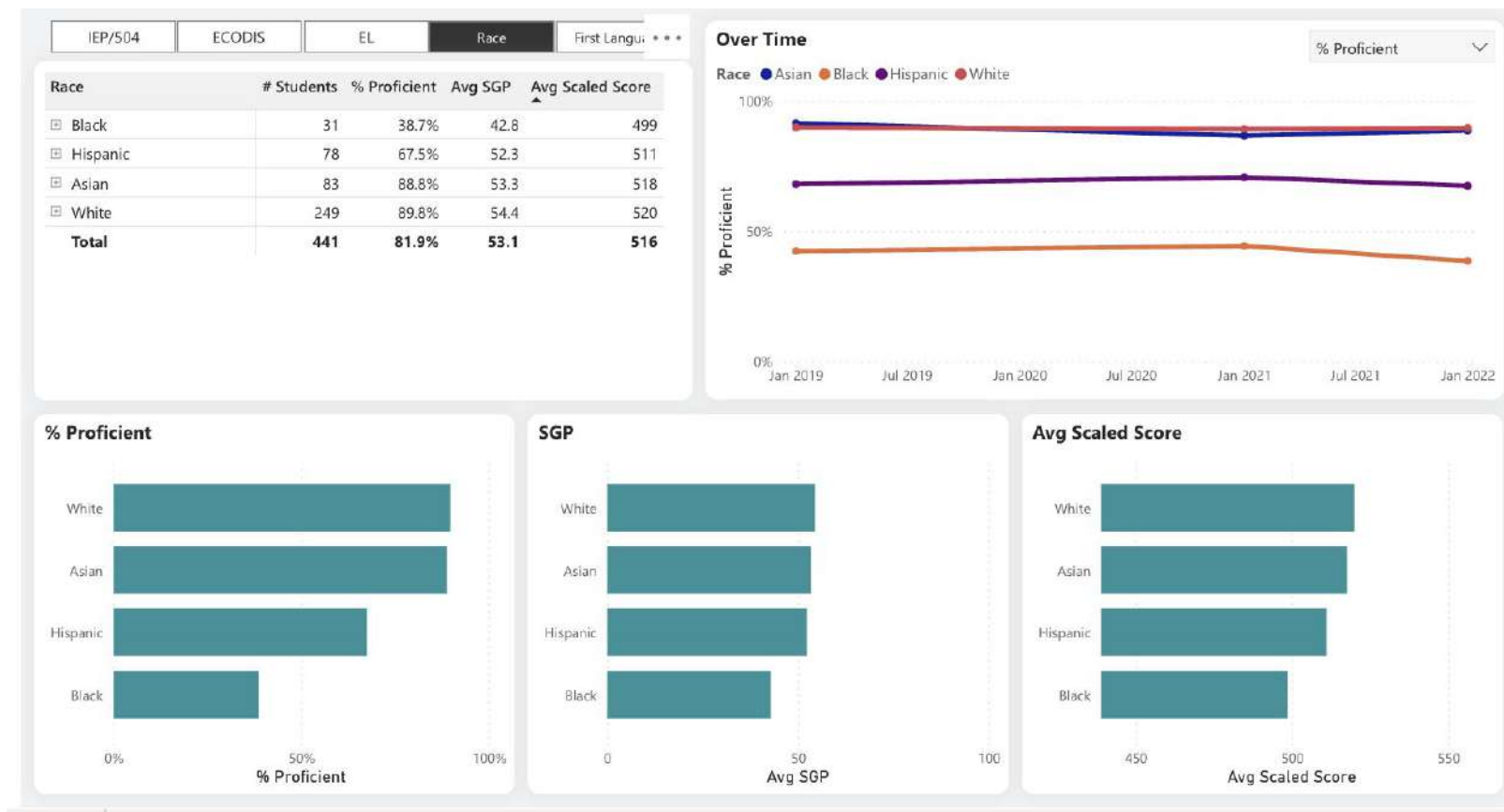
Scaled Score & SGP by School



2022 ELA MCAS Results by Race/Ethnicity, Grades 3-8



2022 ELA MCAS Results by Race/Ethnicity, Grade 10



Impact of lower writing scores on grades 3-8 ELA results

Each ELA test contains a required essay and the 2022 writing results declined significantly

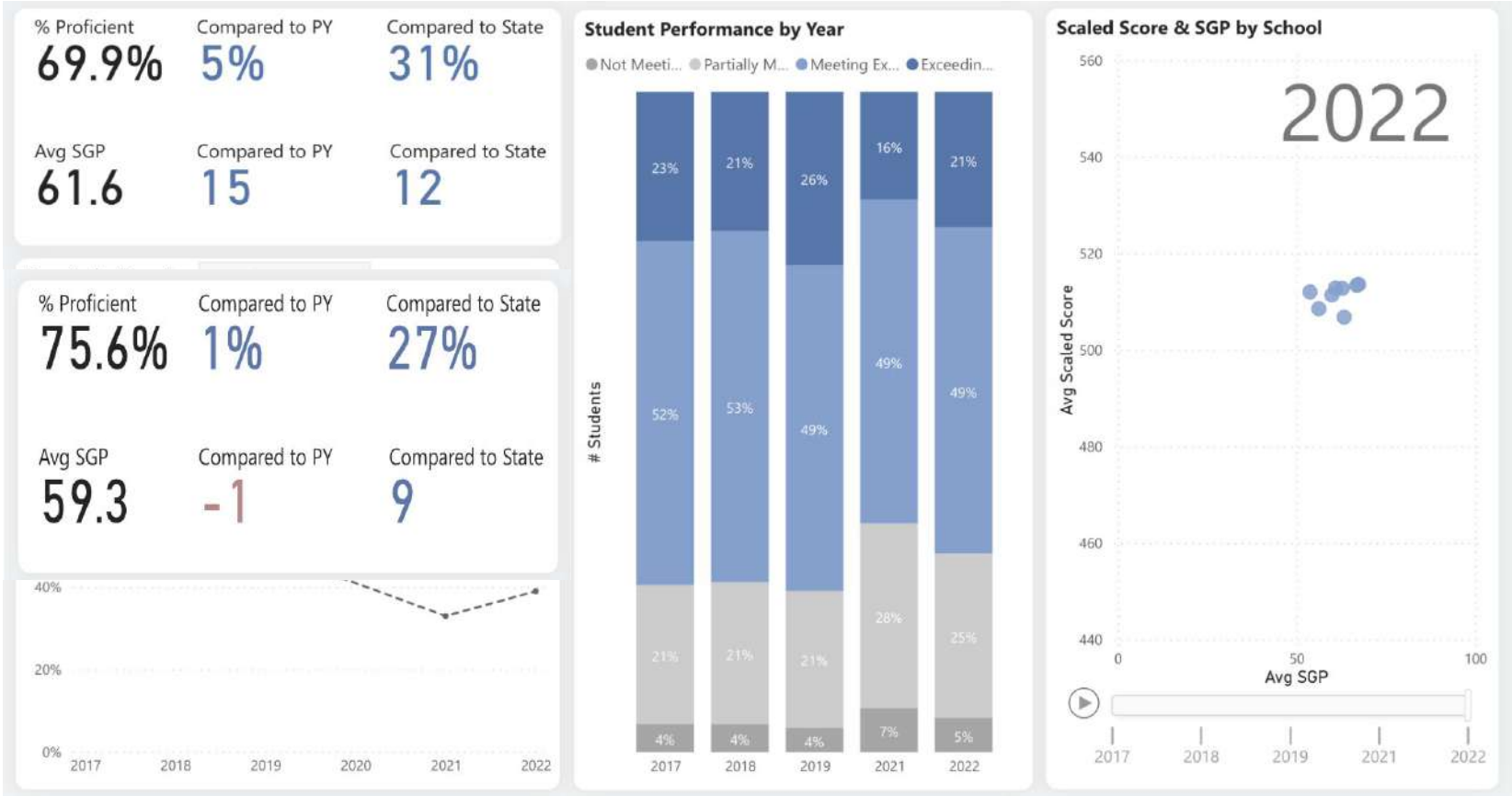
- The percentage of test takers receiving a score of 0 points increased from 19% in 2019 to 31% in 2022
- The average points scored per essay decreased in grades 3-8 with larger decreases in grades 3-5

Grade	2019 Average Points Earned	2022 Average Points Earned	Possible Points	Change 19-22
3-5	2.8	2.1	7	-25
6-8	3.8	3.3	8	-13



Math Results

2019-2022 Brookline 3-8 Math MCAS Results All Students



Student Performance by Year

● Not Meeti... ● Partially M... ● Meeting Ex... ● Exceedin...

23%

21%

26%

16%

21%

52%

53%

49%

49%

49%

21%

21%

21%

28%

25%

4%

4%

4%

7%

5%

2017

2018

2019

2021

2022

Scaled Score & SGP by School

2022

560

540

520

500

480

460

440

0

50

100

Avg Scaled Score

Avg SGP

2017

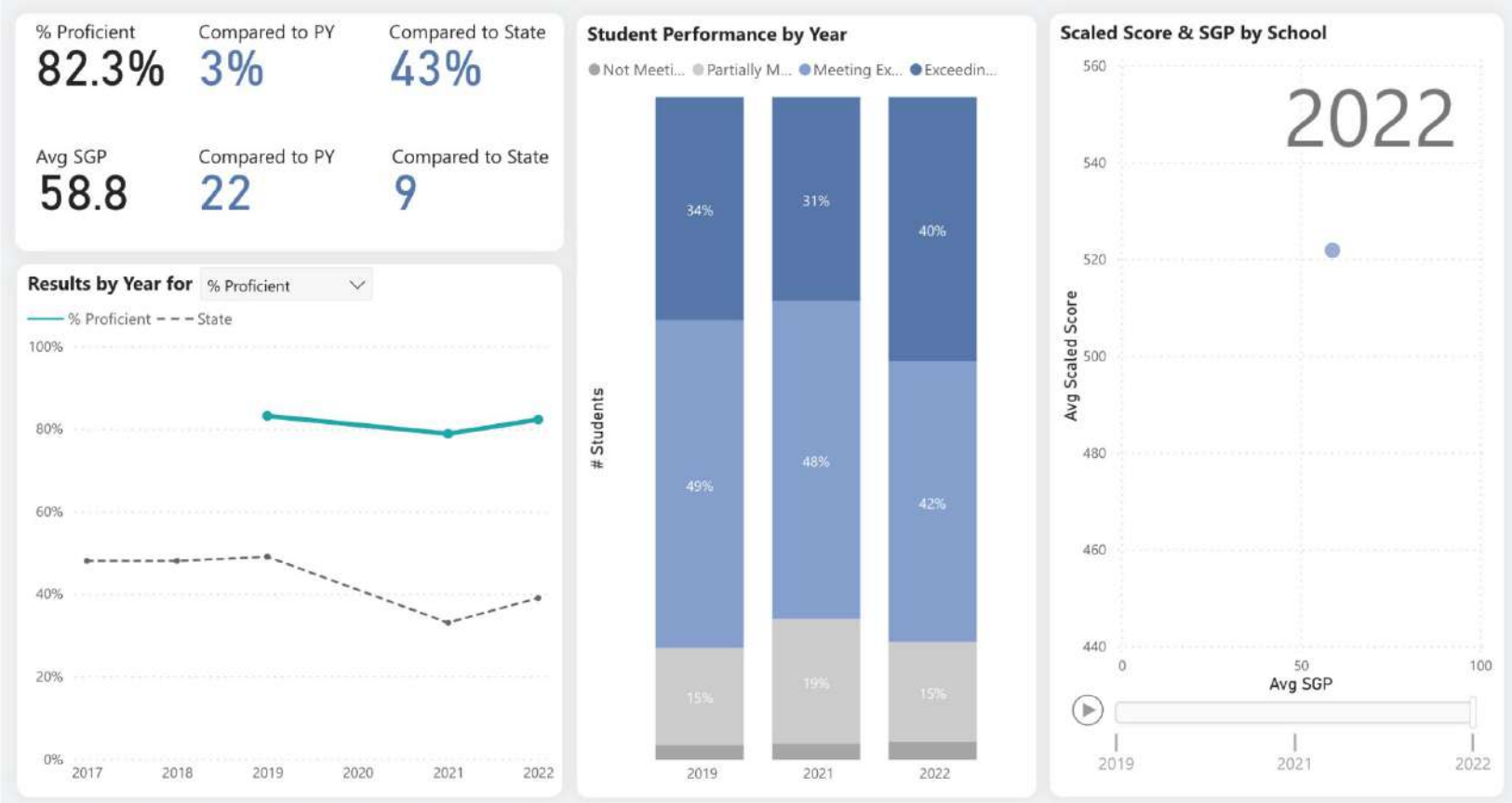
2018

2019

2021

2022

2019-2022 Brookline Grade 10 Math MCAS Results All Students



2019-2022 PSB MATH MCAS Results by Race/Ethnicity

% Proficient
31.3%

Compared to PY
11%

Compared to State
-8%

Avg SGP
55.0

Compared to PY
16

Compared to State
5

% Proficient
31.6%

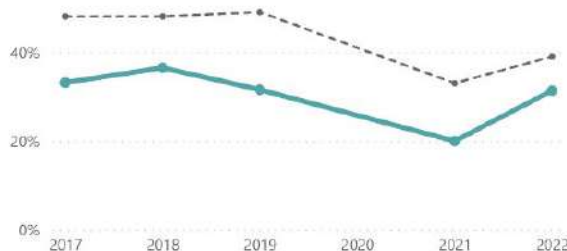
Compared to PY
-5%

Compared to State
-17%

Avg SGP
48.4

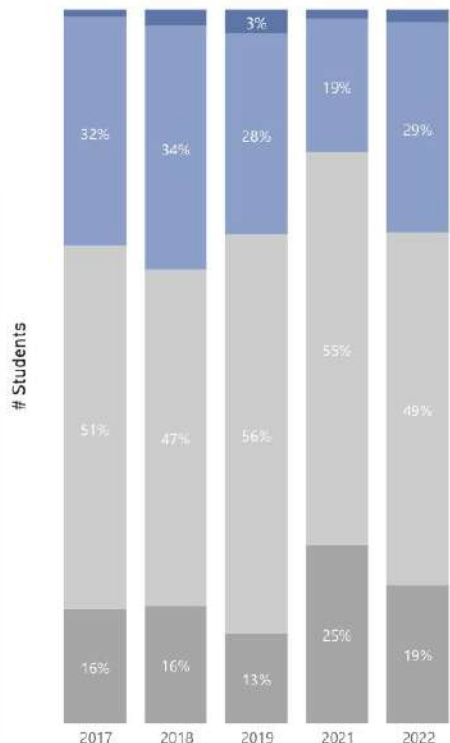
Compared to PY
-5

Compared to State
-2

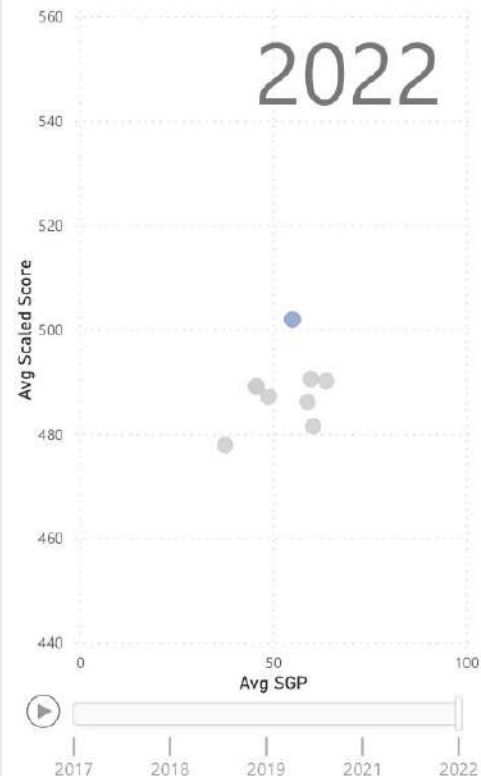


Student Performance by Year

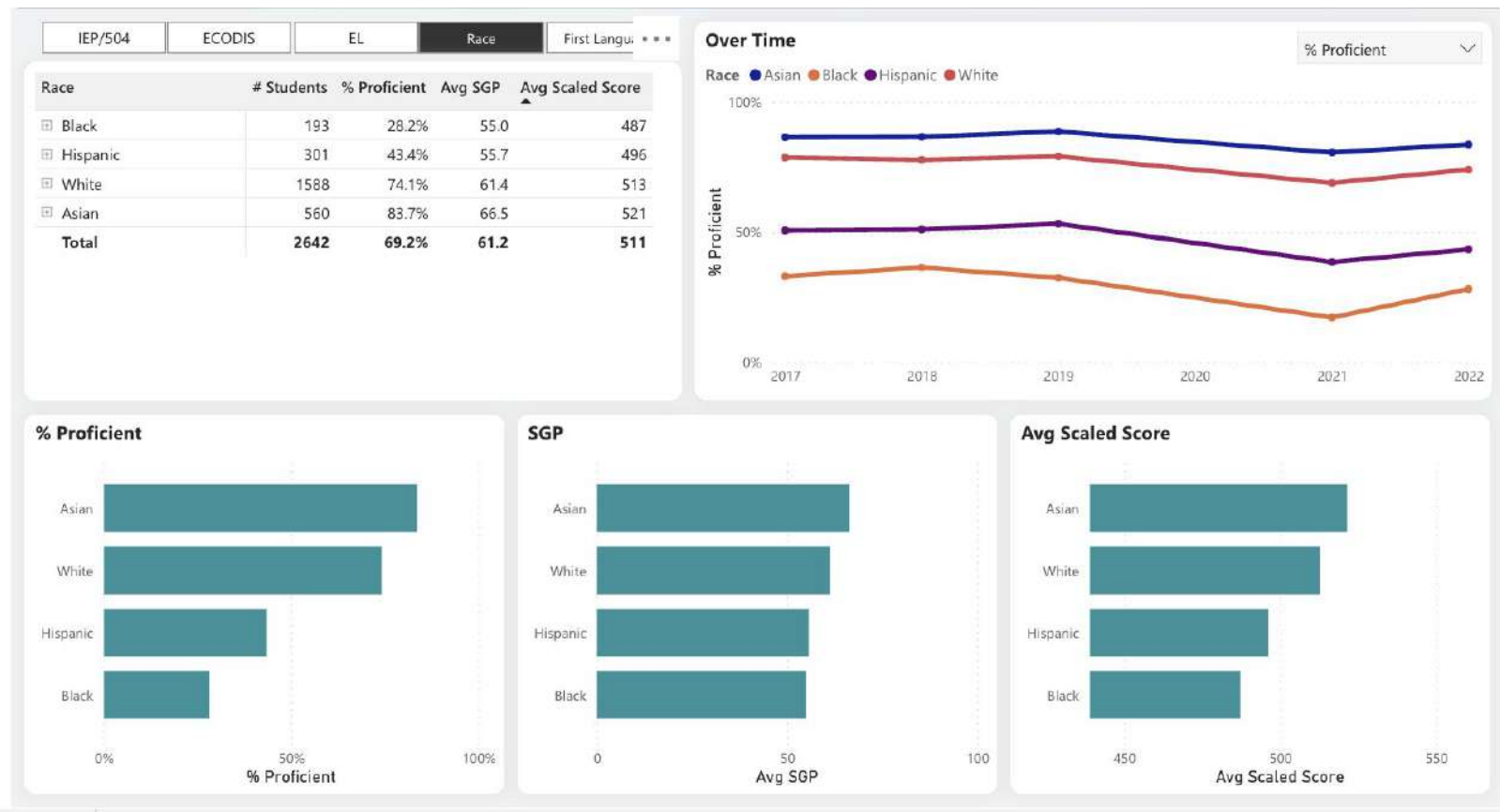
● Not Meeti... ● Partially M... ● Meeting Ex... ● Exceedin...



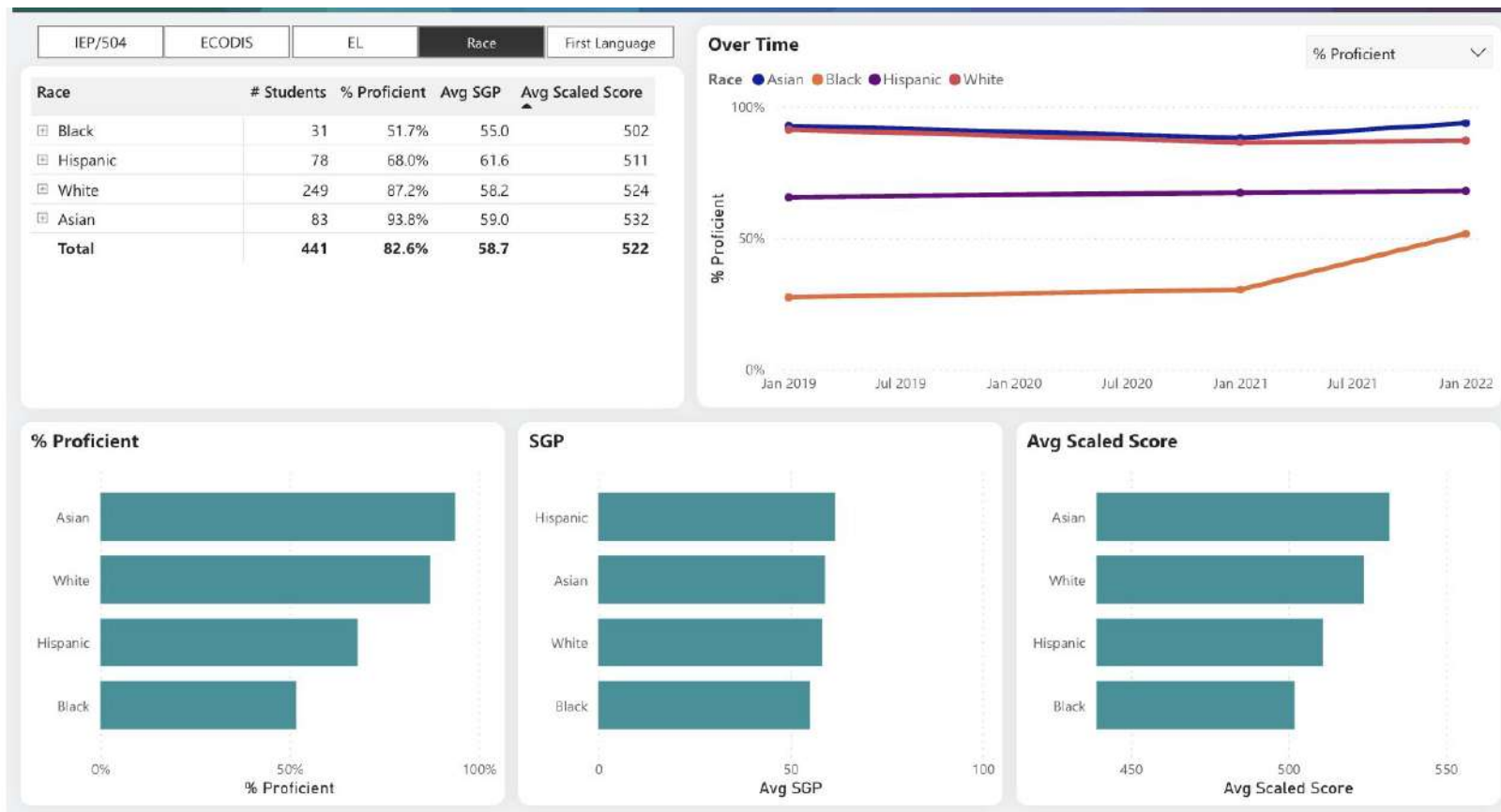
Scaled Score & SGP by School



2022 Math MCAS Results by Race/Ethnicity, Grades 3-8



2022 Math MCAS Results by Race/Ethnicity, Grades 10





Science Results

2019-2022 Science MCAS Grades 5 and 8

% Proficient
66.7%

Compared to PY
0%

Compared to State
25%

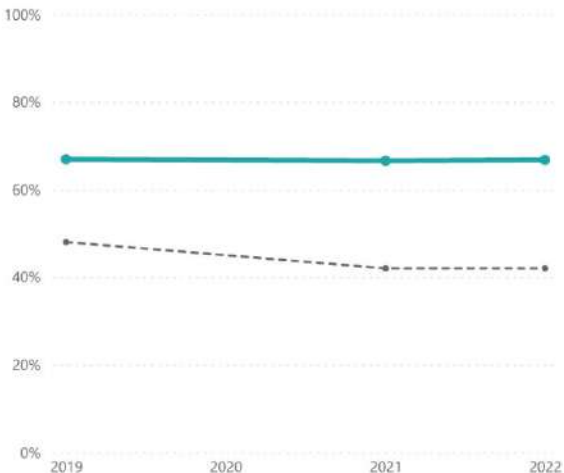
Avg SGP

Compared to PY

Compared to State

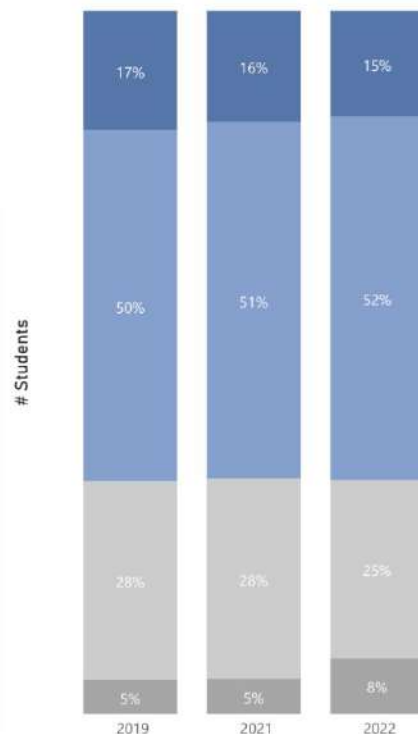
Results by Year for % Proficient

% Proficient

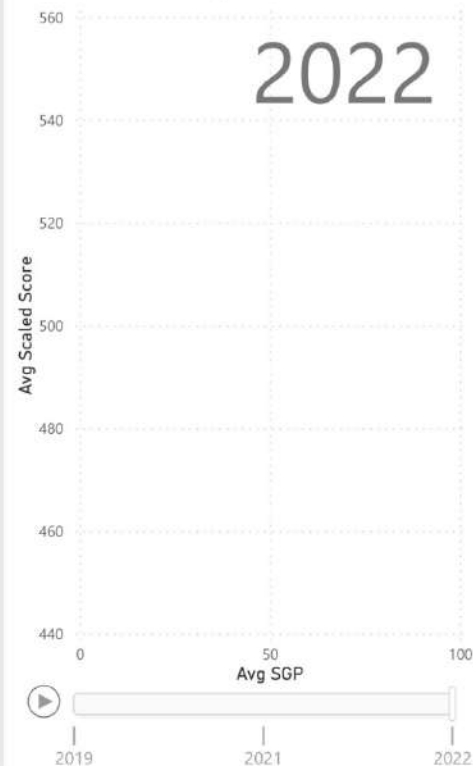


Student Performance by Year

● Not Meeti... ● Partially M... ● Meeting Ex... ● Exceedin...



Scaled Score & SGP by School



2019-2022 Science MCAS Grade 10

% Proficient
81.1%

Compared to PY
81%

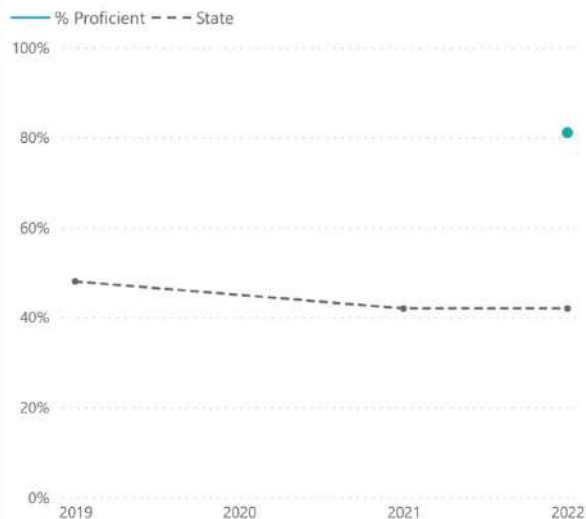
Compared to State
39%

Avg SGP
—

Compared to PY
—

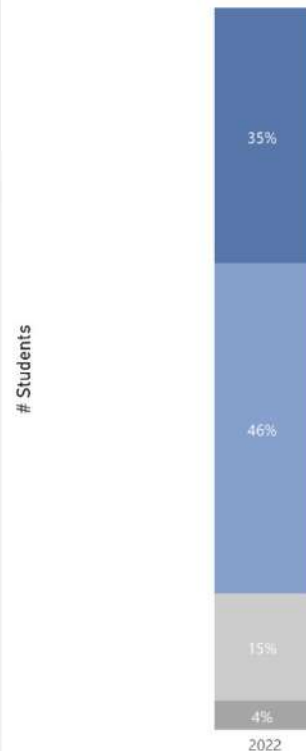
Compared to State
—

Results by Year for % Proficient

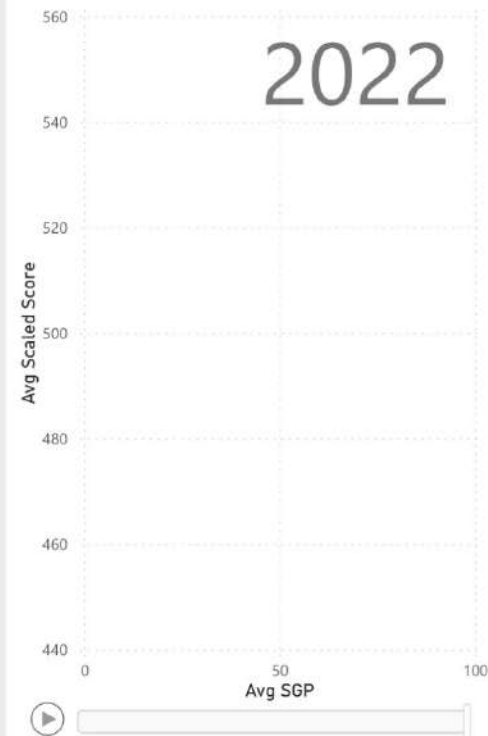


Student Performance by Year

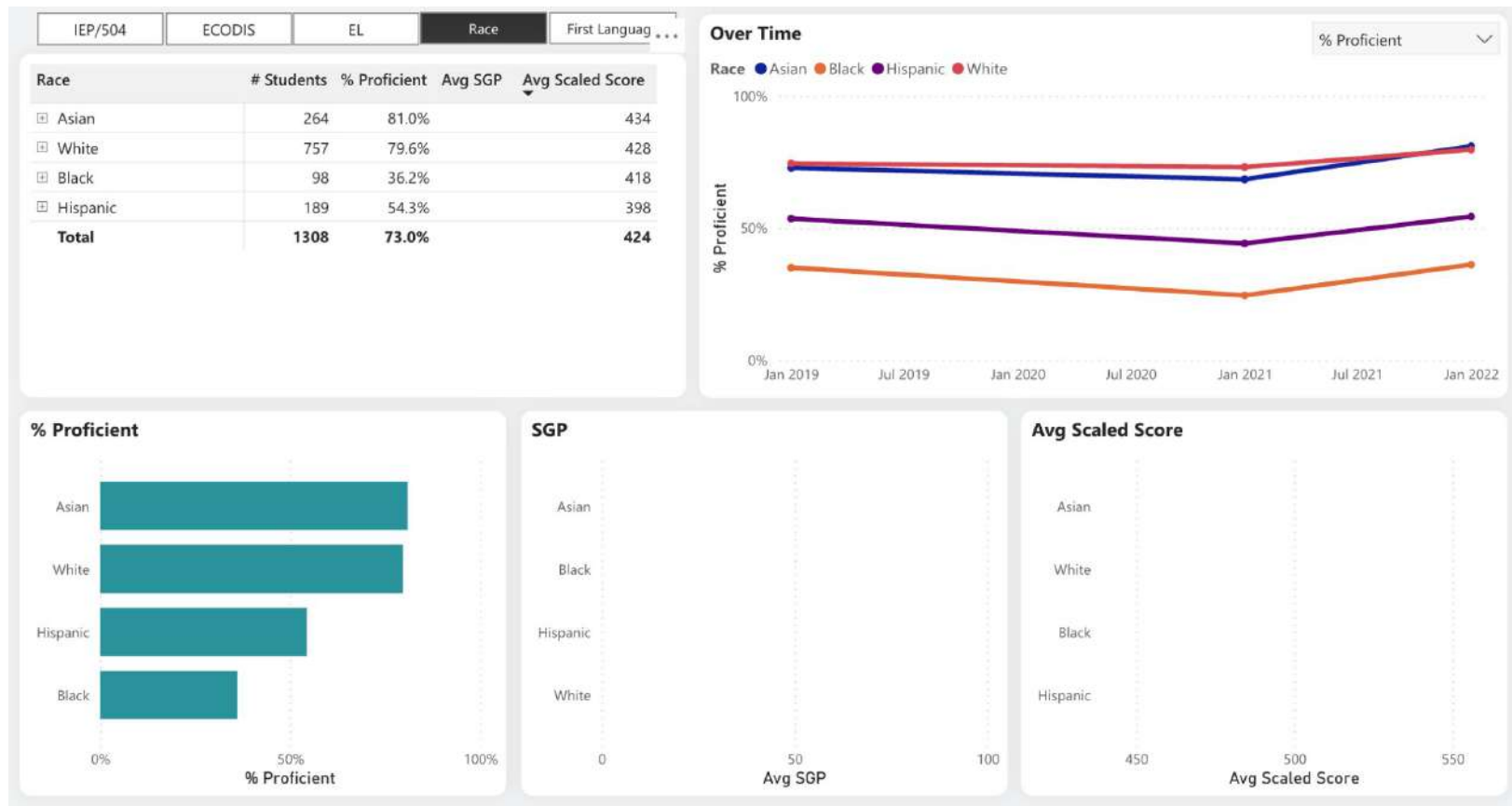
● Not Meeti... ● Partially M... ● Meeting Ex... ● Exceedin...



Scaled Score & SGP by School



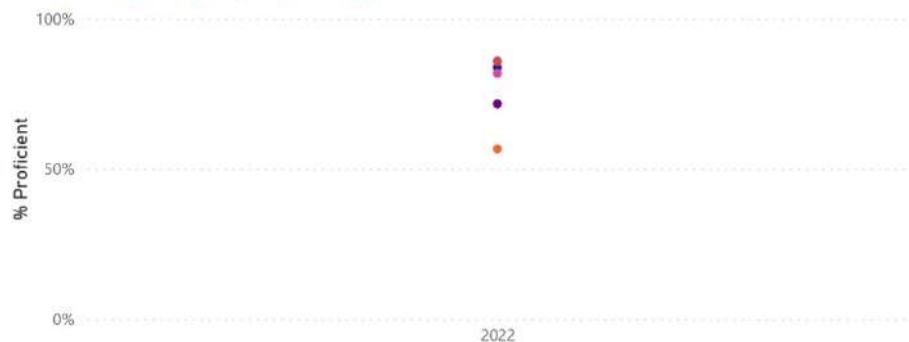
2022 Science MCAS Results by Race/Ethnicity, Grades 3-8



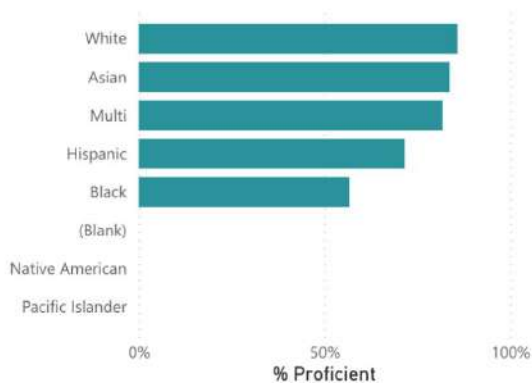
2022 Science MCAS Results by Race/Ethnicity, Grade 10

Race	# Students	% Proficient	Avg SGP	Avg Scaled Score
Black	31	56.7%		264
Asian	83	83.8%		260
Multi	56	81.8%		260
White	249	85.8%		257
Hispanic	78	71.6%		254
Total	497	81.1%		258

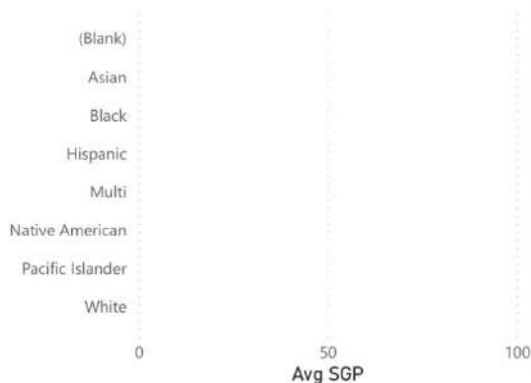
Race ● Asian ● Black ● Hispanic ● Multi ● White



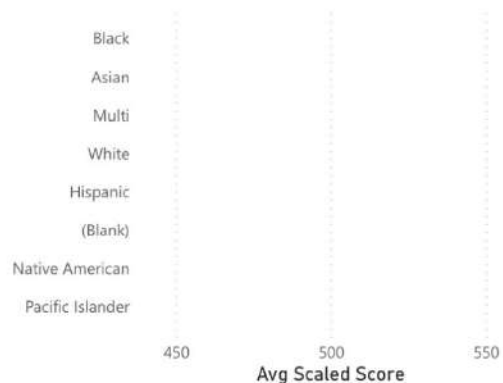
% Proficient



SGP



Avg Scaled Score





Attendance

DESE Reported Student Absenteeism

Student absenteeism across the state remains a challenge for recovery efforts.

Students have attended less school over past several years

- Average student missed 11 days in 2021 and 15 days in 2022
- 18% of all students missed 18+ days in 2021 and 28 missed 18+ days in 2022

Chronic absenteeism for students in grades 3-8 increased in 2022 by 138 (41K vs 98K students) as compared to 2019

1.7 million days of missed school because of positive COVID-19 cases in 2022

- Does not include staff absences or days missed as close contacts
- Note: 1 million+ other school days were saved as a result of the state testing program

Brookline Reported Student Absenteeism

	2020-2021 School Year			2021-2022 School Year			
Group	Attendance Rate	Avg # Absences	Absent ≥10 Days	Attendance Rate	Avg # Absences	Absent ≥10 Days	Net Change
All Students	97.3%	4.4	11.1%	94%	10.5	40.3%	+29.2%
Students w/ Disabilities	95.8%	6.8	20.1%	91.6%	15	52.4%	+32.3%
African American / Black	95.6%	7.2	21.7%	91.7%	14.4	51.6%	+29.9%
Asian	97.8%	3.5	8.2%	95.2%	8	28.9%	+20.7%
Hispanic / Latinx	96%	6.5	18.6%	92.2%	13.5	51.8%	+33.2%
Multi-Race (Non-Hispanic)	97.5%	4.2	10.1%	94%	10.5	39%	+28.9%
White	97.5%	4.1	9.6%	94.2%	10.2	41.2%	+31.6%

Chronic Absenteeism

	2022-2023 School Year			
School	# of Students Chronically Absent	Avg # Absences for Chronically Absent	Absent ≥ 5 Days	# of Students Unexcused Absences ≥ 5 Days
Baker	130	8	19%	48
BHS	258	9.5	12%	27
Driscoll	87	7	19%	27
FRR	189	8.5	22%	102
Heath	89	7	19%	21
Lawrence	136	7	22%	27
Lincoln	96	7	20%	17
Pierce	135	7	19%	24
Runkle	132	9	27%	34

Strengthening Student Attendance in PSB

Research and best practice emphasizes prevention, monitoring, and early intervention.

- **Prevention**

- Ongoing messaging to families and students that emphasizes the importance of attendance.
- Clear communication regarding attendance policy and regulations (e.g., excused vs unexcused)
- Strengthening belonging and relationships.

- **Monitoring and Communication**

- School teams regularly run attendance and tardy reports.
- School team notify parents once a student has been absent/tardy 5 times and 10 times.

- **Early Intervention**

- Ongoing collaboration with guardians and support for students before a student is chronically absent (i.e., before the attendance challenge is entrenched).

How are we addressing the results?

- Work with School Leaders around school-based analysis and targeted support
- Strengthen attendance practices
- CST/MTSS Review
- Implementation of mClass Literacy Assessment & Dyslexia Screener
- Continued leverage of K-8 Literacy & Math Specialist and Coaching support
- Middle School Review
- Reimaging 9th Grade
- Ongoing SEL Initiatives
- Revisiting of attendance policies (OSS)
- Continued partnership with various community groups (Steps to Success, BA&CE, Brookline Community Foundation, Brookline Recc, Brookline Teen Center)



Questions?