

10th Grade Career Exploration!



Getting Started With Naviance

What is MI Advantage?

Your Multiple Intelligences

You will take an assessment that uses the [Multiple Intelligences](#) (MI) theory by asking you questions about how you learn best.



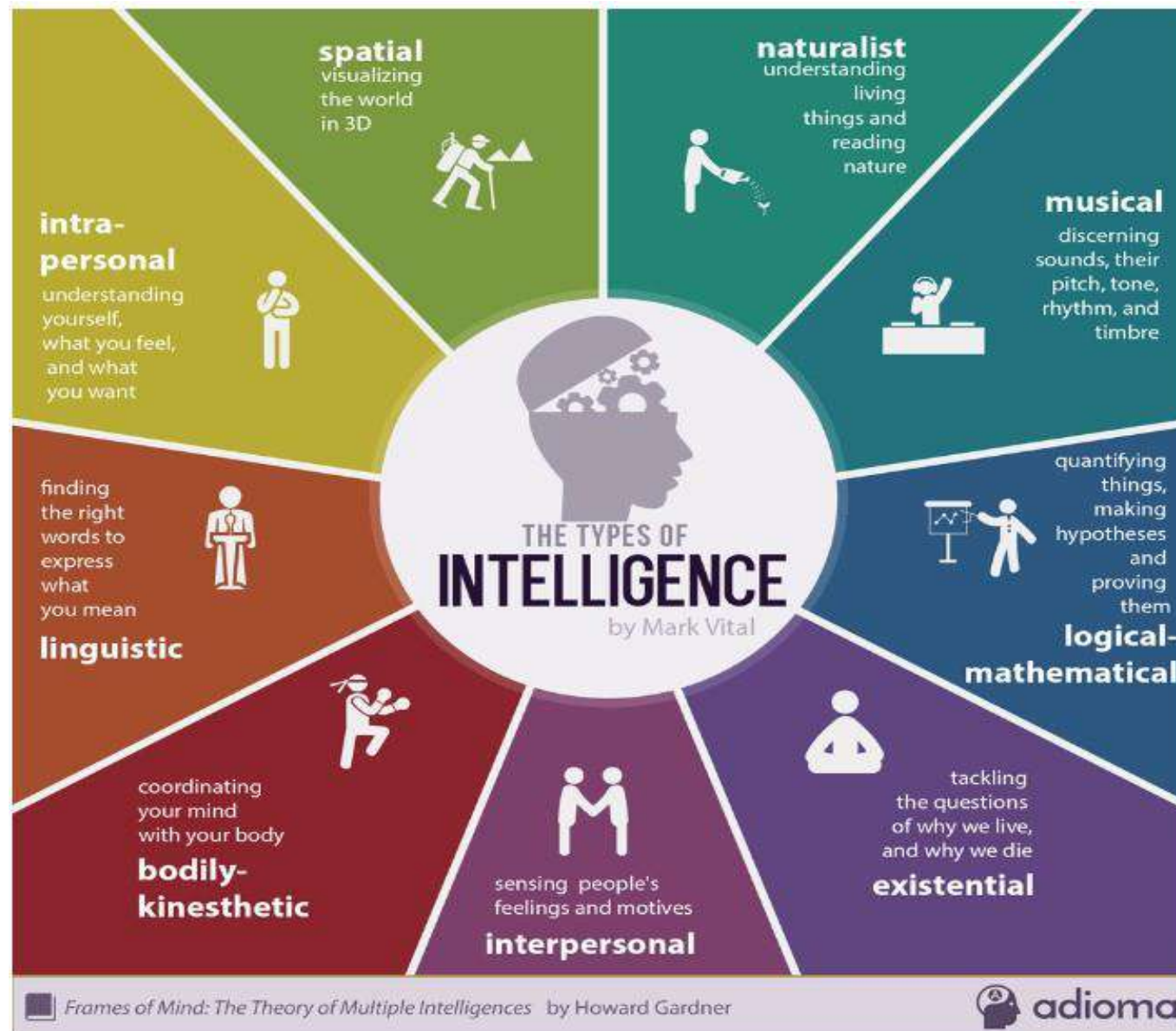
Remember...

Every person does NOT learn in the same way

Each of the [nine](#) intelligences represent different areas of the brain that process information

- **Bodily-kinesthetic**
- **Existential**
- **Interpersonal**
- **Intrapersonal**
- **Linguistic**
- **Logical-mathematical**
- **Musical**
- **Naturalist**
- **Spatial**

9 Types of Intelligence





<https://student.naviance.com/cshhs>

Log in to Naviance Student

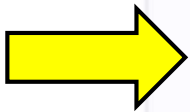


Welcome to Naviance Student.



Please choose your user type.

This allows Naviance to help you log in the way your school and district prefers.



Student



Parent or
Guardian



Alumni

[I'm new and need to register!](#)

Welcome Student!



Login to Naviance

Email or username

For example navigator@naviance.com

Password

Type password

☐

Remember me

[Forgot your password?](#)

CONTINUE

[Need additional help?](#)

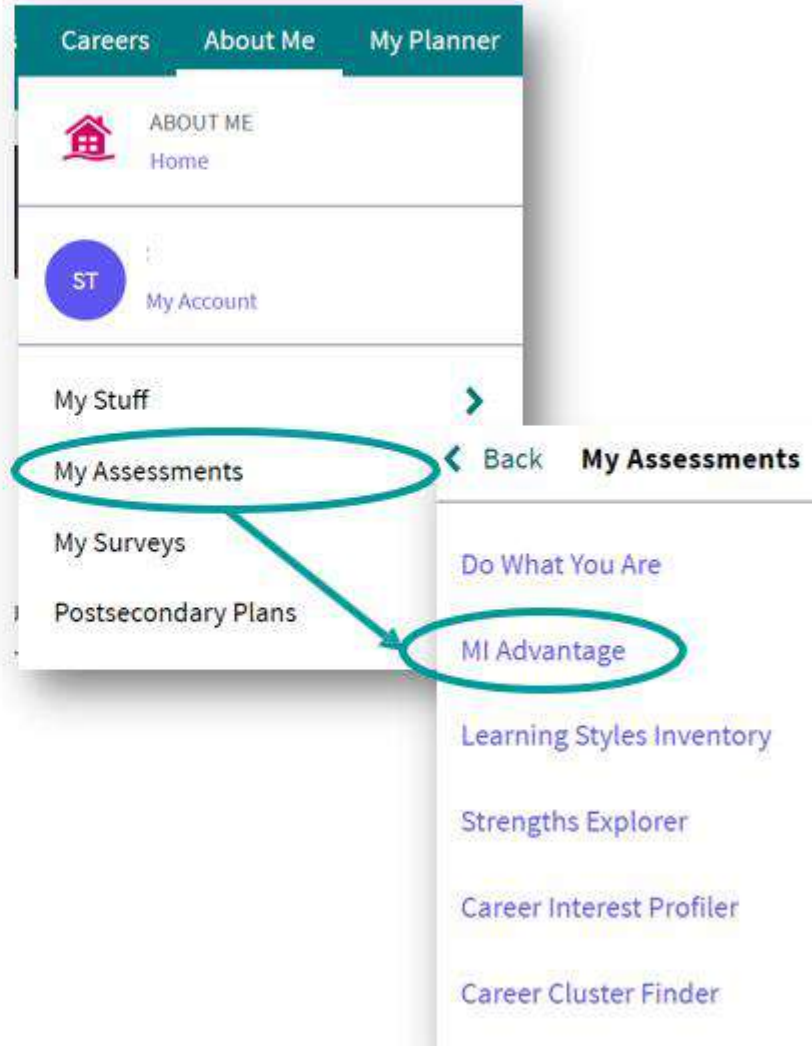
[I'm new and need to register!](#)

Uncover your Intelligence Profile

Click **About me > My Assessments >** then click the link to **MI Advantage**

The questions are about your abilities and preferences in different areas.

Be honest with your answers, because the results will help you make better decisions in the future!



Complete the Assessment

Click the **Take Assessment** button to begin.

The questions take less than 20 minutes. To get the best results:

- Relax, there are no right or wrong answers
- Be honest about your abilities
- Don't be influenced by what others may expect of you

Based on accurate answers, your results will help:

- You use your strengths in school, work and other activities
- Teachers and counselors understand you better
- You find out which educational and career paths are a good fit

Take assessment



Understanding the Results

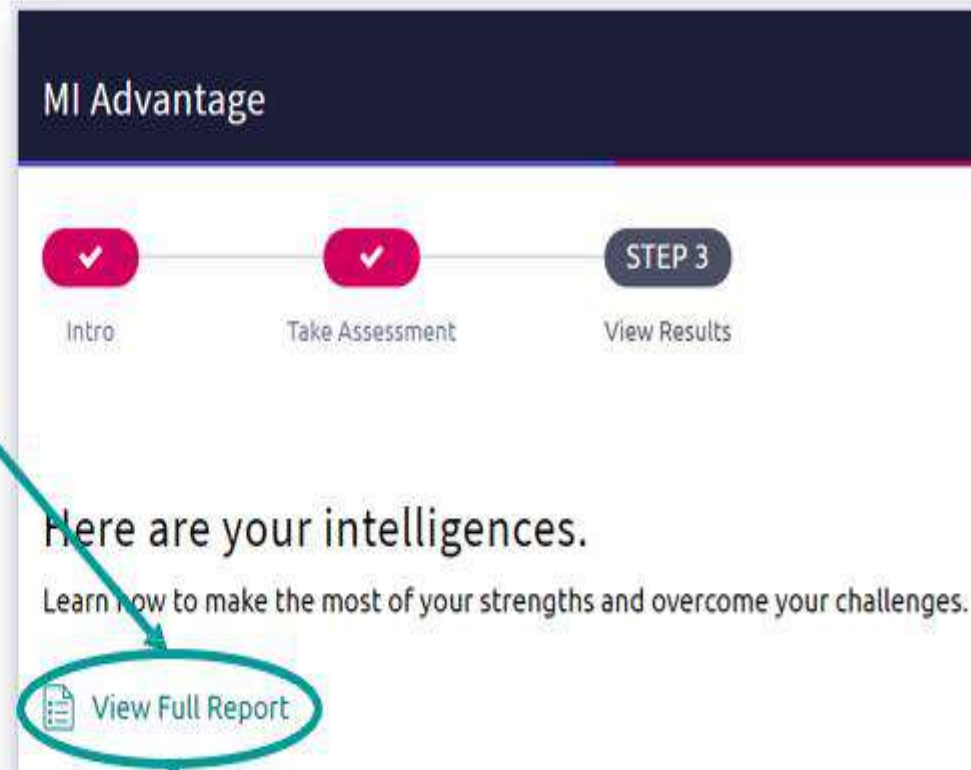
Here are your Intelligences Results



Making the Most of Your Results

After completing the assessment, click **View Results**.

Click the link to **View Full Report** to get your detailed intelligence profile.



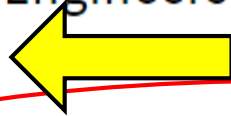
Making the Most of Your Results

Scroll down to click the link to **See Related Careers** and get information about careers that match your strengths.



SEE RELATED CAREERS

Robotics Engineers

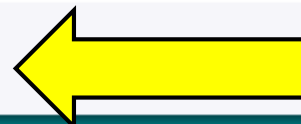


Overview

Knowledge and Skills

Tasks and Activities

Wages



Job Description

Research, design, develop, or test robotic applications.

Interests - Holland Interest Code

Investigative

Investigative occupations frequently involve working with ideas, and require an extensive amount of thinking. These occupations can involve searching for facts and figuring out problems mentally.

Realistic

Realistic occupations frequently involve work activities that include practical, hands-on problems and solutions. They often deal with plants, animals, and real-world materials like wood, tools, and machinery. Many of the occupations require working outside, and do not involve a lot of paperwork or working closely with others.

Conventional

Conventional occupations frequently involve following set procedures and routines. These occupations can include working with data and details more than with ideas. Usually there is a clear line of authority to follow.

Discussion and Conclusion