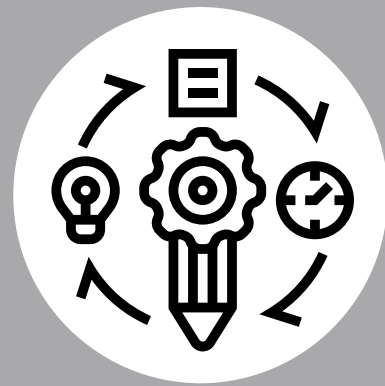


OUR EFFORTS SINCE THE LAST BOND REFERENDUM



Southwest Area CTE

DPS worked with state and community partners to create a state-of-the-art CTE Center without raising taxes.



Partnerships with DSU & Community

Utilized DSU, Virtual learning, CTE, School to Work, and the middle school to help with space constraints at high school.



Reconfigured Plan

Created a \$69M plan to update the high school and add secure entrances to all the elementary schools.



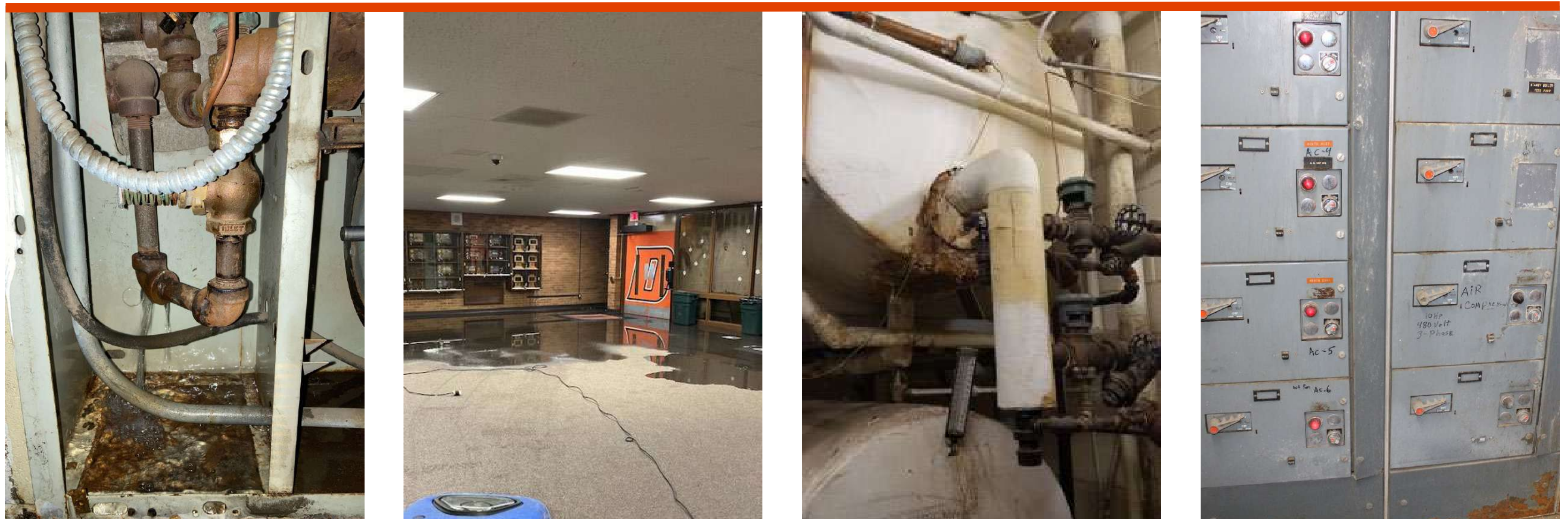
Community- Wide Survey

Surveyed the community to inform on current needs and test if there is support for a \$69M bond.

DHS BUILDING CHALLENGES

A large portion of the District facility needs resides in Dickinson High School, with an estimated \$35 million in upkeep and repairs, without improving the space specifically for current educational needs. The major projects at the high school include the following:

- Roofing Repairs/Replacement
- Fire Protection Systems
- HVAC Replacement
- Kitchen/Cafeteria Upgrades
- Electrical Upgrades and Improvements
- Intercom and Clock/Bell Systems
- ADA Accommodations
- Safety and Security



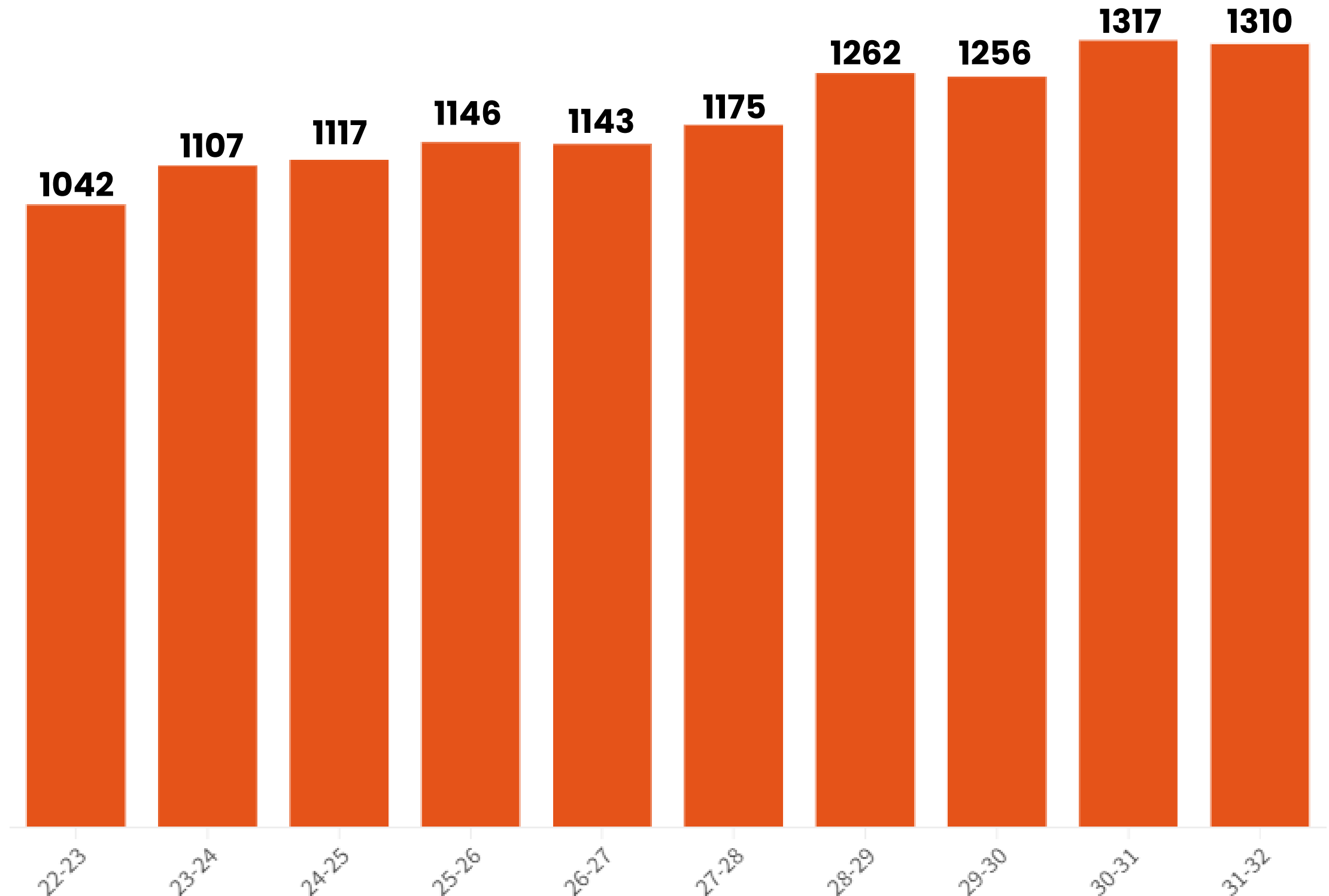
DHS CAPACITY CHALLENGES

PROJECTED FUTURE DHS ENROLLMENT BASED ON 2022-2023 ENROLLMENT

Dickinson High School is at capacity and will continue to see growth.

The Southwest Area Career and Technical Education Academy will provide some relief, but growing enrollment will continue to challenge the building. Incoming classes are projected to be larger than those graduating, furthering the classroom space challenges at the high school.

These numbers do not account for additional growth in our community or schools.



DPS COMMUNITY FACILITIES SURVEY

Dickinson High School

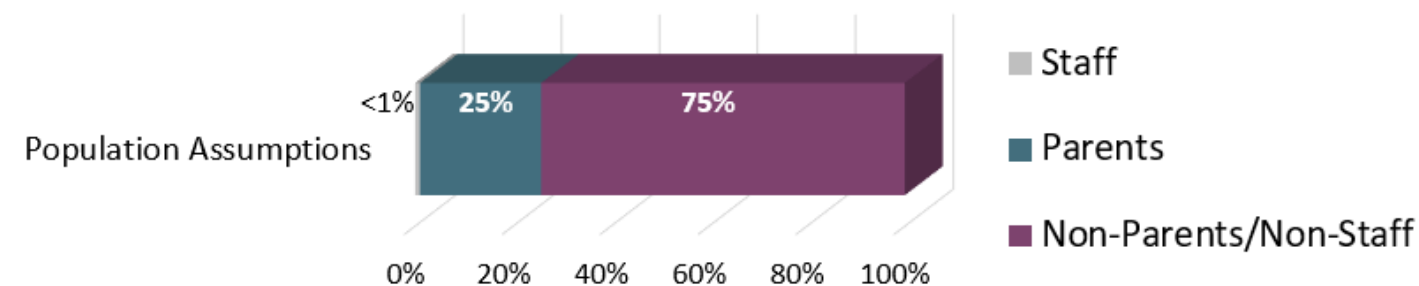
Would you support a \$69M bond to renovate Dickinson High School?

Definitely/Probably Yes – **83%** of Staff survey respondents

Definitely/Probably Yes – **72%** of Parent survey respondents

Definitely/Probably Yes – 52% of Non-Parents/Non-Staff

Weighted support for Definitely Yes and Probably Yes:



Weighted Survey Support:

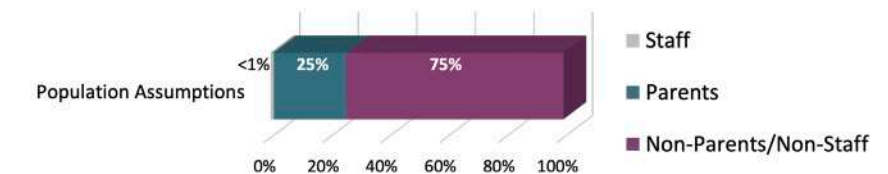
$.25(72\%) + .75(52\%) = 57.0\%$
(Structured to predict likely referendum outcome)

- +/- 2.6% margin of error
- 10-13% of survey respondents are undecided

Elementary Options

Survey results showed insufficient support for options given to address elementary growth.

Additional Analysis: Elementary Options (Addition)



Weighted support for *Definitely yes and Probably yes*:
 $0.25(49\%) + 0.75(38\%) = \mathbf{40.8\%}$

We are listening to our community and not pursuing an additional elementary ask at this time.

SOLUTION WILL PROVIDE:

- Adequate places for students and staff to collaborate
- Reliable climate control for the high school
- Space to allow options for students to learn effectively
- Suitable area for high school students to eat lunch in the lunchroom
- Renovating the high school to be accessible for students and all members of the community
- Secure entrances for all staff and students throughout the district
- Continue to develop CTE space for community



WHAT'S IN THE \$69 MILLION PLAN?

High School

- 01 Addresses classrooms, cafeteria, and a secure entrance
- 02 Removes classroom pods and space up to the gym
- 03 Construction of an addition that will remain on the current Dickinson High School campus
- 04 New addition will replace classroom pods, yellow building, and drivers ed building

Elementary

- 05 Increase safety and security features in elementary schools with secure entries



TAX IMPACT

Type of Property	True & Full Value	Monthly Tax Increase
Residential	\$100,000	\$11.59
Commercial	\$100,000	\$12.88
Ag (Cropland)	\$1,000	\$0.09
Ag (Non-Cropland)	\$1,000	\$0.02

Tax Calculator on <https://www.dickinson.k12.nd.us> (8/25/23)

WHY IS RENOVATING THE PODS IS NOT THE BEST OPTION?

Classrooms would be unavailable during renovation and disrupt learning.

Learning
Loss/
Interruption

Long Time
Frame

Renovating classroom pods would take 3-4 years to complete.

Preliminary construction estimates indicate that renovating will cost at least 80% of the cost of building new.

Fiscal
Responsibility



Inefficiency

Unknowns

There are unknown costs when renovating the pods.

The shape of the pods creates classrooms with inefficient spaces and limits student circulation