

Grade 1 – Kandinsky Analogous Trees



Color

What do you see?



Color Study Squares with Concentric Circles, 1913, Wassily Kandinsky

Artistic Focus: Color



Color Study Squares with Concentric Circles, 1913, Wassily Kandinsky

COLOR is the visible range of reflected light. Color has three properties:

- Hue
- Value
- Intensity (brightness or dullness)

Today's objective:

1. Learn about **analogous colors** or **friendly colors**
2. Create a collage inspired by Kandinsky's Concentric Circles
3. If you do not have coloring materials, please research Wassily Kandinsky. Download 3 pieces of your favorite paintings.

Wassily Kandinsky

- Russian painter and art theorist
- 1866-1944
- Taught art at the Bauhaus school in Munich, Germany 1922-1933
- Lived and worked in France from 1933 until the end of his life
- Was fascinated by color from an early age
- Began to study art seriously only at age 30
- Before age 30 he was a successful law and economics professor
- Credited with painting one of the first recognized purely abstract works

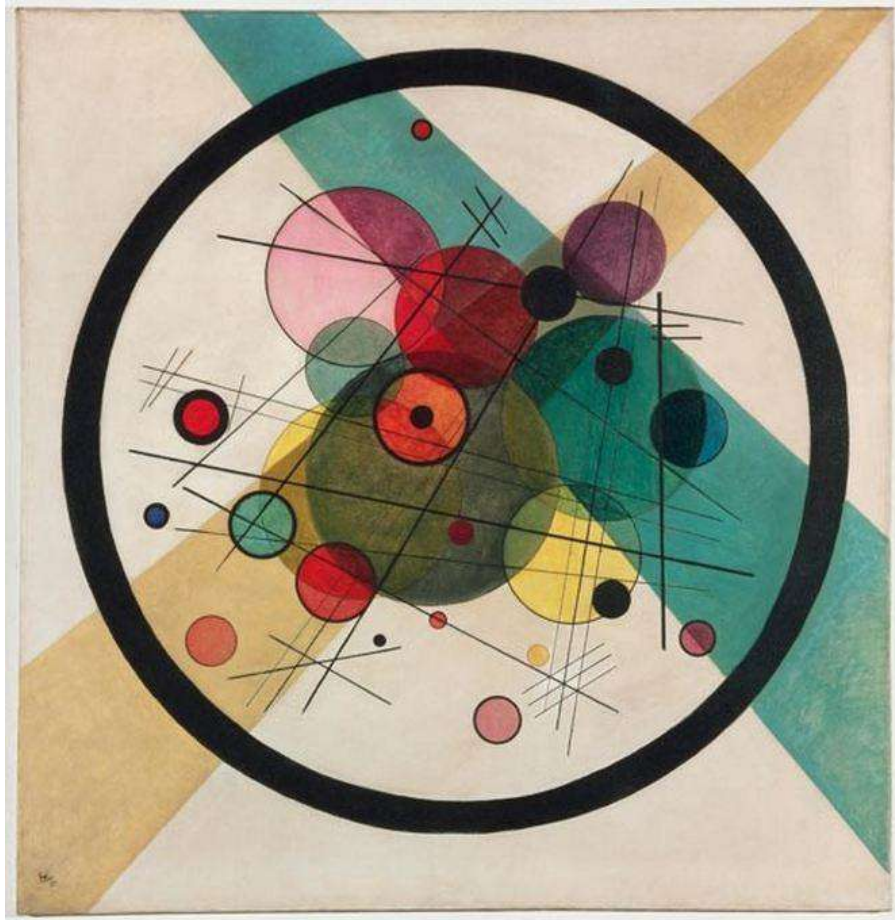


Artwork



Color Study Squares with Concentric Circles, 1913, Wassily Kandinsky

Artwork



Circles in a Circle, 1923, Kandinsky



Several Circles, 1926, Kandinsky

Materials

Brown oil pastel or crayon



Scissors



Construction paper



Glue stick

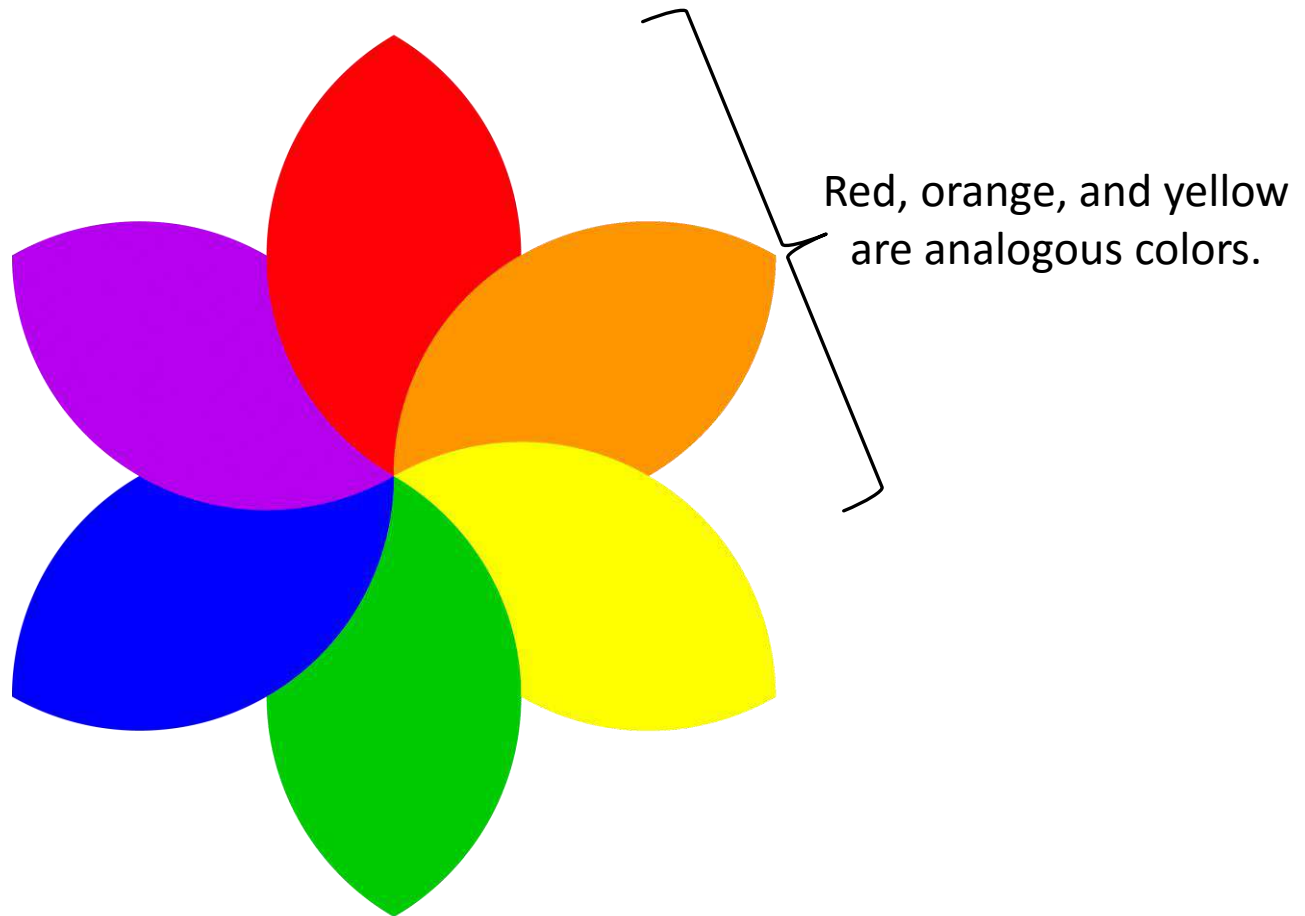


Example of Today's Project



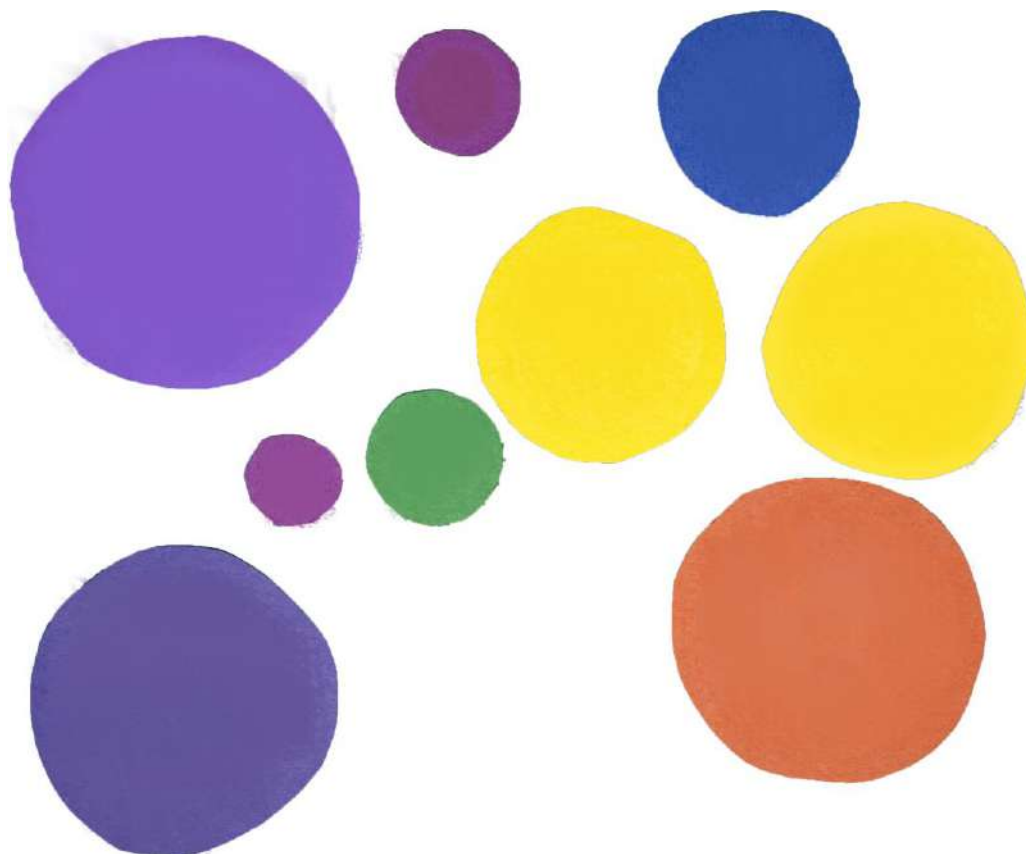
Step 1

- **Analogous colors** or I also call them **friendly colors** are next door neighbors on the color wheel.
- We are going to make stacks of concentric circles with three analogous colors.



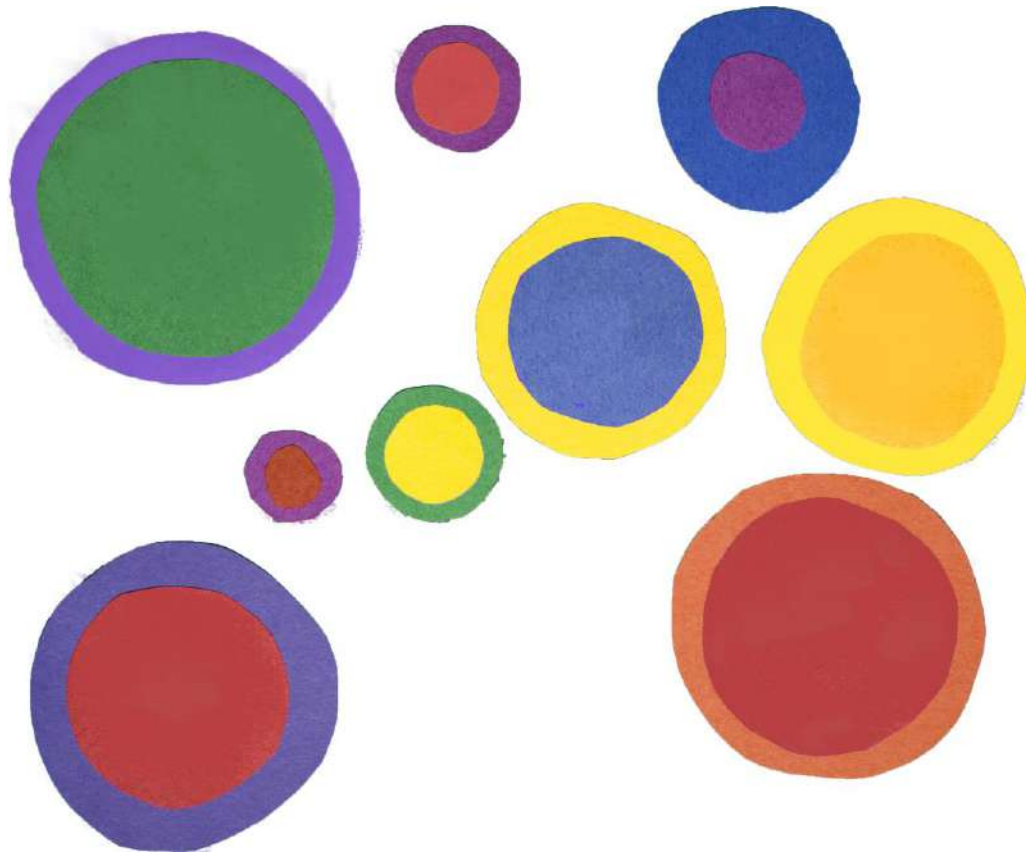
Step 2

- Cut out several circles. Trace a plastic cup or another circle shape for a true circle. Use different sizes if you have them.
- These will be the bottom layer.
- Plan ahead to be sure you have only **analogous colors or friendly colors** in each stack.



Step 3

- Cut out smaller circles to fit inside the bottom ones.
- Remember your **analogous color or friendly color** plan.



Step 4

- Sticking to your **analogous color or friendly color** plan, cut out smaller circles to fit inside the bottom ones.
- Now use your glue stick to glue your stacks together.



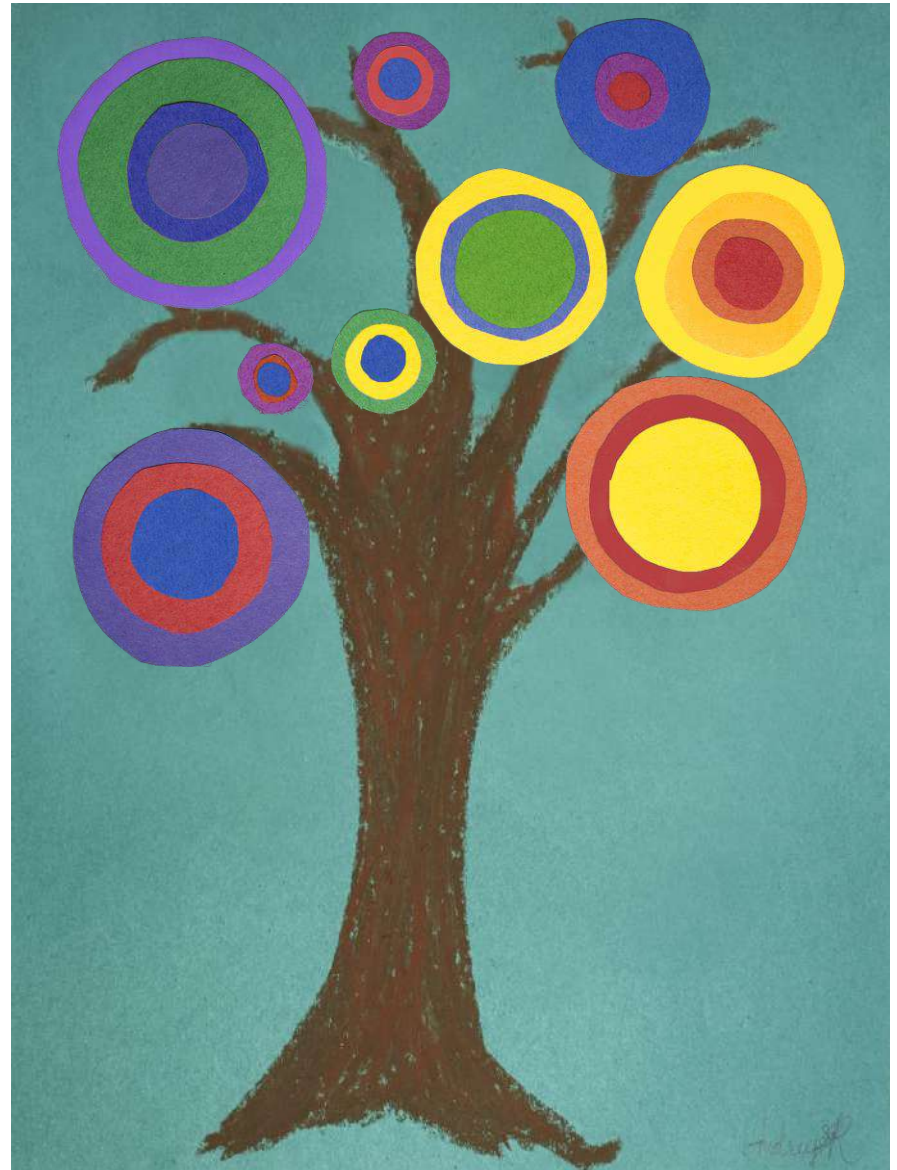
Step 5

- Use brown oil pastel or crayon to draw your tree trunk and branches.
- Draw straight onto the paper with the oil pastel or crayon – no need to draw your tree first in pencil.
- Feel free to use more than one shade of brown if you have them.



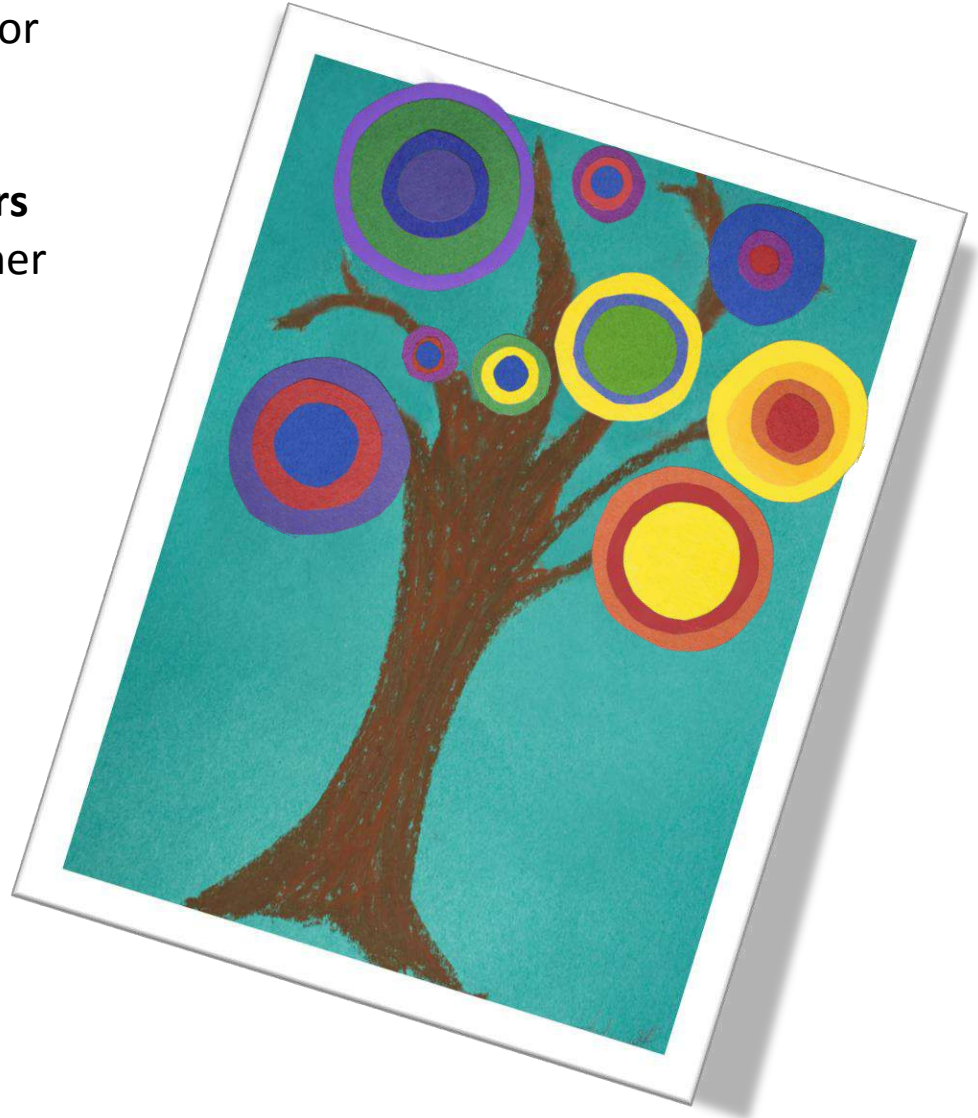
Step 6

- Now glue your **analogous color** or **friendly color** stacks onto your tree branches.
- Stand back and admire the most colorful tree you have ever seen!



Reflection

- How did you like thinking of color this way?
- Does it feel like **analogous colors** or **friendly colors** belong together somehow?
- What was your favorite part of this project?



Credits

1. About Kandinsky https://en.wikipedia.org/wiki/Wassily_Kandinsky
2. [https://en.wikipedia.org/wiki/Wassily_Kandinsky#/media/File:Vassily_Kandinsky, 1913 - Color Study, Squares with Concentric Circles.jpg](https://en.wikipedia.org/wiki/Wassily_Kandinsky#/media/File:Vassily_Kandinsky,_1913_-_Color_Study,_Squares_with_Concentric_Circles.jpg)