

Woodridge Elementary School

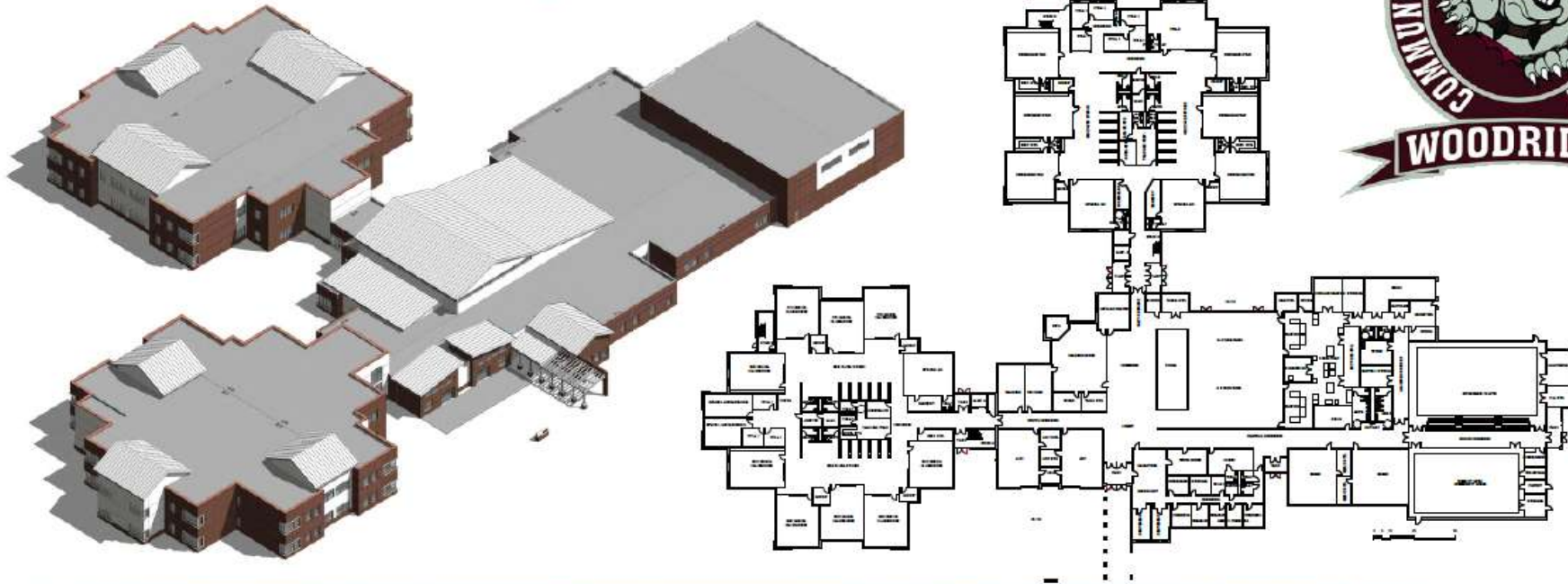


BRAUN & STEIDL
architects

WELTY
BUILDING COMPANY LTD.



Woodridge Elementary School



BRAUN & STEIDL
architects

WELTY
BUILDING COMPANY LTD.



Commons
River/ Waterfall/
Blue Heron



FINISHES, MURALS
AND WAYFINDING

Pre-K and Kindergarten
Scenic Railroad/ Forests

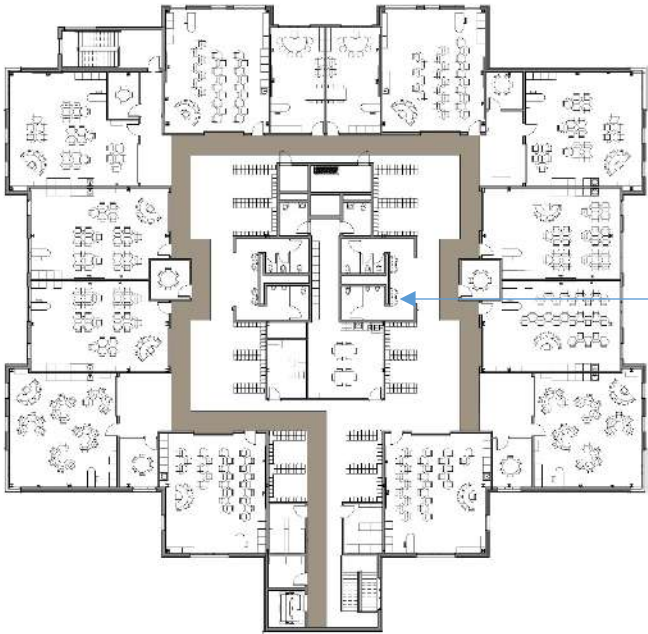


Third and Fourth Grade
Boardwalk/ Marshes



FIRST FLOOR

Fourth and Fifth Grade
Hiking and Biking /Rolling Hills



FINISHES, MURALS
AND WAYFINDING

First and Second Grade
Towpath/ Meadows



SECOND FLOOR

Woodridge Elementary School



BRAUN & STEIDL
architects

WELTY
BUILDING COMPANY LTD.



Woodridge Elementary School

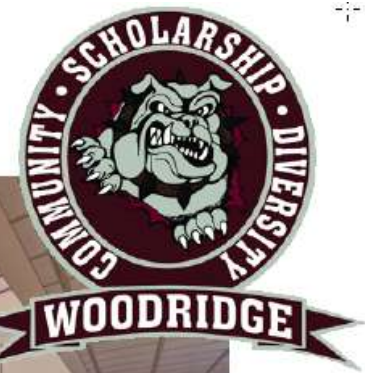


BRAUN & STEIDL
architects

WELTY
BUILDING COMPANY LTD.

R
REGENCY
CONSTRUCTION 517 • 113

Woodridge Elementary School



BRAUN & STEIDL
architects

WELTY
BUILDING COMPANY LTD.

R
REGENCY
CONSTRUCTION SUPPLY CO.

Woodridge High School



BRAUN & STEIDL
architects

WELTY
BUILDING COMPANY LTD.



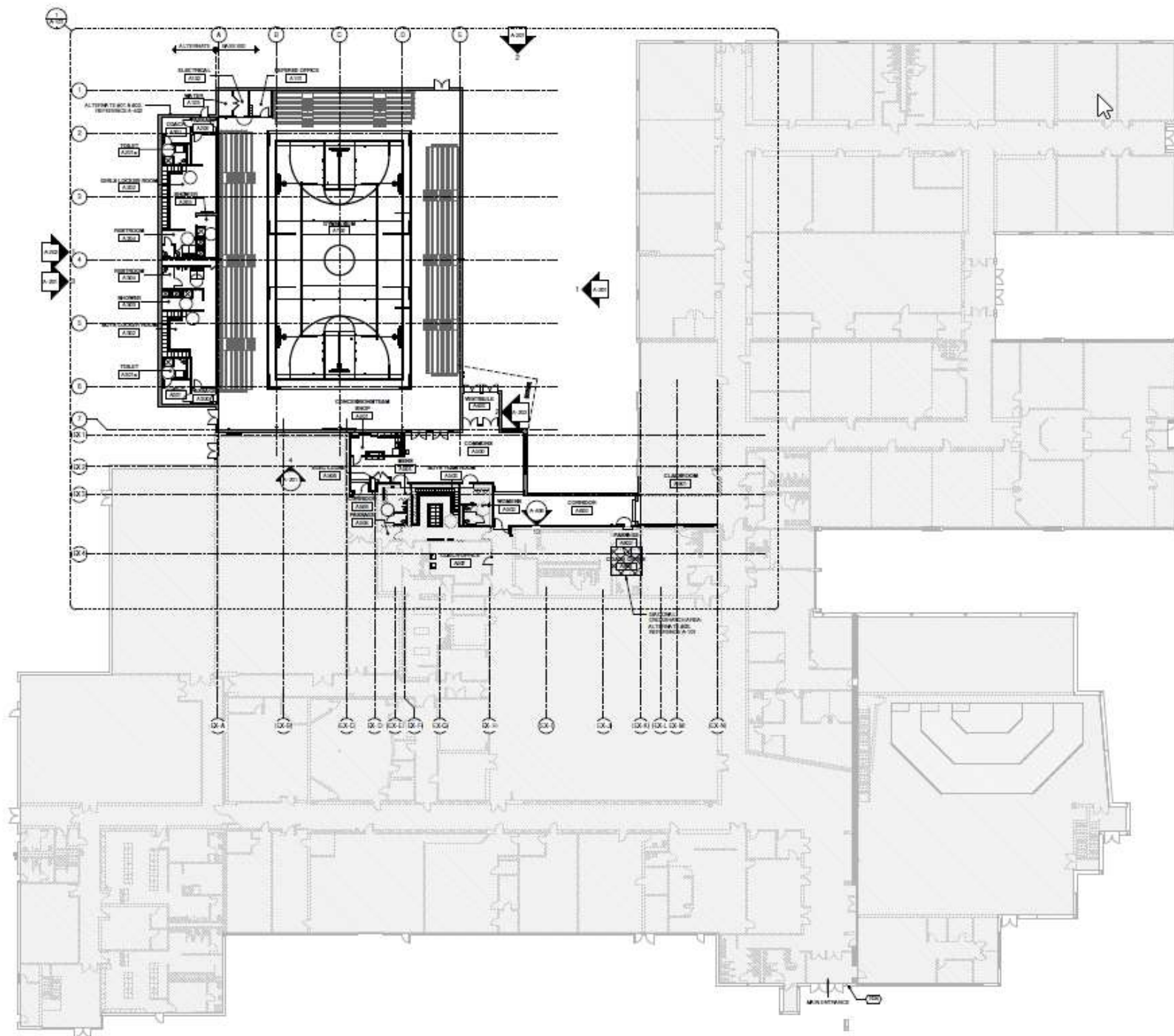
Woodridge High School



BRAUN & STEIDL
architects

WELTY
BUILDING COMPANY LTD.







Woodridge Local School District
Project Budget Summary
New Elementary School and High School Addition/Renovation
January 11, 2017

Bond Issue Amount	\$	33,500,000
Middle School Roofing Project Actual Cost	\$	982,557
Elementary and High School Budget	\$	32,517,443
Recommended Construction Manager GMP	\$	27,971,082
Soft Cost and Owner Hard Cost Contingency Balance	\$	4,546,361