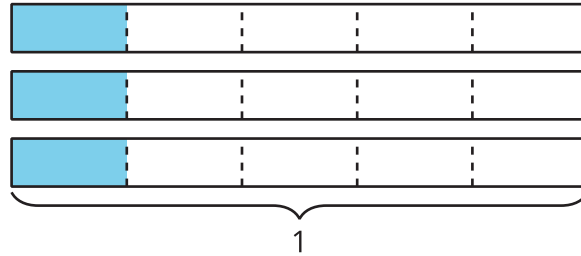


Fractions as Quotients and Fraction Multiplication: Section B Checkpoint

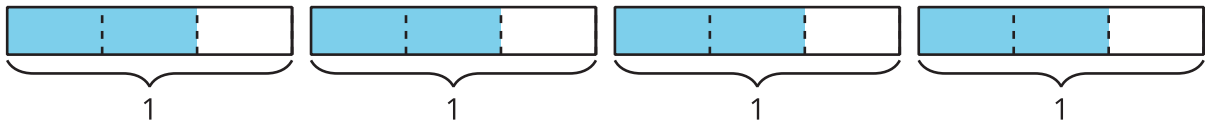


1. a. Explain how the diagram shows $3 \div 5$.

- b. Explain how the diagram shows $3 \times \frac{1}{5}$.

- c. What is the value of $3 \div 5$? Explain or show your reasoning.

2. Explain or show how each expression represents the shaded parts of the diagram.



a. $2 \times (4 \div 3)$

b. $4 \times \frac{2}{3}$

c. $4 \times 2 \times \frac{1}{3}$
