

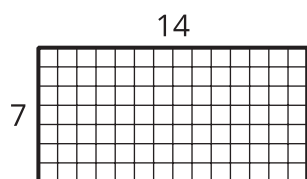
Lesson 15: Equal Groups, Larger Numbers

- Let's solve some problems with equal groups that have larger numbers.

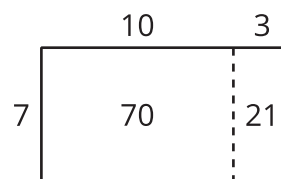
Warm-up: Which One Doesn't Belong: Rectangles

Which one doesn't belong?

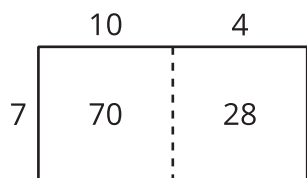
A



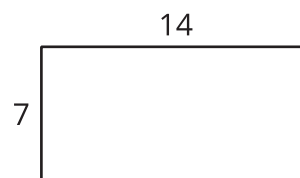
B



C



D



15.2: Gallery Walk: Equal Groups, Larger Numbers

As you visit the posters with your partner, discuss what is the same and what is different about the thinking shown on each poster.