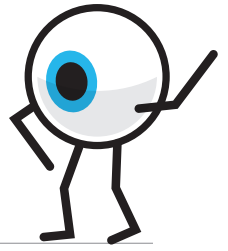


Time to get to work!



Work That Word: Vocabulary Strategies

The new word exercises laid out in this printable worksheet support students as they select and practice one or more strategies to determine the likely meaning of an unknown word in a text and refine their understanding of that word.

These strategies align to those taught in the Amplify Vocabulary Modules and practiced in the Amplify Vocab App. Each instructional module is embedded in the Unit Overview at the start of each unit. Amplify recommends teaching each module during the lesson vocabulary time between lessons 1–5 of the indicated unit.

Grade 7 Vocabulary Modules

Unit 7A: *Red Scarf Girl* & Narrative

- SU2: **Get Started:** *Dictionary Skills*
- SU3: **Red Scarf Girl: A Memoir of the Cultural Revolution:** *Context Clues*

Unit 7B: **Character & Conflict:** *Connotations and Denotations*

Unit 7C: **Brain Science:** *Greek and Latin Roots*

Unit 7D: **Poetry & Poe:** *Figurative Language*

Unit 7E: **The Frida & Diego Collection:** *Prefixes and Suffixes*

Unit 7F: **The Gold Rush Collection:** *Synonyms and Antonyms*

Students should use this worksheet weekly to continue to practice the key unit text vocabulary identified by the Reveal tool, translated in the Amplify Library Multi-Language Glossaries, and used in the adaptive Vocab App.

Name: _____ Date: _____

Vocabulary Part I: Determine the Meaning of an Unknown Word

Grades 6–8

Instructions: Write down a word from your reading that you do not know. Then use the strategies below to determine a likely meaning of your unknown word.

Word:

Strategy 1: Identify context clues

[Information about a word's meaning contained in the sentence or sentences surrounding the word]

1. Write down the context sentence or passage that contains the new word: _____

2. Identify the part of speech: _____
3. Highlight and label any context clues (definition, example, synonym, contrast) in the context sentence(s).

Strategy 2: If possible, break out the roots, prefixes, and suffixes

New word: _____

Prefix: _____ Root: _____ Suffix: _____
_____ + _____ + _____

Strategy 3: Paraphrase the context sentence(s) by restating the text as closely as possible, leaving nothing out and adding nothing new.

How did you rewrite your unknown word? _____

The likely definition for my word is: _____

Name: _____ Date: _____

Vocabulary Part II: Refine Your Word Understanding

Grades 6–8

Instructions: Closely read the context sentence or passage where the word is used. Then, fill out the boxes below using questions 1–3 at the bottom of this page. Write the definition you come up with in question 4.

New word:

Synonyms:

Antonyms:

Connotations:

Figurative Language:

1. Synonyms/Antonyms:

- What are 2–3 synonyms of this word?
- What are 2–3 antonyms of this word?

2. Connotations:

- What are the emotions suggested by the way this word is used in the sentence (positive/negative/neutral/other)?

3. Figurative Language:

- Is this word used figuratively in this passage?
- What is the figurative meaning of the word?

4. Dictionary Skills:

- What dictionary definition best fits the intended meaning of this word in the context sentence(s)?

Definition: _____
