



# Warm-Up 11/17/15

- Create a page in your journal for the following words:
  - Russian Revolution (pg. 93)
  - World War I (pg. 94)
  - World War II (pg. 95)
- On the page for the Russian Revolution, tell me what you think the Russian Revolution was and how it might have affected the people of Russia.

# Things changed during the war

The Triple Alliance and the Triple Entente turned into these two WWI alliances.

The Triple Alliance  
plus more formed the  
**Center Powers**

## The Central powers

Austria-Hungary  
Germany  
Turkey (Ottoman Empire)



The Triple Entente  
plus more formed the  
**Allied Powers**

## The Allied Powers

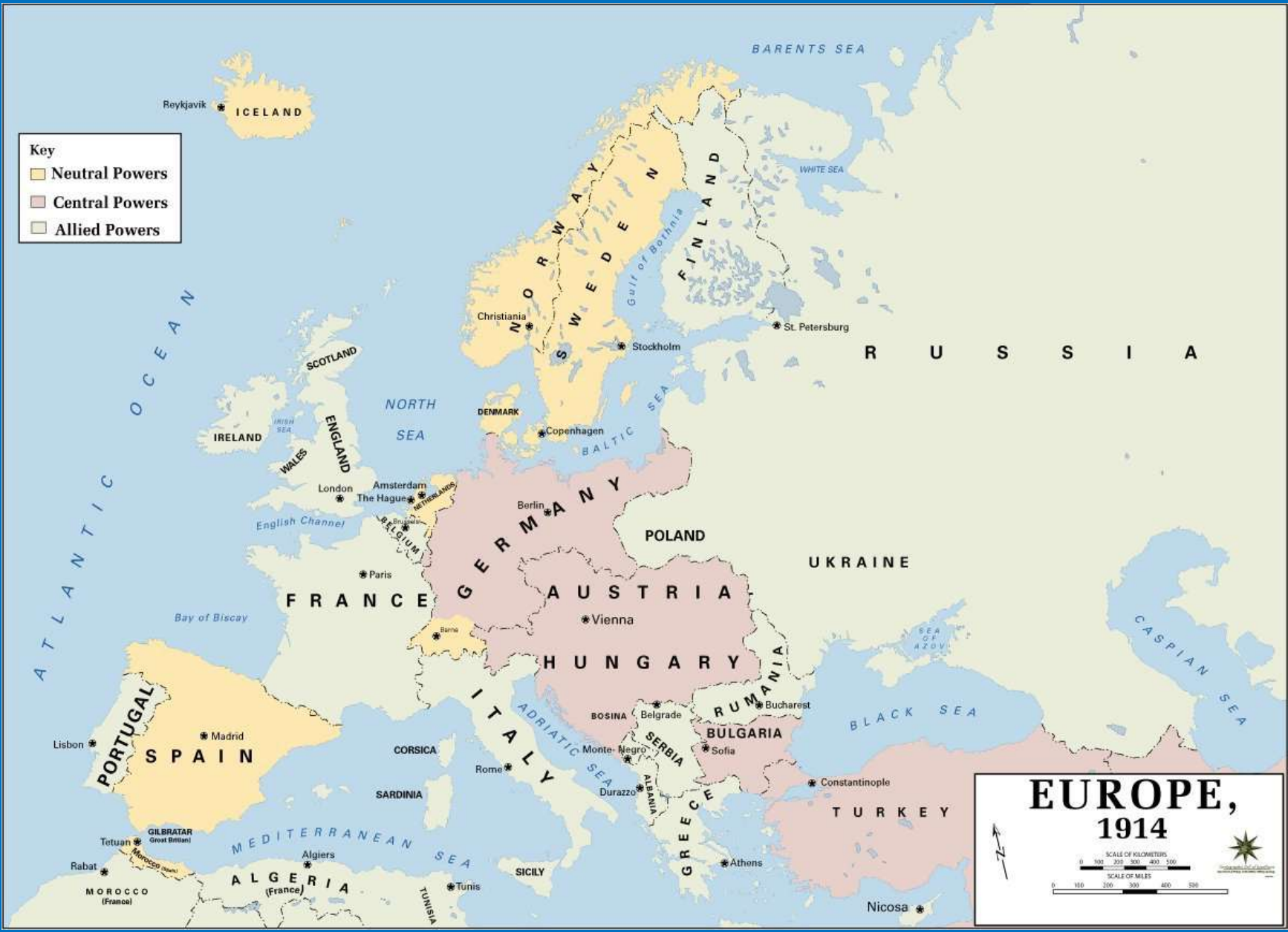
Russia  
France  
United Kingdom  
Italy  
United States

# Europe after WWI

Watch and listen to the clip about Europe after World War I and discuss the questions below.

<http://www.the-map-as-history.com/demos/tome03/index.php>

Why do you think Russia signed a treaty to get out of World War I early? How did the map of Europe change after World War I? How do you think these changes affected people in Europe?



**Key**

- Neutral Powers
- Central Powers
- Allied Powers

**EUROPE, 1914**

SCALE OF KILOMETERS  
0 100 200 300 400 500

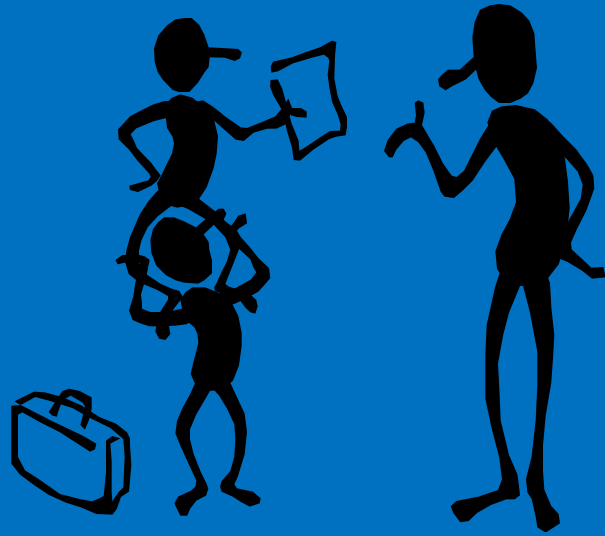
SCALE OF MILES  
0 100 200 300 400 500

# Statistics from WWI

| Nation  | Total Number of servicemen in the war. | Number of deaths | Number of soldiers wounded | Number of men taken prisoner or reported missing |
|---------|--|------------------|----------------------------|--|
| Austria | 7,800,000                              | 1,200,000        | 3,620,000                  | 2,200,000  |
| Britain | 8,904,467                              | 908,371          | 2,090,212                  | 191,652  |
| France  | 8,410,000                              | 1,357,800        | 4,266,000                  | 537,000  |
| Germany | 11,000,000                             | 17,737,000       | 4,216,058                  | 1,152,800  |
| Italy   | 5,615,000                              | 650,000          | 947,000                    | 600,000  |
| Russia  | 12,000,000                             | 1,700,000        | 4,950,000                  | 2,500,000  |
| Turkey  | 2,850,000                              | 325,000          | 400,000                    | 250,000  |
| U.S.    | 4,355,000                              | 126,000          | 234,300                    | 4,500  |

# Some of the Technological Advances from WWI

- Tank
- Aircraft
- Machine Gun
- Gas used as a weapon
- Flamethrower
- Submarines (invented earlier, used more now)



# Distributed Summarizing

Could World War I have been prevented? Why or why not? Would we have had the technological advances without WWI?

*Why or why not?*



Day 2

# Russia: A Background

- Nicholas II – autocratic and ineffective
- He ruled a country covering one-sixth of the earth's total land surface
- He had massive personal wealth – *personal traits*
- He was backed by an army of 1 million and secret police – *militarism*
- Political parties banned – critics ended up in prison or exile – *politics*
- Press was censored – *Media*

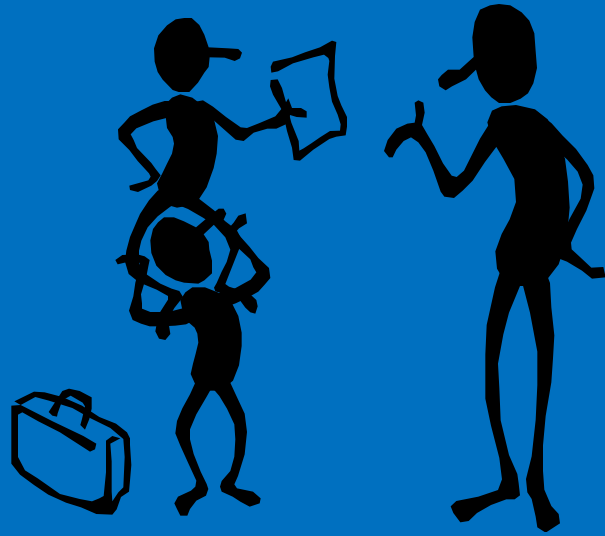
# Russia: A Background

- Many Russians worshipped the Tsar and peasants typically had a picture of the Tsar on a wall of their hut. — Descriptions of Russians
- His word was law — Leadership
- He appointed his ministers
- But did not have to listen to them
- AND could 'hire and fire' them at will
- He was a true autocrat. — Leadership



# Russia was...

- Only 40% ethnic Russians
- 80% were peasants – subsistence farmers
- 60%+ = illiterate
- Life expectancy = 40
- Low tech and low investment
- Land ownership rare
- Land owned by the Commune
- It also organized taxes and allotted strips of land to each household



# Distributed Summarizing

During the time described, Russia  
was like \_\_\_\_\_ because  
\_\_\_\_\_.

Share your answer with a partner.