



# CURRICULUM GUIDE 2019-20

## GO BEARS!



A+

# PLAN YOUR FUTURE

EPATHWAYS PG 8

INTERNATIONAL  
BACCALAUREATE PG 17

ADVANCED PLACEMENT  
& DUAL ENROLLMENT PG 34

ACADEMIC  
& ELECTIVE PG 35



## TABLE OF CONTENTS

WINTER SPRINGS HIGH SCHOOL MISSION STATEMENT .....	1
GENERAL INFORMATION .....	3
SCHEDULE CHANGE PROCEDURE.....	5
FLORIDA BRIGHT FUTURES SCHOLARSHIP PROGRAM .....	6
EPATHWAYS .....	8
SEMINOLE COUNTY VIRTUAL SCHOOL.....	12
WSHS INTERNATIONAL BACCALAUREATE DP PROGRAMME.....	17
ADVANCED PLACEMENT/DUAL ENROLLMENT .....	34
LANGUAGE ARTS.....	35
MATHEMATICS .....	38
COMPUTER SCIENCE .....	41
SCIENCE .....	42
SOCIAL STUDIES .....	45
WORLD LANGUAGES .....	48
FINE AND PERFORMING ARTS .....	50
ART.....	50
DRAMA.....	52
MUSIC .....	53
DANCE.....	55
PHYSICAL EDUCATION .....	55
EPATHWAYS CAREER PROGRAMS OVERVIEW.....	57
THE CULINARY ARTS ACADEMY .....	57
THE DESIGN ACADEMY.....	58
DIGITAL DESIGN PATH .....	58
DIGITAL MEDIA PATH.....	59
WEB DESIGN PATH.....	60
THE TV PRODUCTION ACADEMY .....	60
THE BUSINESS ACADEMY .....	61
NON-ACADEMY CAREER AND TECHNICAL COURSES.....	62
GENERAL ELECTIVES .....	62
VOLUNTEER SERVICE .....	64
PLATO .....	64
EXCEPTIONAL STUDENT SERVICES .....	65
HIGH SCHOOL PLANNING GUIDE .....	67
I N D E X.....	INDEX-I
SCHOOL MAP .....	MAP-I



## **WINTER SPRINGS HIGH SCHOOL MISSION STATEMENT**

*Through the individual commitment of all, our students will graduate with the values, skills, knowledge, and attitudes necessary to be productive citizens.*

Dear Winter Springs Students and Parents,

Selecting your courses is one of the most critical decisions you make each year in high school. Why? Because choosing the appropriate level of coursework, a level that challenges you but does not overwhelm you, can offer the best possible preparation and the best chance for success. Additionally, choosing electives that are interesting to you can open new doors and potentially put you on a path for a future career. As you are considering your courses next year, talk to your teachers, your parents, other students, and be strategic about your registration. It could make a big difference in your future!

Pete Gaffney

Principal, Winter Springs High School

**ADMINISTRATIVE/GUIDANCE STAFF**

Pete Gaffney, Principal .....	320-8702
Jakob Jarzynka, Asst Principal .....	320-8704
Michael Hunter, Asst Principal.....	320-8707
Kristi Draus, Asst. Principal.....	320-8897
Lori Bowman, Asst. Principal.....	320-8726
Octavius Clark, Dean .....	320-8796
Matt Hesselbart, SAM .....	320-8848
Angel Collins, Dean .....	320-8902
Katie Harris, Exec Secretary .....	320-8701
Andrea Hormuth, Student Services Director: IB .....	320-8999
Jozett Spence, Certified School Counselor: ESE .....	320-8895
Marsha McBryde, Certified School Counselor: FI-Ma.....	320-8901
McKenzie Kaplan, Certified School Counselor: Mc-Sc .....	320-8903
Cynthia Urena, Certified School Counselor: Se-Z, ESOL .....	320-8906
Lisa Chiu, Certified School Counselor: A-Fi .....	320-8899
Carmen Beasley, School Testing Coordinator.....	320-8722

## **GENERAL INFORMATION**

### **Seminole County Public Schools Educational Equity - Notice of Nondiscrimination**

The Educational Equity Administrator for Seminole County Public Schools has the responsibility of assuring compliance with the educational equity requirements by providing technical expertise, monitoring activities or programs related to compliance, and responding to equity complaints. One of the responsibilities is to administer the Educational Equity Complaint/Grievance Procedures as adopted by the School Board.

*It is the policy of the School Board of Seminole County, Florida, that no employee, student, or applicant shall - on the basis of race, color, national origin, sex, disability, marital status, age, religion, or any other basis prohibited by law - be excluded from participating in, be denied the benefits of, or be subjected to discrimination and harassment under any educational programs, activities, or in any employment conditions, policies, or practices conducted by the District. Additionally, the School board of Seminole County provides equal access to public school facilities for the Boy Scouts of America and other designated youth groups as required by 34 C.F.R. 108.9.*

Every employee, student, or applicant for employment at Seminole County Public Schools has a solemn right to be treated fairly, equally, equitably, and with dignity. If for any reason you - the employee, student, or applicant for employment - find that you have been victimized by acts of discrimination and or harassment, whether intentional or unintentional, you are strongly encouraged to file an Educational Equity Complaint or Grievance with the Educational Equity Administrator, or any county or school-level administrator. All such complaints must be immediately forwarded to the Educational Equity Administrator for dissemination, action, and resolution. Forward to: SCPS Educational Equity Administrator, Seminole County Public Schools, Educational Support Center, 400 E. Lake Mary Blvd., Sanford, FL 32773-7127. (407) 320-00198

### **Notice to Students and Parents Regarding Course Donations**

In an effort to provide educational enhancements to students beyond the curriculum routinely offered, donations in certain courses historically have been collected in Seminole County Public Schools on a voluntary contribution basis. Every encouragement is given to students and parents to assist Winter Springs High School in continuing the practice of course embellishment that these fees make possible. While such assistance is a practical requirement to maintain current practices, no student shall be denied the opportunity either to take any course or to participate fully in all aspects of a course in which donations are sought. Thank you for your understanding and for your commitment to excellence. JROTC, Band, Chorus, Dance, Flag Corps - Because of the numerous competitions and performance events, these are considered to be extracurricular activities in which fees may be required for items such as uniforms, dry cleaning, workshops and clinics, etc. Additionally, student enrollment in specific courses may be required for participation in these activities.



## **Technology Use in Learning, Motivation and Recognition**

Seminole County Public Schools believe technology is a valuable educational tool. All classroom teachers use technology as an instructional tool. Some examples of such activities are:

Use of the Internet to access encyclopedias, magazines, the district's media/library catalog, web sites for educational projects, on-line district and state classes and to conduct research in preparation for a project or presentation.

Students are photographed or videotaped for the purposes of daily school news broadcasts and yearbooks. Photographs or videos of students are also placed on school/district web pages as a form of recognition for special achievements, activities, projects, and as motivation to be creative.

Student works are published on the Web (Internet) to share stories, poems, and other creative works with other students and the school community and to provide motivation for writing.

*If you wish to have your student excluded from any of the preceding activities, exclusion (opt-out) forms are available on the district website.*

## **Higher Level Course Participation**

Seminole County recognizes the benefits students derive from higher level course participation and the importance of fair and equitable standardized criteria for enrollment in higher level courses.

Students may elect to enroll in higher level courses based on any one of the multiple criteria. Where applicable, prerequisite course completion is required. Multiple enrollment criteria include, but are not limited to, self-selection, teacher recommendation, previous academic success and standardized or state test scores.

## SCHEDULE CHANGE PROCEDURE

Schedule changes are permitted during advertised schedule change time periods for the following reasons:

- Change of academic level (ex. Honors to standard)
- Credit already earned in the class
- Less than 7 credits on schedule
- Prerequisite not met

Reasons for which schedules will not be changed:

- You have changed your mind about a class
- You want a class to be a different period
- You want a different teacher
- You want a different lunch period

<i>Letter Grade</i>	<i>Percentage Range</i>	<i>Quality Points</i>	<i>Definition</i>
A	90-100	4	
B	80-89	3	
C	70-79	2	
D	60-69	1	
F	0-59	0	
I			Incomplete – an I becomes an F at the end of the next semester
P			No points Passing
NG			No mark

### Secondary Grading System Grade Point Average

Seminole County School Board awards weighting for Gifted, Honors, Level 3, Dual Enrollment and AP courses.

#### **Advanced Placement/Dual Enrollment**

- A = 5.0 Quality Points
- B = 4.0 Quality Points
- C = 3.0 Quality Points

#### **Gifted/Honors/Level 3 courses**

- A = 4.5 Quality Points
- B = 3.5 Quality Points
- C = 2.5 Quality Points

### Classification of Students

- |                    |   |
|--------------------|---|
| 9th grade student  | Having been promoted or assigned from 8th grade |
| 10th grade student | Having earned 6 credits beyond 8th grade        |
| 11th grade student | Having earned 12 credits beyond the 8th grade   |
| 12th grade student | Having earned 19 credits beyond the 8th grade   |

### Accelerated Graduation Option

See the "Student Progression Plan" on the SCPS website for specific information. Any interested student should carefully consider if this is an appropriate choice by discussing these options with his/her guidance counselor.

Please consult the SCPS Student Progression Plan for information on waivers for the requirements for physical education, fine arts and specific science courses prior to registration.

## FLORIDA BRIGHT FUTURES SCHOLARSHIP PROGRAM

The Office of Student Financial Assistance (OSFA) State Programs, within the Florida Department of Education, administers a variety of postsecondary educational state-funded grants and scholarships and provides information to students, parents and high school and postsecondary professionals. The Florida Bright Futures Scholarship Program established three lottery-funded scholarships to reward Florida high school graduates for high academic achievement. The Florida Bright Futures Scholarship Program is comprised of the following three awards: Florida Academic Scholars Award (FAS) (including Academic Top Scholars); Florida Medallion Scholars Award (FMS); Florida Gold Seal Vocational Scholars Award (GSV). Each award level has different academic criteria for eligibility and receives a different award amount.

Contact OSFA at 1-888-827-2004 or visit [www.floridastudentfinancialaid.org/ssfad/factsheet/BF.htm](http://www.floridastudentfinancialaid.org/ssfad/factsheet/BF.htm). There is a direct link to this website on our own school site [www.winterspringshs.scps.k12.fl.us](http://www.winterspringshs.scps.k12.fl.us) under "Guidance."

To apply for Initial Eligibility the student will need to:

1. Submit a fully completed (error free) Initial Student Florida Financial Aid Application during his/her last year in high school (after October 1 and prior to graduation) by accessing [www.FloridaStudentFinancialAid.org](http://www.FloridaStudentFinancialAid.org) (select State Grants, Scholarships and Applications, then Apply Here). The application gives the Florida Department of Education (FDOE) permission to evaluate the student's high school transcript and standardized test scores for eligibility for a Bright Futures Scholarship and other state scholarships and grants;
2. Apply during his/her last year in high school, before graduation, or forfeit all future eligibility for a Bright Futures Scholarship. Application on the website, from the home or school computer, provides opportunity to initiate the application, view its status, update personal information and check application progress throughout the school year. Early application, even with only partial information to complete the application, is recommended.

Applications are available directly on the Florida State Department of Education website: [www.floridastudentfinancialaid.org/SSFAD.home/uamain.html](http://www.floridastudentfinancialaid.org/SSFAD.home/uamain.html).

Award amounts for the 2108-19 academic year will be available on the Bright Futures website in summer 2018, after the legislative session. [www.floridastudentfinancialaid.org/SSFAD/bf/awardamt.htm](http://www.floridastudentfinancialaid.org/SSFAD/bf/awardamt.htm).

### NCAA ELIGIBILITY

The Winter Springs High School Athletic Department supports and encourages student-athletes in their pursuits of athletic participation at the collegiate level. Parents and student-athletes with questions should discuss their aspirations with their head coaches, follow up with the Athletic Department, and inform their school counselors. Additionally, it is important to register online with the NCAA Eligibility Center at [www.eligibilitycenter.org](http://www.eligibilitycenter.org), as this is a critical step to ensure that potential NCAA student-athletes are meeting all of the necessary academic criteria to qualify. Please do not hesitate to seek assistance during this process. Our Athletic Department, coaches, and support staff are here to help guide you through these requirements.



## **ACADEMIC DUAL ENROLLMENT**

Seminole State College offers academic college credit to Winter Springs High School students. Students who take academic dual enrollment courses receive both high school and college credits. See your WSHS school counselor for more information.

As per the Seminole County Public Schools Student Progression Plan, "Students enrolled in an approved dual enrollment course are exempt from the payment of registration, tuition, and laboratory fees for no more than nine credit hours per semester".

## **CAREER PATHWAYS**

Career Pathways is a partnership between Seminole County Public Schools (SCPS) and Seminole State College of Florida designed to provide at no cost to the students the opportunity to get a head-start in preparing for college and a career.

How does it work? A student begins Career Pathways in high school by exploring career interests through a specified sequence of high school Career and Technical Education elective courses. Upon successful completion of the required sequence of courses (B or above average required in the courses), the student will be eligible to take a college-level assessment test. If the student passes the assessment, enrolls in Seminole State within 24 months after graduating from high school and passes at least one college credit course, he/she will receive college credit for specified courses which lead to the completion of an Associate in Science Degree or Technical Certificate. In program areas that are common to both Seminole State and Valencia College, Career Pathways credits may be awarded at either college.



*ePathways is customized learning that results in our students being prepared for 21st century globally competitive work.*

Seminole County Public Schools offers a variety of choice options to empower students to customize their educational pathway in preparation for college, careers, and citizenship. These options include Magnet Schools and Programs, Programs of Emphasis, Virtual School, After School Courses, Career and Technical Education, and Workplace Learning. Each option has a unique application process and eligibility requirements.

The following information and program descriptions acquaint students and parents with the additional high school options they can consider.



### **MAGNET SCHOOLS/PROGRAMS**

Designed around specialized themes, **magnet** programs address individual interests and provide students with educational opportunities that take them beyond traditional instructional experiences.

Acceptance into a magnet school/program is by application only. By signing the required program application, parents and students agree to commitment statements which include academic standards, attendance, conduct, and honor code.

**ELIGIBILITY:** Students must reside in Seminole County and submit a High School Magnet School/Program Application. Eligibility requirements, timelines, and the application process are described in detail on the Seminole County Public Schools Student Assignment & Program Access website: <https://www.scps.k12.fl.us/district/departments/assignment-access/>

**TRANSPORTATION:** Transportation for magnet schools and programs is provided to students living more than two miles from the school.

**FOR MORE INFORMATION:** Contact the Student Assignment & Program Access Department at 407-320-0329 or view the website at <https://www.seminoleschoolchoicesapplication.us>



## **INTERNATIONAL BACCALAUREATE DIPLOMA PROGRAM**

### **Winter Springs High School**

### **Seminole High School**

The International Baccalaureate (IB) Diploma Program is an internationally recognized, rigorous pre-university course of study that incorporates an extensive liberal arts curriculum containing humanities, social studies, world languages, math, and science. The IB program, affiliated with the International Baccalaureate Organization (IBO), is designed for highly motivated, college-bound students seeking educational challenges. The curriculum is based on international standards and examinations that are evaluated by international educators. Students zoned to Hagerty, Lake Howell, Oviedo, and Winter Springs are eligible to apply for the Winter Springs IB Program. Students zoned to Lake Brantley, Lake Mary, Lyman, and Seminole are eligible to apply for the Seminole IB Program.



## **CROOMS ACADEMY OF INFORMATION TECHNOLOGY**

**Experience IT!** Crooms Academy of Information Technology (AOIT) is Seminole County's only districtwide magnet high school. Crooms AOIT provides cutting-edge innovation in teaching and learning through a technology-enriched environment. Students engage in a rigorous and relevant curriculum that prepares them for post-secondary education with industry-validated technology

skills. Students meeting specific criteria will also have the opportunity to earn the credits required for an A.A. degree from Seminole State College as part of their high school curriculum.



## **ACADEMY OF ENGINEERING**

### **Lyman High School**

Lyman Academy of Engineering is a magnet program that prepares students to be the most innovative and productive leaders in science, technology, engineering, and mathematics (STEM) and to make meaningful contributions to our world. Lyman partners with Project Lead the Way (PLTW) to provide a rigorous, relevant STEM education through an engaging, hands on curriculum. Students are empowered to solve problems, think critically, and use creative and innovative reasoning.



## **ACADEMY OF HEALTH CAREERS**

### **Seminole High School**



The Academy of Health Careers offers a comprehensive, rigorous academic program of college preparation and uniquely relevant curriculum for students who plan to pursue a career as a healthcare professional. The academic courses are combined with the opportunity to gain the initial "building blocks" of healthcare through Health Science education. Hands-on learning opportunities enable students to preview various careers through job shadowing and clinical experiences in area hospitals, clinics, medical offices, emergency medical facilities, and veterinary healthcare sites.



## **PROGRAMS OF EMPHASIS**

A Program of Emphasis provides a structured study strand centered on a career pathway. Students who are zoned for the school may select the Program of Emphasis, and a limited number of seats in some of the programs listed in this guide may be available for 9th grade students who are not zoned to the school.

Acceptance for out-of-zone students to a Program of Emphasis is by application only. By signing the required transfer request form, parents and students agree to the commitment statements and understandings in the application.

**ELIGIBILITY:** Out-of-Zone seats may be available to incoming 9th grade students only and seats are limited. Students must reside in Seminole County and submit a Program of Emphasis Transfer Application. Eligibility requirements, timelines, and the application process are described in detail on the Seminole County Public Schools Student Assignment & Program Access website:

<https://www.scps.k12.fl.us/district/departments/assignment-access/>

Programs designated with an \* are not available as choice options and are currently only for students zoned to attend that school based upon their residence.

**TRANSPORTATION:** Transportation is NOT provided for Program of Emphasis transfers. Students may seek assistance for transportation if it is available through the Transportation Department's Ticket to Ride program. Details about this program may be found on the Student Assignment & Program Access website by clicking on the "Transportation" link.

**FOR MORE INFORMATION:** In-zone students should contact their school counselor, out-of-zone students may contact the Student Assignment & Program Access Department at 407-320-0329 or view the website at <https://www.scps.k12.fl.us/district/departments/assignment-access/>

### **HAGERTY HIGH SCHOOL**

#### **Modeling, Simulation, and Analysis Program of Emphasis**

The Modeling, Simulation and Analysis program teaches students the fundamentals of modeling and simulation, a high-demand, high-wage industry in Central Florida. This program includes industry certification.

### **LAKE BRANTLEY HIGH SCHOOL**

#### **Finance Academy Program of Emphasis**

The Finance Academy offers a curriculum comprised of finance and business technology including accounting applications and personal financial planning. This program includes industry certification.

### **LAKE HOWELL HIGH SCHOOL**

#### **Culinary Arts Program of Emphasis \***

The Culinary Arts program allows students to explore all facets of the culinary field, including entrepreneurship, in an industry-standard commercial kitchen. This program includes industry certification.

## **Cybersecurity Program of Emphasis**

The Cybersecurity program introduces and prepares students for careers in computer science and cyber-defense in multiple industries. This program includes industry certification.

## **Entrepreneurship Program of Emphasis**

The Entrepreneurship curriculum introduces the broad spectrum of business, industry, and small business initiatives. Students meeting specific criteria will also have the opportunity to earn the credits required for an A.A. degree from Seminole State College as part of their high school curriculum. This program includes industry certification.

## **LAKE MARY HIGH SCHOOL**

### **Advanced Manufacturing & Innovation Program of Emphasis**

The Advanced Manufacturing program gives students the opportunity to design and prototype innovative products using high-tech, industry standard equipment. This program includes industry certification.

### **Forensic Science & Legal Studies Program of Emphasis**

This program of emphasis includes two tracks: Forensic Science uses groundbreaking modern scientific technology in crime scene investigation, and Legal Studies teaches the foundations of our legal system. This program includes opportunities to earn dual enrollment credit.

## **LYMAN HIGH SCHOOL**

### **Teaching, learning, & leadership Program of Emphasis**

The Teaching, Learning, & Leadership program empowers students to embrace their potential future as educators and fosters their knowledge of the education profession. This program includes opportunities to earn dual enrollment credit.

## **OVIEDO HIGH SCHOOL**

### **Bioscience Technology Program of Emphasis**

The Bioscience Technology program provides preparation for the career fields of applied biology in industry, medicine, and agriculture. This program includes industry certification.

## **SEMINOLE HIGH SCHOOL**

### **Problem Solving Incubator (PSI High)**

The future of high school: PSI High is an immersive, full-time program where students form teams with their peers and community partners to solve real-world problems. In an environment that looks more like a high-tech office than a classroom, students develop their interests and skills to earn high school credit through project-based work. Our learners are the innovators of tomorrow. The ideal student for PSI High is passionate about learning and improving personally in order to make a difference globally. This program includes industry certification.

## Aviation Program of Emphasis

The Aviation Program of Emphasis provides students with experiential learning opportunities that will directly translate to a career in aviation mechanics—enabling students to work on any commercial or general aircraft. This program includes industry certification.

## WINTER SPRINGS HIGH SCHOOL

### Renewable Energy Program of Emphasis

The Renewable Energy Program allows students to study energy technologies and the advantages, disadvantages, and limitations of renewable energy resources for a sustainable future. This program includes opportunities to earn dual enrollment credit.

## SEMINOLE COUNTY VIRTUAL SCHOOL



Virtual school provides a high quality education along with flexible options to meet the demanding schedule of the 21st century student. SCPS operates two virtual schools: Seminole County Virtual School (SCVS) is a franchise of Florida Virtual School, and Seminole Academy of Digital Learning (SADL) uses curriculum created or purchased by SCPS. Seminole also contracts with two other Florida school districts for additional full-time instruction options.

High School and Middle School student choices include SCVS full-time, SCVS part-time, SADL part-time, or full-time contracted district franchise. Full-time options allow students to earn a regular Florida high school diploma. Full-time enrollment in SCVS for semester 1 will be open from April 1, 2019 through August 7, 2019. Part-time options through ePathways allow students to take a mixed schedule of face-to-face and virtual classes. The virtual classes can be taken outside of the school day or during the school day at home or at the student's school in a virtual lab. Part-time enrollment for SCVS and SADL is available throughout the school year. Additionally, the district may offer virtual course enrollment over the summer (SCVS 365).

### ***Why should students select a Seminole County Virtual School over other virtual providers?***

- schedule flexibility
- full-time local teachers
- no waiting list to start classes
- optional face-to-face sessions
- tax dollars stay in Seminole County

For more information, please visit

<http://virtualschool.scps.k12.fl.us>

### **What high school courses are available through Seminole County Virtual School?**

Courses with a \* are available at both Standard and Honors level; H = honors class

**Math:** Algebra I\*, Geometry\*, Algebra II\*, Pre-Calculus (H), Calculus (H), Liberal Arts Math I, Liberal Arts Math II, Math for College Readiness, AP Calculus AB, AP Calculus BC, AP Statistics

- Language Arts:** English I\*, English II\*, English III\*, English IV\*, English IV College Prep, AP English Language, AP English Literature
- Social Studies:** World History\*, U.S. History\*, AP U.S. History, Economics\*, AP Macroeconomics, AP Microeconomics, U.S. Government\*, AP U.S. Government, AP Human Geography, AP Psychology
- Sciences:** Biology I\*, AP Biology, Earth Space Science\*, Chemistry\*, Physics\*, Marine Science\*, Physical Science\*, Anatomy & Physiology\*, Forensic Science
- World Languages:** French I, II & III\*, Spanish I, II & III\*, Spanish for Spanish Speakers I, American Sign Language 1, 2, 3\*, 4\*
- Electives:** MANY options, including Personal Fitness/Fitness Lifestyle Design, Art, Guitar, AP Art History, Drivers Ed and much more! See website for complete list.



**2019-20 Full-Time Virtual Education Required Enrollment Notice**  
**Please contact JASON WYSONG (5-0212) with any questions**

Florida Statute 1002.45 requires school districts to provide parents with timely written notice of an annual enrollment period for full-time virtual education. Therefore, the following notice must be placed verbatim on each secondary school's registration/schedule request card for 2019-2020 and each elementary school's 2018-19 second quarter report card; the statement will automatically appear on the district template but will need to be manually added to any school-generated template:

**NOTICE:** For the 2019-20 school year, SCPS will provide full-time virtual instruction options to students in grades K-12. Enrollment will be open from Mon., April 1, 2019 to Wed., August 7, 2019. For more information, please see your school counselor or visit <http://virtuelschool.scps.k12.fl.us>

**AFTER-SCHOOL COURSES**

SCPS offers several after school Career and Technical Education (CTE) courses for high school credit. Students can attend an after school course at any of the participating high schools regardless of the high school they currently attend, as long as they have their own transportation. \*Courses typically run 3:30-5:30 Tuesdays and Thursdays unless otherwise noted. Students who would like to add an after school course to their schedule should register online:

<https://scpsafterschoolcourses1920.eventbrite.com>.



<b>COURSE NAME</b>	<b>HOSTING SCHOOL</b>	<b>COURSE CODE</b>	<b>COURSE DESCRIPTION</b>
<b>Applied Robotics</b>	<b>Lake Mary</b>	<b>9410110XLM</b>	This honors-level course provides students with the foundational knowledge and technically oriented experience in the study of the principles, applications and systems of robotics engineering and its effect upon our lives. The students in this program will build and participate in the FIRST Robotics Competition (FRC) at UCF. Students participating in the competition will be eligible for the \$80 million FIRST Scholarship Program. This course requires some Saturday participation.
<b>Automotive Collision Technology</b>	<b>Seminole High</b>	<b>9514010XSH</b>	This course covers safety, planning, preparation and painting elements of automotive repairs, with students often using their own vehicles as their hands-on project. Students are required to complete 3 online collision safety courses and will be exposed to careers within the automotive collision and repair industry while in the program. Participants should anticipate heavy lifting and high noise levels.
<b>Automotive Maintenance and Light Repair</b>	<b>Oviedo</b> <b>Seminole</b> <b>Lyman</b>	<b>504110XO</b> <b>9504110XSH</b> <b>9504110XLY</b>	This course provides students with the theory and practical knowledge of basic automotive systems and principles, including internal combustion engine theory, shop safety, tool usage, shop measurement, use of shop manuals, automotive industry history and development, and preventative maintenance.
<b>Aviation</b>	<b>Seminole</b>	<b>9540610XSH</b>	Fly into your future with a career in aviation! This state-of-the-art course is designed to prepare students for pursuit of employment or advanced training in the commercial and general aviation industry. Throughout the course, students will learn the fundamentals of flight including: meteorology, navigation systems and procedures, flight planning skills, ground operations and service duties. Students will participate in project-based learning experiences by using general shop tools and flight training materials while exploring career opportunities and the requirements of a professional aviation mechanic or pilot.

<b>COURSE NAME</b>	<b>HOSTING SCHOOL</b>	<b>COURSE CODE</b>	<b>COURSE DESCRIPTION</b>
<b>Barbering</b>	<b>Lake Howell</b>	<b>8757110XLH</b>	This course will introduce students to shampooing and conditioning, trimming and shaping hair using clippers, shears and razors. Students who are interested in expressing themselves creatively through shaping and cutting hair while working collaboratively with others will thrive in this course at Lake Howell High School. *This course meets Mondays and Wednesdays 3:30-5:30
<b>Cosmetology</b>	<b>Lake Howell</b>  <b>Lake Brantley</b>	<b>8757210XLB &amp; 8905120XLH</b>  <b>8757210XLH &amp; 8905120XLB</b>	The ideal candidate for the Cosmetology program has a passion for making people feel and look good. Students will practice performing services of the hair, skin, and nails throughout this course. Upon completion of these courses, students will have up to 160 hours towards the state requirement for licensing.
<b>Interior Design</b>	<b>Oviedo</b>  <b>Lake Brantley</b>	<b>8506405XO</b>  <b>8506405XLB</b>	From the clothes we wear to the homes we live in, fashion and design are all around us. In this program students will gain an understanding of the elements and principles of design and will learn to make appropriate selections of color, fabrics, furnishings, lighting and furniture.
<b>Technical Design</b>	<b>Lake Mary</b>	<b>8401010XLM</b>	This honors-level course focuses on Engineering, Architecture, 3D Modeling & 3D Printing. First Semester is an in-depth introduction to Technical Drafting & Computer-Aided Design. Students will learn the basics of Autodesk AutoCAD to complete their projects. Second Semester, students will choose to work in either 3D Modeling, Architecture, or a combination of both. Students who choose to dive deeper into 3D Modeling will have the opportunity to print their projects on a Mojo or Dimension 1200 3D printer. Those focused on Architecture will work on an in-depth Architecture project such as developing a set of plans of their dream house. All students will take the AutoCAD Certification Exam.

\* Please note that courses are subject to cancellation due to low enrollment or change in instructor availability.

## ACADEMY OF CONSTRUCTION TECHNOLOGIES



Don't leave high school with just a diploma—leave with a JOB! The Academy of Construction Technologies (ACT) develops a well-trained workforce in the construction industry by integrating academics and a paid work-site experience when available. ACT offers students in grades 11 and 12 the opportunity to begin a career in high school in building trades and construction design technology, which is offered at Lake Brantley HS, Lake Mary HS, Lyman HS, and Seminole HS. Students must be on track for graduation and have a 2.0 GPA to participate.

## WORKPLACE LEARNING – INTERNSHIPS

Students in grades 11 and 12 may have the opportunity to participate in a paid or unpaid internship in some of our region's most in-demand fields. Academic credit will be earned upon successful completion of 133 hours of work along with other required assignments. Students can utilize flexible scheduling to work before, during, or after the school day to gain exposure to real-world working conditions. For more information about workplace learning opportunities, visit the ePathways website: <https://www.scps.k12.fl.us/district/departments/epathways/workplace-learning/>

# WINTER SPRINGS HIGH SCHOOL INTERNATIONAL BACCALAUREATE DP PROGRAMME

The International Baccalaureate (IB) Program is unique in that it provides an interdisciplinary liberal arts education leading to a diploma which is recognized throughout the world. Students pursue a prescribed curriculum and teachers provide interdisciplinary instruction and assessments whereby students study common topics, processes and materials across subject areas. The curriculum follows the objectives, topics and materials recommended by the International Baccalaureate Curriculum Board in Cardiff, Wales. The purpose of the program is for students to have the opportunity for advanced study and to earn an IB diploma.

The IB Program is designed for academically able and highly motivated students. Students who enroll in the IB Program are regular members of the student body and are active participants in extracurricular activities and athletics.

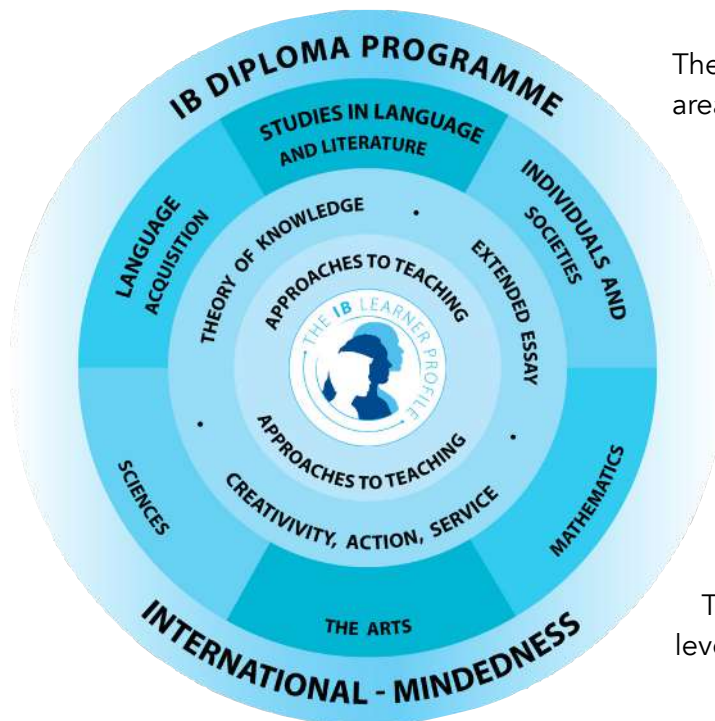
## IB MISSION STATEMENT

*The International Baccalaureate aims to develop inquiring, knowledgeable and caring young people who help to create a better and more peaceful world through intercultural understanding and respect.*

*To this end the organization works with schools, governments and international organizations to develop challenging programmes of international education and rigorous assessment.*

*These programmes encourage students across the world to become active, compassionate and lifelong learners who understand that other people, with their differences, can also be right.*

## GRADUATION REQUIREMENTS



The IB curriculum is reflected by a circle with six academic areas surrounding the three core requirements.

Over the course of the DP programme, students:

- Study six subjects chosen from the six subject groups
- Complete an extended essay
- Follow a theory of knowledge course (TOK)
- Participate in creativity, activity, service (CAS)

Traditionally:

Three of the six subjects are studied at higher level (courses representing 240 teaching hours)

The remaining three subjects are studied at standard level (courses representing 150 teaching hours)



<b>SUBJECT</b>	<b>26-CREDIT PROGRAM</b>
English/ Language Arts (ELA)	4 credits with major concentration in composition, reading for information, and literature (must attain passing scores on the statewide, standardized assessment as identified for individual cohort groups) Two courses must be in IB English.
Mathematics	4 credits Math, one of which must be Algebra 1 and one of which must be Geometry (Algebra 1 EOC constitutes 30% of the final course grade; student must pass the Algebra 1 EOC to earn a standard diploma; Geometry EOC constitutes 30% of the final course grade) One course must be a two-year IB math course.
Science	3 credits to include 1 credit in Biology (Biology EOC constitutes 30% of the final course grade) One course must be in IB science.
Social Studies	4 credits to include Theory of Knowledge
World Languages	3 credits, one course to be in IB world language.
Fine and Performing Arts, Speech and Debate, or Practical Arts	Not Required
Physical Education	Not Required
Electives and other requirements	7 credits in electives and 1 credit in an IB 6th area; Complete Creativity, Activity and Service. Submit an acceptable Extended Essay. Sit for Required examinations in six subjects.
Industry Certification	Not required
Total	26 credits
Grade Point Average (GPA)	Cumulative GPA of 2.0 on a 4.0 scale



<b>GRADE</b>	<b>GROUP 1: LANGUAGE A</b>	<b>GROUP 2: LANGUAGE B</b>	<b>GROUP 3: INDIVIDUALS &amp; SOCIETIES</b>	<b>GROUP 4: EXPERIMENTAL SCIENCES</b>	<b>GROUP 5: MATHEMATICS</b>	<b>GROUP 6: ARTS</b>
11 TOK:  Sem 1:____ Sem 2:____	English Literature 3  Sem 1:____ Sem 2:____	* _____  Sem 1:____ Sem 2:____	History of the Americas  Sem 1:____ Sem 2:____	* _____  Sem 1:____ Sem 2:____	* _____  Sem 1:____ Sem 2:____	* _____  Sem 1:____ Sem 2:____
12 TOK:  Sem 1:____ Sem 2:____	English Literature 4  Sem 1:____ Sem 2:____	* _____ OR Elective:____ Sem 1:____ Sem 2:____	World History  Sem 1:____ Sem 2:____	* _____ OR Elective:____ Sem 1:____ Sem 2:____	* _____  Sem 1:____ Sem 2:____	* _____ OR Elective:____ Sem 1:____ Sem 2:____
SL or HL	HL  Score:_____ Date:_____	SL OR HL  Score:_____ Date:_____	SL OR HL  Score:_____ Date:_____	SL OR HL  Score:_____ Date:_____	SL OR HL  Score:_____ Date:_____	SL OR HL  Score:_____ Date:_____

Extended Essay/Theory of Knowledge Bonus Points: \_\_\_\_\_ CAS Completed: \_\_\_\_\_

Per the IB General Regulations Diploma Programme, the IB Diploma will be awarded to a candidate whose total score is 24 points or higher, provided all the following requirements have been met:

- Numeric grades have been awarded in all six subjects registered for the IB Diploma.
- All CAS requirements have been met.
- Grades A (Highest) to D (Lowest) have been awarded for Theory of Knowledge and Extended Essay.
- There is no „N“ awarded for Theory of Knowledge, Extended Essay or for a contributing subject.
- There is no grade 1 in any subject. There are no more than two grade 2s awarded. There are no more than three grades 3 or below awarded.
- The candidate has gained 12 points or more on HL subjects (for candidates who register for four HL subjects, the three highest grades count).
- The candidate has gained 9 points or more on SL subjects (candidates who register for two SL subjects must gain at least 5 points at SL).
- The candidate has not received a penalty for academic misconduct from the Final Award Committee.



CURRICULUM AREA	WSHS IB CANDIDACY TRACK 9TH	WSHS IB CANDIDACY TRACK 10TH
<b>Group 1:</b> Language A	Pre IB English I Honors 1001800	AP English Language 1001420
<b>Group 2:</b> Language B  Spanish          or  Latin	Pre IB Spanish I 0708800  or  Pre IB Spanish 2                      0708810	Pre IB Spanish 2 0708810  or  Pre IB Spanish 3 0708820
	Pre IB Latin I 0706800	Pre IB Latin 2 0706810
<b>Group 3:</b>  Individual and Societies	AP Human Geography 2103400	AP World History 2109420





IB DIPLOMA PROGRAMME 11TH	IB DIPLOMA PROGRAMME 12TH	TEST LEVEL AND DATE
IB English Literature 3 HL 1001820	IB English Literature 4 HL 1001830	HL May Grade 12
IB Ab initio Spanish 1 SL 0708891	IB Ab initio Spanish 2 SL 0708892	SL End of ab initio 2 or IB Spanish 5 HL End of IB Spanish 6
IB Spanish 5 SL 0708840	Elective	
IB Spanish 4 HL 0708830	IB Spanish 6 HL 0708865	
IB Latin 4 0706825	IB Latin 5 SL or IB Latin 6 HL 0706840 0706845	SL or HL May Grade 12
(Prerequisite: Chemistry) IB Environmental System 2 SL 2001375 <b>or</b> <b>Elective</b>	(Prerequisite: Chemistry) IB Environmental System 2 SL 2001375 <b>or</b> <b>Elective</b>	Eviornmental Systems and Psychology: <b>SL-Test after 1 year</b>  HL May Grade 12
IB Phychology 2 SL 2107810 <b>or</b> <b>Elective</b>	IB Phychology 2 SL 2107810 <b>or</b> <b>Elective</b>	
IB History of the Americas HL 2100800	IB History of the Americas HL 2100800	



CURRICULUM AREA	WSHS IB CANDIDACY TRACK 9TH	WSHS IB CANDIDACY TRACK 10TH
<p><b>Group 4:</b> Experimental Sciences</p> <p>IB track:</p> <p>Due to class size minimum, some courses may not be offered every year based on student interest.</p>	<p>Pre IB Biology 2000800</p> <p>or</p> <p>AP Biology 2000340 (Prerequisite: Algebra 1)</p> <p>or</p> <p>Pre IB Chemistry 2003800 (Prerequisite: Biology)</p>	<p>Pre IB Chemistry 2003800 (Prerequisite: Biology)</p> <p>or</p> <p>Pre IB Physics 1 2003836 (Prerequisite: Biology. Algebra 2 concurrent or completed)</p> <p>or</p> <p>AP Physics 1 2003421 (Prerequisite: Biology. Algebra 2 concurrent or completed)</p>



IB DIPLOMA PROGRAMME 11TH	IB DIPLOMA PROGRAMME 12TH	TEST LEVEL AND DATE
(Prerequisite: Chemistry) IB Environmental System 2 SL 2001375 <b>or</b> <b>Elective</b>	(Prerequisite: Chemistry) IB Environmental System 2 SL 2001375 <b>or</b> <b>Elective</b>	Eviornmental Systems and Biology: <b>SL-Test after 1 year</b>
(Prerequisite: Chemistry) IB Biology 2 SL 2000810 <b>or</b> <b>Elective</b>	(Prerequisite: Chemistry) IB Biology 2 SL 2000810 <b>or</b> <b>Elective</b>	Biology HL;Chemistry and Physics: SL & HL May Grade 12
(Prerequisite: Chemistry) IB Biology 2 SL 2000810	(Prerequisite: Chemistry) IB Biology 3 HL 2000820	
(Prerequisite: Chemistry or Physics) IB Chemistry 1 SL 2003805	(Prerequisite: Chemistry or Physics) IB Chemistry 2 SL 2003810	
(Prerequisite: Biology. Recommended Physics) IB Chemistry 2 SL 2003810	(Prerequisite: Biology. Recommended Physics) IB Chemistry 3 HL 2003820	
(Prerequisite: Biology. Recommended Physics) IB Physics 1 SL 2003840	(Prerequisite: Biology. Recommended Physics) IB Physics 2 SL 2003845	
(Prerequisite: Physics. Recommended AP Physics 1) IB Physics 2 HL 2003845	(Prerequisite: Physics. Recommended AP Physics 1) IB Physics 2 HL 2003850	



CURRICULUM AREA	WSHS IB CANDIDACY TRACK 9TH	WSHS IB CANDIDACY TRACK 10TH
<p><b>Group 5: Mathematics</b></p> <p>Students must complete Geometry Honors and Algebra 2 Honors by the start of their 11th grade year.</p> <p>Students wishing to participate in IB Math HL should complete Algebra 2 Honors by the start of their 10th grade year.</p>	<p>Algebra 1 Honors 1200320 or Geometry Honors 1206320 or Algebra 2 Honors 1200340 or Pre-Calculus Honors 1202340</p>	<p>Geometry Honors Algebra 2 Honors 1206320/1200340 or Algebra 2 Honors 1200340 or AP Statistics 1210320 or Pre-Calculus 1202340 or AP Calculus AB 1202310</p>
<p><b>Group 6: Arts/Electives</b></p> <p>Students may opt to study an additional science, indiculas and societies or language course instead of a course in the arts.</p>		
<p><b>Theory of Knowledge</b></p>	<p>Elective</p>	<p>Elective</p>



IB DIPLOMA PROGRAMME 11TH	IB DIPLOMA PROGRAMME 12TH	TEST LEVEL AND DATE
Mathematics: Applications and Interpretations		SL or HL May Grade 12
IB Math Studies SL 1209800 or IB Statistics & Probability HL 1210323	IB Statistics SL 1210310 or IB Discrete Math HL 1210324	
Mathematics: Analysis and Approaches		
IB Pre-Calculus SL 1202375 or IB math HL 1209830	IB Calculus & Desc Stats SL 1202810 or IB Advanced Calculus 1 HL 1202830	
IB Music 2 SL 1300818  <b>or</b> <b>Elective</b>	IB Music 2 SL 1300818  <b>or</b> <b>Elective</b>	SL - Test after 1 year
IB Theatre 2 HL 0400820	IB Theatre 3 HL 0400830	HL May Grade 12
Theory of Knowledge 1 0900800	Theory of Knowledge 2 0900810	TOK Oral: Grade11 TOK Paper: Grade



## REQUIRED AND ELECTIVE COURSES LISTINGS BY IB GROUPS, PREREQUISITES AND GRADE LEVELS

\* Denotes additional weighting of .5 in GPA

\*\* Denotes additional weighting of 1.0 in GPA

<u>NUMBER</u>	<u>COURSE TITLE</u>	<u>PREREQUISITE</u>	<u>CREDIT</u>	<u>GRADE LEVEL</u>
<b>LANGUAGE ARTS (Language A - Group 1)</b>				
1001800	*English 1 - Pre-IB	IB Acceptance	1	9
1001420	**AP English Lang - Pre-IB	English 1-Pre-IB	1	10
<b>1001820</b>	**IB English Literature 3 (HL)	AP English Lang	1	11
<b>1001830</b>	**IB English Literature 4 (HL)	IB English Lit 3	1	12
<b>WORLD LANGUAGES (Language B - Group 2)</b>				
0706800	*Latin 1- Pre-IB	IB Acceptance	1	9
0706810	*Latin 2- Pre-IB	Latin 1- Pre-IB	1	10
0706825	**IB Latin 4	Latin 2- Pre-IB	1	11
0706840	**IB Latin 5 (SL)	IB Latin 4	1	12
0706845	**IB Latin 6 (HL)	IB Latin 4	1	12
0708800	*Spanish 1- Pre-IB	IB Acceptance	1	9
0708810	*Spanish 2 - Pre-IB	Spanish 1 Pre-IB	1	9-10
0708820	*Spanish 3-Pre-IB	Spanish 2 Pre-IB	1	9-10
0708891	**IB Ab initio Spanish 1	IB Acceptance	1	11
0708830	**IB Spanish 4 (HL)	Spanish 2 or 3 Pre-IB	1	11
0708840	**IB Spanish 5 (SL)	Spanish 2 or 3 Pre-IB	1	11 or 12
0708892	**IB Ab initio Spanish 2	IB Ab initio Spanish 1	1	12
0708865	**IB Spanish 6 (HL)	IB Spanish 4	1	12
<b>INDIVIDUALS AND SOCIETIES ( Group 3)</b>				
2103400	**AP Human Geography	IB Acceptance	1	9
2109420	**AP World History	IB Acceptance	1	10
2001375	**IB Environmental Systems 2 (SL)	IB Acceptance and Chemistry	1	11 or 12
2107810	**IB Psychology 2 (SL)	IB Acceptance	1	11 or 12
2100800	**IB History of the Americas (HL)	IB Acceptance	1	11
2109800	**IB World History (HL)	IB History of the Americas	1	12



<u>NUMBER</u>	<u>COURSE TITLE</u>	<u>PREREQUISITE</u>	<u>CREDIT</u>	<u>GRADE LEVEL</u>
<b>SCIENCE (Group 4)</b>				
2000800	*Biology 1- Pre-IB	IB Acceptance	1	9
2000340	**AP Biology- Pre-IB	IB Acceptance & Algebra 1	1	9
2003800	*Chemistry 1 - Pre-IB	IB Acceptance & Biology 1	1	9 or 10
2003370	**AP Chemistry - Pre-IB	IB Acceptance, Biology & Algebra 2 (concurrent or completed)	1	10
2003421	** AP Physics 1 - Pre-IB	IB Acceptance, Biology & Algebra 2 (concurrent or completed)	1	10
2003805	**IB Chemistry 1(SL)	Chemistry or Physics	1	11
2003840	**IB Physics 1 (SL)	Physics	1	11
2000810	**IB Biology 2 (SL or HL)	Chemistry	1	11 (H or SL), 12 (SL)
2001375	**IB Environmental Systems 2 (SL)	Chemistry	1	11 or 12
2003810	**IB Chemistry 2 (SL OR HL)	Chemistry or Physics (HL), IB Chemistry 1 (SL)	1	11 (HL), 12 (SL)
2000820	**IB Biology 3 (HL)	IB Biology 2		12
2003845	**IB Physics 2 (SL OR HL)	Physics (HL), IB Physics 1 (SL)	1	11 (HL), 12 (SL)
2003820	**IB Chemistry 3 (HL)	IB Chemistry 2	1	12
2003850	**IB Physics 3 (HL)	IB Physics 2	1	12

### **MATHEMATICS (Group 5)**

1200320	*Algebra 1 Honors		1	9
1206320	*Geometry Honors	Algebra 1	1	9 or 10
1200340	*Algebra 2 Honors	Geometry Honors	1	9 or 10
1202340	*Pre-Calculus Honors	Algebra 1 Honors & Geometry Honors	1	9 or 10
1209800	**IB Math Studies 1 (SL)	Algebra 2 Honors	1	11
1210323	**IB Statistics & Probability (HL)	Algebra 2 Honors	1	11
1202375	**IB Pre-Calculus (SL)	Algebra 2 Honors	1	11
1209830	**IB Math HL	Pre-Calculus	1	11
1210310	**IB Statistics (SL)	IB Math Studies	1	12
1210324	**IB Discrete Math (HL)	IB Statistics & Probability	1	12
1202810	**IB Calculus & Descriptive Stats (SL)	IB Pre-Calculus	1	12
1202830	**IB Advanced Calculus 1 (HL)	IB Math HL	1	12

**ARTS (Group 6) - Students may opt to study an additional science, individuals and societies or world language course instead of a course in the arts.**

1300818	**IB Music 2 (SL)	IB Acceptance & Band/Chorus	1	11 or 12
0400820	**IB Theatre 1 (HL)	IB Acceptance and Theatre	1	11
0400830	**IB Theatre 2 (HL)	IB Theatre 1	1	12

### **THEORY OF KNOWLEDGE**

0900800	**Theory of Knowledge 1	IB Acceptance	1	11
0900810	**Theory of Knowledge 2	Theory of Knowledge 1	1	12

**IB Students must also complete an extended essay and complete creative/action/service (CAS) experiences, after the sophomore year of the program is completed.**

Courses may not be offered if minimum student enrollment is not met or if a certified teacher is unavailable.





## LANGUAGE ARTS (Language A - Group 1)

The courses are built on the assumption that literature is concerned with our conceptions, interpretations and experiences of the world. The study of literature can therefore be seen as an exploration of the way it represents the complex pursuits, anxieties, joys and fears to which human beings are exposed in the daily business of living. It enables an exploration of one of the more enduring fields of human creativity, and provides opportunities for encouraging independent, original, critical and clear thinking. It also promotes respect for the imagination and a perceptive approach to the understanding and interpretation of literary works.

**1001820 IB ENGLISH LITERATURE 3 (HL)**  
Offered: Grade 11  
Length: Year  
Prerequisite: AP English Language

This course serves as the year one of two preparations for the English Literature HL Test.

**1001830 IB ENGLISH LITERATURE 4 (HL)**  
Offered: Grade 12  
Length: Year  
Prerequisite: IB English Literature 3

This course serves as the year two of two preparations for the English Literature HL Test. Students are required to take the IB Exam. Students who do not take the IB exam will incur International Baccalaureate Assessment fees.

## WORLD LANGUAGES (Language B - Group 2)

### Classical Languages: Latin

Through this course, students will learn to translate Latin works accurately and sensitively. Students will also study different genres of classical texts, examining the ideas in these works and their artistry within their historical, political and cultural contexts.

The SL and HL syllabus requirements share elements, including authors and options. The difference between SL and HL is reflected in both the breadth of study and in the level of knowledge and skills expected at assessment, especially in paper 2. In addition, HL students are required to research additional sources

for their individual study. At the SL and HL levels, knowledge of the historical, political and cultural background, which is essential for the understanding or appreciation of the texts, will be expected. HL candidates will also be required to demonstrate knowledge and understanding of texts within their broader historical, political and cultural contexts.

**0706825 IB LATIN 4**  
Offered: Grade 11  
Length: Year  
Prerequisite: Latin 2

This course serves as the year one of two preparations for the Latin SL and HL Test.

**0706840 IB LATIN 5 (SL)**  
Offered: Grade 12  
Length: Year  
Prerequisite: IB Latin 4

This course serves as the year two of two preparations for the Latin SL Test. Students are required to take the IB Exam. Students who do not take the IB Exam will incur International Baccalaureate Assessment fees.

**0706845 IB LATIN 6 (HL)**  
Offered: Grade 12  
Length: Year  
Prerequisite: IB Latin 4

This course serves as the year two of two preparations for the Latin HL Test. Students are required to take the IB Exam. Students who do not take the IB Exam will incur International Baccalaureate Assessment fees.

## SPANISH

Ab initio:

Spanish ab initio is a language acquisition course designed for students with no prior experience of the Spanish, or for those students with very limited previous exposure. It should be noted that Spanish ab initio is offered at SL only. In the Spanish ab initio course, students develop the ability to communicate in the target Spanish through the study of language, themes and texts. In doing so, they also develop conceptual understandings of how language works. Communication is evidenced through receptive, productive and interactive skills across a range of contexts and purposes that are appropriate to the level of the course.



**0708891 IB AB INITIO SPANISH 1**  
Offered: Grade 11  
Length: Year  
Prerequisite: IB Acceptance

This course serves as the year one of two preparations for the Spanish Ab initio SL Test.

**0708892 IB AB INITIO SPANISH 2**  
Offered: Grade 12  
Length: Year  
Prerequisite: IB Ab initio Spanish 1

This course serves as the year two of two preparations for the Spanish Ab initio SL Test. Students are required to take the IB Exam. Students who do not take the IB Exam will incur International Baccalaureate Assessment fees.

### **SL AND HL:**

Spanish Language B is a language acquisition course designed for students with some previous experience of the Spanish. In the Spanish Language B course, students further develop their ability to communicate in the Spanish through the study of language, themes and texts. In doing so, they also develop conceptual understanding of how language works, as appropriate to the level of the course. At both levels of Spanish Language B (SL and HL), students learn to communicate in Spanish in familiar and unfamiliar contexts. They describe situations, narrate events, make comparisons, explain problems, and state and support their personal opinions on a variety of topics relating to course content. The study of two literary works originally written in Spanish is required only at Spanish Language B HL. The distinction between Spanish Language B SL and HL can also be seen in the level of competency the student is expected to develop in the receptive, productive and interactive skills.

**0708840 IB SPANISH 5 (SL)**  
Offered: Grade 11,12  
Length: Year  
Prerequisite: Spanish 2

This course is in completed in one year. Students are required to take the IB Exam. Students who do not take the IB Exam will incur International Baccalaureate Assessment fees.

**0708830 IB SPANISH 4 (HL)**  
Offered: Grade 11  
Length: Year  
Prerequisite: Spanish 2

This course serves as the year one of two preparations for the Spanish HL Test.

**0708865 IB SPANISH 6 (HL)**  
Offered: Grade 12  
Length: Year  
Prerequisite: IB Spanish 4

This course serves as the year two of two preparations for the Spanish HL Test. Students are required to take the IB Exam. Students who do not take the IB Exam will incur International Baccalaureate Assessment fees.

### **SOCIAL STUDIES (Individuals and Societies - Group 3)**

#### **HISTORY:**

**2100800 IB HISTORY OF THE AMERICAS**  
Offered: Grade 11  
Length: Year  
Prerequisite: IB Acceptance

This course serves as the year one of two preparations for the Individuals and Societies HL Test. This course will provide an opportunity to acquire a comprehensive understanding of the major themes that give meaning to the historical development of the nations of the Western Hemisphere by achieving an understanding of the historical method, the process of inquiry, historical reasoning and interpretation, and change. The content will include, but not be limited to, an understanding of the geohistoric development in time-space, that the North and South American land mass had on national cultural development, an analysis of the significant turning points and trends in the development of hemispheric culture and institutions, a comparison and evaluation of the development of Anglo-American and Latin American ideals and characteristics, comparisons of technology changes and population shifts in Anglo-America and Latin America, and an evaluation of those significant domestic and foreign issues facing the nations in the Western Hemisphere.



**2109800 IB WORLD HISTORY**

Offered: Grade 12  
 Length: Year  
 Prerequisite: IB History of The Americas

This course serves as the year two of two preparations for the Individuals and Societies HL Test. As such, this course will provide academic rigor and relevance through a comprehensive curriculum based on the Next Generation Sunshine State Standards and standards taught with reference to the unique facets of the IB. These facets include interrelatedness of subject areas, a holistic view of knowledge, intercultural awareness, embracing international issues, and communication as fundamental to learning. Instructional design must provide students with values and opportunities that enable them to develop respect for others and an appreciation of similarities and differences. Learning how to learn and how to critically evaluate information is as important as the content of the disciplines themselves.

**ENVIRONMENTAL SYSTEMS AND SOCIETIES**

This is a rigorous class designed to provide students with an understanding of the environment and human interactions with it. Environmental Systems is a true interdisciplinary class and students will be expected to demonstrate proficiency in Biology, Chemistry, Physics, Statistics, and geography among other disciplines. Through a systems-centered approach, students will investigate environmental issues using scientific inquiry in labs and projects, read scientific novels, and participate in college-level lectures. This class can count for either Group 3 or Group 4.

**2001375 IB ENVIRONMENTAL SYSTEMS & SOCIETIES 2 (SL)**

Offered: Grade 11-12  
 Length: Year  
 Prerequisite: IB Acceptance

Students are required to take the IB Exam. Students who do not take the IB Exam will incur International Baccalaureate Assessment fees.

**PSYCHOLOGY**

This course provides students with the opportunity to acquire an understanding of research methodology, as applied to the study of human behavior. Content covered will include human growth and development, self-concept development, adjustment, motivation and desire, intelligence, human interaction, conditioning and learning, attitudes and social influence, memory, personality, behavior, emotional frustration, abnormal behavior, conformity, autonomy, alienation, stress, and mental health.

**2107810 IB PSYCHOLOGY 2 (SL)**

Offered: Grade 11 or 12  
 Length: Year  
 Prerequisite: IB Acceptance

Students are required to take the IB Exam. Students who do not take the IB Exam will incur International Baccalaureate Assessment fees.

**SCIENCE****(Experimental Sciences - Group 4)**

- Due to class size minimum, some courses may not be offered every year based on student interest.

**BIOLOGY**

This rigorous course provides a study of the facts, principles and processes of biology and the collection, interpretation, and formulation of hypotheses from available data. Focus on enriched laboratory activities is integral to this course. Contemporary issues such as feeding the world's population, genetic engineering, population dynamics, etc., are included for critical current and future decision-making. Some preserved animal studies may be a part of this course.

**2000810 IB BIOLOGY 2 (SL AND HL)**

Offered: Grade 11 (HL or SL),  
 Grade 12 (SL only)  
 Length: Year  
 Prerequisite: Biology 1 Honors

This course serves as the year one of two preparations for the Biology HL Test or the one year preparation for Biology SL. Students are required to take the SL IB Exam. Students who do not take the IB Exam will incur International Baccalaureate Assessment fees.



**2000820 IB BIOLOGY 3 (HL)**  
Offered: Grade 12  
Length: Year  
Prerequisite: IB Biology 2

This course serves as the year two of two preparations for the Biology HL Test. Students are required to take the IB Exam. Students who do not take the IB Exam will incur International Baccalaureate Assessment fees.

### **ENVIRONMENTAL SYSTEMS AND SOCIETIES**

This is a rigorous class designed to provide students with an understanding of the environment and human interactions with it. Environmental Systems is a true interdisciplinary class and students will be expected to demonstrate proficiency in Biology, Chemistry, Physics, Statistics, and geography among other disciplines. Through a systems-centered approach, students will investigate environmental issues using scientific inquiry in labs and projects, read scientific novels, and participate in college-level lectures.

**2001375 IB ENVIRONMENTAL SYSTEMS & SOCIETIES 2 (SL)**  
Offered: Grade 11-12  
Length: Year  
Prerequisite: IB Acceptance and Chemistry

Students are required to take the IB Exam. Students who do not take the IB Exam will incur International Baccalaureate Assessment fees.

### **CHEMISTRY:**

This course provides a rigorous study of the composition, properties and changes associated with matter. Content includes chemical behavior, inorganic and organic chemistry, atomic and kinetic theories, chemical calculations, and effective use of chemical apparatus. Safety and challenging chemical laboratory investigations which manipulate qualitative and quantitative data are integral to the course.

**2003805 IB CHEMISTRY 1 (SL)**  
Offered: Grade 11  
Length: Year  
Prerequisite: Chemistry or Physics

This course serves as the year one of two preparations for the Chemistry SL Test.

**2003810 IB CHEMISTRY 2 (SL AND HL)**  
Offered: Grade 11 (HL), 12 (SL)  
Length: Year  
Prerequisite: Chemistry or Physics (HL); IB Chemistry 1 (SL)

This course serves as the year two of two preparations for the Chemistry SL Test and year one of two for the Chemistry HL Test. SL students are required to take the SL IB Exam. Students who do not take the IB Exam will incur International Baccalaureate Assessment fees.

**2003820 IB CHEMISTRY 3 (HL)**  
Offered: Grade 12  
Length: Year  
Prerequisite: IB Chemistry 2 (HL)

This course serves as the year two of two preparations for the Chemistry HL Test. Students are required to take the HL IB Exam. Students who do not take the IB Exam will incur International Baccalaureate Assessment fees.

### **PHYSICS:**

The purpose of this course is to provide an algebra-based overview of physics according to the IB syllabus guide. Content should include, but not be limited to, mechanics, thermodynamics, waves, electricity and magnetism, modern physics, and relativity. Laboratory investigations involve application of the scientific method, quantitative relationships, proper use of laboratory apparatus, and safety precautions. Students will be required to take the IB Physics Standard Level Exam upon completion of the course.

**2003840 IB PHYSICS 1 (SL)**  
Offered: Grade 11  
Length: Year  
Prerequisite: Biology & Physics (recommended)

This course serves as the year one of two preparations for the Physics SL Test.



**2003845 IB PHYSICS 2 (SL AND HL)**  
Offered: Grade 11 (HL), 12(SL)  
Length: Year  
Prerequisite: Biology & Physics  
(recommended) OR IB Physics 1

This course serves as the year two of two preparations for the Physics SL Test and year one of two for the Physics HL Test. Students are required to take the SL IB Exam. Students who do not take the IB Exam will incur International Baccalaureate Assessment fees.

**2003850 IB PHYSICS 3 (HL)**  
Offered: Grade 12  
Length: Year  
Prerequisite: IB Physics 2

This course serves as the year two of two preparations for the Physics HL Test. Students are required to take the IB Exam. Students who do not take the IB Exam will incur International Baccalaureate Assessment fees.

## **MATHEMATICS (Group 5)**

### **MATHEMATICS: APPLICATIONS AND INTERPRETATION**

The purpose of this course is to introduce students to the basic concepts and techniques associated with the graphing calculator, number sense, algebraic concepts, sets, logic, probability, functions, geometry, trigonometry, financial mathematics, and introductory differential calculus. It is expected that extensive use will be made of graphing calculators in both the development and the application of these topics. Access to computers is recommended.

**1209800 IB MATH STUDIES 1 (SL)**  
Offered: Grade 11  
Length: Year  
Prerequisite: Algebra 2 Honors

This course serves as the year one of two preparations for the SL Test.

**1210310 IB STATISTICS (SL)**  
Offered: Grade 12  
Length: Year  
Prerequisite: IB Math Studies 1

This course serves as the year two of two preparations for the SL Test. Students are required to take the IB Exam. Students who do not take the IB Exam will incur International Baccalaureate Assessment fees.

**1210323 IB STATISTICS AND PROBABILITY (HL)**  
Offered: Grade 11  
Length: Year  
Prerequisite: Algebra 2 Honors

This course serves as the year one of two preparations for the HL Test.

**1210324 IB DISCRETE MATH (HL)**  
Offered: Grade 12  
Length: Year  
Prerequisite: IB Statistics & Probability

This course serves as the year two of two preparations for the HL Test. Students are required to take the IB Exam. Students who do not take the IB Exam will incur International Baccalaureate Assessment fees.

### **MATHEMATICS: ANALYSIS AND APPROACHES**

The purpose of this course is to introduce students to the basic concepts and techniques associated with work in algebraic concepts, functions and equations, circular functions and trigonometry, matrices, and vectors. It is expected that extensive use will be made of graphing calculators in both the development and the application of these topics. Access to computers is recommended. This course will include internally assessed and externally moderated portfolio requirements as well as periodic comprehensive reviews in preparation for the International Baccalaureate Examination.

**1202375 IB PRE-CALCULUS (SL)**  
Offered: Grade 11  
Length: Year  
Prerequisite: Algebra 2 Honors

This course serves as the year one of two preparations for the SL Test.

**1202810 IB CALCULUS and DESCRIPTIVE STATISTICS (SL)**  
Offered: Grade 12  
Length: Year  
Prerequisite: IB Pre-Calculus

This course serves as the year two of two preparations for the SL Test. Students are required to take the IB Exam. Students who do not take the IB Exam will incur International Baccalaureate Assessment fees.





**1209830 IB MATH (HL)**  
Offered: Grade 11  
Length: Year  
Prerequisite: Pre-Calculus

This course serves as the year one of two preparations for the HL Test.

**1202830 IB ADVANCED CALCULUS 1 (HL)**  
Offered: Grade 12  
Length: Year  
Prerequisite: IB Math HL

This course serves as the year two of two preparations for the HL Test. Students are required to take the IB Exam. Students who do not take the IB Exam will incur International Baccalaureate Assessment fees.

### **ARTS: (Group 6)**

- Students may opt to study an additional science, individuals and societies or world language course instead of a course in the arts.

**1300818 IB MUSIC 2 (SL)**  
Offered: Grade 11 or 12  
Length: Year  
Prerequisite: IB Acceptance

The purpose of this course is to further the IB students' knowledge of the rudiments of music and its study, using the techniques of listening, performing and composing implemented through use of keyboard, computer-assisted instruction and/or other performance media. This course will further develop a historical perspective of music from the Plainsong Era to present day, develop an awareness of the multicultural aspect of music, and further develop social skills and further formal study of music through the conducting and directing of ensembles. This course will also prepare the IB student for further the formal study of the science of music in higher education. Students are required to take the IB Exam. Students who do not take the IB Exam will incur International Baccalaureate Assessment fees.

**0400820/ 0400830 THEATRE 2 & 3 (HL)**  
Offered: Grade 11 and 12  
Length: 2 Years  
Prerequisite: IB Acceptance

The IB Diploma Programme theatre course is a multifaceted theatre-making course of study. It gives students the opportunity to make theatre as creators, designers, directors and performers. It emphasizes the importance of working both individually and collaboratively as part of an ensemble. It offers the opportunity to engage actively in the creative process, transforming ideas into action as inquisitive and productive artists. Students experience the course from contrasting artistic perspectives. They learn to apply research and theory to inform and to contextualize their work. The theatre course encourages students to appreciate that through the processes of researching, creating, preparing, presenting and critically reflecting on theatre, as participants and audience members, they gain a richer understanding of themselves, their community and the world. Through the study of theatre, students become aware of their own personal and cultural perspectives, developing an appreciation of the diversity of theatre practices, their processes and their modes of presentation. It enables students to discover and engage with different forms of theatre across time, place and culture and promotes international-mindedness. Students are required to take the IB Exam. Students who do not take the IB Exam will incur International Baccalaureate Assessment fees.

### **THEORY OF KNOWLEDGE (TOK)**

**0900800 & 0900810 THEORY OF KNOWLEDGE**  
Offered: Grade 11 & 12  
Length: 2 Years  
Prerequisite: IB Acceptance

The purpose of this course is to make explicit through analysis, comparison, and interdisciplinary integration, the concepts of knowledge and their verification in the disciplines of mathematics, natural sciences, human sciences, history, and in moral, political, and aesthetic judgments. Students will be taught to identify sources of knowledge and evaluate knowledge claims, distinguish between knowledge by acquaintance and knowledge by description, evaluate language as a means of conveying knowledge, construct knowledge claims, analyze formal systems of knowledge, examine the relation of knowledge to value judgments, and distinguish degrees of certainty. Students are required to take the IB Exam. Students who do not take the IB Exam will incur International Baccalaureate Assessment fees.



## ADVANCED PLACEMENT/DUAL ENROLLMENT

### DUAL ENROLLMENT



Dual enrollment courses must be creditable to high school graduation. Students should see their School Counselor for dual enrollment course recommendations and approval. The principal reserves the right to final approval for all dual enrollment courses. Students who take dual enrollment courses will be subject to SSC prerequisites such as a PERT/SAT/ACT test score and/or GPA requirements.

Throughout our curriculum guide, you will find the dual enrollment logo to note courses that are dual enrollment. Additionally, here is a master list of our dual enrollment classes that we offer on our campus during the regular school day for WSHS students:

<b>COP2800</b>	<b>PROGRAMMING IN JAVA</b>
<b>DIG2000</b>	<b>INTRO TO DIGITAL MEDIA</b>
<b>GRA2201</b>	<b>BITMAP GRAPHICS</b>
<b>ETP2502</b>	<b>ALTERNATIVE ENERGY SOURCES</b>
<b>ETP2410</b>	<b>INTRO TO SOLAR ENERGY</b>
<b>ETP2420</b>	<b>SOLAR THERMAL SYSTEMS</b>
<b>SLS1301C</b>	<b>LIFE AND CAREER PLANNING</b>

### ADVANCED PLACEMENT



Advanced Placement Courses are designed for students who wish to pursue college level work while still in high school. Based on the results of the Advanced Placement exams administered in May, college credit may be awarded by participating colleges and universities. College admission officers highly recommend participation in Advanced Placement courses. According to College Board, the organization that provides the AP program, "students who participate in AP are ultimately given the responsibility to reason, analyze, and understand for themselves. Such intellectual training inevitably helps them succeed in college, where these skills are essential." Several of the Advanced Placement courses offered at Winter Springs High School require summer reading. It is recommended that students check with the instructor or visit the school website before making their course decisions.

Throughout our curriculum guide, you will find the AP logo to note courses that are Advanced Placement. Additionally, here is a master list of our Advanced Placement courses that we offer on our campus during the regular school day for WSHS students:

### LANGUAGE ARTS

1001420	AP ENGLISH LANGUAGE
1001430	AP ENGLISH LITERATURE

### WORLD LANGUAGES

0701380	AP FRENCH LANGUAGE AND CULTURE
0708400	AP SPANISH LANGUAGE AND CULTURE
0708410	AP SPANISH LIT AND CULTURE
0706375	AP LATIN

### MATHEMATICS

1202310	AP CALCULUS AB
1202320	AP CALCULUS BC
1210320	AP STATISTICS

### COMPUTER SCIENCE

0200335	AP COMPUTER SCIENCE PRINCIPLES
0200320	AP COMPUTER SCIENCE A

### SCIENCES

2000340	AP BIOLOGY
2003370	AP CHEMISTRY
2003421	AP PHYSICS 1
2003422	AP PHYSICS 2
2003430	AP PHYSICS C MECHANICS
2001380	AP ENVIRONMENTAL SCIENCE

### SOCIAL STUDIES

2103400	AP HUMAN GEOGRAPHY
2109420	AP WORLD HISTORY
2100330	AP US HISTORY
2106430	AP COMP POLITICS AND GOVT
2107350	AP PSYCHOLOGY
2109380	AP EUROPEAN HISTORY
2106420	AP US GOVERNMENT AND POLITICS
2102370	AP MACROECONOMICS

### FINE/PERFORMING ARTS

1300330	AP MUSIC THEORY
0104300	AP ART DRAWING PORTFOLIO
0109350	AP ART 2-DIMENSIONAL DESIGN
0109360	AP ART 3-DIMENSIONAL DESIGN
0100300	AP ART HISTORY

### AP ELECTIVES

1700500	AP SEMINAR (Capstone)
1700510	AP RESEARCH (Capstone)





The AP Capstone™ program has been developed by College Board at the request of college and university admissions officers and faculty. AP Capstone™ provides the opportunity for students to develop critical thinking, research, and communication skills. Students in the program will complete two AP courses: AP Seminar and AP Research. These two courses are uniquely aligned with core habits of mind, practices and skills that research has identified as critical to college and career success. Upon successful completion of both AP Capstone™ courses, four additional AP courses, and a level 3 or higher on the respective AP exams, students will receive the AP Capstone Diploma™.

**1700500 ADVANCED PLACEMENT SEMINAR**



1 credit Grades: 10-11

This foundational course provides students with opportunities to think critically and creatively, research, explore, pose solutions, develop arguments, collaborate, and communicate using various media. Students explore real-world issues through a cross-curricular lens and consider multiple points of view to develop deep understanding of complex issues as they make connections between these issues and their own lives. Students are assessed through two through-course performance tasks and a written exam.

**1700510 ADVANCED PLACEMENT RESEARCH**



Prerequisite: AP Seminar  
1 credit Grades: 11-12

This is the second course in the AP Capstone experience and allows students to design, plan and conduct a yearlong research-based investigation on a topic of individual interest. Through this inquiry and investigation, students demonstrate the ability to apply scholarly understanding to real-world problems and issues. Students are assessed through culminating performance tasks.

**LANGUAGE ARTS**

**HONORS & GIFTED ENGLISH EXPECTATIONS**

The honors and gifted level English classes require students to carry more responsibility in regard to outside reading and writing assignments. Such responsibilities require students to be self-motivated, organized, and consistent in their work ethic. The curriculum will move at a faster pace, so students should also maintain good attendance and a willingness to seek extra help when needed.

**READING REQUIREMENTS**

Students in grades 9 and 10 who do not meet the requirements for satisfactory performance in English language arts, may be enrolled in an accelerated reading support program. Schools will continue to make decisions that are in the best interest of each student regarding course enrollment and instructional support for students entering their senior year who have not demonstrated college readiness on the SAT, ACT, or through mastery of standards in mathematics or English language arts courses. Acceleration support courses taken in grades 9-12 may be taken only as elective credits for high school graduation. Acceleration support instruction may not be in lieu of English credits required for graduation.

**NGCAR-PD**

The District “may serve Level 2 students who do not need instruction in decoding and text reading efficiency in content area classes through a content area reading intervention. Teachers of these classes must complete the one hundred fifty (150) hour Content Area Reading Professional Development (CAR-PD) package, or complete the Next Generation Content Area Reading Professional Development (NGCAR-PD) [package].”

- 1001310 ENGLISH I**
- 1001320 ENGLISH I HONORS**
- 1001320L ENGLISH I GIFTED**

Prerequisite: None  
1 English Credit Each Grade: 9

English I provides instruction in the fundamentals of grammar, writing, vocabulary, and literature including non-fiction, short story, poetry, drama and the novel. Applied technical strategies are used to enhance oral and written communication and higher level thinking skills.

**1001340 ENGLISH II**

**1001350 ENGLISH II HONORS**

**1001350L ENGLISH II GIFTED**

Prerequisite: English I

1 English Credit Each Grade: 10

English II continues the development and application of higher level thinking skills and relevant language skills, both written and verbal, for college and the workplace. Students integrate expository and persuasive writing, literary genre, and world literature with applied/ technical communication strategies.

**1001370 ENGLISH III**

**1001380 ENGLISH III HONORS**

Prerequisite: English II

1 English Credit Each Grade: 11

English III extends grammar, composition, vocabulary skills and continues instruction in writing with emphasis on multi-paragraph essays and a documented paper. The focus is on Florida Standards and American Literature. Applied technical strategies are used to enhance oral and written communication and higher level thinking skills and to prepare students to be college-ready.

**1001420 ADVANCED PLACEMENT ENGLISH LANGUAGE**



Prerequisite: English II

1 English Credit Grades: 11-12

The purpose of this course is to provide students with an understanding of the semantic, structural and rhetorical resources of the English language. The course is designed to develop flexible writers who are able to write in various modes for a variety of purposes. This course focuses on the study of rhetoric and persuasion and will develop flexible writers who can write in various modes for a variety of purposes. Though fiction is utilized, there is an emphasis on non-

fiction texts including essays, articles, and visuals. This course is structured to help students meet college level expectations in reading, writing, and discussion; therefore, hard work and effort are required.

**1001405 ENGLISH IV: COLLEGE PREP**

Prerequisite: English III

1 English Credit Grade: 12

This course incorporates reading and writing study through a variety of informative text using grade-level writing craft. It also includes in-depth reading and analysis of informational selections. This curriculum is designed to develop critical reading and writing skills necessary for success in college courses. Students will be prepared for successful completion of Florida college English courses. The benchmarks in this course reflect the Florida College Competencies necessary for entry-level college courses and are also related to the College and Career Readiness (CCR) anchor standards, the exit standards of Florida's K -12 Standards.

**1001410 ENGLISH IV HONORS**

Prerequisite: English III

1 English Credit Grade: 12

In English IV students use the writing process to compose multi-paragraph expository, narrative, descriptive and persuasive essays, while applying the principles of standard English. Students read selections of world literature from a variety of periods with an emphasis on British authors. Students retrieve and interpret information from various sources including technology to create written and oral products.

**1001430 ADVANCED PLACEMENT ENGLISH LITERATURE**



Prerequisite: AP English Language or English III (Pre-DP IB AP English Language does NOT satisfy as prerequisite)

1 English Credit Grade: 12

Students study and discuss great works of literature from various genres and periods. Frequent reading and writing assignments focus on the critical analysis of literature and are designed to develop the students' understanding of style, subject, and

audience. Students study and discuss great works of literature from various genres and periods. Frequent reading and writing assignments focus on the critical analysis of literature and develop students' abilities to think analytically while expressing ideas clearly.

**1002300 ENGLISH I THROUGH ESOL**

**1002310 ENGLISH II THROUGH ESOL**

**1002320 ENGLISH III THROUGH ESOL**

**1002520 ENGLISH IV THROUGH ESOL**

Prerequisite: ESOL staffing

1 English Credit Each

Grades: 9-12

The purpose of these courses is to provide integrated educational experiences in the language arts strands of reading, writing, listening, viewing, speaking, language and literature. The district shall provide appropriate instructional strategies to meet the needs of ESOL students enrolled in this course. Note: These courses fulfill the requirements for English I, II, III, and IV.

**1002381 (Criterion #1-4) ESOL DEVELOPMENTAL LANG**

Prerequisite: ESOL staffing

1 Elective Credit

Grades: 9-12

The purpose of these courses is to provide instruction to speakers of languages other than English in the skills of listening, speaking, reading and writing in English. Students who scored Level 1 or 2 on FSA Reading and less than proficient on WIDA will be scheduled into this course.

**ELA ELECTIVES**

**1020830 DEBATE**

Prerequisite: None

1 Performing Arts Credit

Grades: 9 -12

Debate I covers the principles of persuasion, argumentation, debate, and their application to issues of current public interest. It includes units in student congress, philosophy debate and dramatic interpretation events. This course prepares students for debate tournaments. Study will concentrate on critical thinking and analytic skills as well as the preparation of presentations based on research and reading.

**JOURNALISM**

**8601010NP NEWSPAPER I**

Prerequisite: Application required; Digital Design I or concurrent enrollment

**8601020NP NEWSPAPER II**

Prerequisite: Newspaper I and application

**8601030NP NEWSPAPER III**

Prerequisite: Newspaper II and application

**8601900NP NEWSPAPER IV**

Prerequisite: Newspaper III and application

Prerequisite: Application required. See Yearbook or Newspaper Advisor for application.

1 Elective Credit Each

Grades: 9-12

Yearbook and newspaper courses are intended to provide students with varying levels of practical experience in the production and electronic journalistic media. The following topics are important: production skills for various media; the history and ethics of journalism; applications and issues in photojournalism; organization and management techniques related to production of journalistic media; use of technology; analysis of journalistic media; and careers in journalism. After school obligations and ad sales are required. Industrial Certificate in Adobe InDesign, Illustrator, Premier Pro & Photoshop can be accomplished at the end of these classes.

**8601010YB YEARBOOK I**

Prerequisite: Application required.

**8601020YB YEARBOOK II**

Prerequisite: Yearbook I and application

**8601030 YEARBOOK III**

Prerequisite: Yearbook II and application

**8601900 YEARBOOK IV**

Prerequisite: Yearbook III and application

1 Elective Credit Each

Grades: 9-12

Yearbook courses are intended to provide students with varying levels of practical experience in the production and electronic journalistic media. The following topics are important: production skills for various media; the history and ethics of journalism; applications and issues in photojournalism; organization, marketing and management techniques related to production of journalistic media; use of technology; analysis of journalistic media; and careers in journalism. After school obligations and ad sales are required.

## **MATHEMATICS**

### **1200310 ALGEBRA I**

Prerequisites: Advanced 8th Gr. Math or Pre Algebra  
1 Math Credit Grades: 9

This course is designed to provide the foundation for future secondary mathematics courses and to develop skills needed to solve mathematical problems. Topics shall include the following: functions; linear equations and inequalities; systems of linear equation and inequalities; polynomials; simplifying radical and rational expressions; solving and graphing quadratic equations; exponential functions; linear regression analysis including residuals; and introductory probability. Additionally, students will work on test taking skills and problem solving techniques to prepare for the End of Course Exam (EOC).

\*Algebra I or its equivalent is required for high school graduation.

### **1200320 ALGEBRA I HONORS**

Prerequisites: Advanced 8th Grade Math, Algebra I  
1 Math Credit Grades: 9

Algebra I Honors includes a rigorous, in-depth study of all of the topics included in Algebra I as well as the following: binomial theorem; solving radical and rational equations; systems of nonlinear functions; inverse functions; deeper exploration of arithmetic and geometric sequences and series. Additionally, students will work on test-taking skills and problem-solving techniques to prepare for the End of Course Exam (EOC). Algebra I or its equivalent course is required for high school graduation. A graphing calculator is required for Algebra I Honors. It is strongly recommended that students taking this course successfully complete their previous math course.

### **1206310 GEOMETRY**

### **1206320 GEOMETRY HONORS**

Prerequisite: Algebra I and passed Algebra I EOC  
(Algebra 1 Hon is required for 10th grade students)  
1 Math Credit Grades: 9-10

This course is designed to develop critical thinking skills in mathematical situations using deduction and discovery. Practical applications of geometric skills and concepts in the real world are included. Topics include, but not limited to the following: logic and reasoning; proofs; the study of Euclidean geometry of lines, planes, angles, triangles; similarity; rigid transformations; congruence; geometric inequalities; explorations with polygons and circles, area and volume; constructions. Additionally, students will work on test-taking skills and problem-solving techniques to prepare for the End of Course Exam (EOC).

### **1206310C GEOMETRY CO-TEACH**

Prerequisite: Algebra I and passed Algebra I EOC  
1 Math Credit Grades: 10-12

This course includes a rigorous, in-depth study of all of the geometry topics as well as, but not limited to the following: in depth constructions; Cavalieri's principle; proving and applying laws of sines and cosines in non-right triangles; conic sections. Additionally, students will work on test taking skills and problem solving techniques to prepare for the End of Course Exam (EOC). A graphing calculator is required. It is strongly recommended that students taking this course successfully complete their previous math course.

### **1200410/ 1206310 MATH FOR COLLEGE SUCCESS/ GEOMETRY**

Prerequisite: Liberal Arts Math 1  
1.5 Math Credit &  
0.5 Elective Credit Grades: 11-12

This course is designed to develop critical thinking skills in mathematical situations using deduction and discovery. Practical applications of geometric skills and concepts in the real world are included. Topics include, but not limited to the following: logic and reasoning; proofs; the study of Euclidean geometry of lines, planes, angles, triangles; similarity; rigid

transformations; congruence; geometric inequalities; explorations with polygons and circles, area and volume; constructions. Additionally, students will work on test-taking skills and problem-solving techniques to prepare for the End of Course Exam (EOC). MCS incorporates the Florida Standards for Mathematical Practices as well as the following Florida Standards for Mathematical Content: Expressions and Equations, The Number System, Ratios and Proportional Relationships, Functions, Algebra, Geometry, Number and Quantity, Statistics and Probability, and the Florida Standards for High School Modeling.

### **1207300 LIBERAL ARTS MATH 1**

Prerequisite: Students did not meet the requirements for Geometry

1 Math Credit

Grades: 10-12

This course will cover the following topics: budget; stock and investment explorations; simple & compound interest with exponential growth; solve literal equations; basic constructions; cross-sections of 3D objects; simple rational and radical equations; systems of linear and nonlinear equations; domain and range; geometric transformations; one variable descriptive statistics.

### **1207310 LIBERAL ARTS MATH 2**

Prerequisite: Geometry and a No Passing Score on the Algebra 1 EOC

1 Math Credit

Grades: 10-12

This course will cover the following topics: mortgage calculations; deferred payments with interest; net worth; remainder theorem; dividing polynomials; solving quadratic equations and systems of linear and nonlinear functions; finite geometric series; graphing polynomial, exponential, piecewise, and step functions; real world linear and exponential models; conic sections; parallel and perpendicular lines; complex numbers; simplifying radical and rational expressions; two-way tables and conditional probabilities; experimental design; margin of error.

### **1200387 FINANCIAL ALGEBRA**

Prerequisite: Geometry

1 Math Credit

Grades: 9-12

This course is targeted for students who need additional instruction in content to prepare them for success in upper-level mathematics. This course incorporates the Florida Standards for Mathematical Practices as well as the following Florida Standards for Mathematical Content: Algebra, Geometry, Number and Quantity, and Statistics, and the Florida Standards for High School Modeling. The course also includes Financial Literacy Standards found in Social Studies.

### **1200330 ALGEBRA II**

Prerequisite: Geometry

1 Math Credit

Grades: 9-12

This course is designed to study the structure of Algebra by providing foundations for applying these skills to other math and science fields. Topics include, but are not limited to the following: complex numbers; polynomial functions and their inverses; systems of linear and nonlinear equations and inequalities; polynomials; rational and radical functions; reciprocal functions; exponential and logarithmic functions; graphing and transformations of all the previously named functions along with trigonometry; sequences and series; conditional probability; normal distributions; introductory inference and margin of error; categorical and quantitative variable statistical analysis.

### **1200340 ALGEBRA II HONORS**

Prerequisite: Geometry

1 Math Credit

Grades: 9-12

This course includes a rigorous, in-depth study of all the Algebra II topics. Students will be expected to have a solid understanding of the following topics previously studied in Algebra I: rational expressions and equations; absolute value equations and inequalities; recursive formulas for arithmetic and geometric sequences; and normal distributions. Topics studied in Algebra II include, but are not limited to the following: piecewise functions; binomial expansion theorem; discontinuities; asymptotic behavior in

rational graphs; non-linear systems of equations; conic sections and partial sums of arithmetic and geometric series. A graphing calculator is required. It is strongly recommended that students taking this course have successfully completed their previous math course.

**1211300/ TRIGONOMETRY/**

**1201315 ANALYSIS OF FUNCTIONS**

Prerequisite: Algebra II

1 Math Credit

Grades: 10-12

This course is designed to be a semester-long follow up to Analysis of Functions and to prepare students to be successful in pre-calculus. Topics include but are not limited to the following: circular functions; trigonometric identities; graphs of trigonometric functions; particular and general solutions of trigonometric equations; solutions of right and oblique triangles; proving Pythagorean identities; using trigonometry in a complex plane; using trigonometry with vectors. A graphing calculator is required. Topics in Analysis of Functions include but are not limited to an in-depth study of the following: graphing and transformations of functions; piecewise functions; polynomials, rational expressions and equations; exponential and logarithmic functions; remainder and root theorems; complex number system; removable and non-removable discontinuities; trigonometry ratios and basic graphs. A graphing calculator is required.

**1202340 PRE-CALCULUS (HONORS)**

Prerequisite: Algebra II Honors

1 Math Credit

Grades: 10-12

Pre-Calculus is designed to provide a foundation for the study of calculus. Topics include analysis of algebraic, exponential, polynomial, rational, logarithmic, and trigonometric functions; intermediate and extreme value theorems; analytic geometry; vectors, polar and parametric equations; complex number system; infinite series, with an introduction to limits and continuity. A graphing calculator is required.

**1210300 PROBABILITY AND STATISTICS (HONORS)**

Prerequisite: Algebra II

1 Math Credit

Grades: 11-12

This course is designed to give students the tools needed to enable them to answer reasonable and theoretical practical real-life applications. Topics include, but are not limited to the following: permutations and combinations; probability distributions; normal distributions; Central Limit Theorem; sampling techniques; measures of central tendency and variability; linear regression; confidence intervals; and hypothesis tests of means and proportions. A graphing calculator is required.

**1202300 CALCULUS (HONORS)**

Prerequisite: Analysis of Functions/Trig

1 Math Credit

Grades: 10-12

This course is designed to provide a foundation for the study of advanced mathematics. Topics include, but are not limited to the following: functions and graphs, limits; continuity, derivatives and integrals with applications; optimization; velocity; acceleration; rates of change; antiderivatives; Riemann Sums; and the Fundamental Theorem of Calculus. Use of a graphing calculator is required.

**1202310 ADVANCED PLACEMENT CALCULUS AB**

**1202320 ADVANCED PLACEMENT CALCULUS BC**



Prerequisite: Pre-Calculus

1 Math Credit each

Grades: 11-12

AP Calculus AB and BC are designed for the highly motivated college-bound student who wishes to pursue college level work while still in high school. These courses are intended for students who have a thorough knowledge of college preparatory mathematics and elementary (algebraic, trigonometric, exponential, and logarithmic) functions. AB (Calculus 1) topics include limits and continuity, derivatives and integrals, and their applications. BC (Calculus 1 and 2) includes all AB topics with additional topics in sequences and series, polars, parametrics, and vectors. Based on the results of the AP exam, college credit may be awarded by participating colleges and universities. A graphing calculator is required.



**1200700 MATHEMATICS FOR COLLEGE READINESS**

Prerequisite: Algebra II or Financial Algebra  
1 Math Credit

Grade: 12

This course is designed to meet the needs of seniors who plan to attend college. Projects designed to help students research and apply to colleges, make a preliminary two-year course plan, and schedule first semester college classes will be incorporated throughout the year. Topics include but are not limited to the following: simplify polynomial expressions with math properties and exponents; prove polynomial identities; simplify and solve rational and radical equations; solve systems of equations graphically and algebraically; transform polynomial functions; statistical linear regression analysis; analyze domain and range. This course is supplemented with a graphing calculator. The standards align with the Mathematics Postsecondary Readiness Competencies deemed necessary for entry-level college courses.

**1210320 ADVANCED PLACEMENT STATISTICS**



Prerequisite: Algebra II  
1 Math Credit

Grades: 11-12

The purpose of this AP course in Statistics is to introduce students to the major concepts and tools for collecting, analyzing and drawing conclusions from data. The four broad conceptual themes are exploring data, planning a study, anticipating patterns in advance (simulation) and statistical inference. This course is taught utilizing graphing calculators.

**COMPUTER SCIENCE**

**0200335 ADVANCED PLACEMENT COMPUTER SCIENCE PRINCIPLES**



Prerequisite: Algebra I  
1 Elective Credit

Grades: 9-12

This course is for anyone who wants to learn more about how computers and technology can impact the world around you. You will explore how digital communication and the internet works, learn and apply the foundations of computer science to address and develop solutions to real-world problems, and

study how big data is used in analysis today. You will pursue your interests in digital projects that showcase your creativity. This is a year-long course equivalent to an introductory college-level computing course. The AP exam consists of a multiple-choice test at the end of year, and the creation of two digital artifact projects during the year. Most colleges award credit for students who achieve a passing score on the AP exam.

**0200320 ADVANCED PLACEMENT COMPUTER SCIENCE A**



Prerequisite: AP Computer Science Principles or Geometry Honors

1 Elective Credit Grades: 10-12

This course is for students who are interested in pursuing a career in a computer, technology, or engineering-related field. You will learn the fundamentals of software development using the Java programming language, focus on problem solving and algorithm development, and enhance your analytical thinking skills by developing computer-based solutions to complex problems.

This is a year-long course equivalent to a first-semester college-level course in Computer Science. The AP exam at the end of the year consists of both multiple-choice and free response questions. Most colleges award credit for students who achieve a passing score on the AP exam.

Note: Students who are considering taking multiple courses in computer science should take AP Computer Science Principles before taking AP Computer Science A, however it is NOT required. Students who have completed Geometry Honors may elect to take AP Computer Science A as their first computer science course.

**9003450 PROGRAMMING ESSENTIALS COP2800 DUAL ENROLLMENT PROGRAMMING IN JAVA**



Prerequisite: SSC requirements for Dual Enrollment– PERT/ACT/SAT and 2.5 GPA; AP Computer Science A

1 Elective Credit Grades: 11-12

This course is for students who have completed AP

Computer Science A and wish to pursue advanced topics, skills, and methodologies in programming. Students will explore algorithm development and have the opportunity to participate in programming competitions throughout the state. Projects will also be larger in scope and size.

The second semester of this course is a dual enrollment course offered through Seminole State College (given here at WSHS), and students who pass the second semester will also earn college credit through SSC.

## **SCIENCE**

These science courses meet the state's science lab requirement.

### **2001340 ENVIRONMENTAL SCIENCE (PRE-BIOLOGY)**

Prerequisite: School placement only

1 Science Credit

Grade: 9

This course is designed to help students develop skills in the areas of academic performance, learning strategies and critical thinking. It will be a study of the interactions between organisms and the environment, biogeochemical cycles, the evolution of life on earth and energy flow. Upon completion of this course, students will take Biology in preparation for the end-of-course exam, a graduation requirement.

### **2001380 ADVANCED PLACEMENT ENVIRONMENTAL SCIENCE**



Prerequisite: Biology, Chemistry, Algebra II

1 Science Credit

Grades: 11-12

This is a college-level course which provides the student with the scientific principles, concepts, and methods required to understand the interrelationships of the natural world, to identify and analyze environmental problems both natural and human-made, to evaluate the relative risks associated with these problems, and to examine alternative solutions for resolving and or preventing them. The challenging nature of the course requires the student to devote significant quantities of time and effort outside regular class time.

### **2000310 BIOLOGY I**

### **2000320 BIOLOGY I HONORS**

### **2000320L BIOLOGY I GIFTED**

Prerequisite: Environmental Science or Level 2 or higher  
8th grade reading scores

1 Science Credit

Grades: 9-10

This course is designed to help students develop skills in the areas of cooperative learning, critical thinking, the scientific method, and the utilization of technology in the research of contemporary problems and issues. The study of life processes will include cellular biology, genetics, ecology, animal and plant anatomy and physiology, as well as an introduction to the structure and function of the human body. Laboratory activities and safe laboratory techniques are an essential component of the course. In these courses students will explore the relationships between organisms and their environments and between individual cells and biological systems. The processes of life will be approached from the viewpoints of cellular structure and function, genetics and molecular biology, classification of organisms, physiology, biochemistry and biological changes through time

### **2000340 ADVANCED PLACEMENT BIOLOGY**



Prerequisite: Biology

1 Science Credit

Grades: 9-12

This course is a first year college biology course. The content includes, but is not limited to the following: cell biology, biochemistry, classical genetics, molecular genetics, evolution, ecology, taxonomy, and the anatomy and physiology of plants and animals. The challenging nature of this course requires the student to devote significant quantities of time and effort outside of regular class time.

### **2003310 PHYSICAL SCIENCE**

Prerequisite: Biology, failing score on Biology EOC and/ or no Algebra I credit

1 Science Credit

Grades: 10-11

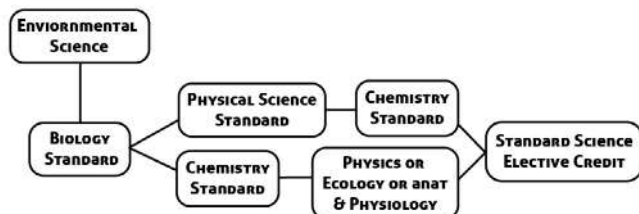
This pre-chemistry course will prepare students to develop an understanding of the role of chemical and physical technology in everyday life and society. Laboratory activities and safe laboratory techniques are essential components of the course and allow students to become familiar with scientific instruments



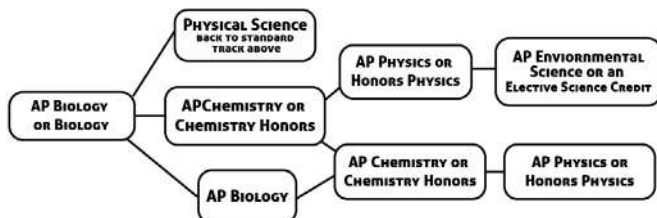
and methods as well as provide opportunities to study the concepts of matter, energy, and forces, and their applications through exploratory investigations and activities. This course fulfills the graduation requirement for an "Equally Rigorous course" as defined by the Florida Department of Education.

## **WSHS SCIENCE DEPARTMENT PROGRESSION PLAN 2017-2018**

### Standard Track



### Honors Track



### Notes

To graduate, a student must have completed 4 science courses; at least 3 of those credits must be science credits (science labs) and only ONE may be a science elective credit. Science elective credit courses offered at WSHS include: Experimental Science and Renewable Energy.

To earn the Scholar Designation on the High School diploma students must do the following: pass the Biology I EOC, earn 1 credit in chemistry or physics, and earn 1 credit in a course equally rigorous to chemistry or physics.

#### **2003340 CHEMISTRY**

#### **2003350 CHEMISTRY HONORS**

#### **2003350L CHEMISTRY GIFTED**

Prerequisite: Standard level, Biology, Algebra I; Honors level, Biology, Geometry  
1 Science Credit Grades 10-12

The purpose of this course is to introduce students to the study of the composition, properties and changes associated with matter. The content shall include, but

not limited to: measurement, classification and structure of matter, atomic theory, moles, periodicity, chemical bonding, formula writing, nomenclature, chemical equations, stoichiometry, kinetic theory, gas laws, acids and bases, energy relationship, solids, liquids, and solutions, and an introduction to organic chemistry. A strong math background is recommended for these levels of chemistry. Laboratory activities and safe laboratory techniques are an essential component of this course.

#### **2003370 ADVANCED PLACEMENT CHEMISTRY**



Prerequisite: Chemistry and Algebra II  
1 Science Credit Grades: 10-12

AP Chemistry is a college-level course which includes, but is not limited to, the structure of matter, the states of matter, chemical reactions and descriptive chemistry. Laboratory experiments are a significant component. The challenging nature of this course requires the student to devote significant quantities of time and effort outside of regular class time.

#### **2003380 PHYSICS I**

#### **2003390 PHYSICS I HONORS**

Prerequisite: Chemistry and Algebra II  
1 Science Credit Grades: 11-12

The physics standard and honors courses will provide students with an introduction to matter, energy, and the forces of nature. Topics include but are not limited to mechanics, optics, sound, electricity and magnetism. Laboratory activities and safe laboratory techniques are an essential component of this course. Honors level Physics prerequisites include Honors Chemistry and Honors Algebra II. The content shall include, but not be limited to mechanics, wave phenomena, electricity, magnetism, optics, and sound. Laboratory activities and safe laboratory techniques are an essential component of this course.

#### **2003421 ADVANCED PLACEMENT PHYSICS 1**



Prerequisite: Completion or concurrent enrollment in Pre-calculus  
1 Science Credit Grades: 11-12

This AP course is equivalent to a first-semester college physics course. It has been written to serve as a first



worldwide, there has been an increased emphasis on utilization of non-conventional power sources. This course addresses and explores technological advances in alternative forms of energy. Characteristics of both conventional and emerging technologies such as nuclear, hydro-electric, solar, wind, geo-thermal, ocean energy, hydrogen and battery-electric will be explored. Students will be exposed to the obstacles of alternative energy development and technological challenges of their implementation such as cost, infrastructure and availability bases on geography. Pollution and global climate change will be discussed. Identification of major outdoor air pollutants, the scope of outdoor air pollution and the assessment of potential solutions will be emphasized.

**ETP 2410 DUAL ENROLLMENT: INTRO TO SOLAR ENERGY**



Prerequisite: SSC requirements  
– PERT/ ACT/SAT and GPA 3.0 required

grades; Renewable/Solar Teacher approval or ETP 2502 Alternative Energy Sources – DE or Renewable Energy Honors. Grades 10- 11 must be concurrently enrolled in another science class.

0.5 Elective Science Credit Grades: 10-12

Student will receive 3 college credits as well as high school credit. This course will introduce the student to the principles and fundamental photovoltaic technology. Solar radiation, site survey and planning, solar components and configuration, batteries, PV panel construction, inverters and system sizing are some of the topics covered in depth in this course. This course will help the student develop knowledge of the complete photovoltaic system and the different configurations used in industry.

**ETP 2420 DUAL ENROLLMENT: SOLAR THERMAL SYSTEMS**



Prerequisite: SSC requirements  
– PERT/ ACT/SAT and GPA 3.0 required

grades; Renewable/Solar Teacher approval or ETP 2502 Alternative Energy Sources – DE or ETP 2410 Intro to Solar Energy – DE or Renewable Energy Honors. Grade 11 must be concurrently enrolled in another science class.

0.5 Elective Science Credit Grades 11-12

This course covers the background, history, essential

theory, and principles of Solar Thermal Technology. Specific topics include: Solar fundamentals; solar water heating systems and components, system installation, check-out and start-up procedures, troubleshooting, pool heating, and code and safety issues.

**SOCIAL STUDIES**

**2109310 WORLD HISTORY**

**2109320 WORLD HISTORY HONORS**

Prerequisite: None

1 World History Credit Grade: 10

These courses will provide an understanding of the contemporary world through an overview how politics, economics, geography, world religions, culture, science, technology, citizenship and global relations have influenced and shaped the major events from the Middle Ages to the 21st century. This course will meet graduation requirements for World History.

**2109420 ADVANCED PLACEMENT WORLD HISTORY**



Prerequisite: None

1 World History Credit

Grades: 10-12

This college-designed course offers comprehensive analysis of World History. It is designed to provide students with the analytical skills and factual knowledge necessary to deal critically with the materials in World History. The purpose of this course is to develop greater understanding of the evolution of global process and contacts and of the interaction of different types of human societies. This course will meet the graduation requirement for World History.

**2100310 UNITED STATES HISTORY**

**2100320 UNITED STATES HISTORY HONORS**

Prerequisite: World History

1 United States History Credit Grade: 11

These courses begin with a brief overview of the Revolutionary War through the Civil War, and continue with an in-depth study of America’s growth, through the 19th, and 20th centuries into the 21st century. These courses will meet graduation requirements for American History.

**2100330      ADVANCED PLACEMENT US HISTORY**



Prerequisite: World History

1 US History Credit

Grade: 11

This course includes advanced content in American history, emphasizing critical essay writing, primary and secondary source research techniques, in-depth interpretations and analysis of the traditional historical periods in a chronological survey of American history. This course will meet the graduation requirement for US History.

**2102335D      ECONOMICS WITH FINANCIAL LITERACY**

Prerequisite: US History

0.5 Economics Credit

Grade: 12

This course fulfills the online course graduation requirement. The Economics with Financial Literacy course consists of the following content area strands: Economics and Geography. The primary content emphasis for this course pertains to the study of the concepts and processes of the national and international economic systems. Content should include, but is not limited to the following: currency, banking, and monetary policy; the fundamental concepts relevant to the major economic systems; the global market and economy; major economic theories and economists; the role and influence of the government and fiscal policies; economic measurements, tools, and methodology; financial and investment markets; and the business cycle. This course content will also consist of consumer and personal finance which includes but is not limited to the following: concepts of personal finance, budgeting, credit reports, personal credit, checking and savings accounts; consumerism; interest; higher education financing; insurance policies; employment contracts and tax forms.

**2102345D      ECONOMICS WITH FINANCIAL LITERACY HONORS**

Prerequisite: US History

0.5 Economics Credit

Grade: 12

This course fulfills the online course graduation requirement.

In addition to the above course description, this honors course offers scaffolded learning opportunities for students to develop the critical skills of analysis, synthesis, and evaluation in a more rigorous and reflective academic setting. Students are empowered to perform at higher levels as they engage in the following: analyzing historical documents and supplementary readings, working in the context of thematically categorized information, becoming proficient in note-taking, participating in Socratic seminars/discussions, emphasizing free-response and document-based writing, contrasting opposing viewpoints, solving problems, etc. Students will develop and demonstrate their skills through participation in a capstone and/or extended research-based paper/project (e.g., history fair, participatory citizenship project, mock congressional hearing, projects for competitive evaluation, investment portfolio contests, or other teacher-directed projects).

**2102370      ADVANCED PLACEMENT MACROECONOMICS**



Prerequisite: US History

0.5 Economics Credit

Grade: 12

This course is the study of the economy as a whole with special emphasis on National Income Accounting, Fiscal Policy, Monetary Policy and World Markets. This course will meet the graduation requirement for Economics.

**2106310D      AMERICAN GOVERNMENT**

**2106320D      AMERICAN GOVERNMENT HONORS**

Prerequisite: US History

0.5 American Gov Credit

Grades: 12

This course fulfills the online course graduation requirement.

These courses provide an understanding of American Governmental system and political behavior. Content includes an analysis of documents which shape our political traditions, the roles of the three branches of government, an understanding of the evolving role of political parties and interest groups in determining government policy and the rights and responsibilities of citizens. These courses will meet graduation requirements for American Government.

**2106420      ADVANCED PLACEMENT UNITED STATES GOVERNMENT AND POLITICS**



Prerequisite: US History

0.5 American Gov Credit                      Grade: 12

This course examines U.S. politics through an analysis of the foundations, documents, and institutions of American Government. Emphasis is placed on content and interpretation of the Constitution, federalism, Congress, the Presidency, the Federal Court system, the electoral process and the media, as well as the roles and responsibilities of citizens. This course will meet the graduation requirement for American Government.

**SOCIAL STUDIES ELECTIVES**

**2103300      WORLD CULTURAL GEOGRAPHY**

Prerequisite: None  
1 Elective Credit                      Grade: 9

This course pertains to the study of world cultural regions in terms of location, physical characteristics, demographics, historical changes, land use, and economic activity. Topics covered include, but are not limited to, the use of geographic tools and skills to gather and interpret data and to draw conclusions about physical and human patterns, the relationships between physical geography and the economic, political, social, cultural and historical aspects of human activity, patterns of population growth and settlement in different cultures and environments, the interaction between culture and technology in the use, alteration and conservation of the physical environment, and the interrelationships and interdependence of world cultures.

**103400      ADVANCED PLACEMENT HUMAN GEOGRAPHY**



Prerequisite: None  
1 Elective Credit

Grades: 9-12

The purpose of this course is to expose students to the world's locations, cultures, economies, and governments. This course studies the patterns and processes that have shaped human understanding. Students will use spatial concepts and landscape analysis to examine social organization and its environmental consequences.

**2107300      PSYCHOLOGY I**  
**2107310      PSYCHOLOGY II**

Prerequisite: None  
0.5 Elective Credit each                      Grades: 10-11

This course is a general overview on understanding human thought, behavior and behavioral interaction. Content will include the theories and methods of study used by psychologists. Topics will also include the following: human growth and development, motivation and emotion, intelligence, conditioning and learning, memory, personality and behavior, abnormal behavior, conformity, autonomy, alienation, stress, mental health and therapy.

\*Note: Students will be automatically registered for Psychology II for the second semester as each are half year courses.

**2107350      ADVANCED PLACEMENT PSYCHOLOGY**



Prerequisite: None  
1 Elective Credit                      Grades: 11-12

This course is designed to introduce students to the systematic and scientific study of the behavior and mental processes of human beings and animals. Students will study the psychological facts, principles and phenomena associated with each of the major subfields within psychology. Students will also learn about the methods psychologists use in their science and practice.

**2109380      ADVANCED PLACEMENT EUROPEAN HISTORY**



Prerequisite: World History  
1 Elective Credit                      Grades: 11-12

This course is a study of European History since 1450. It introduces students to cultural, economic, political and social developments that played a fundamental role in shaping the world in which they live. Students will develop an understanding of the principal themes in European History, analyze historical evidence, and express historical understanding in writing.



**2100340 AFRICAN AMERICAN HISTORY**

Prerequisite: None

1 Elective Credit

Grade: 10-12

This course consists of the following content area strands: World History, American History, Geography, Humanities, Civics and Government. The primary content emphasis for this course pertains to the study of the chronological development of African Americans by examining the political, economic, social, religious, military and cultural events that affected the cultural group. Content will include, but is not limited to, West African heritage, the Middle Passage and Triangular Trade, the African Diaspora, significant turning points and trends in the development of African American culture and institutions, enslavement and emancipation, the Abolition, Black Nationalist, and Civil Rights movements, major historical figures and events in African-American history, and contemporary African-American affairs.

**WORLD LANGUAGES****0701320 FRENCH I**

Prerequisite: None

1 Elective Credit

Grades: 9-12

This course is designed to emphasize speaking and listening skills with students' oral participation in the target language. Reading and writing are introduced and basic grammar structures explained. Students will be introduced to the culture and customs of various French speaking countries.

**0701330 FRENCH II**

Prerequisite: French I

1 Elective Credit

Grades: 9-12

This course is designed for the student to continue to develop skills in listening and speaking. Conversation in the target language is stressed. Reading and writing will be further developed through expanded vocabulary and more complex grammatical structures. Culture, history and geography will be studied in greater depth.

**0701340 FRENCH III (HONORS)**

Prerequisite: French II

1 Elective Credit

Grades: 9-12

This course is designed for students to master and build upon the skills in French II. Students will participate in progressively more challenging conversations and strive to communicate successfully in basic survival situations. Opportunities for enjoyment of the customs, ideas and heritage will increase.

**0701380 ADVANCED PLACEMENT FRENCH LANGUAGE AND CULTURE**

Prerequisite: French III

1 Elective Credit

Grades: 10-12

This course will prepare students for the French Language Advanced Placement Examination which challenges students to attain high levels of proficiency in speaking, listening, reading and writing. The use of authentic materials helps to increase accuracy and fluency.

**0706300 LATIN I**

Prerequisite: None

1 Elective Credit

Grades: 9-12

This course is designed to introduce fundamental Latin vocabulary and grammar along with classical culture. Mythology, Roman family life and strategies to increase English vocabulary are featured. Translation exercises emphasize a better understanding and a more precise use of English.

**0706310 LATIN II**

Prerequisite: Latin I

1 Elective Credit

Grades: 10-12

The Latin II Course is an extension of Latin I. Greater emphasis is placed upon more complex grammar, advanced vocabulary and English derivatives. Students will acquire a more detailed knowledge of Roman mythology, history, and culture. The students will be introduced to excerpts from the Commentaries of Julius Caesar.

**0706320 LATIN III (HONORS)**

Prerequisite: Latin II

1 Elective Credit

Grades: 11-12

This course is designed to continue the study of Latin vocabulary and derivatives. Readings from Latin authors contribute to an understanding of the nation.

**0706375 ADVANCED PLACEMENT LATIN**



Prerequisite: Latin III

1 Elective Credit

Grades: 11-12

This course will prepare students for the AP Latin exam which will assess student ability to read, understand, translate, and analyze Latin poetry and prose. The exam will focus not only on translating the required Latin readings but also on reading and comprehending new passages at sight. Additionally, students will be expected to describe and analyze Latin grammar, syntax, and style, and to connect the texts that they read with the people, practices, and events that shaped the ancient Roman world.

**0708340 SPANISH I**

Prerequisite: None

1 Elective Credit

Grades: 9 -12

This course is designed to emphasize speaking and listening skills with students' oral participation in the target language. Reading and writing are introduced and basic grammar structures explained. Students will be introduced to the culture and customs of various Spanish speaking countries. This course is not for native Spanish speakers.

**0708350 SPANISH II**

Prerequisite: Spanish I

1 Elective Credit

Grades: 9-12

This course is designed for the student to continue to develop skills in listening and speaking. Conversation in the target language is stressed. Reading and writing will be further developed through expanded vocabulary and more complex grammatical structures. Culture, history and geography will be studied in greater depth.

**0708360 SPANISH III (HONORS)**

Prerequisite: Spanish II

1 Elective Credit

Grades: 9-12

This course is designed for students to master and build upon the skills acquired in Spanish II. Students will participate in progressively more challenging conversations and communicate successfully in basic survival situations. Opportunities for enjoyment of the customs, ideas and heritage will increase.

**0708370 SPANISH IV (HONORS)**

Prerequisite: Spanish III

1 Elective Credit

Grades: 9-12

Spanish 4 expands the skills acquired by the students in Spanish 3. Specific content includes, but is not limited to, more advanced language structures and idiomatic expressions, with emphasis on conversational skills. There is additional growth in vocabulary for practical purposes, including writing. Reading selections are varied and taken from the target language newspapers, magazines, and literary works.

**0708400 ADVANCED PLACEMENT SPANISH LANGUAGE AND CULTURE**



Prerequisite: Spanish III and Teacher Recommendation

1 Elective Credit

Grades: 10-12

This course is taught exclusively in Spanish. In this course, students will develop a strong command of Spanish across the three modes of communication: interpretive, interpersonal and presentational. Students learn through a variety of media: journalistic and literary works, podcasts, interviews, movies, charts, and graphs with rich vocabulary and linguistic structures. Students will broaden their knowledge of the various cultures that comprise the Spanish-speaking world.

**0708410 ADVANCED PLACEMENT SPANISH LITERATURE AND CULTURE**



Prerequisite: AP Spanish Language

1 Elective Credit

Grades: 11-12

This course introduces students to the formal study of a representative body of thirty-eight texts from

Peninsular, Latin American, and US Hispanic literature. A key objective of the course is to relate the content of the texts to literary, historical, sociocultural, and geopolitical contexts in Spanish. The methods in literary analysis, attention to linguistic detail, and critical interpretation will translate to success in college and also in future professional careers.

### **0717300 AMERICAN SIGN LANGUAGE I**

Prerequisite: None

1 Elective Credit

Grades: 9-10

This course will teach hearing students basic conversational skills in American Sign Language (ASL) and awareness of various aspects of deafness. The content includes conversational vocabulary, grammatical features and principles of ASL, the audio logical, educational, social, cultural, and historic aspects of deafness.

### **0717310 AMERICAN SIGN LANGUAGE II**

Prerequisite: ASL I

1 Elective Credit

Grades: 10-11

This course will further develop knowledge of sign language and an awareness of cultural aspects of the deaf community. Students will increase their ASL vocabulary by approximately 700 signs while continuing to use grammatical principles. Students will maintain an activity journal documenting hours spent with the deaf community. Students will create a video demonstrating meaningful dialogue, narratives and dramas.

### **0717312 AMERICAN SIGN LANGUAGE III (HONORS)**

Prerequisite: ASL II

1 Elective Credit

Grades: 11-12

This course is designed for students to pursue the goal of fluency in the language. Emphasis is on advanced structure and mastery of skills and vocabulary acquired in American Sign Language II. The students will additionally learn the steps taken to become professional interpreters including certification procedures and the Code of Ethics of professional conduct. Due to the advanced level of language in this course, students are required to complete a summer assignment prior to the start of the school year.

### **0717314 AMERICAN SIGN LANGUAGE IV (HONORS)**

Prerequisite: ASL III

1 Elective Credit

Grades: 11-12

This course is designed for students to develop fluency in the language. Emphasis is on advanced structure and mastery of skills and vocabulary acquired in American Sign Language III. The students will also learn the steps taken to become professional interpreters including certification procedures and the Code of Ethics of professional conduct. Due to the advanced level of language in this course, students are required to complete a summer assignment prior to the start of the school year.

## **FINE AND PERFORMING ARTS**

### **ART**

#### **0101355 CREATING 2D ART**

Prerequisite: None

0.5 Performing Fine Art Credit

Grades: 9-12

This is an introductory course in which students will explore basic drawing and painting skills and techniques. Students will learn the principles and elements of design and will incorporate this knowledge into the creation of drawings and paintings using a variety of media. The course integrates knowledge of art history to broaden personal viewpoints.

#### **0104335 DRAWING I**

Prerequisite: Creating 2D Art

0.5 Performing Fine Art Credit

Grades: 9-12

The purpose of this course is to enable students to develop basic perceptual, observational, and compositional skills necessary to communicate a range of subject matter, symbols, ideas, and concepts using knowledge of drawing media, processes, and techniques.

#### **0104365 PAINTING I**

Prerequisite: Creating 2D Art

0.5 Performing Fine Art Credit

Grades: 9-12

The purpose of this course is to enable students to develop basic perceptual, observational, and compositional skills necessary to communicate a range of subject matter, symbols, ideas, and concepts using knowledge of painting media, processes, and techniques.



**0109310 PORTFOLIO DEVELOPMENT:  
DRAWING (HONORS)**

**0109320 PORTFOLIO DEVELOPMENT: 2D  
DESIGN (HONORS)**

Prerequisite: Instructor's approval  
1 Performing Fine Art Credit Each Grades: 11-12

The portfolio courses are designed for the advanced student who may pursue art in college or as a career. The objective is for each individual to complete a professional body of work at the college level. Portfolio is the final preparation for the serious art student before taking Advanced Placement.

**0101365 CREATING 3D ART**

Prerequisite: None  
0.5 Performing Fine Art Credit Grades: 9-12

This is an introductory course in which students will explore a variety of three dimensional media and techniques. Students will learn the principles and elements of design and will incorporate this knowledge into a number of sculptural forms through modeling, carving and construction. The course integrates knowledge of art history to broaden personal viewpoints.

**0111310 SCULPTURE I**

Prerequisite: Creating 3D Art  
0.5 Performing Fine Art Credit Grades: 10-12

The purpose of this course is to enable students to develop basic skills in the use of sculpture media, design, processes, and techniques. Emphasis shall be placed on the use of visual, spatial, and compositional concepts to communicate a range of ideas

**0111320 SCULPTURE II**

Prerequisite: Sculpture I  
1 Performing Fine Art Credit Grades: 11-12

The purpose of this course is to enable students to develop intermediate-level skills in the use of sculpture media, design, processes, and techniques. Emphasis shall be placed on the use of visual, spatial, and compositional concepts to communicate a range of ideas.

**0109330 PORTFOLIO III: 3D DESIGN  
(HONORS)**

Prerequisite: Creating 3D Art, Sculpture I & II  
1 Performing Fine Art Credit Grades: 11-12

**0104300 ADVANCED PLACEMENT ART  
DRAWING PORTFOLIO**



**0109350 ADVANCED PLACEMENT ART  
2-DIMENSIONAL DESIGN**



Prerequisite: Art 2D II, Drawing, or  
Painting  
1 Performing Fine Art Credit Grades: 11-12

These courses are designed for the highly motivated student who plans to take art at the college level. Students intending to enroll in 2D AP Portfolio classes must demonstrate understanding of the elements of art and the principles of design by submitting a portfolio of their current work for consideration by the AP 2D instructor. Students will develop an understanding of art historical styles and techniques, art criticism, and aesthetics from a multi-cultural perspective. To earn AP credit, students must have at least 24 high quality works for each portfolio and meet the requirements and standards set by the Advanced Placement Guidelines. Students must be capable of independent study and research and are expected to work extensively outside of class. Students will submit a portfolio for evaluation to AP College Board in May—unlike other AP classes, there is no formal seated exam.

**0109360 ADVANCED PLACEMENT ART  
3-DIMENSIONAL DESIGN**



Prerequisite: Sculpture II  
1 Performing Fine Art Credit  
Grades: 11-12

These courses are designed for the highly motivated student who plans to take art at the college level. Students will be required to maintain an extensive sketchbook as part of the AP Portfolio class. Students will be expected to demonstrate an understanding of art history, art criticism, and aesthetics from a multi-cultural perspective. Students must have at least 30 high quality works for each portfolio and meet the

requirements and standards set by the Advanced Placement Guidelines. Students must be capable of independent study and research and are expected to work outside of class. Students will submit a portfolio for evaluation to AP College Board in May.

**0100300      ADVANCED PLACEMENT ART HISTORY**



Prerequisite: None  
1 Performing Fine Art Credit

Grades: 11-12

AP Art History welcomes students to discover the diversity in and connections among forms of artistic expression throughout history and from around the globe. Students learn about how people have responded to and communicated their experience through art by exploring architecture, painting and sculpture in their historic and cultural contexts. Students study and discuss great works of art from various cultures, genres and periods. Reading and writing assignments focus on the critical analysis of art and develop students' abilities to think analytically while expressing ideas clearly. No artistic skill is required.

**0109320Q      PORTFOLIO DEVELOPMENT: PHOTOGRAPHY (HONORS)**

Prerequisite: Teacher recommendation

Grades: 11-12

**DRAMA**

**0400300      INTRODUCTION TO DRAMA/ IMPROVISATION**

Prerequisite: None  
1 Performing Fine Art Credit

Grades: 9-12

Students will explore various performance, technical, and historical aspects of theatre. They will learn about basic characterization through physical activity, reading selected theatre literature, and improvisational games. Students will also learn through hands-on experience with special effects make-up, costumes, etc. Students are expected to attend one or more performances outside the school day to support, extend, and assess learning in the classroom. Students learn to communicate effectively, both verbally and non-verbally; develop and build critical listening and collaborative skills, and think and solve problems

quickly and appropriately on the spot, which transfers well to academic, career, and social arenas.

**0400370      ACTING I**

Prerequisite: Audition and instructor approval  
1 Performing Fine Art Credit      Grades: 9-12

This course is for the serious performer who wishes to pursue an acting career. Through improvisation, simple scripted scenes, performance projects, and/or practical application, students learn to identify what makes performances believable and explore the tools used to create, articulate, and execute them. Public performances may serve as a culmination of specific instructional goals. Students may be required to attend and/or participate in rehearsals and performances outside the school day to support, extend, and assess learning in the classroom.

**0400320      THEATRE 2**

Prerequisite: Audition/Instructor Approval  
1 Performing Fine Art Credit      Grades: 10-12

This intermediate-level class, designed for students with some experience, promotes enjoyment and appreciation for all aspects of theatre through opportunities to build significantly on existing skills. Class work focuses on characterization, playwriting, and playwrights' contributions to theatre. Improvisation, creative dramatics, and scene work are used to help students challenge and strengthen their acting skills and explore the technical aspect of scene work. As students gain skills and experience, they explore the relationships among technology, theatre, and theatre's other art forms.

**0400330      THEATRE 3 (HONORS)**

Grades: 10-12

**0400340      THEATRE 4 (HONORS)**

Grades: 11-12

Prerequisite: Audition and instructor approval  
1 Performing Fine Art Credit each

These courses are designed for students with significant experience in theatre. Students regularly reflect on aesthetics and issues related to and addressed through theatre, and create within various aspects of theatre in ways that are progressively more innovative. In keeping with the rigor expected in an accelerated setting, students assemble a portfolio

that showcases a significant body of work representing personal vision and artistic growth over time. Students will be expected to compete at the Thespian District competitions and attend all accompanying after-school rehearsals. They will also be required to have hands-on involvement in school productions.

**0400700 MUSICAL THEATER I**

Prerequisite: None

Grades: 9-12

**0400710 MUSICAL THEATER II**

Prerequisite: Musical Theater I

**0400720 MUSICAL THEATER III**

Prerequisite: Musical Theater II

1 Performing Fine Art Credit each

In these courses, students will learn from the styles and techniques used by well-known singer-actor-dancers and choreographers to build a performance portfolio for auditions and/or interviews. Students survey the evolution of music in theatre from ancient Greece to modern Broadway. Students examine the contributions of major writers, composers, lyricists, and choreographers or musical theatre and learn to analyze the structures, stories, and settings of musical theatre exemplars to understand how those components serve the story and concept. Students extend their dance and movement techniques required to sing and dance at the same time.

**0400410 STAGECRAFT**

(Only Levels 2-5 are offered)

Prerequisite: Instructor Approval

1 Performing Fine Art Credit

Grades: 10-12

Students focus on developing the basic tools and procedures for creating elements of technical theatre, including costumes, lighting, makeup, properties (props), publicity, scenery, and sound. Technical knowledge of safety procedures and demonstrated safe operation of theatre equipment, tools, and raw materials are central to success in this course. Students explore and learn to analyze dramatic scripts, seeking production solutions through historical, cultural, and

geographic research. Students may be required to attend or participate in technical work, rehearsals, and/or performances beyond the school day to support, extend, and assess learning in the classroom. \*Students will be using construction techniques and materials.\*

**MUSIC**

**1303300 CHORUS 1**

**1303310 CHORUS 2**

**1303340 CHORUS 5 (HONORS)**

**1303350 CHORUS 6 (HONORS)**

**1303440 VOCAL ENSEMBLE I  
(after school class)**

**1303450 VOCAL ENSEMBLE II  
(after school class)**

**1303400 VOCAL TECHNIQUE**

Prerequisite: Choral Director MUST sign registration form for proper placement

1 Perform Fine Art Credit Each

Grades: 9-12

The purpose of these courses is to provide students with instruction in the development of vocal technique and musicianship. Interpreting notation, singing with appropriate tone production, and performance techniques are demonstrated through varied choral literature. After school rehearsals and performances are required and are part of the grade.

**1301320 GUITAR I**

Prerequisite: Students must have access to an acoustic guitar.

1 Performing Fine Art Credit

Grades: 9-12

This course is designed for those wishing to learn to read music with application to the guitar. Students will learn to read solos and chord accompaniments. Musical styles including jazz, folk, rock and classical will be studied. Emphasis will be placed on correct technique, reading notation and rhythms. Performance opportunities include classroom performance as well as a possible concert performance.

**1302420 INSTRUMENTAL TECHNIQUES I**

(BAND PERCUSSION)

**1302430 INSTRUMENTAL TECHNIQUES II**

(BAND PERCUSSION)

**1302440 INSTRUMENTAL TECHNIQUES III**

(BAND PERCUSSION)

**1302450 INSTRUMENTAL TECHNIQUES IV**

(BAND PERCUSSION)

Prerequisite: Band Director MUST sign registration form for proper placement

1 Performing Fine Art Credit Each Grades: 9-12

This course is designed to sensitize students to the importance of rhythms of music. Rhythms of all styles of music will be discussed, watched, listened to and analyzed. Hands-on experience with various percussion instruments will be the central focus of the group activities. Students must provide a pair of drum sticks and a drum practice pad. Upon completion of this course, the student will have a working and playing knowledge of percussion instruments. Honors credit is available for students in their junior and senior years who participate in the FBA Solo & Ensemble Festival each February. A \$60.00 mallet and stick fee is required from all students in this course.

**1303360 GOSPEL CHORUS I**

**1303370 GOSPEL CHORUS II**

Prerequisite: Audition and instructor approval

1 Performing Fine Art Credit each

This choir consists of up to 60 members (male and female) and focuses on the tradition and heritage of sacred gospel music, spirituals, and hymns. Admittance into this class is based on vocal solo and sight-reading audition. Gospel Choir will focus on healthy vocal technique and performance elements and choreography. After school rehearsals and performances are required and are part of the grade.

**1302300 BAND I**

**1302310 BAND II**

**1302320 BAND III**

**1302330 BAND IV**

**1302340 BAND V (HONORS)**

**1302350 BAND VI (HONORS)**

Prerequisite: Band Director MUST sign registration form for proper placement

1 Performing Fine Art Credit Each Grades: 9-12

Band classes are designed to provide students with instruction in the application of musical and technical skills, as well as the development of aesthetic awareness, through the study, rehearsal and performance of varied band literature. After school rehearsals and performance are required.

**1302500 JAZZ ENSEMBLE I**

**1302510 JAZZ ENSEMBLE II**

Prerequisite: Band Director MUST sign registration form for proper placement

1 Performing Fine Art Credit Each Grades: 9-12

Students with experience on an instrument suited for jazz ensemble explore the fundamentals of performance practices, improvisation, and music theory through a diverse repertoire of high-quality jazz literature. Students learn the basics of foundational jazz styles, use chord symbols, develop knowledge of musical structure, and study the history of jazz and its iconic musicians. Public performances may serve as a culmination of specific instructional goals. Students may be required to attend and/or participate in rehearsals and performances outside the school day to support, extend, and assess learning in the classroom. Students in this class may need to obtain (e.g., borrow, rent, purchase) an instrument from an outside source.

**1300330 ADVANCED PLACEMENT MUSIC THEORY**



Prerequisite: Prior musical training, ability to read notes in treble and bass clef AP

Music Theory Instructor MUST sign registration form

1 Performing Fine Art Credit Grades: 9-12

In this course, students will continue their study of music theory with emphasis in composition, music history, and harmonic and melodic dictation. Students will utilize a combination of learning styles: drill and practice, dictation, sight singing, as well as lecture and demonstration.

## **DANCE**

- 0300400 HUNNY BEAR DANCE TEAM 1ST YR**  
**0300410 HUNNY BEAR DANCE TEAM 2ND YR**  
**0300420 HUNNY BEAR DANCE TEAM 3RD YR**  
**(HONORS)**  
**0300430 HUNNY BEAR DANCE TEAM 4TH YR**  
**(HONORS)**

Prerequisite: AUDITION REQUIRED. Instructor's approval and/or completion of previous course

1 Performing Fine Art Credit Each Grades: 9-12

## **PHYSICAL EDUCATION**

Most Physical Education courses require PE uniforms and athletic shoes. Many of the following courses also involve walking to Central Winds Park adjacent to WSHS.

### **1501300 PERSONAL FITNESS**

Prerequisite: WSHS PE T-shirt and black or purple shorts required.

0.5 Personal Fitness Credit Grades: 10-12

Personal Fitness is designed to provide students with opportunities to develop an individual optimal level of physical fitness acquire knowledge of physical fitness concepts and acquire knowledge of the significance of lifestyle on one's health and fitness.

### **0800320 FIRST AID**

### **1502490 CARE AND PREVENTION OF ATHLETIC INJURIES**

Prerequisite: None

0.5 Elective and  
0.5 Physical Education Credits Grades: 9-12

The first semester of this block will be First Aid, the second semester Care and Prevention. This program is designed for the student who desires to pursue a career in medicine, physical therapy, nursing, athletic training, or other healthcare field. It will cover anatomy, injury types, first aid, wound care, CPR/AED, taping, triaging emergency situations, and detailed evaluation of injuries that occur in athletics and first aid situations. A strong interest in all sciences, especially anatomy is encouraged. Students will benefit from lab situations and hands-on experiences with regard to athletic training. There is a \$5 fee for tape.

### **1503350 TEAM SPORTS 1**

Prerequisite: None

### **1503360 TEAM SPORTS 2**

Prerequisite: Team Sports 1

0.5 Physical Ed Credit Each Grades:9-12

Team Sports provides students with opportunities to acquire knowledge of the strategies of sports play and develop skills in selected competitive team sports while maintaining and/or improving their personal fitness.

### **1504500 TENNIS 1**

Prerequisite: Two cans of tennis balls required

0.5 Physical Education Credit Grades: 9-12

The purpose of this course is to enable students to develop basic-level knowledge of skills in tennis and to maintain or improve health-related fitness.

### **1503310 BASKETBALL 1**

Prerequisite: None

### **1503315 BASKETBALL 2**

Prerequisite: Basketball 1

0.5 Physical Ed Credit Each Grades:9-12

Basketball teaches basic knowledge and fundamental skills and techniques of the game. Emphasis will be placed on techniques, strategies, rules, safety practices, maintaining and/or improving personal fitness and competitive game play.

### **1502410 INDIVIDUAL AND DUAL SPORTS 1**

Prerequisite:None

### **1502420 INDIVIDUAL AND DUAL SPORTS 2**

Prerequisite: IND & DUAL SPORTS 1

### **1502430 INDIVIDUAL AND DUAL SPORTS 3**

Prerequisite: IND & DUAL SPORTS 2

0.5 Physical Ed Credit Each Grades: 9-12

Individual and Dual Sports classes are designed to provide students with opportunities to acquire the knowledge of strategies in individual and dual sports play and develop skill in selected individual and dual sports while maintaining and/or improving their personal fitness. Examples include archery, badminton, racquetball, horseshoes, pickleball and bocce ball.

**1505500 VOLLEYBALL 1**

Prerequisite: None

**1505510 VOLLEYBALL 2**

Prerequisite: Volleyball 1

**1505520 VOLLEYBALL 3**

Prerequisite: Volleyball 2

0.5 Physical Education Credit Each Grades: 9-12

Volleyball provides students with opportunities to acquire knowledge and skills in the sport of volleyball while maintaining and/or improving their personal fitness. Emphasis is on skill development through drills, conditioning and competitive game play.

**1501340 WEIGHT TRAINING 1**

Prerequisite: None

**1501350 WEIGHT TRAINING 2**

Prerequisite: Weight Training 1

**1501360 WEIGHT TRAINING 3**

Prerequisite: Weight Training 2

**1501410 WEIGHT TRAINING 4 (POWER)**

Prerequisite: Weight Training 3

0.5 Physical Education Credit Each Grades: 9-12

Weight Training provides students with opportunities to acquire basic knowledge and skill in weight training. Students will also pursue physical fitness activities, improve muscular strength, and enhance body image

**ATHLETIC TEAM CLASSES**

**Athletic Team Classes are for members of specific sports teams. The coach's approval is required for each semester.**

**These classes can be designated Pass/Fail once the student has met the Physical Education graduation requirement.**

Course codes for this course are designated by grade level and semester. See below:

9TH GRADE SEM 1

1502470 Baseball: VBB

9TH GRADE SEM 2

1502480 Boys Basketball: VB

10TH GRADE SEM 1

1501310 Girls Basketball: VGB

10TH GRADE SEM 2

1501390 Football: VF

11TH GRADE SEM 1

1501320 Girls Volleyball: VV (1st Semester Only)

11TH GRADE SEM 2

1502500 Wrestling: VR

12TH GRADE SEM 1

1501410 Boys and Girls Weightlifting: VWL

12TH GRADE SEM 2

1502430

**YOU DO NOT REGISTER FOR THESE CLASSES. COACHES WILL CREATE CLASS ROSTERS.**

## **EPATHWAYS CAREER PROGRAMS OVERVIEW**

In order to better prepare students to for today's workforce, Seminole County Public Schools has increased the number and diversity of career programs available to students. ePathways Career Programs are organized into three categories: Florida Career and Professional Academies, Career and Technical Education Programs or half-credit career exploration experiences.

All Florida Career and Professional Academy Programs are designed to provide opportunities for students to pursue industry certifications and a comprehensive career preparation experience. Career and Technical Education Programs offer students in-depth exposure to career fields while also providing opportunities for industry certifications. Both Career and Professional Academy Program and Career and Technical Education programs are taught by teachers who meet regularly with business partners in the industry who also hold the industry certifications being offered. In order to maximize learning and career preparation, students should enroll in a Career Academy or Career and Technical Education Program whenever possible. Participation in these programs can help prepare students to pursue the CAPE Gold Seal Scholar Designation and Scholarship (more information about this program can be obtained from your school counselor).

### **THE CULINARY ARTS ACADEMY**

Description: This program covers the history of the food service industry and careers in that industry. Also covers safety in the workplace; employability skills; leadership/teamwork skills; care and use of commercial culinary equipment; basic food science; basic nutrition; and following recipes in food preparation labs.

#### **8800510 CULINARY ARTS I**

Prerequisite: None

0.5 Elective Credit

Grades: 9-10

This course covers the history of the food service industry and careers in that industry. Also covered are safety in the workplace; employability skills; leadership/teamwork skills; care and use of commercial culinary equipment; basic food science; basic nutrition; and following recipes in food preparation labs.

#### **8800520 CULINARY ARTS II**

Prerequisite: Culinary I

0.5 Practical Art Credit

Grades: 10-11

In this course students will learn state mandated guidelines for food service; how to attain food handler training certification; and perform front-of-the-house and back-of-the-house duties. Students will prepare quality food products and present them creatively; demonstrate safe, sanitary work procedures; understand food science principles related to cooking and baking; and utilize nutrition concepts when planning meals/menus. Students will take the ServSafe and NRFSP Food Safety Manager Certifications.

#### **8800530 CULINARY ARTS III HON**

Prerequisite: Culinary II

0.5 Practical Art Credit

Grades: 11-12

In this course the student will research career opportunities in professional cooking/baking; follow guidelines on food selection, purchasing, and storage; and use communication skills. Students will prepare and present a variety of advanced food products; create centerpieces; and research laws specific to the hospitality industry. Also covered are management skills; how to develop a business plan; and utilization of technology in the workplace. Students will be knowledgeable about food safety manager training/certification training programs that are acceptable in Florida.

#### **8800540 CULINARY ARTS IV HON**

Prerequisite: None

0.5 Elective Credit

Grades: 9-10

This course provides opportunities for students to apply their acquired knowledge and skills in culinary related scenarios.



## THE DESIGN ACADEMY

### DIGITAL DESIGN PATH

Description: This program prepares students for employment in digital publishing positions, such as Information Technology Assistants, Production Assistants, Digital Assistant Designers, Graphic Designers, and Multi-Media Designers. The content includes, but is not limited to, enhanced practical experiences in computer-generated art and text, graphic design, graphic production, digital design skills, preparation of digital layouts and illustrations, scanning, and the development of specialized multimedia presentations.

#### **8209020 DIGITAL INFORMATION TECHNOLOGY**

Prerequisite: None

1 Elective Credit

Grades: 9-12

This course is designed to provide an introduction to information technology concepts and careers as well as the impact information technology has on the world, people and industry. Students will prepare for and take globally recognized Microsoft Office Specialist (MOS) certifications in Word, Excel, and PowerPoint. This course BUILDS (not repeats) on knowledge learned in middle school. Previous computer courses are not required to take this course.

#### **8209510 DIGITAL DESIGN I**

Prerequisite: Digital Information Technology or Teacher Approval

1 Performing Fine Art Credit

Grades: 9-12

Students will learn to electronically create and publish newsletters, flyers, greeting cards, calendars, brochures, stationery and more in this multi-software course. Also, they will participate in a work-based learning experience (Photoshop, InDesign, & Illustrator software). Industrial Certificate in Adobe Photoshop and Illustrator can be accomplished at the end of this class. HIGHLY Recommended for anyone wanting to work on yearbook staff.

#### **8209520 DIGITAL DESIGN II (HONORS)**

Prerequisite: Digital Design I

1 Performing Fine Art Credit

Grades: 10-12

This course involves advanced electronic applications in creating and publishing real projects for teachers and staff such as tests, study guides, forms, certificates, programs, and much more. Students must have a "can-do" attitude and be able to work independently, cooperatively, and with confidentiality. Industrial Certificate in Adobe InDesign and/or Animator can be accomplished at the end of this class.

#### **8209530 DIGITAL DESIGN III (HONORS)**

Prerequisite: Prerequisite: Digital Design

1 Performing Fine Art Credit

Grades: 11-12

This course continues the development of industry-standard skills required for careers in the digital publishing industry. The content includes the use of a variety of software and equipment to perform digital publishing and digital imaging activities. Industrial Certificate in Adobe Dreamweaver can be accomplished at the end of this class.

#### **8209540 DIGITAL DESIGN IV (HONORS)**

Prerequisite: Digital Design III

1 Performing Fine Art Credit

Grades: 12

This course continues the development of industry standard skills required for careers in the digital publishing industry. The content includes the use of a variety of software and equipment required to perform digital publishing and digital imaging activities. Students will work on state-of-the-art computers and software. Students will learn skills useful for personal applications such as college/business computer presentations as well as be prepared for full or part-time employment in the advertising and internet industry.

#### **DIG 2000 DUAL ENROLLMENT: INTRODUCTION TO DIGITAL MEDIA**



Prerequisite: Digital Design I and 2.5 GPA or Applied Technology teacher approval

1 Elective Credit

Grades: 11-12

Student will receive 3 college credits and high school credit. This course is taken at WSHS and counts like an AP class for GPA. This course explores the avenues of contemporary digital design, highlighting the importance of process, innovation and communication. Students will become familiar with design projects, ranging from traditional print,



sophisticated Web sites, interactive digital media and motion graphics. The course will focus on developing and refining the design concept and the execution strategy (Photoshop, InDesign, & Illustrator software). Industrial Certificate in Adobe InDesign, Illustrator or Photoshop can be accomplished at the end of this class.

**GRA 2101 DUAL ENROLLMENT:  
BITMAP GRAPHICS -  
DUAL ENROLLMENT with SSC**



Prerequisite: Digital Design I & 2.5 GPA  
or Applied Technology teacher approval

1 Elective Credit Grades: 11-12

Student will receive 3 college credits as well as high school credit. This course is taken at WSHS and counts like an AP class for GPA. This course is an introduction to Photoshop software which provides an extensive variety of electronic tools for manipulating photographs and creating illustrations. The course is designed for the graphics individual who wishes to integrate photography with page layouts. Students will learn the basics of scanning, retouching, color correcting, proofing and output to printer devices. Industrial Certificate in Adobe Photoshop can be accomplished at the end of this class.

**DIGITAL MEDIA PATH**

Description: Students will learn the use of the advanced camera controls and how to edit and print their photographs using Adobe Photoshop. Students will also learn the basic elements of studio lighting for portrait photography as well as indoor and outdoor sports photography. Industrial Certificate in Adobe Photography can be accomplished at the end of this class. Highly recommended that you have a camera.

**8201310 DIGITAL PHOTOGRAPHY 1**

Prerequisite: None  
1 Elective Credit Grades: 9-12

This course provides competencies in photographic history, the production process, intellectual property rights, camera systems, support equipment, basic photography and workflow applications. Students will learn the use of the primary camera controls and how to edit and print their photographs using

Adobe Photoshop. Students will also learn the basic elements of outdoor natural light and outdoor sports photography. Industrial Certificate in Adobe Photoshop CC can be accomplished at the end of this class. Highly recommended for anyone wanting to work on the yearbook staff. Yearbook photographers should sign up for this class.

**8201320 DIGITAL PHOTOGRAPHY 2**

Prerequisite: ACA Adobe Photoshop Certified  
1 Elective Credit Grades: 10-12

Students will learn the use of the advanced camera controls and how to edit and print their photographs using Adobe Photoshop. Students will also learn the basic elements of studio lighting for portrait photography as well as indoor and outdoor sports photography. Industrial Certificate in Adobe Photography can be accomplished at the end of this class. Highly recommended that you have a camera.

**8201330 DIGITAL PHOTOGRAPHY 3**

Prerequisite: ACA Adobe Photoshop Certified  
1 Elective Credit Grades: 11-12

Students will learn the use of the advanced camera controls and how to edit and print their photographs using Adobe Photoshop & Premiere Pro. Students will also learn the advanced elements of studio lighting for portrait photography as well as indoor and outdoor sports photography. Basics of Drone Photography will be incorporated in this class. Industrial Certificate in Adobe, InDesign, Premiere Pro and Illustrator can be accomplished at the end of this class. Highly recommended that you have a camera.

**8201340 DIGITAL PHOTOGRAPHY 4**

Prerequisite: ACA Adobe Photoshop Certified  
1 Elective Credit Grades: 11-12

Students will learn the use of the advanced camera controls and how to edit and print their photographs using Adobe Photoshop & Premiere Pro. Advanced Drone Photography will be incorporated in this class. Industrial Certificate in Adobe, InDesign, Premiere Pro and Illustrator can be accomplished at the end of this class. Highly recommended that you have a camera.

## WEB DESIGN PATH

### **8209020      DIGITAL INFORMATION TECHNOLOGY**

Prerequisite: None

1 Elective Credit

Grades: 9-12

This course is designed to provide an introduction to information technology concepts and careers as well as the impact information technology has on the world, people and industry. Students will prepare for and take globally recognized Microsoft Office Specialist (MOS) certifications in Word, Excel, and PowerPoint. This course BUILDS (not repeats) on knowledge learned in middle school. Previous computer courses are not required to take this course

### **9001110      FOUNDATIONS OF WEB DESIGN I**

Prerequisite: Digital Information Technology or Teacher Approval

1 Performing Fine Art Credit

Grades: 9-12

This course is designed to provide a basic overview of the Internet, Intranet and WWW. The content includes operating systems; basic HTML commands; navigation of the Internet, Intranet and Web; and Web page design (Photoshop, Dreamweaver, Premier Pro & Flash software). Industrial Certificate in Adobe Photoshop, Dreamweaver, Premier Pro or Flash can be accomplished at the end of this class for 11th and 12th grade students.

### **9001120      USER INTERFACE DESIGN (HONORS)**

Prerequisite: Foundations of Web Design I & Industrial Certificate in Adobe Photoshop

1 Performing Fine Art Credit

Grades: 10-12

This course provides advanced concepts for Internet, Intranet, and Web design. The content includes Internet tools, Web site promotion, advanced HTML commands, Cascading Style Sheets, advanced page design, and multimedia applications (Photoshop, Dreamweaver, Premier Pro & Illustrator software). Industrial Certificate in Adobe Dreamweaver, Premier Pro or Flash can be accomplished at the end of this class for 11th and 12th grade students.

### **9001130      WEB SCRIPTING FUNDAMENTALS (HONORS)**

Prerequisite: Web Design II

1 Performing Fine Art Credit

Grades: 11-12

This course provides advanced concepts in layout and design theory. The content includes use of advanced functions of Adobe Dreamweaver, Flash and Fireworks. Industrial Certificate in Adobe Dreamweaver, Premier Pro or Flash can be accomplished at the end of this class for 11th and 12th grade students.

### **9001140      MEDIA INTEGRATION ESSENTIALS (HONORS)**

Prerequisite: Web Design III

1 Performing Fine Art Credit

Grade: 11-12

This course is designed to achieve proficiency in industry standard web graphic applications. The content includes use of advanced functions of Adobe Dreamweaver, Flash, Fireworks and Adobe Photoshop. Industrial Certificate in Adobe Dreamweaver or Flash can be accomplished at the end of this class for 11th and 12th grade students.

## THE TV PRODUCTION ACADEMY

Description: This program prepares students for initial employment as television production operators, television broadcast technicians, camera operators, other professional/para-professional technicians, video recording engineers, and audio recording engineers.

### **8201510      TELEVISION PRODUCTION I**

Prerequisite: C average in English recommended

1 Performing Fine Art Credit

Grades: 9-10

Television Production I is designed to introduce students to television production techniques. The content will include television history and its role in mass media, different styles of script copy, television/videotape formats and their uses from broadcast to home applications. Students will be introduced to a variety of production roles and basic equipment use including lighting, audio and video recording systems. Students will also be introduced to studio facilities and basic editing techniques.

**8201520 TELEVISION PRODUCTION II**

Prerequisite: TV Production I, Instructor's approval  
 1 Performing Fine Art Credit Grades: 10-11

Television Production II is designed to be a follow-up to TV Productions I. Students will refine the application of theories learned in TV Production I. In addition, students will be exposed to advanced camera techniques, studio operations, and lighting techniques. Post-production techniques will be elaborated, including post-production audio, assemble and insert editing and advanced script writing. Industrial certification in Premier Pro can be accomplished in this class.

**8772130 TELEVISION PRODUCTION III**

Prerequisite: TV Production I and II, Instructor's approval  
 1 Elective Credit Grades: 11-12

Television Production III is a follow-up course to TV Production I and II. Detailed operation of studio equipment will be offered. This will include editing with special effects, character generation, audio control systems, as well as, more elaborate field production techniques. Industrial certification in Premier Pro can be accomplished in this class.

**8772140 TELEVISION PRODUCTION IV**

Prerequisite: TV Production I, II, III,  
 Instructor's approval  
 1 Elective Credit Grades: 11-12

Television Production IV is a follow-up course to TV Production I, II, and III. Detailed editing techniques, special effects packages (including computer animation, paint box and morphing) is offered. Production is the main focus of TV Production IV.

**8772150 TELEVISION PRODUCTION V**

Prerequisite: Instructor's approval  
 1 Performing Fine Art Credit Grades: 11-12

This course will concentrate on the area of post-production and special effects creation centering around the program Final Cut Pro.

**THE BUSINESS ACADEMY**

Description: This program offers a sequence of courses that provides coherent and rigorous content aligned with challenging academic standards and relevant technical knowledge and skills needed to prepare for further education and careers in the Business Management and Administration career cluster

**8209020 DIGITAL INFORMATION TECHNOLOGY**

Prerequisite: None  
 1 Elective Credit Grades: 9-12

This course is designed to provide an introduction to information technology concepts and careers as well as the impact information technology has on the world, people and industry. Students will prepare for and take globally recognized Microsoft Office Specialist (MOS) certifications in Word, Excel, and PowerPoint. This course BUILDS (not repeats) on knowledge learned in middle school. Previous computer courses are not required to take this course

**8212110 ADMIN OFFICE TECHNOLOGY**

Prerequisite: None  
 1 Elective Credit Grades: 9-12

This course is designed to expand on the concepts and computer application programs introduced in Digital Information Technology. Students will continue to improve their knowledge and computer skills in word processing, spreadsheets, databases, email, Internet browsers, multimedia presentations, web publishing and digital publishing. Students will complete Industrial Certificate in Microsoft Office Specialist Master.

## **NON-ACADEMY CAREER AND TECHNICAL COURSES**

### **8207210 PC SUPPORT**

Prerequisite: Network Specialist Approval  
1 Elective Credit Grades: 10-12

This course focuses on system support, maintenance, and basic network concepts. The content includes computer software and hardware applications, basic networking including physical and logical network connectivity; and effective behaviors that contribute to customer satisfaction.

### **8703120 HOSPITALITY AND TOURISM 3**

Prerequisite: Hospitality 2  
1 Elective Credit Grades: 11-12

This course is an extension of the previous Hospitality courses building on the skills taught. Students will be directly involved in event planning and event marketing.

### **8800420 HOSPITALITY AND TOURISM 4**

Prerequisite: Hospitality 3  
1 Elective Credit Grade: 12

The Hospitality and Tourism Internship course provides students the opportunity to demonstrate human relations, communications, and employ ability skills necessary for entry-level employment in the travel and tourism industry. Additionally, it will enhance the instruction and competencies developed through classroom instruction.

### **8200410 BUSINESS COOPERATIVE EDUCATION (OJT)**

Prerequisite: None  
0.5 Elective Credit Grades: 11-12

This program offers a sequence of courses that provides coherent and rigorous content aligned with challenging academic standards and relevant technical knowledge and skills needed to prepare for further education and careers in the Business Management and Administration cluster; provides technical skill proficiency, and includes competency-based applied learning that contributes to the academic knowledge, higher-order reasoning and problem-solving skills, work attitudes, general employability skills, technical

skills, and occupation-specific skills. Students will need to obtain a part-time job that provides them with a taxable paycheck.

## **GENERAL ELECTIVES**

### **1801300 JROTC LEADERSHIP EDUCATION/ TRAINING I**

Prerequisite: None

### **1801310 JROTC LEADERSHIP EDUCATION/ TRAINING II**

Prerequisite: JROTC I

### **1801320 JROTC LEADERSHIP EDUCATION/ TRAINING III**

Prerequisite: JROTC II

### **1801330 JROTC LEADERSHIP EDUCATION/ TRAINING IV**

Prerequisite: JROTC III  
1 Elective Credit Each Grades: 9-12

The Army JROTC program is a four-year program that affords students the opportunity for leadership development by emphasizing a strong sense of integrity, responsibility, respect for others, insight into ethical values and principles, the ability to live and work with others and respect for constitutional authority. The Leadership Education and Training (LET) complements the overall educational program and gives the students the opportunity to occupy leadership positions within the corps of cadets. The courses of instruction are not for the purpose of recruiting or training soldiers. No cadet incurs a military obligation of any sort. The mission of the JROTC program is to motivate young people to be better Americans. All students must possess a sincere intent to participate and comply with the rigorous requirements of the program or they will not satisfactorily complete this program of instruction. The benefits of advanced military promotions, if entering the services, and military scholarships for college are only awarded to those students truly earning them.

### **2400300 LEADERSHIP I**

### **2400310 LEADERSHIP II**

### **0500520 LEADERSHIP III**

### **0500530 LEADERSHIP IV**

Prerequisite: Application required and school election opportunity  
1 Elective Credit Each Grades: 9-12

Leadership class is comprised of students who hold leadership positions on campus. The members of this class are involved in planning and organizing most student activities on campus. This class requires a significant amount of time outside of school as well as some field- trip time during school hours. Activities may include, but are not limited to, membership in School Improvement and School Advisory Council, Student Congress, Adopt-a-Road, and District Student Government. Student assessment will be based on the performance and successful completion of the aforementioned activities. This course also requires the dress code of the executive business world on certain occasions. This course will be offered pass/fail to students with a GPA of 4.0 and above. All other students will receive their earned letter grade in the course unless otherwise requested in writing by the student.

**SLS1301C LIFE AND CAREER PLANNING**

Prerequisite: 2.5 or higher and a PERT score  
0.5 Elective Credit Grade: 9-12

Life/Career Planning is a course designed to assist students with the lifelong process of career development. Students will participate in a variety of experiences as a group and individually. The coursework is designed to help students identify and examine their interests, personality, values, self-esteem, critical thinking skills and to use this increased self-awareness to make decisions about majors and careers. This course will emphasize that making an occupational career choice is a never-ending process subject to and affected by one’s personal maturity and environmental changes. Life/Career Planning is a three-credit course that applies as an elective towards the Associate in Arts degree. Students must have an SAT, ACT or PERT score and must meet the criteria for Academic Dual Enrollment in order to sign up (3.0 unweighted GPA).

**2104350/2104360 TEACHER/OFFICE ASSISTANT I**  
(Semester 1/2)

**1700380/14003300 TEACHER/OFFICE ASSISTANT II**  
(Semester 1/2)

Prerequisite: 3.0 GPA  
0.5 Elective Credit Each Grades: 11-12

This course is a supervised on-site experience at WSHS. Students will assist teachers/administrators in both academic and problem- oriented situations. Weekly supervision and evaluation will be done by the supervising teacher/administrator.

**1400300 PEER COUNSELING 1**

Prerequisite: Application, 2.5 GPA

**1400310 PEER COUNSELING 2**

Prerequisite: Peer Counseling 1, application  
0.5 Elective Credit each Grades: 10-12

The core of peer Counseling addresses skill building in communication, problem solving and decision making. Through assignments, role playing and skill building activities, peer counselors are trained to help their fellow students. Students who wish to enroll in Peer Counseling 1 need two teacher recommendation forms.

**1400320 ACADEMIC LAB**

Prerequisite: 3.0 Cumulative GPA, Co-enrolled in AP Coursework, Administrative Approval Required  
1 Elective Credit Grades: 11-12

Students in this course will serve as tutors and paper-readers for other WSHS students. This course is offered for pass/fail credit.

**1400300M/W YOUNG MEN/WOMEN OF EXCELLENCE**

Prerequisite: Teacher Recommendation  
1 Elective Credit Grades: 9-12

This course is designed to help minority students grow their leadership potential. Students will partake in character-building curriculum, volunteer within the community, and have college and career experiences.

**1400340 PEER INCLUSION TEAM (PIT CREW)**

Prerequisite: None  
1 Elective Credit Grades: 10-12

This course is designed to provide reciprocal academic and social benefits to students with disabilities and their peers without disabilities.

Students enrolled in this course will learn and apply knowledge and skilled practices in the areas of academic engagement, communication, social barriers, leadership, problem solving, and other disability-related topics such as historical perspectives, inclusion, Universal Design for Learning, person-first language, presumed competence, social justice for minority populations, and media representation of diverse people.

### **2200330 AP STUDY HALL**

Prerequisite: Current enrollment in 4 AP classes

0 Credit

Grades: 11-12

This is a non-credit study hall for the committed AP student. It is only offered 1st and 7th period and may be approved as off-campus.

### **VOLUNTEER SERVICE**

Prerequisite: None

0.5 Elective Credit

Grades: 9-12

Students, do not put this on your registration card. All forms needed for Community Service are located on the WSHS website under "Guidance." You need to consult your Guidance Counselor before starting this program so that you may receive the appropriate credit. This course will develop an appreciation of the concept of community service. This program will satisfy the community service requirement for the Florida Academic Scholars Award for Bright Futures. Refer to the WSHS website or the Guidance office for forms and additional information. This course will be offered pass/fail to students with a GPA of 4.0 and above. All other students will receive their earned letter grade in the course unless otherwise requested in writing by the student.

### **PLATO**

PLATO is a performance-based computer-assisted instruction program designed for students who have not been academically successful in a traditional high school setting and/or have been identified as potential high school dropouts. These students take

core academic instruction (English, Math, Science and Social Studies) self-paced via special computer programs. Electives and non-core academic classes are taken in traditional classes at Winter Springs High School. By design, this program provides students the opportunity to earn the credits required for a standard high school diploma. Eligibility: Candidates for PLATO must meet at least one of the following criteria:

1. Student has been retained at least one time and/or behind in credits.
2. Student has two or more "D's" or "F's" for the most current grading period.
3. Student has a cumulative GPA below 2.0.
4. Student is two or more years older than the average age for the grade level.
5. Student has a personal or family concern documented which interferes with academic success.

### **1900310 DRIVER EDUCATION (AFTER SCHOOL PROGRAM)**

Prerequisite: Students must be 15 years old and hold a valid Learner's permit; application required.

0.5 Elective Credit

An after school driver education program is offered each semester at Lyman, Seminole and Winter Springs High Schools. The program includes classroom instruction, range driving and on the road driving. Students must hold a valid Florida Learner's License to be eligible for the program. Students that successfully complete the program earn .5 credit. The program is open to all students in Seminole County regardless of the high school that they attend. Students attend classes two days a week, either Monday and Wednesday or Tuesday and Thursday from 3:15-5:15 PM. Transportation is not provided. There is no cost for the program. Applications are available at the high schools.

\* This program is a collaborative effort between Seminole County Government, the municipalities; METROPLAN Orlando and Seminole County Public Schools in an effort to better prepare our teen drivers and enhance the safety on our roadways.

Please consult the SCPS Student Progression Plan

for information on waivers for the requirements for physical education, fine arts and specific science courses prior to registration.

## **EXCEPTIONAL STUDENT SERVICES**

High School Graduation Requirements for Students with Disabilities

Beginning with the 9th Grade Cohort in 2014-15, the option to receive a Special Diploma for Exceptional Student Education students with disabilities will no longer be available. Students who entered grade nine before 2014-15 school year and whose individual educational plan (IEP) as of June 20, 2014 contained a statement of intent to receive a special diploma may continue to work toward a special diploma. Diploma options will be discussed at the student's Transition IEP meeting in order to make decisions on the various pathways available to students with disabilities including students with disabilities for whom the IEP team has determined that participation in Florida Alternate Assessment is the most appropriate measure of the student's skills.

## **SERVICES**

All ESE services require staffing eligibility. The following services are available as staffed by the district office:

Specific Learning Disabilities, Gifted, Autism Spectrum Disorder, Intellectual Disabilities, Emotional Behavioral Disabilities, Deaf and

Hard of Hearing, Visually Impaired, Speech and Language Therapy, Occupational Therapy, Physical Therapy.

Levels of support include:

**Consultation** - for students who are not enrolled in ESE classes but have an ESE teacher 'check in" with his/her regular education team monthly to monitor progress.

**Social Personal Skills** - a daily course that offers a variety of interactions between teacher and students that help the students visualize their responsibilities at school, home, and in today's society. A few major concepts are conflict resolution, appropriate classroom behavior, communication, social and personal development, and responsibility.

**Support Facilitation** - a less restrictive service in which an ESE teacher supports a general education teacher on a scheduled weekly basis to support instruction and student learning.

**Resource Instruction** - for students with skill levels significantly below grade level. The ESE teacher teaches general curriculum standards with extensive accommodations and modifications in a smaller group setting to achieve student mastery of academic skills. Course names and numbers will provided by the student's guidance counselor.



<b>Minimum Support Consultation</b>	<b>Moderate Support Support Facilitation/ Learning Strategies</b>	<b>Maximum Support Special Diploma</b>
General Education teacher is the primary source of instruction and/or contact	General Education teacher is the primary source of instruction and/or contact	Exceptional Student Education content classes taught by ESE teacher(s)
Focus is on General Education curriculum and state benchmarks. Student plans to attend college, technical school for military for further education	Focus is on General Education curriculum and state benchmarks. Student plans to attend college, technical school for military for further education	Focus is on Special Education curriculum and state benchmarks in extensively accommodated/ modified small group setting. Students plan to go to a tech school or go directly into a job after high school
Student academically working and performing independently at or above grade level	Student academically working and performing near, at, or above grade level	Student academically working and performing significantly below current grade level with little or no yearly progress on FCAT
Student consistently/ accurately completes assigned work with limited to no accommodations	Student completes majority of assigned grade level work with and without accommodations	Student has difficulty completing (grade level and other) assigned work even with accommodations.

## HIGH SCHOOL PLANNING GUIDE

	Required credits for graduation	Recommended credits for college	Grade 9	Grade 10	Grade 11	Grade 12
<b>English</b>	4	4	English 1	English 2	English 3 or AP Lang	English 4 or AP Lit
<b>Mathematics (taken in HS)</b>	4	4				
<b>Science</b>	4	4	Biology 9 or Env Science			
<b>Social Studies</b>	3	4		World History	US History	Government/ Economics
<b>Personal Fitness</b>	0.5	0.5				
<b>Physical Ed elective</b>	0.5	0.5				
<b>Performing Fine Arts</b>	1	1				
<b>World Language</b>		2-3				
<b>Electives</b>	9	6				
<b>TOTAL</b>	26	26				

Additional Requirements:  
 Passing Scores on State Exams  
 Cumulative GPA of 2.0

# INDEX

<u>Acting</u> .....	52	<u>AP US History</u> .....	46
<u>Algebra I</u> .....	38	<u>AP World History</u> .....	45
<u>Algebra II</u> .....	39	<u>Art 2D</u> .....	50
<u>American Government</u> .....	46	<u>Art 3D</u> .....	51
<u>American Sign Language</u> .....	50	<u>Band</u> .....	54
<u>Analysis of Functions</u> .....	40	<u>Basketball</u> .....	55
<u>Anatomy and Physiology</u> .....	44	<u>Biology I</u> .....	42
<u>AP Art Drawing</u> .....	51	<u>Calculus</u> .....	40
<u>AP Art History</u> .....	52	<u>Chemistry</u> .....	43
<u>AP Biology</u> .....	42	<u>Chorus</u> .....	53
<u>AP Calculus AB/BC</u> .....	40	<u>Creative Photography</u> .....	52
<u>AP Chemistry</u> .....	43	<u>Culinary Arts</u> .....	57
<u>AP Computer Science A</u> .....	41	<u>Dance Techniques</u> .....	55
<u>AP Computer Science Principals</u> .....	41	<u>Develop Language Arts ESOL</u> .....	37
<u>AP English Language</u> .....	36	<u>Digital Design</u> .....	58
<u>AP English Literature</u> .....	36	<u>Digital Info Technology</u> .....	58
<u>AP Environmental Science</u> .....	42	<u>Digital Photography</u> .....	59
<u>AP European History</u> .....	47	<u>Drawing</u> .....	50
<u>AP French Lang and Culture</u> .....	48	<u>Driver Education</u> .....	64
<u>AP Human Geography</u> .....	47	<u>Dual Enrollment Alt. Energy Sources</u>	
<u>AP Latin</u> .....	49	<u>ETP2502</u> .....	44
<u>AP Macroeconomics</u> .....	46	<u>Bitmap Graphics</u>	
<u>AP Music Theory</u> .....	54	<u>GRA2201</u> .....	59
<u>AP Physics C Mechanics</u> .....	44	<u>Intro to Digital Media</u>	
<u>AP Physics</u> .....	43	<u>DIG2000</u> .....	58
<u>AP Psychology</u> .....	47	<u>Intro to Solar Energy</u>	
<u>AP Research Capstone</u> .....	35	<u>ETP2410</u> .....	45
<u>AP Seminar Capstone</u> .....	35	<u>Life/Career Planning</u>	
<u>AP Spanish Lang and Culture</u> .....	49	<u>SLS1301C</u> .....	63
<u>AP Spanish Lit and Culture</u> .....	49	<u>Programming in Java</u>	
<u>AP Statistics</u> .....	40	<u>COP2800</u> .....	41
<u>AP Study Hall</u> .....	64	<u>Solar Thermal Systems</u>	
<u>AP US Government</u> .....	47	<u>ETP2420</u> .....	45
		<u>Ecology</u> .....	44
		<u>Economics with Financial Lit</u> .....	46
		<u>English ESOL</u> .....	37
		<u>English I-IV</u> .....	35
		<u>Environmental Science</u> .....	42

<b><u>Experimental Science</u></b> .....	44	<b><u>Teacher/Office Assistant</u></b> .....	63
<b><u>First Aid/Care &amp; Prevention of Athletic Injuries</u></b> .....	55	<b><u>Team Sports</u></b> .....	55
<b><u>French</u></b> .....	48	<b><u>Television Production</u></b> .....	60
<b><u>Geometry</u></b> .....	38	<b><u>Tennis</u></b> .....	55
<b><u>Guitar</u></b> .....	53	<b><u>Theatre</u></b> .....	52
<b><u>Hospitality and Tourism</u></b> .....	62	<b><u>Trigonometry</u></b> .....	40
<b><u>Hunny Bear Dance Team</u></b> .....	55	<b><u>United States History</u></b> .....	45
<b><u>Individual and Dual Sports</u></b> .....	55	<b><u>Volleyball</u></b> .....	56
<b><u>Instrumental Techniques</u></b> .....	54	<b><u>Web Design</u></b> .....	60
<b><u>Introduction To Drama</u></b> .....	52	<b><u>Weight Training</u></b> .....	56
<b><u>Jazz Ensemble</u></b> .....	54	<b><u>World History</u></b> .....	45
<b><u>JROTC</u></b> .....	62	<b><u>Yearbook</u></b> .....	37
<b><u>Latin</u></b> .....	48		
<b><u>Leadership</u></b> .....	62		
<b><u>Liberal Arts Math</u></b> .....	39		
<b><u>Math for College Success</u></b> .....	39		
<b><u>Musical Theater</u></b> .....	53		
<b><u>Newspaper</u></b> .....	37		
<b><u>OJT</u></b> .....	62		
<b><u>Painting</u></b> .....	50		
<b><u>PC Support</u></b> .....	62		
<b><u>Peer Counseling</u></b> .....	63		
<b><u>Personal Fitness</u></b> .....	55		
<b><u>Physical Science</u></b> .....	42		
<b><u>Physics</u></b> .....	43		
<b><u>PLATO</u></b> .....	64		
<b><u>Portfolio 3D</u></b> .....	51		
<b><u>Portfolio Art Drawing</u></b> .....	51		
<b><u>Portfolio Photography</u></b> .....	52		
<b><u>Pre-Calculus</u></b> .....	40		
<b><u>Probability and Statistics</u></b> .....	40		
<b><u>Programming Essentials</u></b> .....	41		
<b><u>Psychology</u></b> .....	47		
<b><u>Renewable Energy Honors</u></b> .....	44		
<b><u>Sculpture</u></b> .....	51		
<b><u>Spanish</u></b> .....	49		
<b><u>Stagecraft</u></b> .....	53		

# WINTER SPRINGS HIGH SCHOOL LOCATOR MAP

