

Week 6 Homework

Assignment due Friday!!

Solve each equation.

1) $4x - 5 - 1 = 10$

$x = 4$

3) $-\frac{5}{4}p + \frac{3}{5}p = -\frac{13}{12}$

$p = 5/3$

5) $4(6x - 3) = -108$

$x = 4$

7) $48 = -6(3n - 4) + 3(n + 3)$

$n = -1$

9) $5r = r + 4$

$r = 1$

11) $-5x - 9 = -5(x + 3)$

No Solution

Name

Answers Only

Date

Period

2) $18 = 3x - 6x$

$x = -6$

4) $-\frac{1}{2}x + \frac{3}{2} - \frac{3}{2}x = \frac{1}{6}$

$x = 2/3$

6) $-102 = -6(6p + 5)$

$p = 2$

8) $-(2m + 1) - 5(-1 + 3m) = -13$

$m = 1$

10) $12 - 6a + 4a = a + 3$

$a = 3$

12) $-30 - 4m = -4(m + 6) - 6$

IMS

- 13) Perry won 45 super bouncy balls playing horseshoes at the county fair. At school he gave two to every student in his math class. He only has 3 remaining. How many students are in his class?

21 students

- 15) You had \$21 to spend on two notebooks. After buying them you had \$17. How much did each notebook cost?

\$2 for each notebook

- 17) You had \$23.70 to spend on two raffle tickets. After buying them you had \$17.90. How much did each raffle ticket cost?

\$2.90 for each raffle ticket

- 19) The Cooking Club made some pies to sell during lunch to raise money for a field trip. The cafeteria helped by donating two pies to the club. Each pie was then cut into five pieces and sold. There were a total of 45 pieces to sell. How many pies did the club make?

$p = 7$
7 pies

- 14) Jimmy rented a bike from Krystal's Bikes. It cost \$18 plus \$6 per hour. If Jimmy paid \$60, then he rented the bike for how many hours?

7 hours

- 16) 219 students went on a field trip. Four buses were filled and 27 students traveled in cars. How many students were in each bus?

Each bus was 48 students

- 18) Castel spent half of his weekly allowance playing mini-golf. To earn more money his parents let him clean the gutters for \$5.46. What is his weekly allowance if he ended with \$12.66?

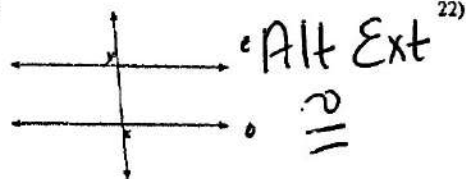
allowance was \$14.40

- 20) Krystal wanted to make note cards by cutting pieces of paper in half. Before starting she got four more pieces to use. When she was done she had 28 half-pieces of paper. With how many pieces did she start?

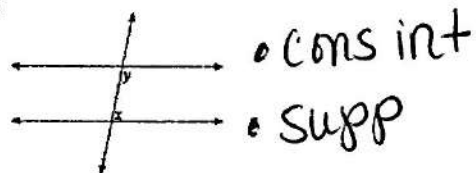
Started with 10 pieces

Identify the type of angle pair and the relationship.

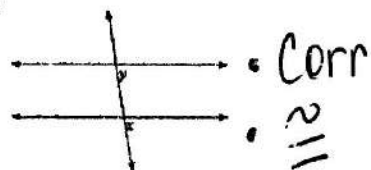
21)



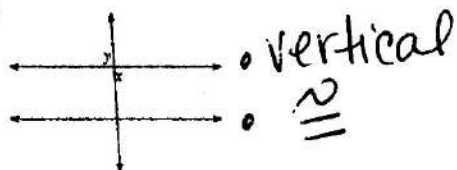
22)



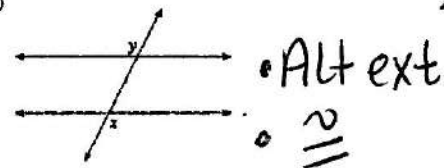
23)



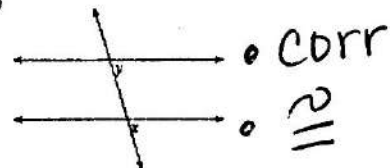
24)



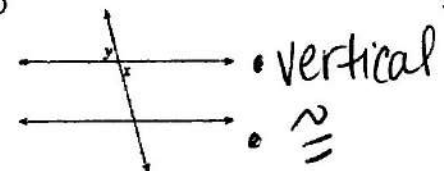
25)



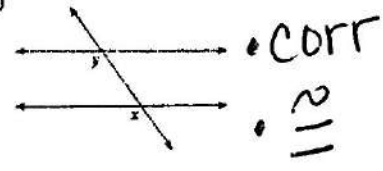
26)



27)

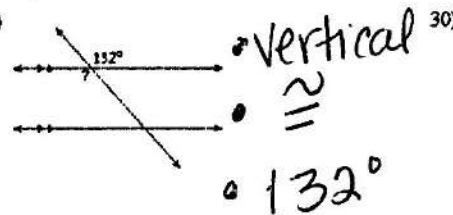


28)

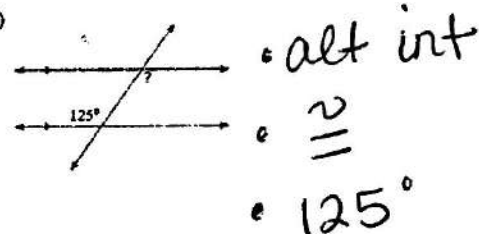


Identify the type of angle pair, the relationship, and the measure of the missing angle.

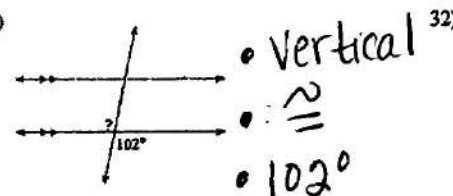
29)



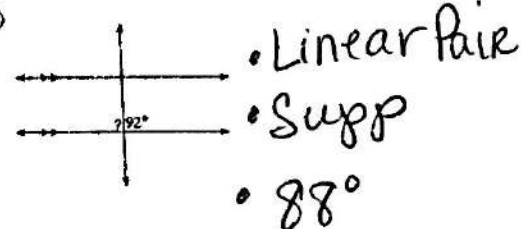
30)



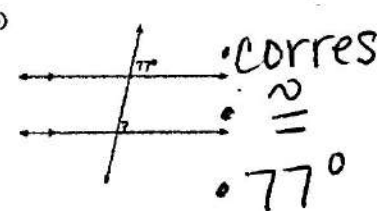
31)



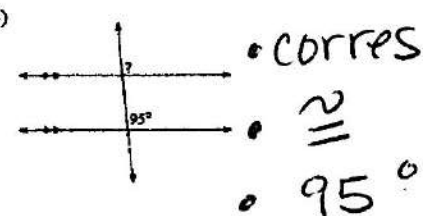
32)



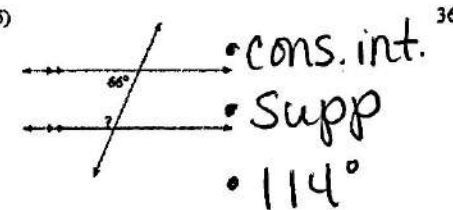
33)



34)



35)



36)

