



# Monsoon Asia Lab Activity

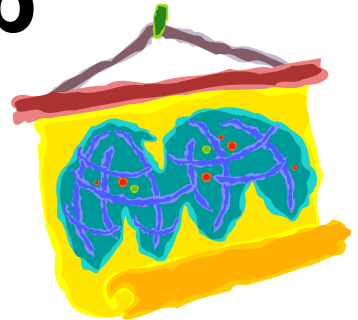


**Look carefully at each map on your desks.  
For each map, discuss the three questions  
below with your partners.**

**•What are at least five key symbols or  
colors on the map?**

**•What key information does this map  
show?**

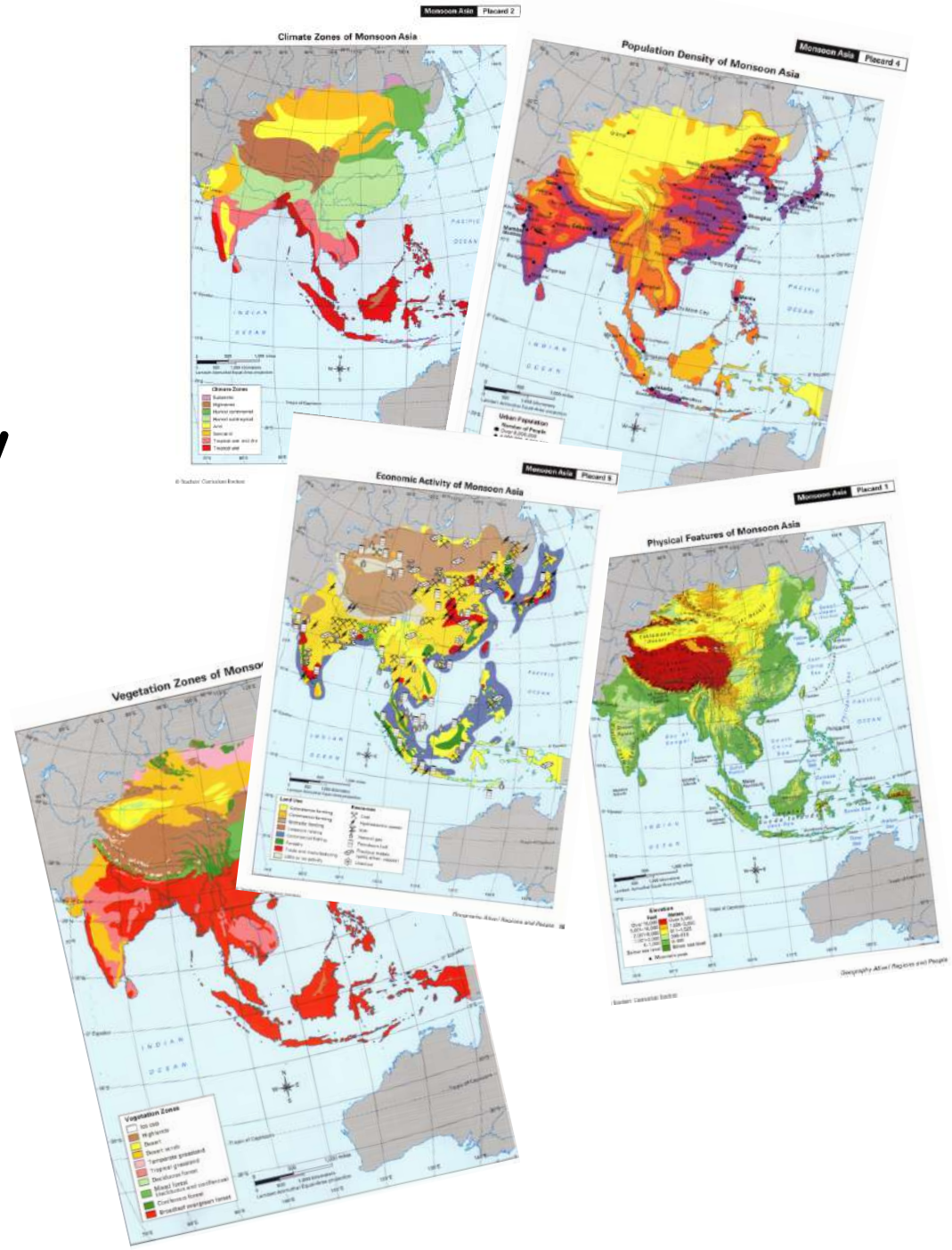
**•Is this information about physical  
geography or human geography?**





Look carefully at each map on your desks. For each map, discuss the three questions below with your partners.

- What are at least five key symbols or colors on the map?
- What key information does this map show?
- Is this information about physical geography or human geography?



	SYMBOLS	INFORMATION	PHYSICAL VS. HUMAN
VEGETATION MAP			
CLIMATE MAP			
PHYSICAL MAP			
POPULATION DENSITY			
ECONOMIC USE			

# MONSOON ASIA CHALLENGES

## Monsoon Asia Challenge 3

Mount Everest is located on the boarder of which two countries?

## Monsoon Asia Challenge 3

Which island country in Monsoon Asia contains two cities with a population of more than 8 million people? What are those cities?

## Monsoon Asia Challenge 3

One of the longest rivers in the world flows from the Plateau of Tibet to the East China Sea. What is the name of this river? Through which country does it flow?



## Monsoon Asia Challenge 4

Where in Monsoon Asia does this person live?  
 “The coastal areas of my country have over 250 people per square mile. Like many people here, I am a subsistence farmer. My cousin works for a manufacturing plant in a city. My country is one of diversity. The elevation ranges from sea level to over 10,000 feet. Parts of my country are dry all year round. Other parts are tropical with wet and dry seasons.”  
 Give details from each map that supports your answer.

## Monsoon Asia Challenge 3

Which four countries in Monsoon Asia have some land in an ice cap vegetation zone?

## Monsoon Asia Challenge 3

Once country in Monsoon Asia has all of these climate zones: highlands, humid subtropical, semiarid, arid, tropical wet and dry, and tropical wet. What is the country?

## Monsoon Asia Challenge 4

Compare the population densities in the western and eastern halves of China. How do physical features and climate help to explain why they are so different?  
 HINT: Describe the population density, elevation, climate, and physical features of both areas in your answer. Then explain which area is the most suitable for large populations.

## Monsoon Asia Challenge 4

For a travel guide of my country, I write:

- Our climate is pleasant – not too dry nor too wet, like some parts of Monsoon Asia.
- Our capital city of over 8 million people offers shopping, museums, and entertainment.
- We have different types of forests to enjoy.

I also include a map of the islands that make up my country. Which country am I writing about? Use information from each map to explain why you think the country is .....

## DIRECTIONS:

Read each challenge (#1-8). With your group decide which thematic maps you will need to answer the question. Use your overlay map of monsoon Asia to help you determine the answers. Once you have all the information you need to answer the question, get your answer sheet. Circle the name of the map(s) you used to find your answer. Write the answer in complete sentences in (pencil only).

**MAPPING CHALLENGE ANSWER DOCUMENT**  
**MONSOON ASIA MAPPING LAB CHALLENGE #3 Using Geography Skills to Answer "Where?"**

QUESTION	Circle the thematic map you used. Then answer the question in complete sentences				
1	Physical Features	Climate Zones	Vegetation Zones	Population Density	Economic Activity
2	Physical Features	Climate Zones	Vegetation Zones	Population Density	Economic Activity
3	Physical Features	Climate Zones	Vegetation Zones	Population Density	Economic Activity
4	Physical Features	Climate Zones	Vegetation Zones	Population Density	Economic Activity
5	Physical Features	Climate Zones	Vegetation Zones	Population Density	Economic Activity

**MONSOON ASIA MAPPING LAB CHALLENGE #4**  
**Using Geography Skills to Answer "Why There?"**

Circle the thematic maps you used. Then answer the question in complete sentences					
6	Physical Features	Climate Zones	Vegetation Zones	Population Density	Economic Activity
7	Physical Features	Climate Zones	Vegetation Zones	Population Density	Economic Activity
8	Physical Features	Climate Zones	Vegetation Zones	Population Density	Economic Activity



**DIRECTIONS:** Two members of your group should record your answers on this sheet and on the note cards provided for you. After time is called the teacher will collect the note cards and grade them as you move on to the next challenge question. If your team's card is returned to you, it is in correct. You must stop working on the next challenge question and return to the one that is incorrect. Correct it and leave it on the edge of the desk with the green card on top of it. Write all answers in complete sentences. See example.

**Question:** What body of water is used for fishing in India?

**Answer:** The Bay of Bengal is used for fishing in India.

# CHALLENGE 5

## ANSWER DOCUMENT

### Using Maps to Analyze a Field Photograph

	LOCATION A (40 N, 85 E)	LOCATION B (4 S, 138 E)	LOCATION C (19 N, 73 E)
Physical Features			
Climate Zones			
Vegetation Zones			
Population Density			
Economic Activity			



#### **DIRECTIONS:**

1. Find the Coordinates for the three locations (Location A, B and C). Carefully mark and label those exact locations on your transparency.
2. Lay your transparency over the thematic maps. Write as much information as possible about the three locations in the corresponding sections of the Challenge 5 table. This chart should rotate and represent a group effort.
3. With your teammates, carefully analyze the information in your notes and details about the field photograph.
4. Support your choice by completing the supporting-evidence statements on the back of your chart. In each statement about the location you chose, connect information from one of the maps to a visual detail from the photography. See example below:

***From the population density map, we learned that this location is very close to a city of over 8 million people. In the field photograph, we see hundreds of people on a crowded city sidewalk.***



## Field Photograph



Sebastian D'Souza/AFP/Getty Images

**Location A**  
40° north, 85° east

**Location B**  
4° south, 138° east

**Location C**  
19° north, 73° east