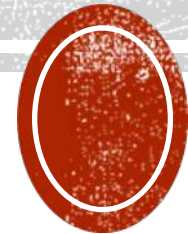


FIRST NINE WEEKS SOCIAL STUDIES



OPENING- DO NOW.

- Please complete the Student Survey that your teacher passes out to you.
- Write neatly and answer each question completely.



INTRODUCTIONS, RULES, PROCEDURES

- **Teacher Intro**
- **Rules/Procedures/Questions**
- **Meet Me At...**



- **Golden Gate Bridge-**
- **White House-**
- **Big Ben-**
- **St. Peter's Cathedral-**
- **Coliseum-**
- **Great Wall of China-**
- **Taj Mahal-**
- **Victoria Falls-**
- **Sydney Opera House-**
- **Amazon Rain Forest-**
- **Machu Picchu-**
- **Pyramids at Giza-**

MEET ME AT...



OPENING- ORGANIZING YOUR CLASS SUPPLIES

- Binder
- Paper
- Dividers

■ Label dividers with these titles:

- 1. Geo Skills
- 2. Europe
- 3. Latin America
- 4. Canada
- 5. Australia
- 6. Governments
- 7. Economics



PRETEST

- Complete the pretest your teacher handed you on the way in the door.
- **USE PENCIL. NO TALKING.**
- Turn in when complete and work on acrostic.



**SOCIAL
STUDIES
ACROSTIC**

You should have a binder for SS with paper and dividers.

You will put this into the first section which is going to be called **Geo Skills.**



OPENING- DO NOW

- Turn in your SS binder to the GeoSkills section.
- Find your Social Studies Acrostic Poem

S
O
C
I
A
L

S
T
U
D
I
E



S Study of history and civilizations

O Observe ancient artifacts

C Collection of information from the past

I Investigate cultures

A Archeological digs

L Laws of the lands

S Study of geography

T Tools, trade, and technology

U Understand civics

D Discover a connection from past to present

I Involves everyone

E Exploration

S Study of history and civilizations

**SOCIAL
STUDIES
ACROSTIC**



VOCABULARY PREVIEW

- Read silently over the list of words.

- Get out the following colored pencils:

red, orange, yellow, green, blue, purple,
black

- Now, follow the directions as I tell you what to do.



OPENING

Turn to the next blank page in your GeoSkills section of your binder.

Get out your pencil and get ready to use your best handwriting



Unit 1 'Basic' Vocabulary

This vocabulary will be on your Unit 1 Test as well as your continents and oceans sheet with questions...

Physical Map

- ▶ A map that shows physical features (mountains, rivers, deserts, etc.)



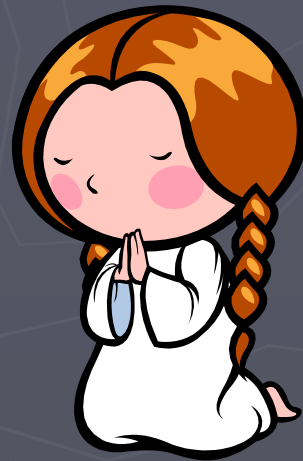
Political Map

- ▶ A map that shows political features (cities, countries, towns, borders, etc.)



Culture

- ▶ the beliefs, traditions, laws, art, food, and ways of living that a group of people share



Standard of Living

- ▶ How wealthy or poor a nation is
 - Either a high standard of living or low standard of living
 - ▶ High = richer
 - ▶ Low = poorer



Literacy Rate

- ▶ The percentage of people (over the age of 15) that can read and write in a country.
 - According to CIA World Factbook online
 - ▶ The World average 83.7%
 - 88.3% male
 - 79.2% female
 - ▶ USA = 99%
 - ▶ Haiti = 52.9%



Natural Resources

▶ Any valuable product that comes from nature

▶ Examples:

- Oil, coal, natural gas
- Vegetables and fruits
- Cotton
- Sheep and cows
- Gold and silver



Opening:

▶ Turn to the next blank page in your GeoSkills section. On a blank piece of paper, list the:

- 7 continents
- 4 oceans

NO CHEATING!!!!!!!!!!!!!!!!!!!! 😊

Check yourself!

North America

South America

Africa

Europe

Asia

Antarctica

Australia

Atlantic

Pacific

Indian

Arctic

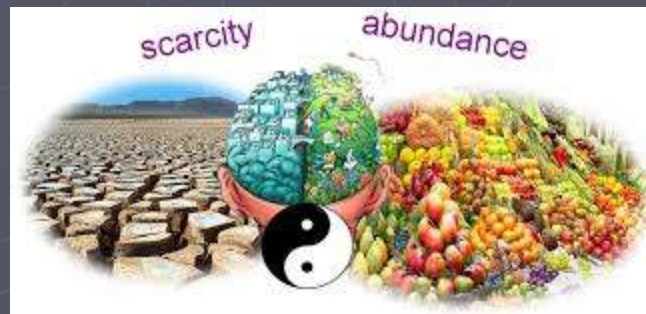
Agriculture

- ▶ Farming
- ▶ the science and business of cultivating soil, producing crops, and raising livestock



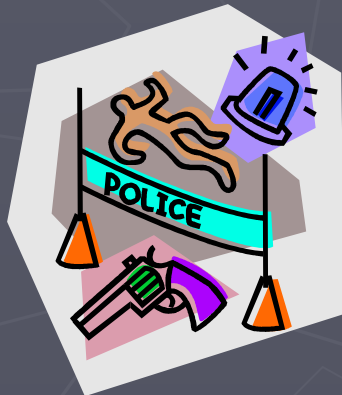
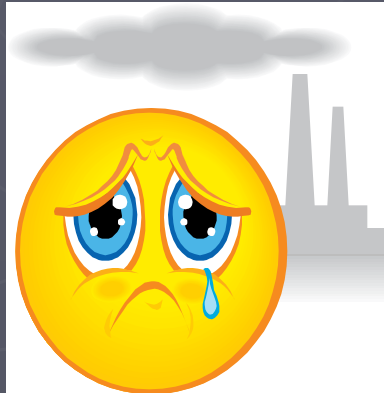
Scarcity

- ▶ a shortage of resources. A problem that happens when people want a lot of something, but there isn't enough.
- ▶ **Example:** Oil is a nonrenewable resource. More and more people use oil every day, for many different things. One day, there will no longer be enough oil for everyone on the planet



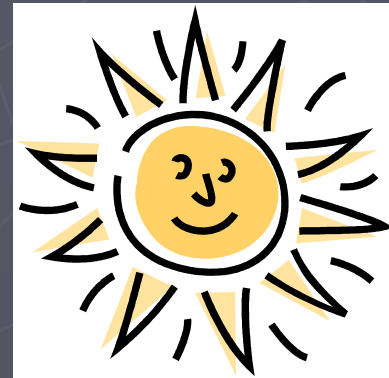
Push Factor

- ▶ anything that causes people to move away from a place



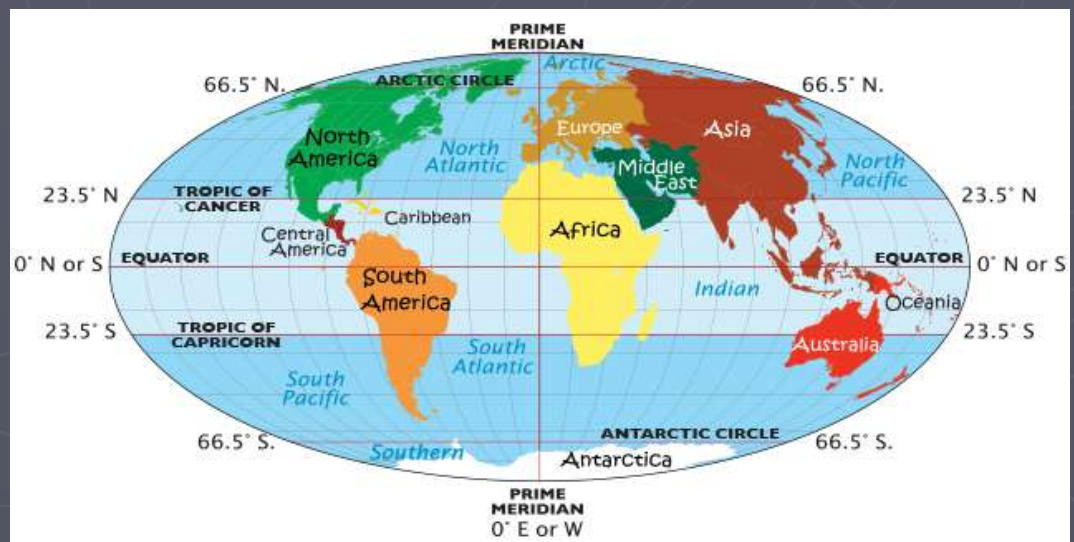
Pull Factor

- ▶ anything that causes people to move to a place



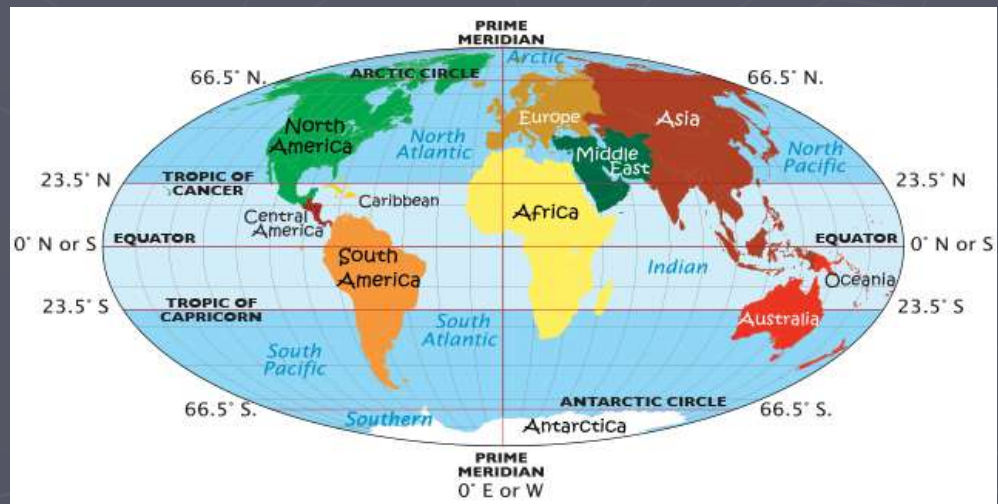
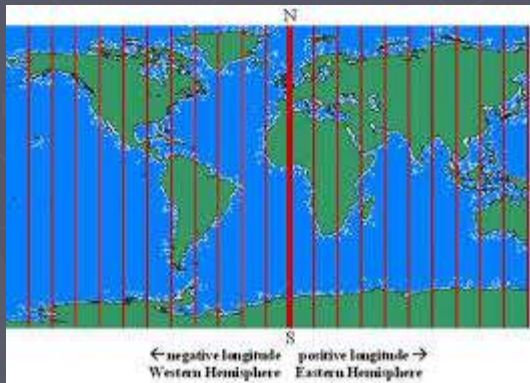
Equator

- ▶ **latitude line**-divides Earth into North and South hemispheres



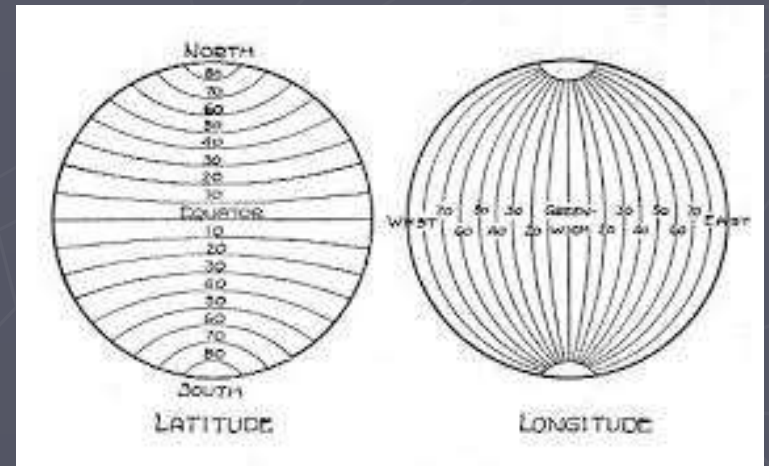
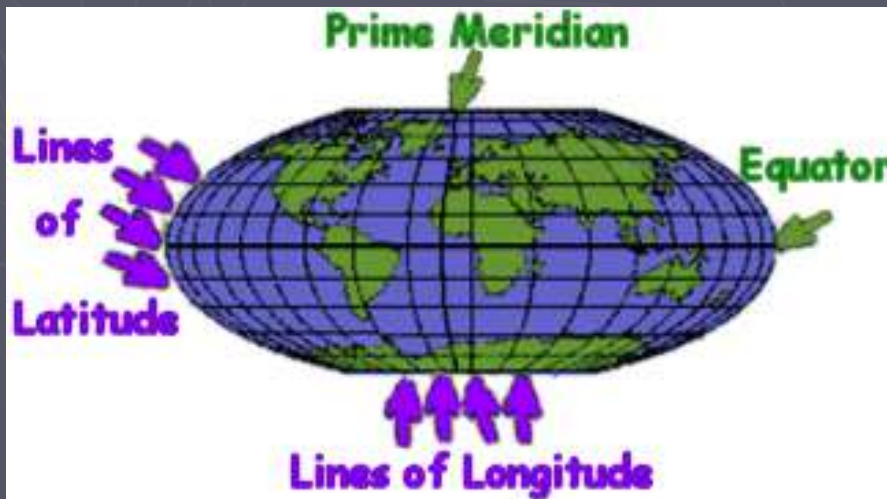
Prime Meridian

- ▶ longitude line-divides Earth into East and West hemispheres



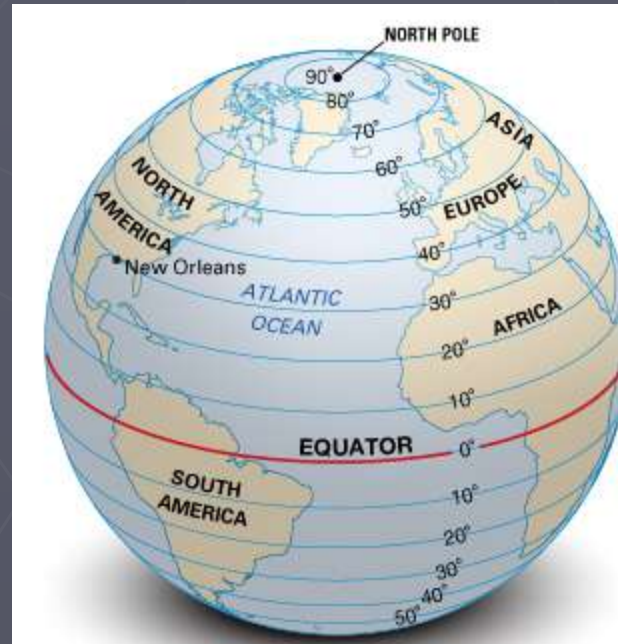
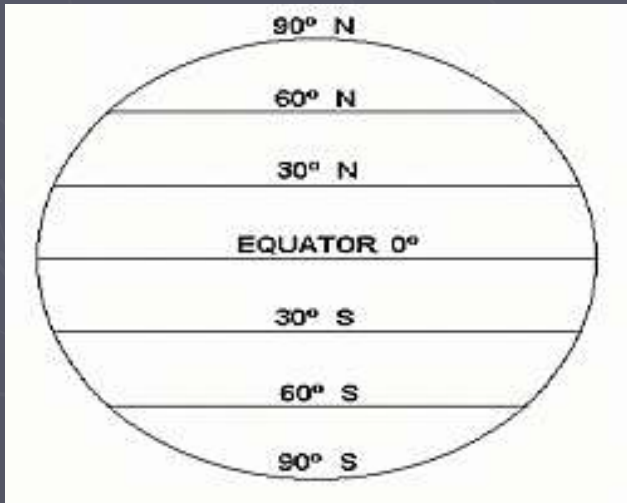
Latitude and Longitude Lines

- ▶ Latitude and longitude are the two grid coordinates by which you can locate any point on Earth



Latitude Lines

run East to West; measure how far a place is from Equator

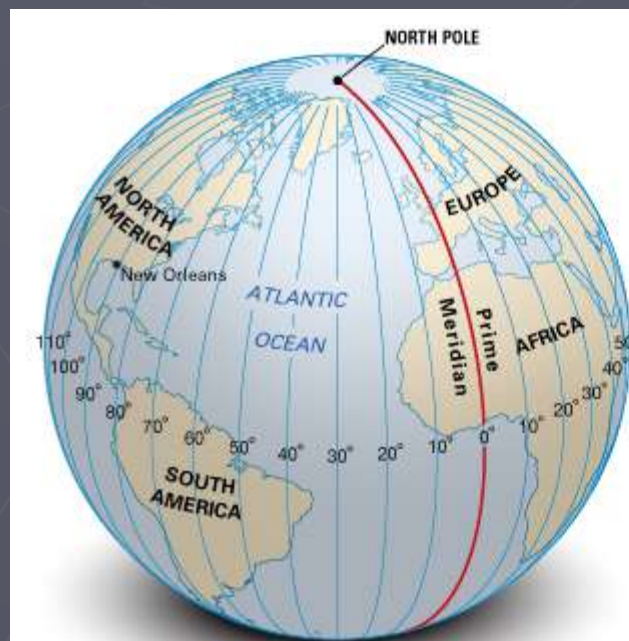
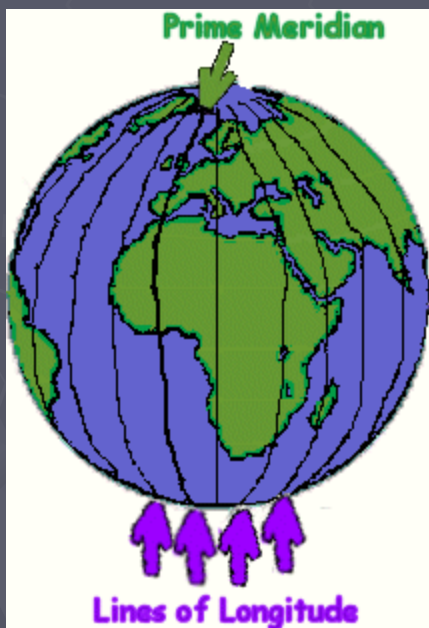


FACTS ABOUT LINES OF LATITUDE

- Are known as parallels.
- Run in an east-west direction.
- Measure distance north or south from the Equator.
- Are parallel to one another and never meet.
- Cross the prime meridian at right angles.
- Lie in planes that cross the Earth's axis at right angles.
- Get shorter toward the poles, with only the Equator, the longest, a great circle.

Longitude Lines

- ▶ run North to South; they measure how far a place is from Prime Meridian



FACTS ABOUT LINES OF LONGITUDE

- Are known as meridians.
- Run in a north-south direction.
- Measure distance east or west of the prime meridian.
- Are farthest apart at the Equator and meet at the poles.
- Cross the Equator at right angles.
- Lie in planes that pass through the Earth's axis.
- Are equal in length.
- Are halves of great circles.

Exit Slip

- ▶ Put your name and class period on the paper.
- ▶ 1. How well do you know the continents and oceans?
- ▶ 2. How do you study?

Movement and Migration

- ▶ When a group of people or animals moves from one area to another



Urban Areas

▶ Heavily populated cities



- Examples: Atlanta, NYC, Tokyo, Los Angeles

▶ High Population Density (lots of people in a smaller area)

- Tall buildings
- Factories
- LOTS of jobs!
- Usually lots of pollution
- Usually easy to walk to work or shops



Industrial Areas/Industry



- ▶ Cities/Urban areas with factories
- ▶ An area where lots of things are produced
- ▶ POLLUTION 
- ▶ High-population density because of JOBS



- ▶ **Industry**-producing goods or services



- ▶ Industrial revolution: Years of 1760-1840



Suburban Areas



▶ **Smaller towns & cities: 'suburbs'**

- Examples: Paulding County, Marietta, Acworth

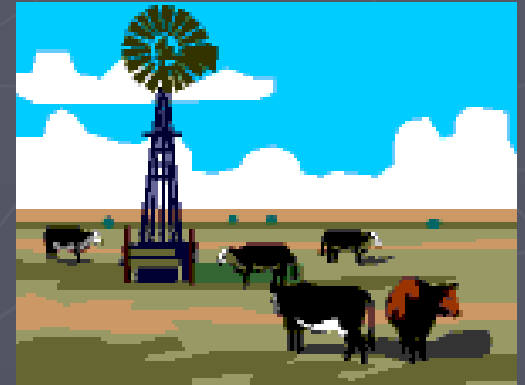
▶ **Medium Population Density**

- Neighborhoods
- *Suburban Sprawl*
- Usually have to drive to get around
- Many people living in 'suburbs' may commute to the urban areas for jobs
 - ▶ Example: Your parents working in ATL and driving there each day. **TRAFFIC!!**



Rural Areas

- ▶ Located furthest away from cities & towns
- ▶ Low population density
- ▶ Farmland, large forested areas, & wide open spaces.

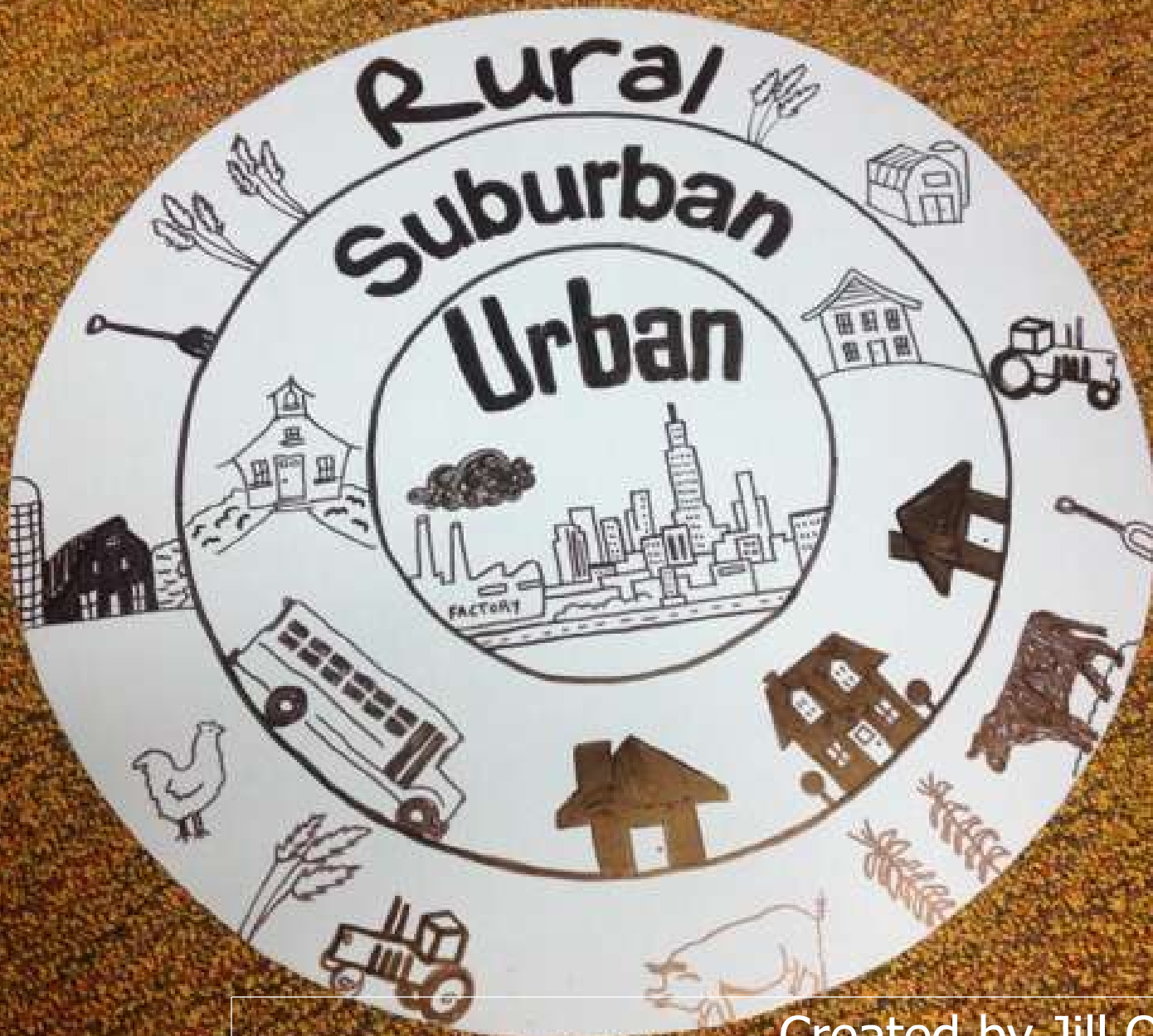


Opening

- ▶ ON the next blank page in your GeoSkills section, draw how a picture for these words would look:

Rural, suburban, and urban.

GO! 😊



Created by Jill Oberkofler

Citizen

- ▶ A legal member of a country



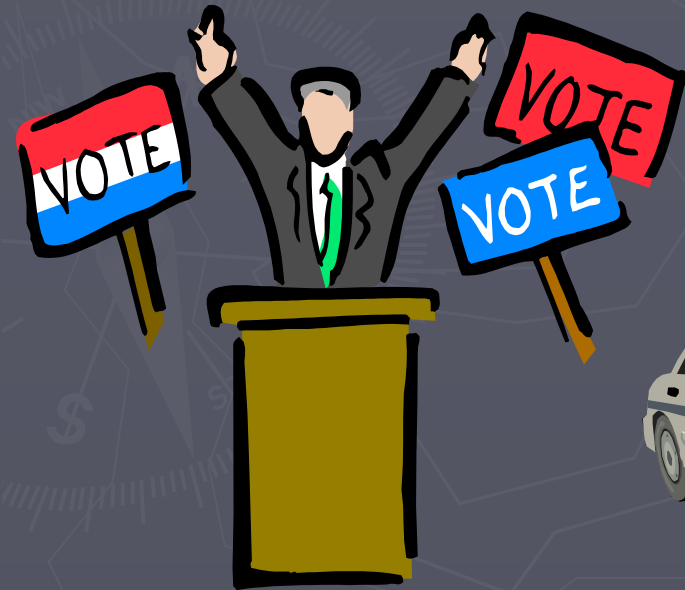
Geography

- ▶ the study of people, places, and the environment



Government

- ▶ the people or groups in a country that makes laws, makes sure those laws are enforced, and settles disagreements about those laws



Economics

- ▶ the production, consumption, and distribution of goods and services
 - Production means producing or making something.
 - Consumption means consuming or using/eating something.
 - Distribution means distributing or selling something.

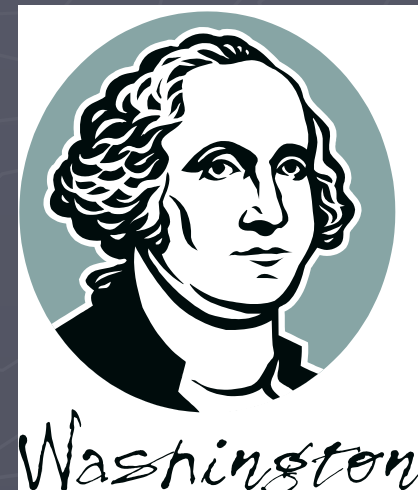


Production, Distribution, Consumption



History

▶ a record of the past

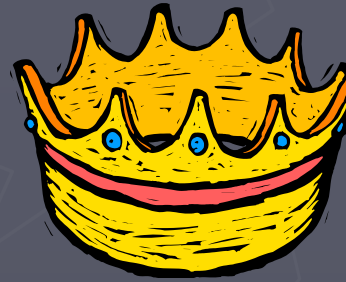


Empire

- ▶ A nation or group of nations ruled by an emperor or king



Caesar



Brain Break!

Continents and Oceans Practice

- ▶ http://www.sheppardsoftware.com/world_G1_drag_drop.html

Jeopardy Review

- ▶ <http://www.superteachertools.us/jeopardyx/jeopardy-review-game.php?gamefile=1452663#.VddQW6PD-1t>