

You have learned about cultures and the ways cultures shape the places where people live. You have learned about cultural diffusion and how it contributes to change in places over time. Now it is time to demonstrate your understanding of places and how they are changed and shaped by cultures. You are ready to provide geographic advice to the movie production team of Bollywood Productions.

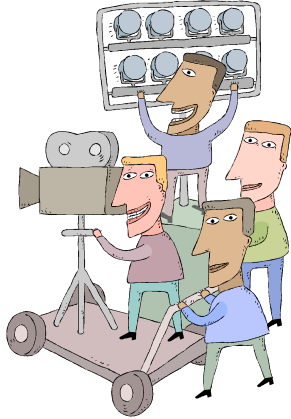
Have you heard of Bollywood? This nickname is applied to a group of movie studios near the city of Mumbai in India. Each year this area produces many films in the Hindi language. Production schedules are tight, and budgets are low. Because of this, most movies are produced on the movie lot, not shot on location. Crews are busy creating sets, finding props, preparing costumes and writing scripts. Welcome to the Busy, creative world of Bollywood!

New Bollywood Movie: *This Place Will Never Be the Same Again*

Plot summary: A traditional Asian town is prosperous and proud of its traditional way of life. Nothing has changed here in a very long time! Then a group of new residents arrives in town with new ways of thinking and doing- and the place will never be the same again!

The Bollywood Productions Company wants to turn out movies that are fun, but they want them to be as accurate as possible. As the geographer on the set, you will be asked to give them advice on set design, costumes, selection of props, and even the development of the plot. This film is about cultural groups and how they shape places. To be useful to the company, your answers must be complete and consistent with what you have learned about cultures in Asia, and about cultural diffusion. Good luck with your Bollywood Movie!





Segment One: Set the Stage

Follow the directions to describe the **site** for the first scene of the movie

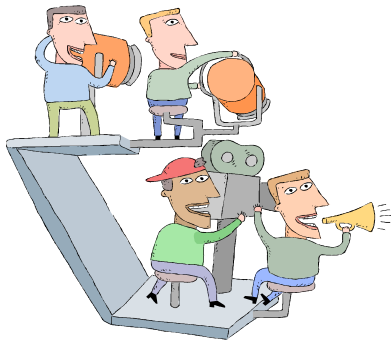
The Bollywood Productions crew needs your help to prepare for the first segment of the movie. To build the set with backdrop scenery and buildings they need a description of the landscape. To hire actors and have the costumes ready, they need to know about the people of the area. They have three possible locations in mind for the first scene. **Select one of the following Asian locations.** Then complete the chart below to guide the set production crew. You will need an atlas or other reference to complete this task.

Circle the location you choose for scene one:

- **Hanoi, Vietnam**
- **Tokyo, Japan**
- **Mumbai (sometimes called Bombay), India**

Asia map with locations shown

Elements to include:	Detailed description:
Landforms/ water forms to include in the scenery	Written description (You may include a labeled sketch)
Climate of the area: (What kind of weather would be expected in this area at each time of year?)	
Vegetation and Animals:	
Population: (How many people? What ethnic groups? What occupations?)	
Language and writing system for signs	
Cultural Characteristics of Buildings	
Typical Clothing	



Segment Two:
 Choose Props and Costumes for the
 New People in Town

In this scene, a group of people has decided that they must migrate to location 1, and they are beginning to pack. They know it may be a long time till they can return to their homeland, if ever, so they want to take some things with them to help them remember their culture. Bollywood Productions has a crew preparing props and costumes for segment two of the movie.

First, select one of these locations for segment 2. Circle your choice.

- **Riyahd, Saudi Arabia**
- **Jakarta, Indonesia**
- **Seoul, South Korea**

Prop Chosen	What this prop will tell viewers about the culture

Costume choices: From the catalogue of costume choices, select the wardrobe that will best match the cultural area you selected for segment 2. My Choice _____.



WARDROBE 1



WARDROBE 2



WARDROBE 3



WARDROBE 4





Segment Three: Cultures Interact

Script writers at Bollywood Productions need your help. They are preparing to write the script for segment three. In this segment, the people in segment two move to the place in segment 1. They bring with them all the props you selected in segment two. They are wearing the clothing wardrobe you selected. Before the writers can write the dialogue, they need your advice on what will happen in this final segment of the movie. Your job is to outline the plot for them, telling **what will happen to the place** because the new people came. You may add scenes as needed.

Plot development "twist":- Briefly tell what happens	Who is involved?	Changes to set, props, or costumes?
Train arrives at station, new people get off train. Original residents look surprised at appearance of new people, sound of their language, etc.	New people- men, women, and children Original residents, mostly men working at train station	Luggage is unloaded from train;
Next scene:		
Next scene:		
Final scene:		



Rubric

Segment One Set

Task 1: Student completes a chart for set description using reference maps and materials provided and information learned in the unit. For each correct and complete response, the student can earn up to 5 points. Partial credit can be earned. **A total of 35 score points are possible.**

Segment Two: Props and Costumes

Task 2: The student selects a location for the film, and then suggests 5 props consistent with that choice to support the sense of the culture. Props may include tools, toys, inventions, writing examples, transportation items, eating utensils- almost any object. To receive credit, the student must provide a valid explanation for the choice of this prop. A total of **25 points is possible.**

Task 3: the student selects a location for the second cultural group and then selects a set of traditional clothing consistent with the choice of cultural group. **Total points possible 10.**

Segment Three: Cultures Interact

Task 4: The student outlines a series of events that is plausible and consistent with cultural diffusion. The student answer clearly indicates how the first place is likely to be changed by the presence of a second cultural group. Additional scenes and plot twists will remain consistent with geographic learning. **Total points possible for this segment 30.**

Task 1 Points Possible	
35	
Task 2 Points Possible	
25	
Task 3 Points Possible	
10	
Task 4 Points Possible	
30	
TOTAL Points Possible	
100	