

STUDY GUIDE UNIT 6 Lesson 1 and 3

1) What is the Cell Theory?

All living organisms are composed of one or more cells. 2) The cell is the basic unit of structure and organization in organisms. 3) Cells arise from pre-existing cells.

2) What is the basic unit of all life? **CELL**

3. True or False

- a. animal cell has a cell wall? **FALSE**
- b. Plant cell has a cell wall? **TRUE**
- c. Animal Cell has chloroplast? **FALSE**

4) What is the function of the central vacuole in a plant cell? **Water storage and support**

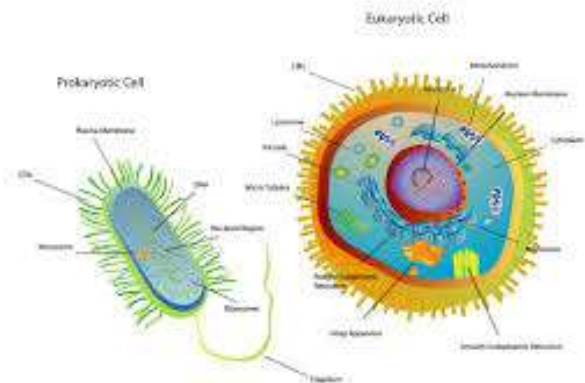
5) What are 2 structures that surround cells? **They are at the outermost part of the cells. Cell wall and cell membrane.**

6) Draw a cell wall and label what type of cell it is. **Draw rectangular cell stating it is a plant cell.**

7) What is the function of a cytoskeleton? **A web of proteins that gives shape and support to the cell**

8) What is an organism? **A living thing**

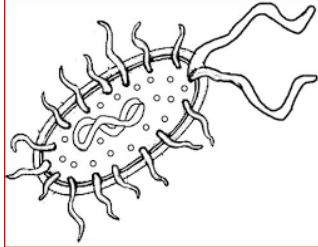
9) What are some ways you could identify the cell on the right as a eukaryotic cell? **A nucleus, its larger, it has more organelles.**



10) How do cells form? **Cells divide to make more cells.**

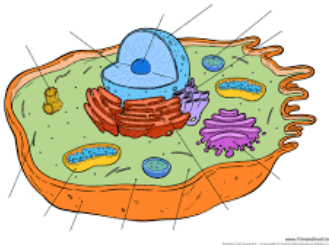
11) The cells nucleus holds DNA .

12) What type of organism is shown below? **Prokaryote**



13) Where is the DNA in a prokaryote located? **Floating in the cytoplasm.**

14) Label the nucleus. **Center oval shaped area.**



15) Where is the DNA in a eukaryote located? **The nucleus**

16) What is the function of the cell membrane? **It holds the cell together and controls what goes in and out of the cell.**

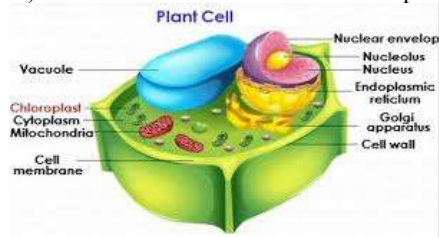
17) What term describes the smallest unit that can perform all of the functions necessary for life? **CELL**

18) True or False?

- A) A prokaryote is an organism? **TRUE**
- B) A eukaryote is an organism? **TRUE**

19) What is the function of the lysosomes?

20) What evidence is shown that this is a plant cell? I am looking for 3 things.



CELL WALL/CHLOROPLAST/LARGE VACUOLE

