

---

**SSUSH13 The student will identify major efforts to reform American society and politics in the Progressive Era.**



# The Progressive Era

---

- The Age of American Domestic Reform
- Can you name the Presidents pictured above?

# Constitutional Reforms



- Income tax: 16<sup>th</sup> amendment
- Direct Election of senators: 17<sup>th</sup> Amendment
- Prohibition: 18<sup>th</sup> Amendment (1920)
- Women's suffrage:
  - 19<sup>th</sup> Amendment (1920)



# What was the Progressive Era?

---

- The P. era was the period of time during the late 1800's & early 1900's when the federal government began to regulate business, labor, etc. to improve the lives of Americans.
  - Designed to protect the people from the wealth and power of big business and its abuses.
  - Historians date the P. era from 1890-1917.

# Progressives

---

- Progressives sought change in all policies at all levels of government
  - Initially their efforts were successful at the local level.
  - Gradually their reforms progressed to state and national levels.

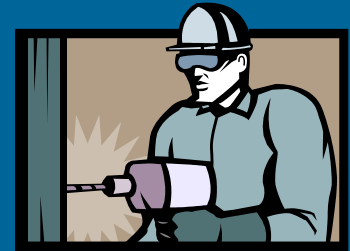
# Who were the Progressives?

---

- The reformers were predominantly members of the middle class.
- Women came to the fore in the Progressive era
  - Many proved their value as social workers.
- The Progressives pushed for social justice and general equality

# Progressive Goals

---



- Some politicians, such as Theodore Roosevelt, and many civilians pushed for better working conditions for the average worker, better living conditions for the poor, the cleaning up of corruption in politics, & environmental conservation.
- 1<sup>st</sup> time Americans see the gov't getting involved

# The Four Original Goals of Progressivism

---

- Protecting social welfare - YMCA
- Promoting moral improvement - prohibition of alcohol
- Creating economic reform - change of individual behavior and busting of trusts
- Fostering efficiency - "Taylorism"
  - Frederick Taylor wrote "The Principles of Scientific Management" in 1911



# Tactics of the Progressive Era

---

- Recall
- Referendum
- Initiative
- Define the above in your notes.

# Jane Addams



- Hull House “Settlement House” in Chicago, IL
- Community Center to help immigrants “settle” into American life
- 1<sup>st</sup> public playground
- Library, education etc.
- Geared toward helping the urban poor
- Nobel Peace Prize: 2<sup>nd</sup> woman to receive the award

# The Power of the Pen

---



- A **muckraker** is a journalist, author, or filmmaker who investigates and exposes societal issues such as political corruption, corporate crime, child labor, conditions in slums and prisons, unsanitary conditions in food processing plants, fraudulent claims by manufacturers of patent medicines and similar topics.

# Muckrakers

---

- In the early 1900s, muckrakers shed light on such issues by writing books and articles for popular magazines and newspapers.

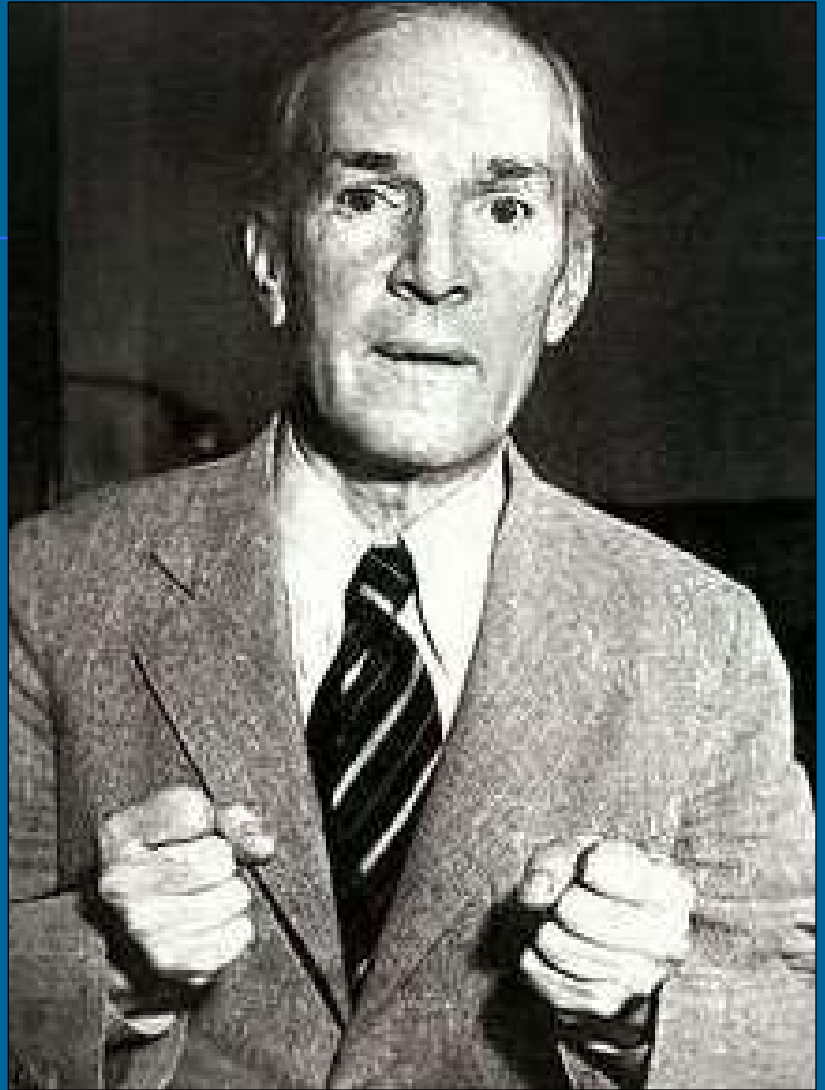


## Muckrakers to Know

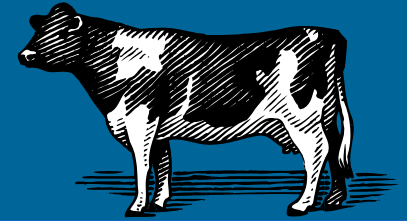
---

- Upton Sinclair
- *The Jungle*, (1906)
- Led to reforms in meat packing in the United States.

“They use  
everything about  
the hog except  
the squeal.”



# Meat Inspection Act, 1906



- Companion to the Pure Food & Drug Act.
- Brought the following reforms to the processing of cattle, sheep, horses, swine and goats destined for human consumption:
  - All animals were required to pass an inspection by the U.S. Drug Administration prior to slaughter
  - All carcasses were subject to a post-mortem inspection
  - Cleanliness standards were established for slaughterhouses and processing plants.

# Future Implications

---

- Contents of food and drug packages must now be listed on the label
- All additives/chemicals must be listed on the labels, as well.
- Cosmetics are not covered.
- Meat inspections regulate and grade the meat that is sold
- Fish is still not regulated



# Making the Connection

---

- Can you think of any food orientated illnesses that are monitored today by the Food and Drug Administration?
- What type of warning labels are currently found on meat products?
- What type of warnings are seen on meat items offered at restaurants?

# Muckrakers to Know



- Ida Tarbell
- History of the Standard Oil Company
- Spotlights Rockefeller's practices
- Reinvented investigative reporting by developing investigative reporting tactics, digging into public documents across the country.
- A female investigative journalist brought down the world's greatest tycoon and broke up the Standard Oil monopoly

10 CENTS  
A COPY Stage Memories BY Clara Morris \$1.00  
A YEAR

# MCCLURE'S MAGAZINE

FOR JANUARY 1901



PUBLISHED MONTHLY BY THE S. S. MCCLURE CO., 141-155 E. 25TH STREET, NEW YORK CITY  
10 Norfolk St., Strand, London, W.C., Eng. Copyright, 1900, by The S. S. McClure Co. Entered at N.Y. Post-Office as Second-Class Mail Matter

## Muckrakers

- McClure's Magazine (cover, Jan, 1901) published many early muckraker articles including Ida Turbell's on Rockefeller.

# Sherman Anti-Trust Act: 1890

---

- Designed to limit the power of trusts & based on the Congressional ability to regulate interstate commerce
- Can you name the President who signed this act?
- Finally put into use in 1904

# Sherman Anti-Trust Act



- As a result of President Theodore Roosevelt's "trust-busting" campaigns, the Sherman Act began to be invoked with some success.
- In 1904 : dissolution of the Northern Securities Company.
- Act was employed by President Taft in 1911 against the Standard Oil trust and the American Tobacco Company.

# Future Implications

---

- AT&T breakup of 1980's
- Price fixing by several corporations of the 1960's & 1970's regulated and their monopolies destroyed.
- Atlanta Gas Light

# Making the Connection

---

- Can you name a company today that is considered to have a monopoly?
- How is this (or any) company monitored to ensure that it does not have a monopoly status?



A historical colorized illustration of the Manhattan skyline from the early 20th century. The image shows the Manhattan Bridge on the left, spanning the Hudson River. The city is densely packed with buildings, and a large ship is visible on the river. The text "Shirtwaist Workers Strike 1909 - 1910" is overlaid in the center in a stylized, outlined font.

# Shirtwaist Workers Strike 1909 - 1910



**Rosa  
Schneiderman,  
Garment Worker**





Child Labor

# Average Shirtwaist Worker's Week

51 hours or less	4,554	5%
52-57 hours	65,033	79%
58-63 hours	12,211	15%
Over 63 hours	562	1%

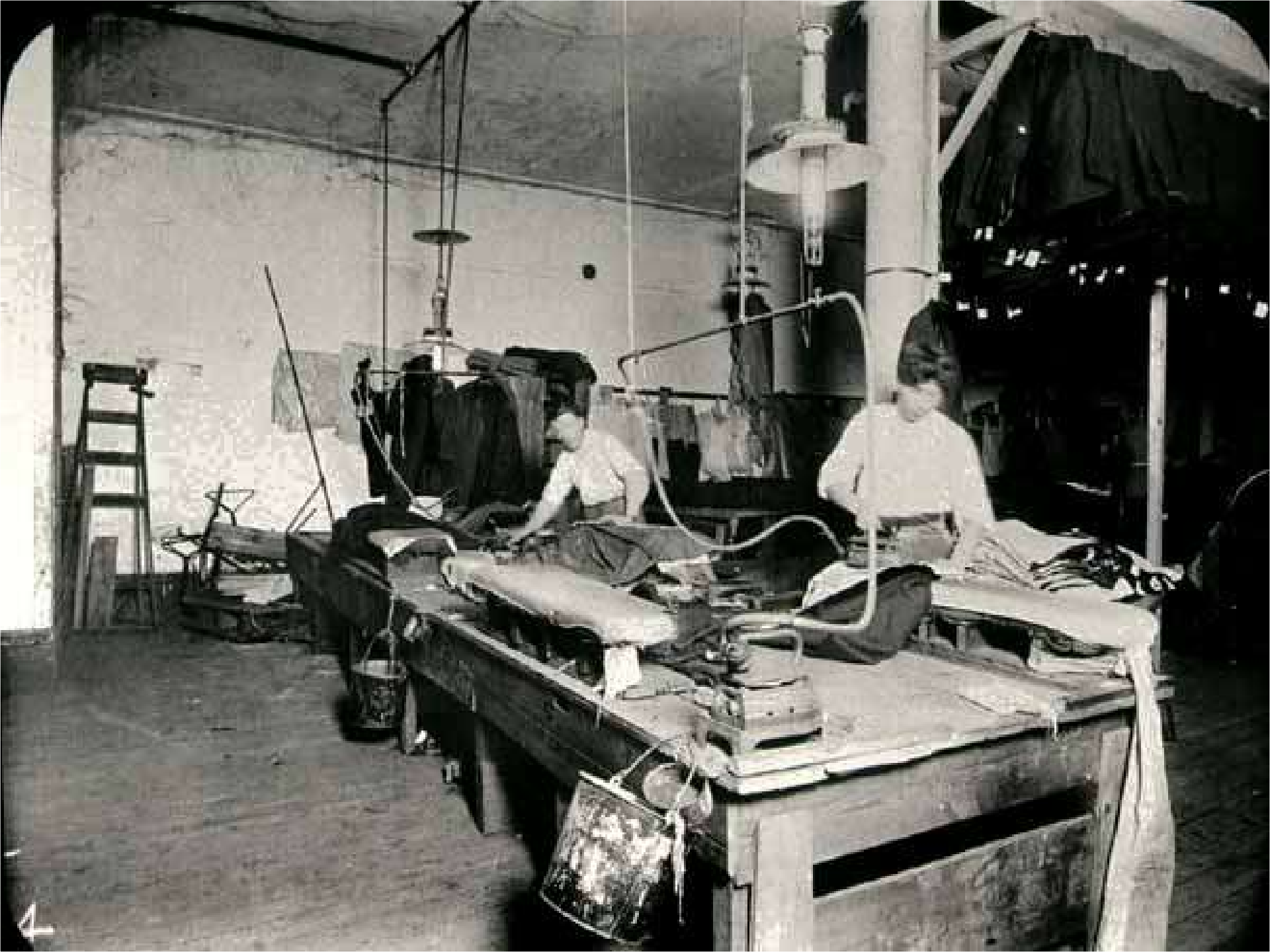
Total employees, men and women  
82,360

# Typical NYC Sweatshop, 1910















# Women's' Trade Union League





**Women Voting for a Strike!**

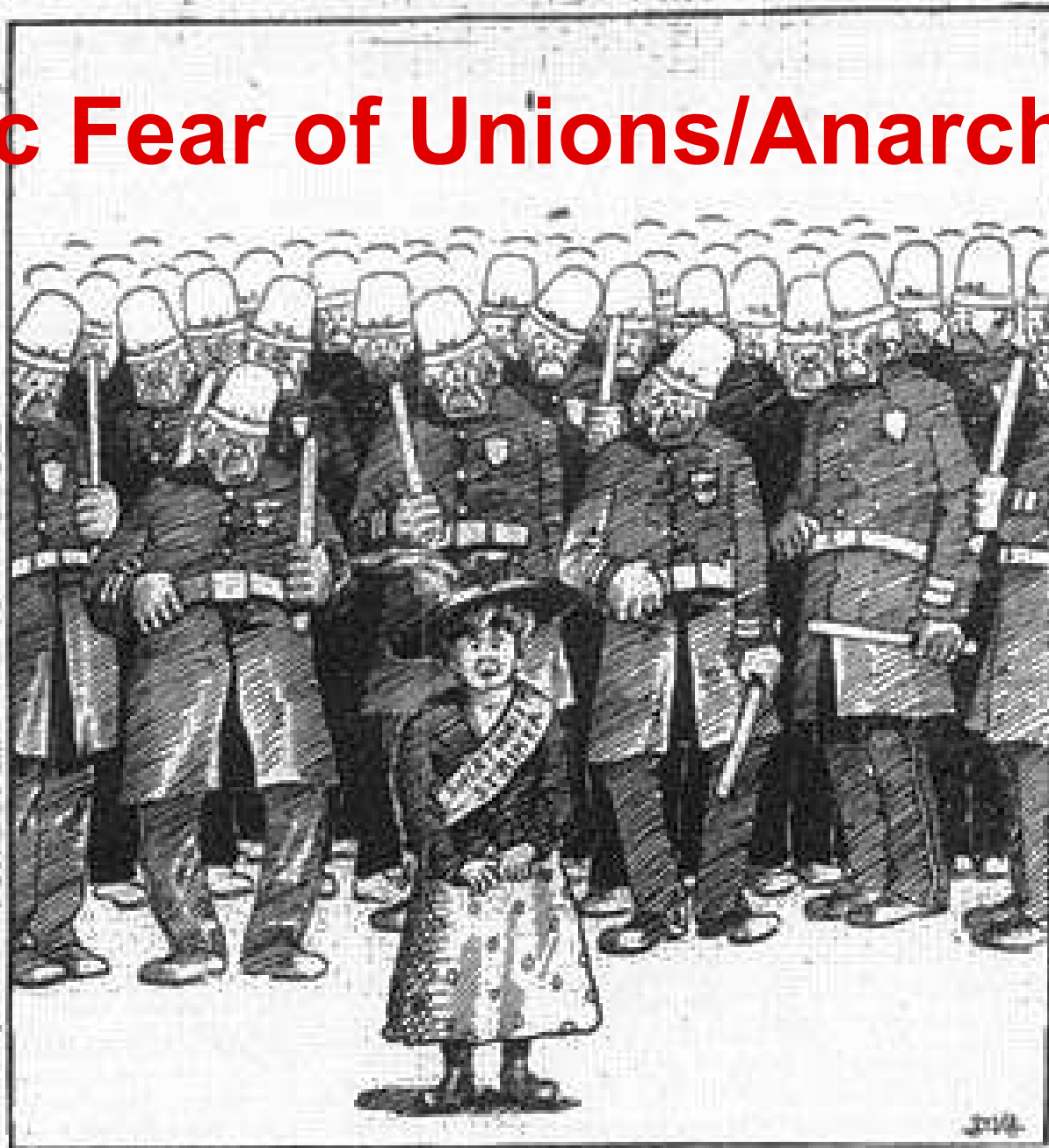
# The Uprising of the Twenty Thousands

- (Dedicated to the Waistmakers of 1909)
- In the black of the winter of nineteen nine,  
When we froze and bled on the picket line,  
We showed the world that women could fight  
And we rose and won with women's might.
- *Chorus:*  
Hail the waistmakers of nineteen nine,  
Making their stand on the picket line,  
Breaking the power of those who reign,  
Pointing the way, smashing the chain.
- And we gave new courage to the men  
Who carried on in nineteen ten  
And shoulder to shoulder we'll win through,  
Led by the I.L.G.W.U.



Local 25 with Socialist Paper, *The Call*

# Public Fear of Unions/Anarchists



How the Police Are Protecting the Public From the Terrible Shirtwaist Strikers.

# Arresting the Girl Strikers for Picketing





**Scabs Hired**



# The Triangle Shirtwaist Factory Fire, March 25, 1911





“The  
Shirtwaist  
Kings”  
Max Blanck  
and Isaac  
Harris



# Triangle Shirtwaist Factory Asch Building, 8<sup>th</sup> and 10<sup>th</sup> Floors

## Eyewitness to History

- Word had spread through the East Side, by some magic of terror, that the plant of the Triangle Waist Company was on fire and that several hundred workers were trapped. Horrified and helpless, the crowds — I among them — looked up at the burning building, saw girl after girl appear at the reddened windows, pause for a terrified moment, and then leap to the pavement below, to land as mangled, bloody pulp. This went on for what seemed a ghastly eternity. Occasionally a girl who had hesitated too long was licked by pursuing flames and, screaming with clothing and hair ablaze, plunged like a living torch to the street. Life nets held by the firemen were torn by the impact of the falling bodies. The emotions of the crowd were indescribable. Women were hysterical, scores fainted; men wept as, in paroxysms of frenzy, they hurled themselves against the police lines.”
- Louis Waldman



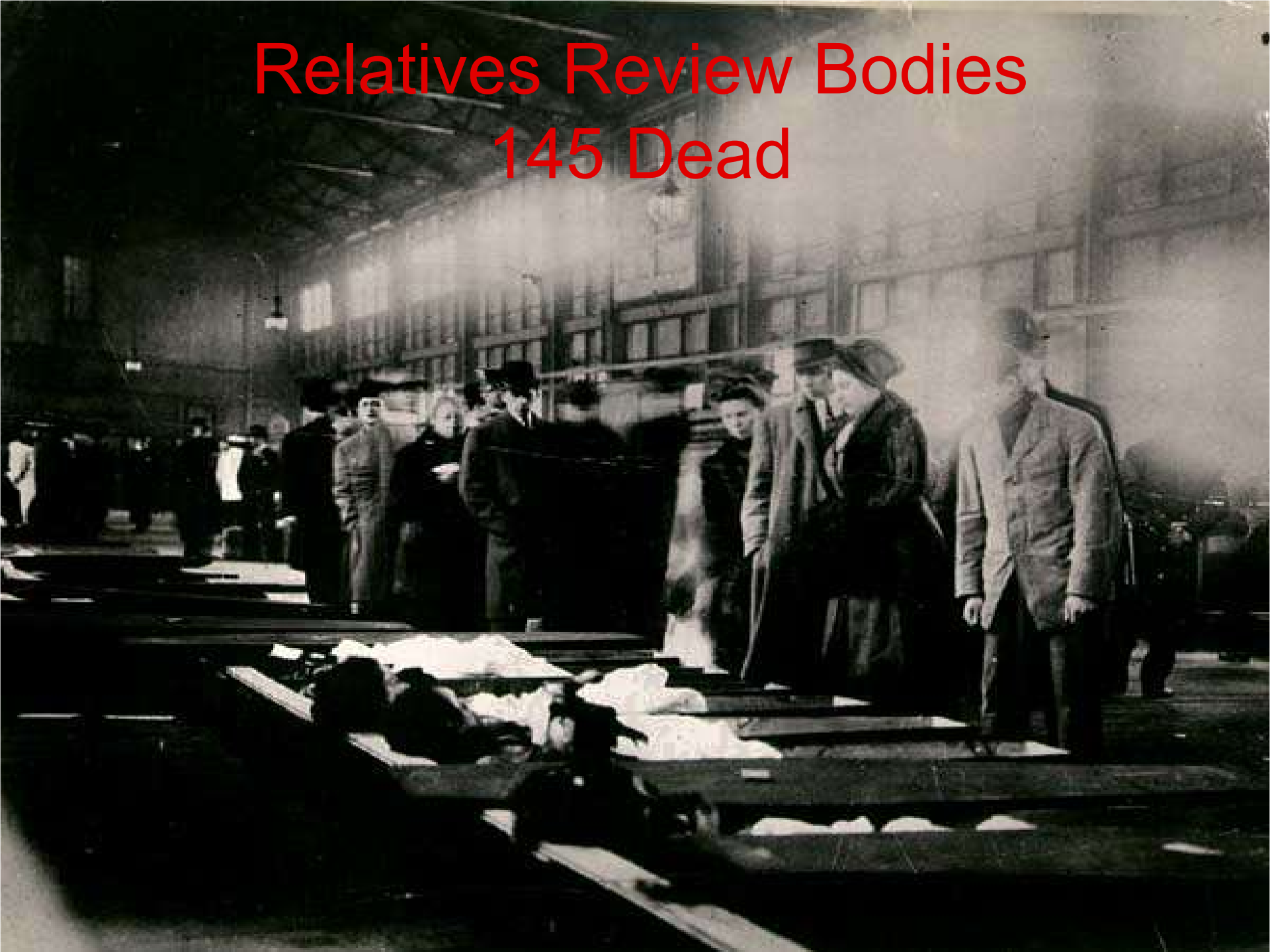
Dead Bodies on the Sidewalk



Scene at  
the Morgue

# Relatives Review Bodies

## 145 Dead





Most Doors  
Were  
Locked

---



24. Sarah Cammestine  
Swore doors were all locked



## ■ Contemporary Cartoon

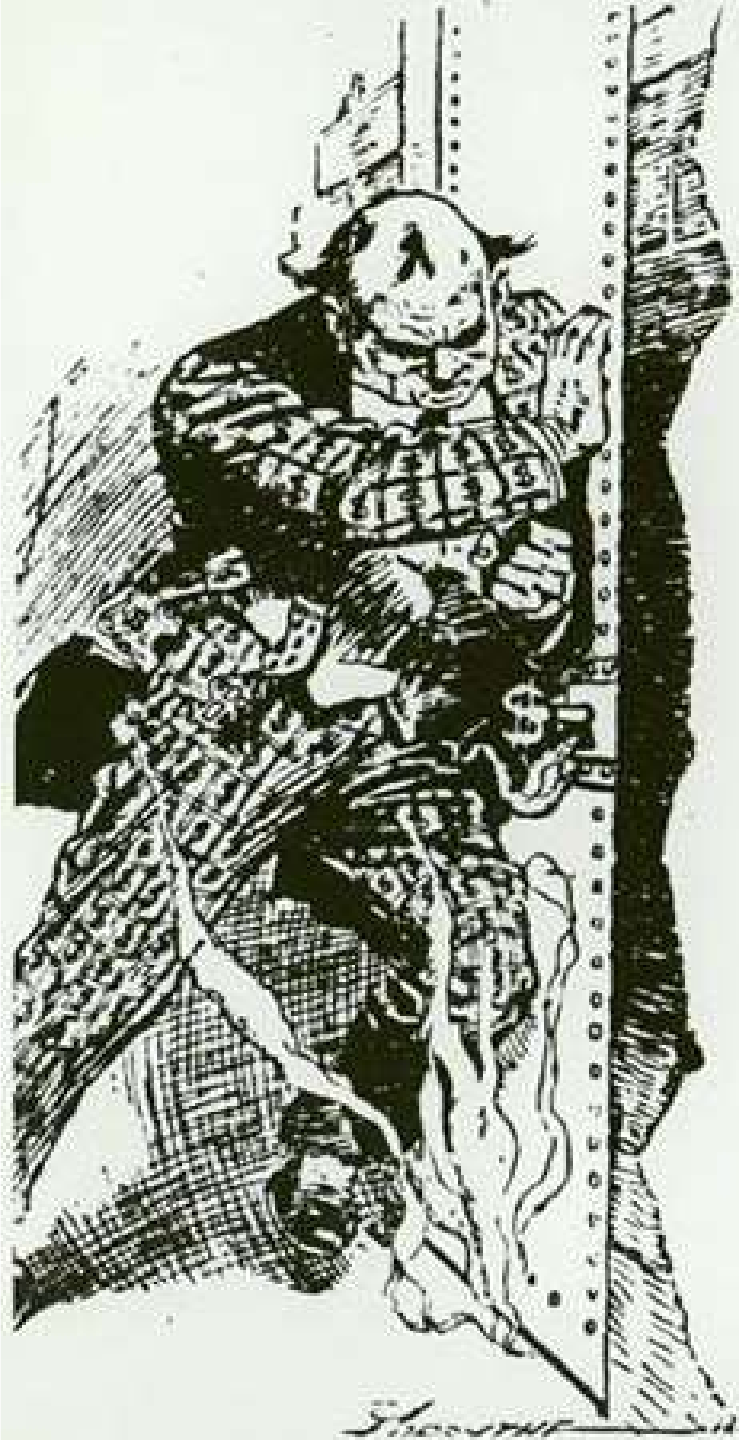


# 10<sup>th</sup> Floor After the Fire



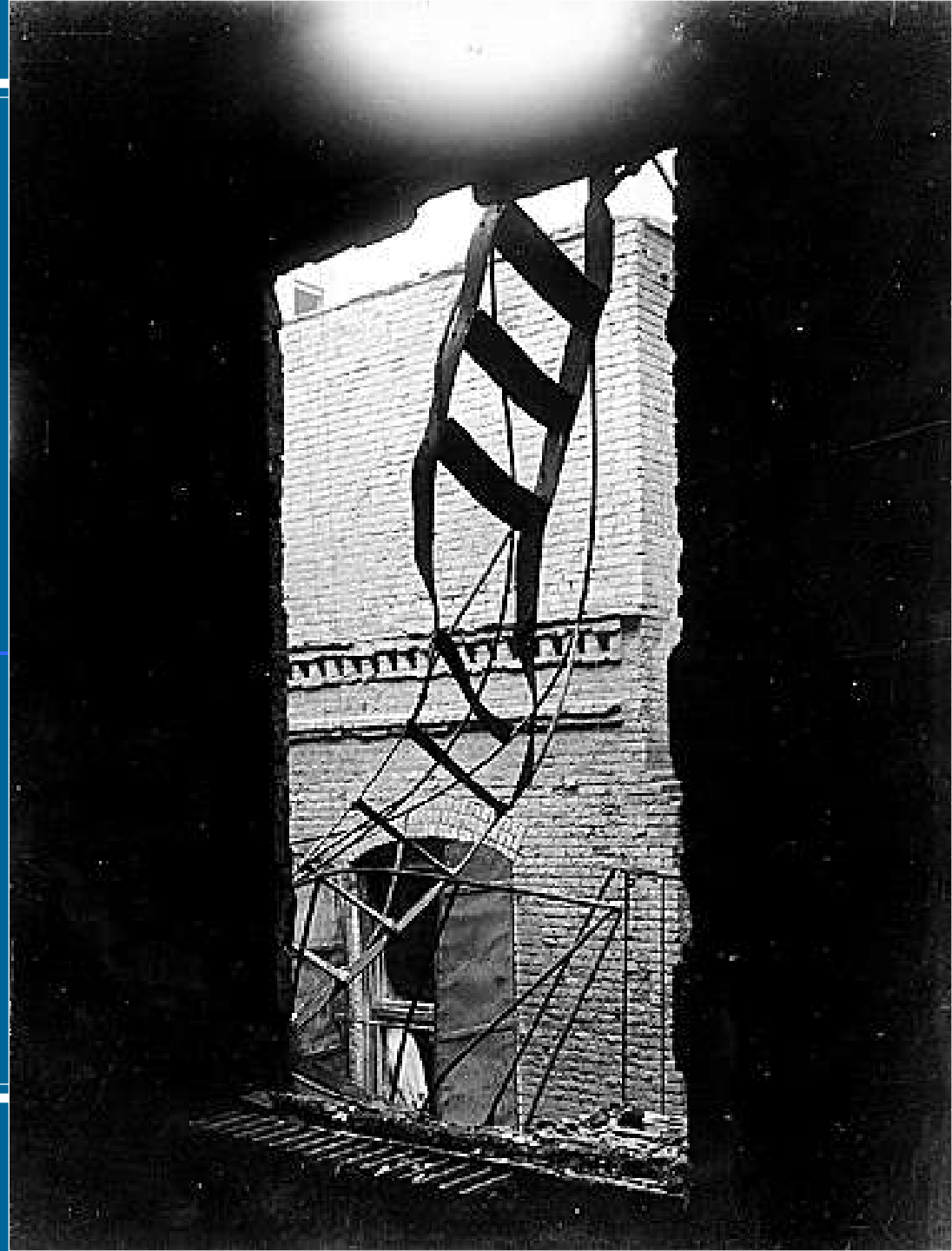
# Inside the Building After the Fire





# Crumpled Fire Escape, 26 Died

---



One of the "Lucky" Ones?



18. One girl who escaped, lost two sisters in fire

Rose Schneiderman

The Last  
Survivor



# Protestors March to City Hall



# Labor Unions March as Mourners







Women Workers March  
to City Hall

# Out of the Ashes

- ▶ ILGWU membership surged.
- ▶ NYC created a Bureau of Fire Prevention.
- ▶ New strict building codes were passed.
- ▶ Tougher fire inspection of sweatshops.
- ▶ Growing momentum of support for women's suffrage.