

Emergency Evacuation Plan **Smyrna High School Stadium**

Potential emergencies at Smyrna High School Stadium (fires, explosions, bomb threats, chemical releases, and severe weather) require the evacuation of staff, performers, teams, officials, and spectators. This plan provides guidance for the management of staff, students and spectators and will minimize threats to life and property. The plan will apply to sporting events; however, it may also apply to other events held at the stadium.

Should it become necessary to evacuate the stadium for any reason, a message will be played over the press box speaker system. This message will inform spectators to move to the nearest exits.

Staff will be stationed throughout the exit paths to assist with directions.

Please proceed CALMLY, but QUICKLY to the exits – be patient and courteous of those around you.

Follow instructions from game day officials, it may become necessary to re-route away from the closest exit.

During an evacuation, spectators should use all entrance gates as exit gates. An additional gate located next to the women's restroom will be opened. This exit leads to the overflow parking behind the home stadium bleachers. On the visitor's side there will also be an additional gate opened next to the men's restroom. This exits into the main parking lot located behind the gymnasium.

Once outside the stadium, all spectators should continue to MOVE AWAY from the stadium to ensure proper space for EVERYONE to get safely away from the stadium.

Inclement Weather Plan **Smyrna High School Stadium**

Monitoring

Weather will be monitored by a variety of methods, including: The Weather Channel, Weather Bug, NOAA, and District Administration.

Communication

Stadium staff will keep game officials and spectators up-to-date on changing weather conditions. Officials will suspend (or possibly cancel) the game/event if weather conditions warrant. If the game/event is delayed, fans will be notified by the press box speaker system and/or social media. If the game/event is cancelled, a public-address message will be made asking everyone to leave the premises. Teams will report to the locker rooms until they are told to vacate. In the event lightning is nearby, student groups (teams, band, cheerleaders, etc.) may be evacuated to the school gymnasium. First responders and Administration will assist in the evacuation of the stadium. If officials and the Athletic Director agree that it is safe to resume, spectators will be allowed to enter for the remainder of the game without ticket or penalty.

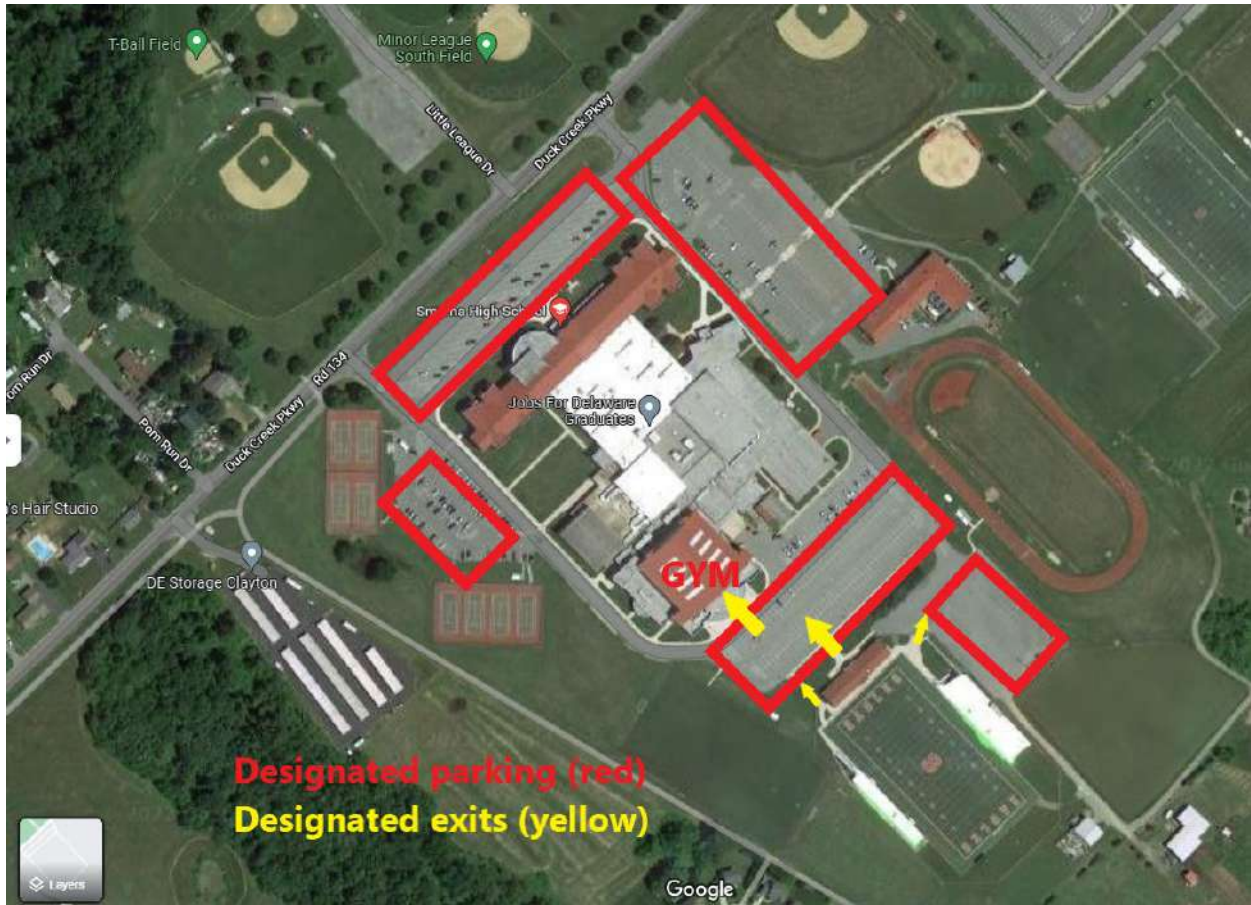
- Spectators will be asked to remain in their vehicles during a fast-moving storm with possible lightning or damaging winds.
- The gymnasium will be opened to shelter spectators if they do not have a vehicle.
- Spectators will be moved from the gymnasium to the cafeteria for a more secure hold in place during the event of a possible RED CELL STORM with tornado warnings

Exit/Gates

Two additional exit gates will be opened during the course of an evacuation.

- On the home side, a side gate will be opened near the women's restroom.
- On the visitor's side, a side gate will be opened near the men's restroom.

Smyrna High School Stadium Aerial View



Smyrna School District Emergency Phone Numbers

Smyrna Police Department	911 Emergency or Non-Emergency (302) 653-9217
Clayton Police Department	911 Emergency or Non-Emergency (302) 653-8186
Ambulance 64	911 Emergency or Non-Emergency (302) 653-6465
Smyrna Fire Department	911 Emergency or Non-Emergency (302) 653-9858
Clayton Fire Department	911 Emergency or Non-Emergency (302) 653-7317
Bay Health ER Center (Smyrna)	(302) 659-2190
Bay Health Hospital (Kent General)	(302) 674-4700
Christiana Care ER Center (Middletown)	(302) 203-1300
Christiana Care Hospital (Newark)	(302) 733-1000