



# SLDS 101: The Operational Essentials

Data Collections Conference  
August 2011

Presented by: Sandy Josephat & Travis Allen



Dr. John D. Barge, State School Superintendent  
"Making Education Work for All Georgians"  
[www.gadoe.org](http://www.gadoe.org)

Sat Mar 22  
04:12:56  
2025

# Role of the SIS Vendor



- To Implement the single Sign-on AKA “Tunnel” logic within their Student Information System (SIS)
- To add a link to SLDS in their System
- To work with the DOE to ensure security specifications are being met
- To work with districts on SIS configuration
- To test validity of the connection



# SLDS Link inside of the SIS



HARRIS SchoolMAX™



Dundee County Schools



Dr. John D. Barge, State School Superintendent  
"Making Education Work for All Georgians"  
[www.gadoe.org](http://www.gadoe.org)

Sat Mar 22  
04:12:56  
2025

# SLDS Vendor Status



- GaDOE is working with ALL Georgia Student Information System (SIS) vendors to implement SLDS



# SIS Vendor Status



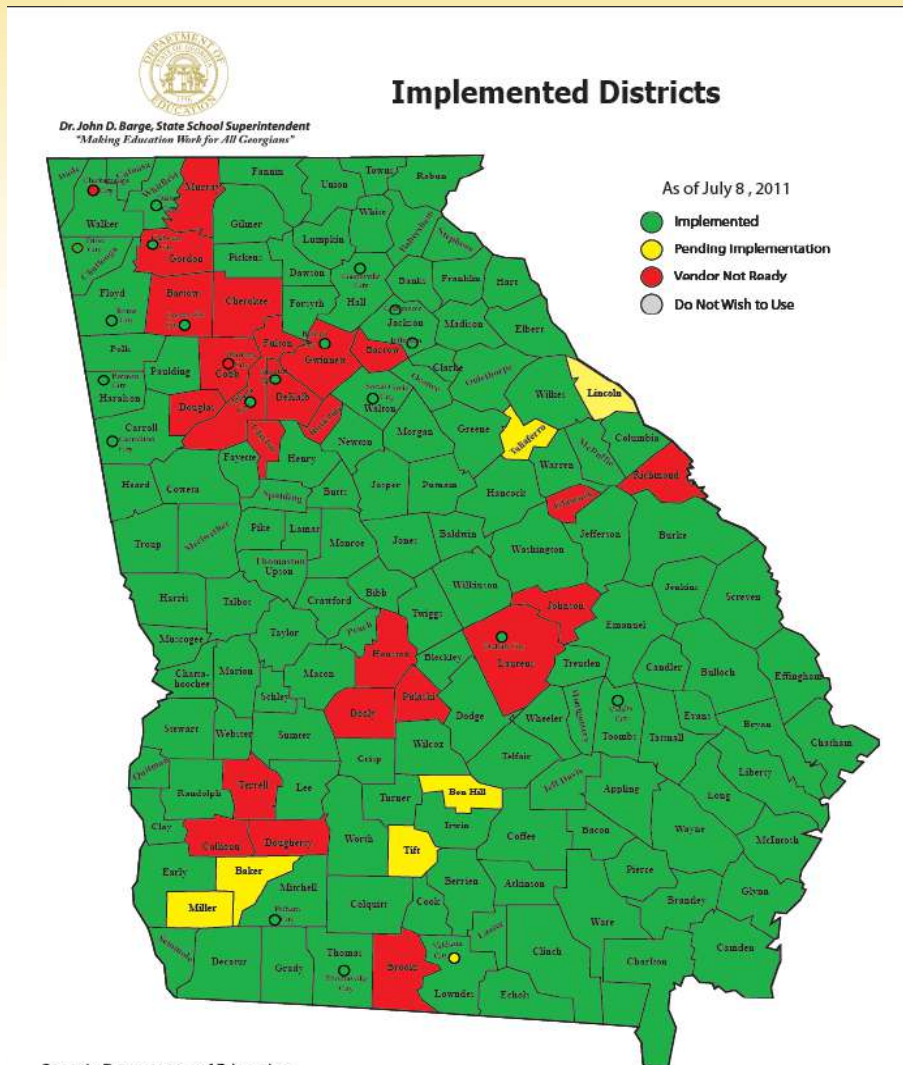
- **SIS Vendors:**

- Infinite Campus
- Pearson
- SchoolMax
- Tyler
- Aspen
- Century Consultants
- Sunguard
- Global Scholar
- AAL
- SASI xp
- HomeGrown





# Implementation Status



# My SIS isn't using SLDS?

## What to do...



- Contact your SIS vendor! They can provide you with:
  - SLDS Implementation Timeframe
  - SLDS Implementation Status
- OR
- Contact SLDS Team for a status on your SIS Vendor:
  - [sjosephat@doe.k12.ga.us](mailto:sjosephat@doe.k12.ga.us)



# SLDS Setup



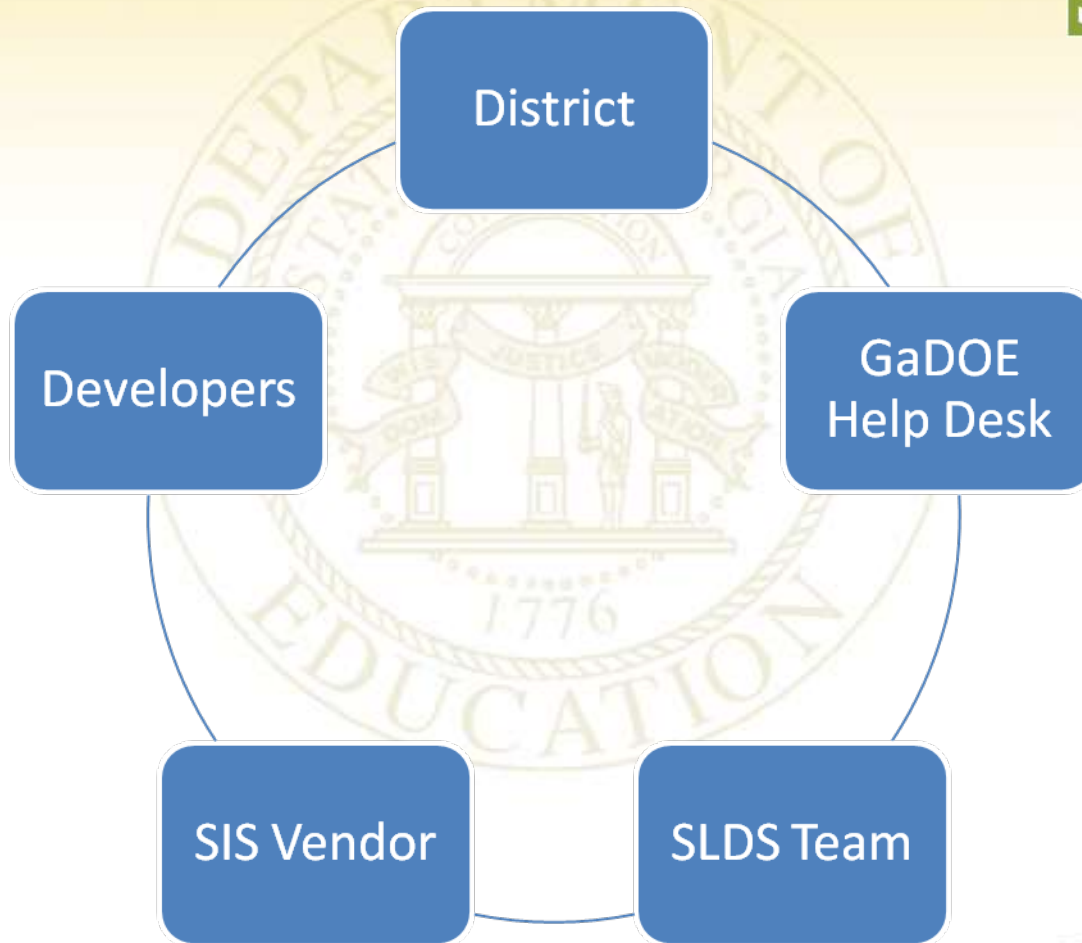
## **USER Access to SLDS is District controlled!**

- Assign your users rights to the SLDS Link – this will enable the link to be shown on the SIS.
- Assign your users the appropriate SLDS Role
- Role Profiles:
  - DISTRICT, SCHOOL ADMIN, TEACHER
- Ensure the user demographic information is populated for your users (Teacher Role):
  - SSN and Gender





# SLDS Troubleshooting



Dr. John D. Barge, State School Superintendent  
"Making Education Work for All Georgians"  
[www.gadoe.org](http://www.gadoe.org)

Sat Mar 22  
04:12:56  
2025

# SLDS Release Plan for GA



# SLDS Release Plan for GA



		<b>Generic ECD</b> (release date +/-)
1.	Requirements Review -- Internal	-10 weeks
2.	Requirements Review – Users ( <i>Illuminate</i> )	-9 weeks
3.	Showtime – Internal ( <i>with Bob</i> )	-8 weeks
4.	Showtime – Users ( <i>Illuminate</i> )	-7 weeks
5.	SW Development ( <i>in iterations</i> )	-4 weeks
6.	Release Notes Development	-4 weeks: draft -1.5 weeks: final
7.	Initial Customer Communication ( <i>Heads-up</i> )	-2 weeks
8.	Training Planning & Development ( <i>includes decision on when to move to Training Environment</i> )	-1.5 weeks
9.	Move to FUN and UAT	-1.5 weeks
10.	QA in FUN including Performance Testing	-2 weeks
11.	UAT Internal & Code “Freeze” including performance testing	-1.5 weeks
12.	UAT Review with Users ( <i>Illuminate</i> )	-1 week
13.	Final Customer Communications ( <i>with Release Notes</i> )	-1 week
14.	Release SW & Verify in PRO & TRN	Release Weekend



# SLDS Release Plan for GA



What	When	Release Type
Spring Release	Mid-April	Major Enhancements for Next School Year
<i>Infrastructure Modifications</i>	<i>Summer</i>	<i>TBD, As Needed</i>
Summer Release	Mid-July	Data Loads Bug Fixes Non-Teacher, non-school functionality
Fall Release	Early November (after FTE1)	Major Enhancements
Winter Release 1	Mid-December	Minor Enhancements & Bug Fixes Data Loads (EOCT)
<i>Infrastructure Modifications</i>	<i>Christmas Break</i>	<i>TBD, As Needed</i>
Winter Release 2	Late March (after FTE3)	Minor Enhancements & Bug Fixes



Dr. John D. Barge, State School Superintendent  
 "Making Education Work for All Georgians"  
[www.gadoe.org](http://www.gadoe.org)



# Current Release / Future



- **SLDS Enhancements**

- New Applications will be added to the Tunnel application bar...such as Profile Manager, ODS Error Reports, Usage Dash
- New role is the SIS system to manage SLDS tunnel
- Administration of the SIS roles access to State Applications such as GTID, Teacher Resource Link, IEP, GAVS (Role based Application Access, controlled by the Application tool bar)



# Current Release / Future



- Administration of the SIS roles access to Components in the Applications such as Assessments, Health, Discipline, Student level drill (Role based Security, controlled by the menu bar)
- Administration and management of digital certificate exchange for the tunnel
- Administration and management of Public and Private key exchange for the Operational Data Store FTP Voyager client installation
- Scheduling of daily processing of the file layouts such as SCP, SR-Student, SR-Enrollment for each district



# Current Release / Future



- Action Items

- Beta release to pilot districts
- Role based security readiness document to the SIS vendor to take advantage of the profile manager
- Working with SIS vendors to implement role based security
- District signup process for Profile Manager
- Profile Manager implementation and district onboarding



# Usage Statistics



- Provides usage dashboards to district level and school level users
- Provides the longitudinal history of the users accessing the system
- Provides the access of the system by user type (teacher, school admin, district)
- Provides the comparative summary analysis such as top schools, users and admins using the system





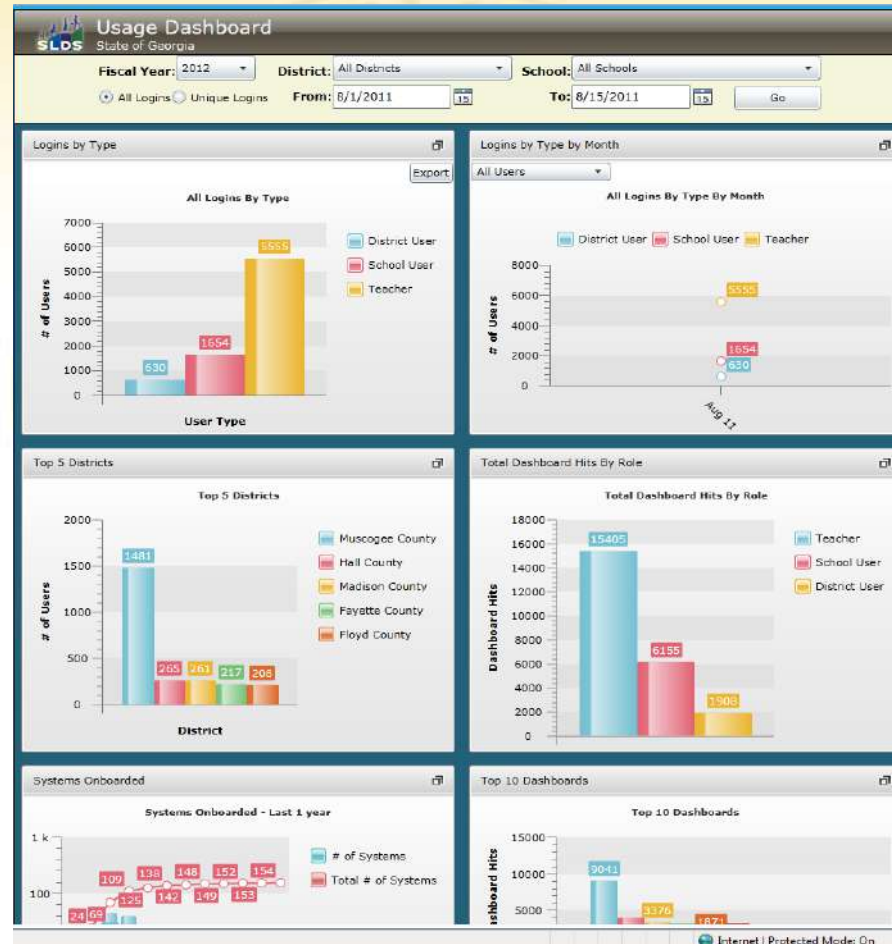
# Usage Statistics



- Action Items for Usage
  - Piloting with three districts
  - District signup process for SLDS Usage
  - SLDS Monitoring implementation and district onboarding

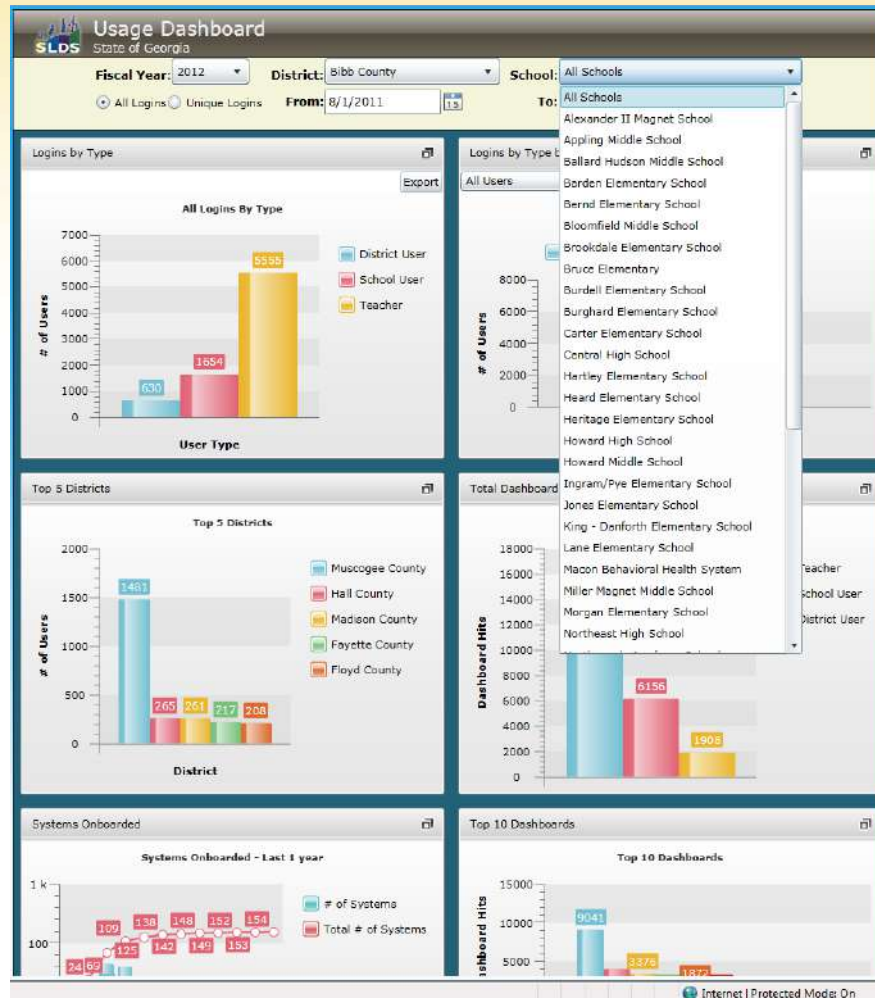


# Usage Dashboard



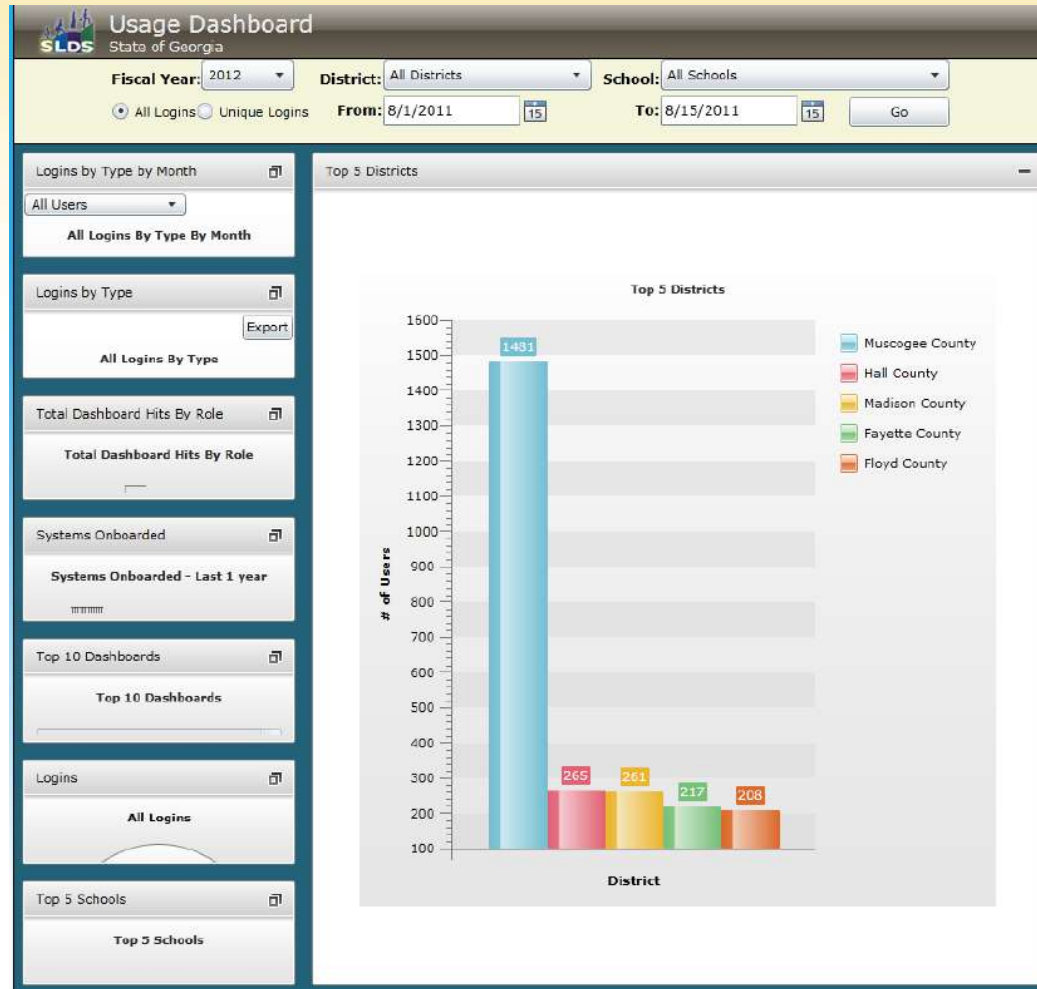
Dr. John D. Barge, State School Superintendent  
"Making Education Work for All Georgians"  
[www.gadoe.org](http://www.gadoe.org)

# Usage Dashboard



Dr. John D. Barge, State School Superintendent  
"Making Education Work for All Georgians"  
[www.gadoe.org](http://www.gadoe.org)

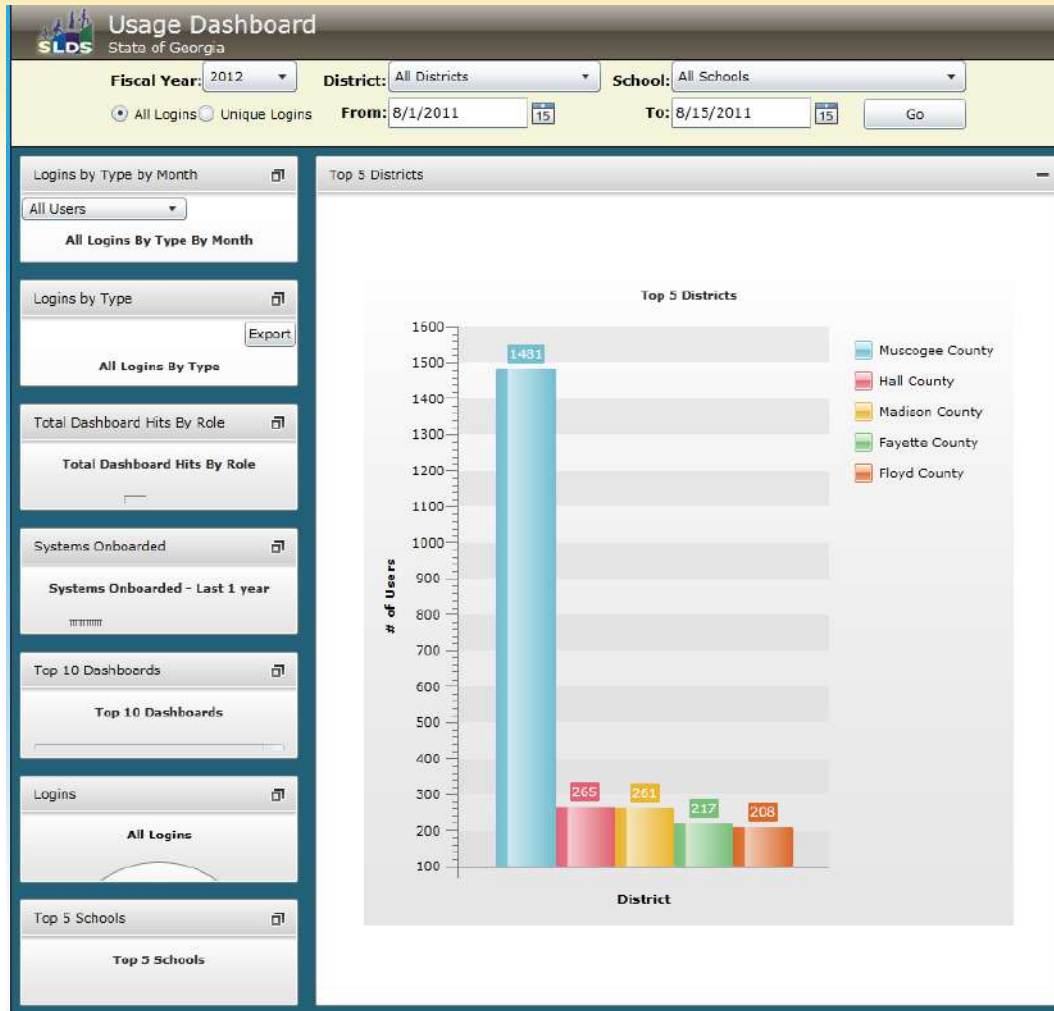
# Top 5 Districts



Dr. John D. Barge, State School Superintendent  
"Making Education Work for All Georgians"  
[www.gadoe.org](http://www.gadoe.org)

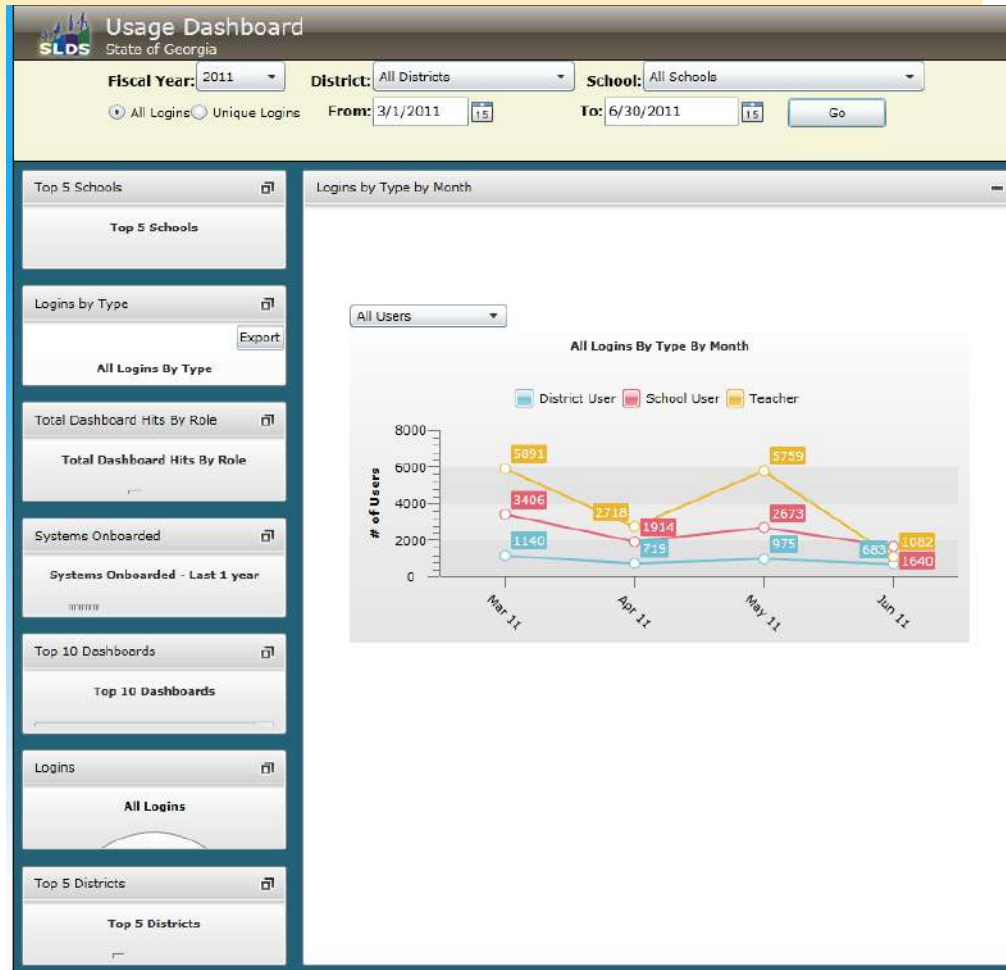


# Top 5 Schools (Muscogee Co.)



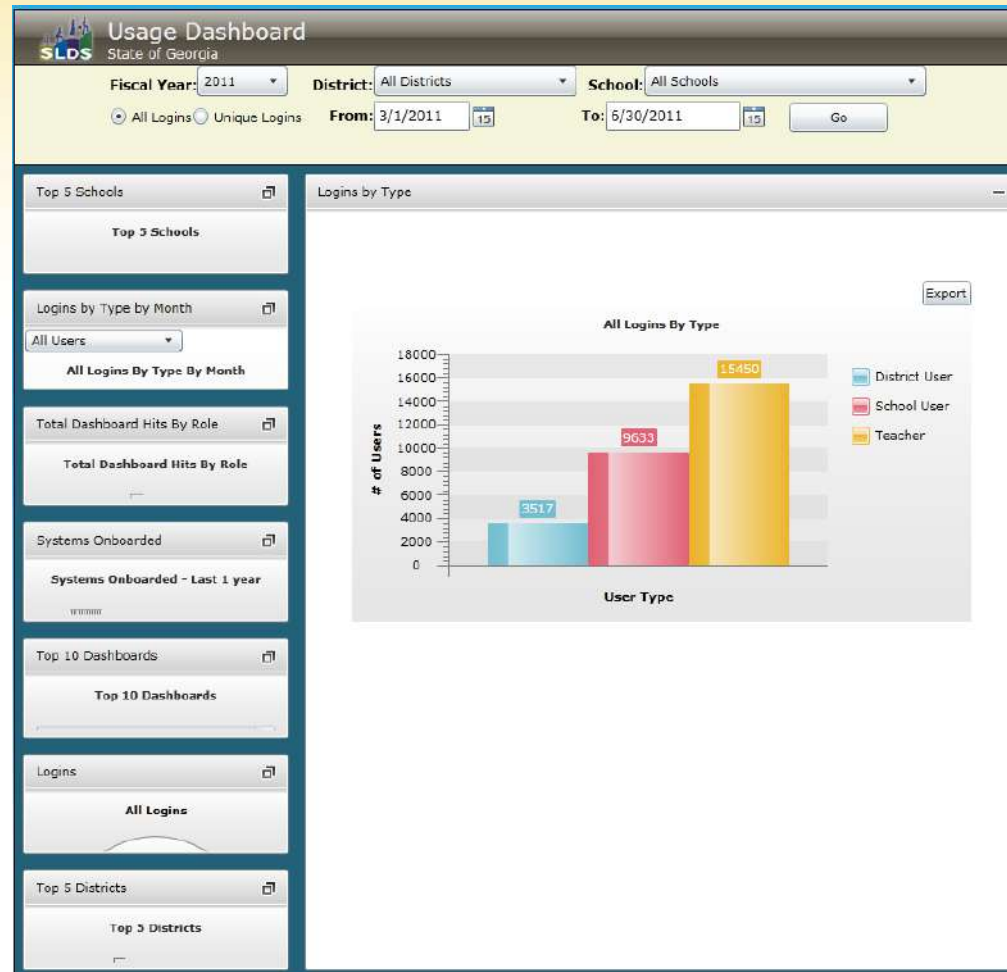
Dr. John D. Barge, State School Superintendent  
"Making Education Work for All Georgians"  
[www.gadoe.org](http://www.gadoe.org)

# All Logins by Type by Month



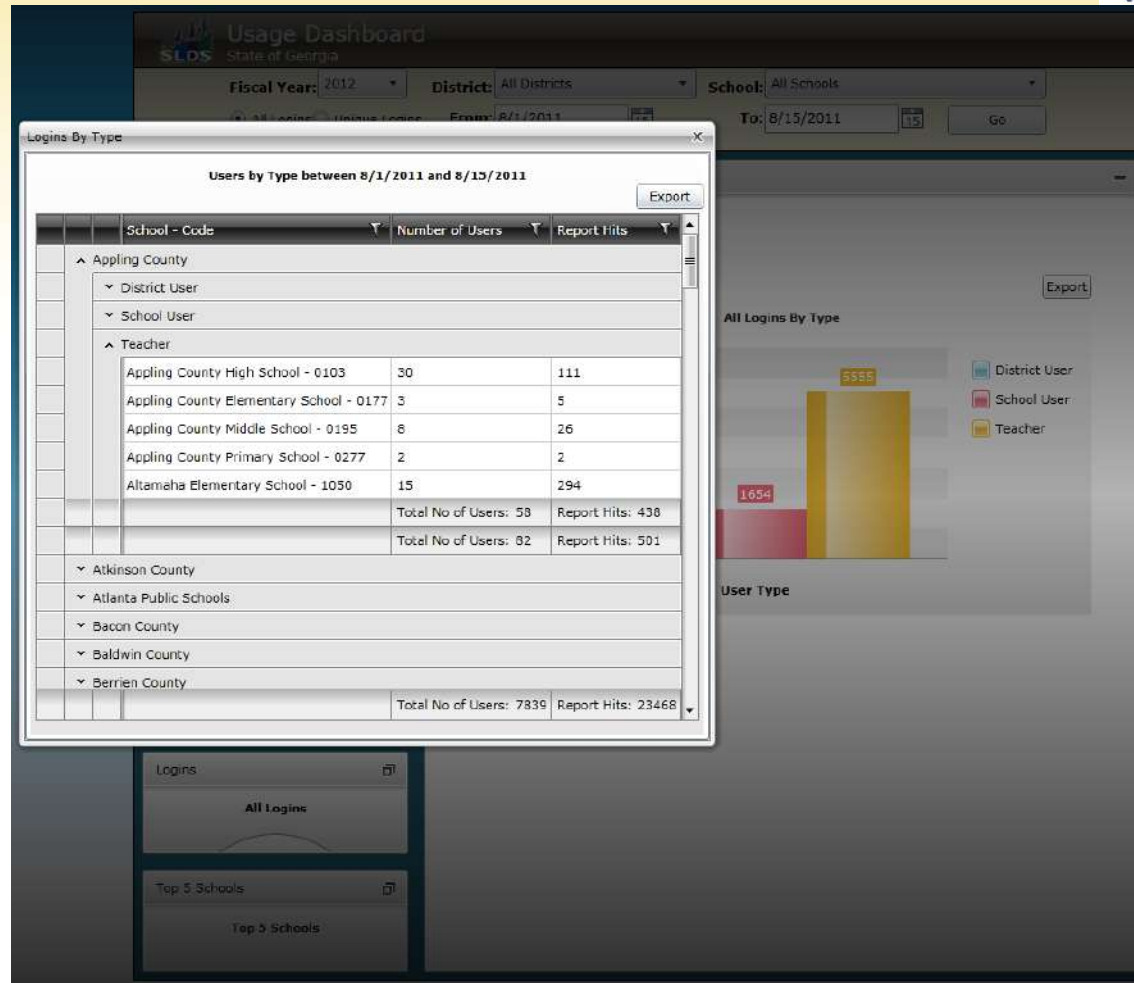
Dr. John D. Barge, State School Superintendent  
"Making Education Work for All Georgians"  
[www.gadoe.org](http://www.gadoe.org)

# Logins by Type



Dr. John D. Barge, State School Superintendent  
"Making Education Work for All Georgians"  
[www.gadoe.org](http://www.gadoe.org)

# Logins By Type (Drill Down)



Dr. John D. Barge, State School Superintendent  
"Making Education Work for All Georgians"  
[www.gadoe.org](http://www.gadoe.org)



# Usage Dashboard – Export via Excel



Logins By Type - Microsoft Excel

	A	B	C	D	E	F	G	H	I	J	K	L	M	N	O	P
	District	School	Role	NoOfUsers	ReportHits											
2	Appling County	Appling County High School - 0103	School User	14	39											
3	Appling County	Appling County High School - 0103	Teacher	30	111											
4	Appling County	Appling County Elementary School - 0177	District User	2	6											
5	Appling County	Appling County Elementary School - 0177	Teacher	3	5											
6	Appling County	Appling County Middle School - 0195	Teacher	8	26											
7	Appling County	Appling County Primary School - 0277	Teacher	2	2											
8	Appling County	Altamaha Elementary School - 1050	District User	1	2											
9	Appling County	Altamaha Elementary School - 1050	School User	6	15											
10	Appling County	Altamaha Elementary School - 1050	Teacher	15	294											
11	Appling County	ADMIN USER	District User	1	1											
12	Atkinson County	Atkinson County High School - 0103	School User	6	32											



# Training



- SLDS Training Available:
  - Face to Face End User Training sessions
    - Contact us to get on the training schedule
  - Train the Trainer Sessions
  - Video's and Training Materials on SLDS Website
    - <http://slds.doe.k12.ga.us>
  - Self Administered on-line Training
    - **Coming Soon through GAVS!!**
  - SLDS Training Site
    - <http://sldstrn.gadoe.org/sldsdemoweb/>





# Q&A

## “Any Questions?”



Dr. John D. Barge, State School Superintendent  
“Making Education Work for All Georgians”  
[www.gadoe.org](http://www.gadoe.org)

Sat Mar 22  
04:12:56  
2025

# Contact Information



- **SLDS Website & Email**
  - <http://slds.doe.k12.ga.us>
  - [slds@doe.k12.ga.us](mailto:slds@doe.k12.ga.us)
- **Travis Allen**
  - [tallen@doe.k12.ga.us](mailto:tallen@doe.k12.ga.us)
- **Sandy Josephat**
  - [sjosephat@doe.k12.ga.us](mailto:sjosephat@doe.k12.ga.us)

