

Grading and Reporting



Second Grade

Purpose of Grading and Reporting

Our primary purposes of grading and reporting include:

- Report student progress toward mastery of grade level standards for students and parents
- - Guide instruction of student learning by the teacher
- - The learning expectations and standards for performance have been outlined for each quarter based on the Georgia Standards of Excellence in ELA and Math, and Georgia Performance Standards for all other subjects.



Assessment Types

Formative

Daily, ongoing assessments/observations that are used to monitor student progress toward mastery of standards. These assessments typically assess mastery of individual standards.

Summative

An assessment that is used at the end of a unit of study. These assessments generally assess student mastery of several standards.



Scoring



- A score of 3 indicates the student has met expectations for that standard.
- Student scores will be reported to parents using the weekly student work folders sent home by classroom teachers.
- Students who consistently demonstrate mastery of standards through regular classroom instruction and assessment will receive a score of "3" (meets standard). Students who consistently demonstrate mastery and independently demonstrate the ability to exceed the end-of-year standard may receive a score of 4 in a given area.

4 - Performance exceeds standard and student consistently produces outstanding work independently.

3 - Performance meets standard and student produces quality work with little to no teacher support (expectation)

2 - Performance is approaching standard and student applies learned skills with some teacher support.

1 - Performance is below standard and student needs frequent teacher support, re-teaching, and additional practice.

Work Habits

- Student work habits will be reported using the following categories: Responsibility, Participation, Assignment Completion, and Interpersonal Skills
- In each of the above categories, students will receive one of the following scores: Needs Improvement (N), Successful (S), or Exemplary (E).
(Successful (S) is the expectation of students)

Conduct Card



Report Card

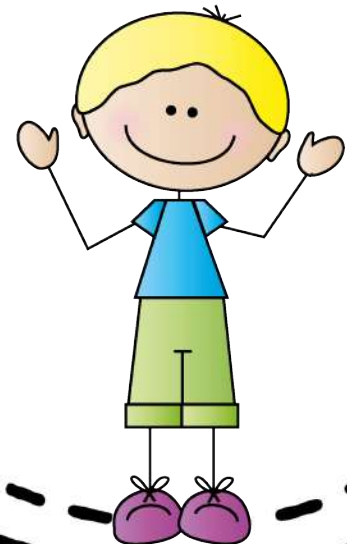
Report Cards include the following information:

- **Subject areas and domains:** Scores of 1-4 in English/Language Arts, Math, Science, and Social Studies
- **Music, PE, Art and Health:** Scores of S (Satisfactory), N (Needs Improvement), or E (Exemplary)
- **Work Habits:** Scores of S (Satisfactory), N (Needs Improvement), or E (Exemplary)
- **Attendance:** Tardies and Absences



Additional Information

- Handwriting (letter formation, spacing, and using lines)
- Math Facts / Math Number Sense
- School Wide Birthday Policy
- [itsLearning](#) Info
- Student Led Conferences
- [Second Grade Academic Page](#)
- Our classroom



Thank you for coming! We look forward to a fabulous year!

